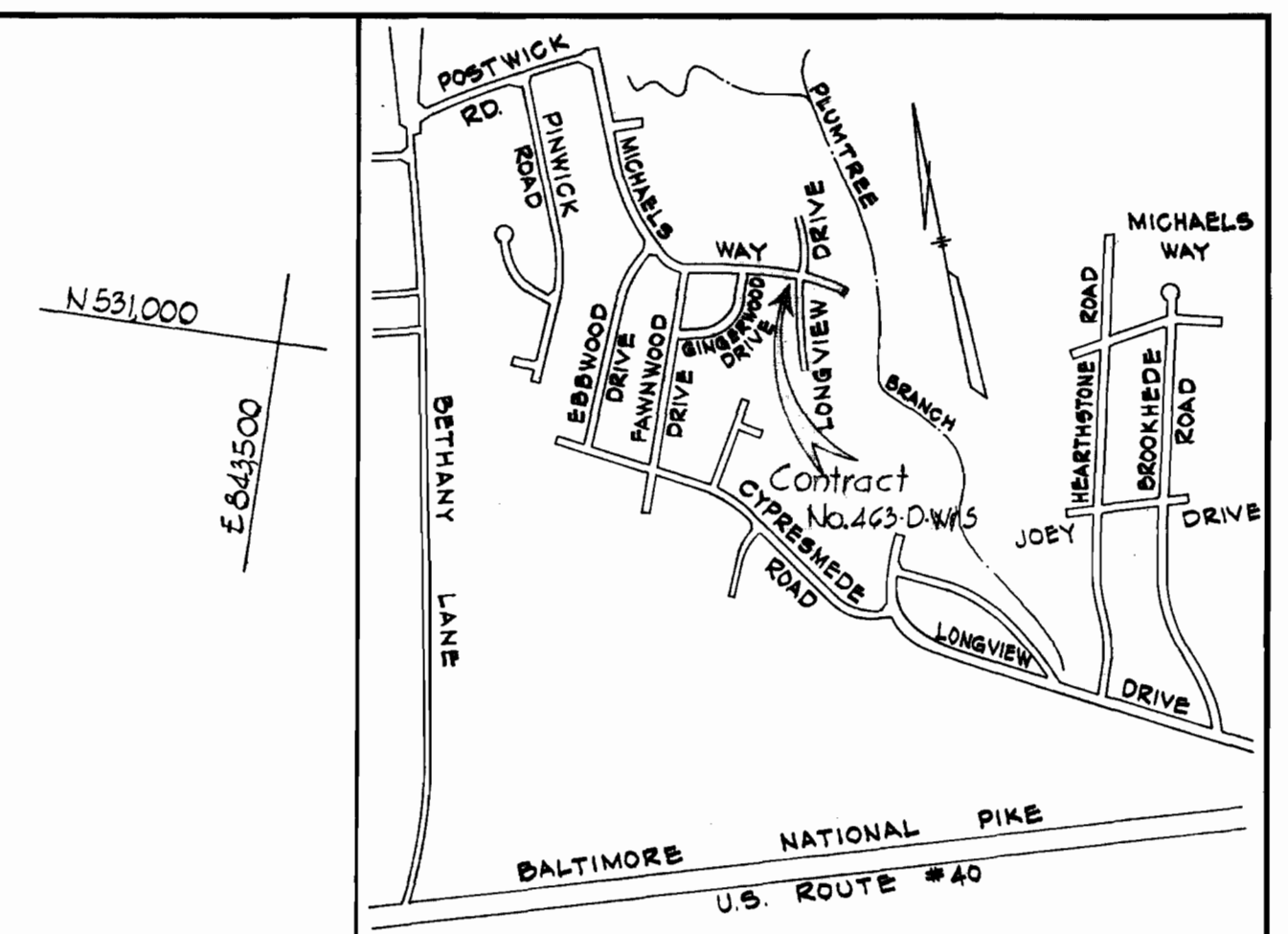


Suspension

Suspension

Suspension



GENERAL NOTES

1. Approximate location of existing mains are shown. The Contractor shall take all necessary precautions to protect existing mains and services and maintain uninterrupted supply. Any damage incurred shall be repaired immediately.
2. All pipe elevations shown are invert elevations.
3. The Contractor shall locate existing utilities a minimum of two weeks in advance of construction operations in vicinity of utilities.
4. For all Standard Details see standards bound in Specifications.
5. All water mains to have a minimum of 3 1/2' cover unless otherwise noted.
6. Block all fittings with concrete, see standards bound in Specifications.
7. Bury Line elevations on Fire Hydrants shall be set to the elevations shown on the drawing.
8. All Fire Hydrants shall be strapped to the tee and shall be buttressed with concrete in accordance with Standard Details.
9. Clear all utilities by a minimum of 6"; Clear all poles by a 2'-0" min. or tunnel as required.
10. The Contractor shall provide a joint in all sewer mains within 2'-0" of exterior manhole walls.
11. All manholes shall be 4'-0" inside diameter.
12. All horizontal and vertical control are based on Maryland State Datum.
13. Cost of strapping fire hydrants and valves to be included in the unit price bid for furnishing and installing fire hydrants.
14. Elevations shown in Plan are minimum Easement Elevations.

QUANTITIES

8" Sewer	850'
8" Water	1820'
6" Water	230'
Fire Hydrants	3

PURDUM & JESCHKE
ENGINEERS
1023 N. CALVERT ST.
BALTIMORE, MARYLAND

DEPARTMENT OF PUBLIC WORKS
HOWARD COUNTY, MARYLAND
DATE 11-12-71
W.O. Elbert
CHIEF - BUREAU OF WATER AND SEWER

CONTRACT NO. 463-D - W & S

PLAN OF
WATER AND SEWER MAINS

BETHWOOD - SECTION 5
SECOND ELECTION DISTRICT

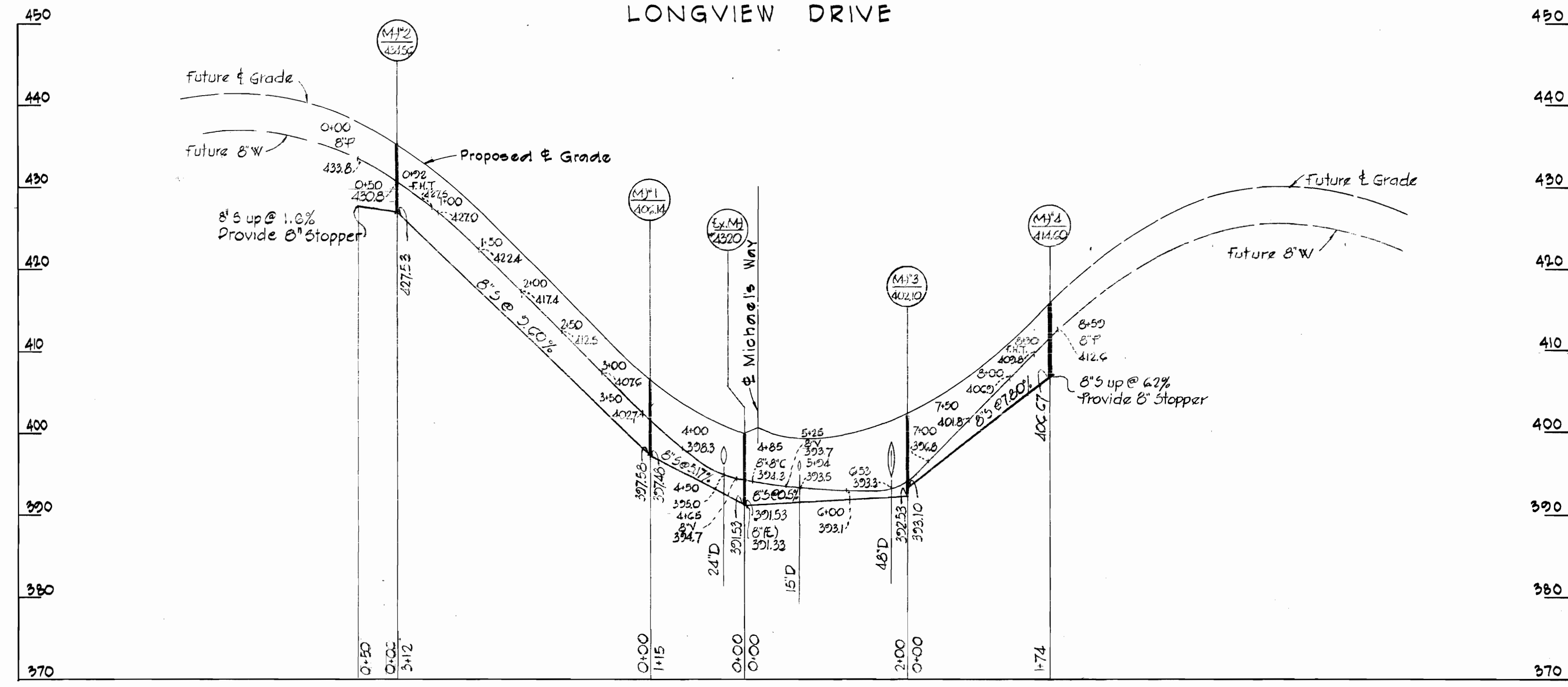
DRAWING NO. 1 OF 2 SCALE 1" = 50'

Approved Time 25 1973

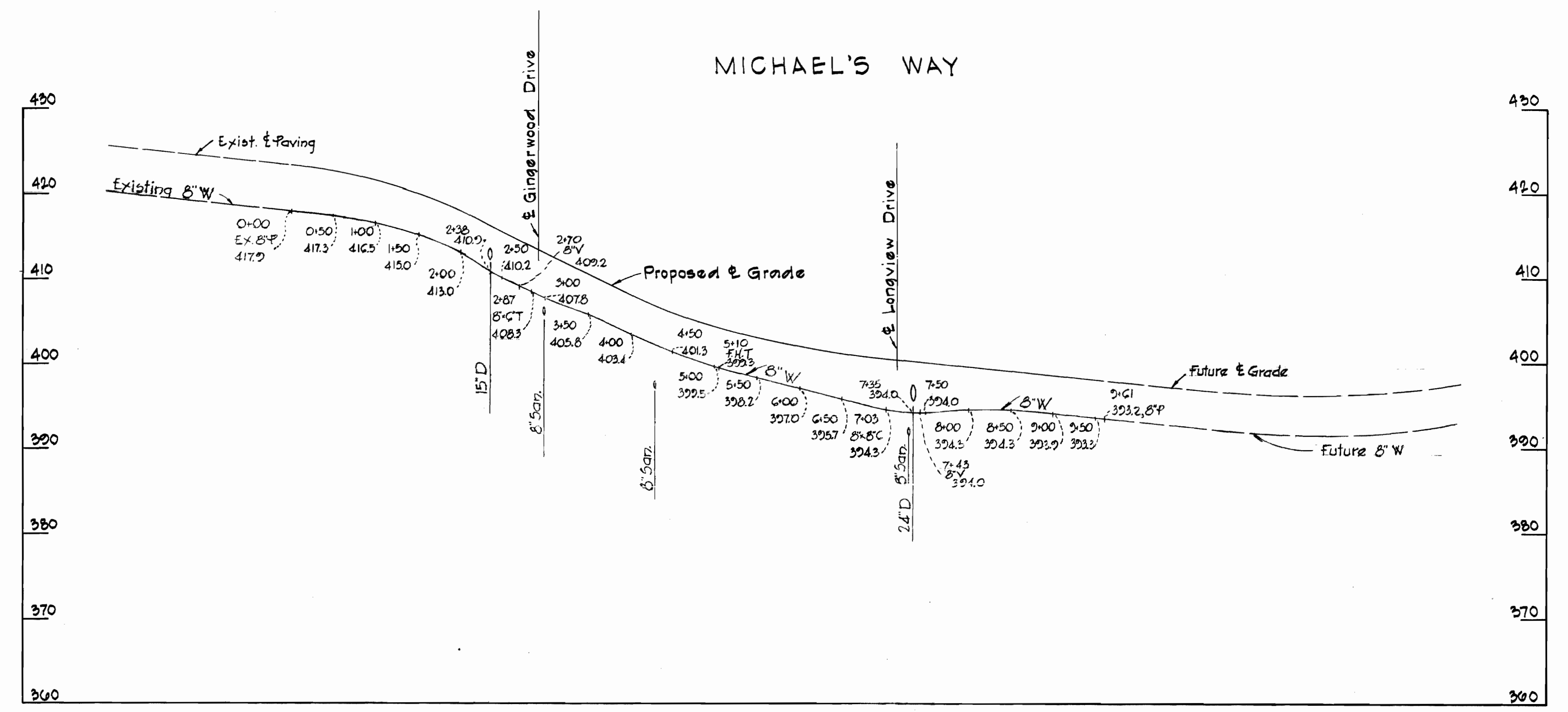
WS 463 - WS/1

W.O. 135.14

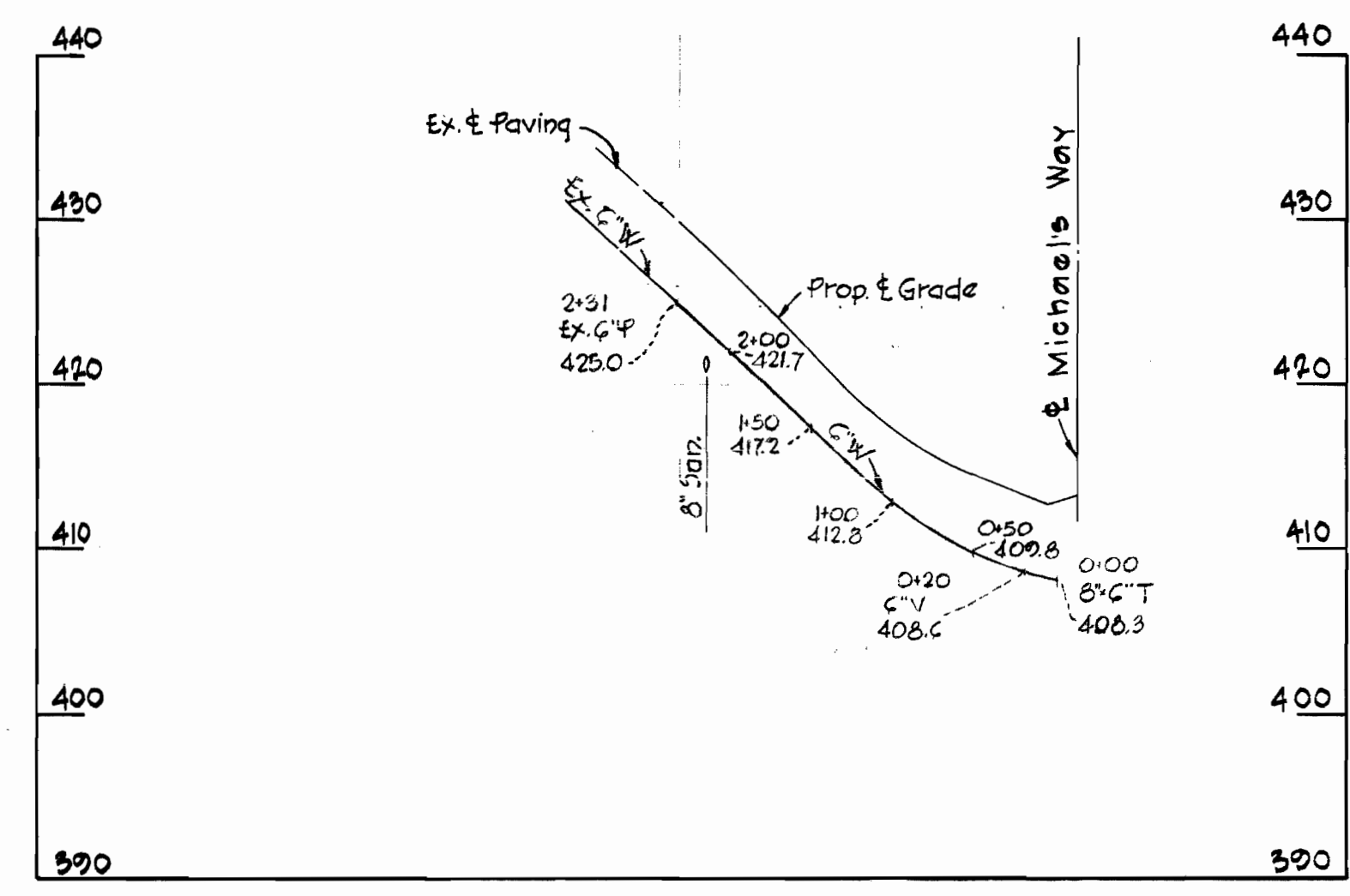
LONGVIEW DRIVE



MICHAEL'S WAY



GINGERWOOD DRIVE



PURDUM & JESCHKE
ENGINEERS
1023 NORTH CALVERT STREET
BALTIMORE, MARYLAND

DEPARTMENT OF PUBLIC WORKS
COUNTY, MARYLAND
16-12-71
DATE
L. O. Falbert
CHIEF - BUREAU OF WATER AND SEWER

CONTRACT NO. 463-D - W & S

PROFILE OF
WATER AND SEWER MAINS

BETHWOOD - SECTION 5
SECOND ELECTION DISTRICT

DRAWING NO. 2 OF 2
SCALE VER. 1"=10' HOR. 1"=100'

WS 463 W.S.1

8.15.1973

8.15.1973

8.15.1973