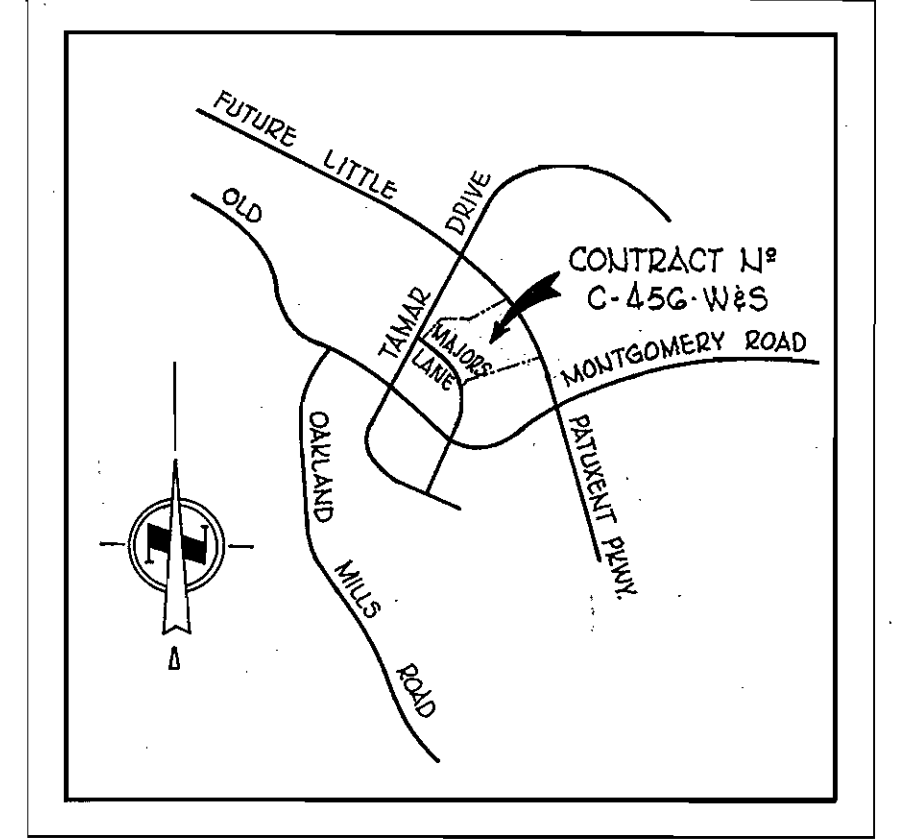


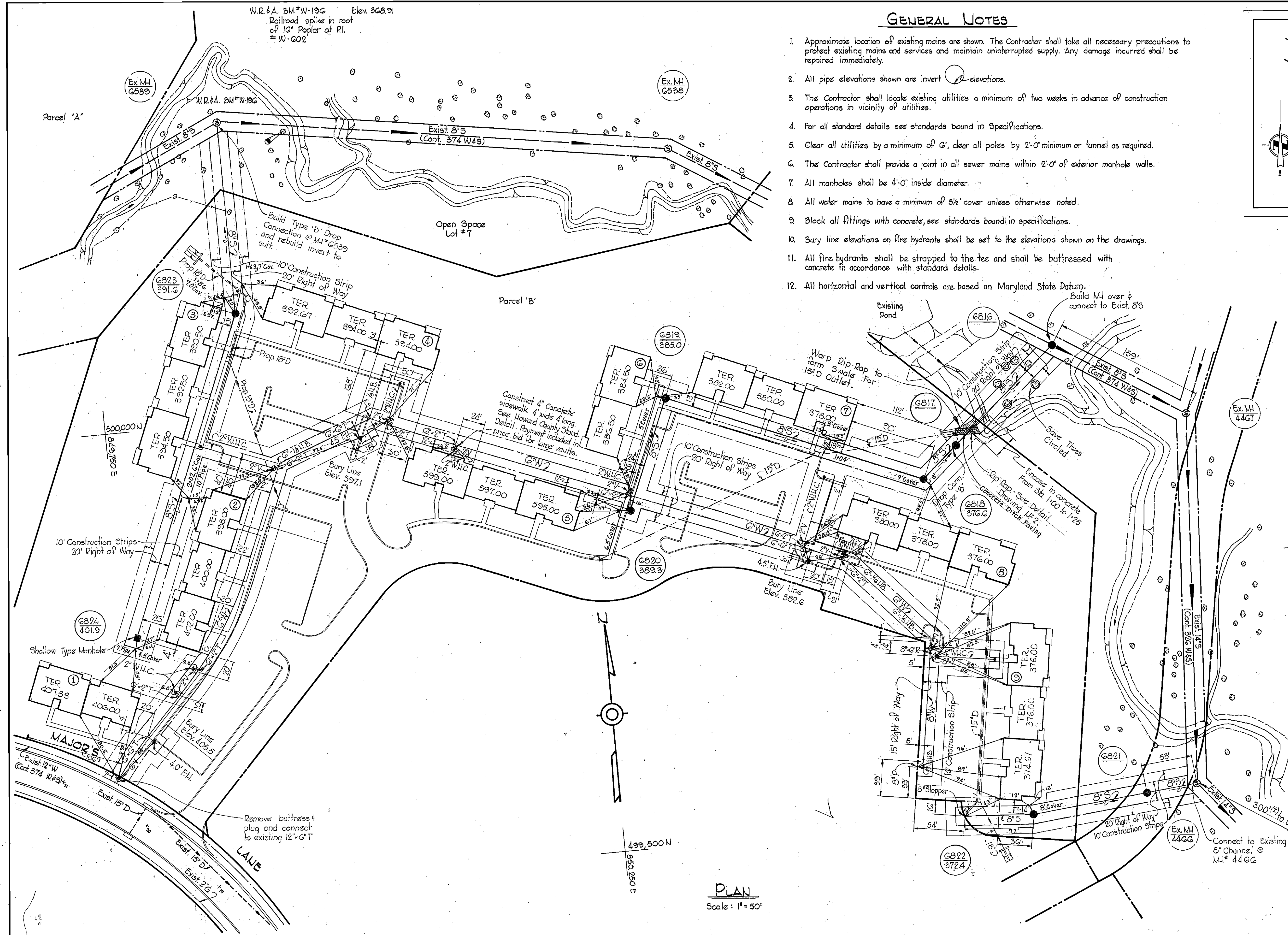
GENERAL NOTES

1. Approximate location of existing mains are shown. The Contractor shall take all necessary precautions to protect existing mains and services and maintain uninterrupted supply. Any damage incurred shall be repaired immediately.
2. All pipe elevations shown are invert elevations.
3. The Contractor shall locate existing utilities a minimum of two weeks in advance of construction operations in vicinity of utilities.
4. For all standard details see standards bound in Specifications.
5. Clear all utilities by a minimum of 6', clear all poles by 2'-0" minimum or tunnel as required.
6. The Contractor shall provide a joint in all sewer mains within 2'-0" of exterior manhole walls.
7. All manholes shall be 4'-0" inside diameter.
8. All water mains to have a minimum of 3 1/2' cover unless otherwise noted.
9. Block all fittings with concrete, see standards bound in specifications.
10. Bury line elevations on fire hydrants shall be set to the elevations shown on the drawings.
11. All fire hydrants shall be strapped to the tee and shall be buttressed with concrete in accordance with standard details.
12. All horizontal and vertical controls are based on Maryland State Datum.



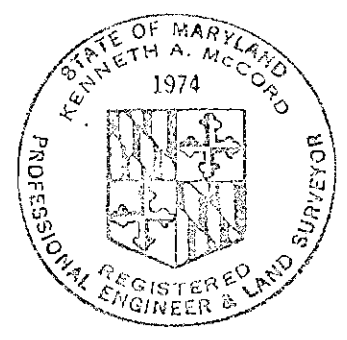
VICINITY MAP
Scale: 1" = 2000'

QUANTITIES	
8" Sewer	1420'
8" Water	50'
6" Water	1,185'
Fire Hydrants	3



AS BUILT:
STAKEOUT: FB # 5158
DIARY: FB # 5158
FH - M&H TYPE

W.R. & A. B.M. # W-95 Elev. 856.84
Railroad spike in base of 18" Twin Poplar near P.I. # W-361



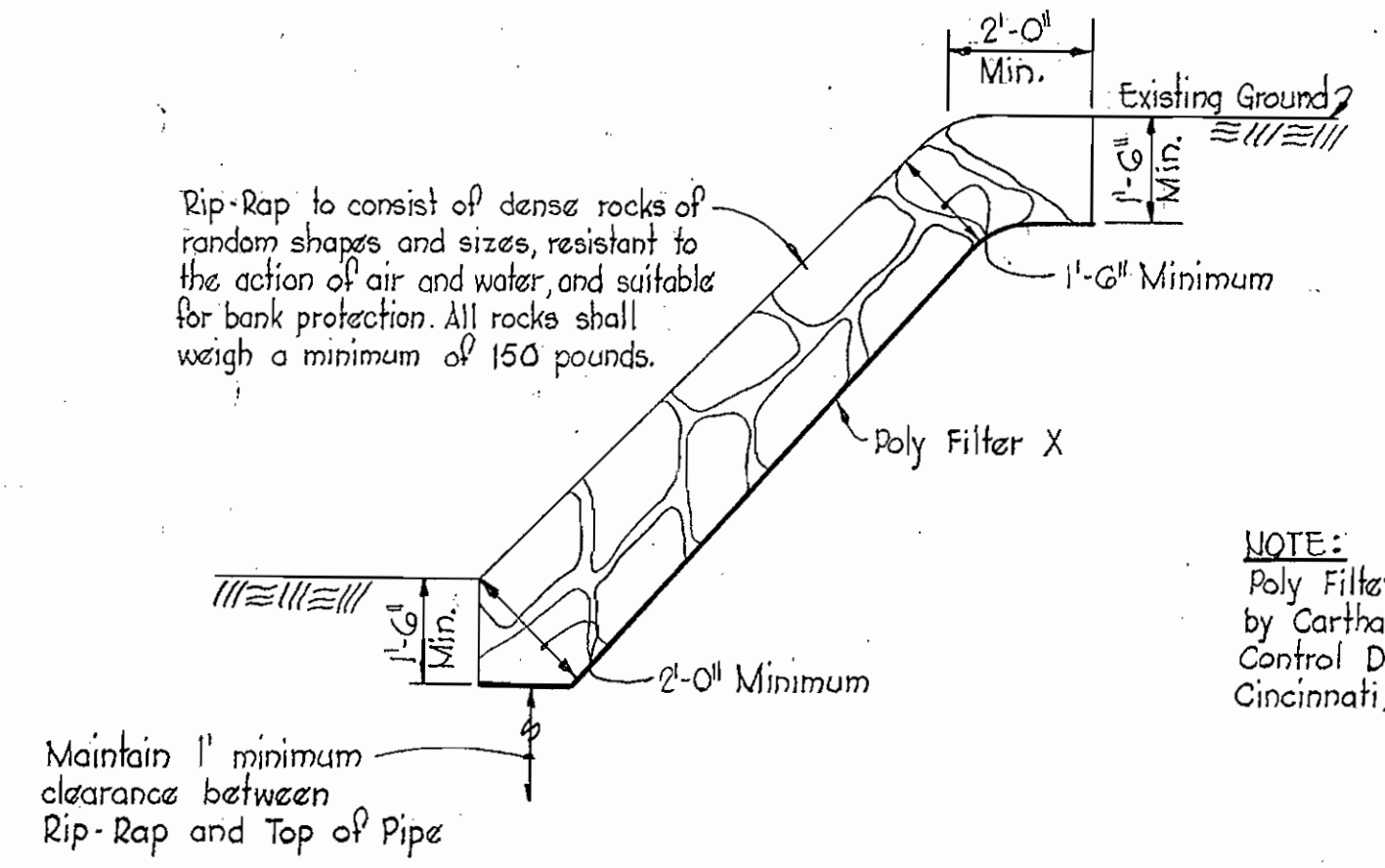
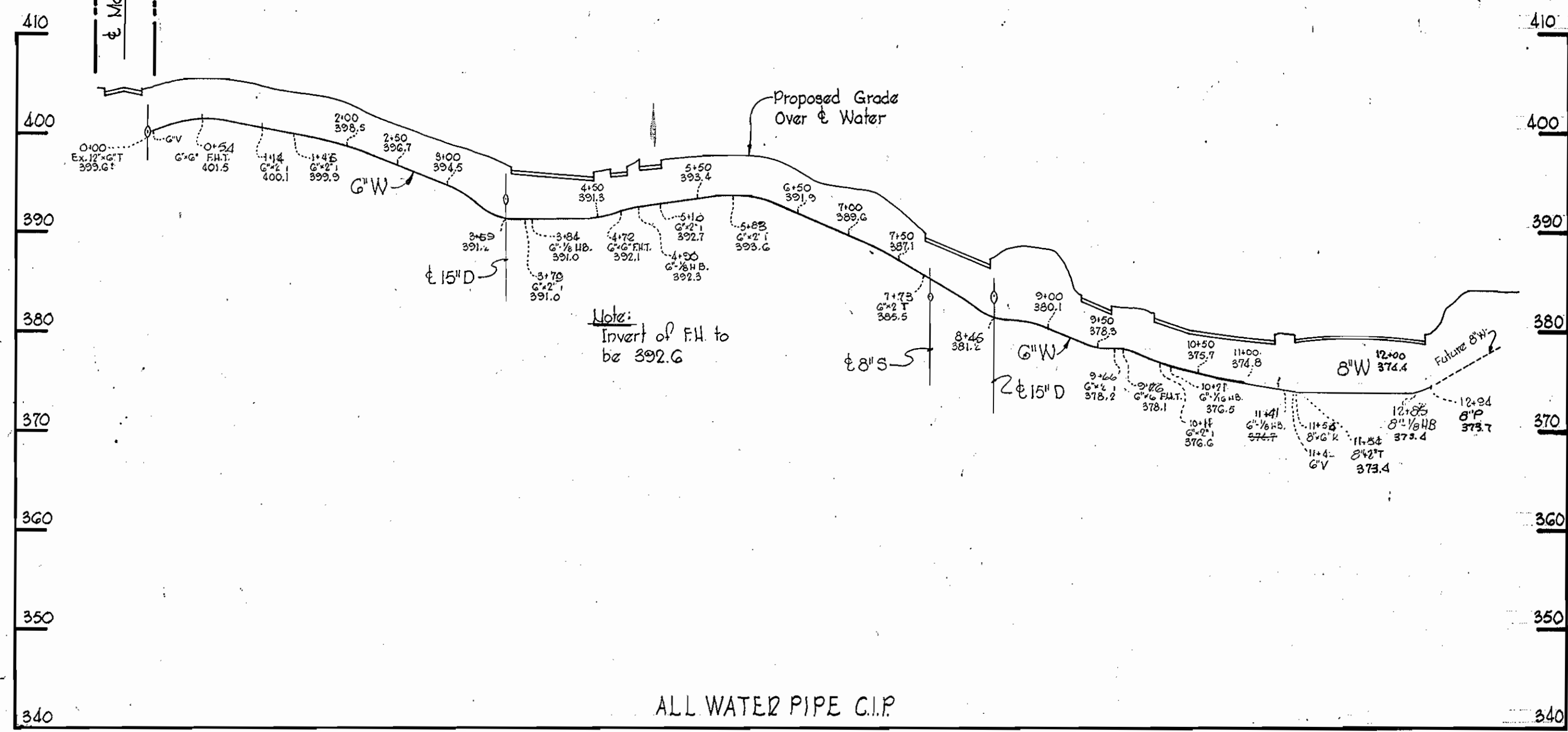
Whitman, Requardt & Associates

Village of Longreach
Jeffers Hill
Parcel 'B', Lot #1
Section 1, Area 2
Contract No. C-456 W&S

DRAWING NO. 1 OF 2	SCALE AS SHOWN
499-486	499-487
	500-486

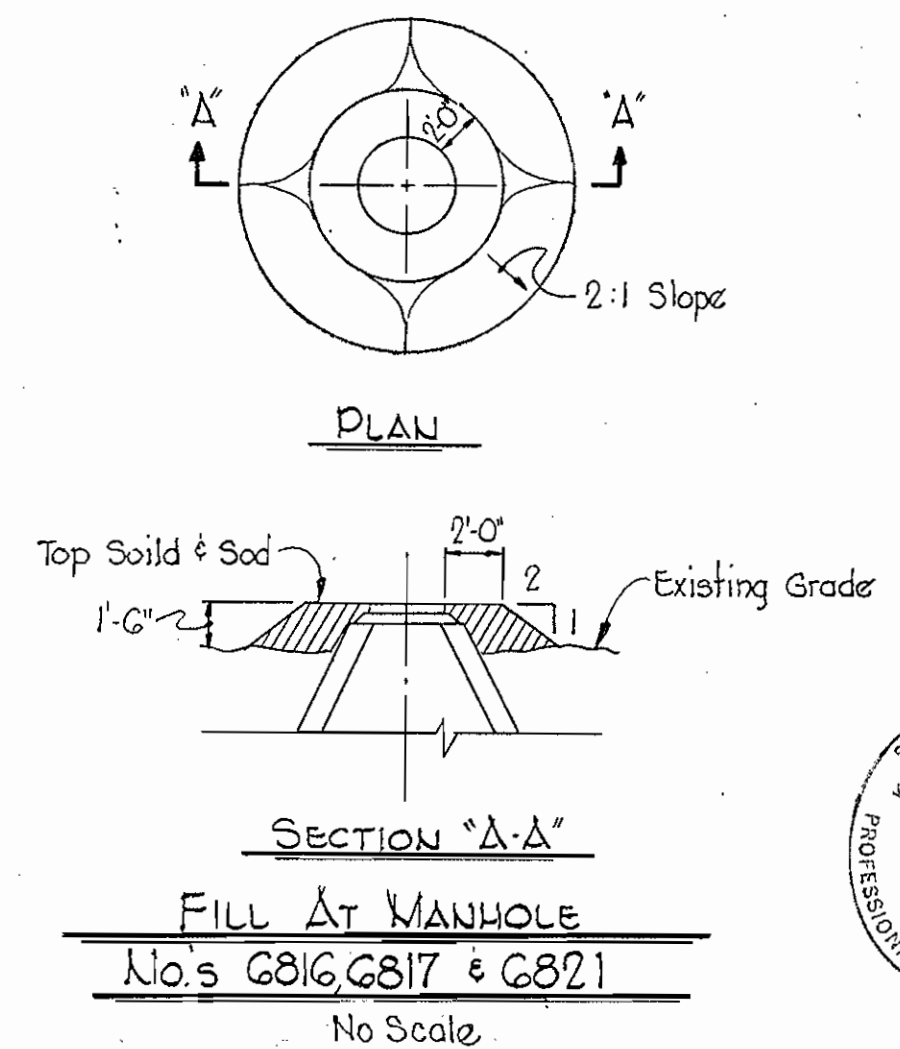
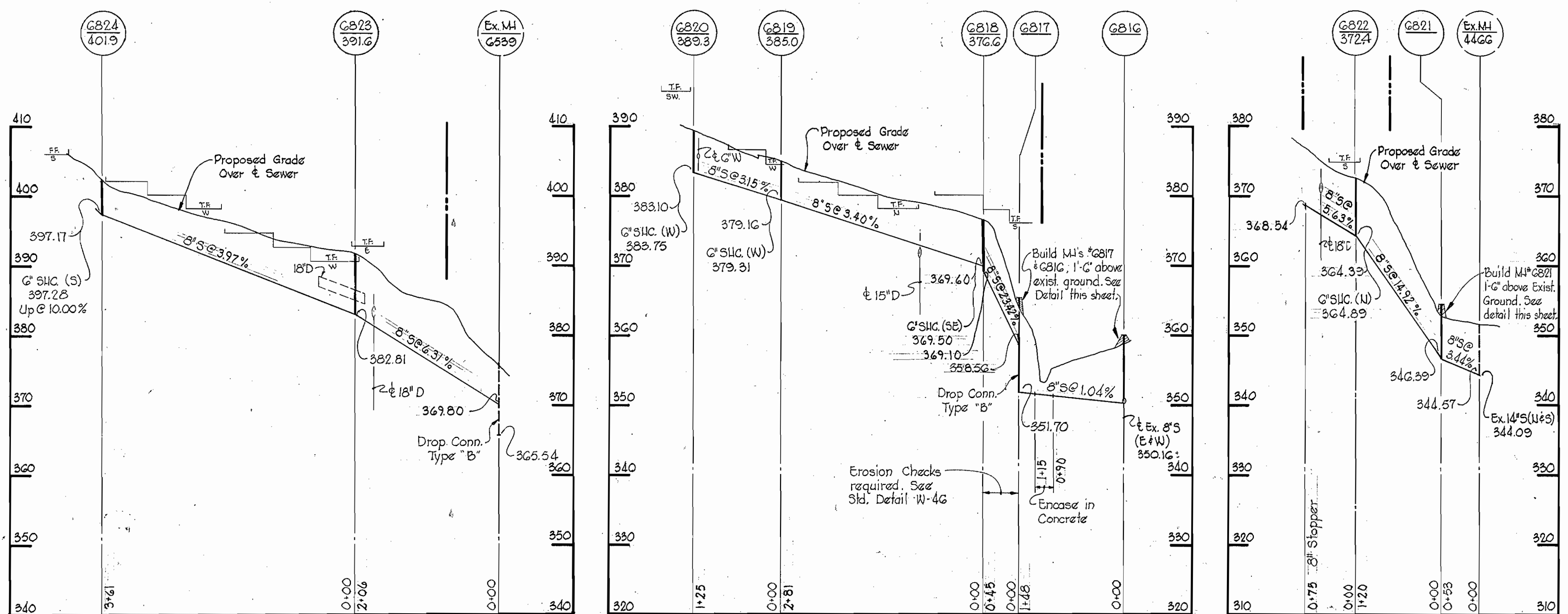
WHITMAN, REQUARDT & ASSOCIATES ENGINEERS 1304 ST. PAUL ST. BALTIMORE, MARYLAND	DEPARTMENT OF PUBLIC WORKS HOWARD COUNTY, MARYLAND 10-29-71 DATE	CONTRACT NO. C-456 W&S CHIEF - BUREAU OF WATER AND SEWER	PLAN OF WATER & SEWER MAINS
COLUMBIA VILLAGE OF LONGREACH ELECTION DISTRICT GUILFORD NO. 6		DRAWING NO. 1 OF 2 SCALE AS SHOWN	

WS 456-W&S/1



RIP-RAP DETAIL
Scale: 3/4" = 1'-0"

NOTE:
Poly Filter X shall as manufactured by Carthage Mills Inc. Erosion Control Division, 124 W 66th Street, Cincinnati, Ohio, or approved equal.



Harold A. McLeod

Village of Longreach
Jeffers Hill
Parcel "B", Lot #1
Section 1, Area 2
Contract No. C-456 W&S

WHITMAN, REQUARDT & ASSOCIATES ENGINEERS 1304 ST. PAUL ST. BALTIMORE, MARYLAND	DEPARTMENT OF PUBLIC WORKS HOWARD COUNTY, MARYLAND 10-29-71 DATE <i>W. O. G. 2023</i> CHIEF - BUREAU OF WATER AND SEWER	CONTRACT NO. C-456 W&S	PROFILE OF WATER & SEWER MAINS	COLUMBIA VILLAGE OF LONGREACH ELECTION DISTRICT GUILFORD, NO. 6	DRAWING NO. 2 OF 2 SCALE AS SHOWN
--	---	-----------------------------------	---	--	---

W. O. G023-2

11-30-72

WS 456-W&S/2