

W.R.A. B.M. 'J' Elev. 209.916
RR spike in Power Pole C/P #13
32' Right of Sta. 5+25 Between
P.I. #K-15 & P.I. #K-16.

W.R.A. B.M. 'K' Elev. 237.597
RR spike in Base of Power
Pole GE #269665 33' Right
of Sta. 2+63 Between P.I. #K-16 &
P.I. #K-17.

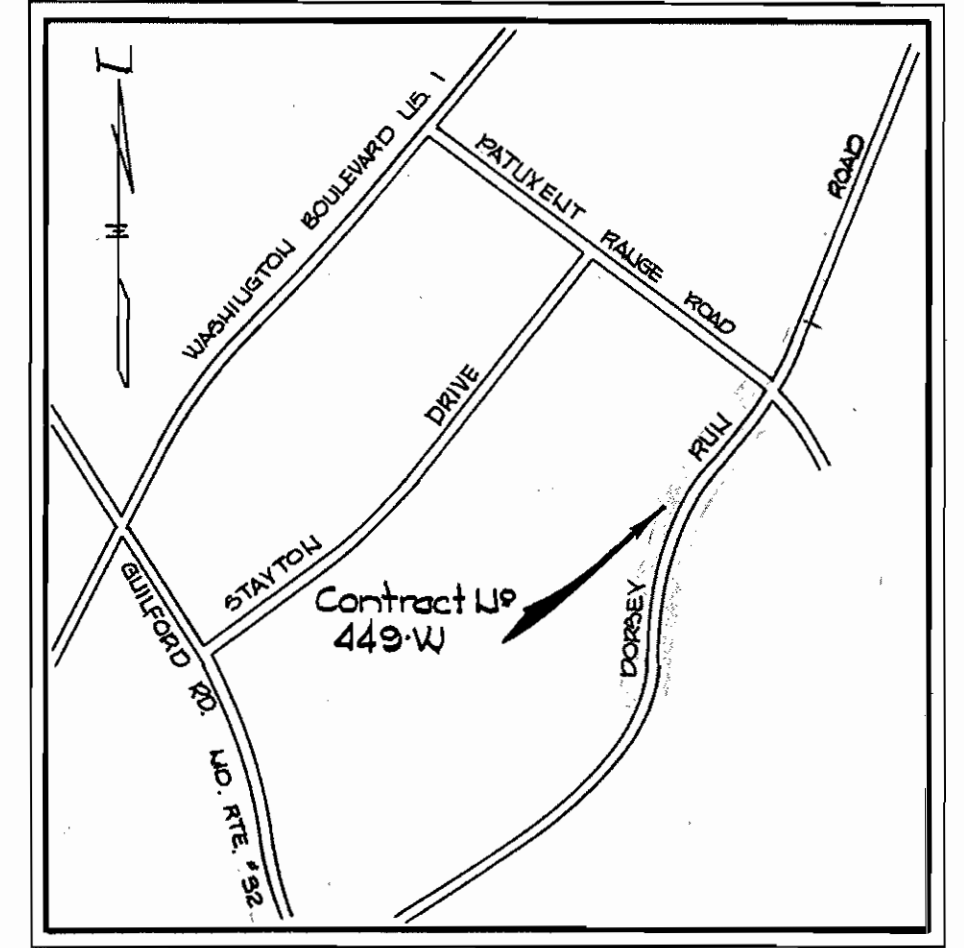
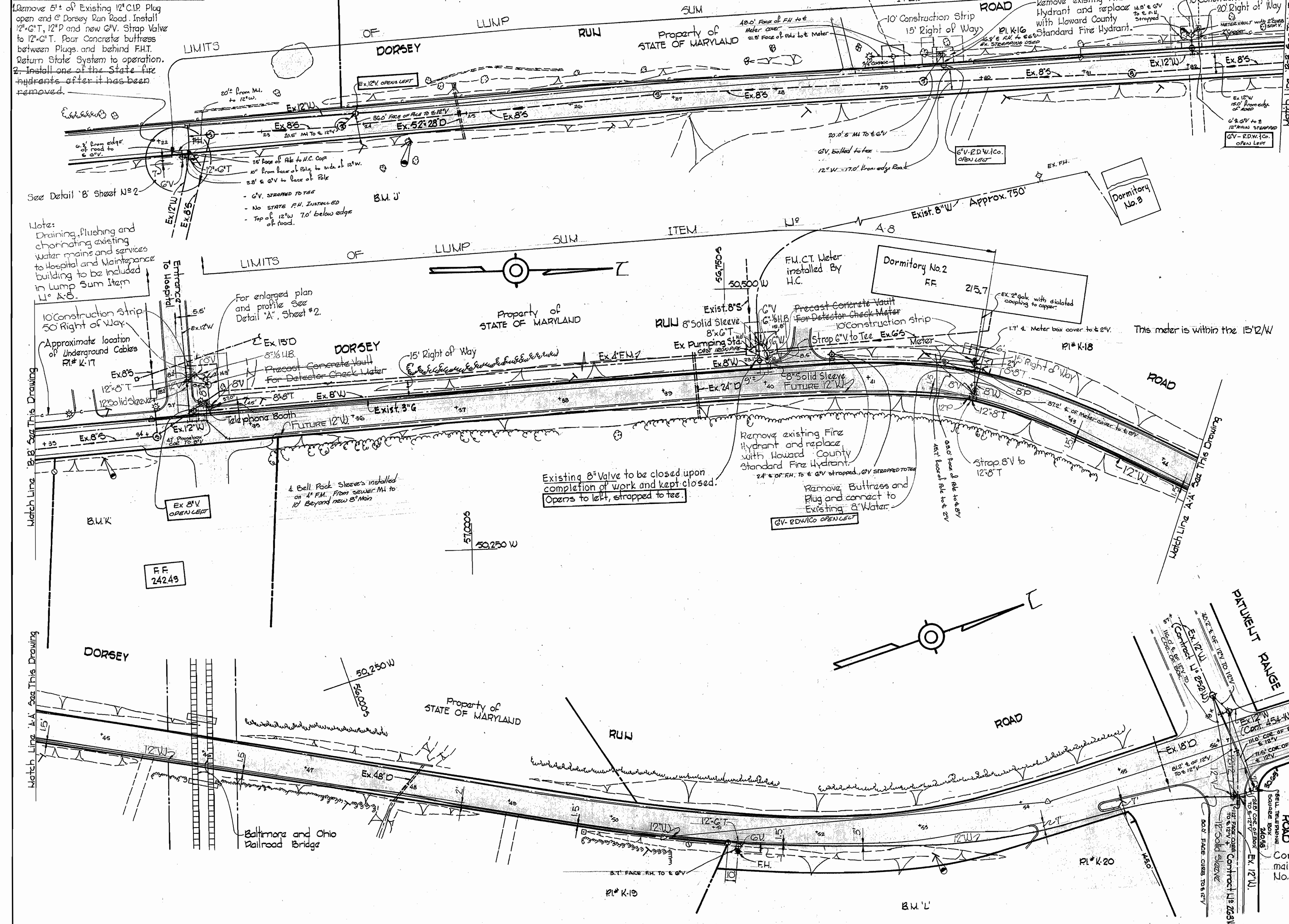
W.R.A. B.M. 'L' Elev. 212.828
RR spike in Power Pole GE #269656
40' Right of Sta. 2+60 Between
P.I. #K-19 & P.I. #K-20

Water located 45' ft. of F.H.
and 40' in back of E.H.

SEPARATION OF WATER SYSTEMS

1. Remove 5' of Existing 12" CIP Plug
open and Dorsey Run Road. Install
12" G.T., 12" P and new 6" V. Strap Valve
to 12" G.T. Pour concrete buttress
between Plugs and behind F.H.T.
Return State System to operation.
2. Install one of the State fire
hydrants after it has been removed.

Note:
Draining, flushing and
chlorinating existing
water mains and services
to Hospital and Maintenance
building to be included
in Lump Sum Item
No. A-6.

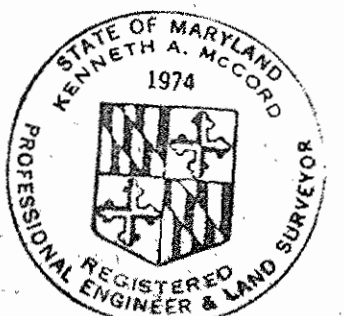


VICINITY MAP
Scale: 1:1200

GENERAL NOTES

- Approximate location of existing mains are shown. The Contractor shall take all necessary precautions to protect existing mains and services and maintain uninterrupted supply. Any damage incurred shall be repaired immediately.
- All pipe elevations shown are invert elevations.
- The Contractor shall locate existing utilities a minimum of two weeks in advance of construction operations in vicinity of utilities.
- For all standard details see standards bound in Specifications.
- All horizontal and vertical controls are based on Howard County Datum as extended from Baltimore County.
- Clear all utilities by a minimum of 6'; clear all poles by 2' minimum or tunnels as required.
- All water mains to have a minimum of 3 1/2' cover unless other wise noted.
- Block all fittings with concrete, see standards bound in Specifications.
- Bury line elevations on fire hydrants shall be set to the same as top of curb, edge of paving, or as directed by the Engineer in the field.
- Cost of strapping fire hydrants and valves to be included in the unit price bid for finishing and installing fire hydrants.
- All fire hydrants shall be strapped to the tee and shall be buttressed with concrete in accordance with Standard Details.
- Time of connections to be as directed by Howard County Dept. of Public Works. If may be at any time on any day or night.
- All existing fire hydrants removed shall become the property of the Department of Public Improvements of the State of Maryland. Two hydrants shall be delivered to the Physical Plant Supervisor of the Maryland House of Correction.

QUANTITIES	
12" Water	1400'
8" Water	70'
6" Water	15'
Fire Hydrants	4



Connect to existing 12" water main built under Contract No. 263-V.

PLAN
Scale: 1"=50'

Stakeout and Diary FB# 5406
Clifton T. Perkins Hospital
Contract No. 449-W

WHITMAN, REQUARDT & ASSOCIATES
ENGINEERS
1304 ST. PAUL ST.
BALTIMORE, MARYLAND

DEPARTMENT OF PUBLIC WORKS
HOWARD COUNTY, MARYLAND
DATE 6-5-72
W. O. Falberk
CHIEF - BUREAU OF WATER AND SEWER

CONTRACT NO. 449W

PLAN OF WATER MAINS

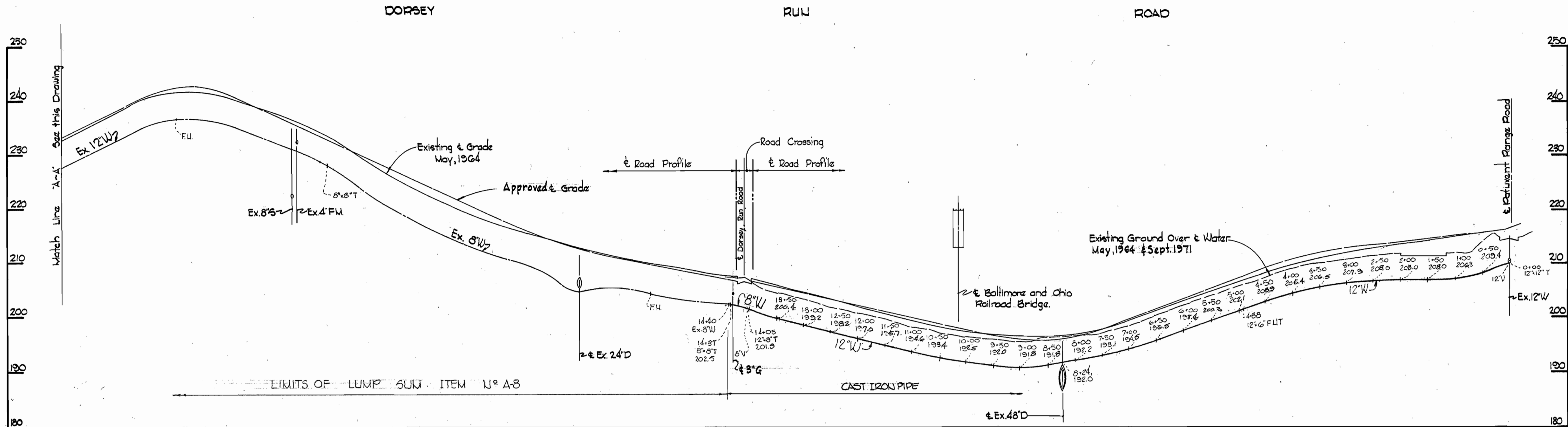
ELECTION DISTRICT GUILFORD NO. 6

DRAWING NO. 1 OF 2 SCALE AS SHOWN

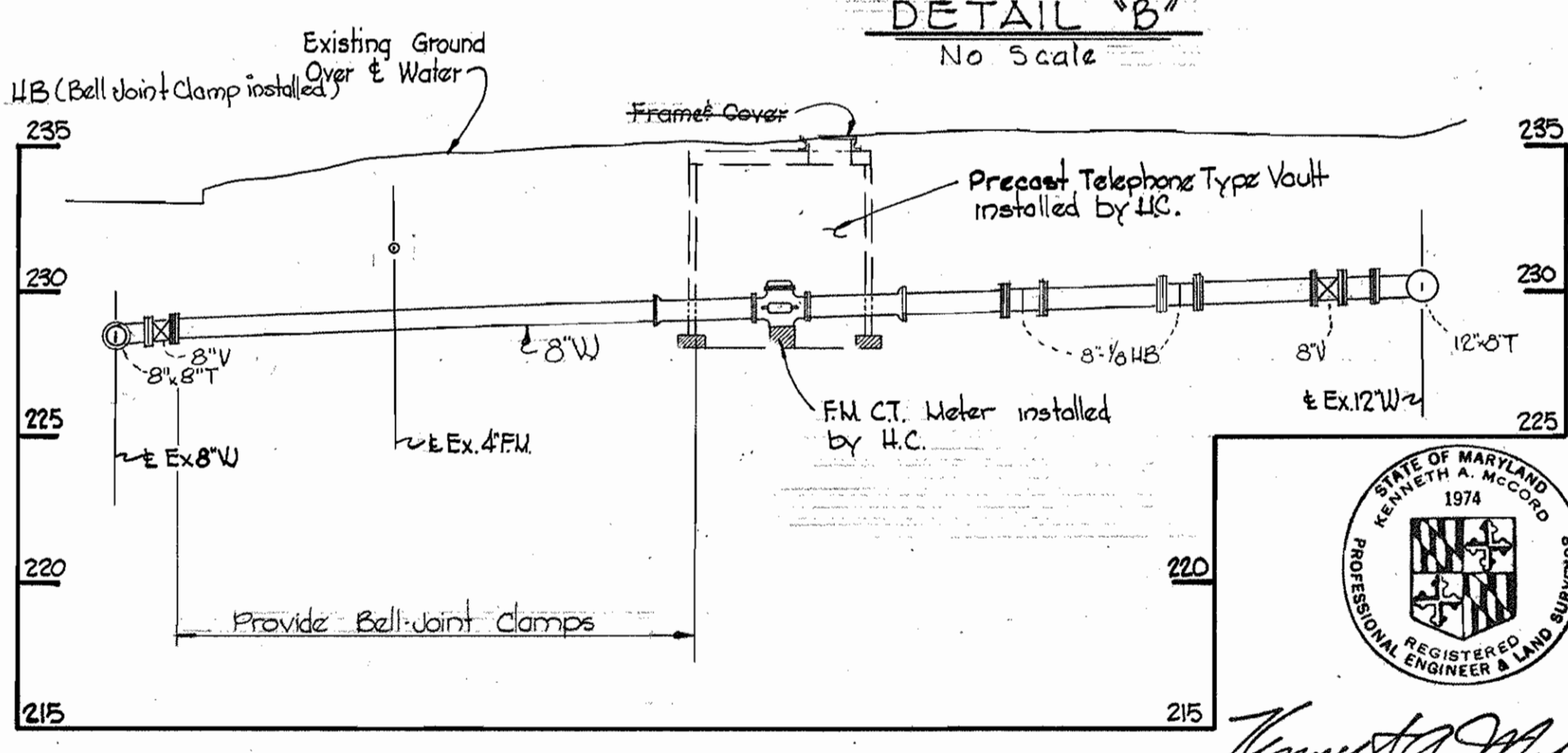
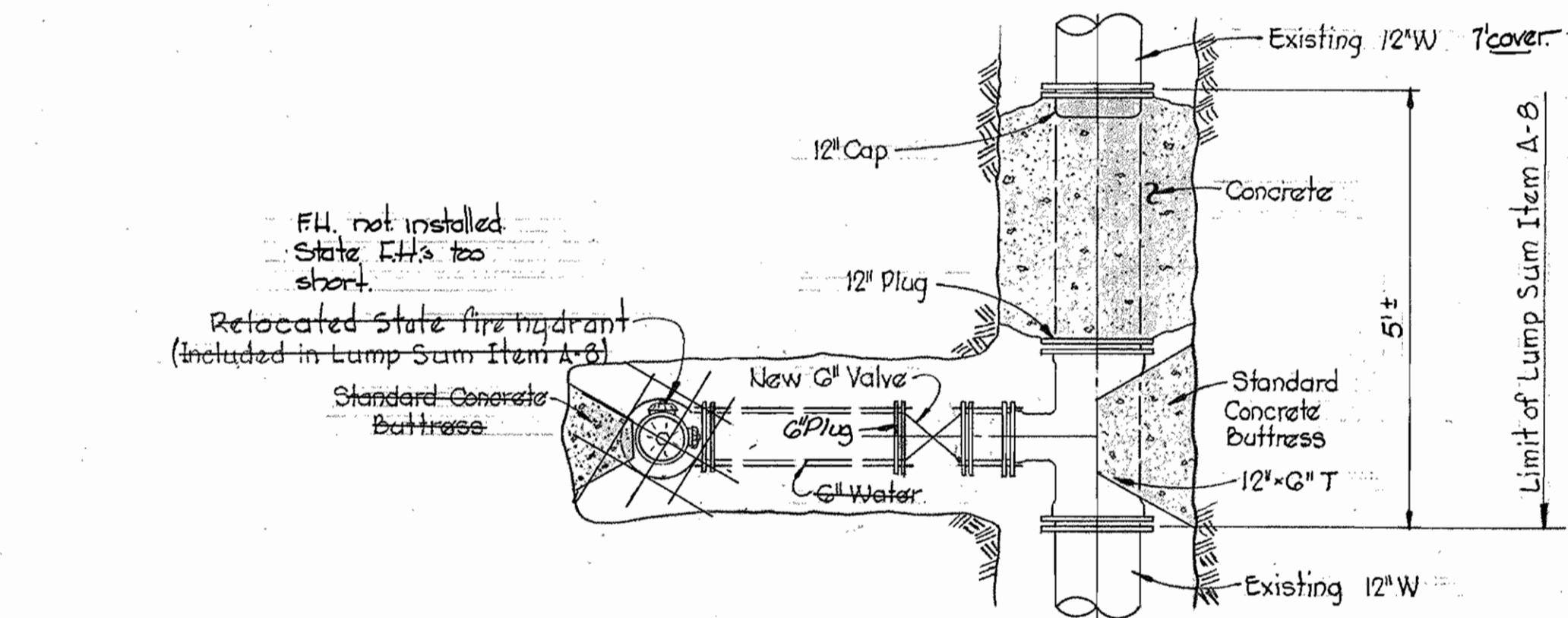
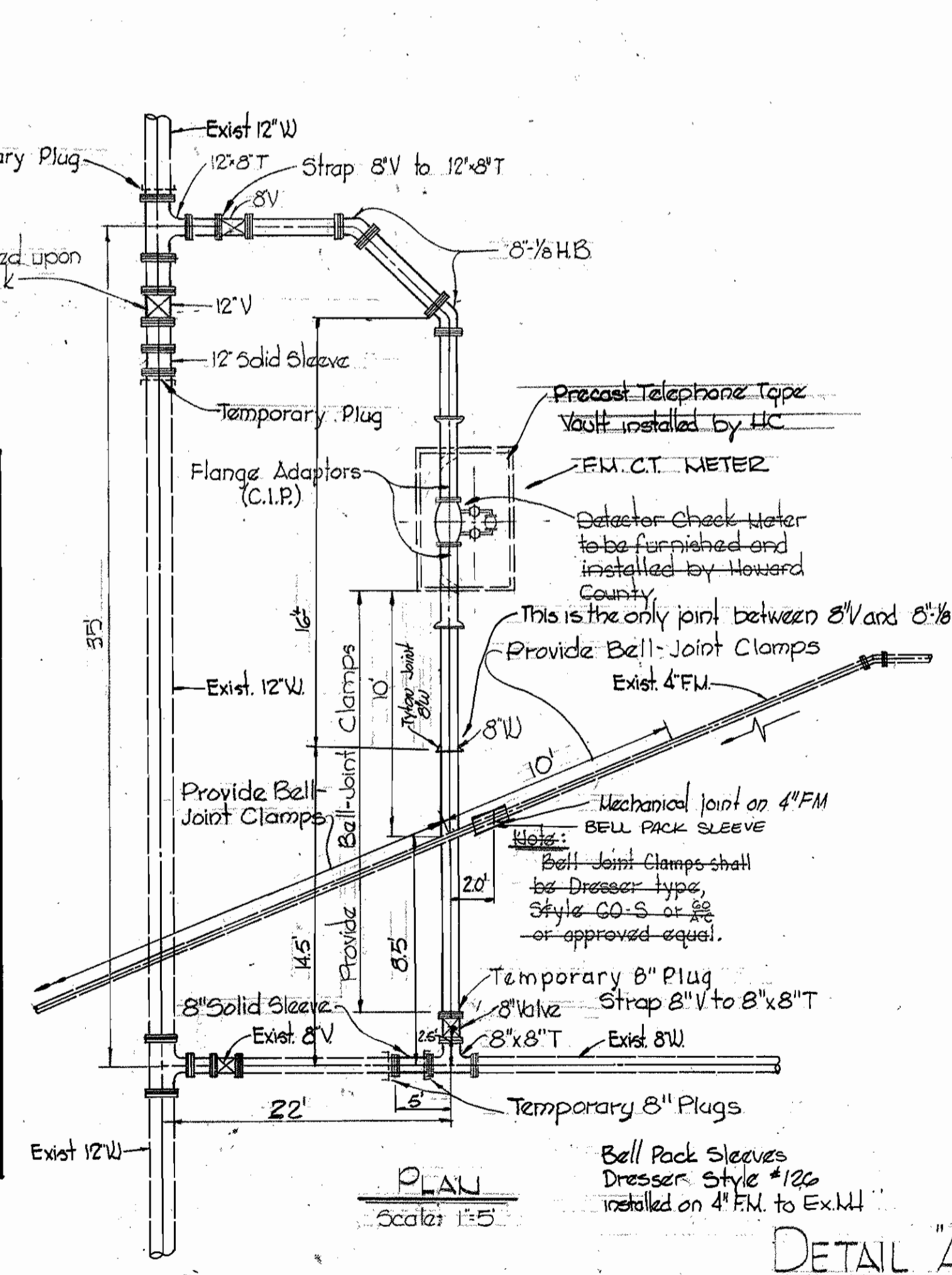
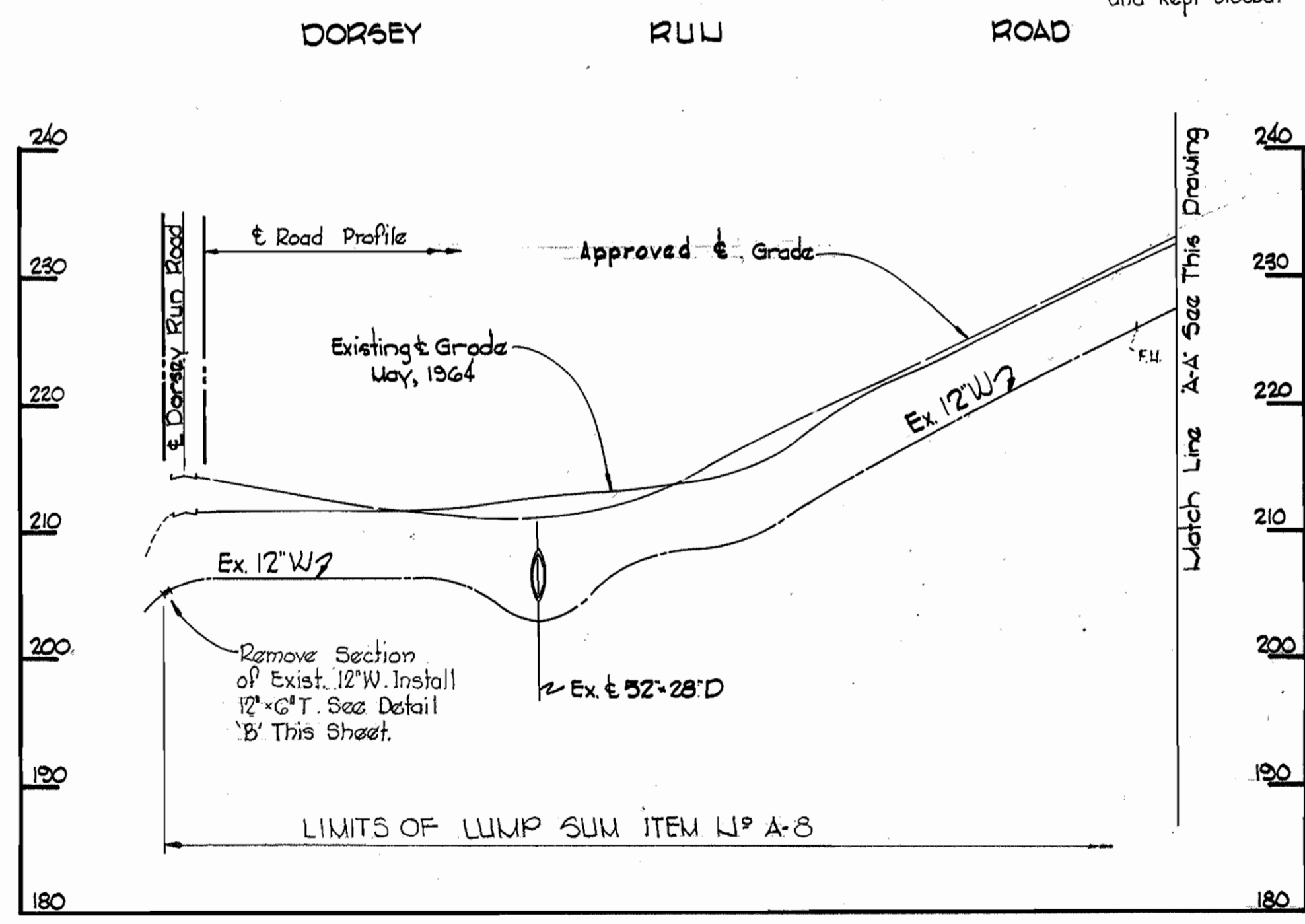
W. O. 6024-2

AS BUILT FB# 3180, 3177, 3178, 3179, 3181
AUGUST 23, 1973

WS 449-W/1



PROFILES
 Scale: Horiz 1"=100'
 Vert 1"=10'



STATE OF MARYLAND
 1974
 KENNETH A. MCCORD
 REGISTERED PROFESSIONAL ENGINEER & LAND SURVEYOR
 Kenneth A. McCord

Client: T. Purkins Hospital
 Contract U° 449-W

WHITMAN, REQUARDT & ASSOCIATES
 ENGINEERS
 1304 ST. PAUL ST.
 BALTIMORE, MARYLAND

DEPARTMENT OF PUBLIC WORKS
 HOWARD COUNTY, MARYLAND
 DATE 6-5-72
 W. O. Filbert
 CHIEF - BUREAU OF WATER AND SEWER

CONTRACT NO. 449-W

PROFILES AND DETAILS
 OF WATER MAINS

ELECTION DISTRICT
 GUILFORD NO. 6

DRAWING NO. 2 OF 2
 SCALE AS SHOWN

W. O. 6024-2

AUG 29, 1972 AS BUILT

WS 449-W/2