

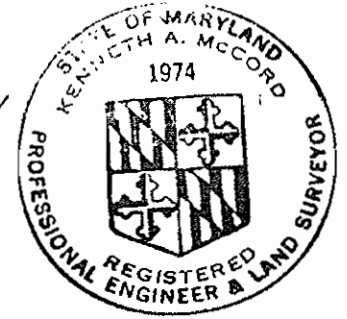
VICINITY MAP
Scale 1"=2000'

GENERAL NOTES

1. Approximate location of existing mains are shown. The Contractor shall take all necessary precautions to protect existing mains and services and maintain uninterrupted supply. Any damage incurred shall be repaired immediately.
2. All pipe elevations shown are invert elevations.
3. The Contractor shall locate existing utilities a minimum of two weeks in advance of construction operations in vicinity of utilities.
4. For all standard details see standards bound in specifications.
5. Clear all utilities by a minimum of 6'; clear all poles by 2'-0" minimum or tunnel as required.
6. The Contractor shall provide a joint in all sewer mains within 2'-0" of exterior manhole walls.
7. All manholes shall be 4'-0" inside diameter.
8. All water mains to have a minimum of 3 1/2' cover unless otherwise noted.
9. Block all fittings with concrete, see standards bound in specifications.
10. Bury Line elevations on fire hydrants shall be set to the elevations shown on the drawing.
11. All fire hydrants shall be strapped to the tee and shall be buttressed with concrete in accordance with standard details.
12. All W.H.C.'s to be 1' diameter unless otherwise noted.
13. All horizontal and vertical controls are based on Maryland State Datum.

QUANTITIES	
8" Sewer	2520
6" Water	2370
8" Water	1600
Fire Hydrants	4

W.R.A.B.M. W-95 Elev. 356.84'
Railroad Spike in base of 15'
Twin Poplar. Near P.L. W-361.



STAKE OUT & DIARY IN FB# 5045
A.P. SMITH F.H.'S. USED

Kenneth A. Milrod

Village of Longreach
Parcel C
Section 1 Area 2
Contract No. C-446 W/5

NO. 1	SCALE	498-486
OF 3	AS SHOWN	499-487
		498-486
		499-487

FB# 4554 MAY 5, 1972

Note:
Contract No. C-374 W/5 is currently under construction. If water and sewer mains labeled 'existing' are not built prior to construction of connecting mains under this contract, the contractor shall provide plugs at the points of connection.

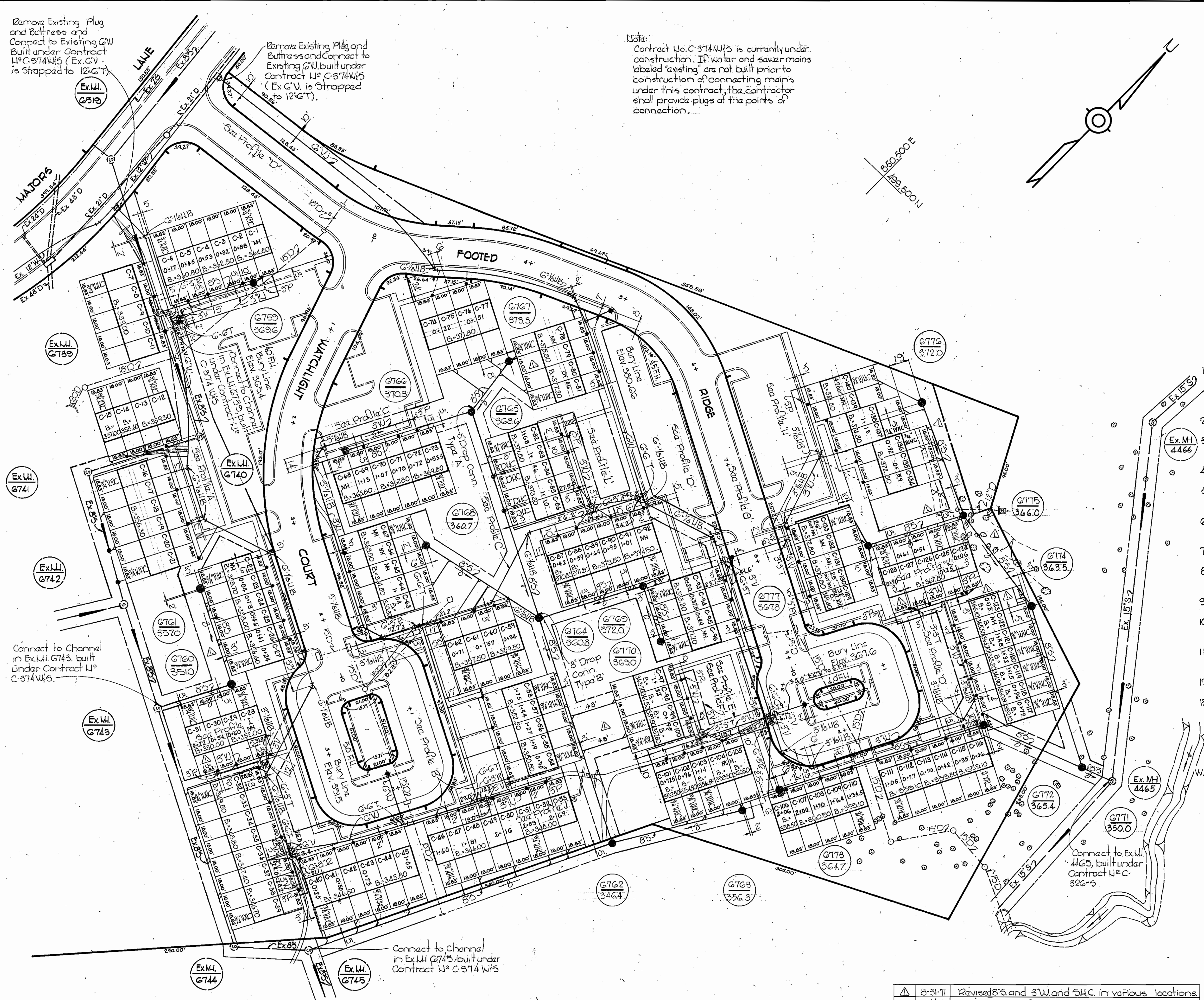
Remove Existing Plug and Buttress and Connect to Existing G.W. Built under Contract U# C-374 W/5 (Ex. G.V. is Strapped to 12" G.T.)

Remove Existing Plug and Buttress and Connect to Existing G.W. built under Contract U# C-374 W/5 (Ex. G.V. is Strapped to 12" G.T.)

Connect to Channel in Ex. M.H. 6743, built under Contract U# C-374 W/5.

Connect to Channel in Ex. M.H. 6745, built under Contract U# C-374 W/5

8-31-71	Revised S.S. and 3" W and S.H.C. in various locations.
Uo. Date	Reviser



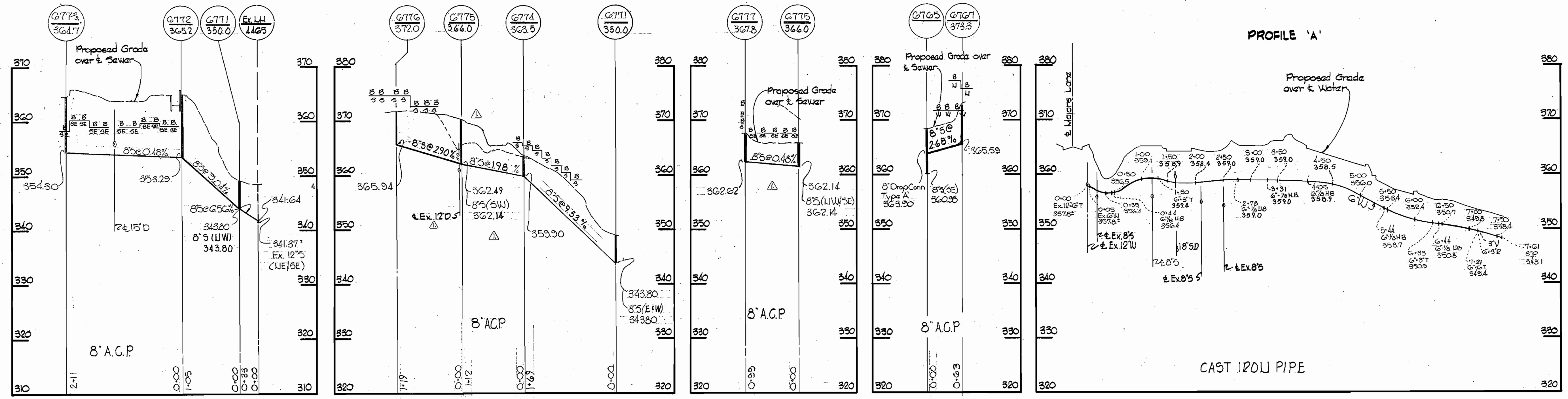
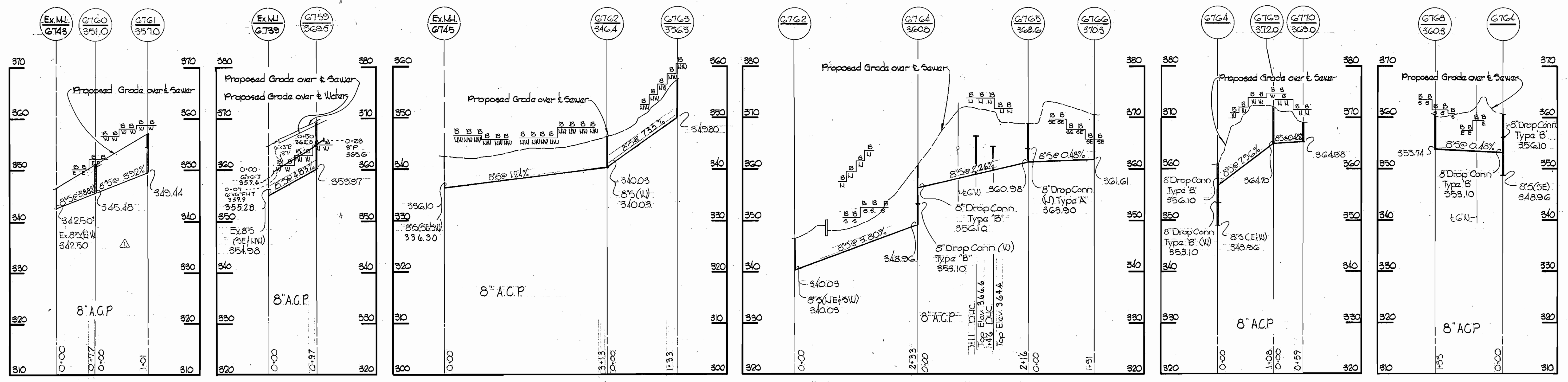
WHITMAN, REQUARDT & ASSOCIATES
ENGINEERS
1304 ST. PAUL ST.
BALTIMORE, MARYLAND

DEPARTMENT OF PUBLIC WORKS
HOWARD COUNTY, MARYLAND
7-27-71
J. O. Falbert
CHIEF - BUREAU OF WATER AND SEWER

CONTRACT NO. C-446 W/5

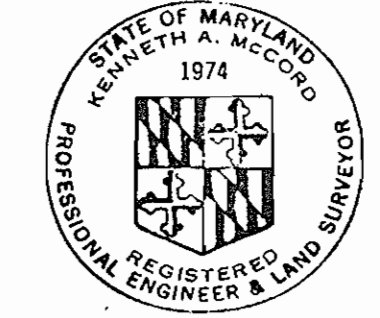
PLAN OF
WATER & SEWER MAINS

COLUMBIA
VILLAGE OF LONGREACH
ELECTION DISTRICT GUILFORD NO. 6



PROFILE 'A'

CAST 120U PIPE



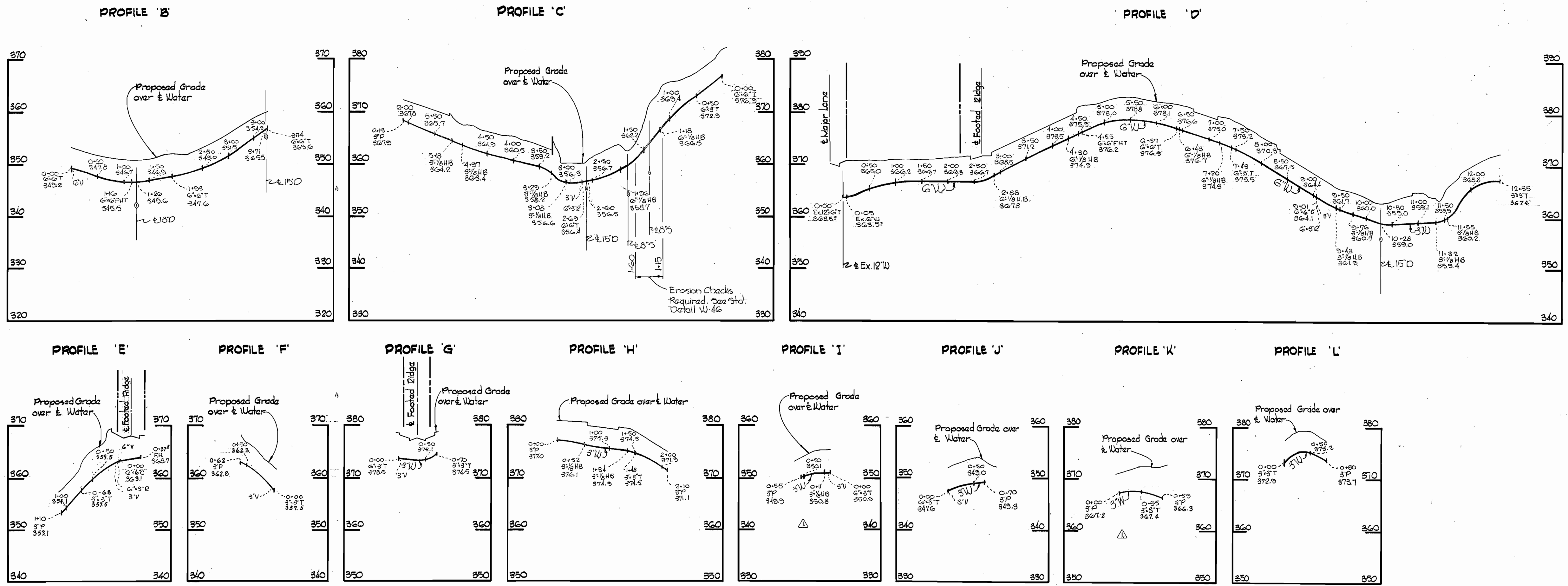
Kenneth A. McCord

Village of Longreach
Parcel C
Section 1, Area 2
Contract No. C-446 WBS

No.	Date	Revision
1	8-31-71	Revised 8'S and 3'W and 5'HC in various locations.

WHITMAN, REQUARDT & ASSOCIATES ENGINEERS 1304 ST. PAUL ST. BALTIMORE, MARYLAND	DEPARTMENT OF PUBLIC WORKS HOWARD COUNTY, MARYLAND 7-27-71 <i>W. O. Rubert</i> CHIEF - BUREAU OF WATER AND SEWER	CONTRACT NO. C-446 WBS	PROFILE OF WATER & SEWER MAINS	COLUMBIA VILLAGE OF LONGREACH ELECTION DISTRICT GUILFORD NO. 6	DRAWING NO. 2 OF 3	SCALE H:V = 100' V:1" = 10'
					MAY 5, 1972 AS BUILT	

WS 446-WBS/2



ALL WATER MAINS CAST IRON



Kenneth A. McCord

Village of Longreach
 Parcel C
 Section I Area 2
 Contract No. C-446 W&S

No	Date	Revision
1	8-31-71	Revised 85 and 3W and 34C in various locations

WHITMAN, REQUARDT & ASSOCIATES ENGINEERS 1304 ST. PAUL ST. BALTIMORE, MARYLAND	DEPARTMENT OF PUBLIC WORKS HOWARD COUNTY, MARYLAND 7-27-71 <i>W O Falbert</i> CHIEF - BUREAU OF WATER AND SEWER	CONTRACT NO. C-446 W&S	PROFILE OF WATER MAINS	COLUMBIA VILLAGE OF LONGREACH ELECTION DISTRICT GUILFORD NO. 6	DRAWING NO. 3	SCALE H:1"=100' V:1"=10'
					OF 3	AS BUILT

W. O. 6023-2

MAY 5, 1972 AS BUILT

WS 446-W&S/3