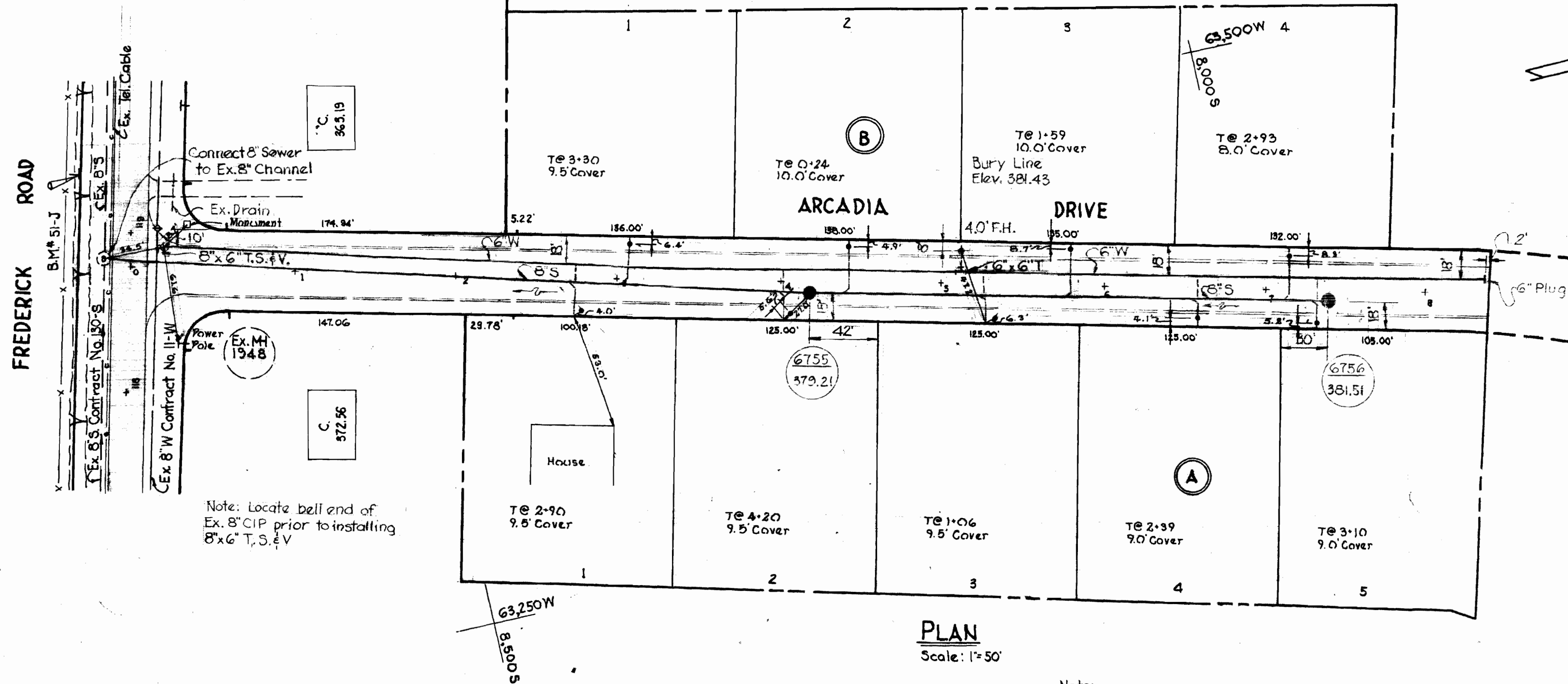
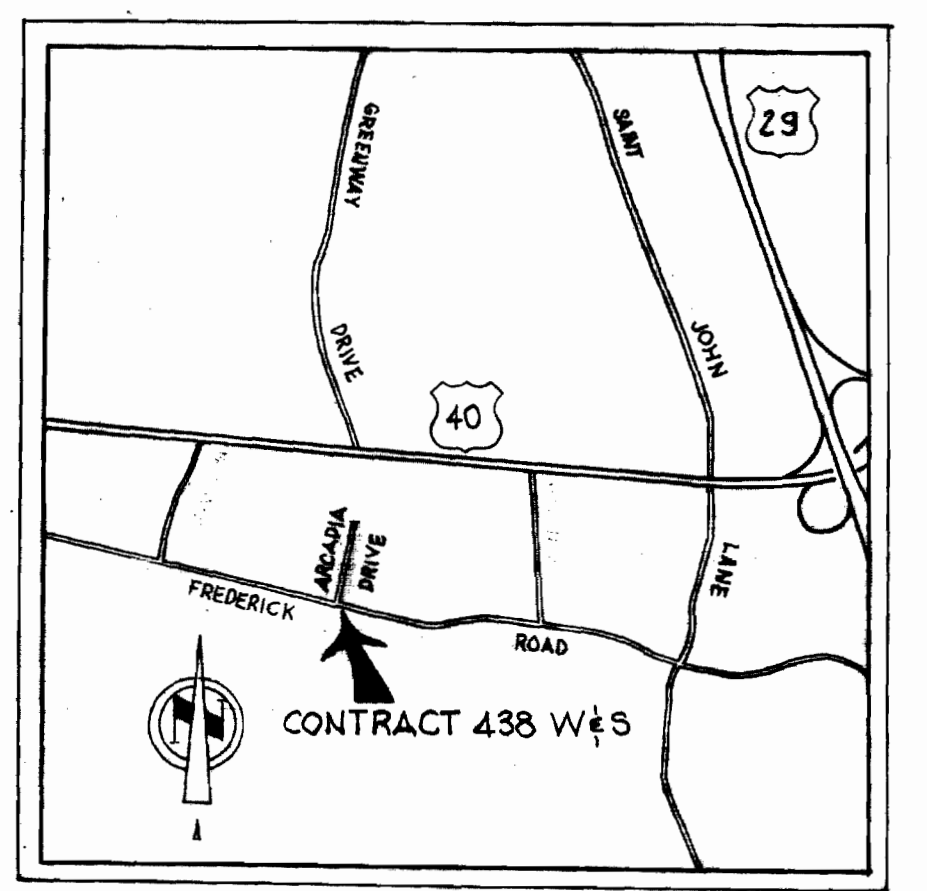


W.R.A. B.M. #51-J Elev. 869.25  
 R.R. spike in base of C.F.P. pole #498RY  
 S. side Frederick Rd. 500'± W. of Log  
 Cabin Lodge.



QUANTITIES	
8" Sewer	760'
6" Water	855'
Fire Hydrants	1

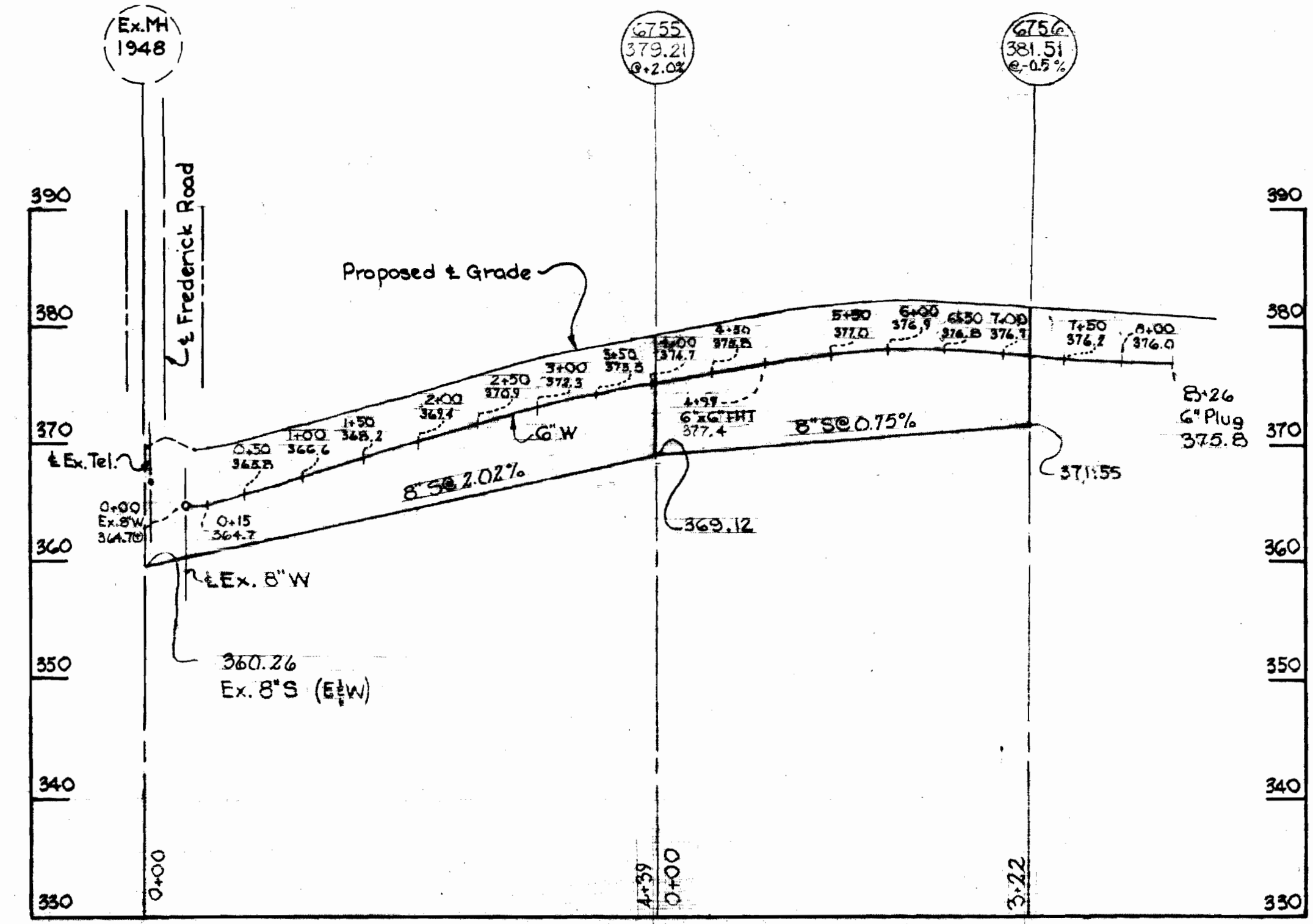


VICINITY MAP  
 Scale: 1"=2000'

**GENERAL NOTES**

1. Approximate location of existing mains are shown. The Contractor shall take all necessary precautions to protect existing mains and services and maintain uninterrupted supply. Any damage incurred shall be repaired immediately.
2. All pipe elevations shown are invert elevations.
3. The Contractor shall locate existing utilities a minimum of two weeks in advance of construction operations in vicinity of utilities.
4. For all standard details see standards in Specifications.
5. Clear all utilities by a minimum of 6"; clear all poles by 2'-0" minimum or tunnel as required.
6. All horizontal and vertical controls are based on Howard County Datum.
7. The Contractor shall provide a joint in all sewer mains within 2'-0" of exterior manhole walls.
8. All manholes shall be 4'-0" inside diameter.
9. All water mains to have a minimum of 3 1/2' cover unless otherwise noted.
10. Block all fittings with concrete, see standards bound in Specifications.
11. Bury Line elevations on fire hydrants shall be set to the elevations shown on the drawings.
12. All fire hydrants shall be strapped to the tee and shall be buttressed with concrete in accordance with standard details.

Note:  
 The Contractor shall notify the Chesapeake and Potomac Telephone Company prior to any construction activities in the vicinity of the Telephone Cables by Calling LExington @- 9900 Ext. 553, 554, or 555 in Baltimore, Md.



PROFILE  
 Scale: Horiz. 1"=100'  
 Vert. 1"=10'

STAKEOUT & DIARY I.D.F.B. #4886



*Kenneth M. Wood*  
 Nob Hill  
 Section Four  
 Contract No. 438 W+S

<b>WHITMAN, REQUARDT &amp; ASSOCIATES</b> ENGINEERS 1304 ST. PAUL ST. BALTIMORE, MARYLAND	DEPARTMENT OF PUBLIC WORKS HOWARD COUNTY, MARYLAND 7-18-71 DATE <i>W. O. G. 24-2</i> CHIEF - BUREAU OF WATER AND SEWER	CONTRACT NO. 438-W+S	PLAN AND PROFILE OF WATER & SEWER MAINS	ELECTION DISTRICT ELLICOTT CITY NO. 2	DRAWING NO. 1 OF 1	SCALE AS SHOWN
					85W 43 95W 43	

W. O. G. 24-2

AS BUILT MAY 4, 1972

WS 438-W+S

BRL: NING 4-510 14778