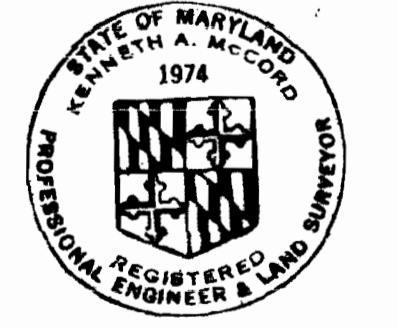


VICINITY MAP
Scale: 1" = 2000'

GENERAL NOTES

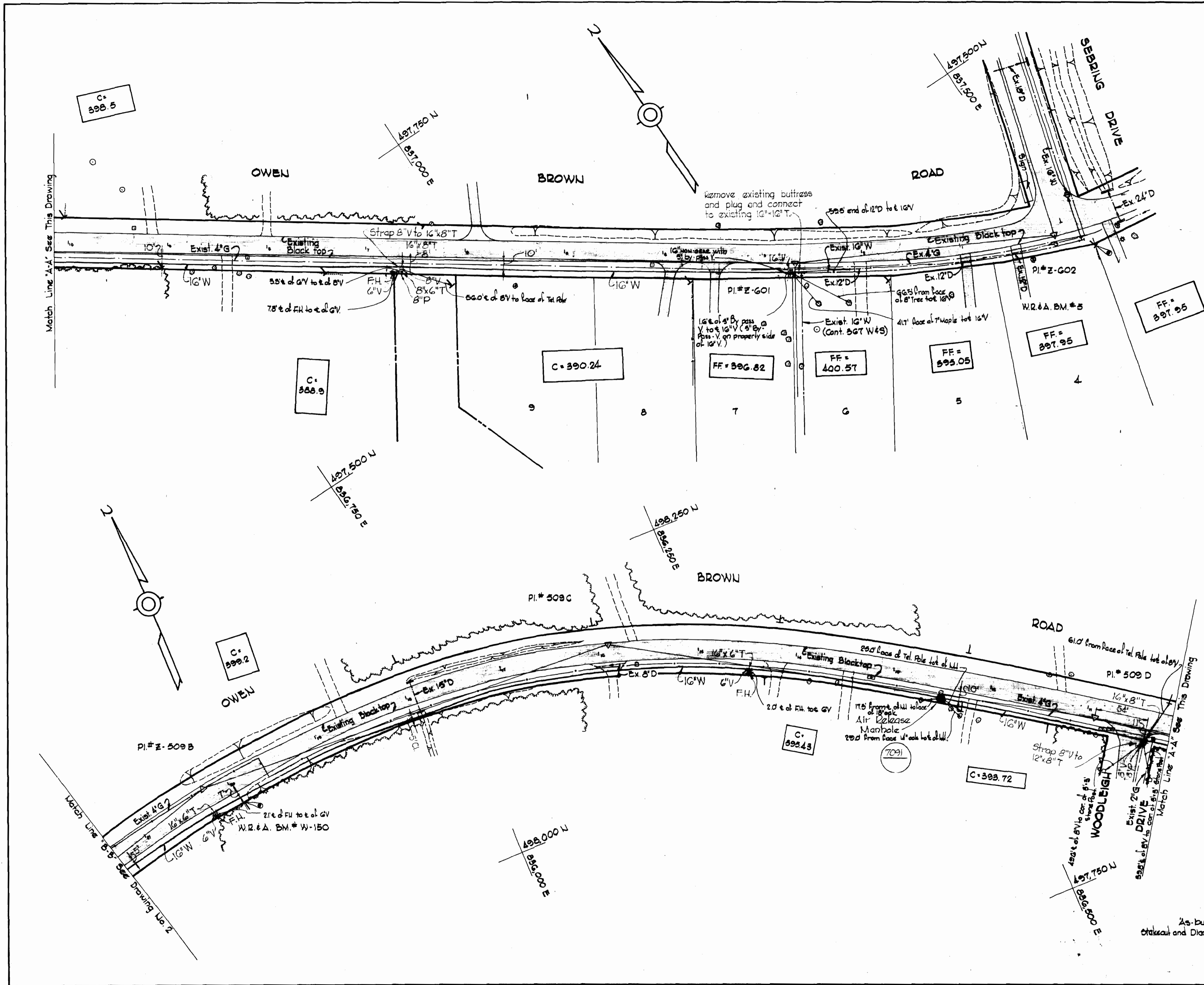
1. Approximate location of existing mains are shown. The Contractor shall take all necessary precautions to protect existing mains and services and maintain uninterrupted supply. Any damage incurred shall be repaired immediately.
2. All pipe elevations shown are invert elevations.
3. The Contractor shall locate existing utilities a minimum of two weeks in advance of construction operations in vicinity of utilities.
4. For all standard details see standards bound in Specifications.
5. Clear all utilities by a minimum of 6", clear all poles by 2'-0" minimum or tunnel as required.
6. All water mains to have a minimum of 3 1/2' cover unless otherwise noted.
7. Block all fittings with concrete, see standards bound in Specifications.
8. Bury Line elevations on fire hydrants shall be set to the elevation shown on drawings or as directed by the Engineer in the field.
9. All fire hydrants shall be strapped to the tee and shall be buttressed with concrete in accordance with standard Details.
10. All horizontal and vertical controls are based on Maryland State Datum.

QUANTITIES	
ITEM	QUANTITY
16" Water (DIP)	4,350 LF.
12" Water (C.I.P.)	500 LF.
Fire Hydrant (W.I.W.)	8



Kenneth A. McLeod

As-built
Checked and Diary - Feb. 1978



WHITMAN, REQUARDT & ASSOCIATES
ENGINEERS
1304 ST. PAUL ST.
BALTIMORE, MARYLAND

DEPARTMENT OF PUBLIC WORKS
HOWARD COUNTY, MARYLAND
12-12-72
W. O. Galt
CHIEF - BUREAU OF WATER AND SEWER

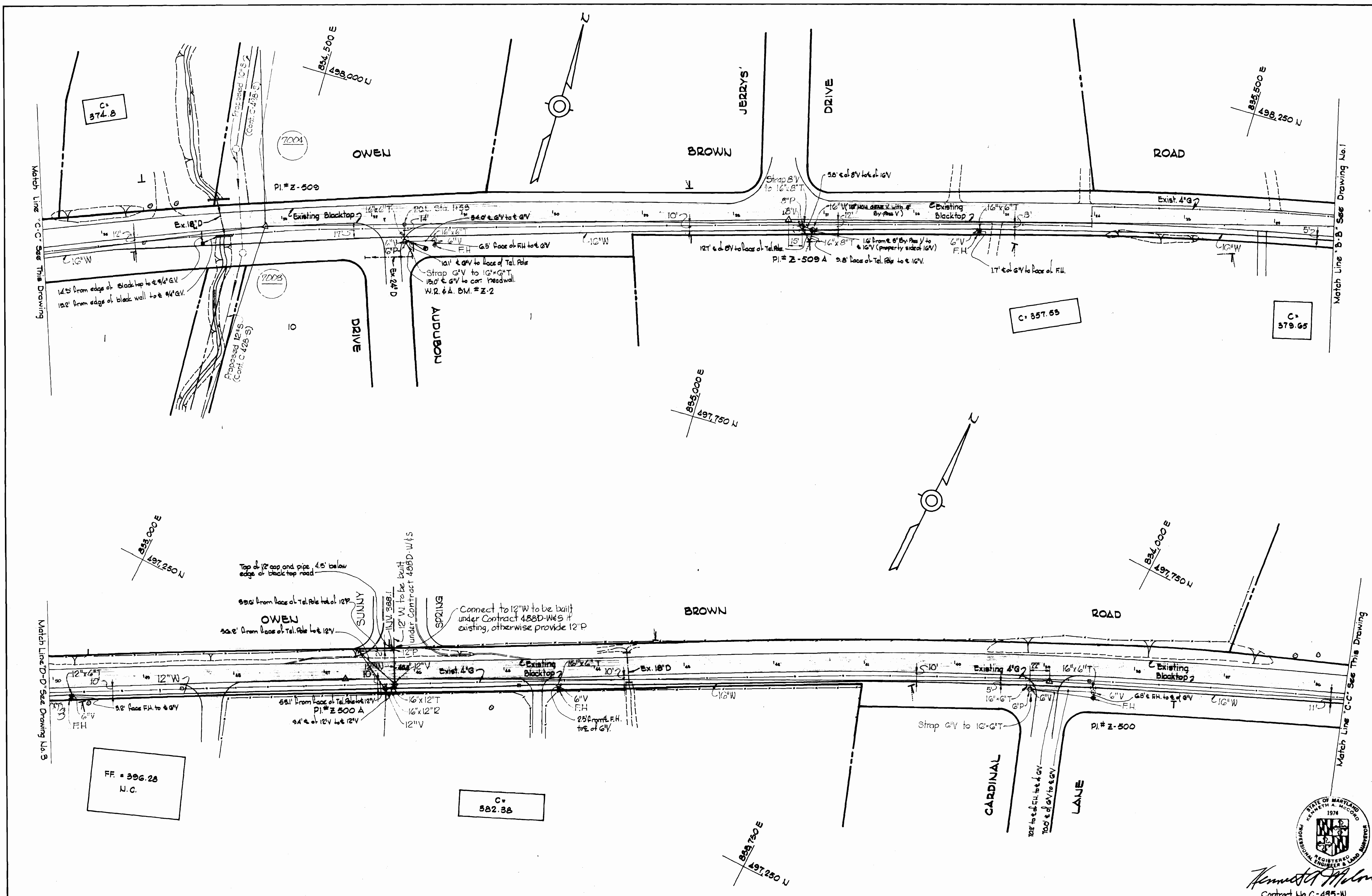
CONTRACT NO. C-435 W

PLAN OF
WATER MAINS

COLUMBIA
OWEN BROWN ROAD WATER MAIN
ELECTION DISTRICT - CLARKSVILLE - NO. 5

CONTRACT NO. C-435-W
DRAWING NO. 1 OF 3
SCALE 1" = 50'

AS BUILT Aug. 6, 1978 PB# 4691, 5000



WHITMAN, REQUARDT & ASSOCIATES
 ENGINEERS
 1304 ST. PAUL ST.
 BALTIMORE, MARYLAND

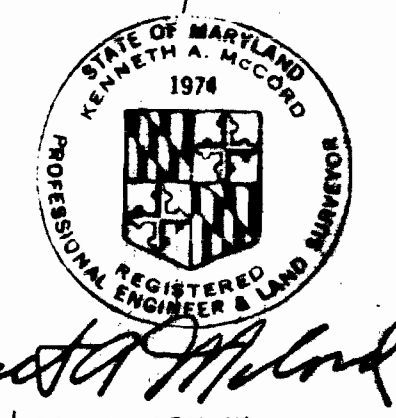
DEPARTMENT OF PUBLIC WORKS
 HOWARD COUNTY, MARYLAND
 DATE 12-17-73
 CHIEF - BUREAU OF WATER AND SEWER

CONTRACT NO. C-435 W

PLAN OF
 WATER MAINS

COLUMBIA
 OWEN BROWN ROAD WATER MAIN
 ELECTION DISTRICT - CLARKSVILLE - NO. 5

DRAWING NO. 2 OF 3
 SCALE 1" = 50'

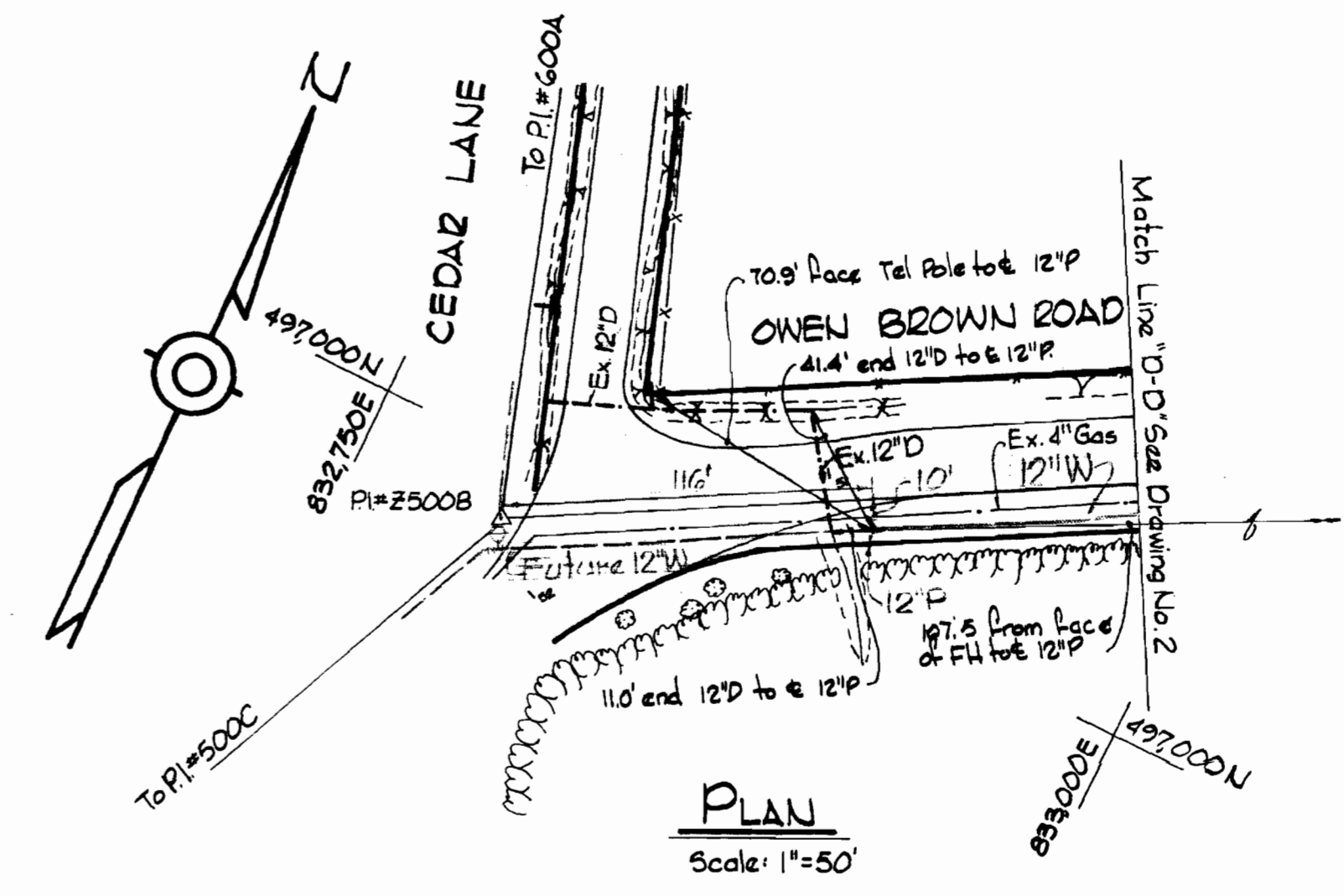
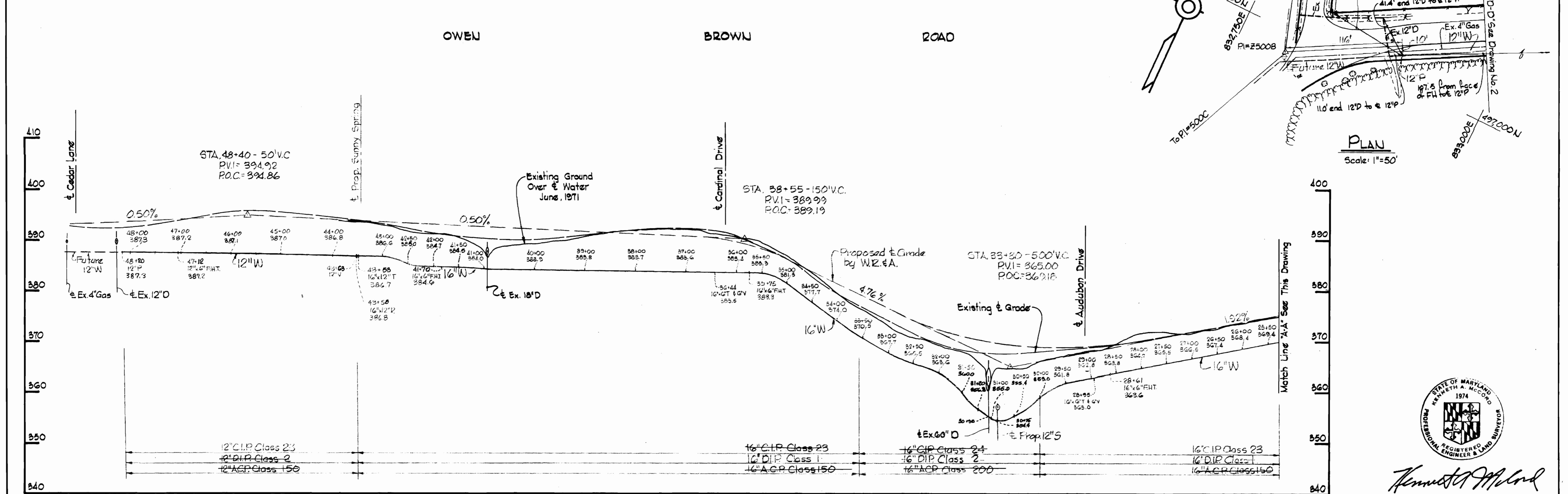
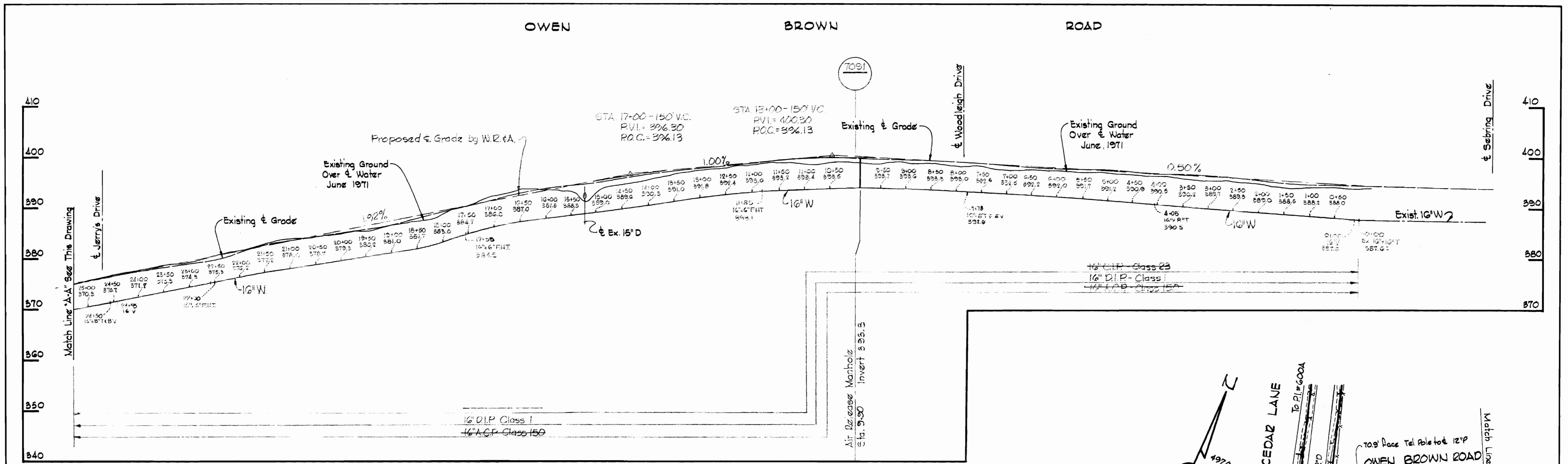


Kenneth A. McCord
 Contract No. C-435-W

RUNNING 44-510 14778

W. O. G023-2

AS BUILT Aug 6, 1973 FB# 5000, 4966



PROFILES

Scale: Horiz: 1"=100'
Vert: 1"=10'



Kenneth A. Accardo

Contract No. C-435-W

<p>WHITMAN, REQUARDT & ASSOCIATES ENGINEERS 1304 ST. PAUL ST. BALTIMORE, MARYLAND</p>	<p>DEPARTMENT OF PUBLIC WORKS HOWARD COUNTY, MARYLAND 12-12-72 DATE</p> <p><i>W. O. Fulbert</i> CHIEF - BUREAU OF WATER AND SEWER</p>	<p>CONTRACT NO. C-435 W</p>	<p>PLAN AND PROFILES OF WATER MAINS</p>	<p>COLUMBIA OWEN BROWN ROAD WATER MAIN ELECTION DISTRICT - CLARKSVILLE - NO. 5</p>	<p>DRAWING NO. 3 OF 3 SCALE AS SHOWN</p>
---	---	-----------------------------	---	--	--

W. O. GO23-2

Aug. 6, 1973 AS BUILT

WS 435-W/3

BRUNING 44-510 14778