

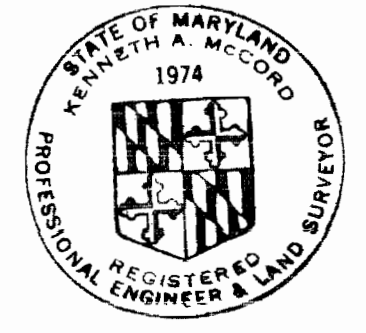
VICINITY MAP
Scale: 1"=1200'

GENERAL NOTES

1. Approximate location of existing mains are shown. The Contractor shall take all necessary precautions to protect existing mains and services and maintain uninterrupted supply. Any damage incurred shall be repaired immediately.
2. All pipe elevations shown are invert elevations.
3. The Contractor shall locate existing utilities a minimum of two weeks in advance of construction operations in vicinity of utilities.
4. For all standard details see standards bound in Specifications.
5. All horizontal and vertical controls are based on Maryland State Datum.
6. Clear all utilities by a minimum of 6'; Clear all poles by a minimum of 20' or tunnel as required.
7. All water mains to have a minimum of 3 1/2' cover.
8. Block all fitting with concrete, see standards bound in Specifications.
9. All manholes shall be 4'-0" inside diameter.
10. The Contractor shall provide a joint in all sewer pipe within 2'-0" of exterior manhole walls.
11. Bury Line elevations on fire hydrants shall be set to the elevations shown on the drawing.
12. All fire hydrants shall be strapped to the tee and shall be buttressed with concrete in accordance with standard details.

QUANTITIES	
8" Sewer	700'
8" Water	650'
Fire Hydrants	1

Stakeout and Diary File Log



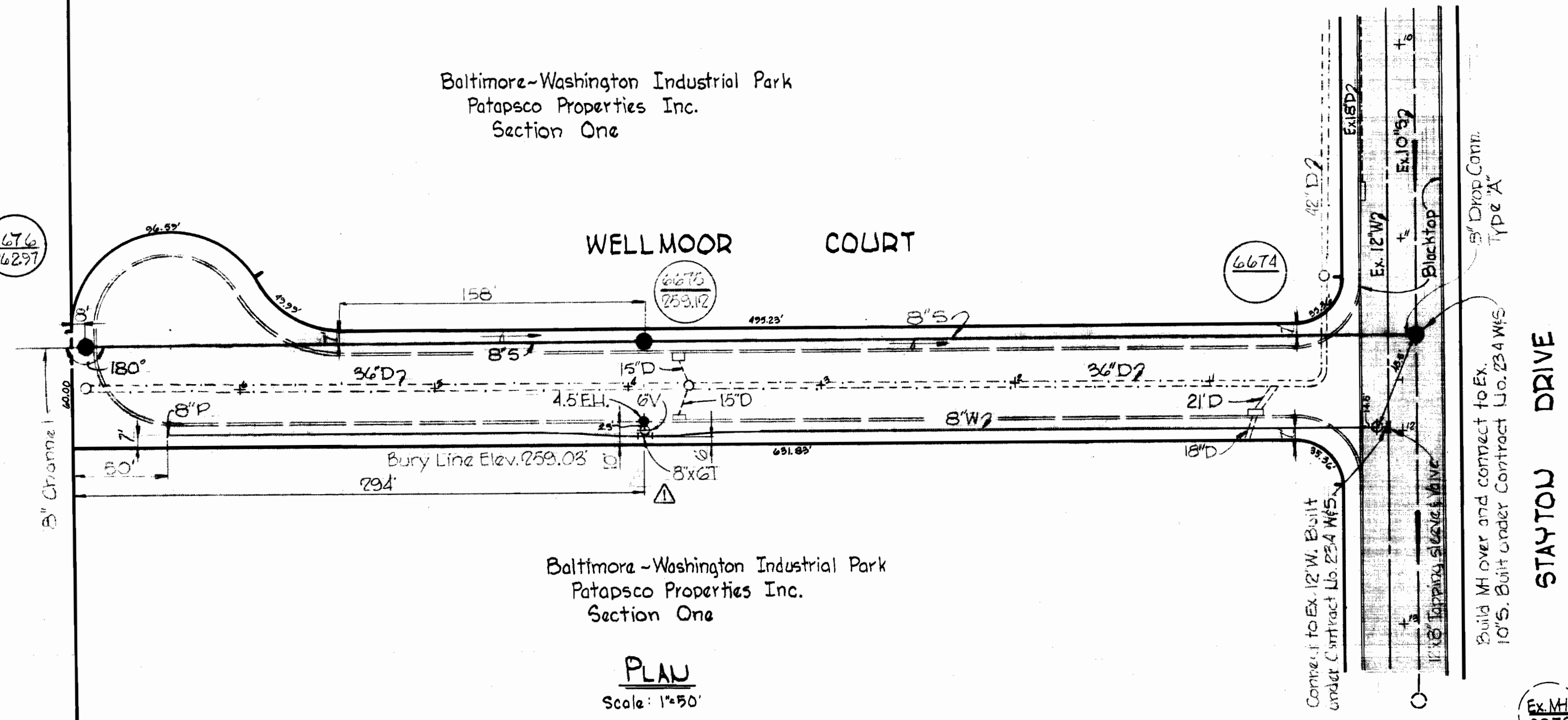
Kenneth A. McCord

Baltimore-Washington Industrial Park
Parcel 'A' Block 'B'
Wellmoor Court
Contract No. 416 W&S

DRAWING NO. OF	SCALE AS SHOWN	478-489 478-490 479-489
----------------	----------------	-------------------------------

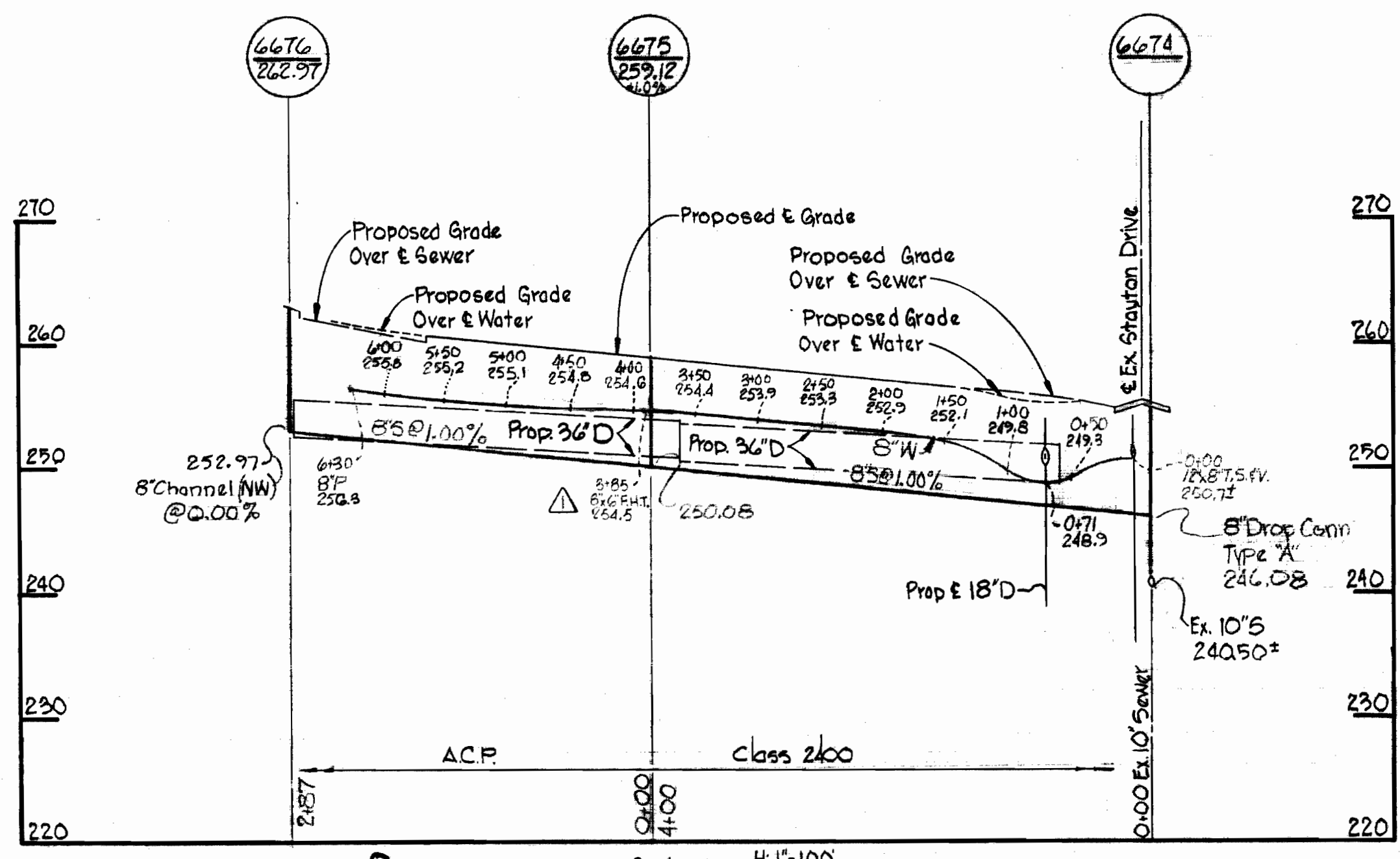
Baltimore-Washington Industrial Park
Patapsco Properties Inc.
Section One

PARCEL 'A'



Baltimore-Washington Industrial Park
Patapsco Properties Inc.
Section One

PLAN
Scale: 1"=50'



PROFILE
Scale: H: 1"=100'
V: 1"=10'

No.	Date	Revision
1	4-16-71	Added Fire Hydrant on Wellmoor Court.

WHITMAN, REQUARDT & ASSOCIATES
ENGINEERS
1304 ST. PAUL ST.
BALTIMORE, MARYLAND

DEPARTMENT OF PUBLIC WORKS
HOWARD COUNTY, MARYLAND
4-6-71
W. O. Gilbert
CHIEF-BUREAU OF WATER AND SEWER

CONTRACT NO. 416 W&S

PLAN & PROFILE OF
WATER & SEWER MAINS

ELECTION DISTRICT
GUILFORD NO. 6

WS 416-W&S/1