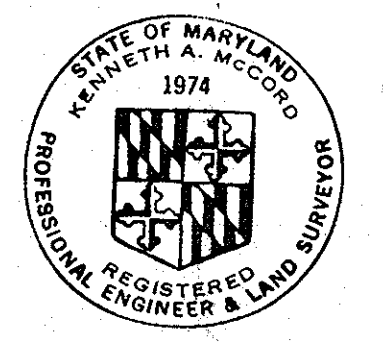


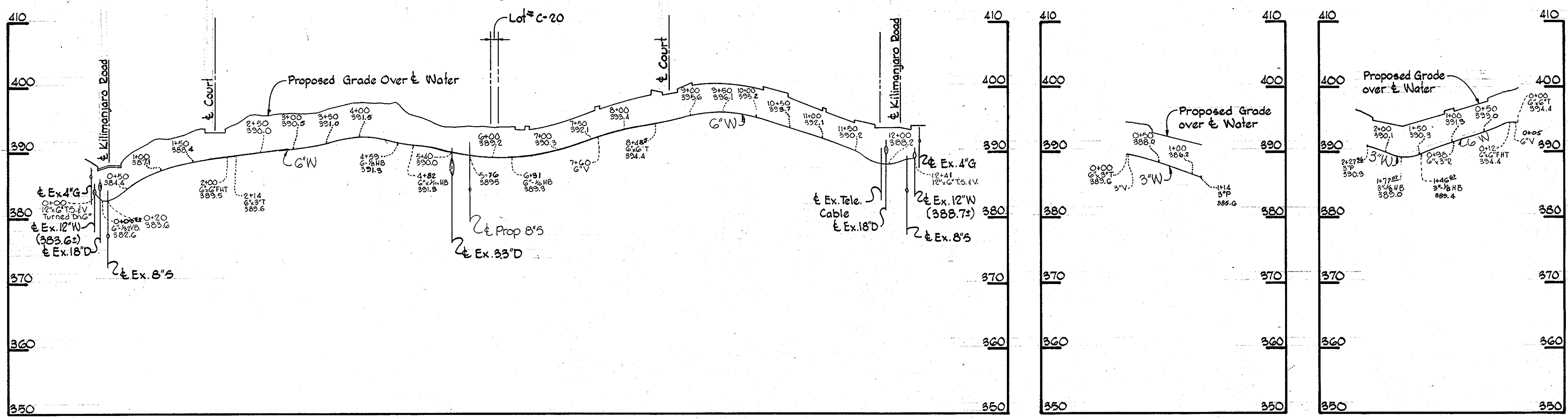
**8" SEWER MAIN EXTENSION:
OAKLAND MILLS HIGH SCHOOL**

SCALE: HOR. : 1" = 50'
VERT. : 1" = 5'

ALL SEWER PIPE A.C.P.
ALL WATER PIPE C.I.P.



Kenneth A. McLeod

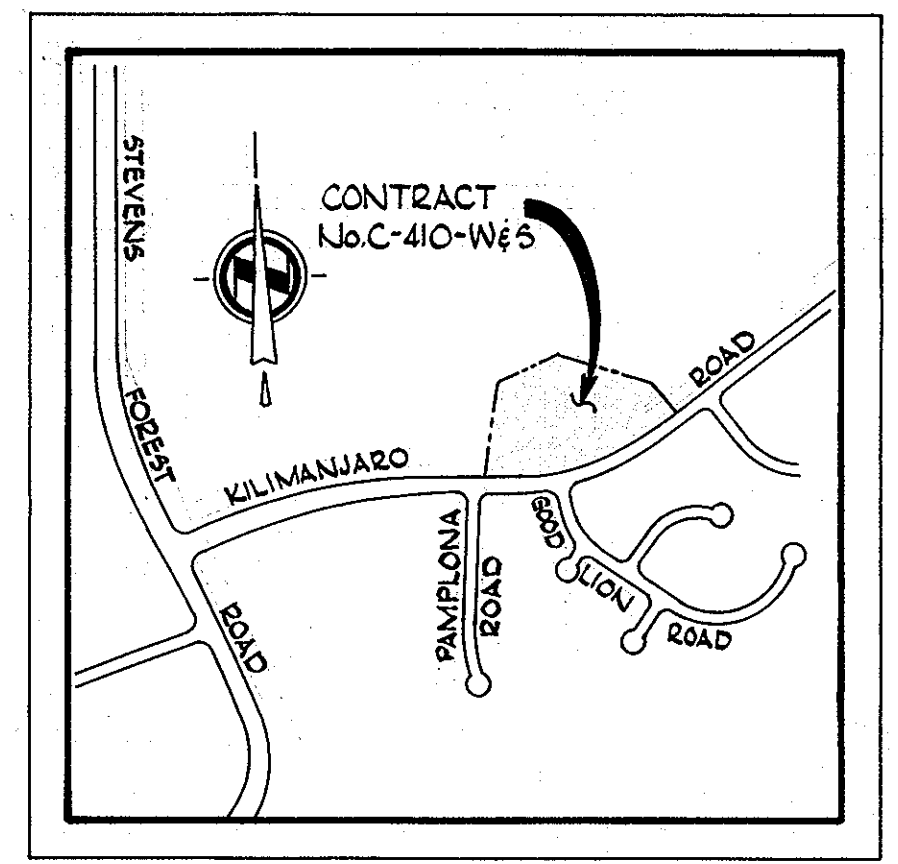
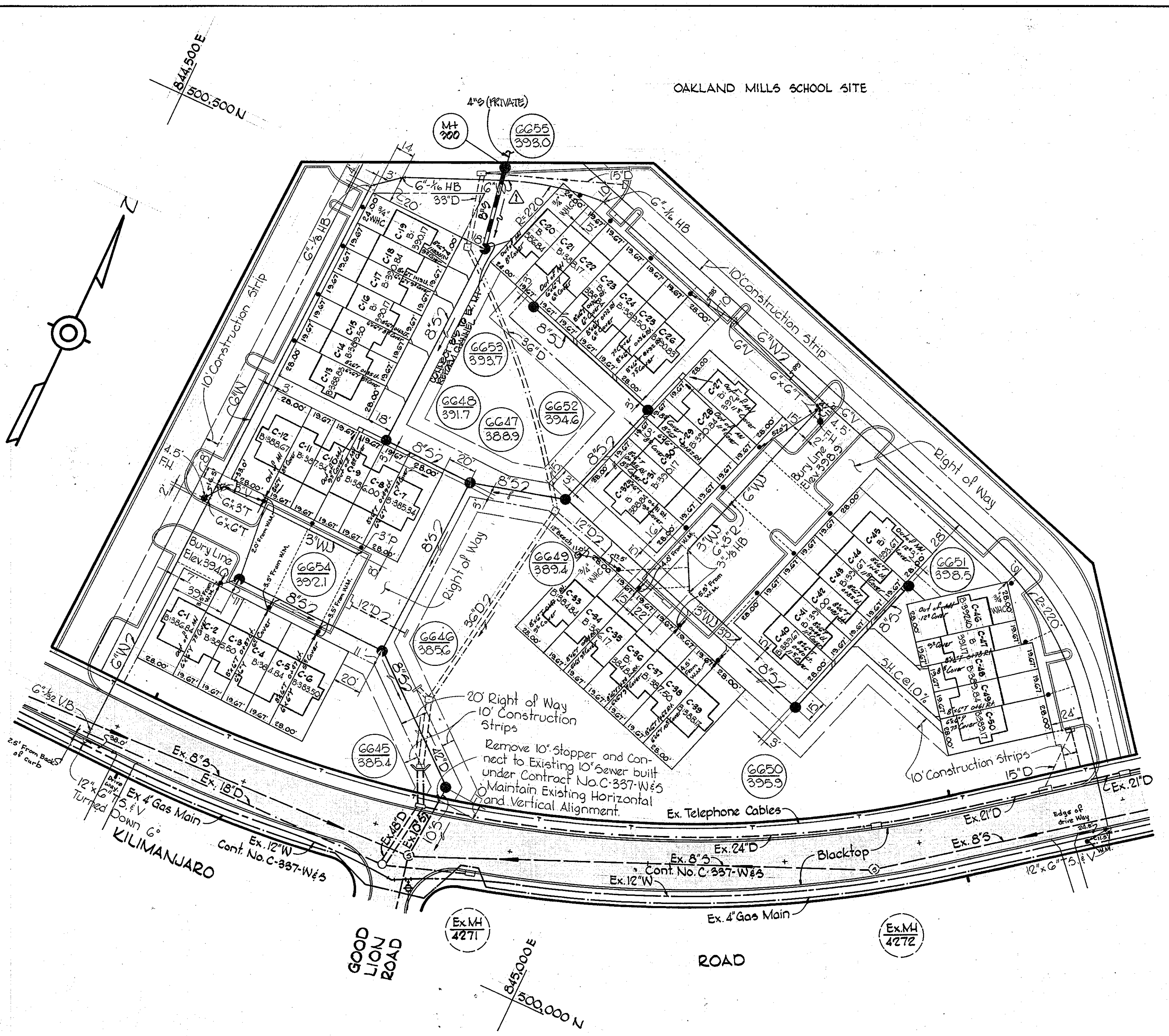


ADD PROFILE: 8\"/>

Artery Communities
Village of Oakland Mills
Section 2, Area 4
Contract No. C-410-W&S

WHITMAN, REQUARDT & ASSOCIATES ENGINEERS 1304 ST. PAUL ST. BALTIMORE, MARYLAND	DEPARTMENT OF PUBLIC WORKS HOWARD COUNTY, MARYLAND 3-24-72 <i>W O Gilbert</i> CHIEF - BUREAU OF WATER AND SEWER	CONTRACT NO. C-410 W&S	PROFILES OF WATER & SEWER MAINS	COLUMBIA VILLAGE OF OAKLAND MILLS ELECTION DISTRICT GUILFORD NO. 6	DRAWING NO. 2 OF 2 SCALE H:1"=100' V:1"=10' AS BUILT DEC. 13, 1972
--	--	-----------------------------------	--	---	--

WS 410-W&S/2



VICINITY MAP
Scale: 1"=800'

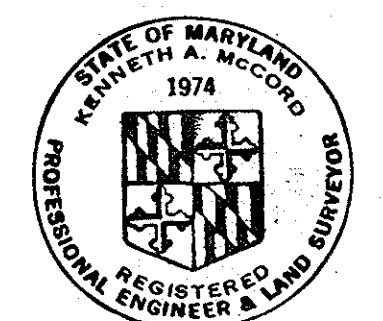
- GENERAL NOTES**
1. Approximate location of existing mains are shown. The Contractor shall take all necessary precautions to protect existing mains and services and maintain uninterrupted supply. Any damage incurred shall be repaired immediately.
 2. All pipe elevations shown are invert elevations.
 3. The Contractor shall locate existing utilities a minimum of two weeks in advance of construction operations in vicinity of utilities.
 4. For all standard details see standards bound in specifications.
 5. Clear all utilities by a minimum of 6"; clear all poles by 2'-0" minimum or tunnel as required.
 6. The Contractor shall provide a joint in all sewer mains within 2'-0" of exterior manhole walls.
 7. All manholes shall be 4'-0" inside diameter.
 8. All water mains to have a minimum of 3 1/2' cover unless otherwise noted.
 9. Block all fittings with concrete, see standards bound in specifications.
 10. Bury Line elevations on fire hydrants shall be set to the elevations shown on the drawings.
 11. All fire hydrants shall be strapped to the tee and shall be buttressed with concrete in accordance with standard details.
 12. All W.H.C.'s to be 1" diameter unless otherwise noted.
 13. All horizontal and vertical controls are based on Maryland State Datum.

- NOTES:**
1. Locate joints in Ex. 12"W prior to installation of the Tapping Sleeve and Valve. The T.S. & V. shall not be closer than 3'-0" to joint.
 2. The storm drainage system will be constructed prior to water and sewer mains and services.

QUANTITIES	
8" Sewer	1385 LF.
6" Water	1350 LF.
3" Water	350 LF.
Fire Hydrants	2

ALL F.H.'S ARE M.&H. TYPE

STAKEOUT & DIARY
F.B.# 5212



Kenneth A. McLeod

Artery Community
Village of Oakland Mills
Section 2 Area 4
Contract No. C-410-W&S

WHITMAN, REQUARDT & ASSOCIATES
ENGINEERS
1304 ST. PAUL ST.
BALTIMORE, MARYLAND

DEPARTMENT OF PUBLIC WORKS
HOWARD COUNTY, MARYLAND
3-24-77
W. O. Filbert
CHIEF - BUREAU OF WATER AND SEWER

CONTRACT NO. C-410 W&S

PLAN OF
WATER & SEWER MAINS

COLUMBIA
VILLAGE OF OAKLAND MILLS
ELECTION DISTRICT GUILFORD NO. 6

DRAWING NO. 1 OF 2
SCALE 1"=50'

DEC. 13, 1972 AS BUILT

WS 410-W&S/1