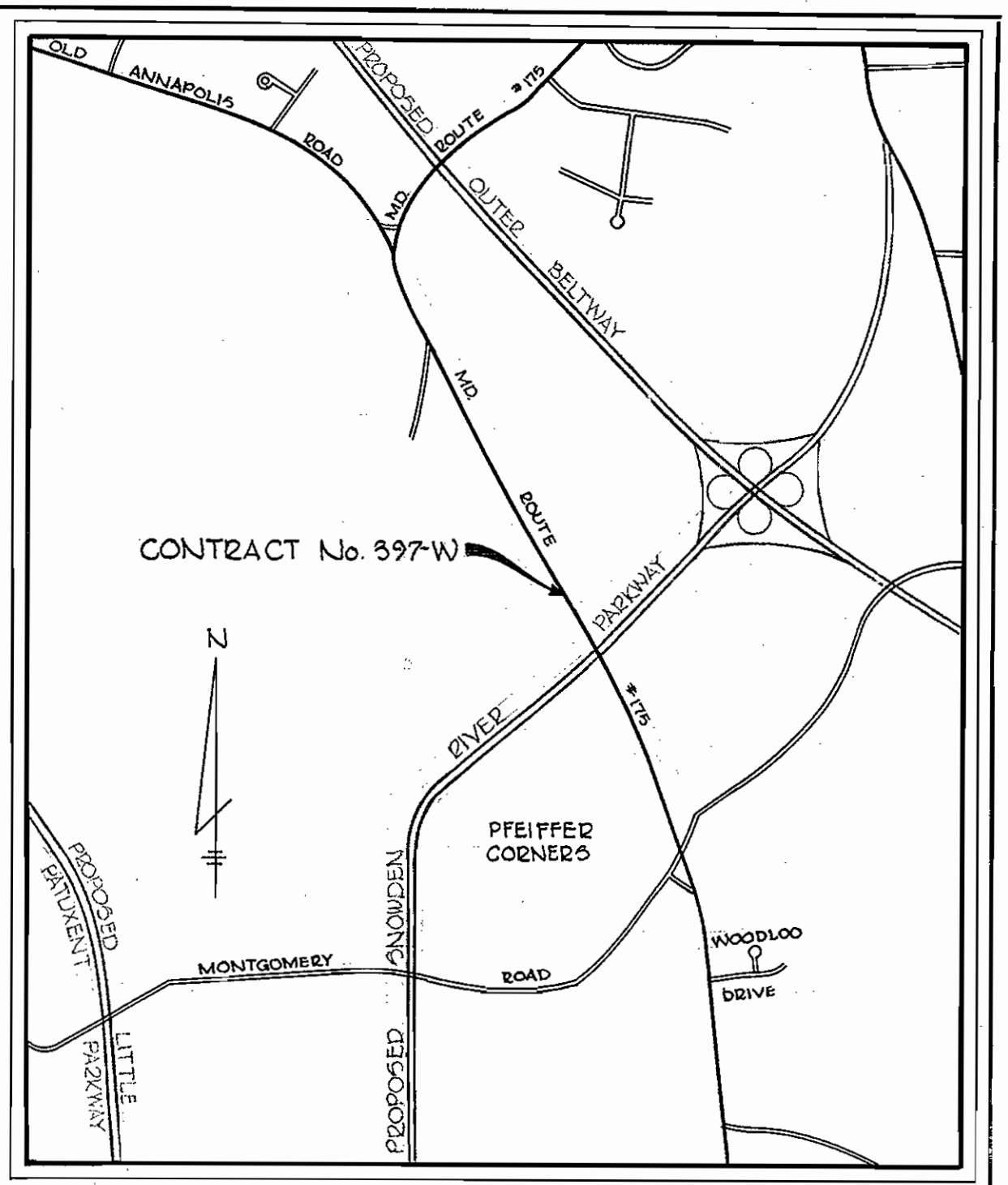
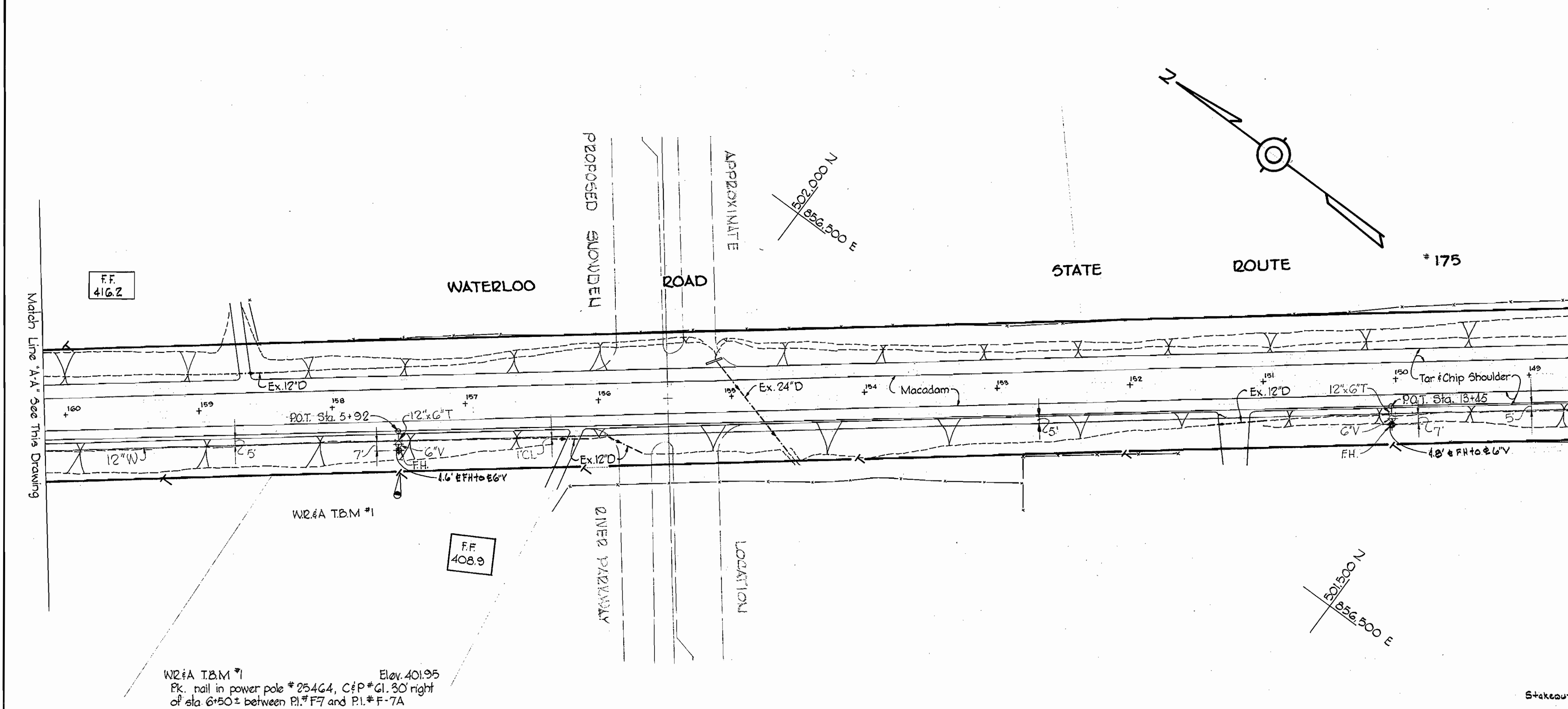
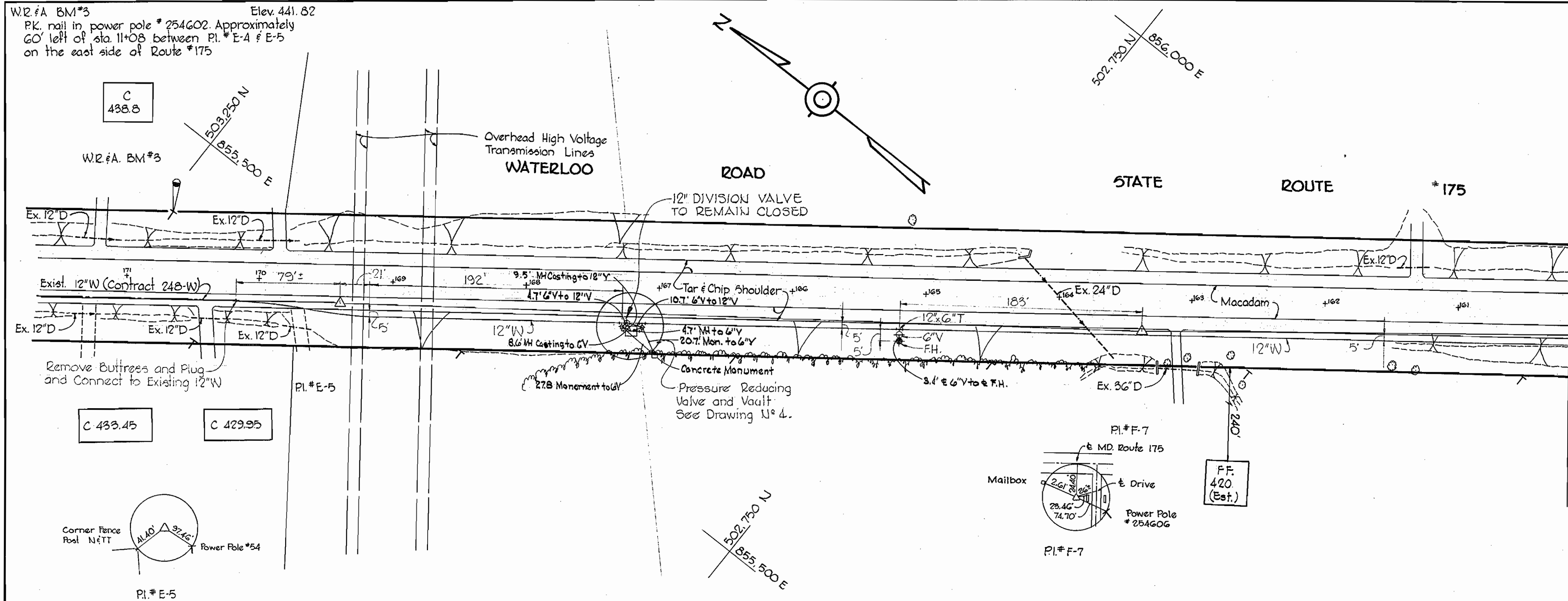


W2.4A BM#3 Elev. 441.82  
 Pk. nail in power pole #254602. Approximately  
 60' left of sta. 11+08 between Pl. #E-4 & E-5  
 on the east side of Route #175

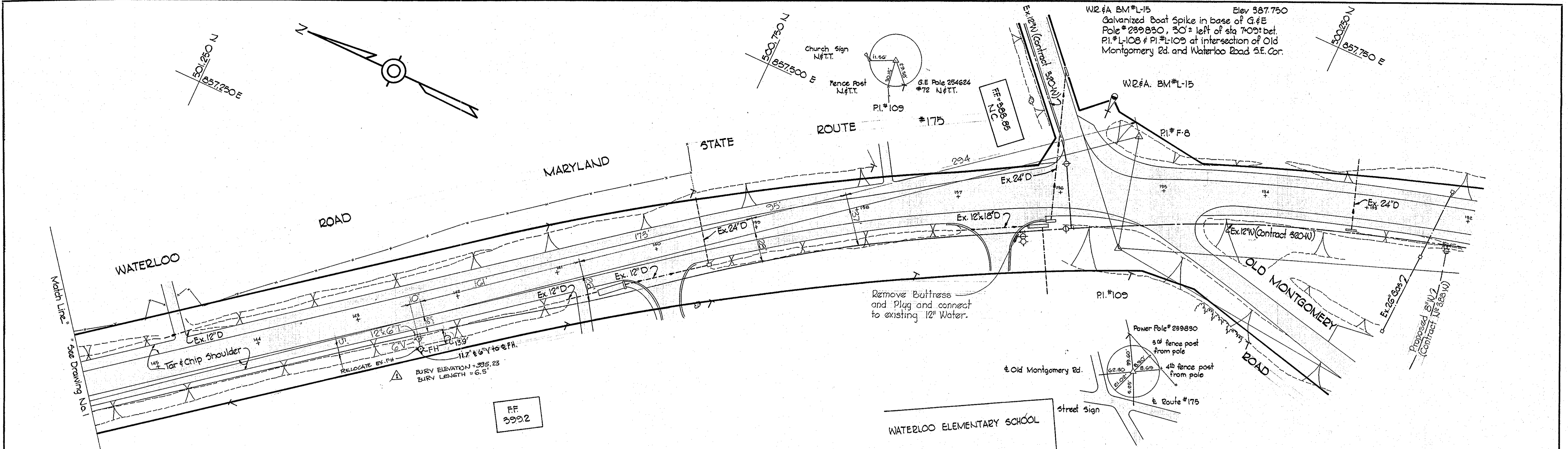


VICINITY MAP  
 Scale: 1" = 1400'

WHITMAN, REQUARDT & ASSOCIATES ENGINEERS 1304 ST. PAUL ST. BALTIMORE, MARYLAND	DEPARTMENT OF PUBLIC WORKS HOWARD COUNTY, MARYLAND DATE 11-10-70 W. O. Gilbert CHIEF-BUREAU OF WATER AND SEWER	CONTRACT NO. 397-W	PLAN OF WATER MAINS	ELECTION DISTRICTS GUILFORD NO. 6 & ELKRIDGE NO. 1	DRAWING NO. 1 OF 4 SCALE AS SHOWN FB #4584 AS BUILT AUGUST 23, 1971
---	--	--------------------	------------------------	---	--

W. O. G185-2

WS 397-W/1



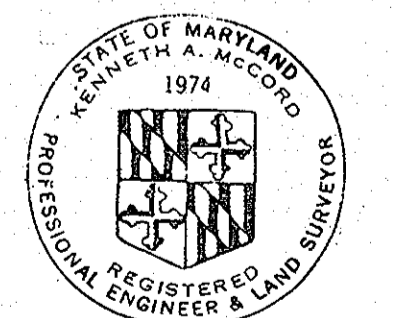
W2 #A BM#L-15 Elev 387.750  
Galvanized Boat Spike in base of G#E  
Pole # 239830, 30' ± left of sta 7+00 ± bet.  
PI # L-108 & PI # L-109 at intersection of Old  
Montgomery Rd. and Waterloo Road S.E. Cor.

Remove Buttress  
and Plug and connect  
to existing 12" Water.

**GENERAL NOTES**

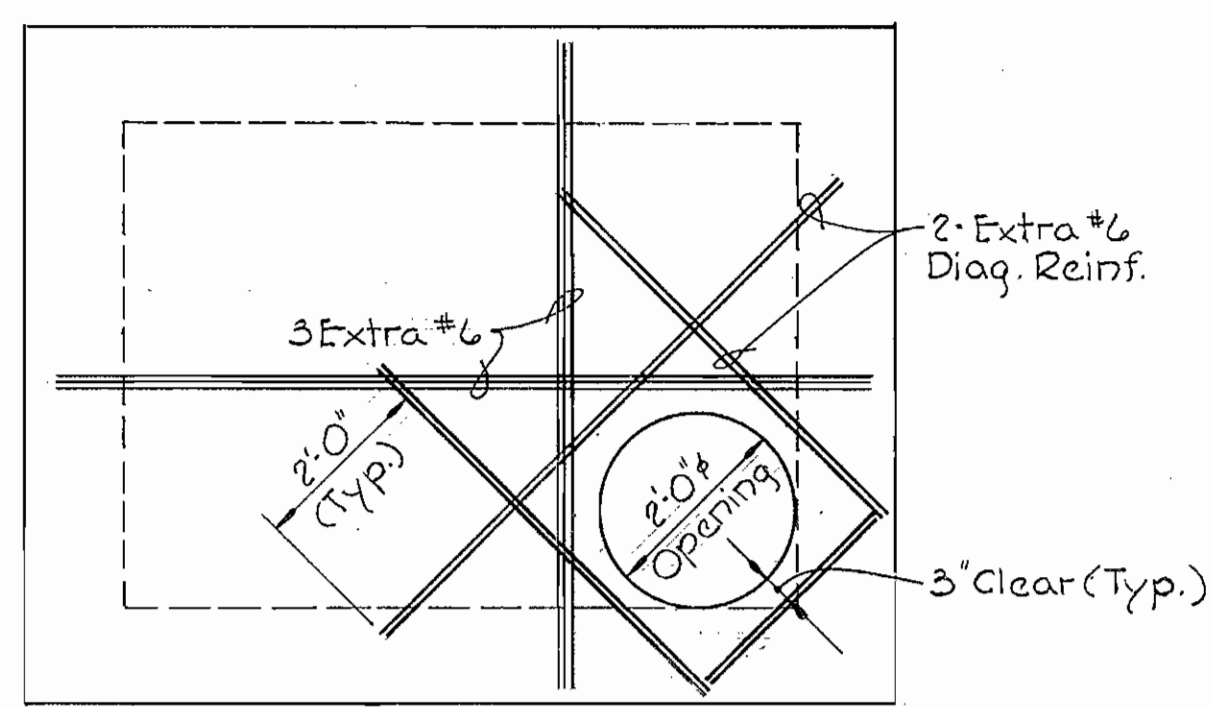
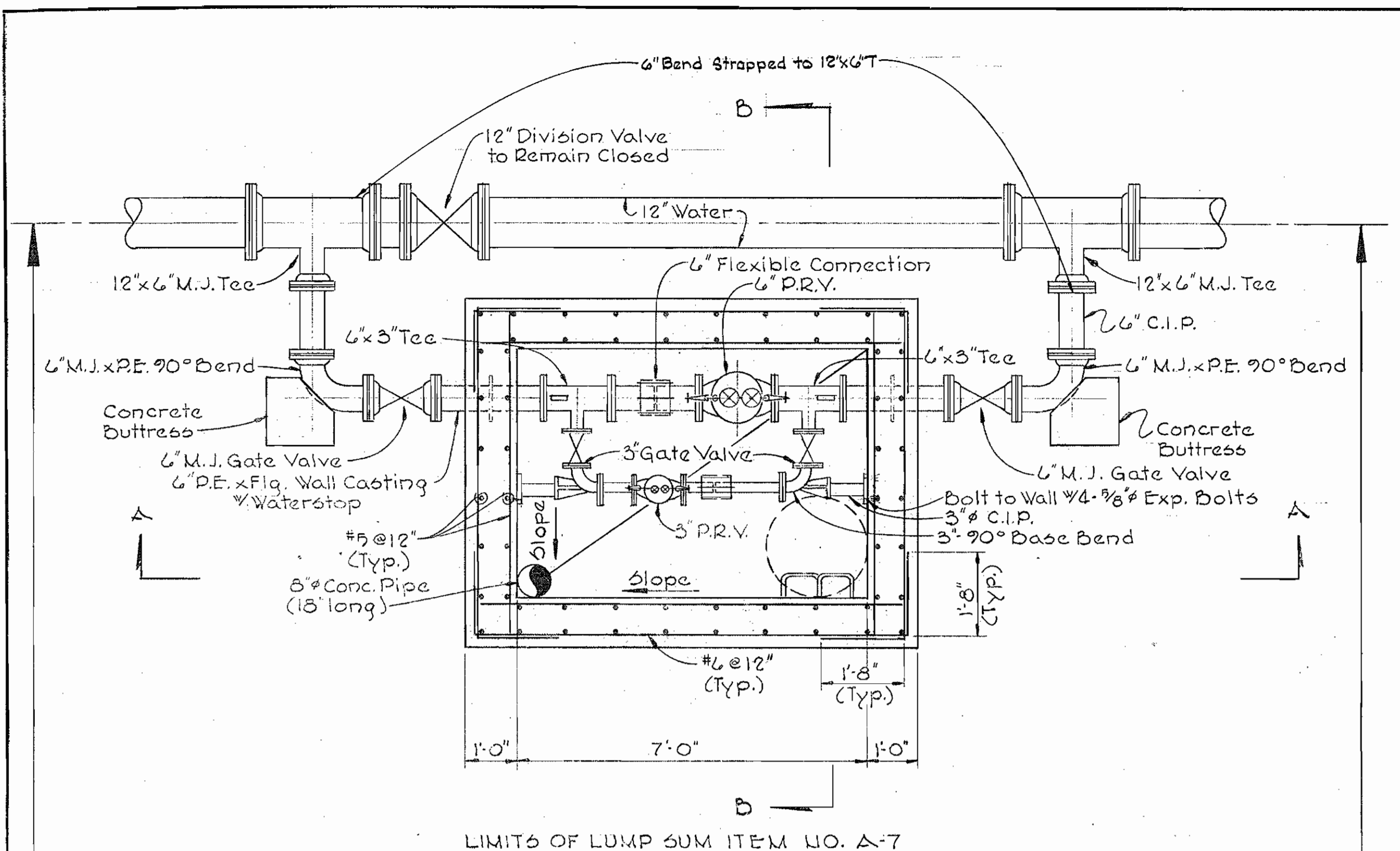
1. Approximate locations of existing mains are shown. The Contractor shall take all necessary precautions to protect existing mains and services and maintain uninterrupted supply. Any damage incurred shall be repaired immediately.
2. All pipe elevations shown are invert  $\odot$  elevations.
3. The Contractor shall locate existing utilities a minimum of two weeks in advance of construction operations in vicinity of utilities.
4. For all standard details see standards bound in specifications.
5. Block all fittings with concrete, see standard details bound in Specifications.
6. Bury Line elevations on fire Hydrants shall be set the same as top of curb, edge of paving, or as directed by the engineer in the field.
7. All fire hydrants shall be strapped to tee and buttressed with concrete in accordance with standard details.
8. Cost of strapping fire hydrants and valves to be included in the unit price bid for furnishing and installing fire hydrants.
9. All water mains shall have a minimum of 3' ± cover.
10. Clear all utilities by a minimum of 6', clear all poles by 2'-0" minimum or tunnel as required.
11. All horizontal and vertical controls are based on Maryland State Datum.

FOR REVISION 1 ONLY:



*Kenneth A. McCord*

1 RELOCATE EX. FIRE HYDRANT TO ACCOMMODATE ROAD IMPROVEMENTS 12/13/12 <b>WHITMAN, REQUARDT &amp; ASSOCIATES</b> ENGINEERS 1304 ST. PAUL ST. BALTIMORE, MARYLAND	DEPARTMENT OF PUBLIC WORKS HOWARD COUNTY, MARYLAND 11-10-70 <i>W. O. Elliott</i> CHIEF - BUREAU OF WATER AND SEWER	CONTRACT NO. 397-W	PLAN OF WATER MAINS	ELECTION DISTRICTS GUILFORD NO. 6 & ELKRIDGE NO. 1	Contract No. 397-W DRAWING NO. 2 OF 4 SCALE AS SHOWN 501-480 500-480
---	--	--------------------	------------------------	---	--



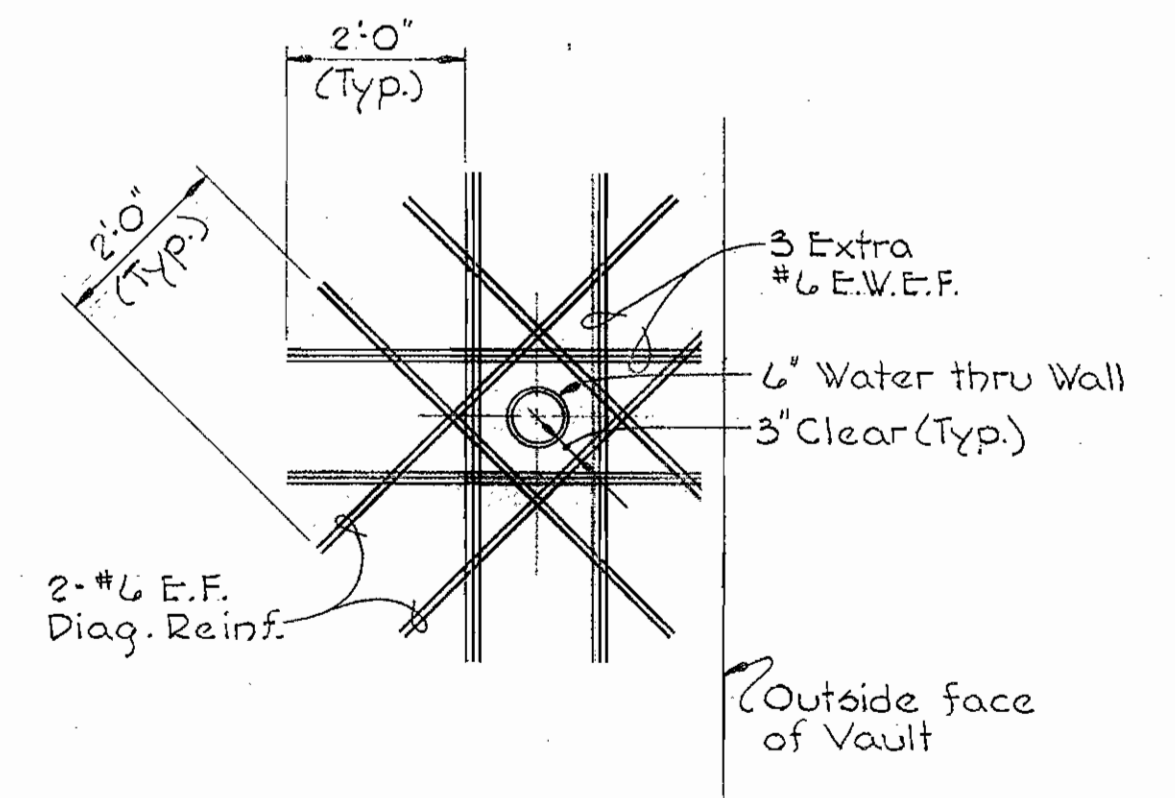
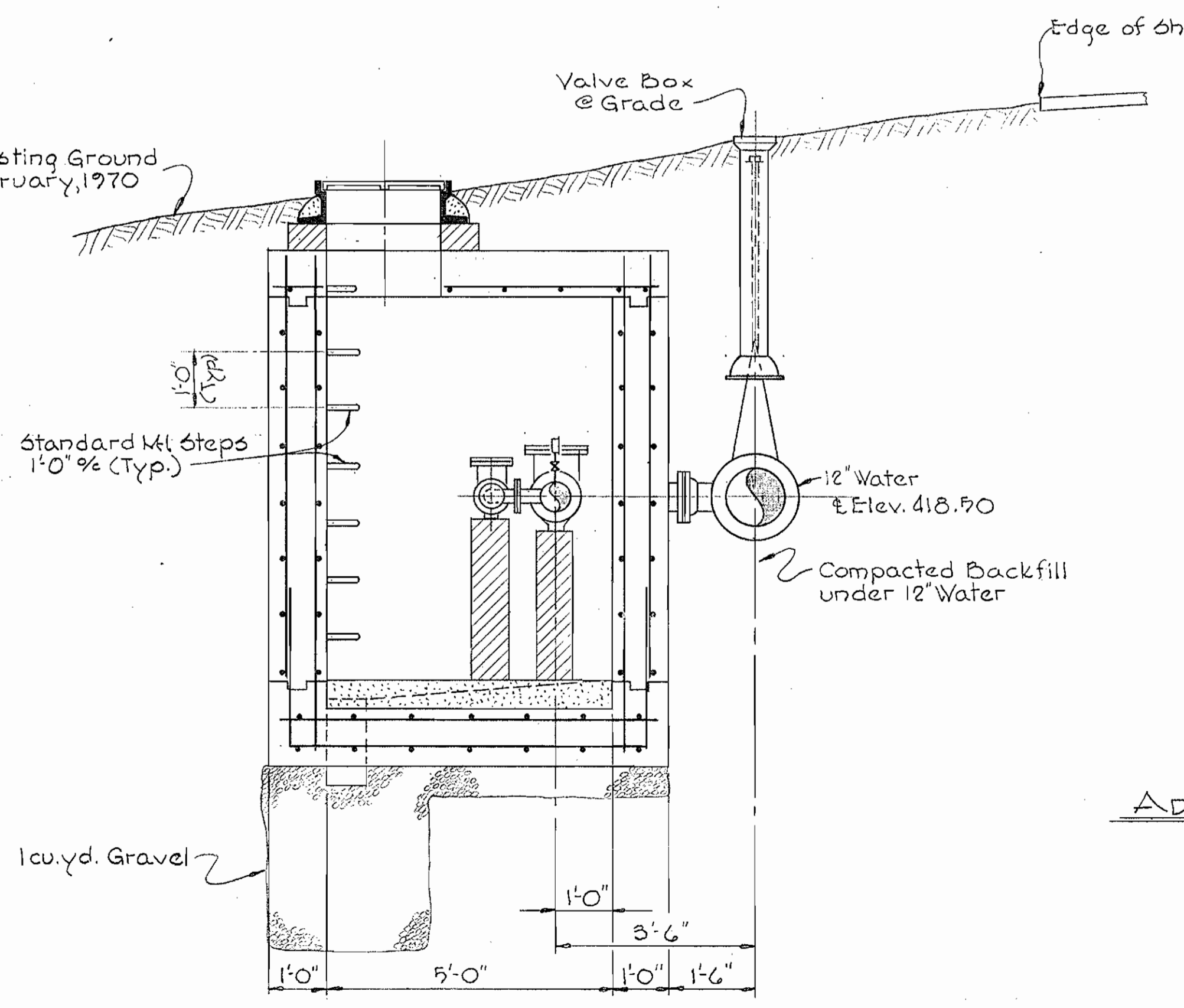
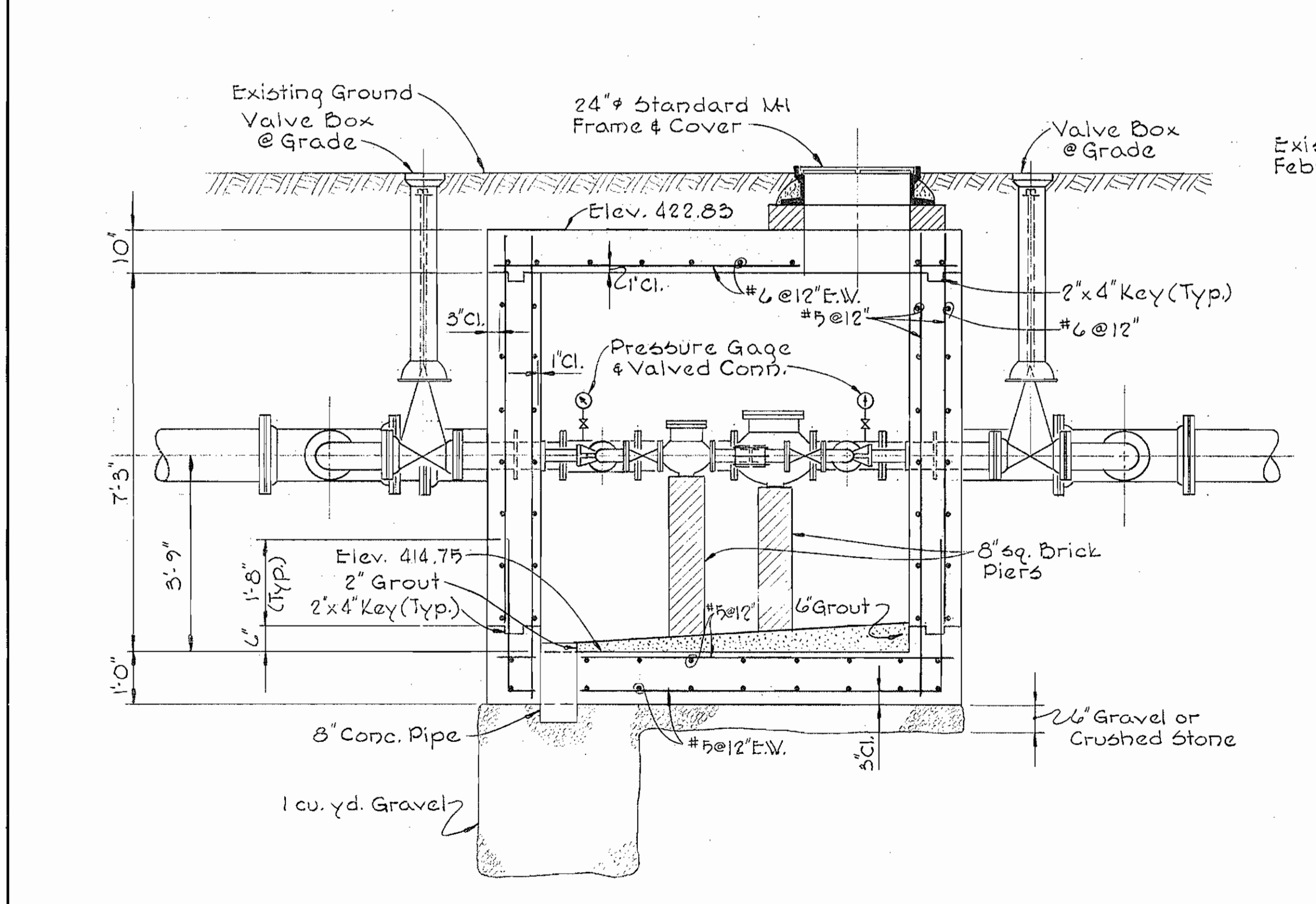
**PLAN - 6" PRESSURE REDUCING VALVE VAULT**  
Scale: 1/2"=1'-0"

Concrete Notes:

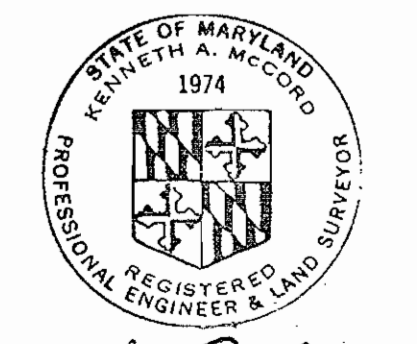
1. All concrete shall be Class A.
2. Reinforcing steel shall conform to A.S.T.M. A-615-70 Grade 40.
3. Reinforcing bar laps and dowel projections shall be 30 bar diameters unless otherwise noted.
4. All exposed concrete edges shall be chamfered 3/4".

General Notes:

1. All exposed steel shall be painted with 2 coats Mobile Asphalt 35-J-11 or approved equal.
2. 6" x 3" Pressure Reducing valves shall be furnished by Howard County and installed by the Contractor.



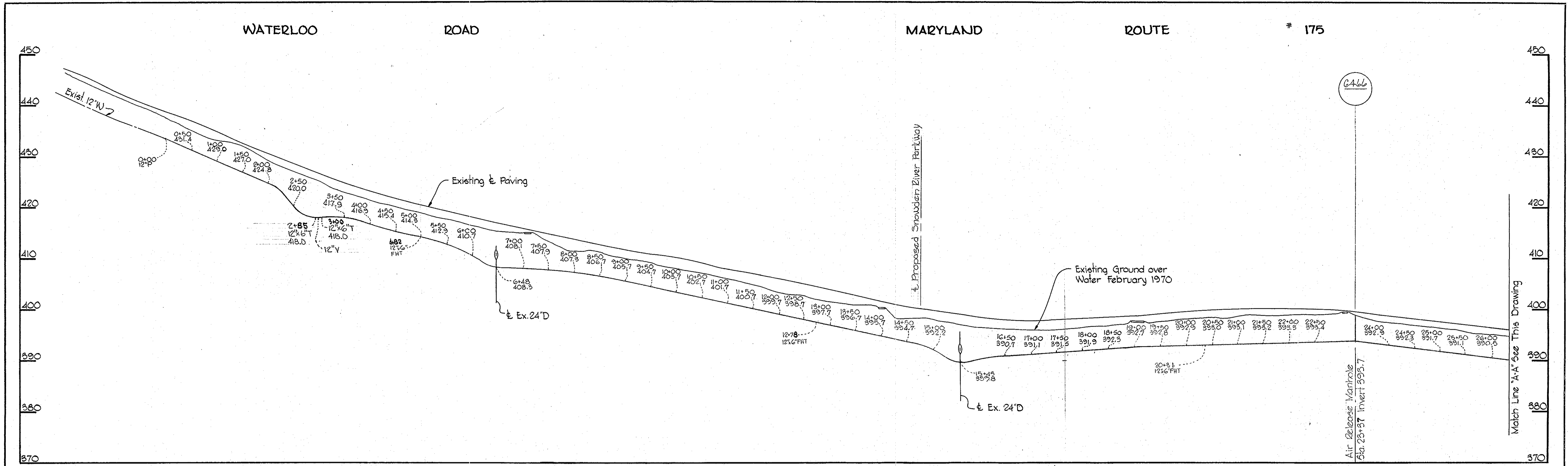
**ADDITIONAL REINFORCING AROUND 6" PIPE THRU WALL**  
Scale: 1/2"=1'-0"



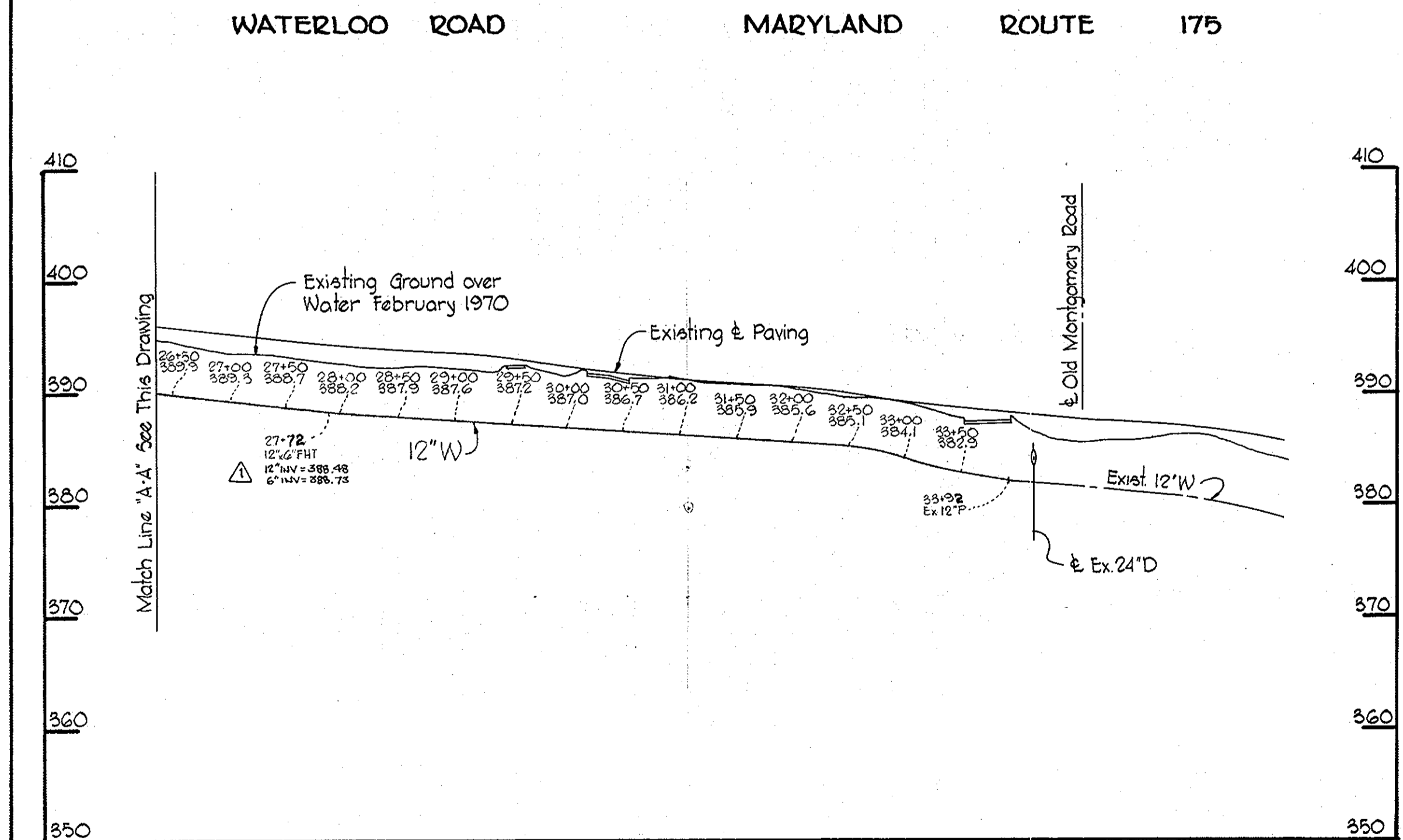
*Kenneth A. McCord*

WHITMAN, REQUARDT & ASSOCIATES ENGINEERS 1304 ST. PAUL ST. BALTIMORE, MARYLAND	DEPARTMENT OF PUBLIC WORKS HOWARD COUNTY, MARYLAND 11-10-70 DATE <i>W.O. Pilbert</i> CHIEF - BUREAU OF WATER AND SEWER	CONTRACT NO. 397-W	DETAILS OF WATER MAINS	ELECTION DISTRICTS GUILFORD NO. 6 & ELKDRIDGE NO. 1	DRAWING NO. 4 OF 4 SCALE AS SHOWN
---	---	--------------------	---------------------------	--	--------------------------------------

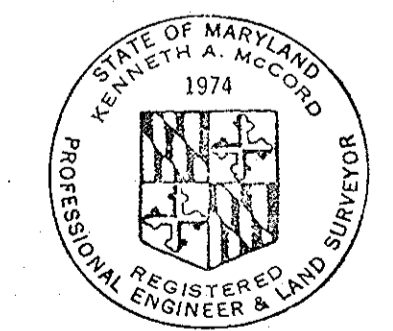
WS 397-W/4



All Pipe Cast Iron



FOR REVISION 1 ONLY:



*Kenneth A. McLeod*

1	RELOCATE EX. FIRE HYDRANT TO ACCOMMODATE ROAD IMPROVEMENTS	12/18/70	DEPARTMENT OF PUBLIC WORKS HOWARD COUNTY, MARYLAND 11-10-70 W. O. Albert CHIEF-BUREAU OF WATER AND SEWER	CONTRACT NO. 397-W	PROFILES OF WATER MAINS	ELECTION DISTRICTS GUILFORD NO. 6 & ELKRIDGE NO. 1	DRAWING NO. 3 OF 4	SCALE H:1"=100' V:1"=10'
---	--	----------	--	--------------------	----------------------------	---	--------------------------	--------------------------------

Contract No. 397-W