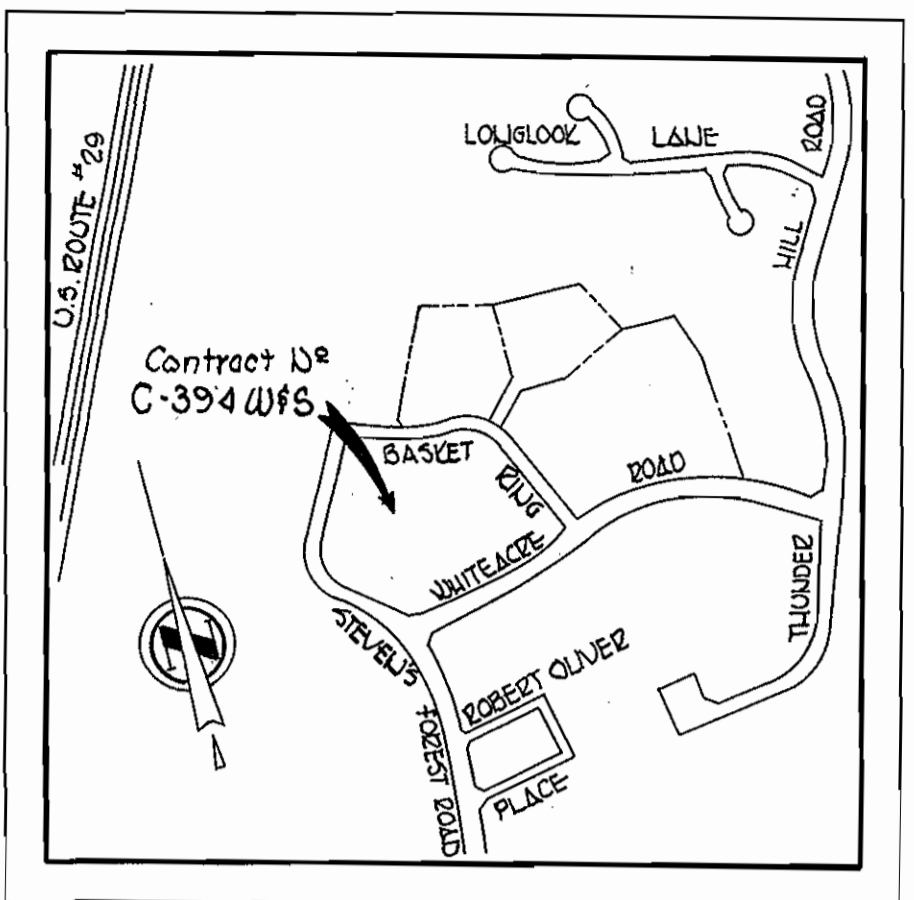


QUANTITIES	
8" Sewer	1,150'
6" Water	1,100'
Fire Hydrants	3

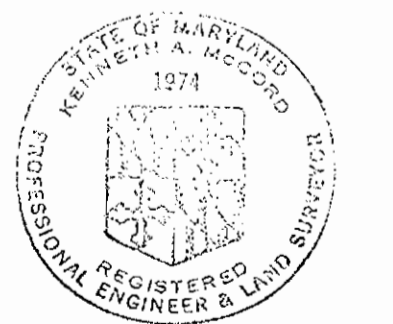


VICINITY MAP  
Scale: 1"=800'

GENERAL NOTES

1. Approximate location of existing mains are shown. The Contractor shall take all necessary precautions to protect existing mains and services and maintain uninterrupted supply. Any damage incurred shall be repaired immediately.
2. All pipe elevations shown are invert elevations.
3. The Contractor shall locate existing utilities a minimum of two weeks in advance of construction operations in vicinity of utilities.
4. For all standard details see standards bound in Specifications.
5. All water mains shall have a minimum of 3' cover.
6. Block all fittings with concrete, see standards bound in Specifications.
7. Bury Line elevations on Fire Hydrants shall be set to the elevations shown on the drawing.
8. All Fire Hydrants shall be strapped to the tee and shall be bolted with concrete in accordance with Standard Details.
9. Clear all utilities by a minimum of 6', clear all poles by 20' minimum or tunnel as required.
10. The Contractor shall provide a joint in all sewer mains within 20' of exterior manhole walls.
11. All sewer pipe shall be V.C.P.X., C.S.P.X. or A.C.P. Class 2400 unless otherwise noted.
12. All horizontal and vertical controls are based on Maryland State Datum.

Diary/Sheetout EB # 4963  
Sewer: 8" A.C.P. Class 2400  
Water: Cast Iron

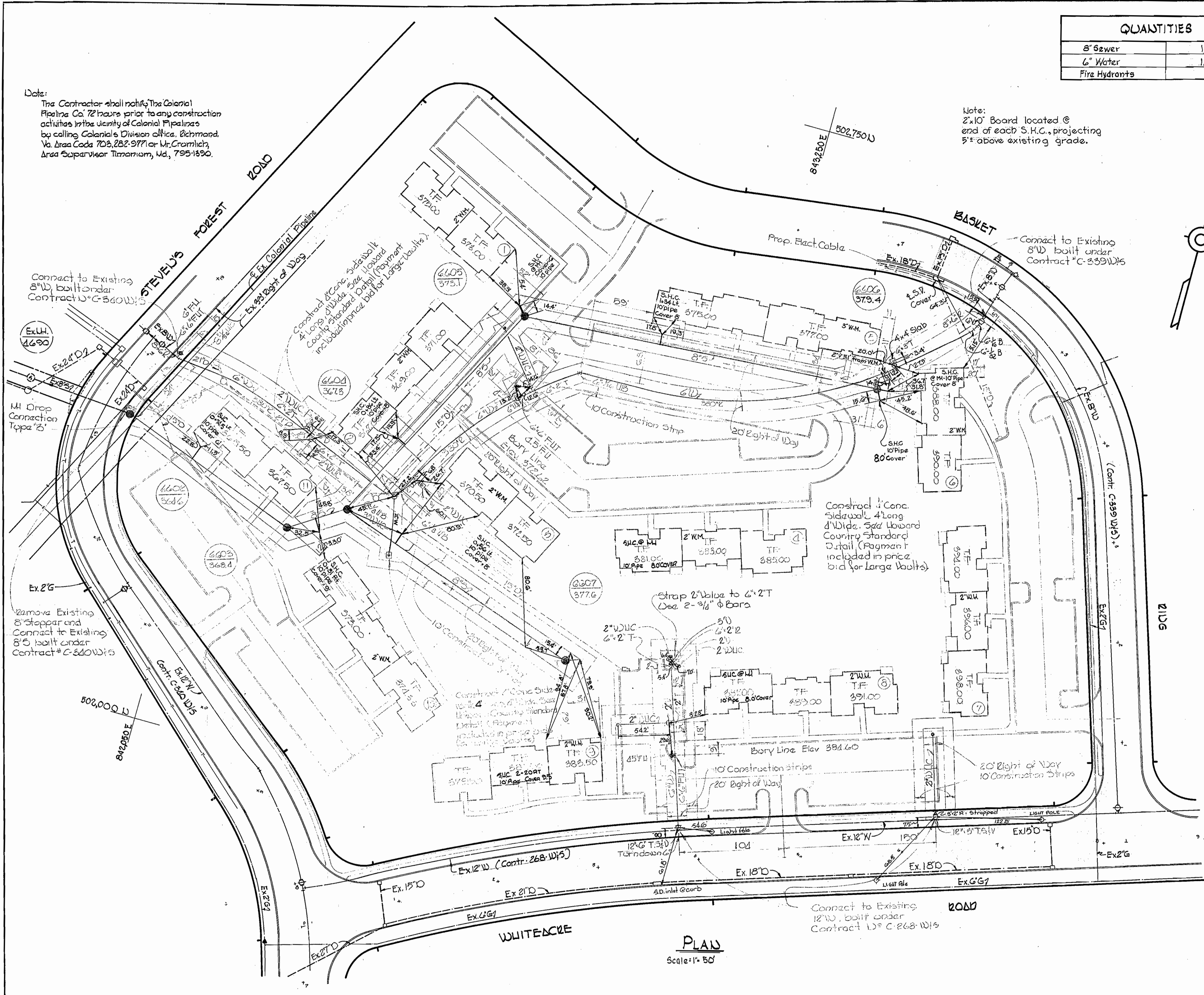


*Kenneth A. Wood*

Basket and Apartments  
Village of Oakland Mills  
Parcel 1E, Section 4, Area 1  
Contract No. C-394-W/S

DRAWING NO. 1 OF 2	SCALE AS SHOWN	501-482 502-482 503-482
--------------------	----------------	-------------------------------

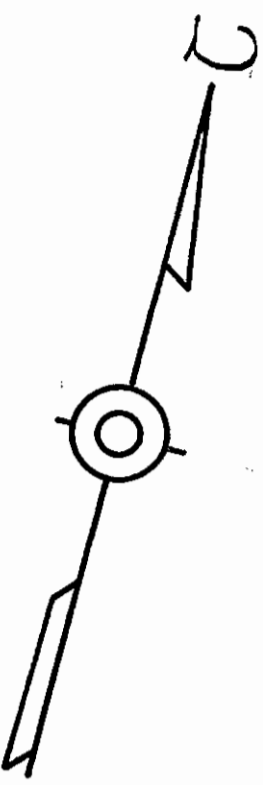
BUILT OCTOBER 25, 1971



PLAN  
Scale: 1"=50'

Note:  
The Contractor shall notify The Colonial Pipeline Co. 72 hours prior to any construction activities in the vicinity of Colonial Pipelines by calling Colonial's Division Office, Richmond, Va. Area Code 703, 282-9771 or Mr. Cromlich, Area Supervisor Timonium, Md., 795-1850.

Note:  
2x10" Board located @ end of each S.H.C., projecting 5" above existing grade.



WHITMAN, REQUARDT & ASSOCIATES  
ENGINEERS  
1304 ST. PAUL ST.  
BALTIMORE, MARYLAND

DEPARTMENT OF PUBLIC WORKS  
HOWARD COUNTY, MARYLAND  
1-26-70  
DATE

*W. O. Fulbert*  
CHIEF - BUREAU OF WATER AND SEWER

CONTRACT NO. C-394-W/S

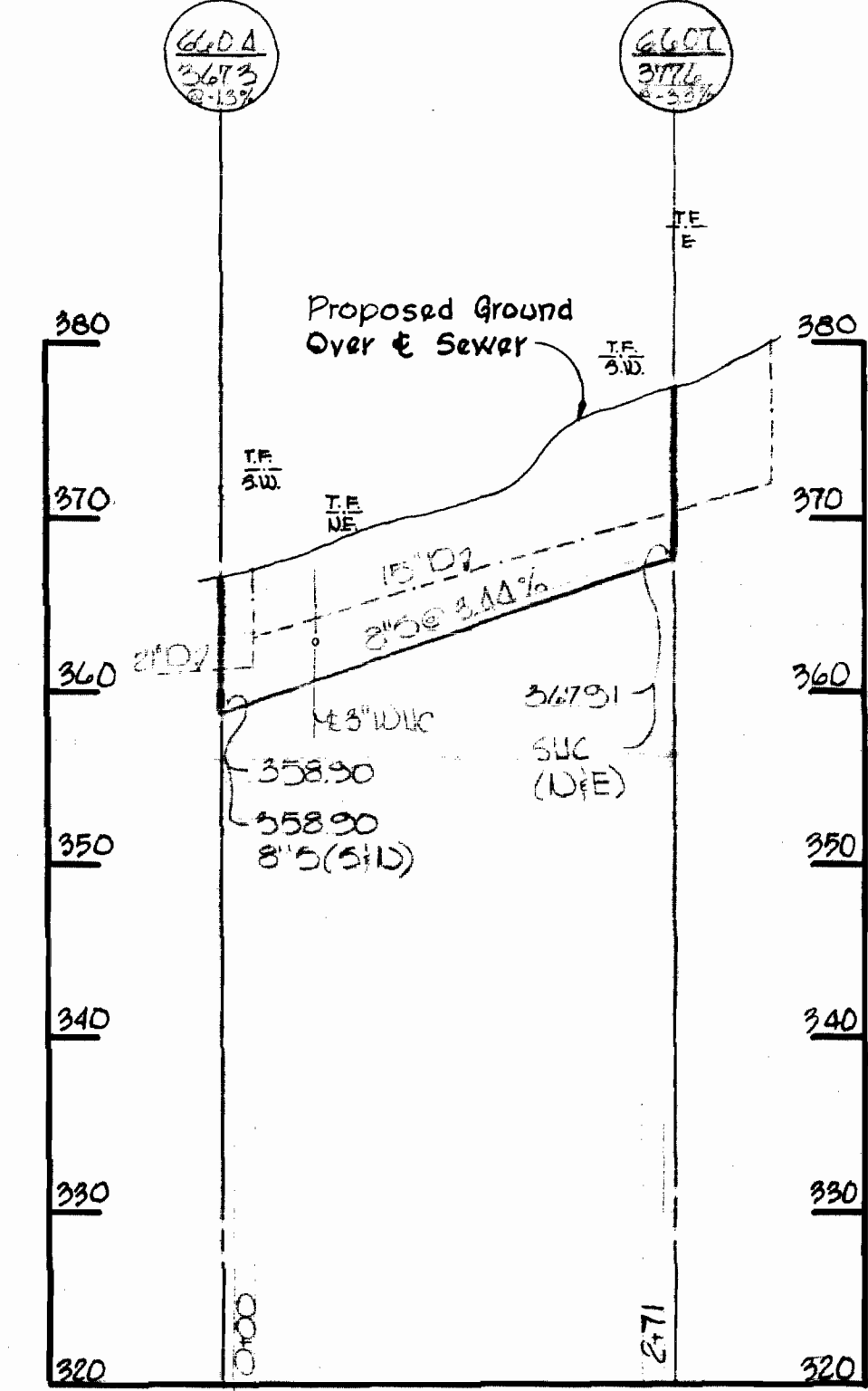
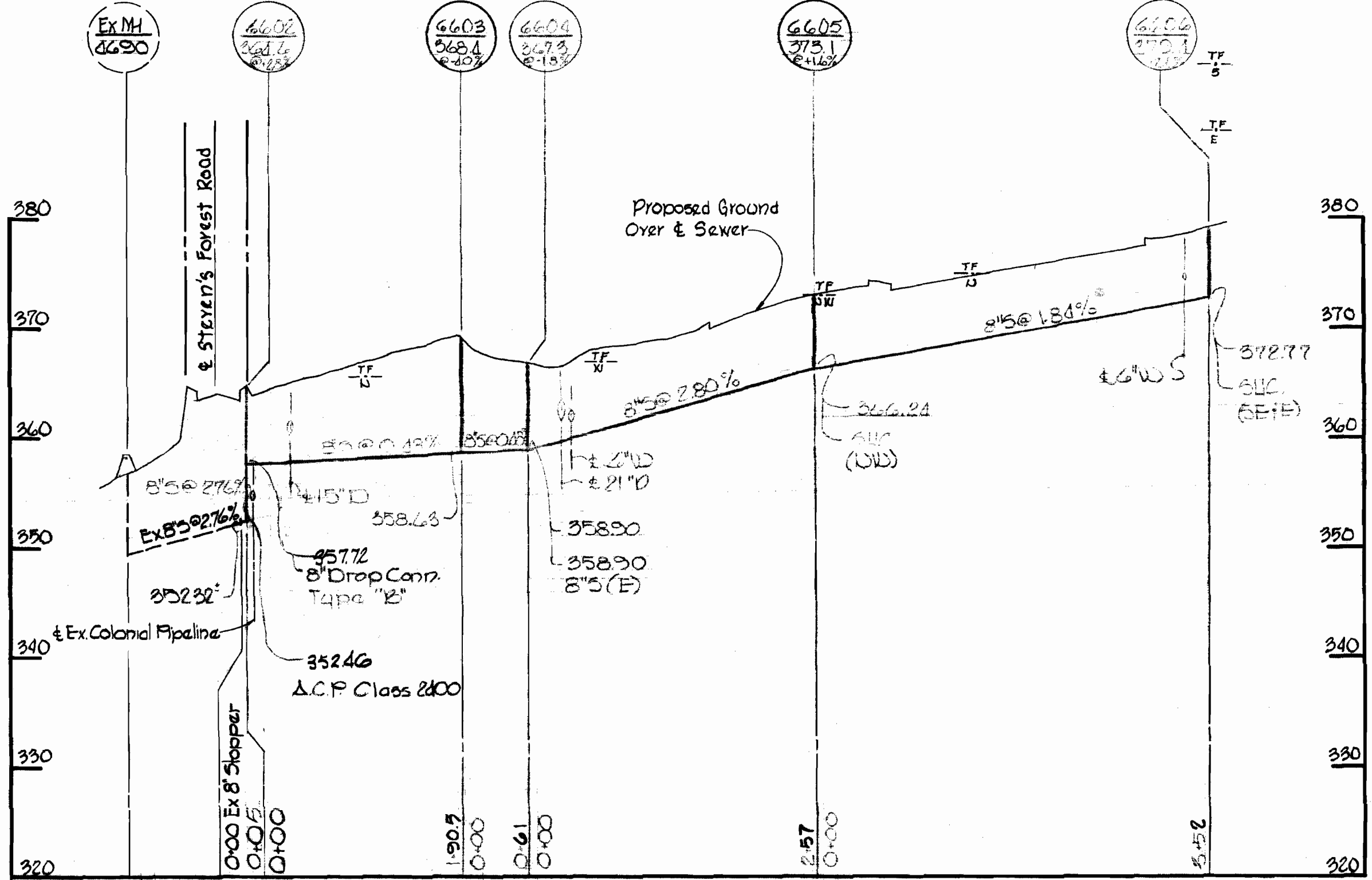
PLAN OF  
WATER & SEWER MAINS

COLUMBIA  
VILLAGE OF OAKLAND MILLS  
ELECTION DISTRICT GUILFORD NO. 6

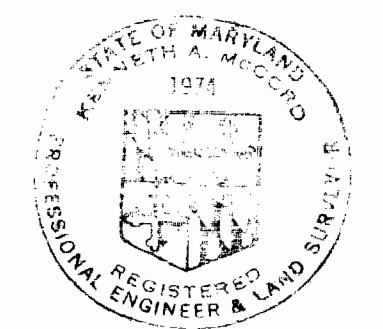
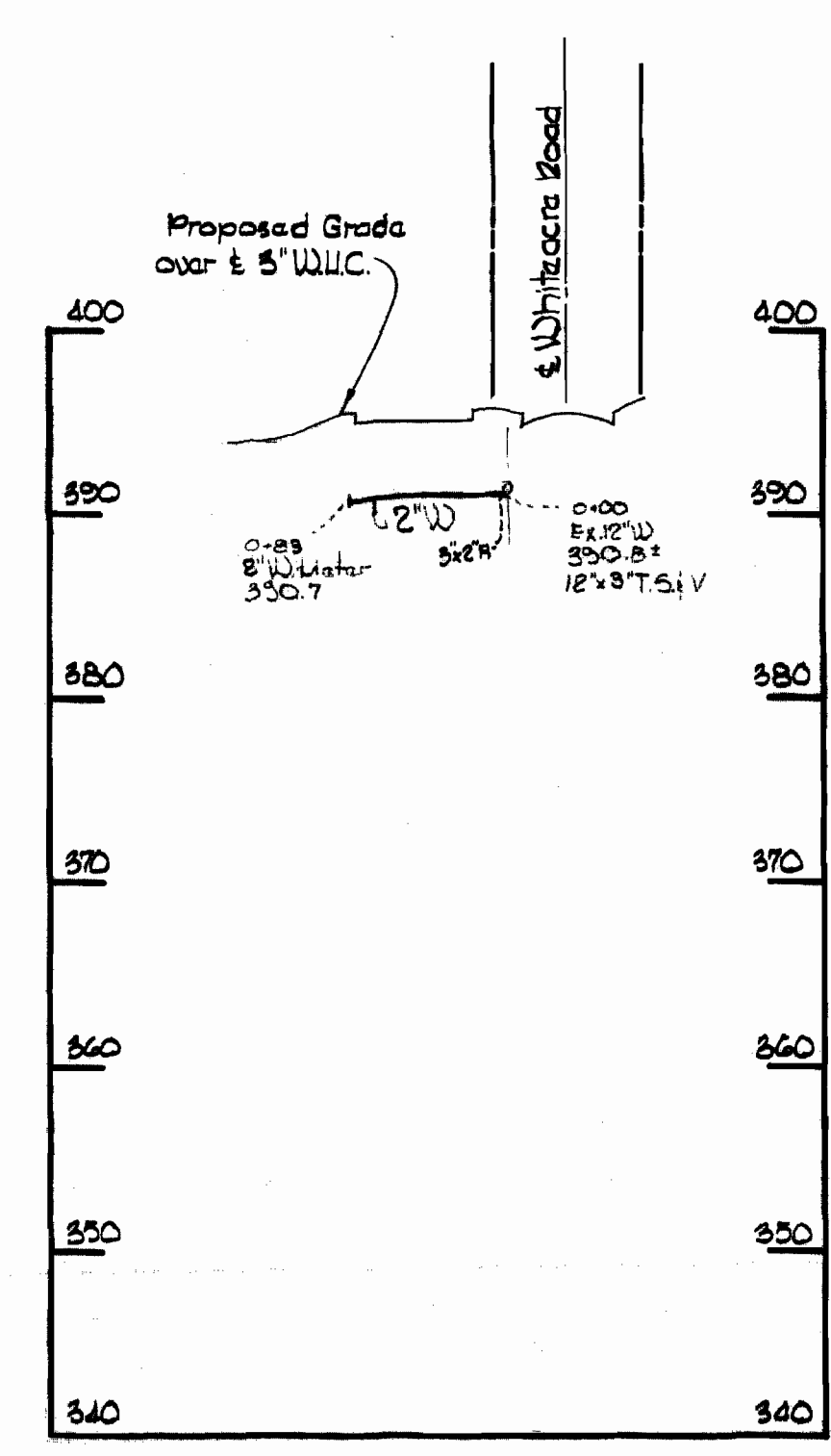
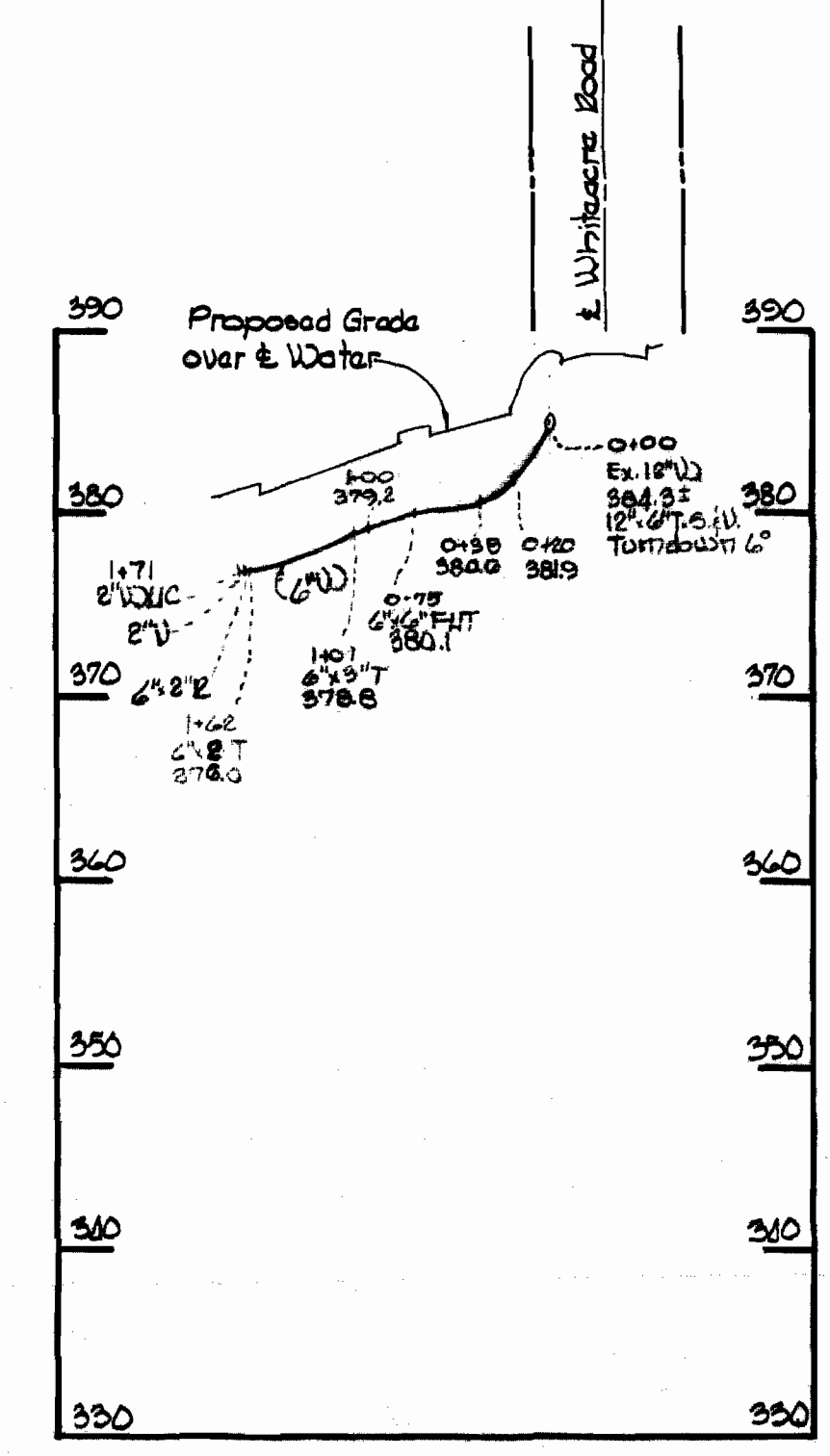
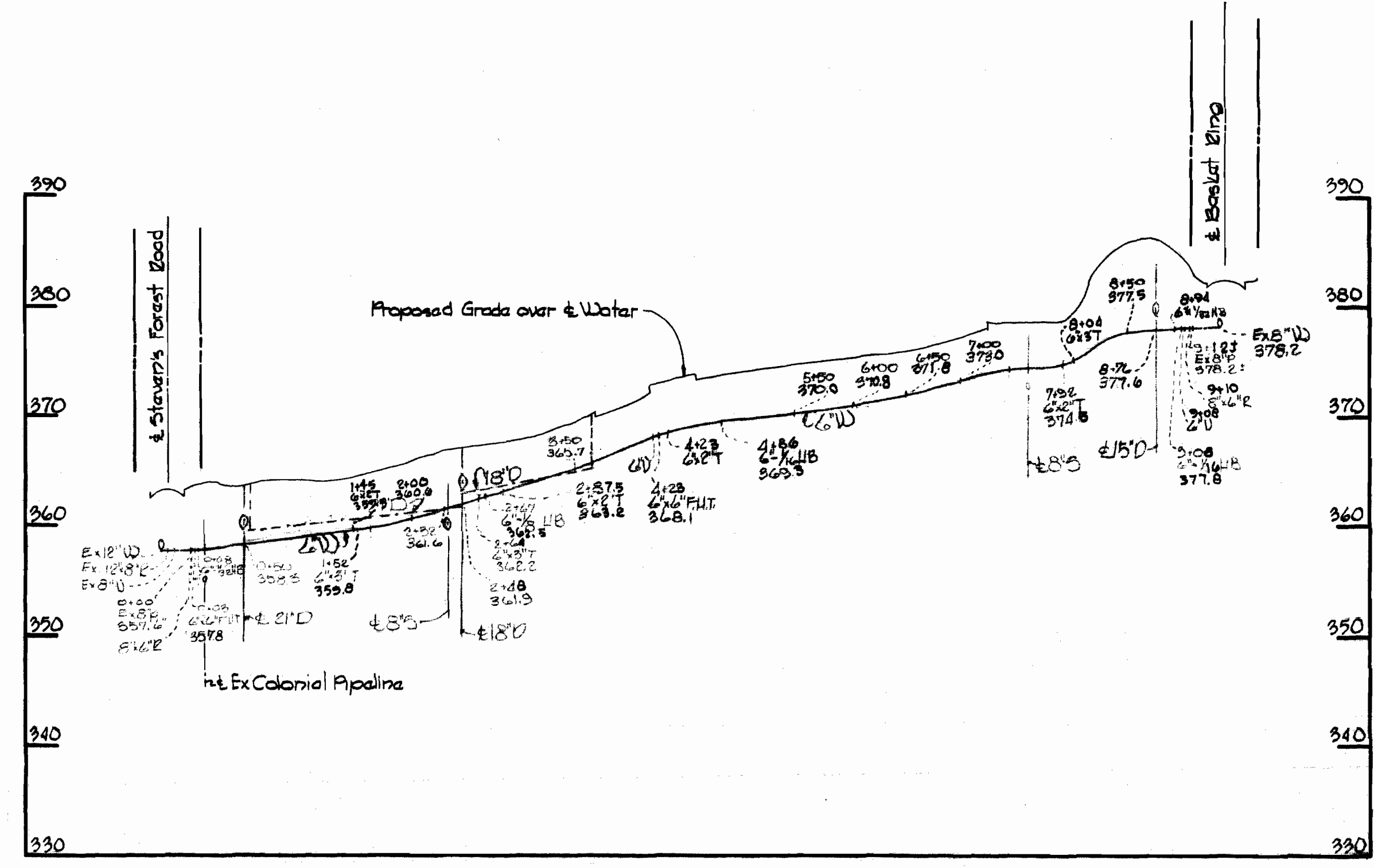
W. O. 6025-2

WS 394-W&S/1





All Water: Cast Iron  
All Sewer: Class 24 ACP



*Herbert M. ...*

Basket King Apartments  
Village of Oakland Mills  
Parcel "E" Section 4 Area 1  
Contract C-394 WBS

WHITMAN, REQUARDT & ASSOCIATES ENGINEERS 1304 ST. PAUL ST. BALTIMORE, MARYLAND	DEPARTMENT OF PUBLIC WORKS HOWARD COUNTY, MARYLAND 1-26-70 DATE W. O. Fellert CHIEF-BUREAU OF WATER AND SEWER	CONTRACT NO. C-394 WBS	PROFILE OF WATER & SEWER MAINS	COLUMBIA VILLAGE OF OAKLAND MILLS ELECTION DISTRICT GUILFORD NO. 6	DRAWING NO. 2 OF 2	SCALE H <sup>1</sup> / <sub>4</sub> "=100' V <sup>1</sup> / <sub>8</sub> "=10'
-----------------------------------------------------------------------------------------	------------------------------------------------------------------------------------------------------------------------------	------------------------	-----------------------------------	--------------------------------------------------------------------------	--------------------------	--------------------------------------------------------------------------------------

WS 394-W & S/2