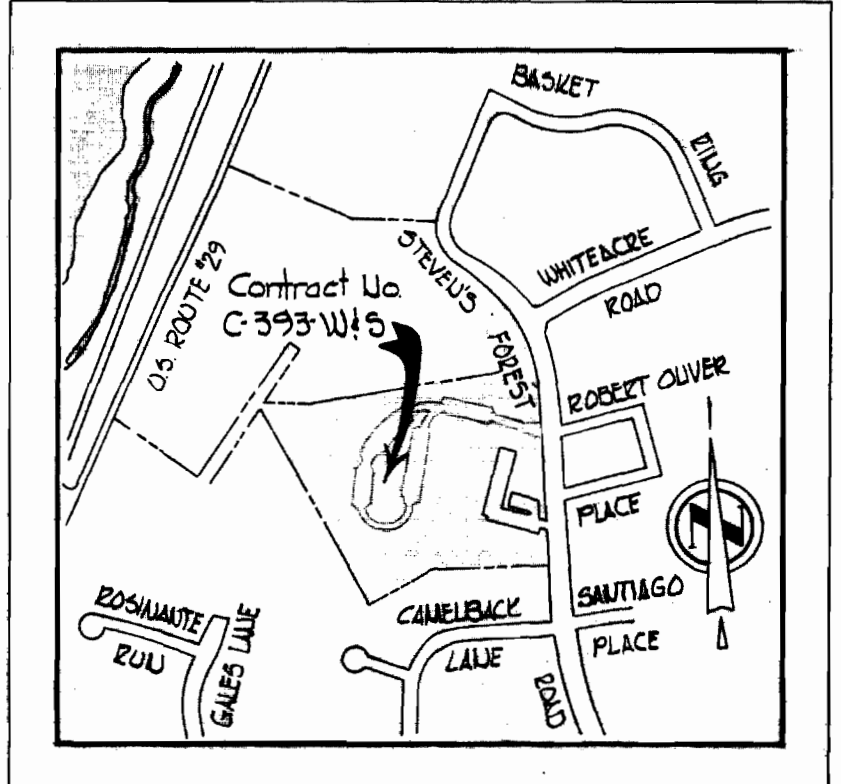


GENERAL NOTES

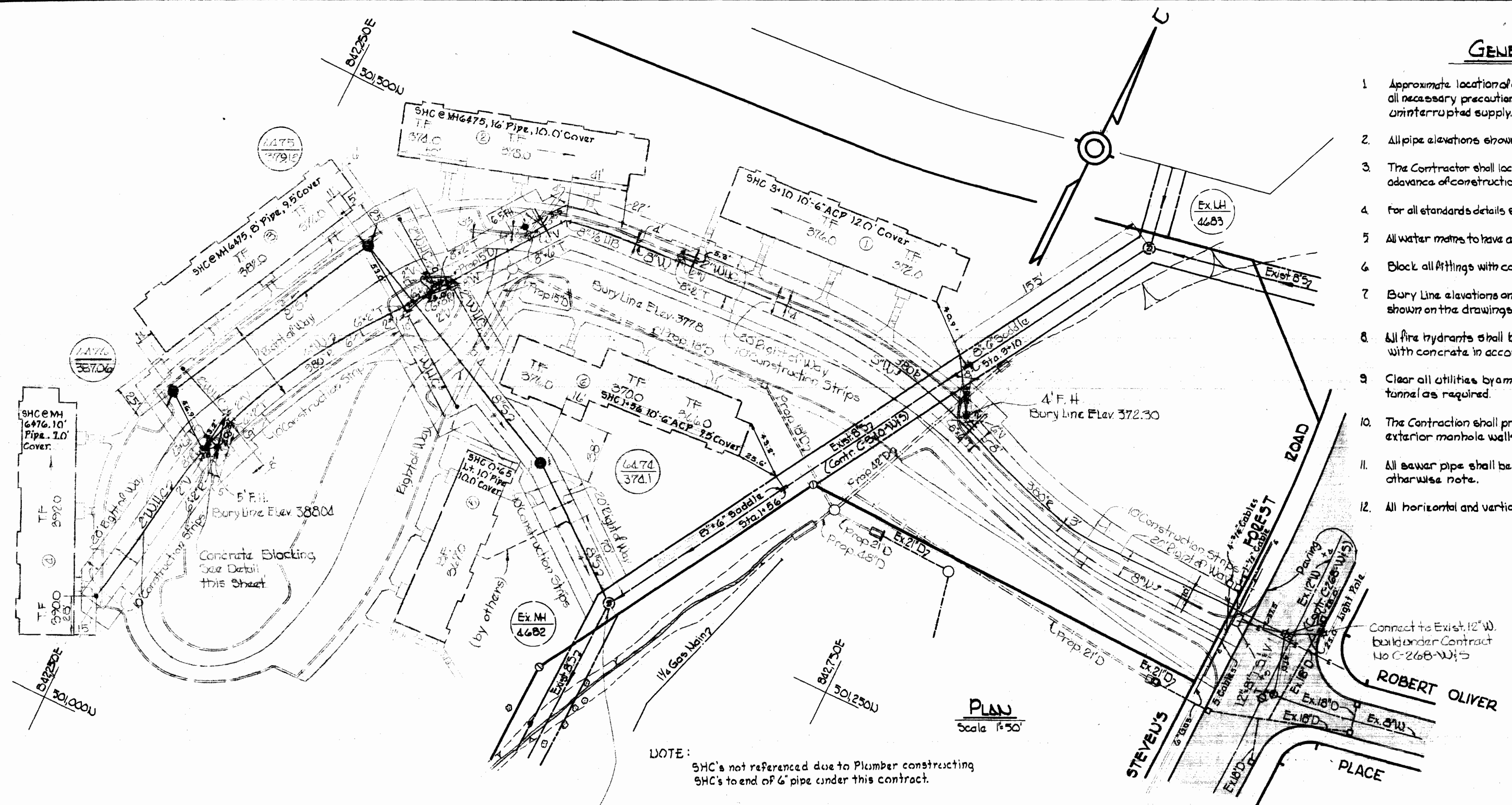
1. Approximate location of existing mains are shown. The Contractor shall take all necessary precautions to protect existing mains and services and maintain uninterrupted supply. Any damage incurred shall be repaired immediately.
2. All pipe elevations shown are invert elevations.
3. The Contractor shall locate existing utilities a minimum of two weeks in advance of construction operations in vicinity of utilities.
4. For all standards details standards bound in Specifications.
5. All water mains to have a minimum of 3' cover.
6. Block all fittings with concrete, see standard bound in Specifications.
7. Bury Line elevations on fire hydrants shall be set to the elevations shown on the drawings.
8. All fire hydrants shall be strapped to the tee and shall be buttressed with concrete in accordance with Standard Details.
9. Clear all utilities by a minimum of 6'; Clear all poles 20' minimum, or taller as required.
10. The Contractor shall provide a joint in all sewer mains within 2'-0" of exterior manhole walls.
11. All sewer pipe shall be V.C.P.X., C.S.P.X., or A.C.P. class 2400 unless otherwise note.
12. All horizontal and vertical controls are based on Maryland State Datum.



VICINITY MAP

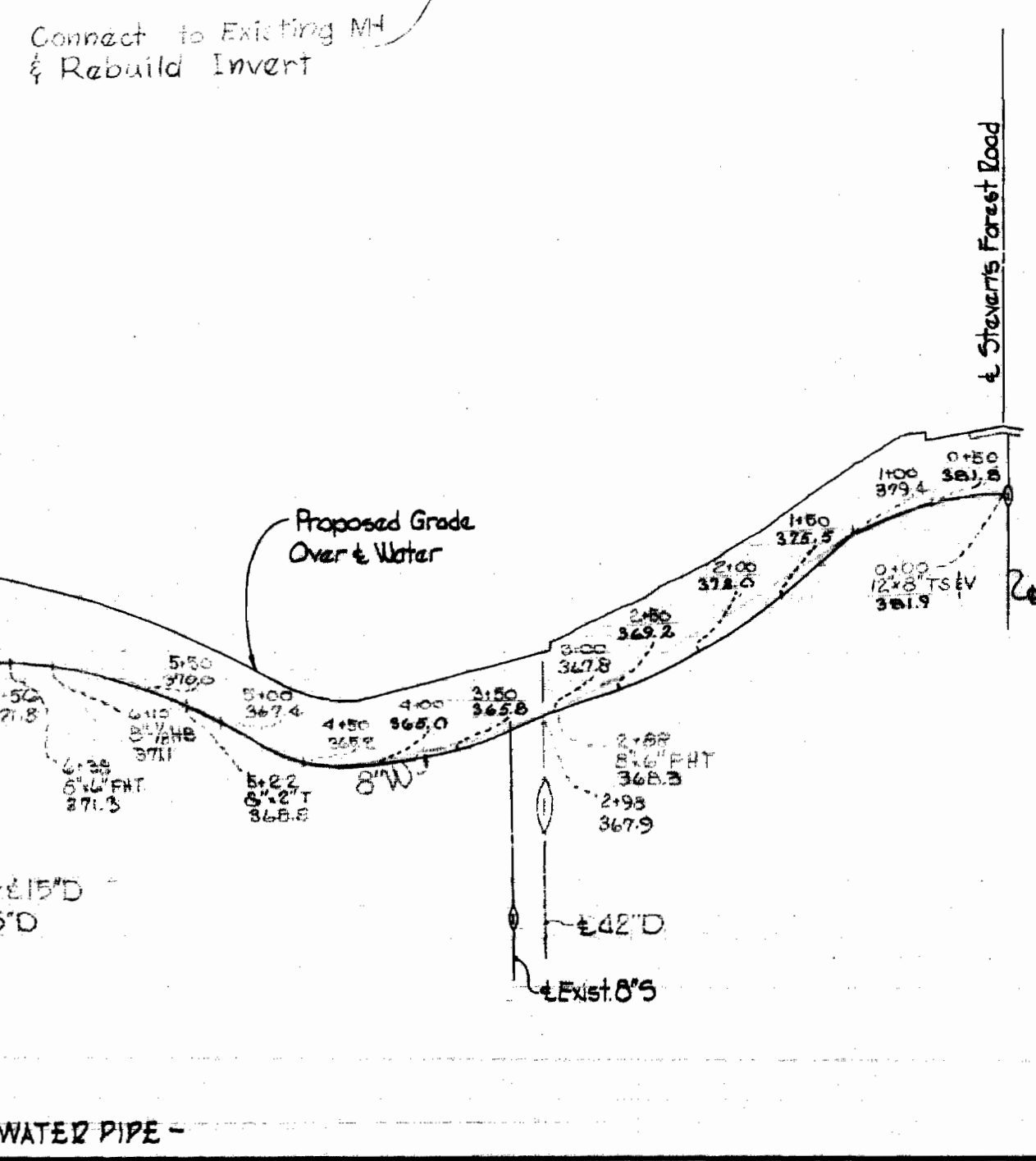
Scale: 1"=800'

QUANTITIES	
8" Sewer	490'
8" Water	720'
6" Water	220'
Fire Hydrants	3

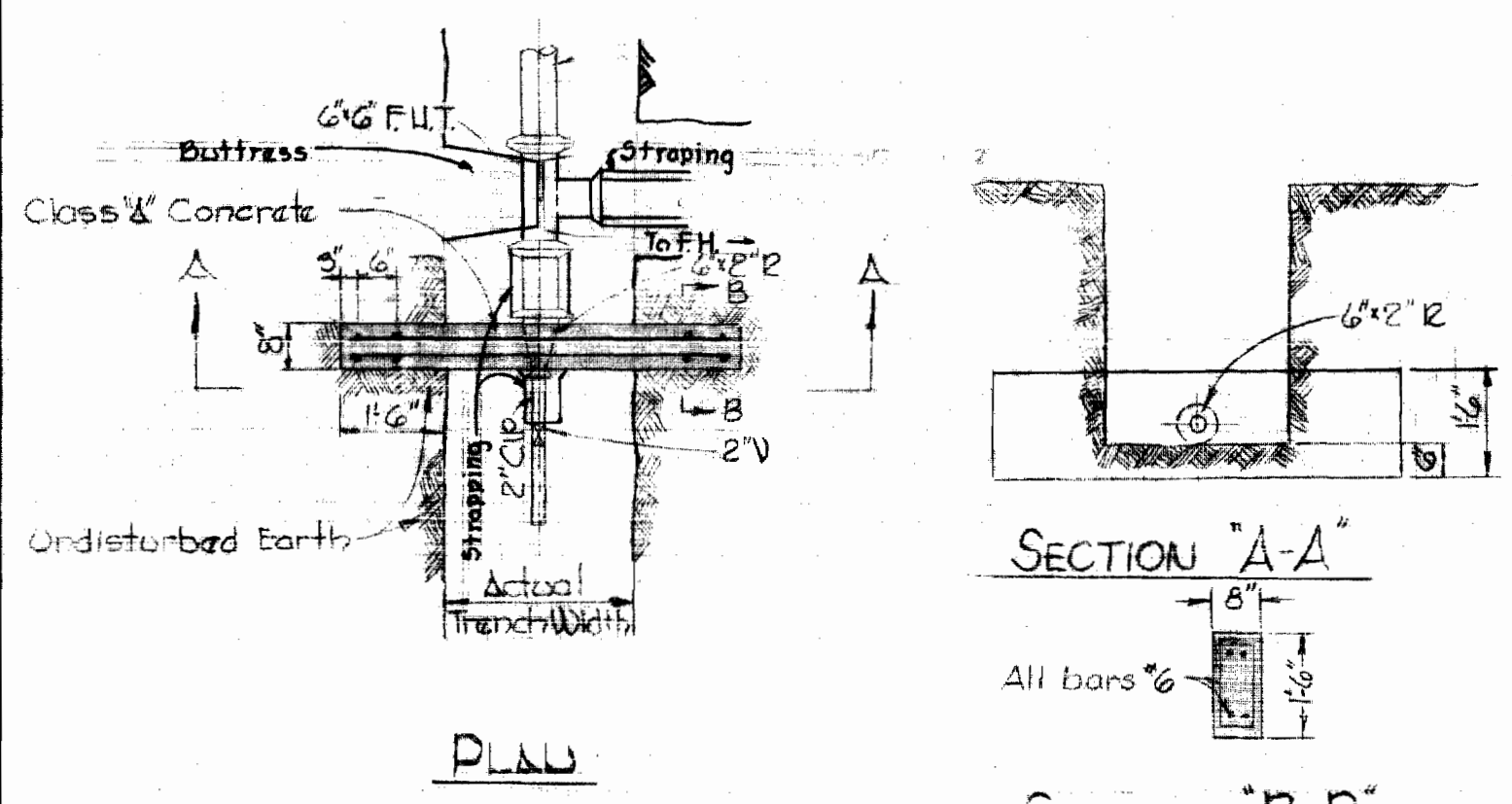


PLAN
Scale: 1"=50'

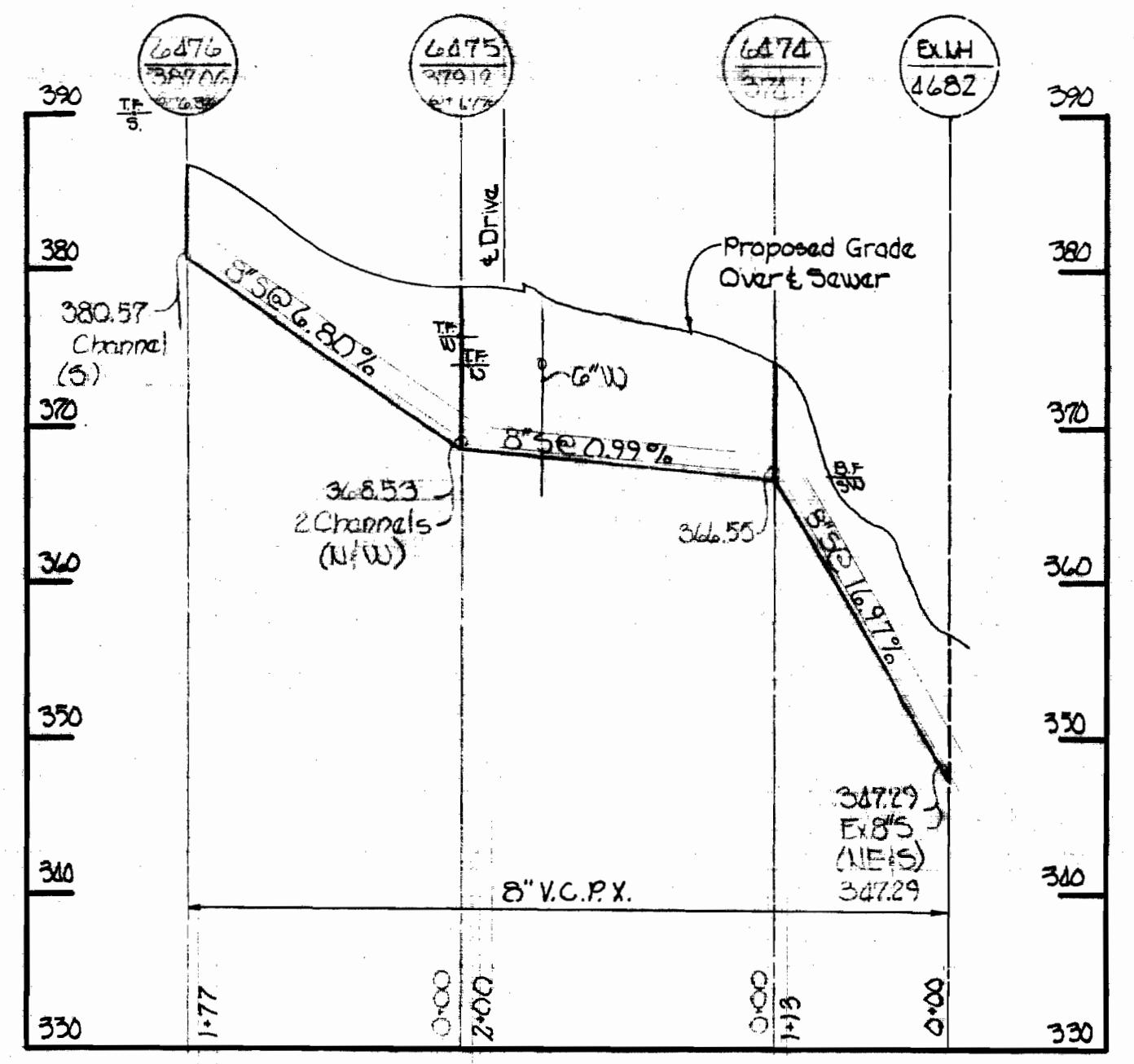
NOTE: SHC's not referenced due to Plumber constructing SHC's to end of 6" pipe under this contract.



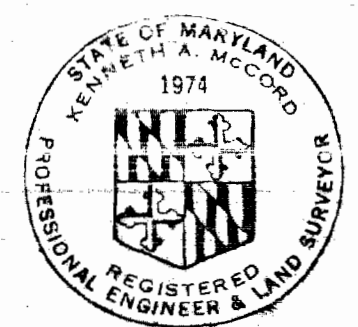
PROFILES
Horz: 1"=100'
Vert: 1"=10'



6" x 2" R BLOCKING DETAIL
Scale: 3/8"=1'-0"



DIARY & STAKEOUT I.U.F.B. #493



Kenneth A. McCord

Village of Oakland Mills
Parcel 'D' Section 2, Area 8
Contract No. C-393 W15

WHITMAN, REQUARDT & ASSOCIATES ENGINEERS 1304 ST. PAUL ST. BALTIMORE, MARYLAND	DEPARTMENT OF PUBLIC WORKS HOWARD COUNTY, MARYLAND 11-25-70 DATE	CONTRACT NO. C-393 W8S W. O. P. Chief-Bureau of Water and Sewer	PLAN AND PROFILES OF WATER & SEWER MAINS	COLUMBIA VILLAGE OF OAKLAND MILLS ELECTION DISTRICT GUILFORD NO. 6	DRAWING NO. 1 OF 1	SCALE AS SHOWN	501-482
					AS BUILT	JANUARY 1972	