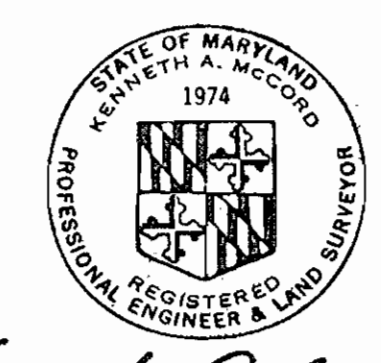


VICINITY MAP  
Scale: 1"=2000'

**GENERAL NOTES**

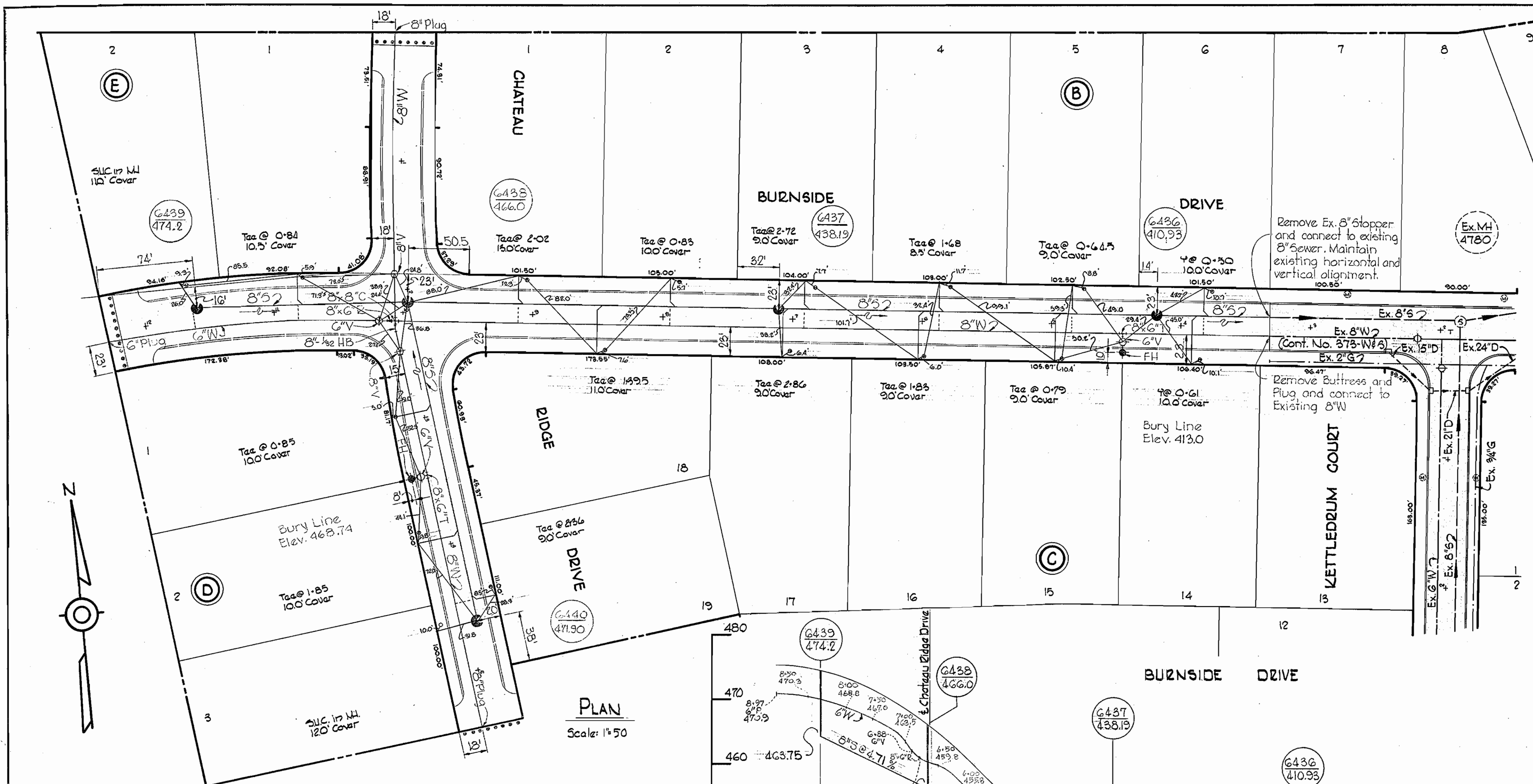
1. Approximate location of existing mains are shown. The Contractor shall take all necessary precautions to protect existing mains and services and maintain uninterrupted supply. Any damage incurred shall be repaired immediately.
2. All pipe elevations shown are invert elevations.
3. The Contractor shall locate existing utilities a minimum of two weeks in advance of construction operations in vicinity of utilities.
4. For all standard details see standards bound in Specifications.
5. All water mains shall have a minimum of 3 1/2' cover.
6. Block all fittings with concrete, see standards bound in Specifications.
7. Bury Line elevations on fire hydrants shall be set to the elevations shown on the drawings.
8. Cost of strapping fire hydrants and valves to be included in the unit price bid for furnishing and installing fire hydrants.
9. All fire hydrants shall be strapped to the tee and shall be buttressed with concrete in accordance with Standard Details.
10. Clear all utilities by a minimum of 6", clear all poles by 2'-0" minimum or tunnel as required.
11. All horizontal controls are based on Maryland State Datum, all vertical controls are based on Howard County Datum.
12. All manholes shall be 4'-0" inside diameter.
13. The Contractor shall provide a joint within 2'-0" of exterior manhole walls.

QUANTITIES	
6" Water	220' LF
8" Water	1,220' LF
8" Sewer	1,080' LF

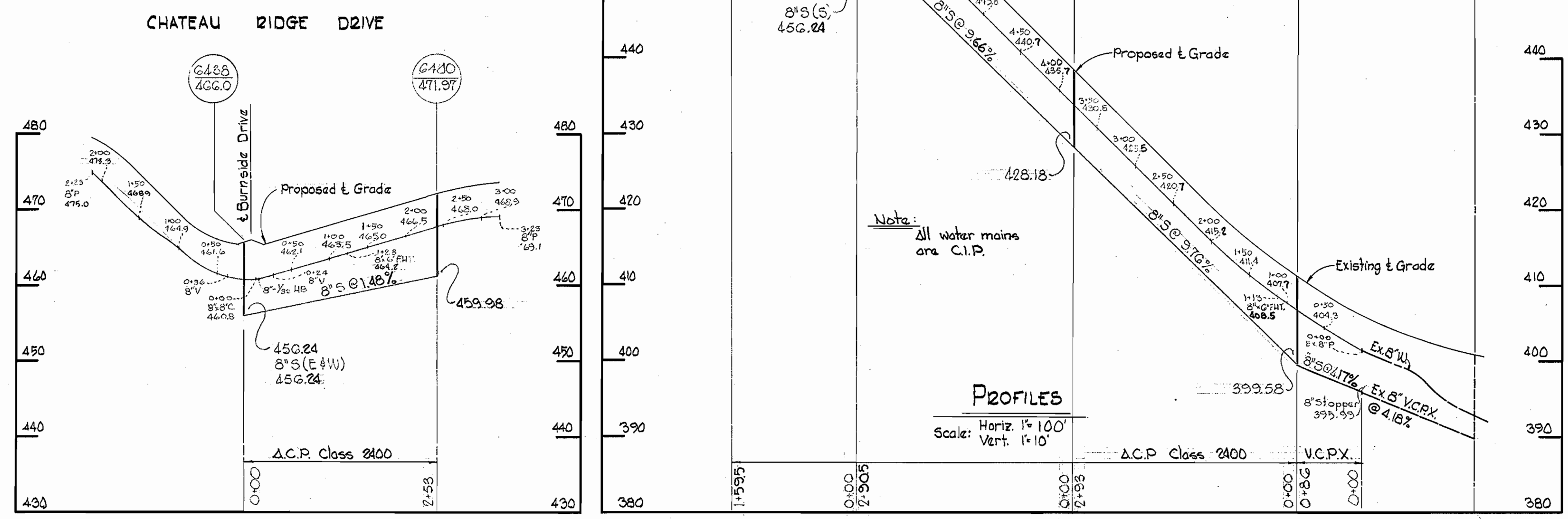


*Kenneth A. Moore*  
REGISTERED PROFESSIONAL ENGINEER & LAND SURVEYOR

Stakeout and Diary P.E. # 4829  
Chateau Ridge Section III  
Contract No. 392-W#5



PLAN  
Scale: 1"=50'



PROFILES  
Scale: Horiz 1"=100'  
Vert. 1"=10'

<b>WHITMAN, REQUARDT &amp; ASSOCIATES</b> ENGINEERS 1304 ST. PAUL ST. BALTIMORE, MARYLAND	<b>DEPARTMENT OF PUBLIC WORKS</b> HOWARD COUNTY, MARYLAND DATE: 10-29-70 <i>W. O. Pilbert</i> CHIEF-BUREAU OF WATER AND SEWER	<b>CONTRACT NO. 392-W#5</b>	<b>PLAN AND PROFILE OF WATER AND SEWER MAINS</b>	<b>CHATEAU RIDGE, SECTION NO. 3</b> ELECTION DISTRICT, ELLICOTT CITY NO. 2	<b>DRAWING NO. 1</b>	<b>SCALE AS SHOWN</b> 223-478
					<b>OF 1</b>	

W. O. 6024-2

AS BUILT 15, May, 1971

WS 392-W#5/1