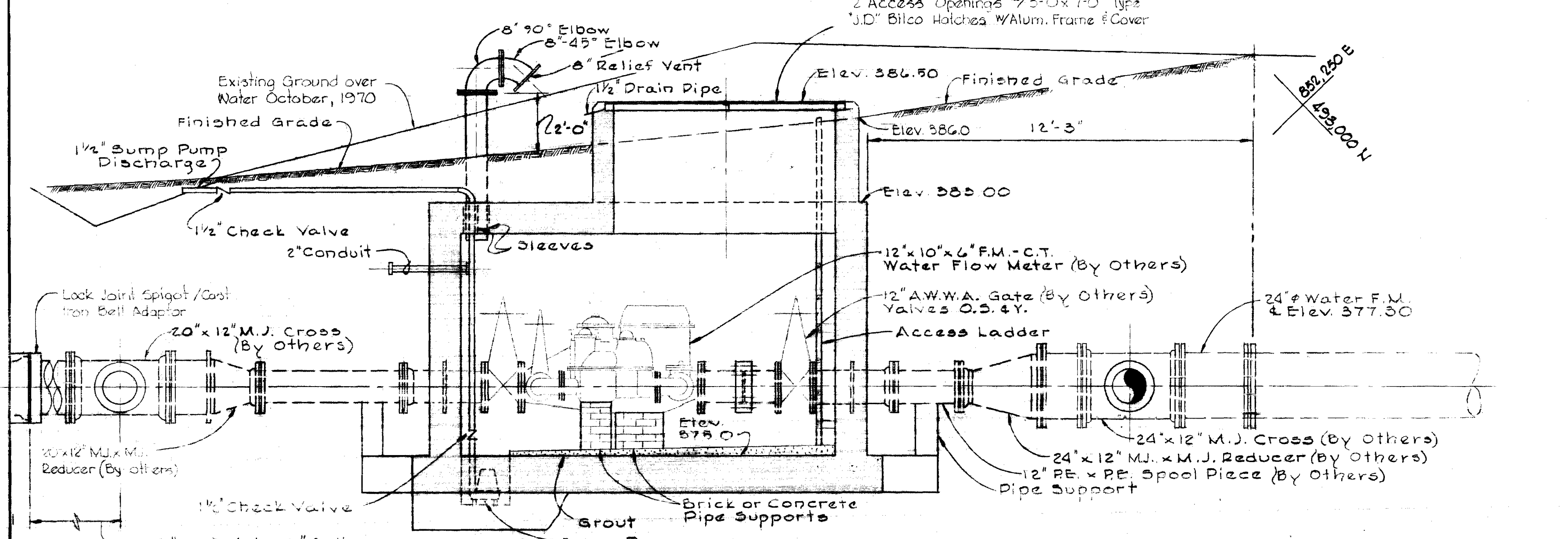


PLAN - WATER METER VAULT
Scale: 3/8" = 1'-0"

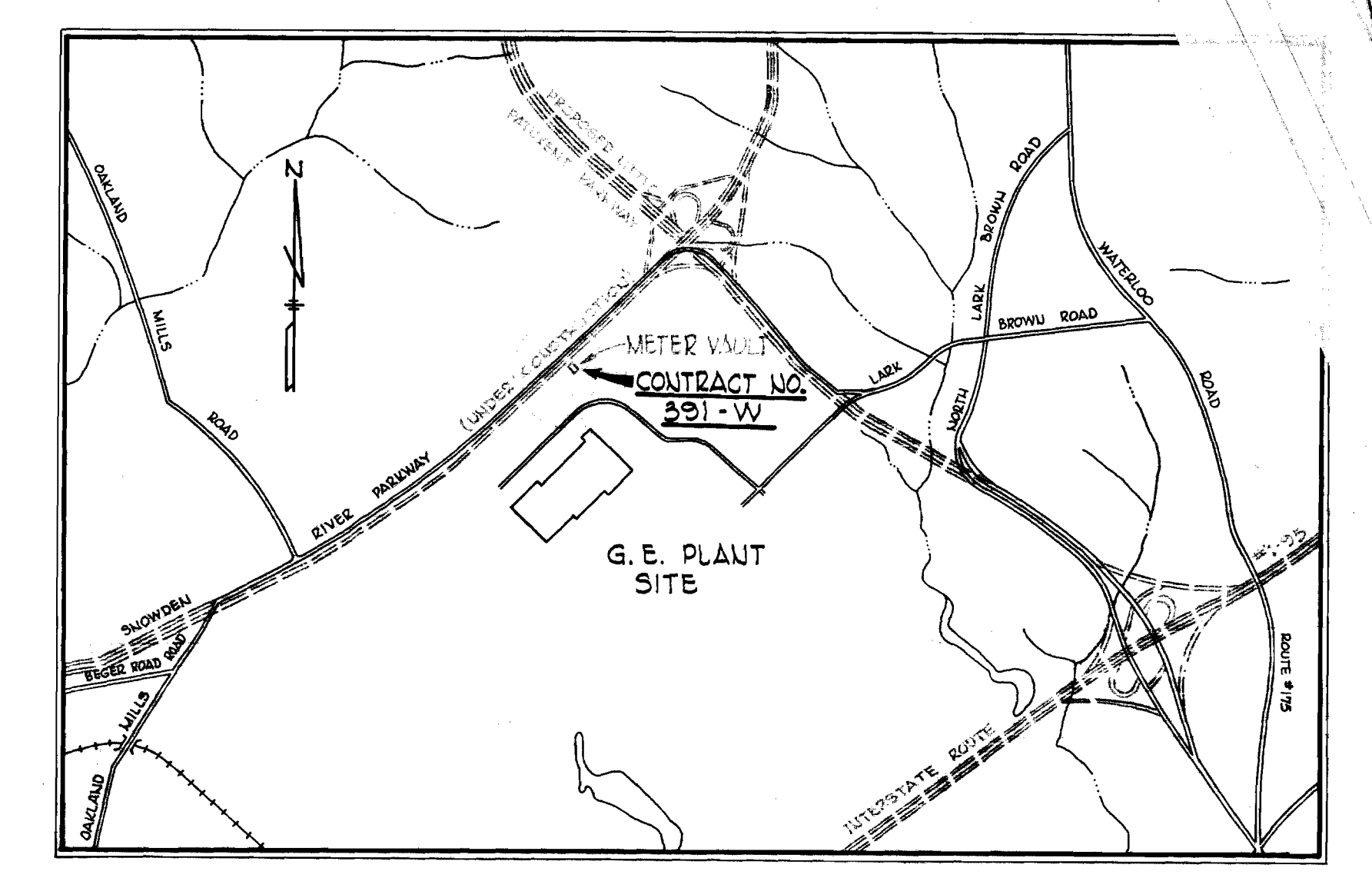


SECTION A-A
Scale: 3/8" = 1'-0"

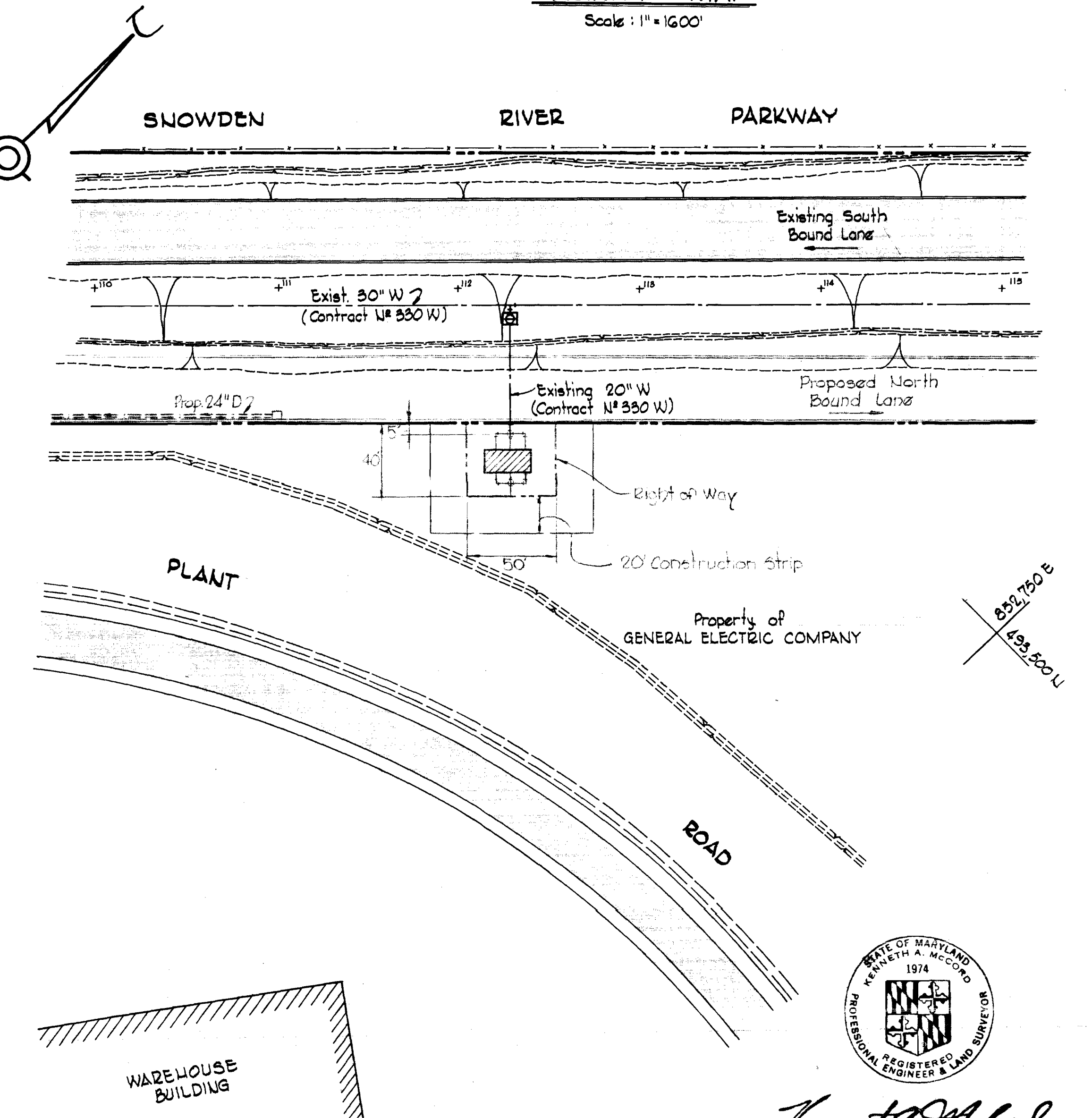
NOTE:
All 12" water main shall be
Cast Iron Pipe Class 23

NOTE:
Disturbed areas
shall be sodded

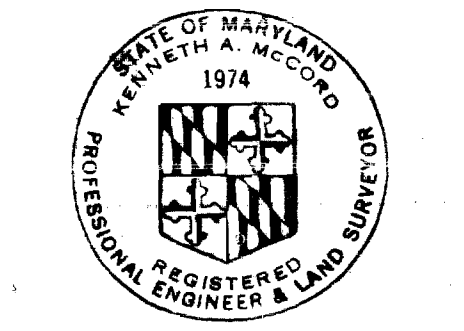
Note: Meters to be furnished &
installed by Howard County



VICINITY MAP
Scale: 1" = 1600'



PLAN
Scale: 1" = 50'

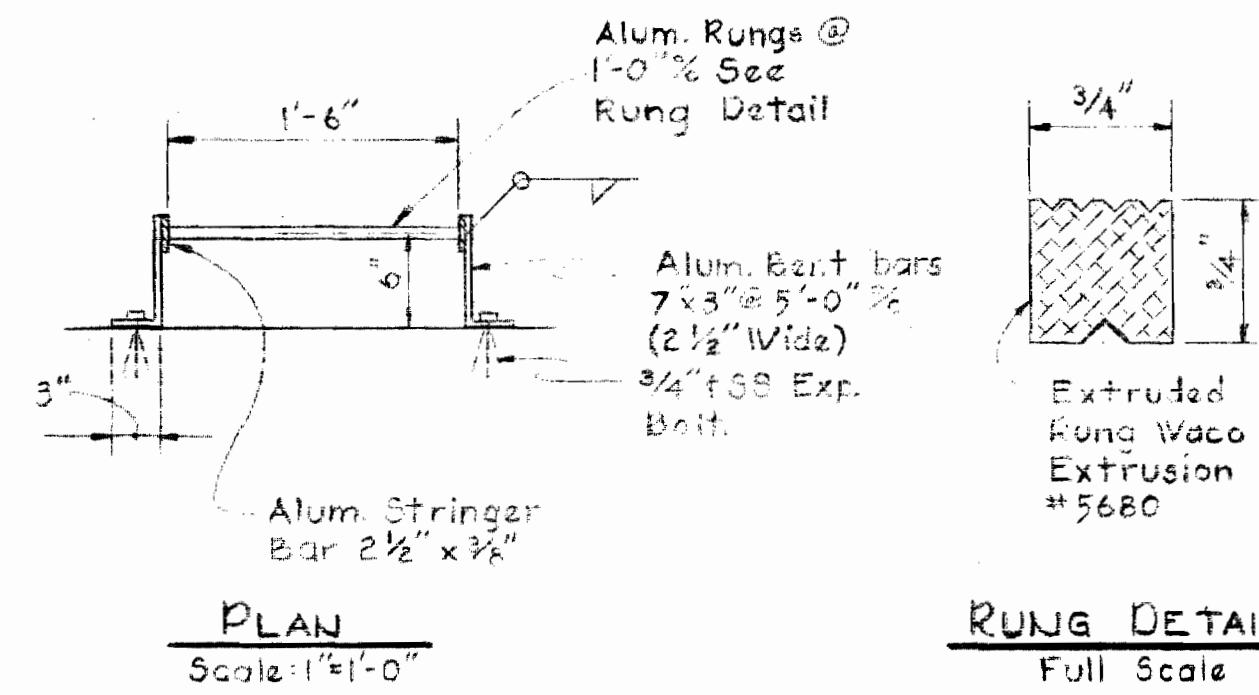


Kenneth A. McCord

WHITMAN, REQUARDT & ASSOCIATES ENGINEERS 1304 ST. PAUL ST. BALTIMORE, MARYLAND	DEPARTMENT OF PUBLIC WORKS HOWARD COUNTY, MARYLAND DATE <i>10-6-70</i> <i>W. O. Falbert</i> CHIEF-BUREAU OF WATER AND SEWER	CONTRACT NO. 391-W	PLAN AND DETAILS OF WATER VAULT	GENERAL ELECTRIC WATER METER VAULT	DRAWING NO. <u>1</u> OF <u>2</u>	SCALE AS SHOWN	Contract No 391-W 493-488
					OCTOBER 9, 1970		

GENERAL NOTES

1. Specification for Design: A.A.S.H.O. Standard Specification for Highway Bridges, 10th Edition, and Interim Specification, 1970.
2. Concrete shall have a minimum compressive strength of 3,500 psi at 28 days and shall be air entrained.
3. All exposed edges of concrete to be chamfered 3/4" unless otherwise noted.
4. Reinforcing steel shall conform to ASTM A615-70 Grade 40.
5. Reinforcing bar laps & development projections shall be 30 diameters unless otherwise noted.
6. The maximum soil bearing pressure for foundation design is 1/2 Ton per square foot.
7. Concrete cover for reinforcing bars shall be as noted.

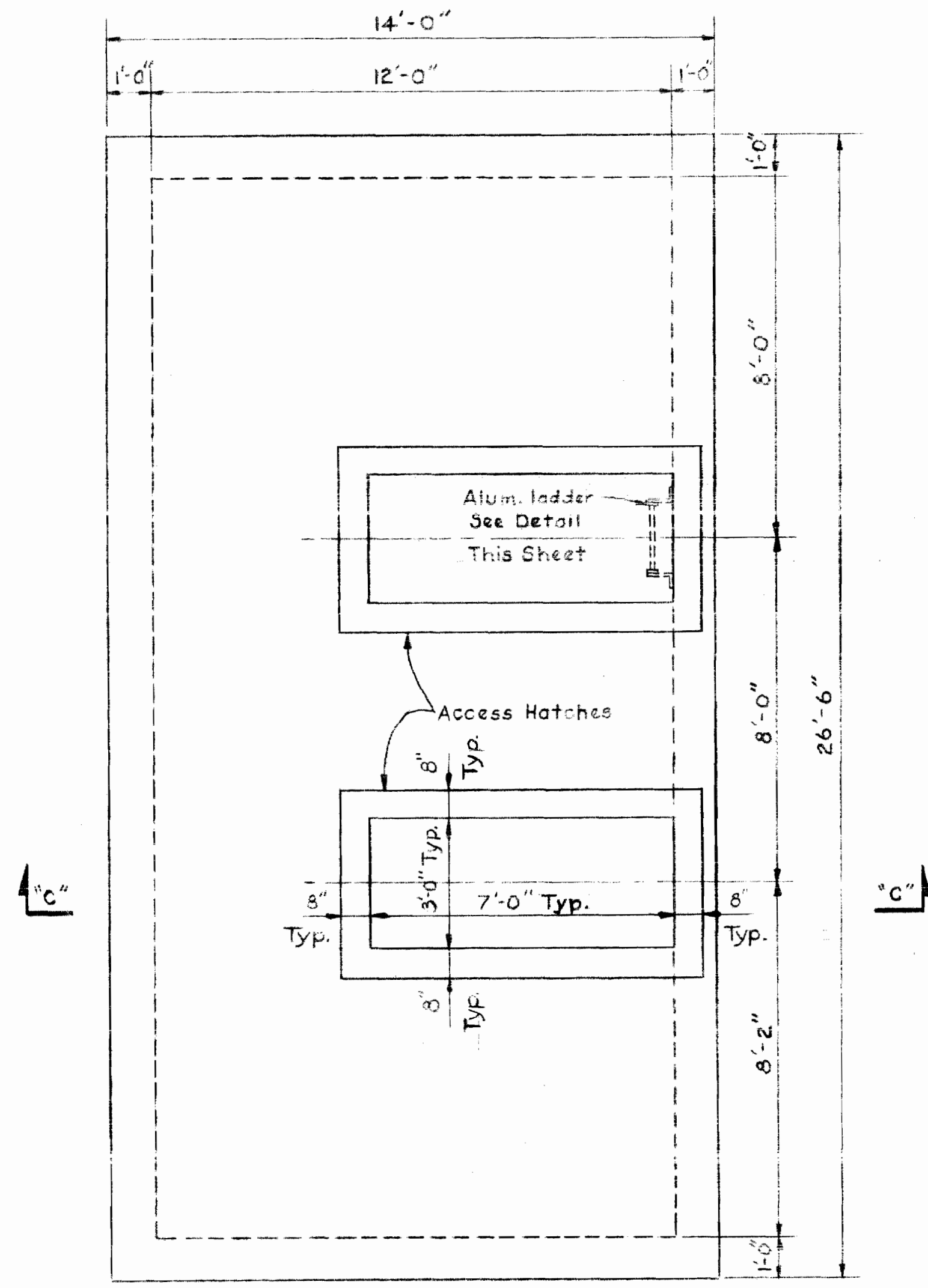


PLAN
Scale: 1/4" = 1'-0"

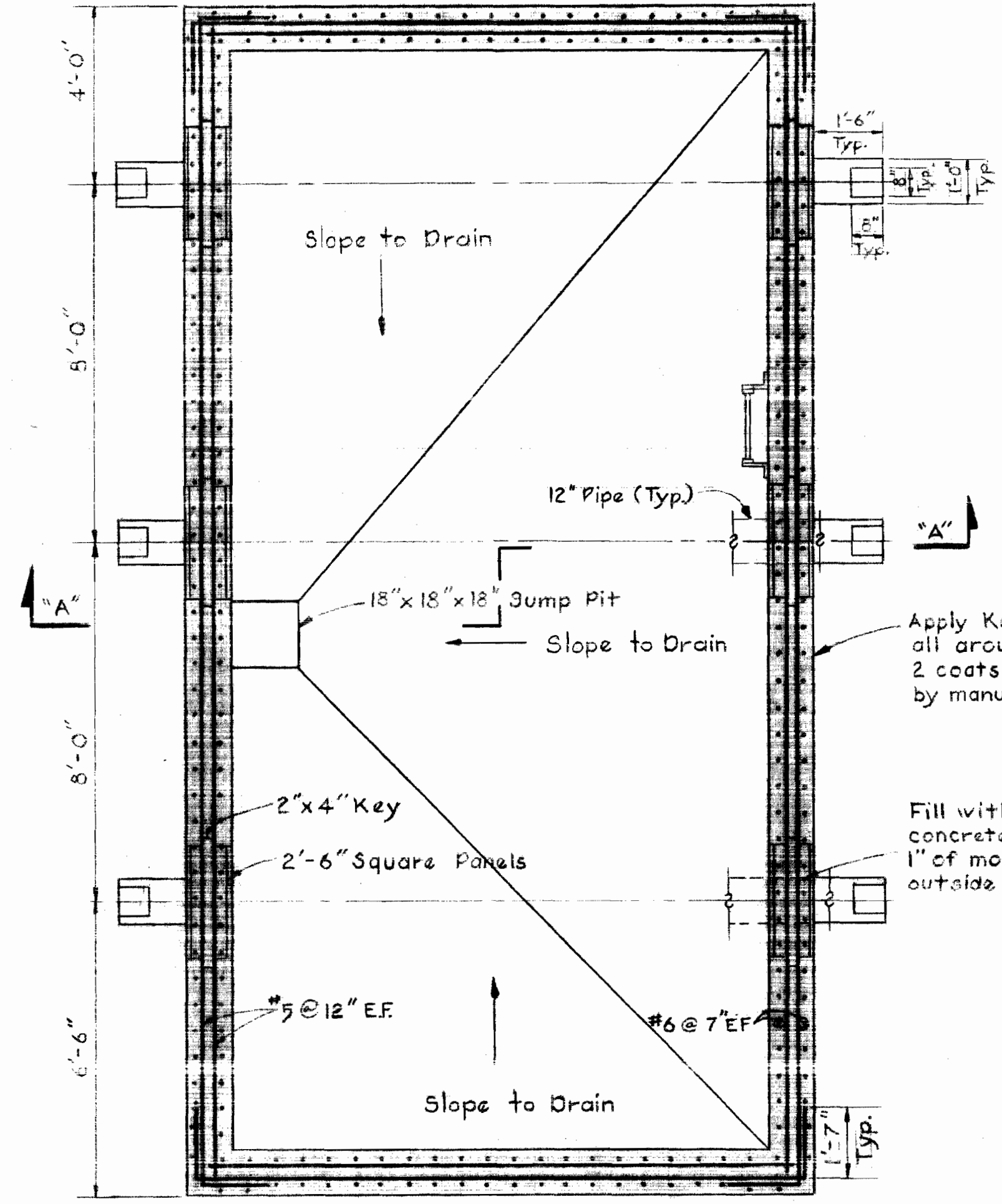
DETAIL OF ALUM. LADDER

Note: Use 4"x3"x 3/8" clip LS at bottom.

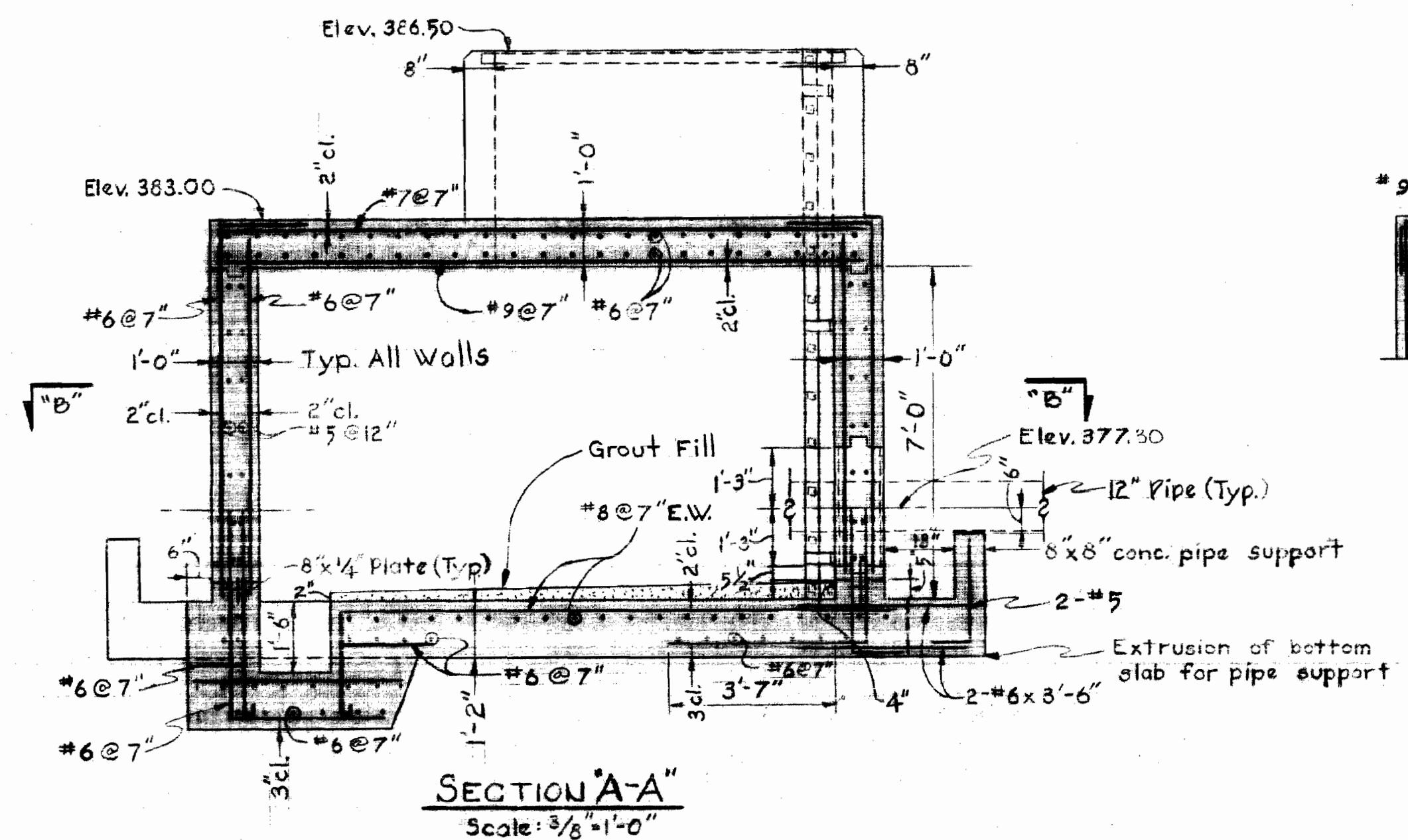
RUNG DETAIL
Full Scale



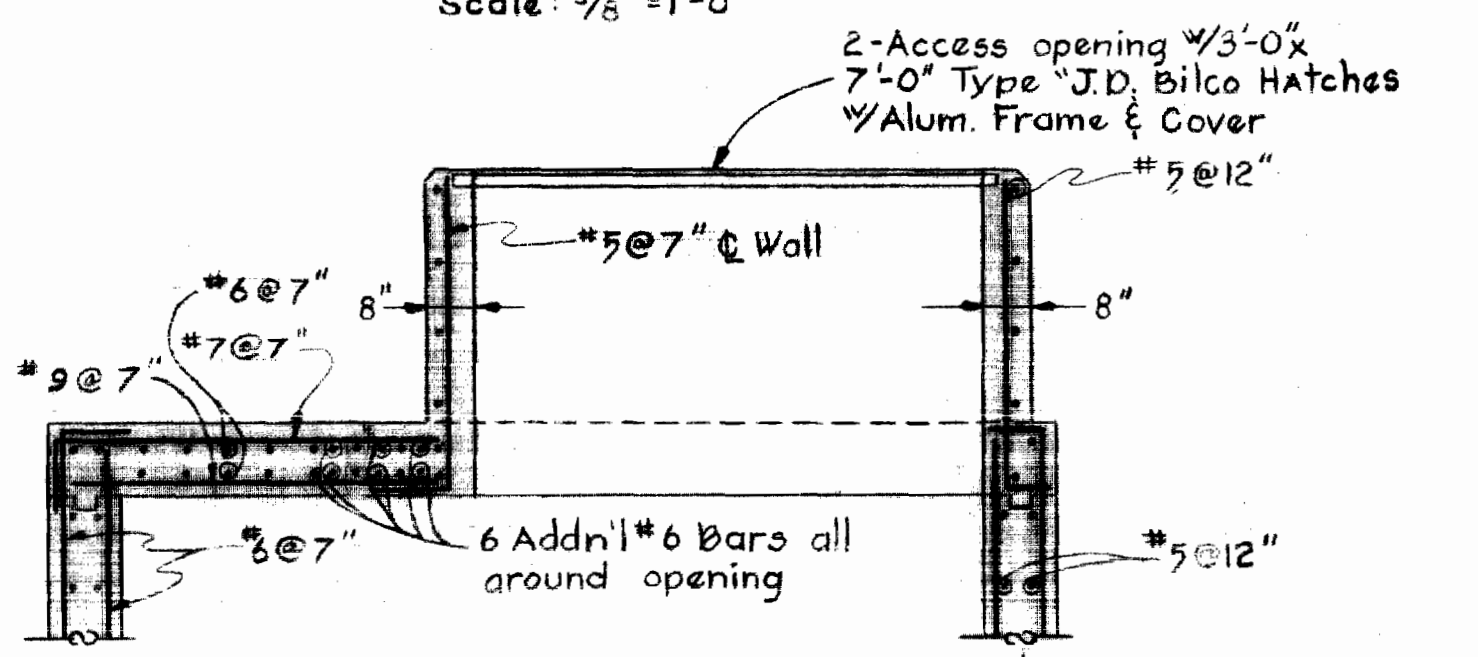
PLAN - WATER METER VAULT
Scale: 3/8" = 1'-0"



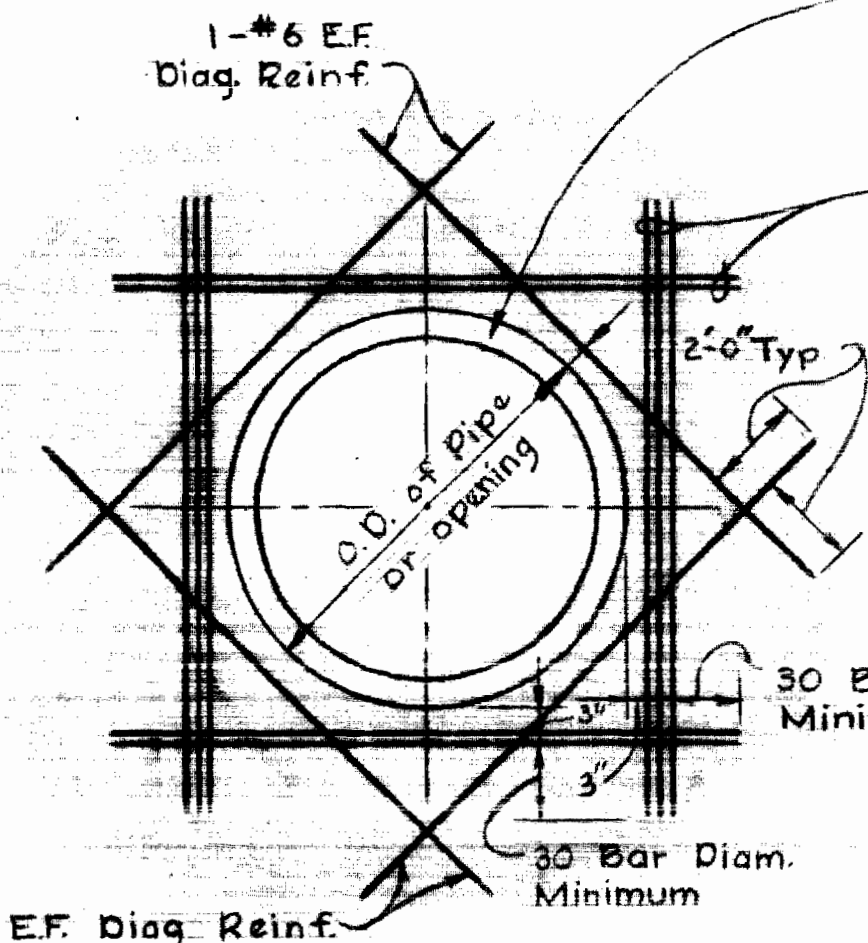
SECTION "B-B"
Scale: 3/8" = 1'-0"



SECTION "A-A"
Scale: 3/8" = 1'-0"



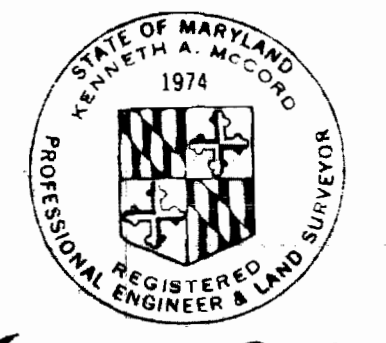
SECTION "C-C"
Scale: 3/8" = 1'-0"



ADDITIONAL REINFORCING AROUND OPENING IN WALLS
No Scale

Where pipe penetrates wall without fitting, supply 1" pre-molded Exp. Jt. material of a non-extruding sponge rubber and "vertiseal" sealant as manufactured by ~~Sealed~~ Products Co. or equal, all around pipe. Expansion joint material shall be compatible with the joint sealer and shall conform to ASTM D-1752-67 Type I

Additional Reinf. E.W.E.F. Min. of One-half the number of principle Reinf. bars interrupted by the opening, shall be provided on ea. side and ea. face of the opening; the reinf. size shall be of at least the size of the reinf. interrupted with a symmetrical number of bars ea. side of opening and shall be placed parallel to principle reinf.



Kenneth A. McCord

WHITMAN, REQUARDT & ASSOCIATES
ENGINEERS
1304 ST. PAUL ST.
BALTIMORE, MARYLAND

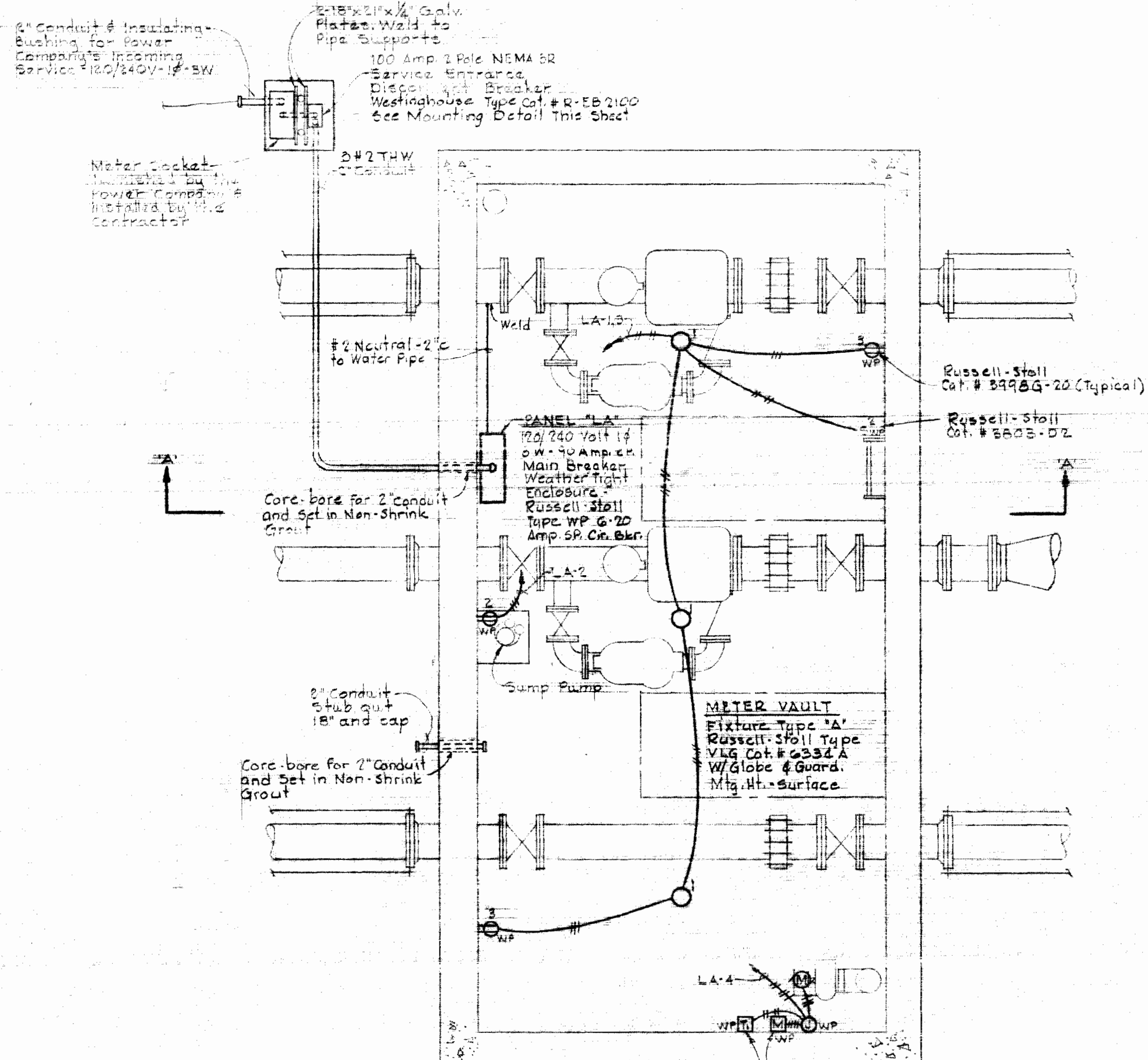
DEPARTMENT OF PUBLIC WORKS
HOWARD COUNTY, MARYLAND
10-6-70
DATE
W. O. Powell
CHIEF - BUREAU OF WATER AND SEWER

CONTRACT NO. 391-W

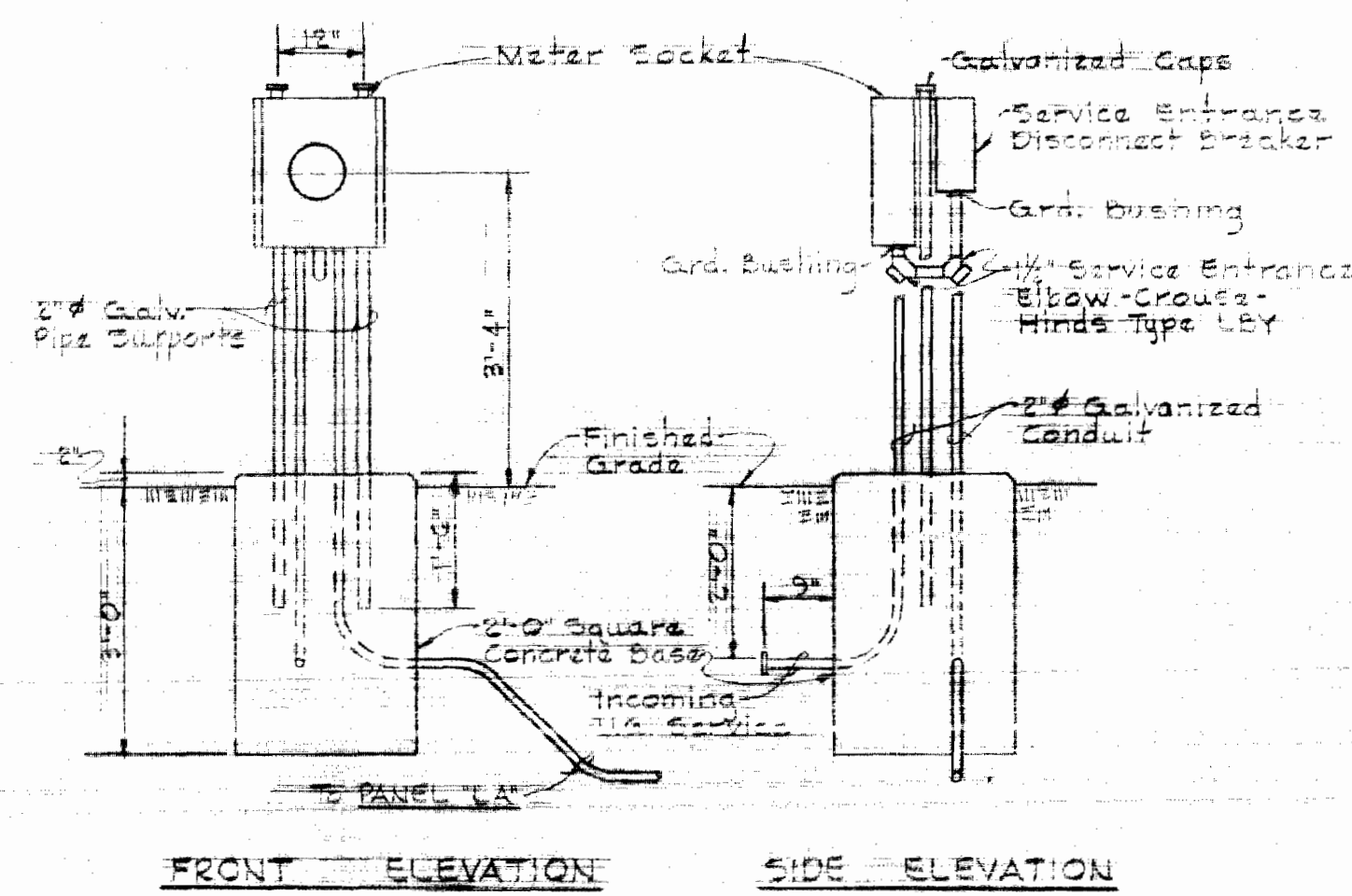
DETAILS OF
WATER VAULT

GENERAL ELECTRIC
WATER METER VAULT

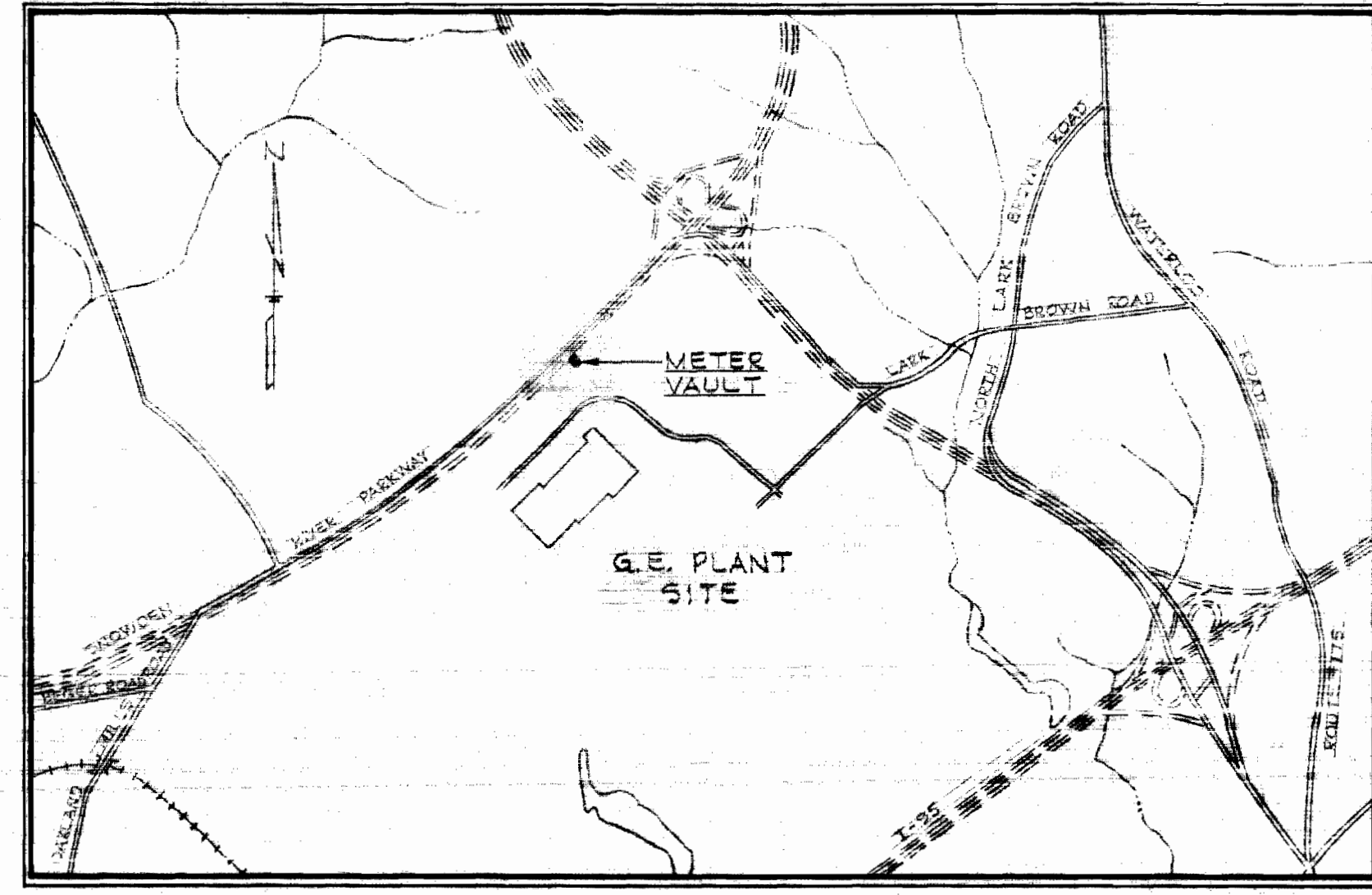
DRAWING
NO. 2
OF 2
SCALE
AS
SHOWN



PLAN-WATER METER VAULT
Scale: 3/8" = 1'-0"



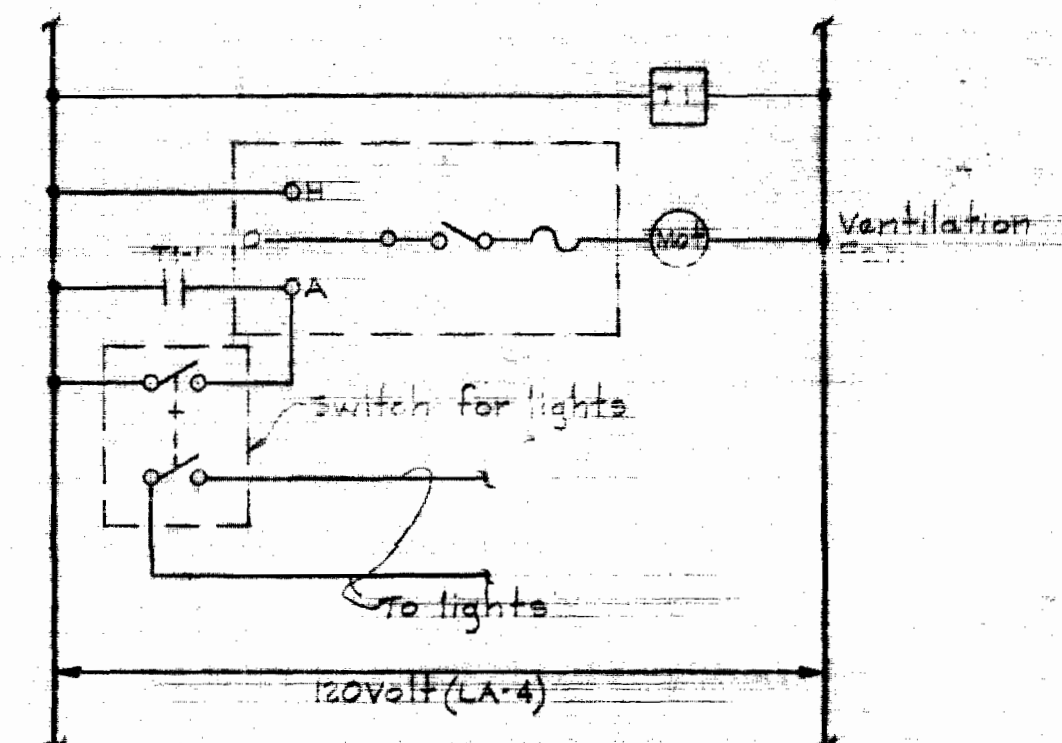
MOUNTING DETAIL FOR METER AND MAIN BREAKER
Scale: 1/2" = 1'-0"



VICINITY MAP
Scale: 1" = 100'

ELECTRICAL LEGEND

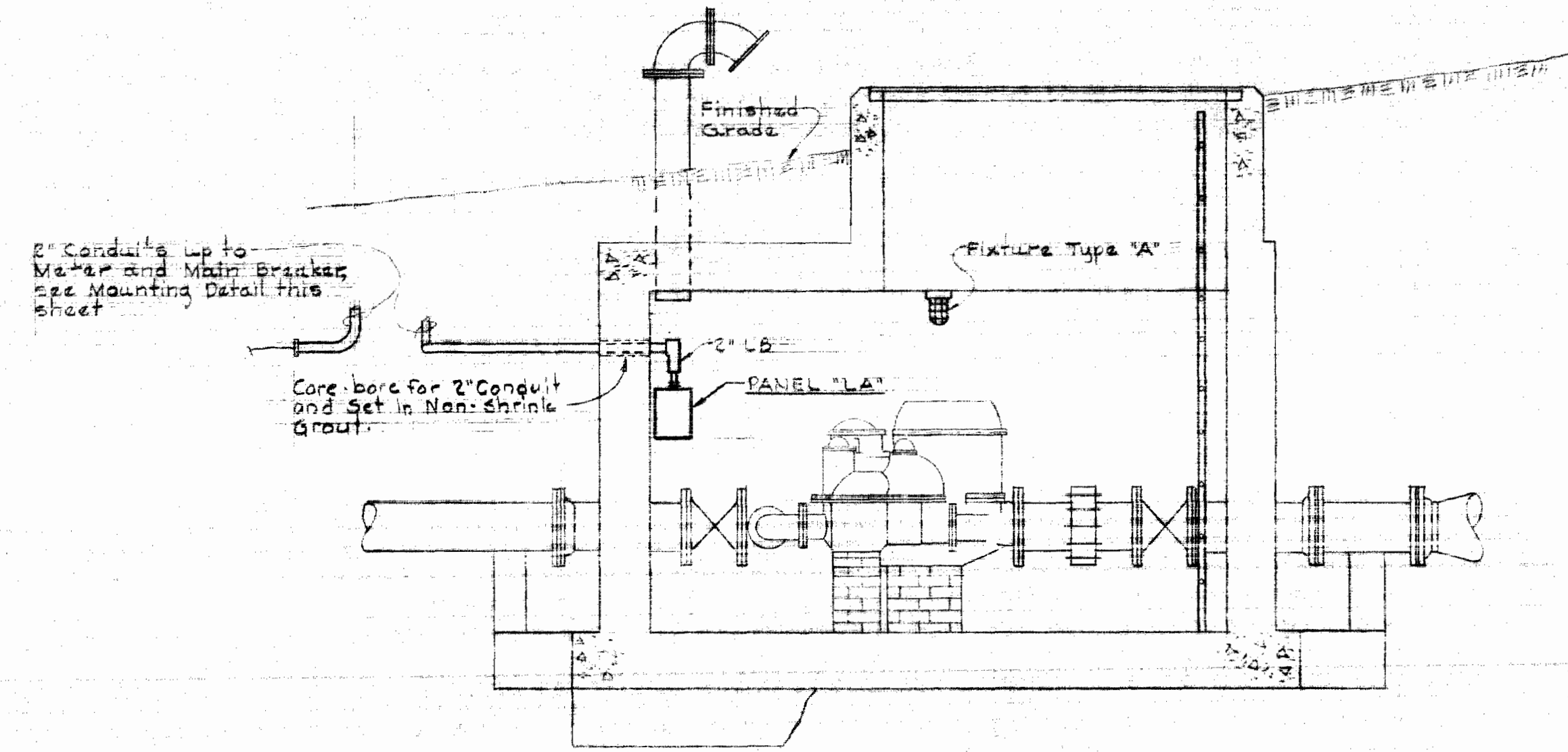
- Outlet-Inconceint-Ceiling
- ⊕ Outlet-Convenience-Mtg. Ht.
- ⊗ Switch-Two Pole
- Ⓜ Motor
- ⊙ Junction Box
- Conduit-On Ceiling or Wall
- - - Conduit-In or Under Floor
- /— Home-run To Panelboard - N^o of Arrows Indicates N^o of Circuits - N^o of Cross Lines Indicates N^o of Wires. Where No Cross Lines Appear, 2 Conductors Are Implied.
- WP Weatherproof
- T Timer
- M Motor Starter-Manual



ELEMENTARY CONTROL DIAGRAM FOR VENTILATION FAN

GENERAL ELECTRICAL NOTES

1. All wire to be #12 A.V.G. minimum, unless otherwise noted.
2. All electrical equipment mounted on concrete shall be spaced 1 1/2" away from the concrete surface, unless otherwise noted. All spacers shall be made of corrosion resistant metal.
3. All conduits shall be 3/4" diameter minimum aluminum, unless otherwise noted.
4. All brazed connections on aluminum fittings, boxes, cover plates, etc. shall be made with stainless steel hardware.



SECTION 'A-A'
Scale: 1/8" = 1'-0"

WHITMAN, REQUARDT & ASSOCIATES ENGINEERS 1304 ST. PAUL ST. BALTIMORE, MARYLAND	DEPARTMENT OF PUBLIC WORKS HOWARD COUNTY, MARYLAND March 11 1971 DATE	CONTRACT NO. 39-LW W. O. Gillett CHIEF-BUREAU OF WATER AND SEWER	ELECTRICAL DETAILS	GENERAL ELECTRIC WATER METER VAULT	DRAWING NO. 2A	SCALE AS SHOWN
					OF 2	