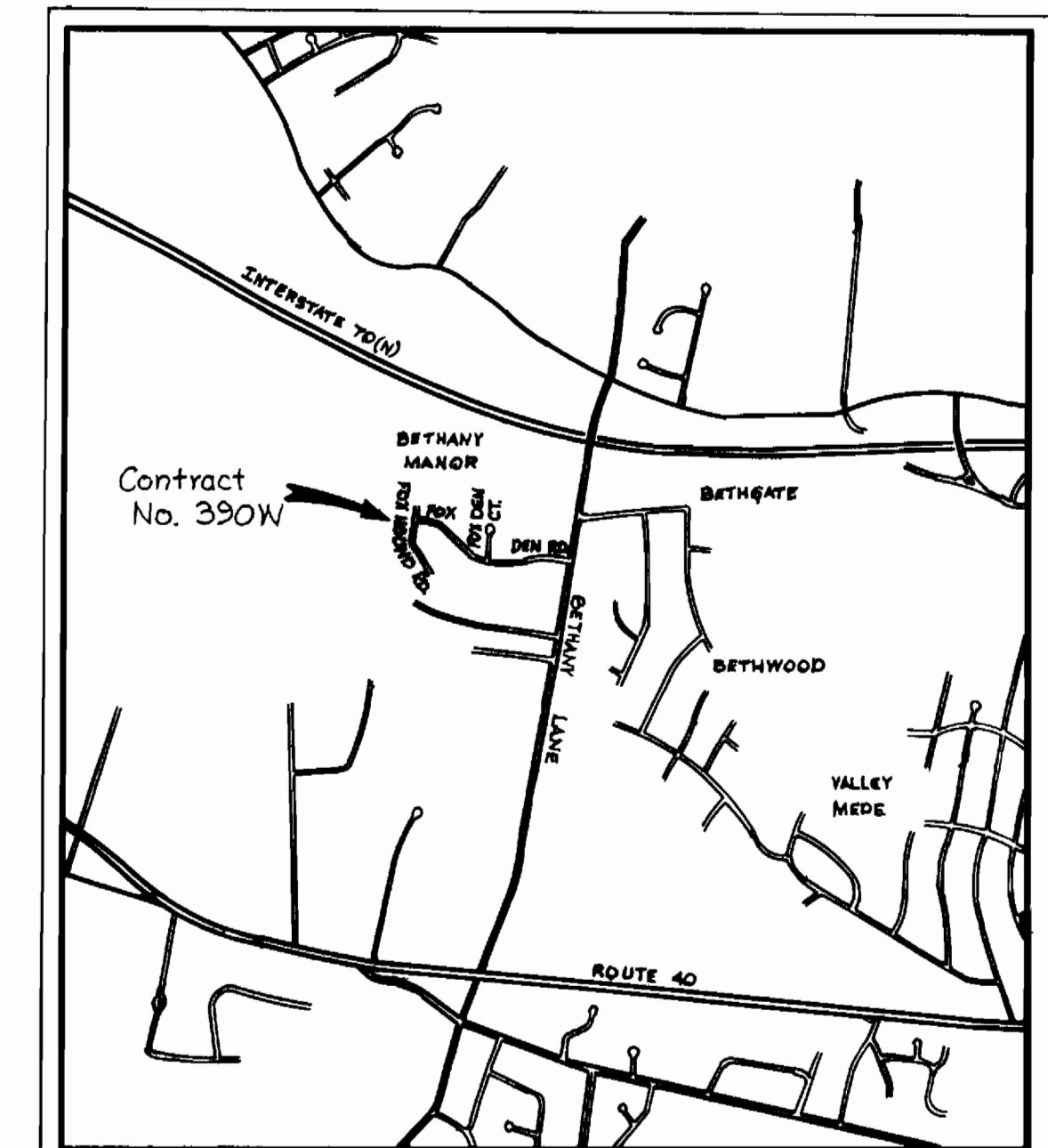
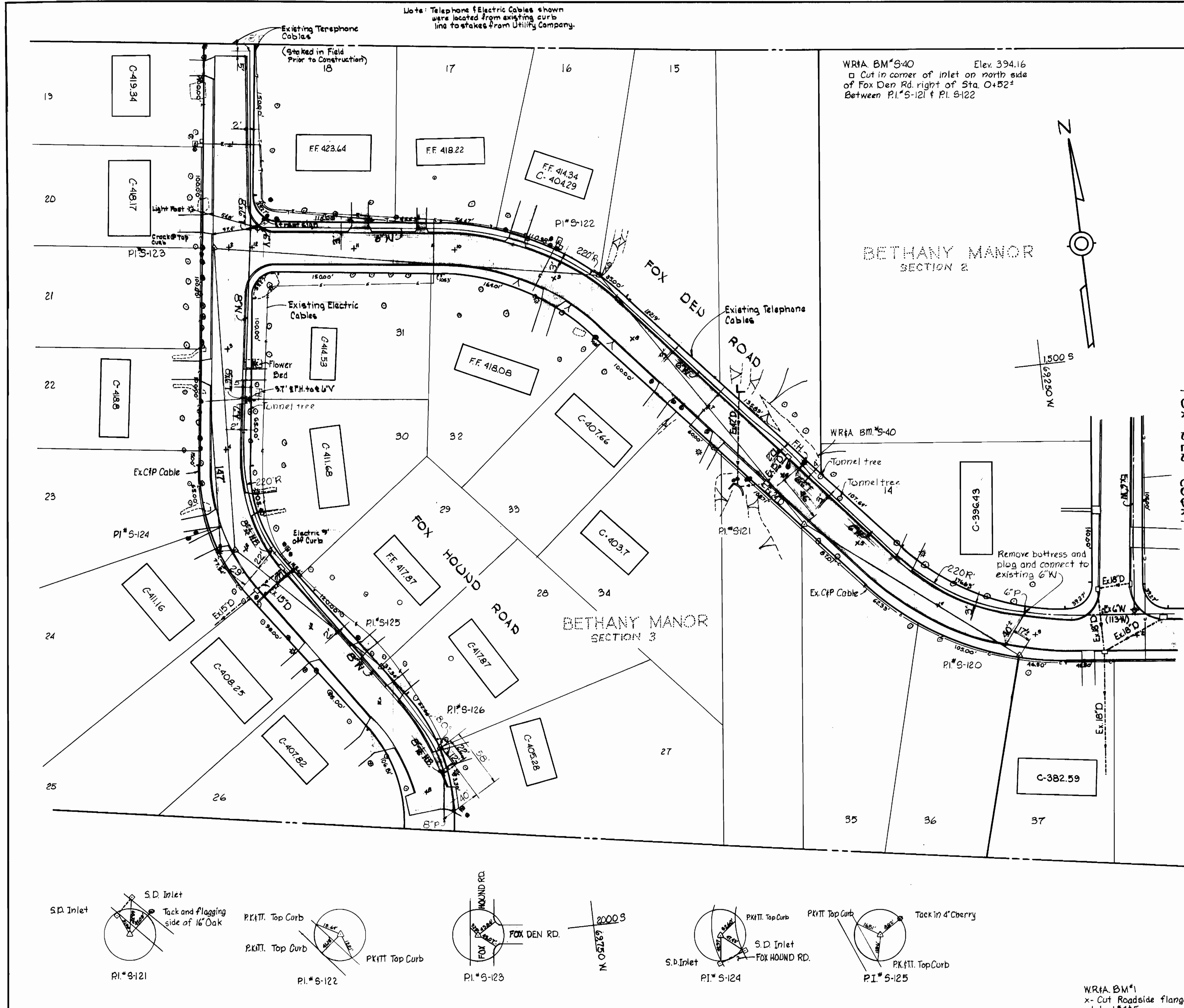


Note: Telephone & Electric Cables shown were located from existing curb line to stakes from Utility Company.

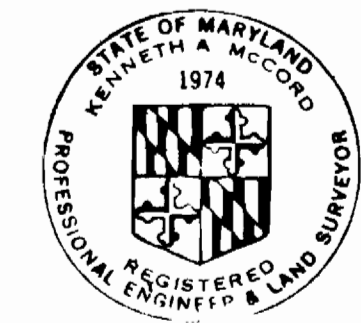


VICINITY MAP
Scale: 1"=2000

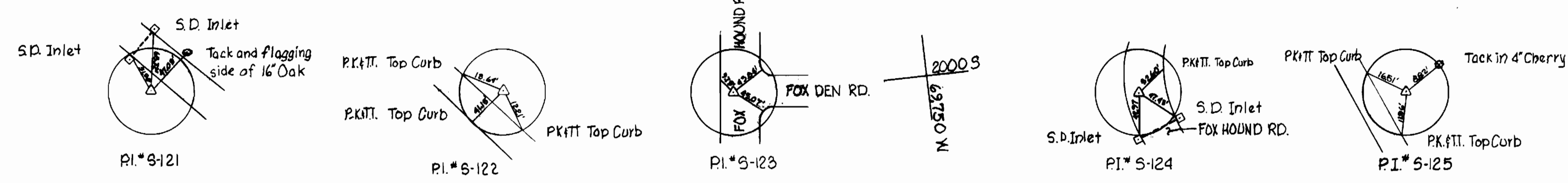
GENERAL NOTES

1. Approximate location of existing mains are shown. The Contractor shall take all necessary precautions to protect existing mains and services and maintain uninterrupted supply. Any damage incurred shall be repaired immediately.
2. All pipe elevations shown are invert elevations.
3. The Contractor shall locate existing utilities a minimum of two weeks in advance of construction operations in vicinity of utilities.
4. For all standard details see standards bound in specifications.
5. Block all fittings with concrete, see standard details bound in specifications.
6. Bury line elevations on Fire Hydrants shall be set the same as top of curb, edge of paving, or as directed by the engineer in the field.
7. Cost of strapping Fire Hydrants and Valves to be included in the unit price bid for furnishing and installing Fire Hydrants.
8. Clear all utilities by a minimum of 6'; clear all poles by 2'-0" minimum or tunnel as required.
9. All Fire Hydrants shall be strapped to trees and boltressed with concrete in accordance with standard details.
10. All water mains shall have a minimum of 3 1/2' cover.
11. All horizontal and vertical controls are based on Maryland State Datum.
12. Telephone Cables in this area, before starting work call collect at any time Baltimore, Md. 393-3553 for Telephone Co. Representative

QUANTITIES	
Size	Length
6" Water	900'
8" Water	825'



Kenneth A. McCord

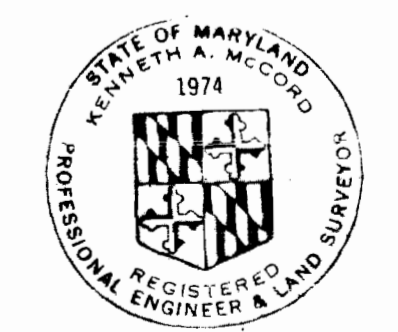
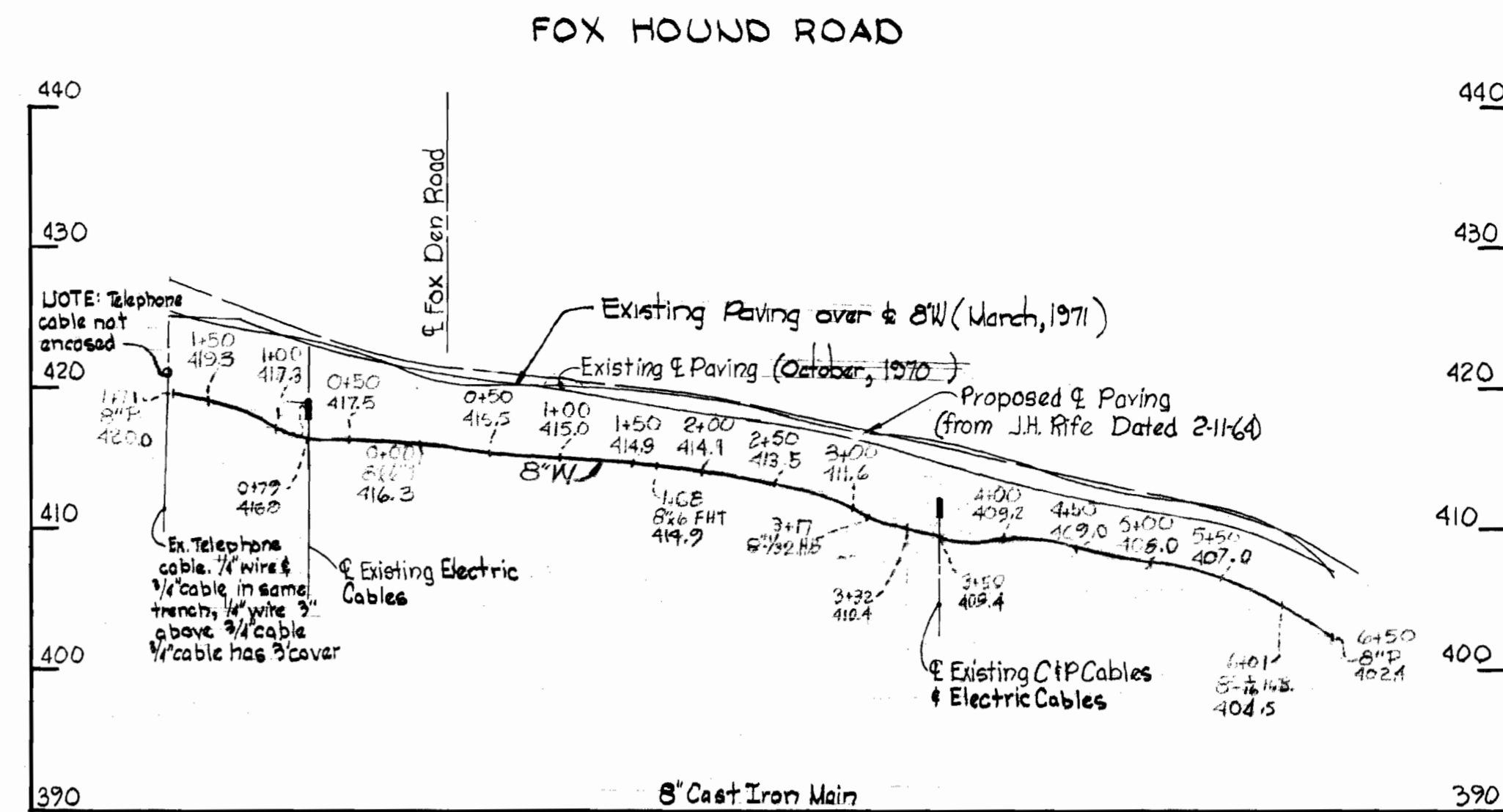
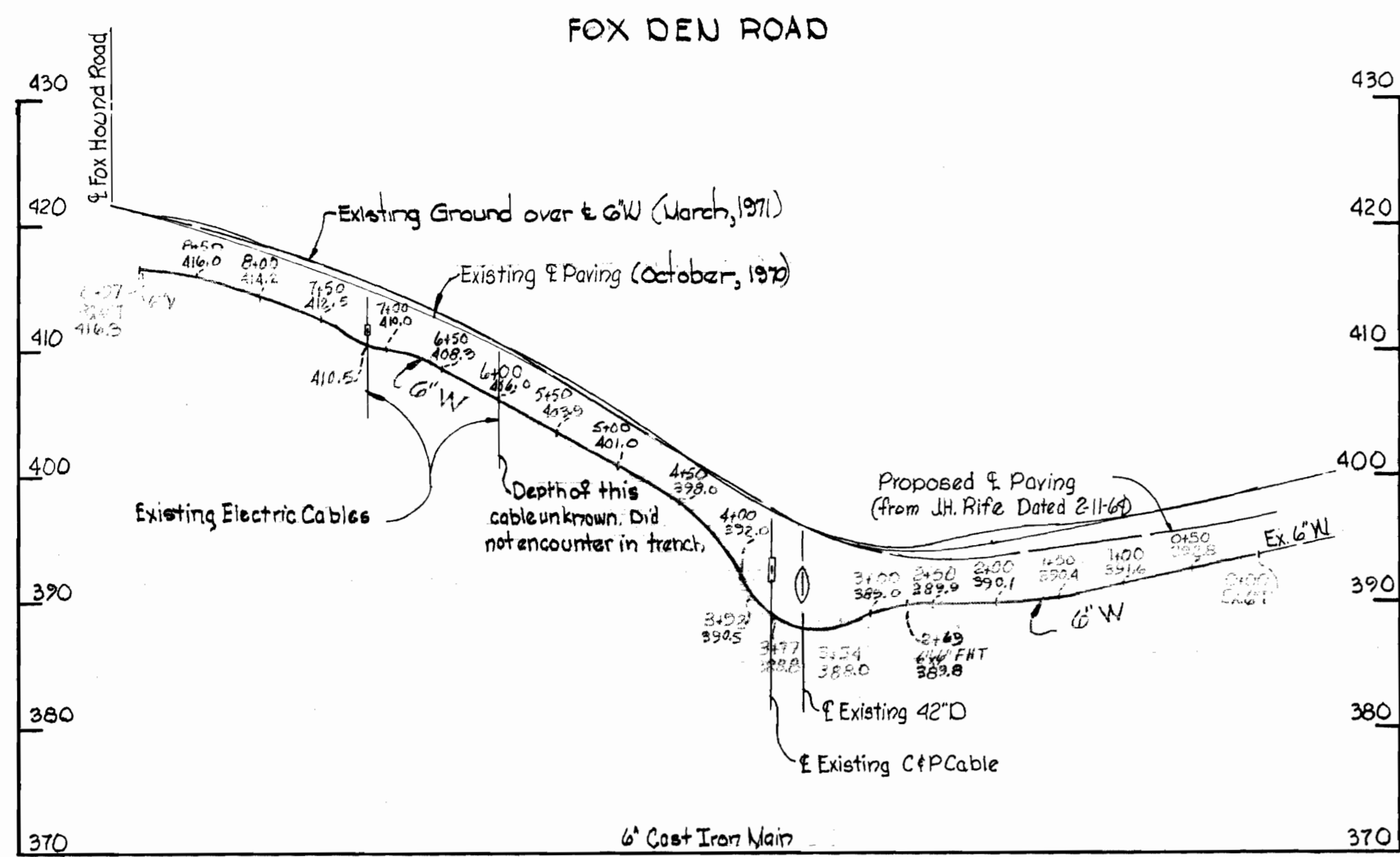


W.R.#A. BM*1 Elev. 44.64
x- Cut Roadside flangebolt on fire hydrant at Lot #45
Stakeout & Diary #FB*4951
Bethany Manor Section 3
Contract No. 390-W

WHITMAN, REQUARDT & ASSOCIATES ENGINEERS 1304 ST. PAUL ST. BALTIMORE, MARYLAND	DEPARTMENT OF PUBLIC WORKS HOWARD COUNTY, MARYLAND <i>W. O. Felber</i> CHIEF - BUREAU OF WATER AND SEWER	CONTRACT NO. 390-W	PLAN OF WATER MAINS	ELECTION DISTRICT ELLCOTT CITY NO.2	DRAWING NO. 1	SCALE 1"=50'
					OF 2	

W. O. 6185-2

AUGUST 31, 1971



Kenneth A. McLeod

Bethany Manor Section 3
Contract No. 390-W

WHITMAN, REQUARDT & ASSOCIATES ENGINEERS 1304 ST. PAUL ST. BALTIMORE, MARYLAND	DEPARTMENT OF PUBLIC WORKS HOWARD COUNTY, MARYLAND 11-10-70 <i>W. O. Gilbert</i> CHIEF-BUREAU OF WATER AND SEWER	CONTRACT NO. 390-W	PROFILE OF WATER MAINS	ELECTION DISTRICT ELLICOTT CITY NO. 2	DRAWING NO. 2 OF 2	SCALE H:1"=100' V:1"=10'
---	--	--------------------	---------------------------	--	--------------------------	--------------------------------

WS 390-W/2

10/11/71

10/11/71

10/11/71