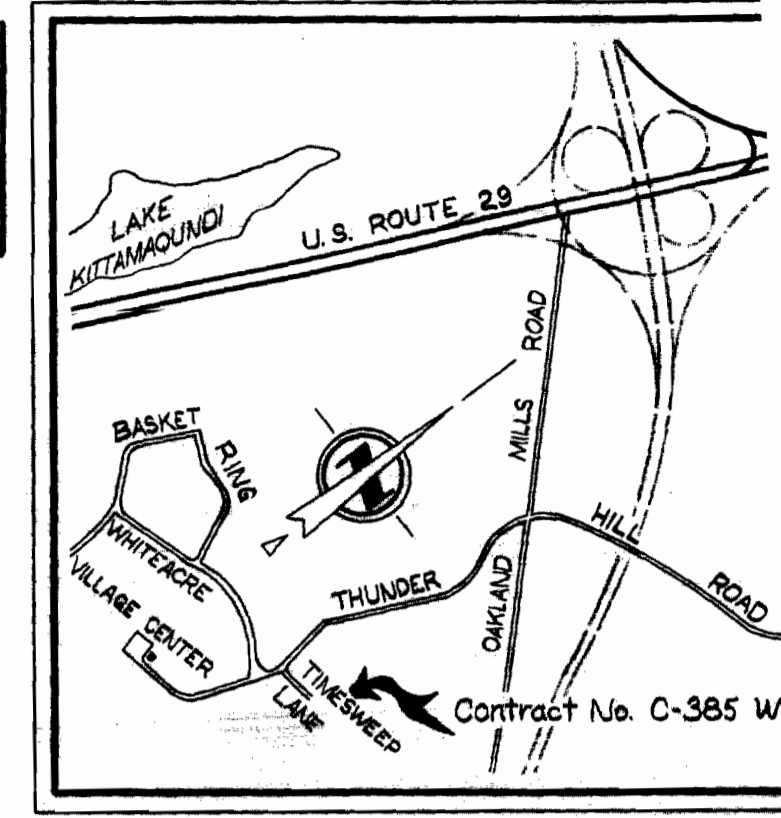


WS 385-W&S/1

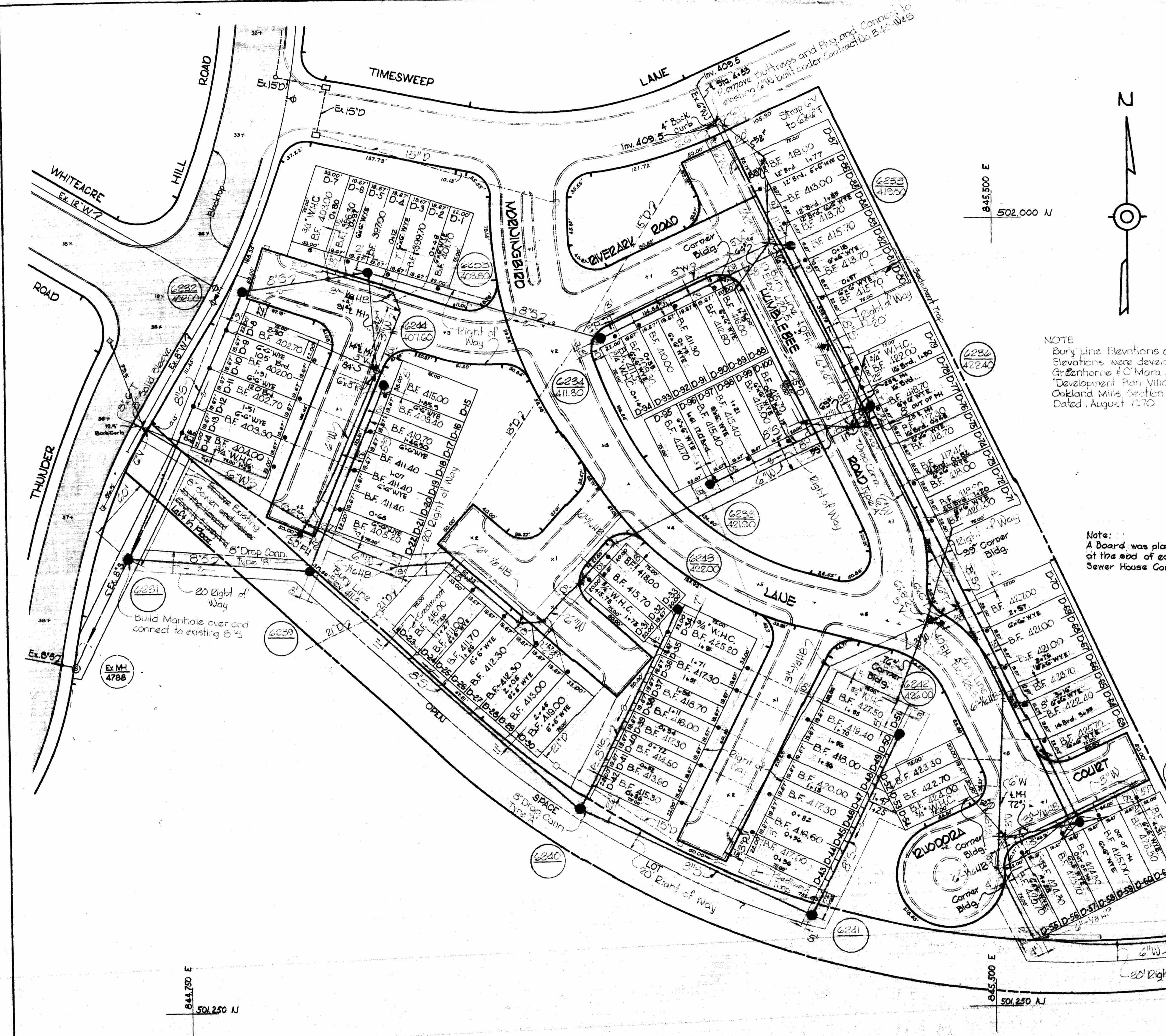
QUANTITIES	
8" Water	1750'
6" Water	2000'
8" Sewer	2940'
Fire Hydrants	2



VICINITY MAP  
Scale: 1"=1600'



*Kenneth A. McCord*



NOTE  
Bury Line Elevations and Right-of-Way Elevations were developed from Greenhome & O'Mara, Inc. "Development Plan Village of Oakland Mills, Section 2 Area 4" Dated August 1970

Note:  
A Board was placed at the end of each Sewer House Connection.

**GENERAL NOTES**

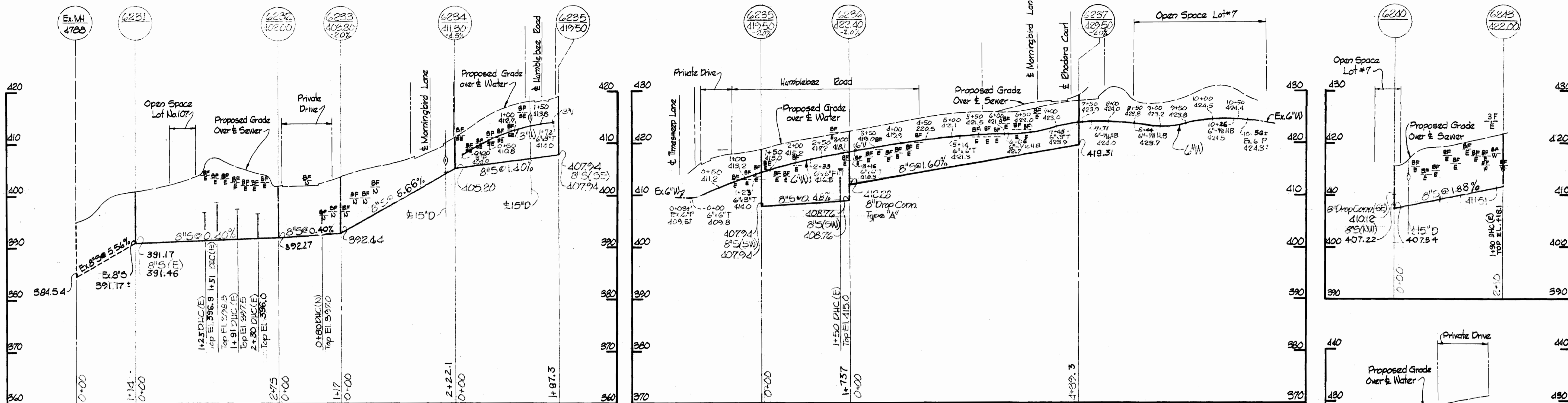
1. Approximate location of existing mains are shown. The Contractor shall take all necessary precautions to protect existing mains and services and maintain uninterrupted supply. Any damage incurred shall be repaired immediately.
2. All pipe elevations shown are invert elevations.
3. The Contractor shall locate existing utilities a minimum of two weeks in advance of construction operations in vicinity of utilities.
4. For all standard details see standards bound in Specifications.
5. All horizontal and vertical controls are based on Maryland State Datum.
6. Clear all utilities by a minimum of 6"; Clear all poles by a minimum of 2'-0" or tunnel as required.
7. All water mains are to have a minimum of 3 1/2' cover.
8. Block all fittings with concrete, see standards bound in Specifications.
9. Bury Line elevations on fire hydrants shall be set to elevations shown on drawings or as directed by the Engineer in the field.
10. All fire hydrants shall be strapped and buttressed in accordance with Standard Details.
11. Cost of strapping fire hydrants and valves to tees to be included in unit price bid for furnishing and laying of water mains.
12. The Contractor shall provide a joint in all sewer mains within 2'-0" of exterior manhole walls.
13. All manholes shall be 4'-0" inside diameter.

Note:  
Stakeout & Diary F/B 4856 A.C.P. used for sewer C.I.P. used for water.

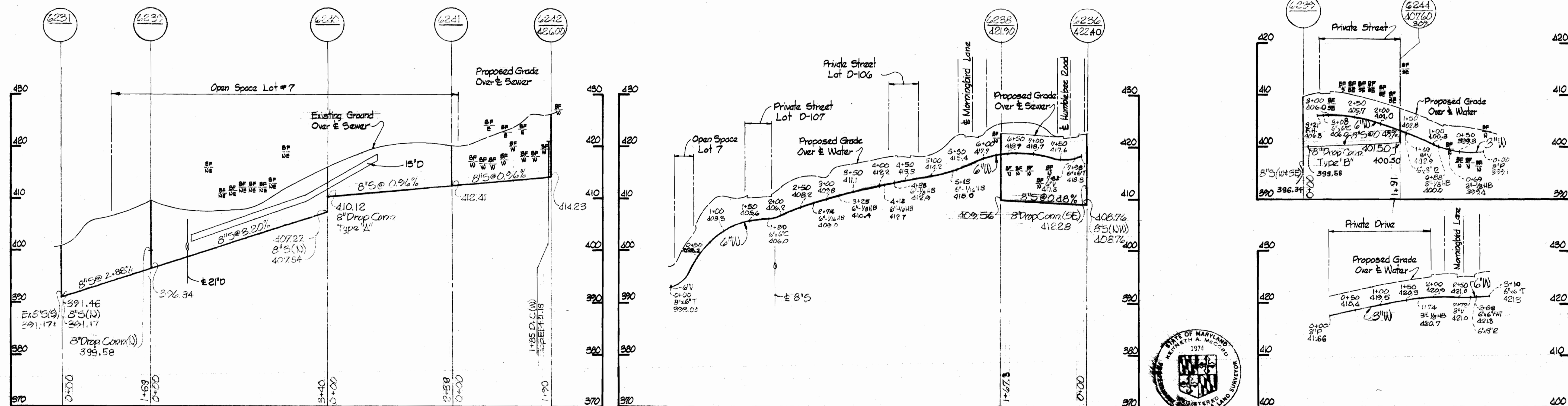
Village of Oakland Mills  
Section 2 - Area 4  
Prospect Walk  
C-385 W&S

<b>WHITMAN, REQUARDT &amp; ASSOCIATES</b> ENGINEERS 1304 ST. PAUL ST. BALTIMORE, MARYLAND	<b>DEPARTMENT OF PUBLIC WORKS</b> HOWARD COUNTY, MARYLAND Sept. 27-70 <i>W.O. Faller</i> CHIEF - BUREAU OF WATER AND SEWER	<b>CONTRACT NO. C-385 W&amp;S</b>	<b>PLAN OF</b> <b>WATER &amp; SEWER MAINS</b>	<b>COLUMBIA</b> <b>VILLAGE OF OAKLAND MILLS</b> <b>ELECTION DISTRICT GUILFORD NO. 6</b>	<b>DRAWING</b> <b>NO. 1</b> <b>OF 2</b>	<b>SCALE</b> <b>1"=50'</b>
--	--	-----------------------------------	--	---	---	-------------------------------

WS 385-W&S/2



Note:  
Build Manholes 623,  
6239 thru 6241 to  
Existing Ground



*Kenneth J. McLeod*

Village of Oakland Mills  
Section 2 Area 4  
Prospect Walk  
Contract No. C-385W&S

<b>WHITMAN, REQUARDT &amp; ASSOCIATES</b> ENGINEERS 1304 ST. PAUL ST. BALTIMORE, MARYLAND	<b>DEPARTMENT OF PUBLIC WORKS</b> HOWARD COUNTY, MARYLAND Sept 27 70 <i>W. O. Filbert</i> CHIEF - BUREAU OF WATER AND SEWER	<b>CONTRACT NO. C-385 W&amp;S</b>	<b>PROFILES OF WATER &amp; SEWER MAINS</b>	<b>COLUMBIA VILLAGE OF OAKLAND MILLS ELECTION DISTRICT GULFORD NO. 6</b>	<b>DRAWING NO. 2 OF 2</b>	<b>SCALE H:1"=100' V:1"=10'</b>
--	---	-----------------------------------	--	--	-----------------------------------	---

W. O. 6025-2

DECEMBER 3, 1971