

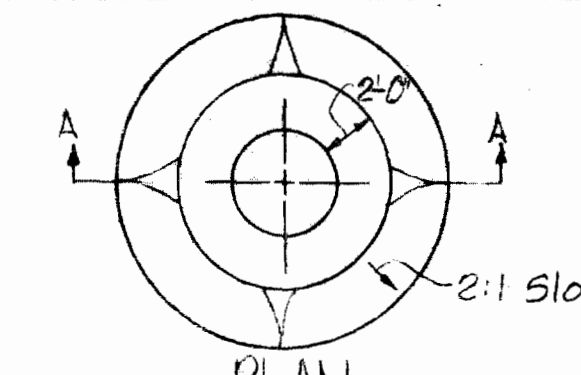
NOTE:
Poly Filter-X shall be as manufactured by Carthage Mills Inc. Erosion Control Division, 124 W. GGth Street Cincinnati, Ohio or approved equal.

Rip-Rap to consist of dense rocks of random shapes and sizes, resistant to the action of air and water, and suitable for bank protection. All rocks shall weigh a minimum of 150 pounds.

Maintain 1' minimum clearance between Rip-Rap and top of pipe

RIP-RAP DETAIL

Scale: 3/4" = 1'-0"



SECTION 'A-A' FILL AT MANHOLE

No Scale

NOTE:
FOR GENERAL NOTES SEE SPECIAL PROVISIONS

Property of RAY E. OGBURN, et al

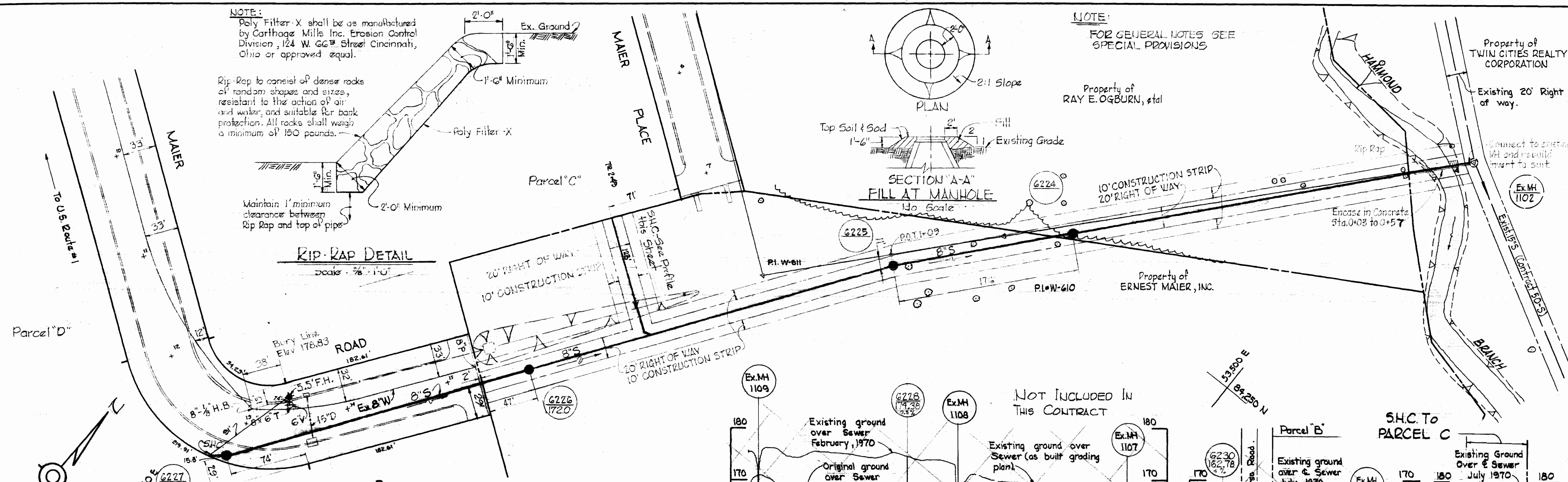
Property of ERNEST MAIER, INC.

Property of TWIN CITIES REALTY CORPORATION

Existing 20' Right of way.

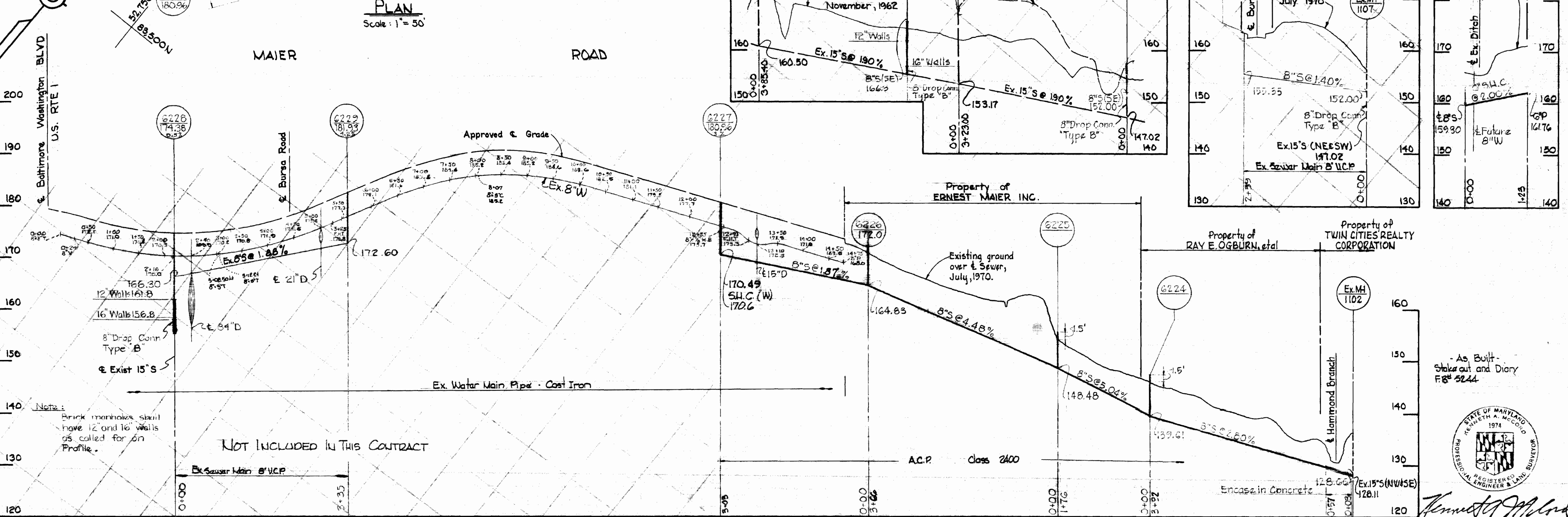
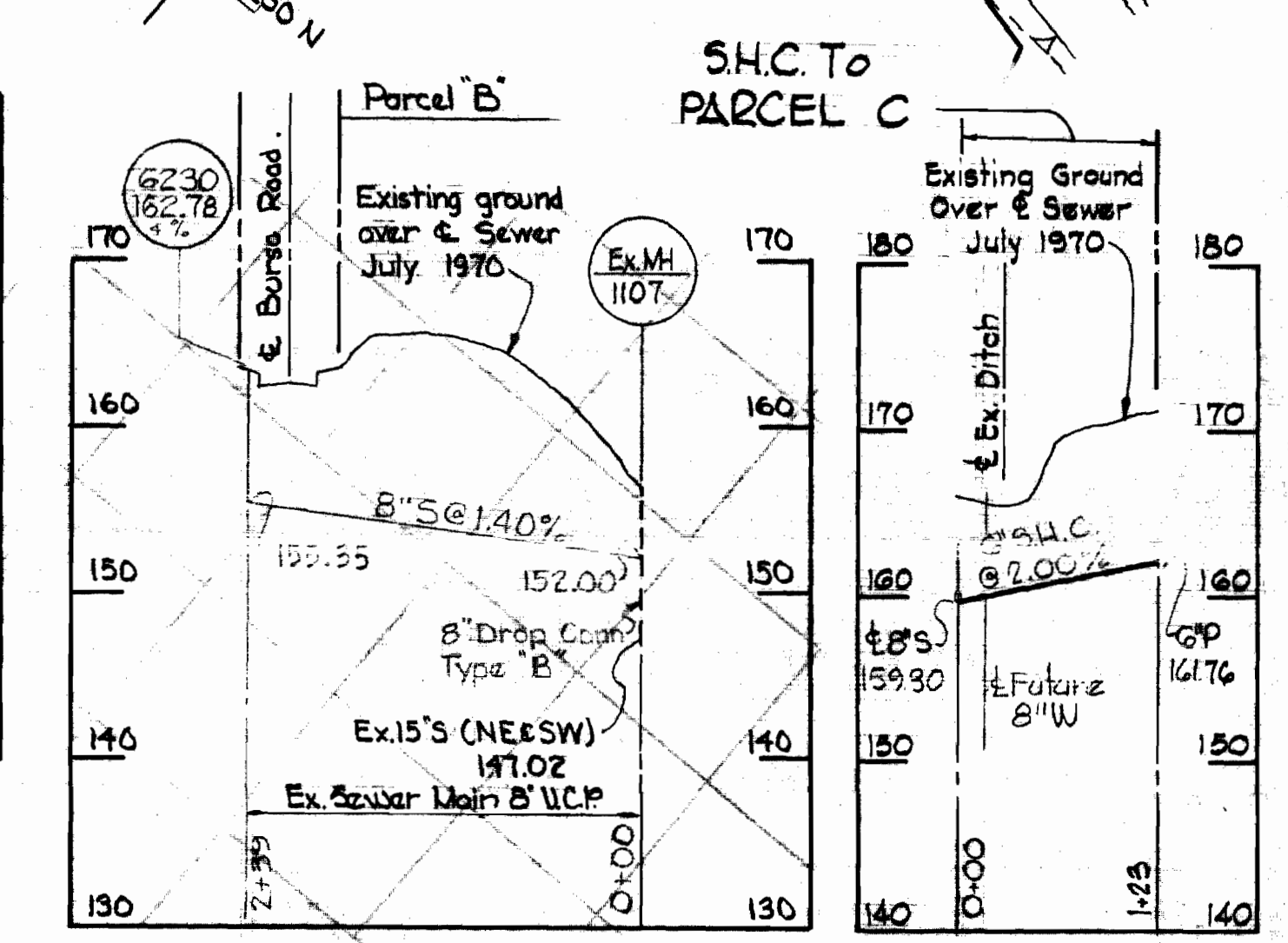
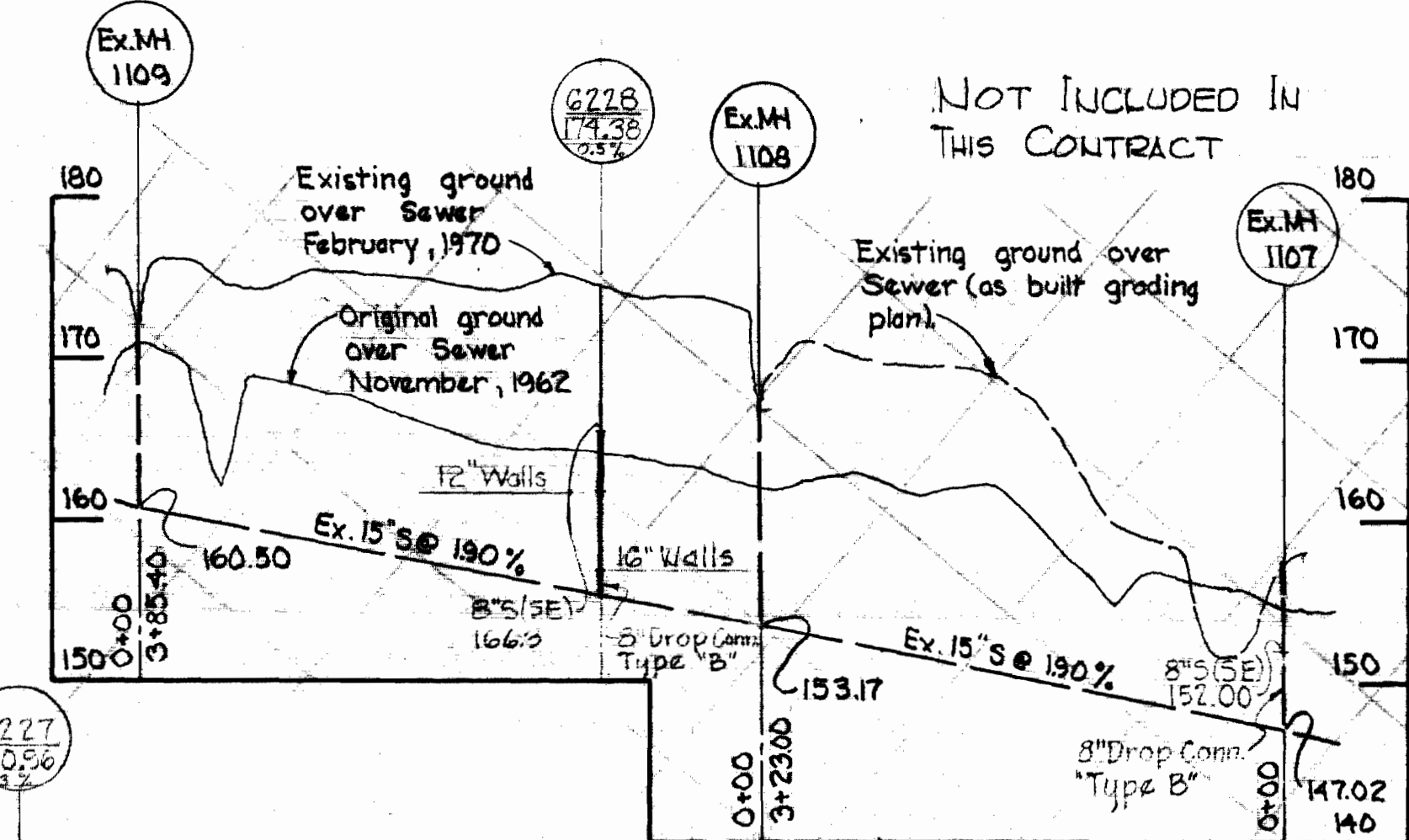
Connect to existing MH and re-align invert to suit

Ex. MH 1102



PLAN

Scale: 1" = 50'



PROFILE

Scale: H=1"=100' V=1"=10'

WHITMAN, REQUARDT & ASSOCIATES
ENGINEERS
1304 ST. PAUL ST.
BALTIMORE, MARYLAND

DEPARTMENT OF PUBLIC WORKS
HOWARD COUNTY, MARYLAND
8-25-70
DATE

CONTRACT NO. 382-A-S
W. O. F. L. B. E. T.
CHIEF - BUREAU OF WATER AND SEWER

PLAN AND PROFILE
OF WATER AND SEWER MAINS

ELECTION DISTRICT
GUILFORD NO. 6

DRAWING NO. 1 OF 1
SCALE AS SHOWN
43 NE 18-1
43 NE 18-3
43 NE 18-2
43 NE 18-1



Maier Industrial Park
Section 1
Contract No. 382A-S