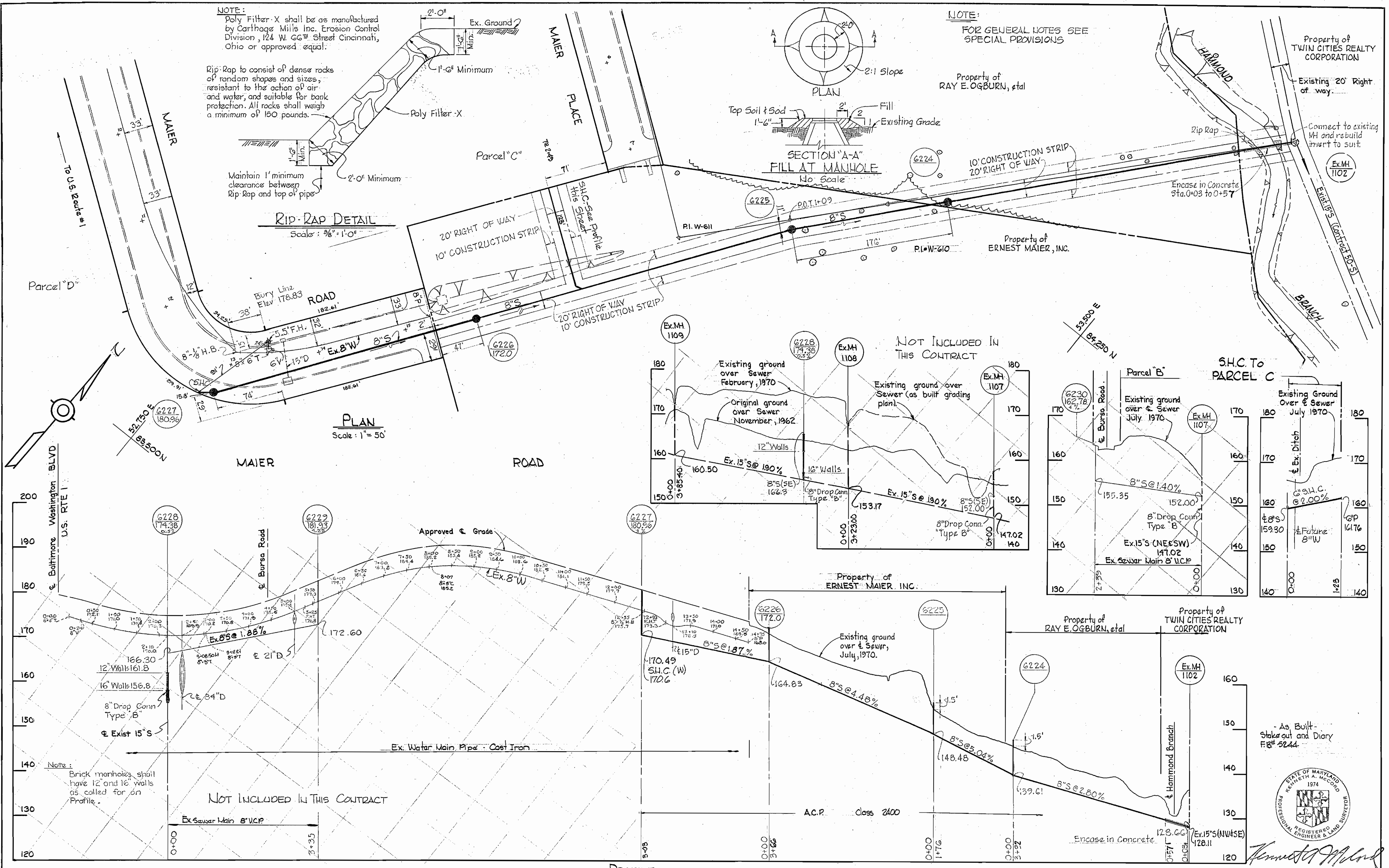


WS 382-A-S/1

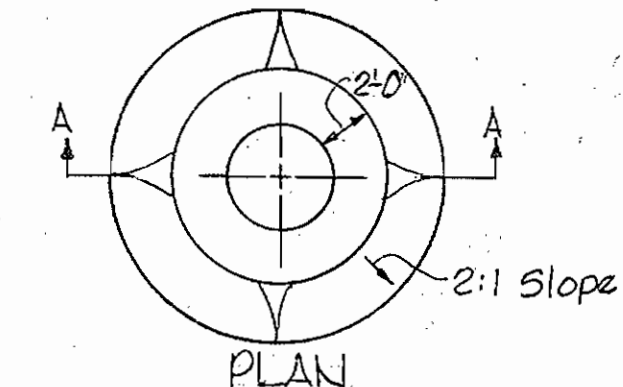


NOTE:  
Poly Filter-X shall be as manufactured by Carthage Mills Inc. Erosion Control Division, 124 W. 66<sup>th</sup> Street Cincinnati, Ohio or approved equal.

Rip-Rap to consist of dense rocks of random shapes and sizes, resistant to the action of air and water, and suitable for bank protection. All rocks shall weigh a minimum of 150 pounds.

Maintain 1' minimum clearance between Rip-Rap and top of pipe

**RIP-RAP DETAIL**  
Scale: 3/8" = 1'-0"



**SECTION "A-A" FILL AT MANHOLE**  
No Scale

NOTE:  
FOR GENERAL NOTES SEE SPECIAL PROVISIONS

Property of RAY E. OGBURN, et al

Property of ERNEST MAIER, INC.

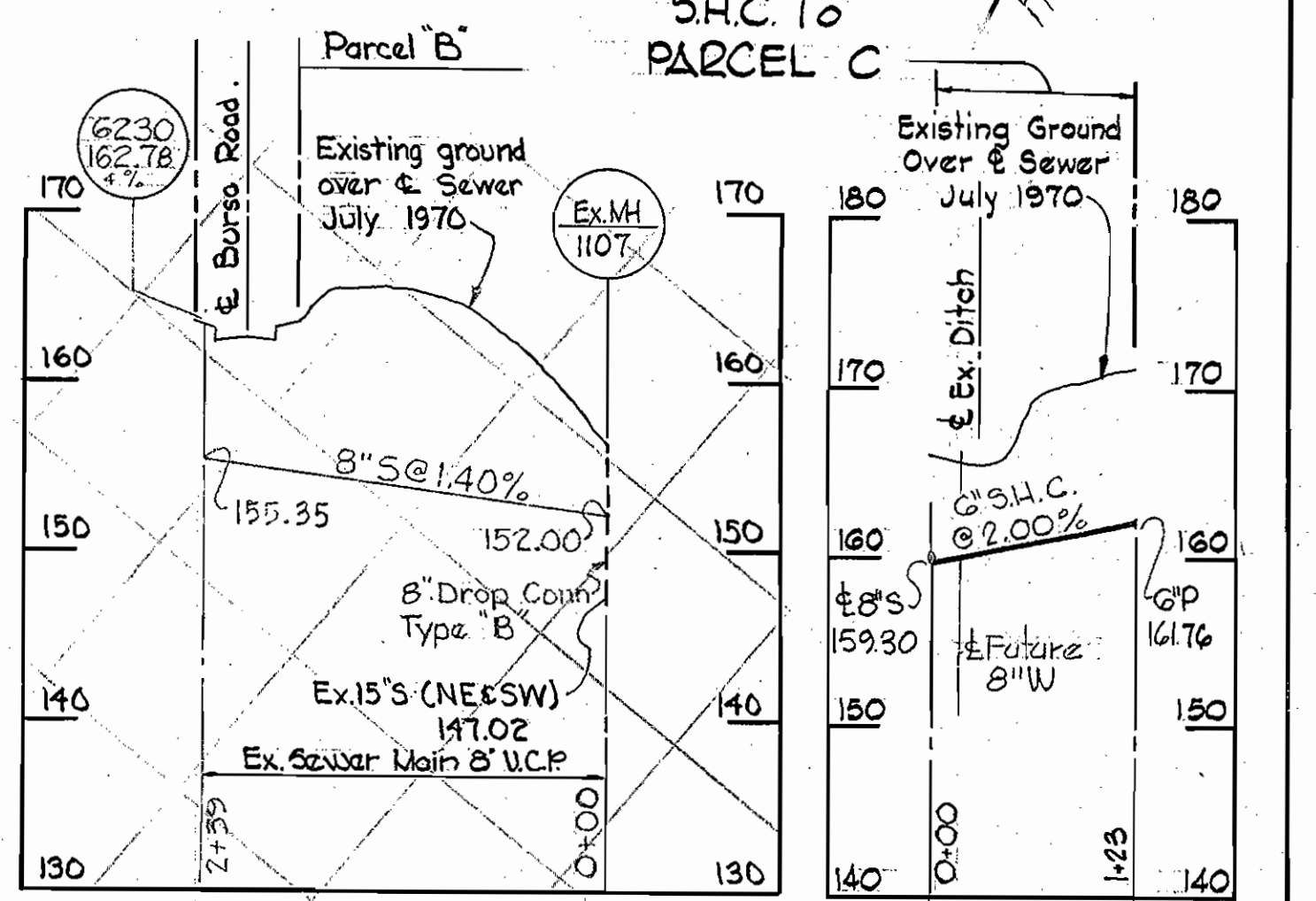
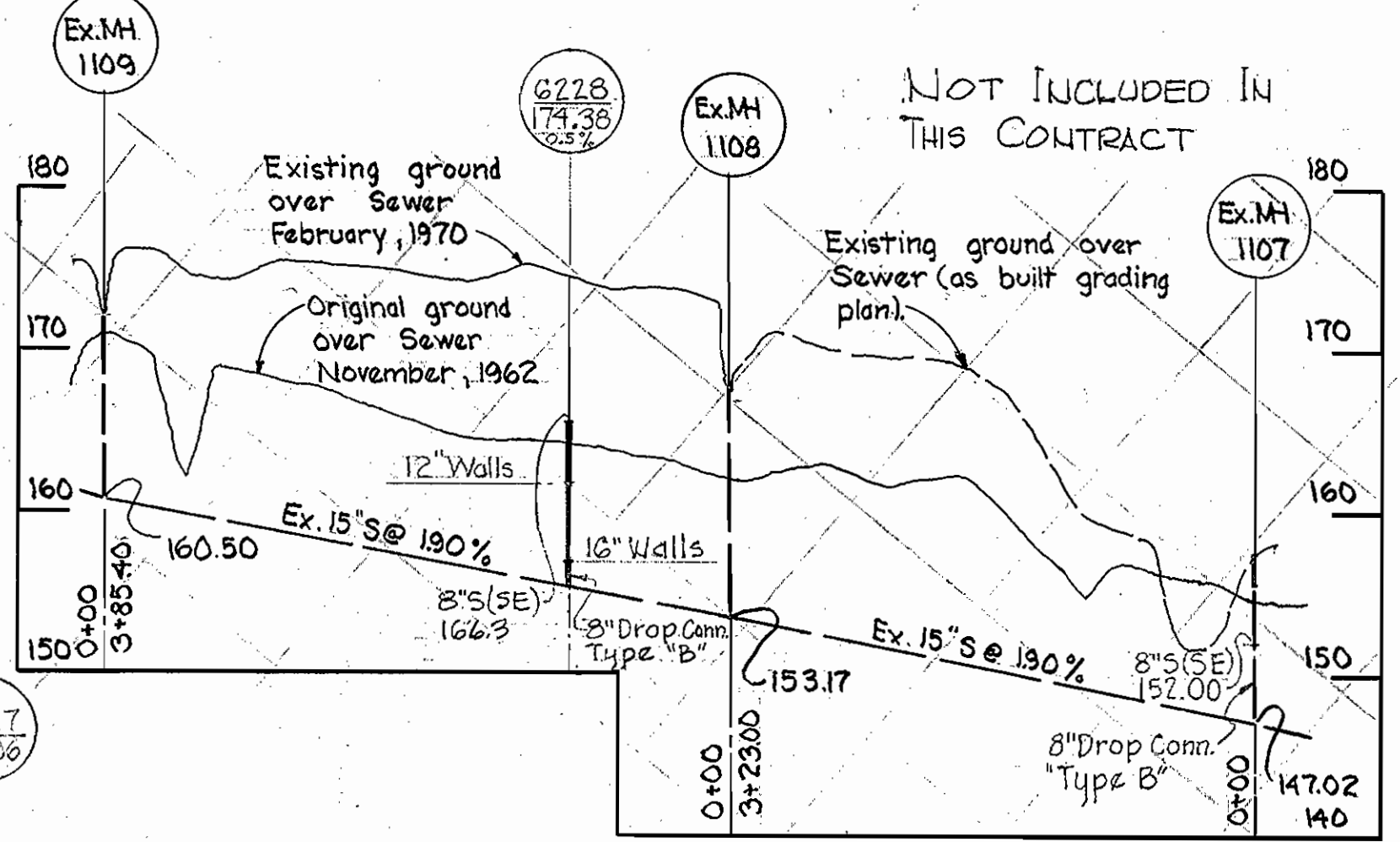
Property of TWIN CITIES REALTY CORPORATION

Existing 20' Right of way

Connect to existing MH and rebuild invert to suit

Encase in Concrete Sta. 0+03 to 0+57

NOT INCLUDED IN THIS CONTRACT



**PLAN**  
Scale: 1" = 50'

**PROFILE**  
H=1"=100'  
Scale: V=1"=10'

Note:  
Brick manholes shall have 12" and 16" walls as called for on Profile.

NOT INCLUDED IN THIS CONTRACT

- As Built - Stakeout and Diary FB# 5244



Maier Industrial Park  
Section 1  
Contract No. 382-A-S

WHITMAN, REQUARDT & ASSOCIATES ENGINEERS 1304 ST. PAUL ST. BALTIMORE, MARYLAND	DEPARTMENT OF PUBLIC WORKS HOWARD COUNTY, MARYLAND 8-25-70 DATE  CHIEF-BUREAU OF WATER AND SEWER	CONTRACT NO. 382-A-S	PLAN AND PROFILE OF WATER AND SEWER MAINS	ELECTION DISTRICT GUILFORD NO. 6	DRAWING NO. 1 OF 1 SCALE AS SHOWN 43 NE 18-4 43 NE 18-3 43 NE 18-2 43 NE 18-1
-----------------------------------------------------------------------------------------	-----------------------------------------------------------------------------------------------------------------	----------------------	----------------------------------------------	-------------------------------------	----------------------------------------------------------------------------------------------

W. O. 6024

April 23, 1975 AS BUILT F.B. 4751