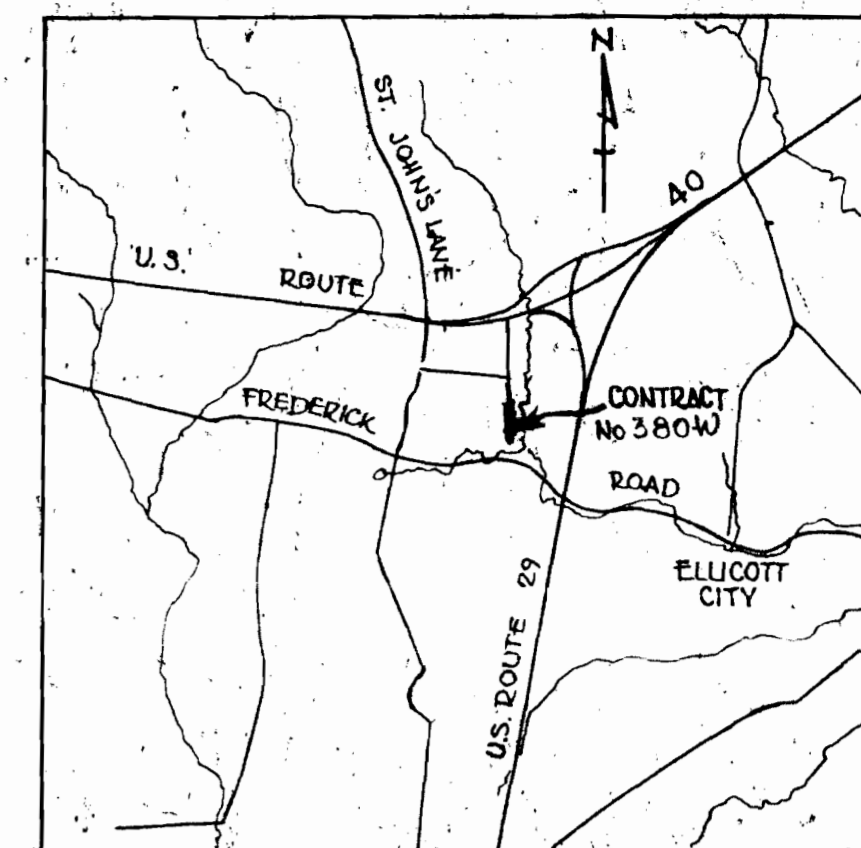


**- BENCH MARKS -**

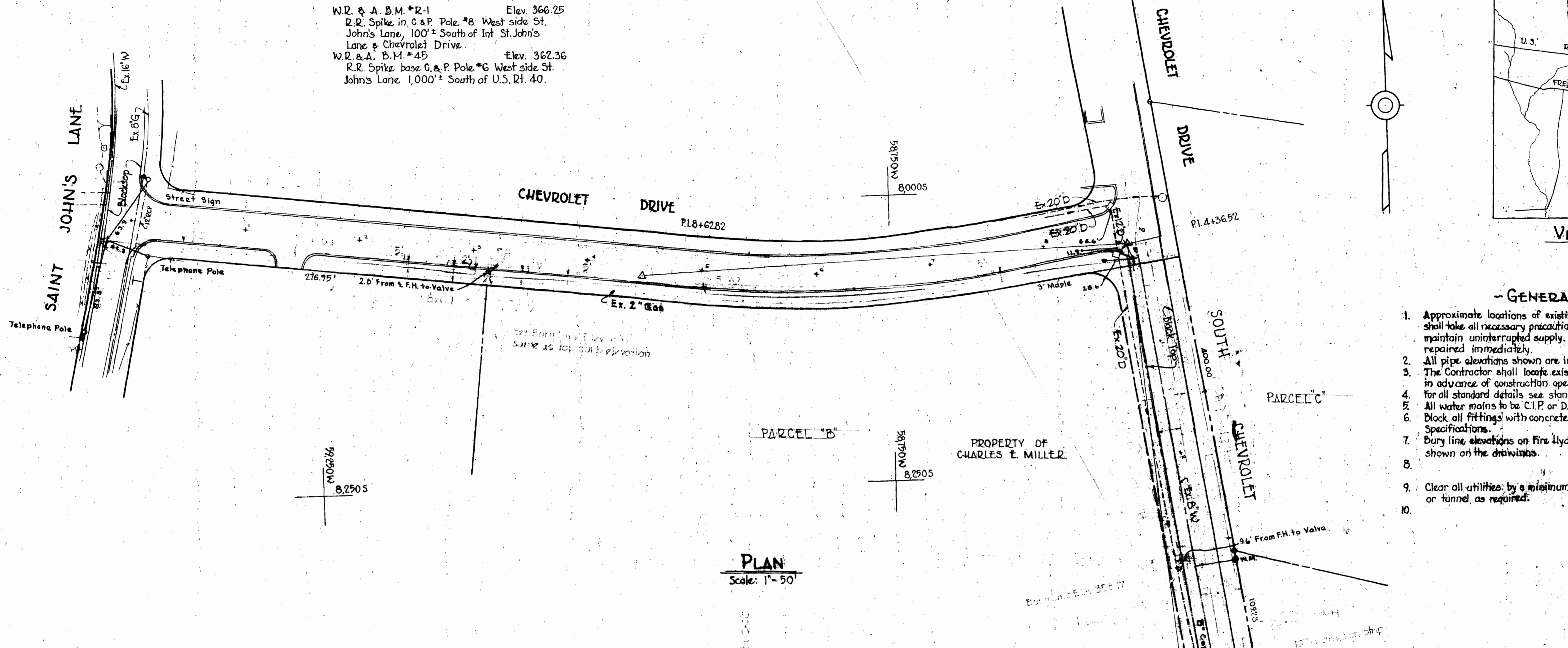
W.R. & A. B.M. \*R-1 Elev. 366.25  
 R.R. Spike in C & P. Pole #8 West side St. John's Lane, 100'± South of Int. St. John's Lane & Chevrolet Drive.  
 W.R. & A. B.M. \*45 Elev. 362.36  
 R.R. Spike base G & P. Pole #G West side St. John's Lane, 1,000'± South of U.S. Rt. 40.



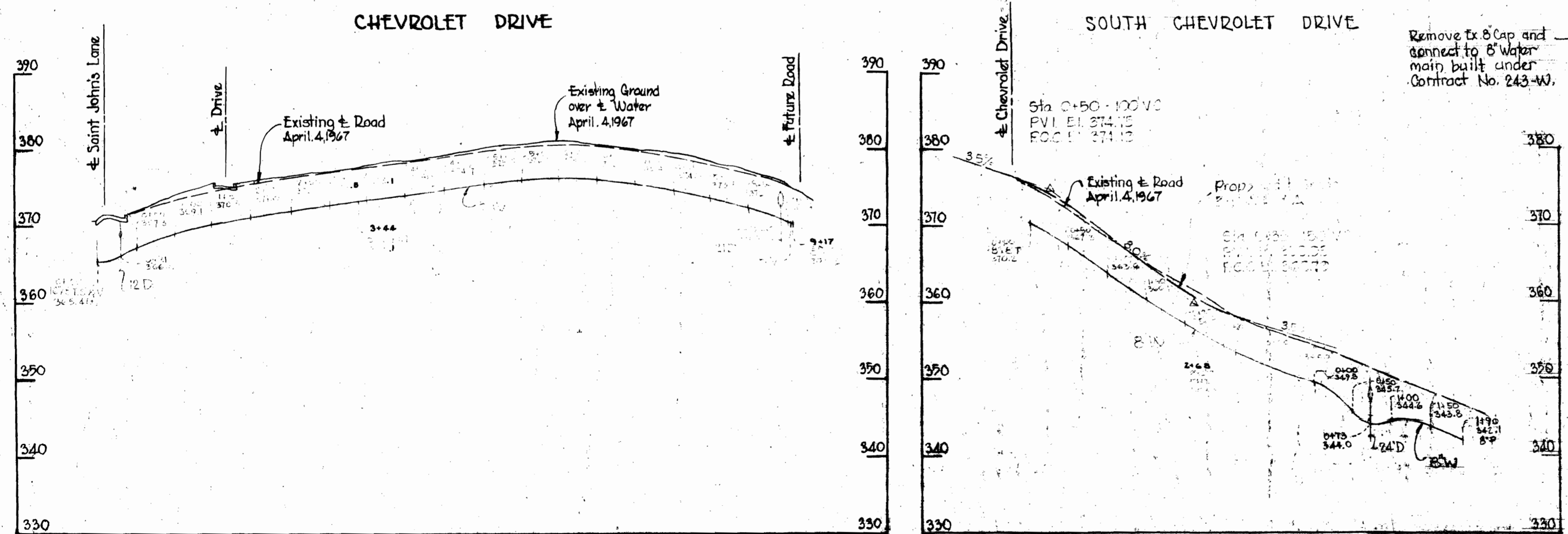
**VICINITY MAP**  
 Scale: 1" = 2640'

**- GENERAL NOTES -**

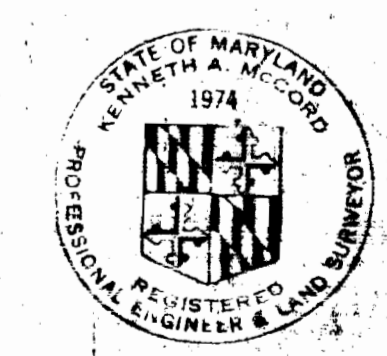
1. Approximate locations of existing mains are shown. The Contractor shall take all necessary precautions to protect the existing mains and maintain uninterrupted supply. Any damage incurred shall be repaired immediately.
2. All pipe elevations shown are invert elevations.
3. The Contractor shall locate existing utilities a minimum of two weeks in advance of construction operations in vicinity of utilities.
4. For all standard details see standards bound in Specifications.
5. All water mains to be C.I.P. or D.I.P. and have a minimum of 3 1/2' cover.
6. Block all fittings with concrete, see standard details bound in Specifications.
7. Bury line elevations on fire hydrants shall be set to the elevations shown on the drawings.
- 8.
9. Clear all utilities by a minimum of 6', clear all poles by 2'-0" minimum or tunnel as required.
- 10.



**PLAN**  
 Scale: 1" = 50'



**PROFILES**  
 Scale: Horiz. 1" = 100'  
 Vert. 1" = 10'



*Kenneth M. Lind*

AS BUILT According to C&P Sheet Contract No. 380-W

WHITMAN, REQUARDT & ASSOCIATES ENGINEERS 1304 ST. PAUL ST. BALTIMORE, MARYLAND	HOWARD COUNTY METROPOLITAN COMMISSION 7-13-70 DATE	CONTRACT NO. 380-W	PLAN AND PROFILE OF WATER MAINS	ELECTION DISTRICT ELLICOTT CITY #22	DRAWING NO. AS SHOWN SCALE AS SHOWN
---	--	--------------------	------------------------------------	--	--