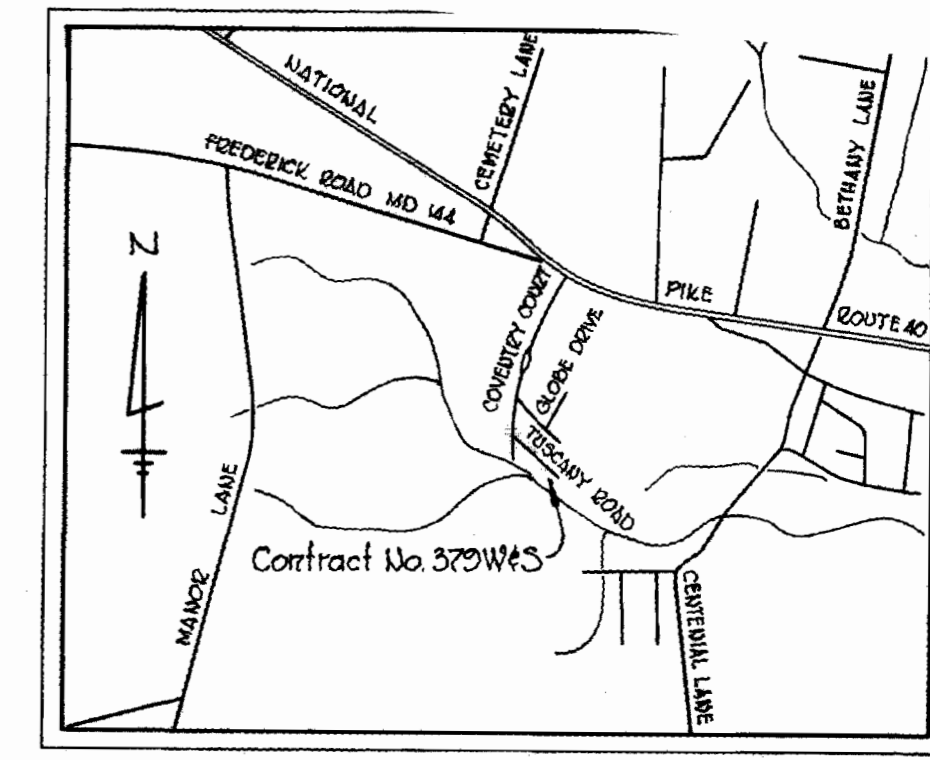
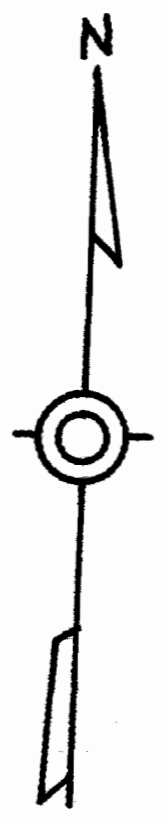
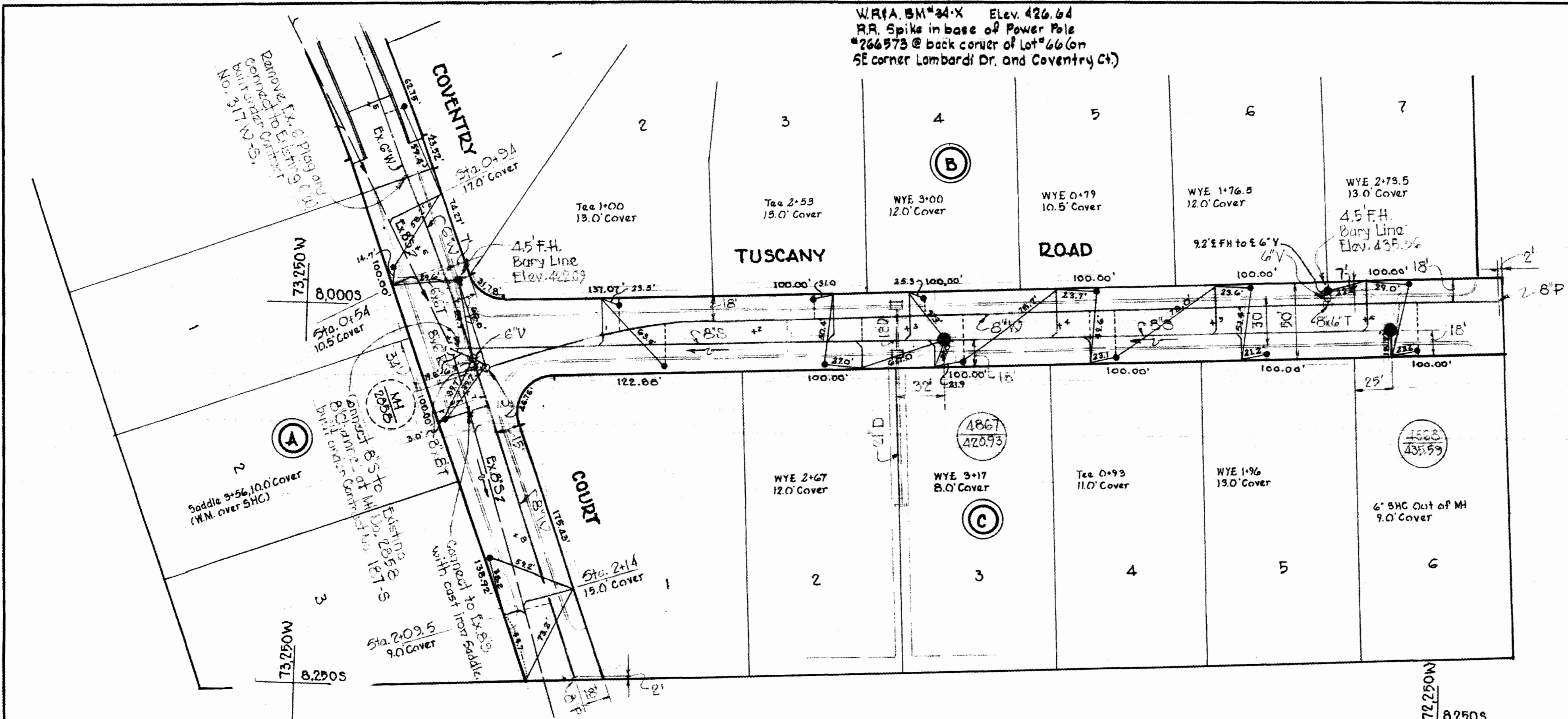


W.P.A. BM #34-X Elev. 426.64
 RR Spike in base of Power Pole
 #266573 @ back corner of Lot #66 (on
 SE corner Lombardi Dr. and Coventry Ct.)



VICINITY MAP
 Scale: 1" = 2000'

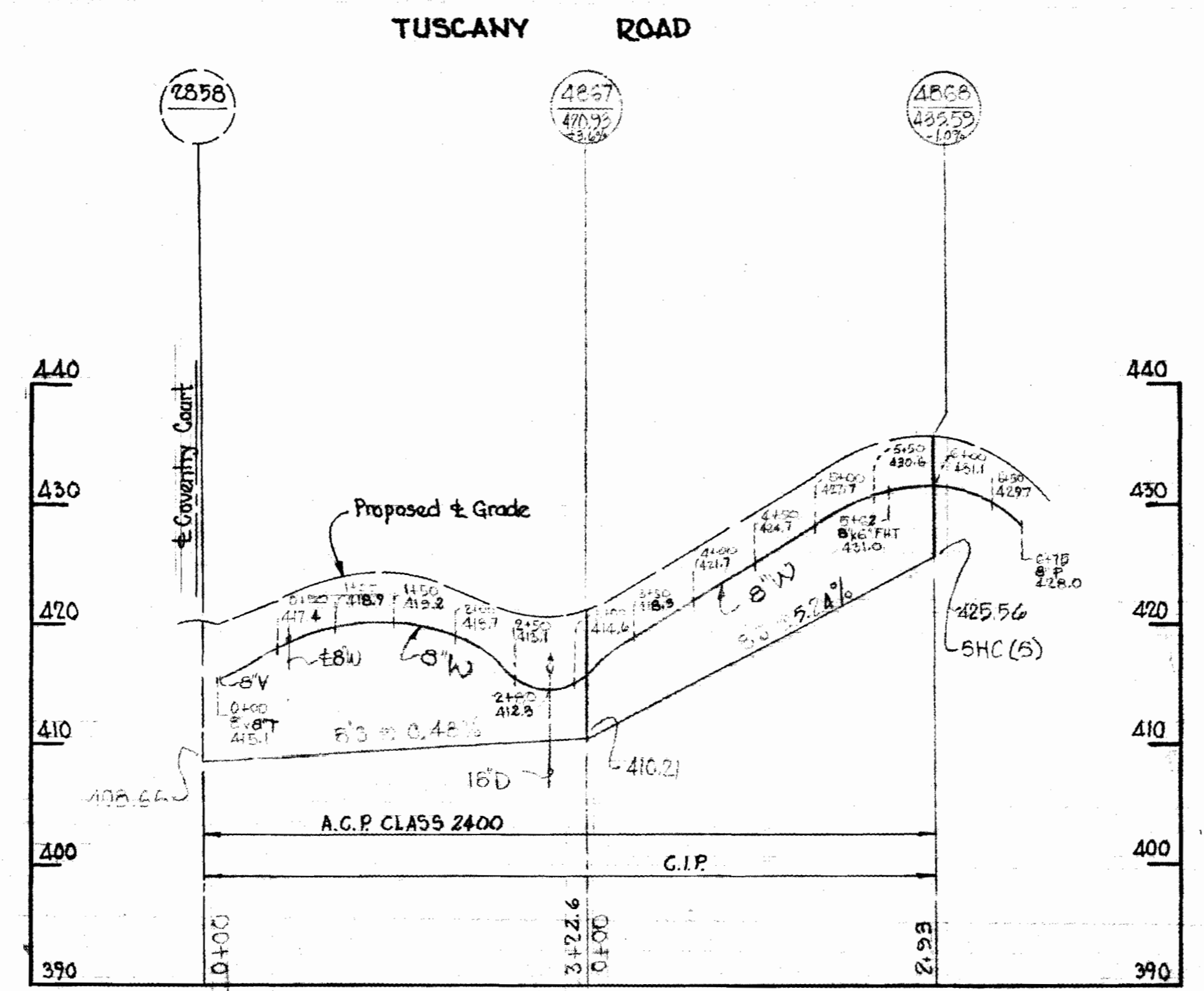
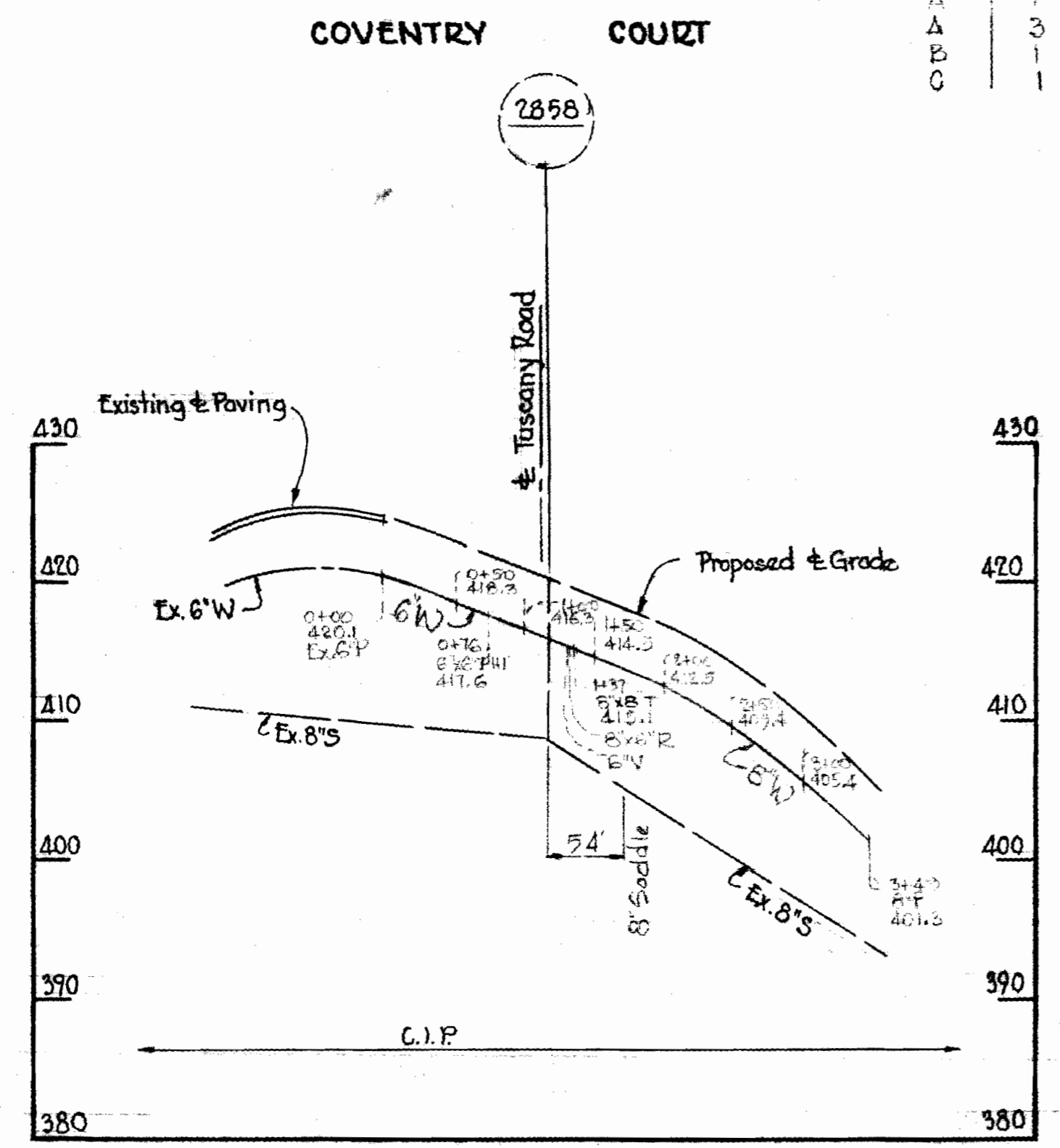
- GENERAL NOTES -

1. Approximate location of existing mains are shown. The Contractor shall take all necessary precautions to protect existing mains and services and maintain uninterrupted supply. Any damage incurred shall be repaired immediately.
2. All pipe elevations shown are invert elevations.
3. The Contractor shall locate existing utilities a minimum of two weeks in advance of construction operations in vicinity of utilities.
4. For all standard details see standards bound in specifications.
5. Clear utilities by a minimum of 6' clear all poles by 2'-0" minimum or tunnel as required.
6. The Contractor shall provide a joint in all sewer mains, within 2'-0" of exterior manhole walls.
7. All manholes shall be 4'-0" inside diameter.
8. All water mains to have a minimum of 3 1/2' cover unless otherwise noted.
9. Block all fittings with concrete, see standards bound in specifications.
10. Bury Line elevations on fire hydrants shall be set to the elevations shown on the drawings.
11. All fire hydrants shall be strapped to the tee and shall be buttressed with concrete in accordance with Standard Details.
12. All horizontal and vertical controls are based on Howard County Datum.

PLAN
 Scale: 1" = 50'

Note: Connect SHC to existing
 Y Branches placed under Contract
 No. 187-S as follows:

Block	Lot
A	3
B	1
C	1



PROFILES
 Scale: Horiz. 1" = 50'
 Vert. 1" = 10'

QUANTITIES	
ITEM	QUANTITY
6" Water Main	150'
8" Water Main	890'
Fire Hydrant	1
8" Sewer Main	620'

Diary # Stakeout F.B. #5025



Kenneth A. McCord

Pine Orchard Meadows, Section 5
 Contract Number 379-W&S

WHITMAN, REQUARDT & ASSOCIATES
 ENGINEERS
 1304 ST. PAUL ST.
 ANNAPOLIS, MARYLAND

DEPARTMENT OF PUBLIC WORKS
 HOWARD COUNTY, MARYLAND
 DATE: 6-16-70
 W. O. Palumbo
 CHIEF - BUREAU OF WATER AND SEWER

CONTRACT NO. 379-W&S

PLAN & PROFILES OF
 WATER & SEWER MAINS

ELECTION DISTRICT
 ELLICOTT CITY NO. 2

DRAWING NO. 1 OF 1
 SCALE AS SHOWN

1/S-M-67C