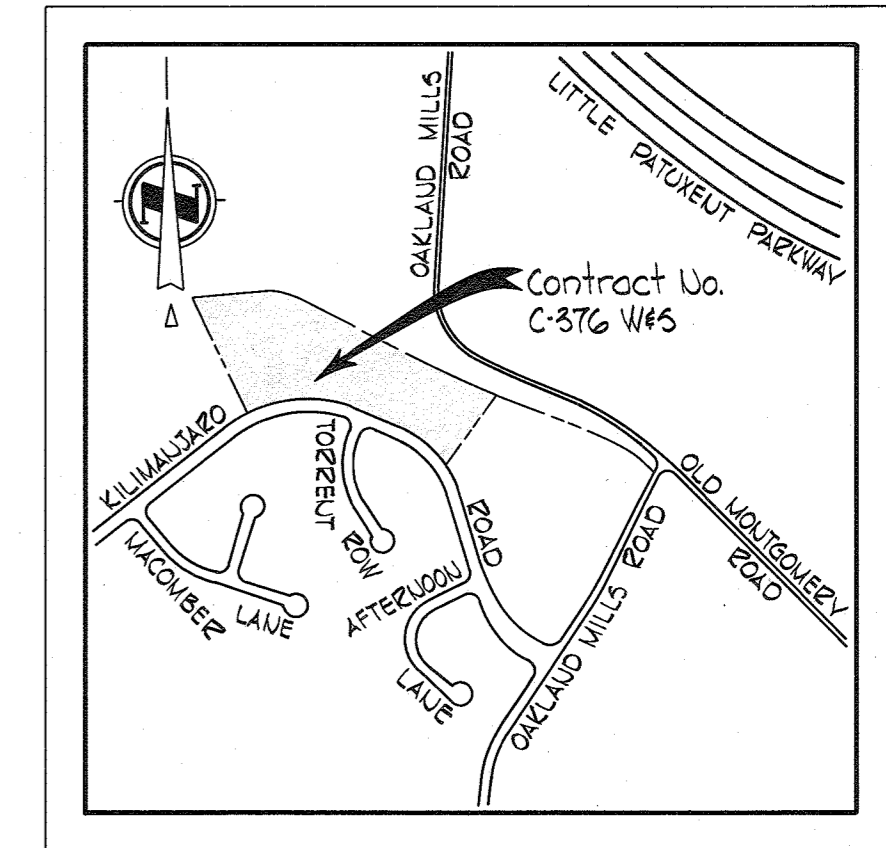


NOTE:
 ALL SEWER PIPE VCPX.
 ALL WATER PIPE CAST IROU.
 ALL SHC'S ARE Y'S.



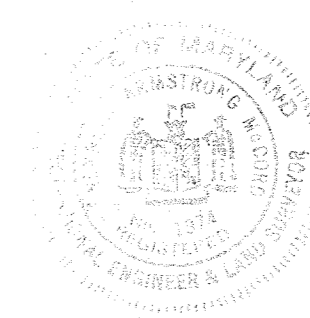
VICINITY MAP
 Scale: 1"=800'

Howard Homes
 Section 2, Area 4
 Parcel 1F

QUANTITIES	
8" Sewer	1850
3" Water	440'
4" Water	1260'
Fire Hydrants	2

GENERAL NOTES

1. Approximate location of existing mains are shown. The Contractor shall take all necessary precautions to protect existing mains and services and maintain uninterrupted supply. Any damage incurred shall be repaired immediately.
2. All pipe elevations shown are invert elevations.
3. The Contractor shall locate existing utilities a minimum of two weeks in advance of construction operations in vicinity of utilities.
4. For all standard details see standards bound in Specifications.
5. All horizontal and vertical controls are based on Maryland State Datum.
6. Clear all utilities by a minimum of 6'; Clear all poles by a minimum of 2'-0" or tunnel as required.
7. All water mains are to have a minimum of 3 1/2' cover.
8. Block all fittings with concrete, see standards bound in Specifications.
9. Bury Line elevations on fire hydrants shall be set to elevations shown on drawings or as directed by the Engineer in the field.
10. All fire hydrants shall be strapped and buttressed in accordance with Standard Details.
11. Cost of strapping fire hydrants and valves to trees to be included in unit price bid for furnishing and laying of water mains.
12. All W.U.C. to be 1" in diameter unless otherwise noted.
13. The Contractor shall provide a joint in all sewer mains within 2'-0" of exterior manhole walls.
14. All manholes shall be 4'-0" inside diameter.

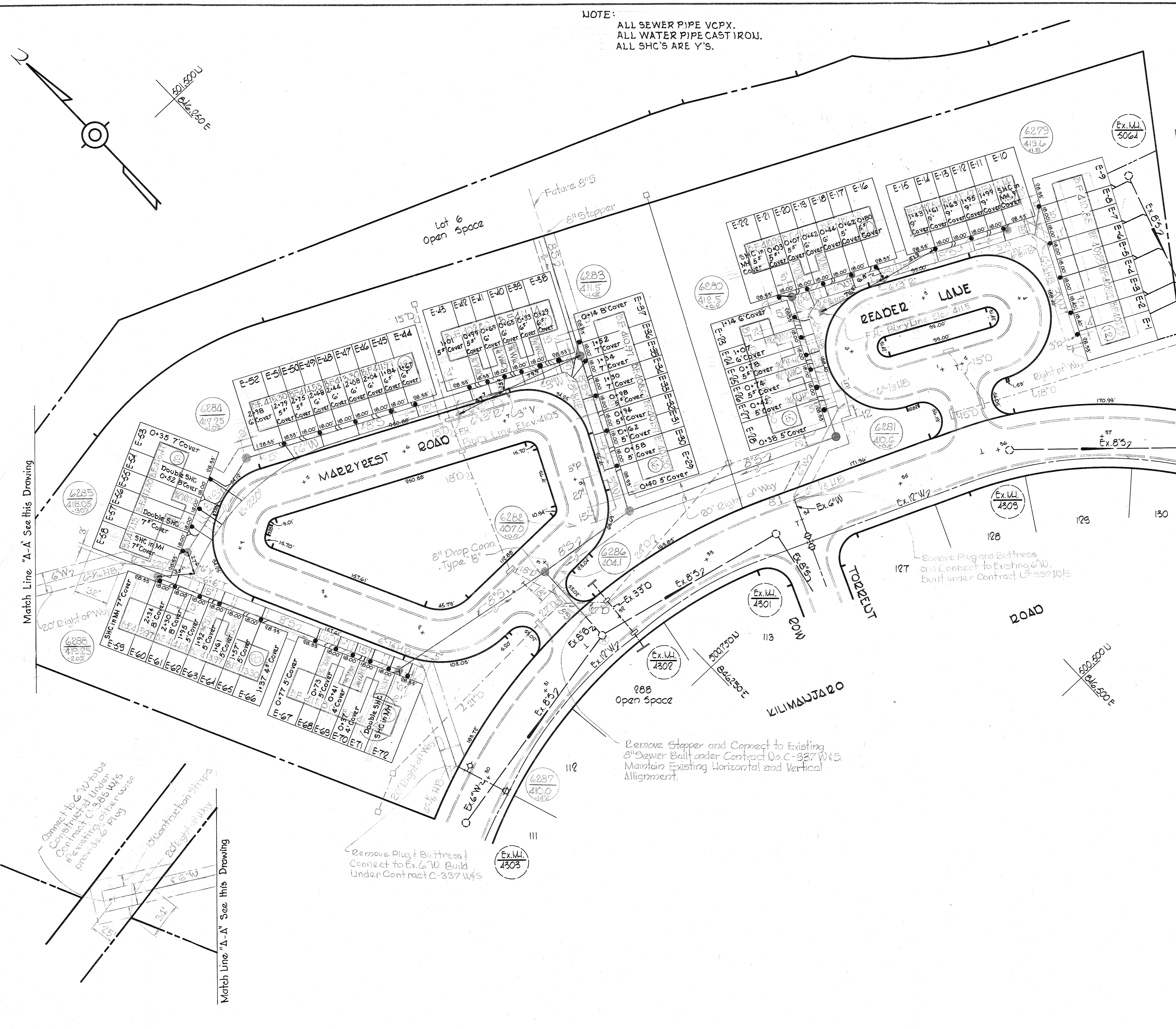


DIARY: FB*4831, STAKEOUT: FB*4839

Village of Oakland Mills
 Section 2, Area 4
 Howard Homes IV
 Contract No. C-376-W&S

DRAWING NO. 1 OF 2
 SCALE 1"=50'

DECEMBER 3, 1971



WHITMAN, REQUARDT & ASSOCIATES
 ENGINEERS
 1304 ST. PAUL ST.
 BALTIMORE, MARYLAND

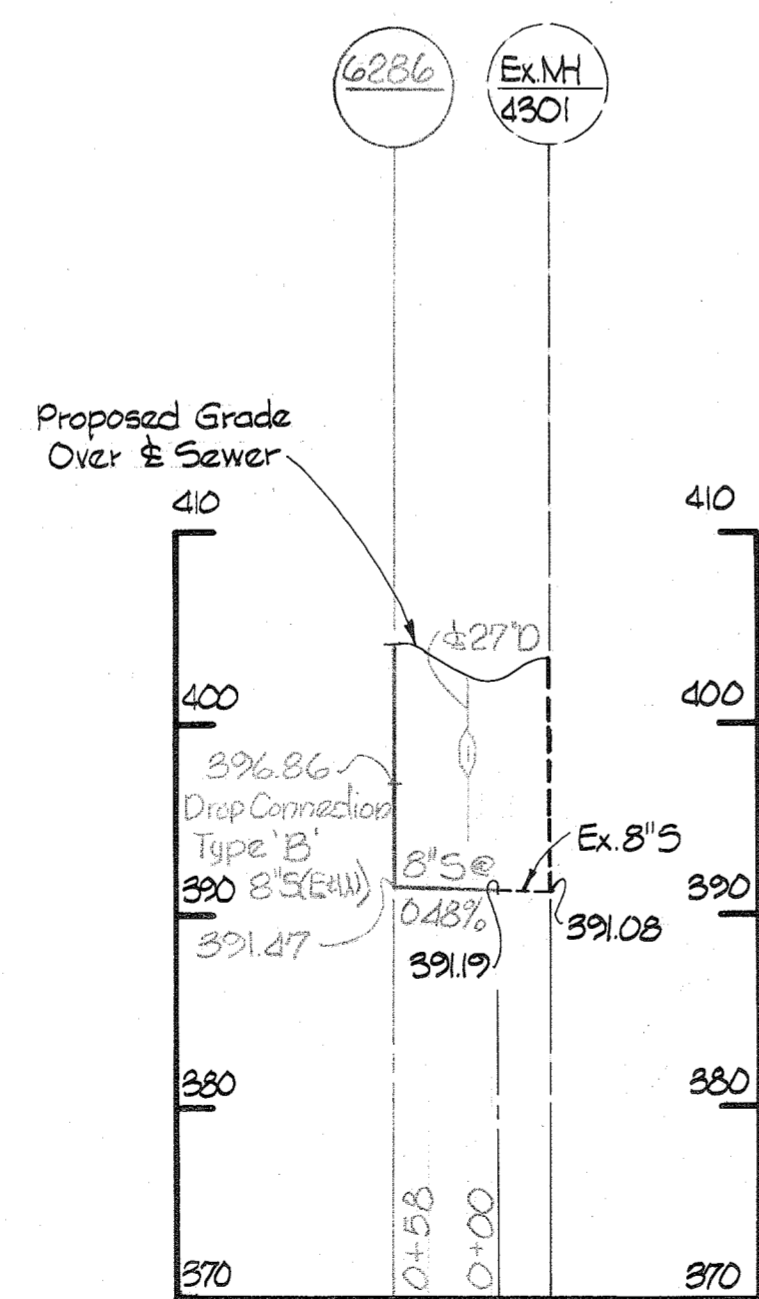
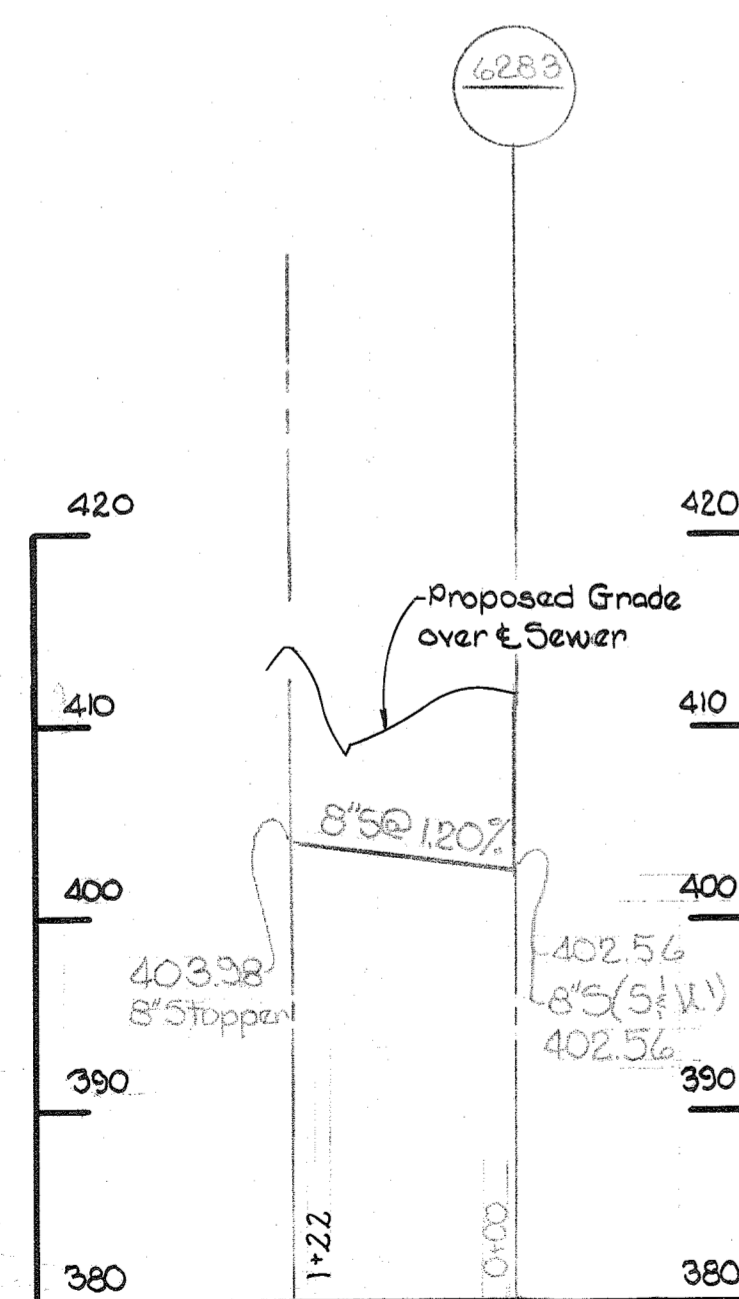
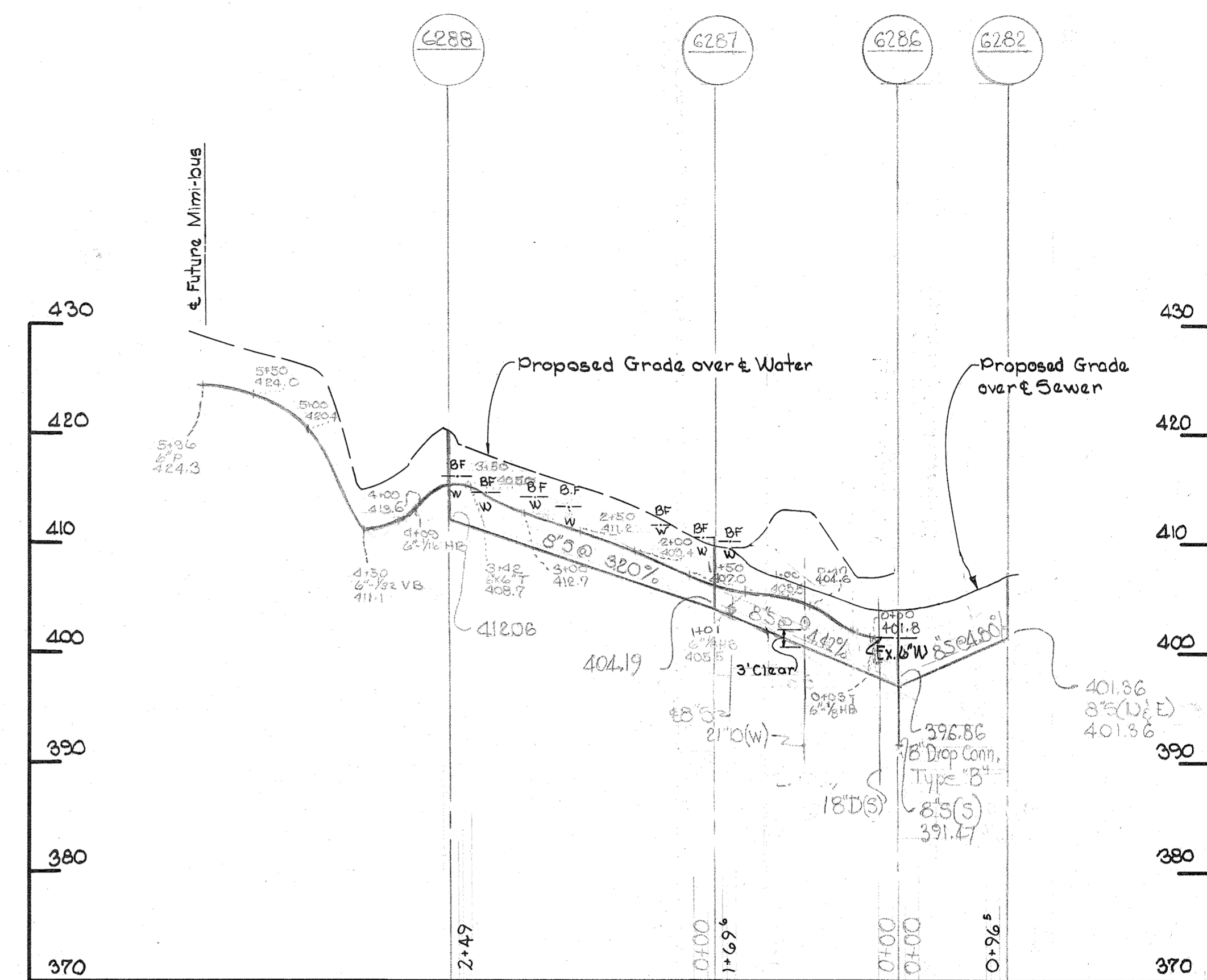
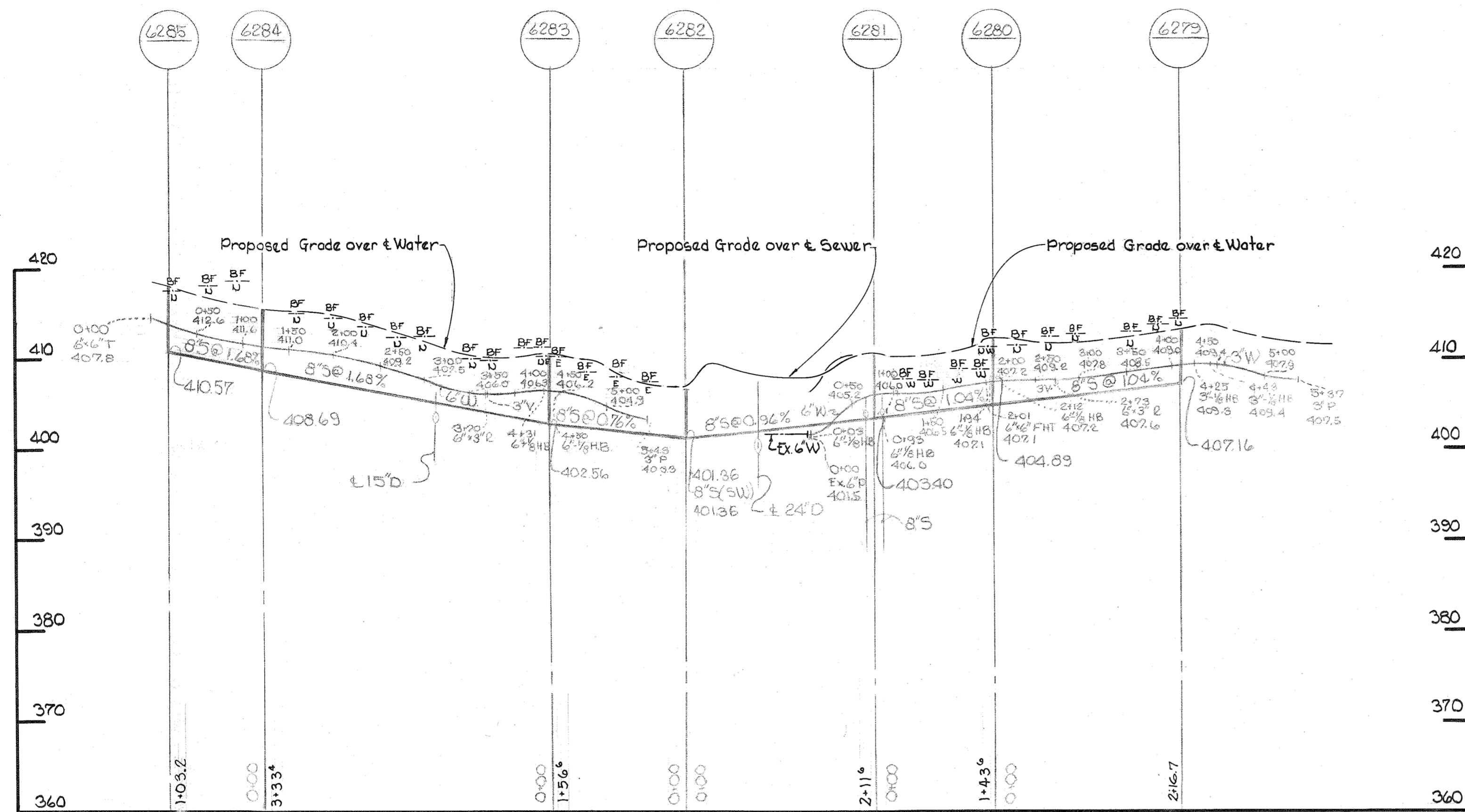
DEPARTMENT OF PUBLIC WORKS
 HOWARD COUNTY, MARYLAND
 9-8-70
 DATE
 ed O Fallick
 CHIEF-BUREAU OF WATER AND SEWER

CONTRACT NO. C-376W&S

PLAN OF
 WATER & SEWER MAINS

COLUMBIA
 VILLAGE OF OAKLAND MILLS
 ELECTION DISTRICT GUILFORD No. 6

WS 376-W&S/1



Howard Miller

Village of Oakland Mills
 Section 2, Area 4
 Howard Home IV
 Contract No. 376-W&S

WHITMAN, REQUARDT & ASSOCIATES
 ENGINEERS
 1304 ST. PAUL ST.
 BALTIMORE, MARYLAND

DEPARTMENT OF PUBLIC WORKS
 HOWARD COUNTY, MARYLAND
 9-8-70
 DATE

CONTRACT NO. C-376W&S

PROFILE OF
 WATER & SEWER MAINS

COLUMBIA
 VILLAGE OF OAKLAND MILLS
 ELECTION DISTRICT GUILFORD No. 6

DRAWING NO. 2	SCALE H:1"=100'
OF 2	V:1"=10'

DECEMBER 3, 1971

WS 376-W&S/2

W. O. 6023-2