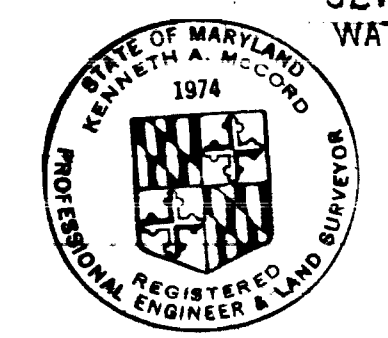


**CONTRACT NO C-374 W-S**  
**WATER AND SEWER EXTENSIONS**  
**HOWARD COUNTY MARYLAND**  
**DEPARTMENT OF PUBLIC WORKS**

QUANTITIES	
10" Sewer	1,250'
8" Sewer	14,700'
12" Water	2,460'
8" Water	3,700'
6" Water	4,460'
3" Water	1,640'
Fire Hydrants	14

AS BUILT  
 STAKE OUT F.B. #492, #5047  
 DIARY F.B. #4991, #5023, #5050  
 SEWER PIPE - A.C.P.  
 WATER PIPE - C.I.P.



*Kenneth A. McCord*  
 Village of Longreach  
 Jaffer's Hill  
 Section I - Area II  
 Contract No. C-374 W-S

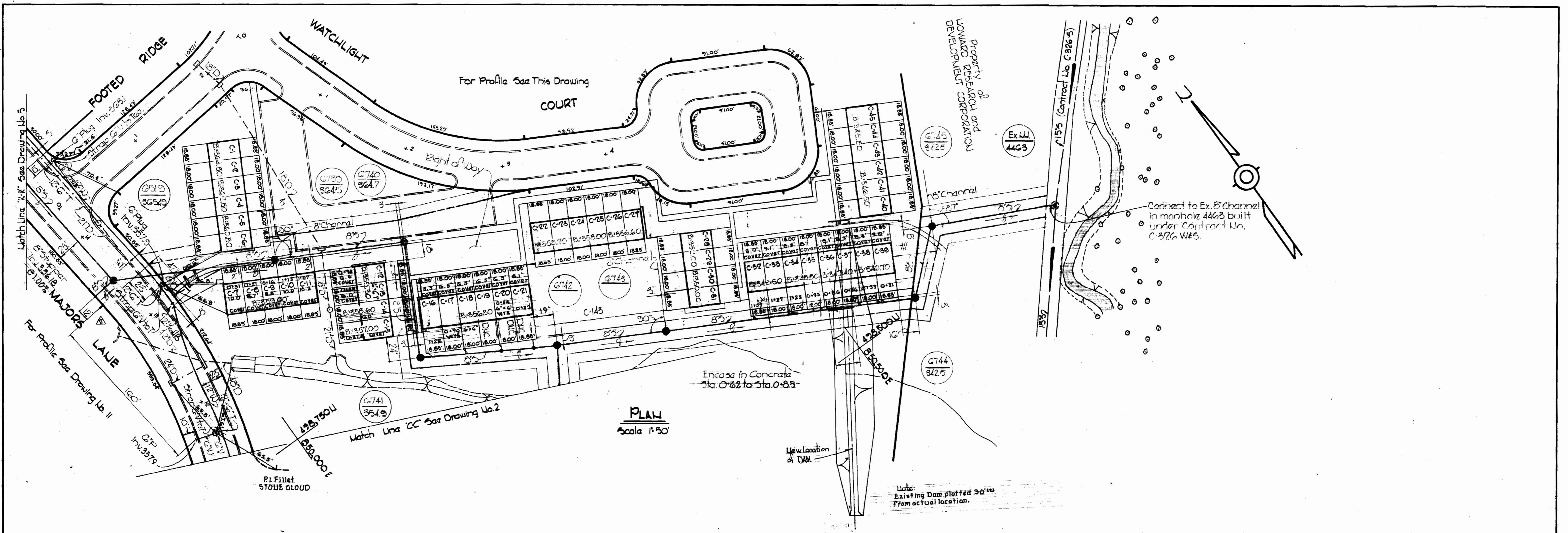
WS 374-W & S/1

WHITMAN, REQUARDT & ASSOCIATES ENGINEERS 1304 ST. PAUL ST. BALTIMORE, MARYLAND	DEPARTMENT OF PUBLIC WORKS HOWARD COUNTY, MARYLAND 12-21-70 DATE <i>W. O. Falbert</i> CHIEF - BUREAU OF WATER AND SEWER	CONTRACT NO. C-374 W-S	LOCATION MAP	COLUMBIA VILLAGE OF LONGREACH ELECTION DISTRICT GUILFORD No. 6	DRAWING NO. 1 OF 12 SCALE AS SHOWN
---	--	------------------------	--------------	--	---------------------------------------

LIO	DATE	REVISION
△	6-14-71	Revised S Sewer Alignment and showed CUL-de-sac in Stone Cloud

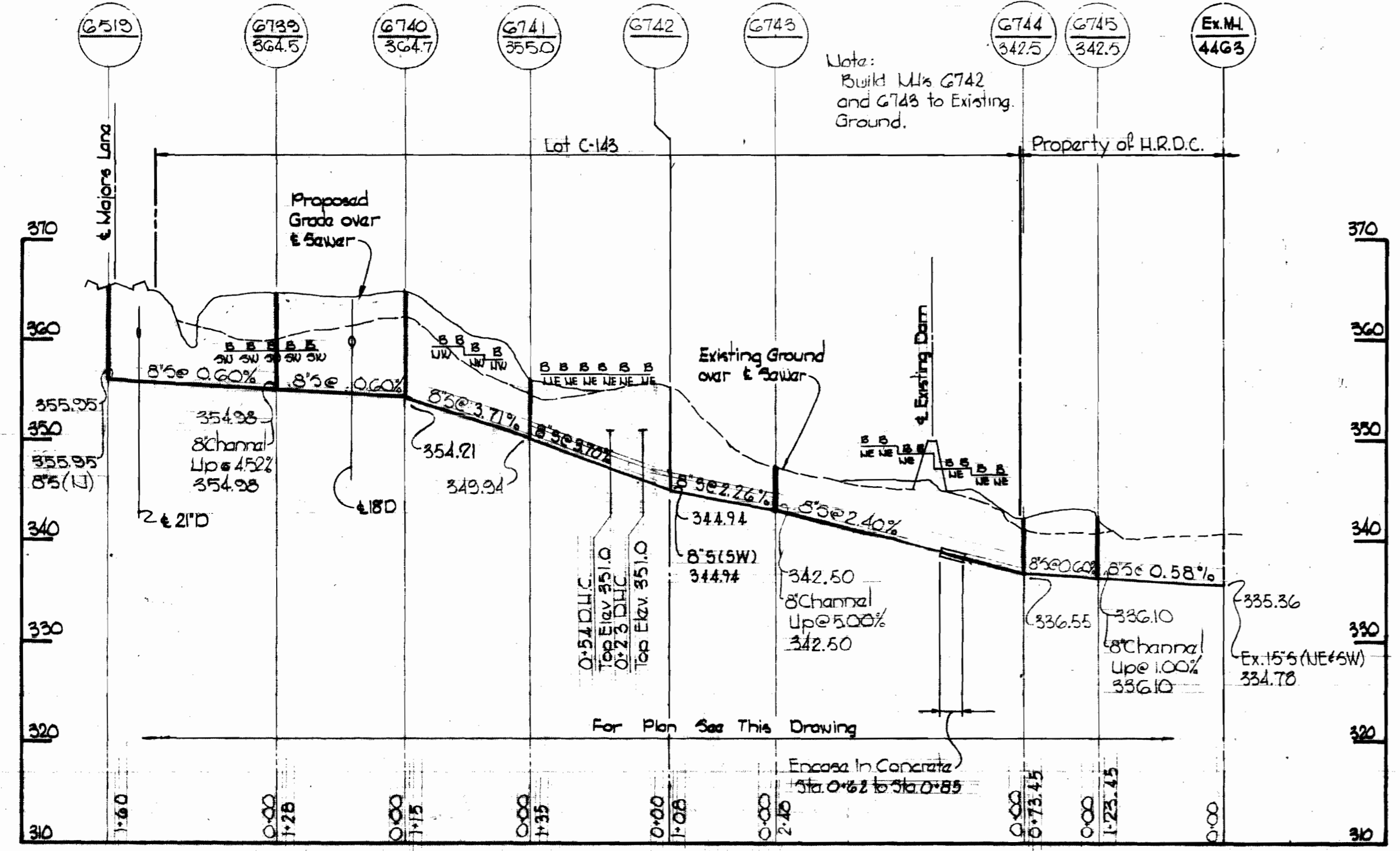


<b>WHITMAN, REQUARDT &amp; ASSOCIATES</b> ENGINEERS 1304 ST. PAUL ST. BALTIMORE, MARYLAND	<b>DEPARTMENT OF PUBLIC WORKS</b> HOWARD COUNTY, MARYLAND 12-21-70 <i>W.O. P. [Signature]</i> CHIEF BUREAU OF WATER AND SEWER	<b>CONTRACT NO. C-374 WBS</b>	<b>PLAN OF</b> <b>WATER &amp; SEWER MAINS</b>	<b>COLUMBIA</b> <b>VILLAGE OF LONGREACH</b> <b>ELECTION DISTRICT GUILFORD No. 6</b>	<b>DRAWING NO. 2 OF 12</b> <b>SCALE 1"=50'</b>
--	---	-------------------------------	--	---	---



PLAN  
Scale 1"=50'

Note:  
Existing Dam plotted 30' from actual location.



PROFILES Scale: Horiz. 1"=100' Vert. 1"=10'

Note:  
Build U/L's G742 and G743 to Existing Ground.

No.	Date	REVISIONS
6-14-71		Revised location of horizontal bend and added 2 1/2" @ 1% to 12" Water in Major's Lane. Deleted 8" Sewer between M/S G719 and G720.
6-14-71		Add Street 2A



*Kenneth A. McCord*

Village of Longreach  
Jeffers Hill  
Section I - Area II  
Contract No. C-374 W8

<b>WHITMAN, REQUARDT &amp; ASSOCIATES</b> ENGINEERS 1304 ST. PAUL ST. BALTIMORE, MARYLAND	<b>DEPARTMENT OF PUBLIC WORKS</b> HOWARD COUNTY, MARYLAND 674-71 DATE	<b>CONTRACT NO. C-374W8S</b>	<b>PLAN &amp; PROFILE OF SEWER MAINS</b>	<b>COLUMBIA VILLAGE OF LONGREACH ELECTION DISTRICT GUILFORD No. 6</b>	<b>DRAWING NO. 2-A OF 12</b>	<b>SCALE AS SHOWN</b>
					<b>DATE</b>	<b>CHIEF - BUREAU OF WATER AND SEWER</b>

For General Notes  
See Drawing No. 8

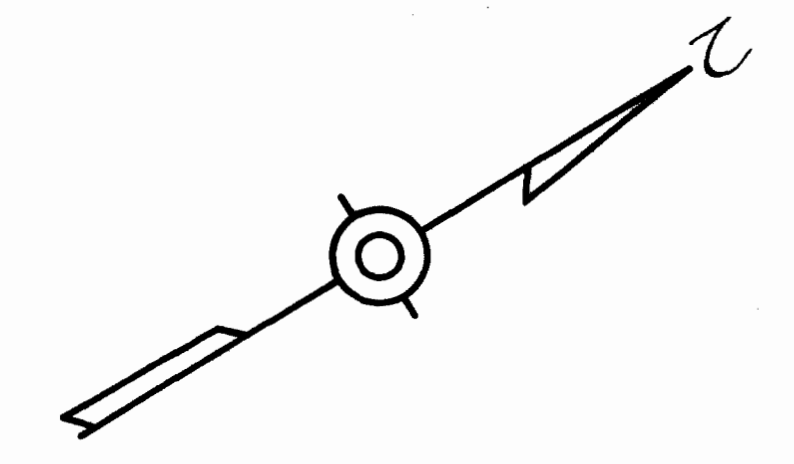


*Kenneth A. McLeod*

Village of Longreach  
Jaffers Hill  
Section I - Area II  
Contract No. C-374 W#6

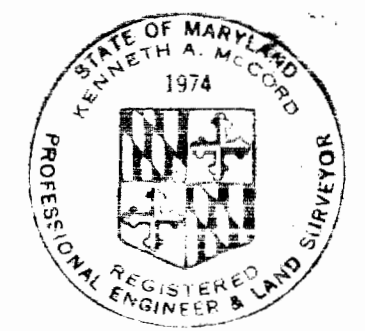
<b>WHITMAN, REQUARDT &amp; ASSOCIATES</b> ENGINEERS 1304 ST. PAUL ST. BALTIMORE, MARYLAND	<b>DEPARTMENT OF PUBLIC WORKS</b> HOWARD COUNTY, MARYLAND 12-21-70 <i>W. O. Robert</i> CHIEF - BUREAU OF WATER AND SEWER	<b>CONTRACT NO. C-374 W#6</b>	<b>PLAN OF</b> <b>WATER &amp; SEWER MAINS</b>	<b>COLUMBIA</b> <b>VILLAGE OF LONGREACH</b> <b>ELECTION DISTRICT GUILFORD No. 6</b>	<b>DRAWING NO. 3 OF 12</b> <b>SCALE 1" = 50'</b>
--	--	-------------------------------	--	---	---

For General Notes See Drawing No. 8



For Continuation See Drawing No. 6

For Continuation See Drawing No. 6



*Kenneth A. Milrod*

Village of Longreach  
Jalkins Hill  
Section I - Area II  
Contract No. C-374 W85

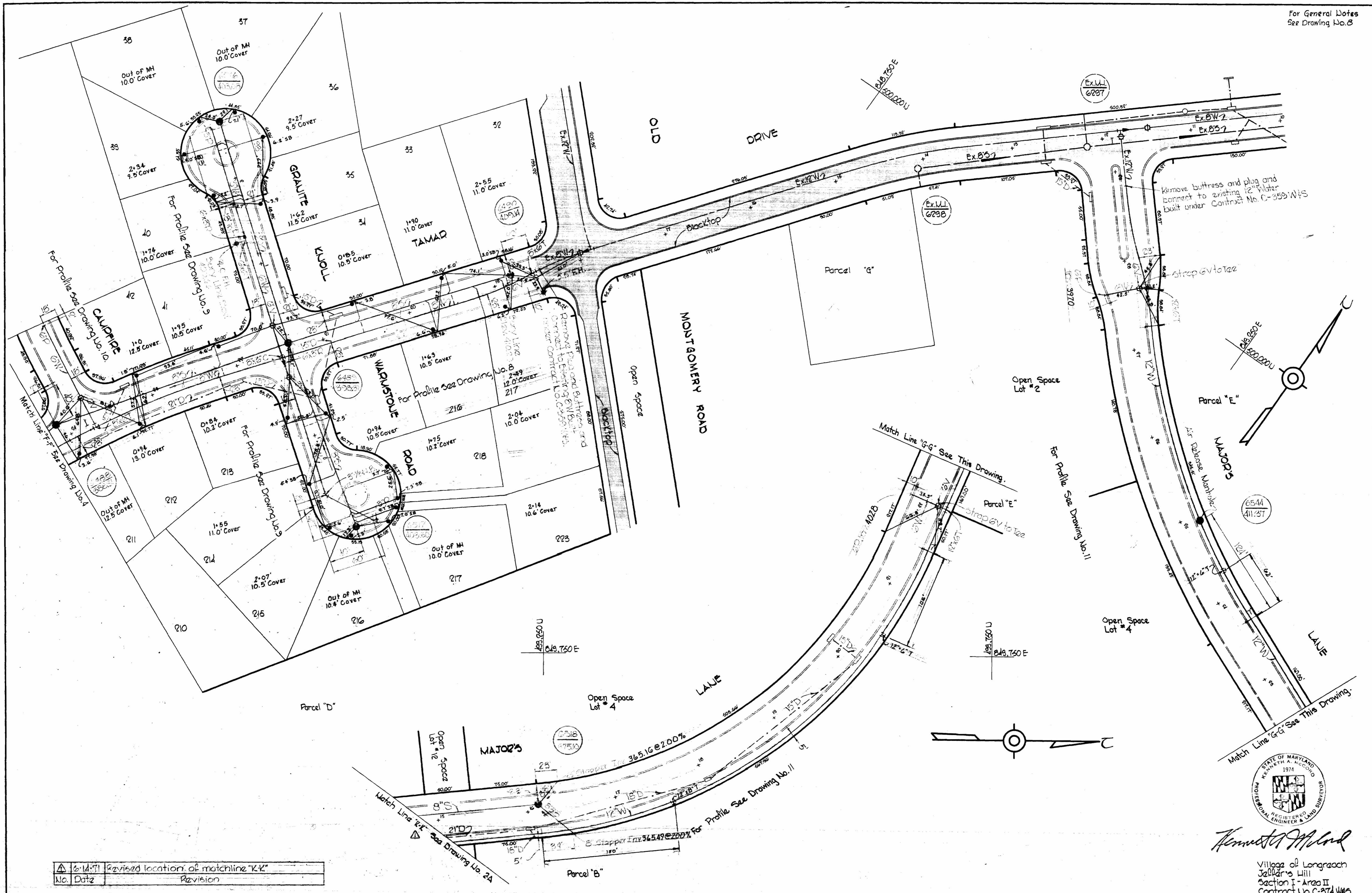
<b>WHITMAN, REQUARDT &amp; ASSOCIATES</b> ENGINEERS 1304 ST. PAUL ST. BALTIMORE, MARYLAND	<b>DEPARTMENT OF PUBLIC WORKS</b> HOWARD COUNTY, MARYLAND DATE <u>12-21-70</u> <i>W. O. Gilbert</i> CHIEF - BUREAU OF WATER AND SEWER	<b>CONTRACT NO. C-374 W85</b>	<b>PLAN OF</b> <b>WATER &amp; SEWER MAINS</b>	<b>COLUMBIA</b> <b>VILLAGE OF LONGREACH</b> <b>ELECTION DISTRICT GUILFORD No. 6</b>	<b>DRAWING NO. 4 OF 12</b> <b>SCALE 1" = 50'</b>
--	---	-------------------------------	--	---	---

W. O. 6083-2

July 28, 1972

BUILT

WS 374-W85/4



No.	Date	Revision
1	6-14-71	Revised location of matchline "K-K"

**WHITMAN, REQUARDT & ASSOCIATES**  
ENGINEERS  
1304 ST. PAUL ST.  
BALTIMORE, MARYLAND

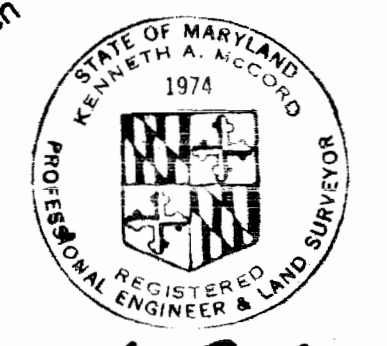
DEPARTMENT OF PUBLIC WORKS  
HOWARD COUNTY, MARYLAND  
12-21-70  
*W. O. Pilbert*  
CHIEF - BUREAU OF WATER AND SEWER

CONTRACT NO. C-374 W&S

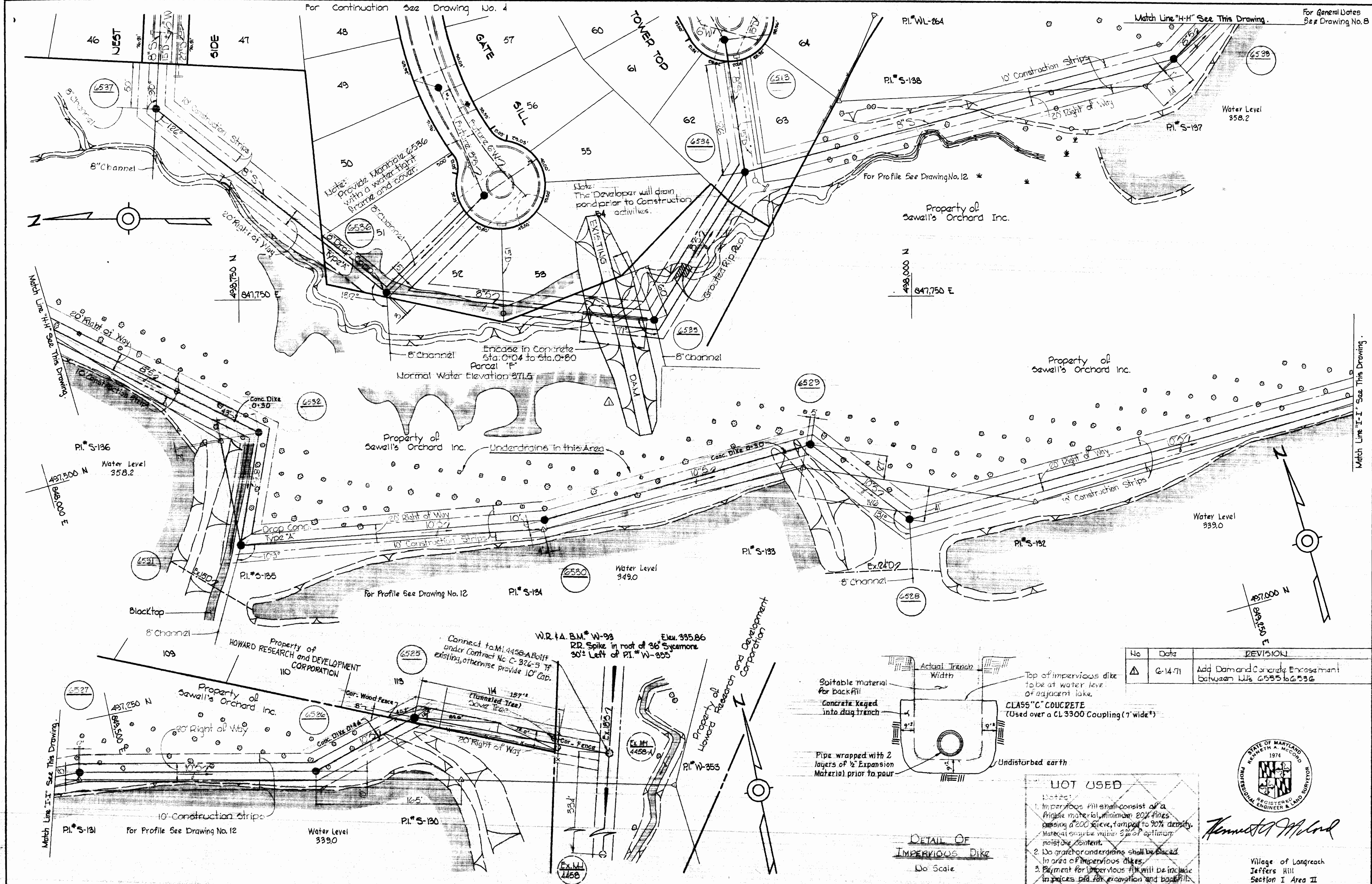
PLAN OF  
WATER & SEWER MAINS

COLUMBIA  
VILLAGE OF LONGREACH  
ELECTION DISTRICT GUILFORD No. 6

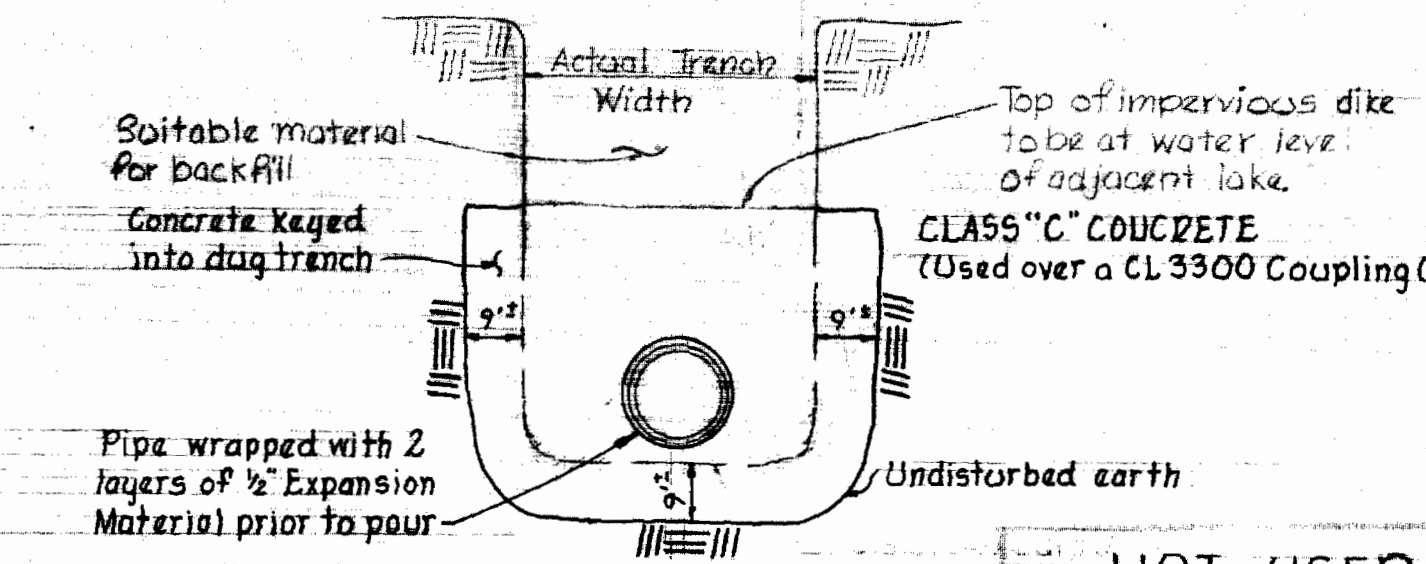
DRAWING NO. 5 OF 12 SCALE 1" = 50'



*Kenneth A. McCord*  
Village of Longreach  
Jellens Hill  
Section I - Area II  
Contract No. C-374 W&S



No	Date	REVISION
1	6-14-71	Add Dam and Concrete Encasement between WJs 6535 to 6536



**NOT USED**

Notes:

1. Impervious fill shall consist of a friable material, minimum 80% fines passing a #200 sieve, tamped to 90% density. Material moisture within 3% of optimum moisture content.
2. No gravel or underdrains shall be placed in area of impervious dikes.
3. Payment for impervious fill will be include in prices bid for excavation and backfill.



*Kenneth A. McLeod*

Village of Longreach  
Jeffers Hill  
Section I Area II  
Contract No. C-374 W85

**WHITMAN, REQUARDT & ASSOCIATES**  
ENGINEERS  
1304 ST. PAUL ST.  
BALTIMORE, MARYLAND

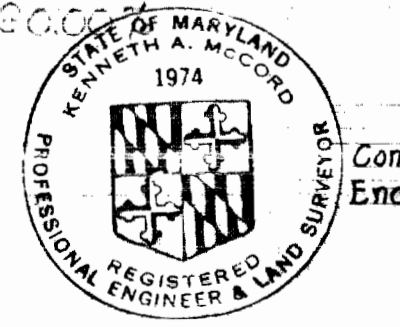
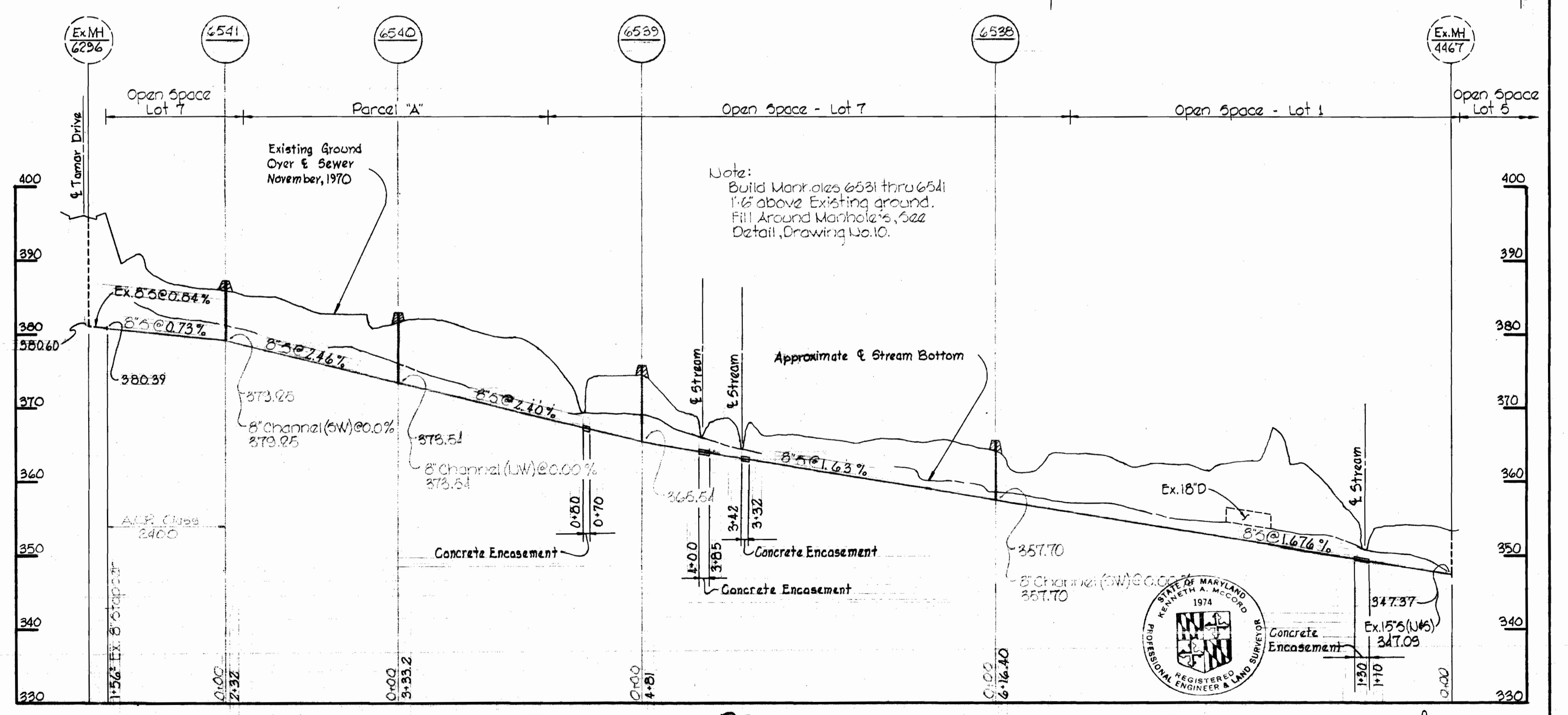
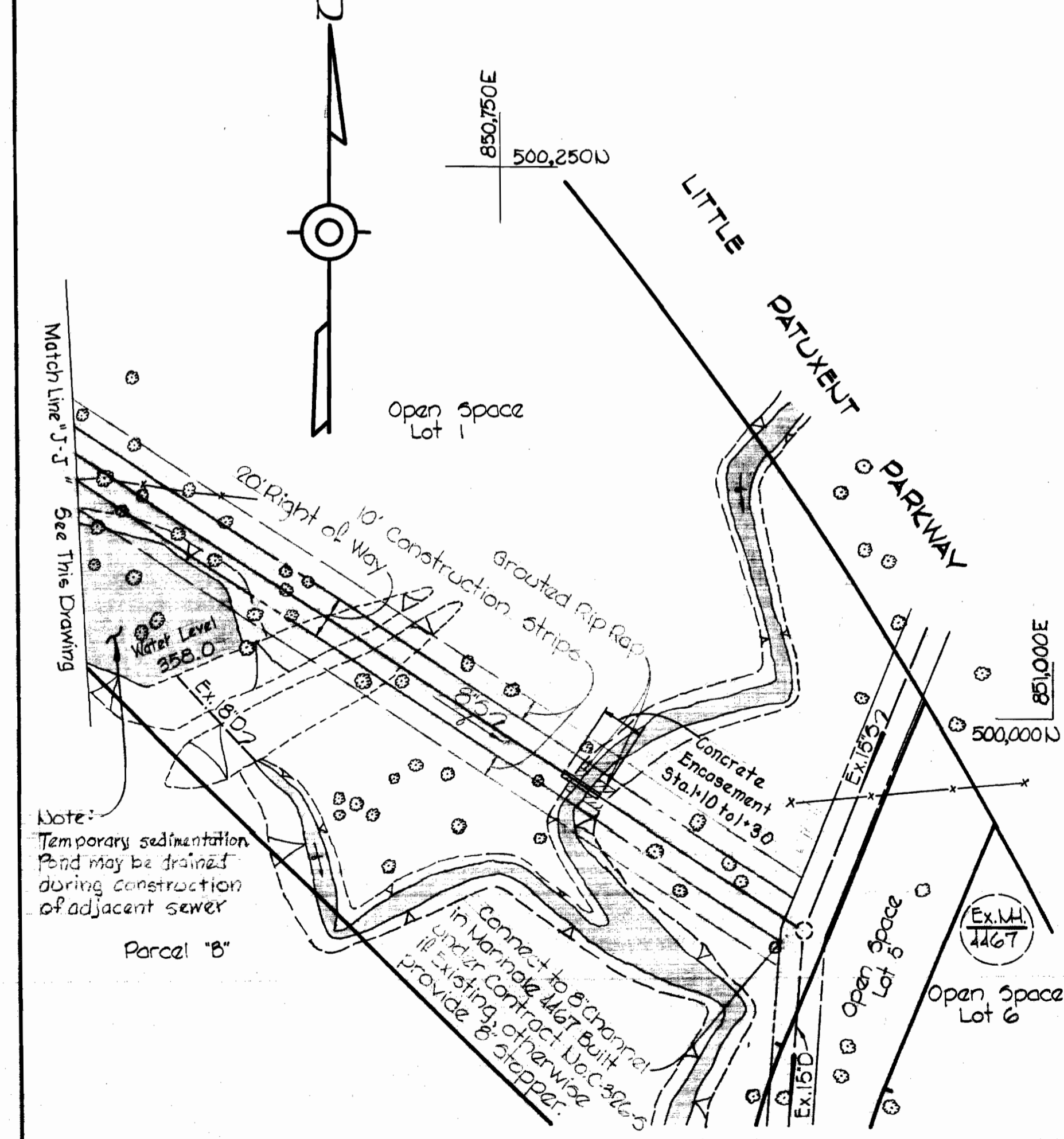
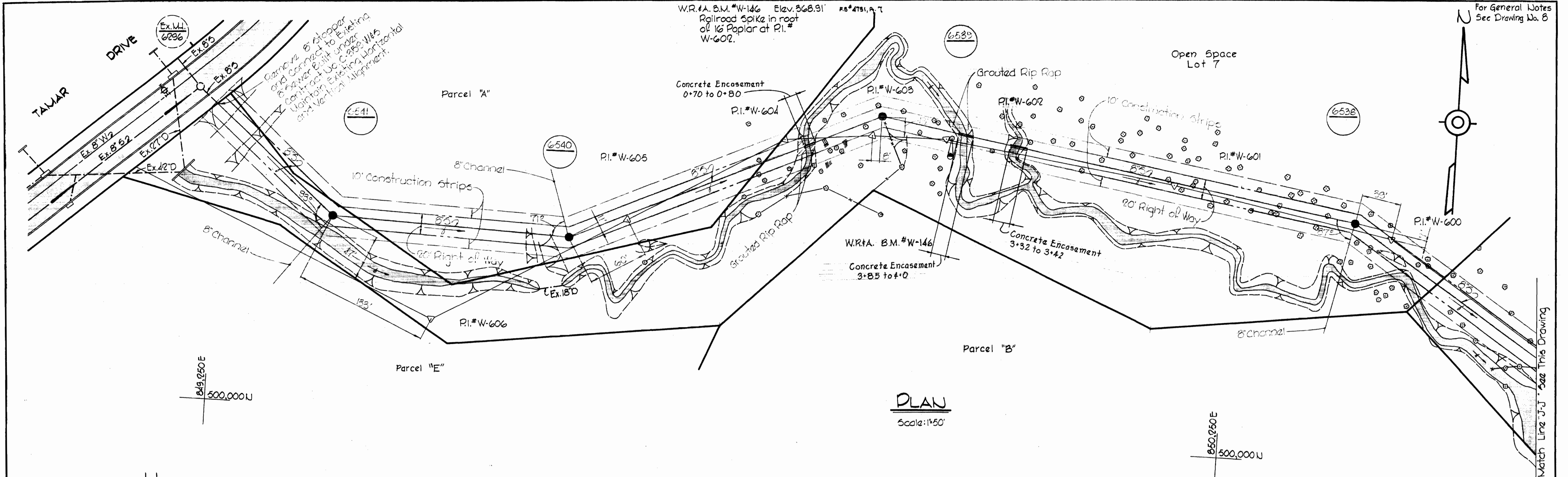
**DEPARTMENT OF PUBLIC WORKS**  
HOWARD COUNTY, MARYLAND  
DATE: 12-21-70  
W. O. Pilbert  
CHIEF - BUREAU OF WATER AND SEWER

**CONTRACT NO. C-374 W85**

**PLAN OF WATER & SEWER MAINS**

**COLUMBIA VILLAGE OF LONGREACH ELECTION DISTRICT GUILFORD No. 6**

**DRAWING NO. 6 OF 12 SCALE 1" = 50'**



*Kenneth A. McCord*

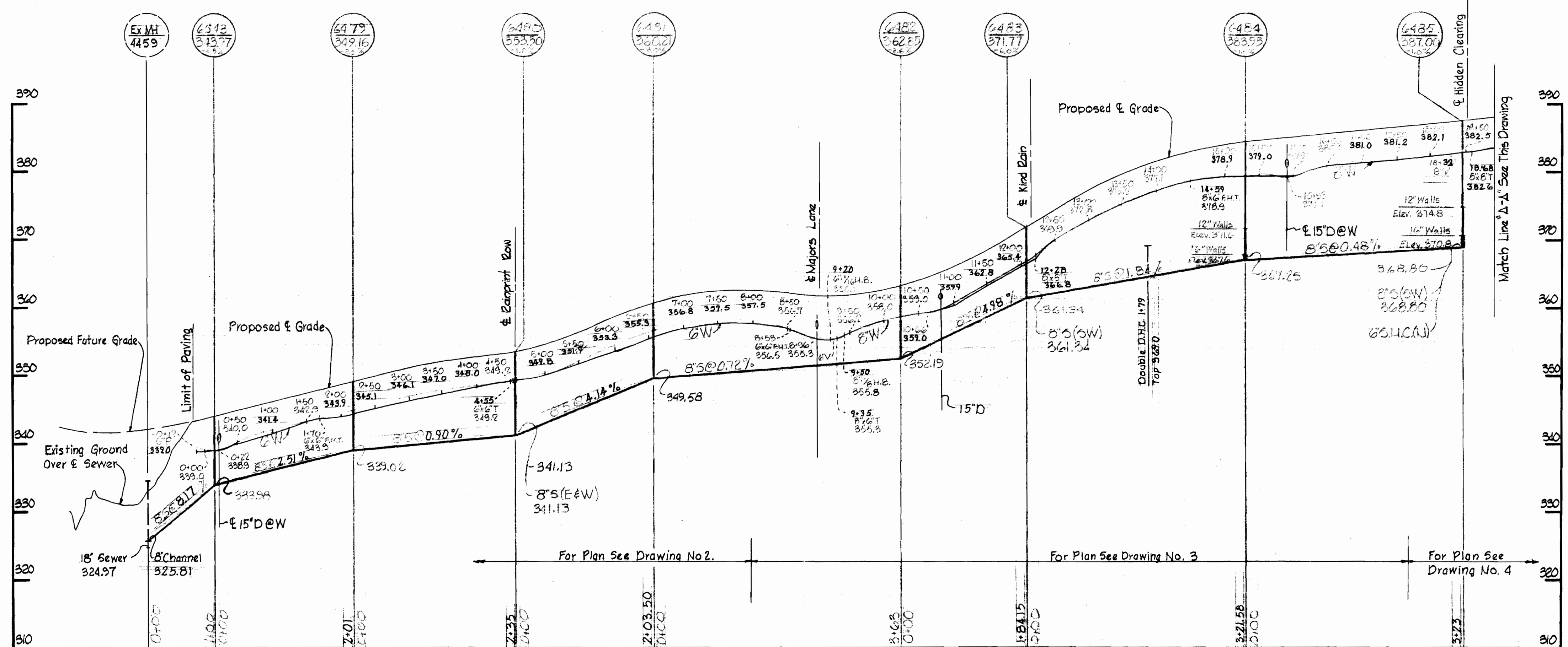
Village of Longreach  
Jett's Hill  
Section I Area II  
Contract No. C-374 WBS

<p><b>WHITMAN, REQUARDT &amp; ASSOCIATES</b> ENGINEERS 1304 ST. PAUL ST. BALTIMORE, MARYLAND</p>	<p><b>DEPARTMENT OF PUBLIC WORKS</b> HOWARD COUNTY, MARYLAND 12-21-70 DATE</p> <p><i>W. O. Roberts</i> CHIEF - BUREAU OF WATER AND SEWER</p>	<p><b>CONTRACT NO. C-374 WBS</b></p>	<p><b>PLAN &amp; PROFILE OF SEWER MAINS</b></p>	<p><b>COLUMBIA VILLAGE OF LONGREACH ELECTION DISTRICT GUILFORD No. 6</b></p>	<p><b>DRAWING NO. 7 OF 12</b></p> <p><b>SCALE AS SHOWN</b></p> <p>493-487 500-487 500-486</p>
--	--	--------------------------------------	---	--	---

WS 374-WBS/7



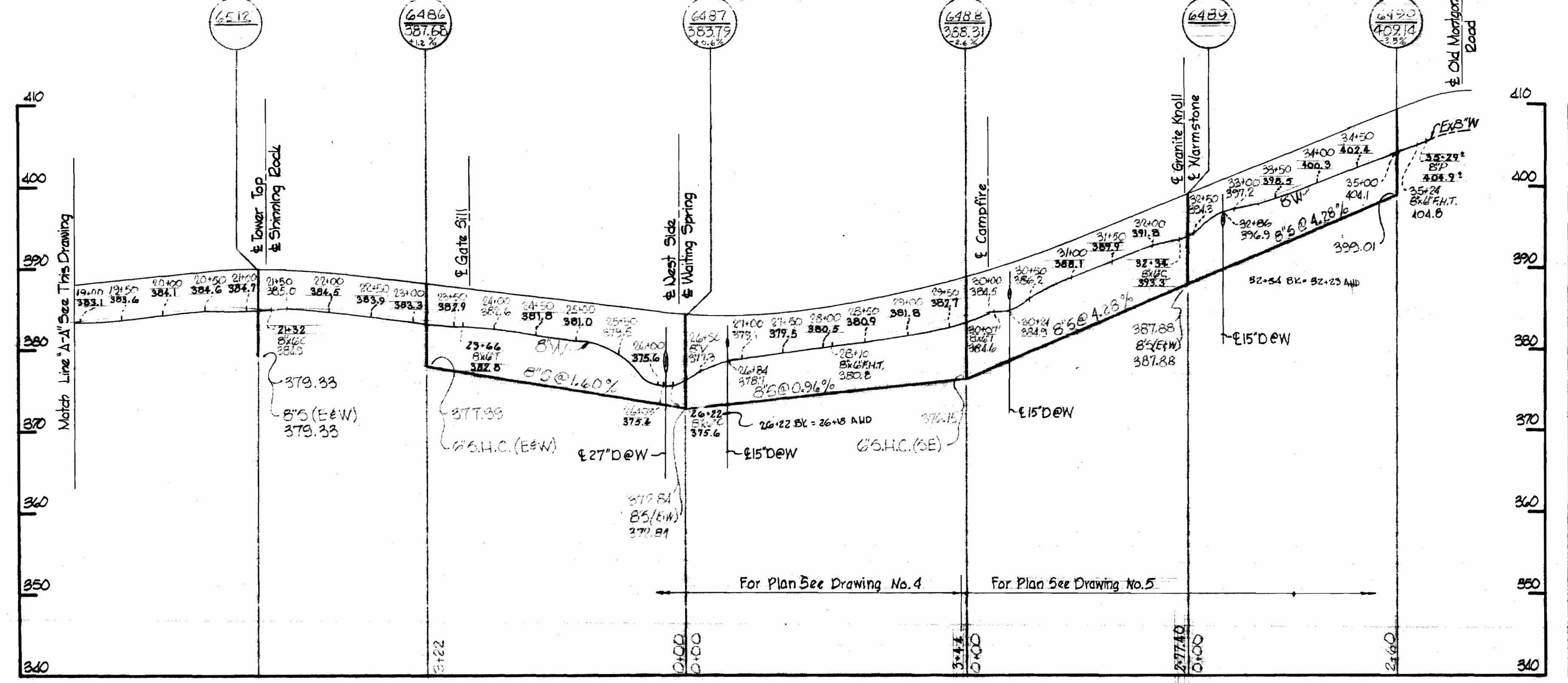
TAMAR DRIVE



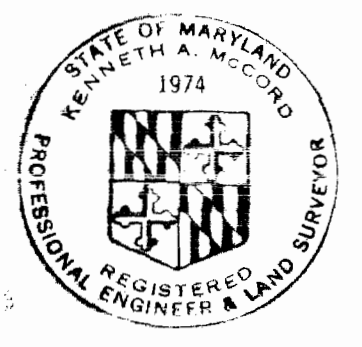
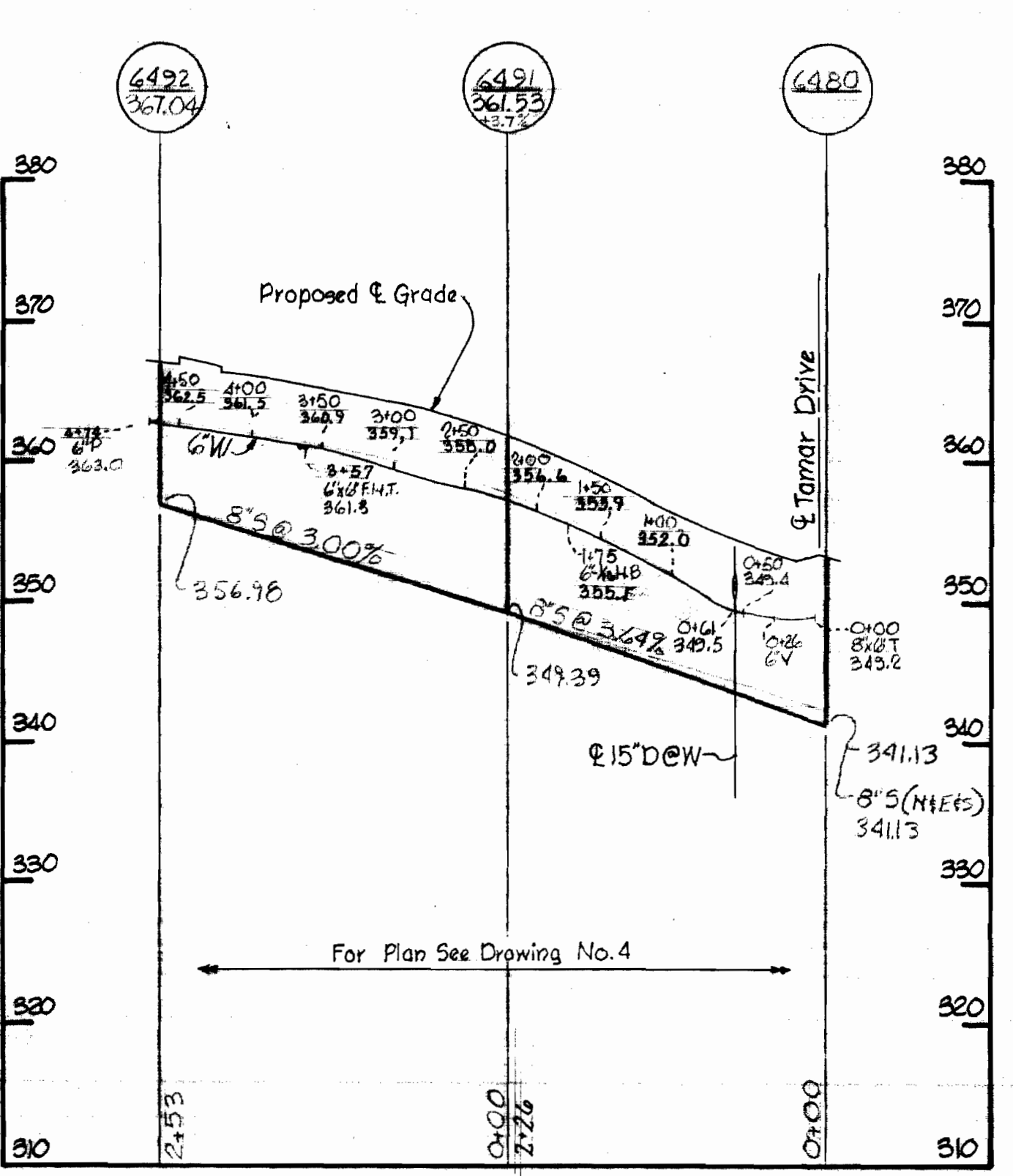
GENERAL NOTES

1. Approximate location of existing mains are shown. The Contractor shall take all necessary precautions to protect existing mains and services and maintain uninterrupted supply. Any damage incurred shall be repaired immediately.
2. All pipe elevations shown are invert elevations.
3. The Contractor shall locate existing mains and utilities a minimum of two weeks in advance of construction operations in vicinity of utilities.
4. For all standard details see standards bound in Specifications.
5. All horizontal and vertical controls are based on Maryland State Datum.
6. Clear all utilities by a minimum of 6'; Clear all poles by a minimum of 2'-0" or tunnel as required.
7. All water mains to have a minimum of 3/8' cover.
8. Block all fittings with concrete, see standards bound in Specifications.
9. Bury Line elevations on fire hydrants shall be set to elevations shown on drawings or as directed by the Engineer in the field.
10. All fire hydrants shall be strapped and buttressed in accordance with Standard Details.
11. Cost of strapping fire hydrants and valves to trees to be included in unit price bid for furnishing and laying of water mains.
12. The Contractor shall provide a joint in all sewer mains within 2'-0" of exterior manhole walls.
13. All manholes shall be 4'-0" inside diameter.
14. 12" and 16" manhole walls pertain to brick manholes only.

TAMAR DRIVE



RAINPRINT ROW

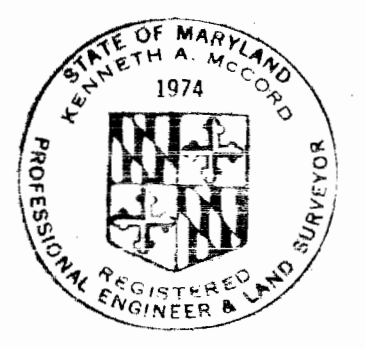
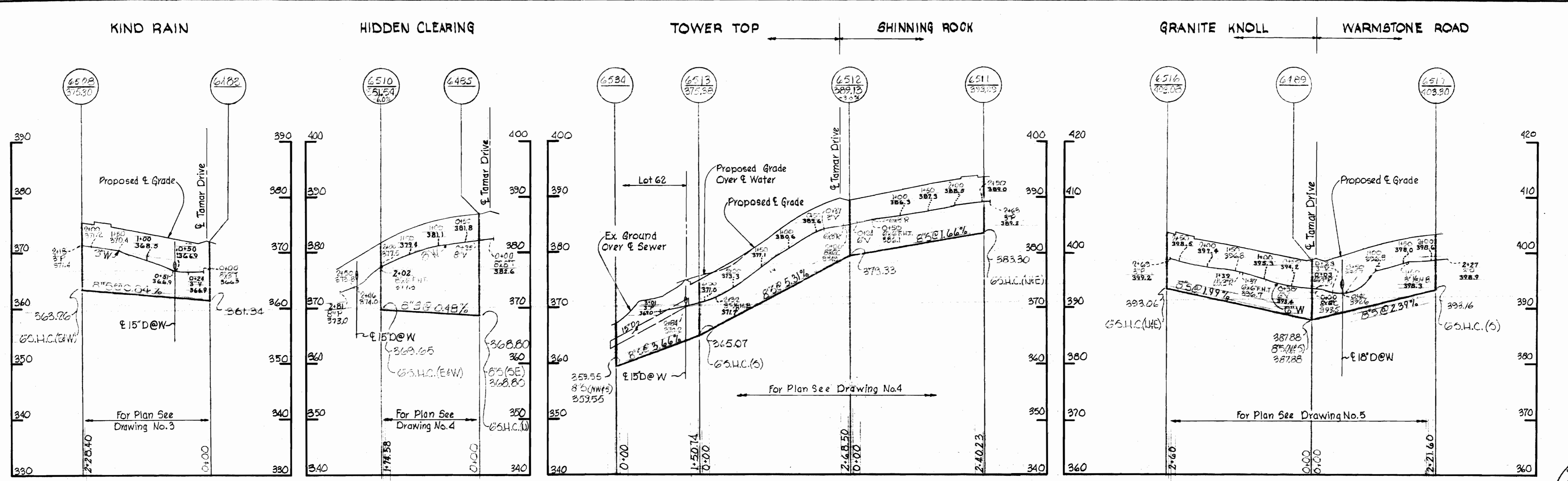


*Kenneth A. McLeod*

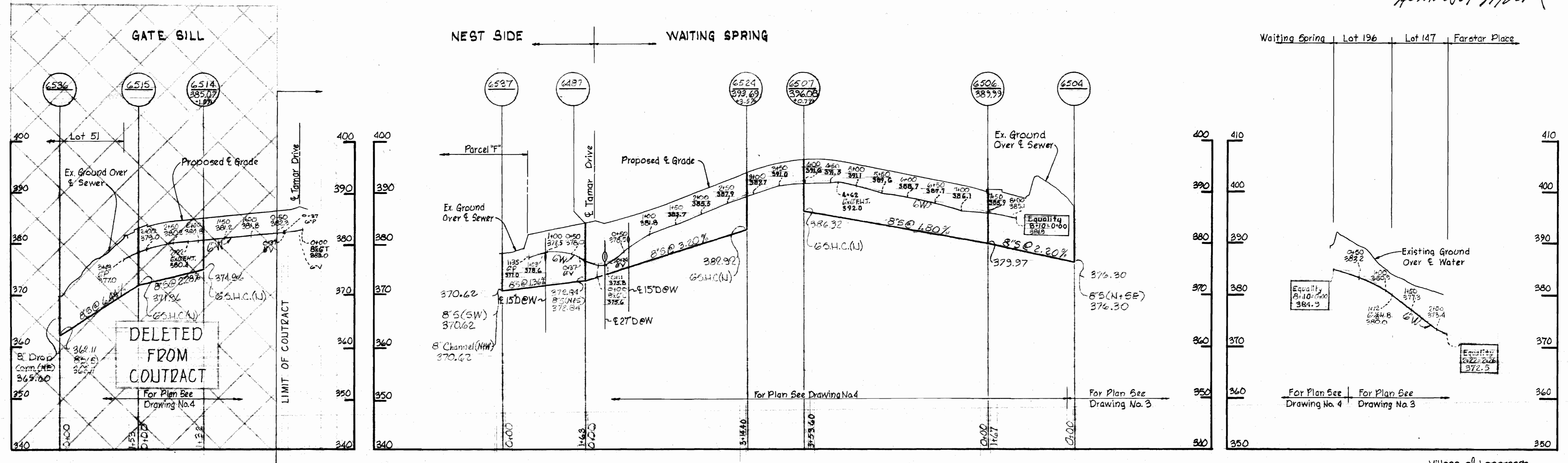
Village of Longreach  
 Jaffar's Hill  
 Section I-Area II  
 Contract No. C-374 W&S

WHITMAN, REQUARDT & ASSOCIATES ENGINEERS 1304 ST. PAUL ST. BALTIMORE, MARYLAND	DEPARTMENT OF PUBLIC WORKS HOWARD COUNTY, MARYLAND DATE: 12-21-70 W. O. Gilbert CHIEF - BUREAU OF WATER AND SEWER	CONTRACT NO. C-374 W&S	PROFILES OF WATER & SEWER MAINS	COLUMBIA VILLAGE OF LONGREACH ELECTION DISTRICT GUILFORD No. 6	DRAWING NO. 8 OF 12 SCALE: H:1"=100' V:1"=10'
---	---	------------------------	------------------------------------	--	--

WS 374-W&S/B



*Kenneth A. McCord*



**WHITMAN, REQUARDT & ASSOCIATES**  
ENGINEERS  
1304 ST. PAUL ST.  
BALTIMORE, MARYLAND

**DEPARTMENT OF PUBLIC WORKS**  
HOWARD COUNTY, MARYLAND  
12-21-70  
*W. O. Falbert*  
CHIEF - BUREAU OF WATER AND SEWER

CONTRACT NO. C-374 W&S

PROFILES OF  
WATER & SEWER MAINS

**COLUMBIA**  
VILLAGE OF LONGREACH  
ELECTION DISTRICT GUILFORD No. 6

**DRAWING**  
NO. 9  
OF 12

**SCALE**  
H:1"=100'  
V:1"=10'

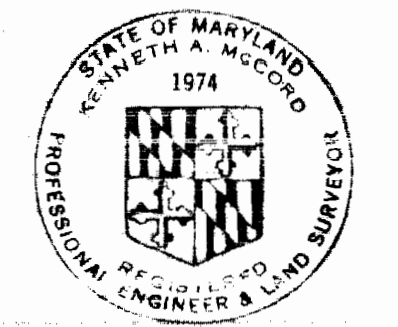
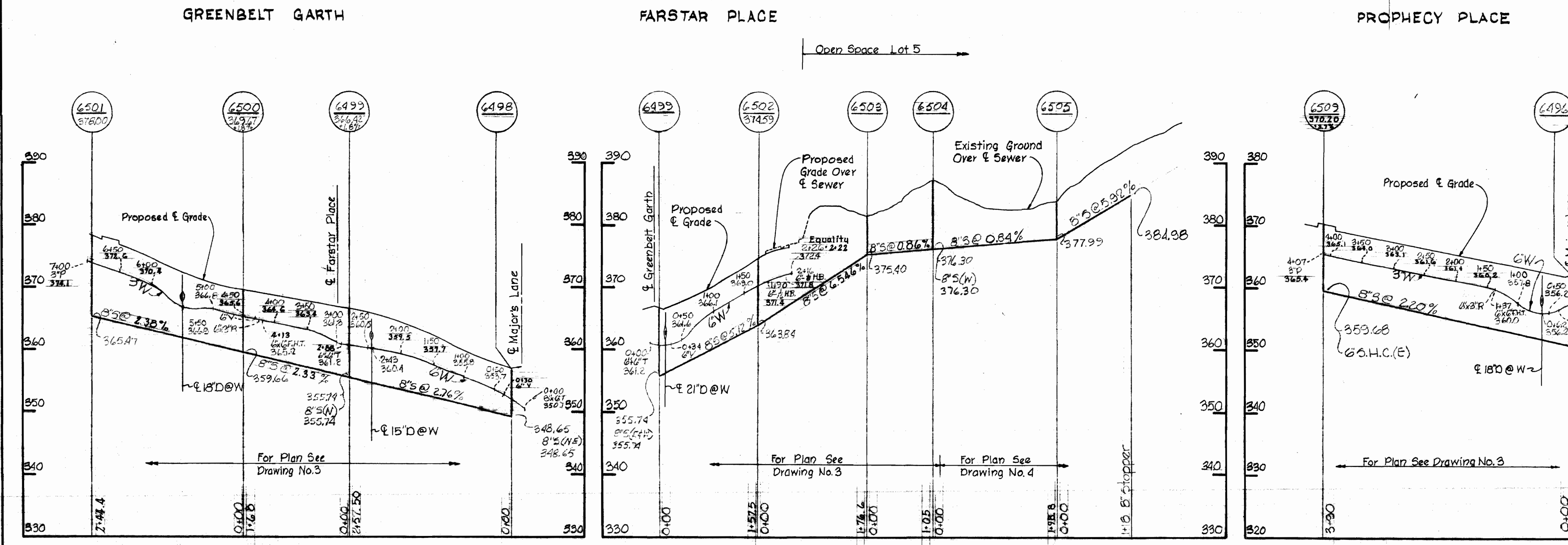
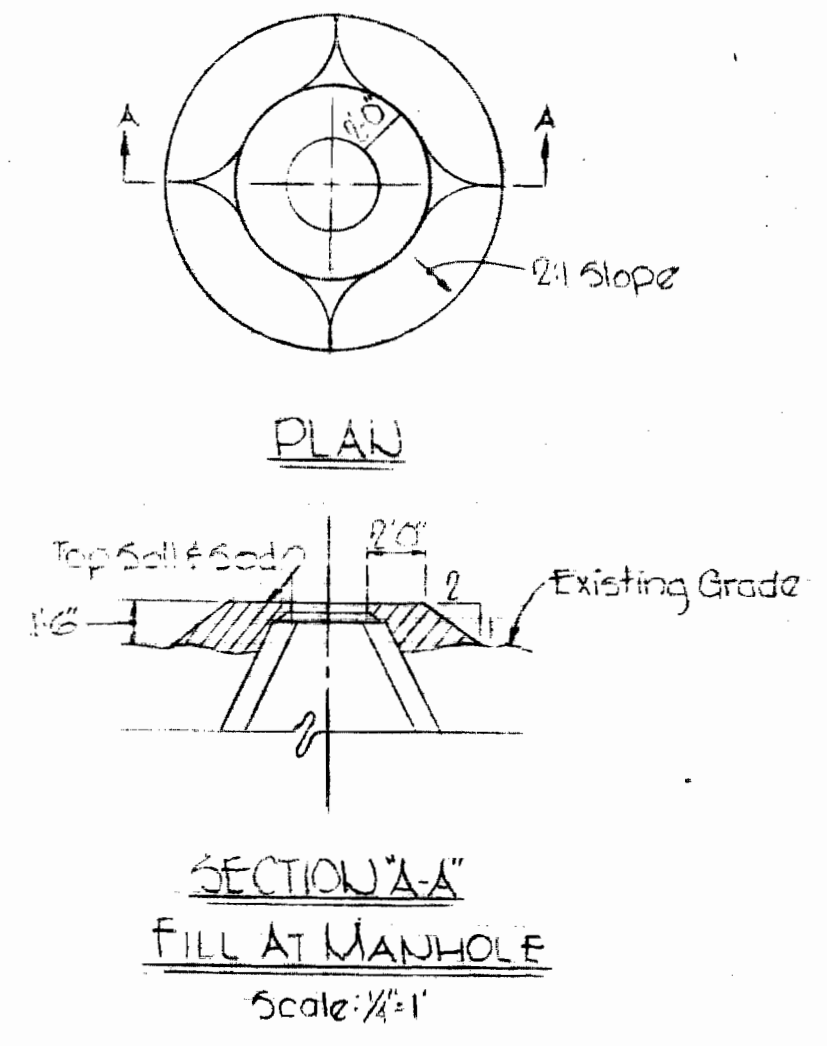
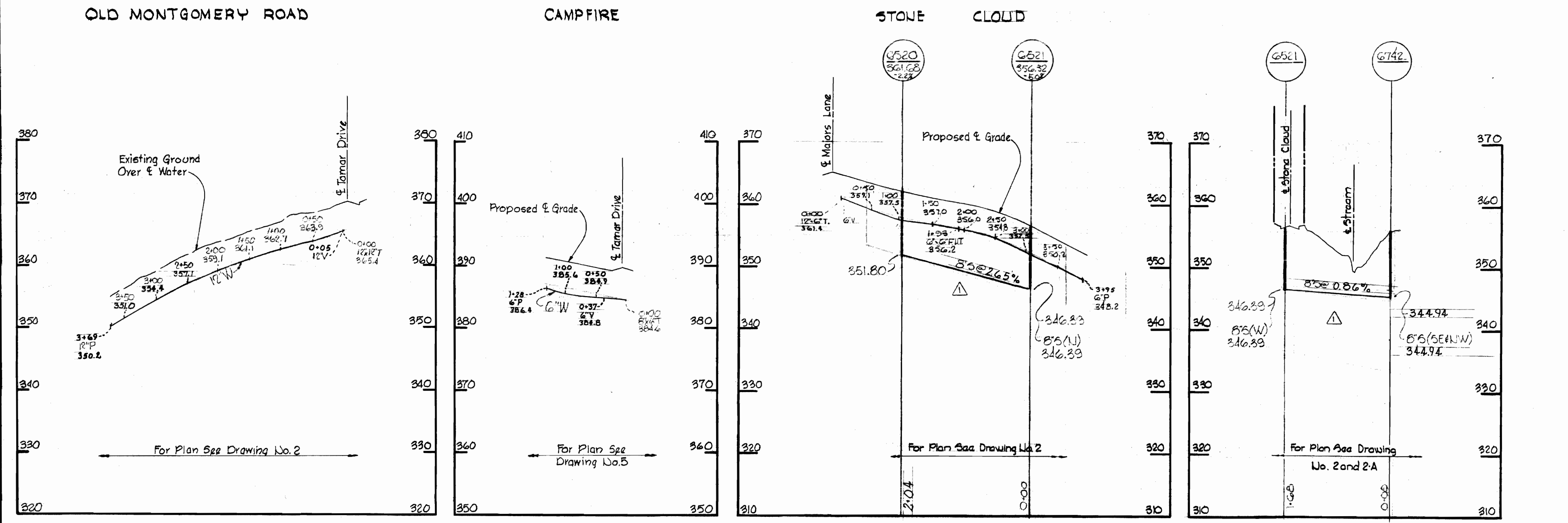
Village of Longreach  
Jaffer's Hill  
Section I - Area II  
Contract No. C-374 W&S

July 28, 1972

WS 374-W&S/4

NO	DATE	REVISION
1	6-14-71	Revised 8" Sewer Alignment in Stone Cloud

For General Notes See Drawing No. 5



*Kenneth A. McCord*

Village of Longreach  
Jaffers Hill  
Section I - Area II  
Contract No. C-374 WBS

WHITMAN, REQUARDT & ASSOCIATES  
ENGINEERS  
1304 ST. PAUL ST.  
BALTIMORE, MARYLAND

DEPARTMENT OF PUBLIC WORKS  
HOWARD COUNTY, MARYLAND  
12-21-70  
*W. O. Silbert*  
CHIEF - BUREAU OF WATER AND SEWER

CONTRACT NO. C-374 WBS

PROFILES OF  
WATER & SEWER MAINS

COLUMBIA  
VILLAGE OF LONGREACH  
ELECTION DISTRICT GUILFORD No. 6

DRAWING NO. 10  
OF 12  
SCALE H:1"=100'  
V:1"=10'

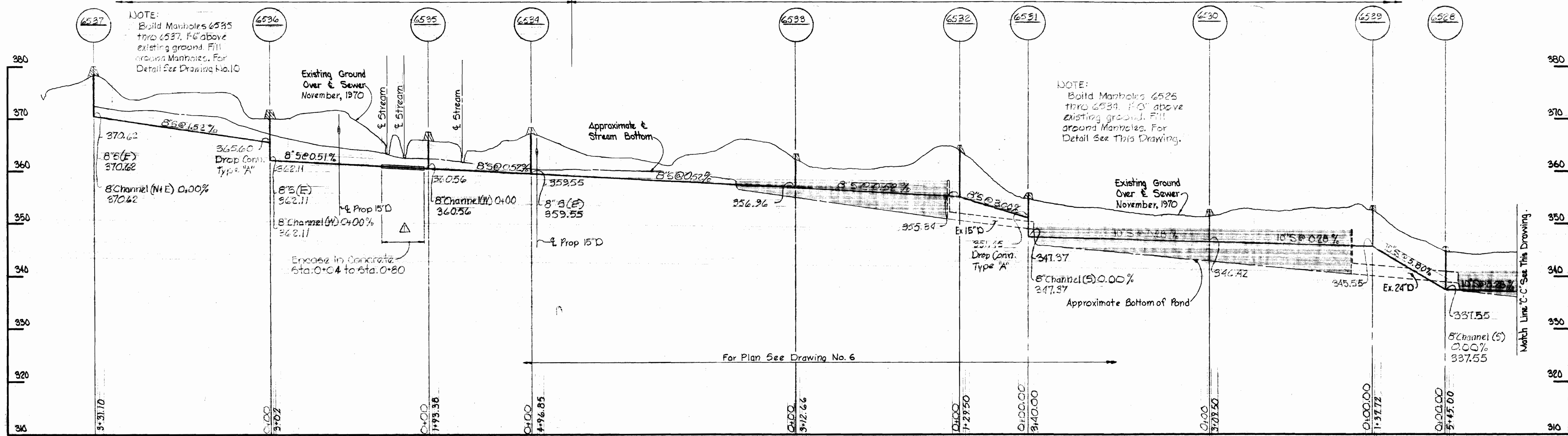
WS 374-W&S/10



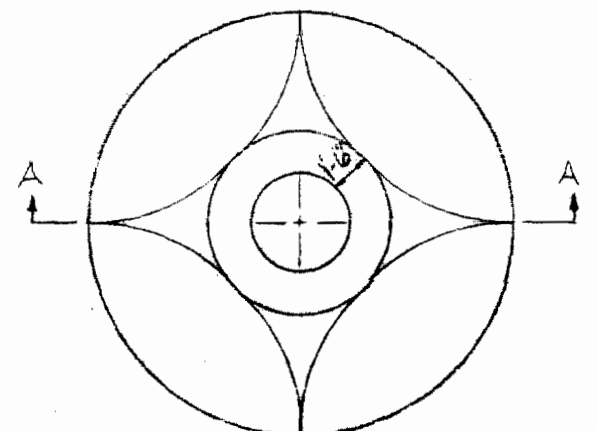
Property of  
HOWARD RESEARCH AND DEVELOPMENT CORPORATION  
Parcel "F"

Property of  
SEWELL'S ORCHARD INC.

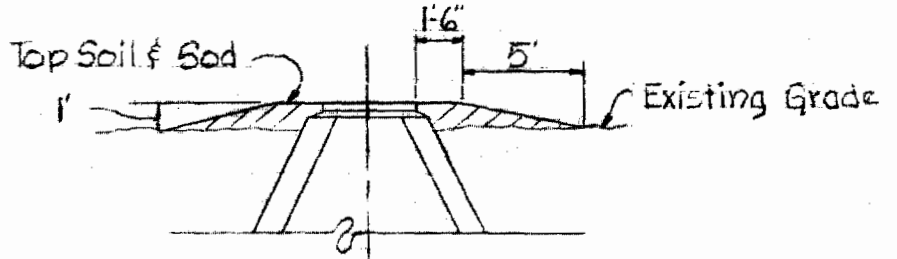
For General Notes  
See Drawing No. 8



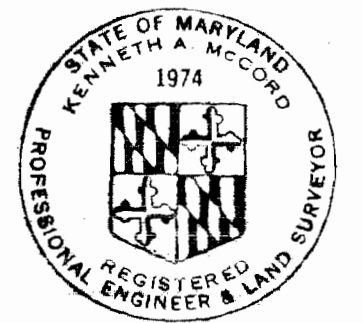
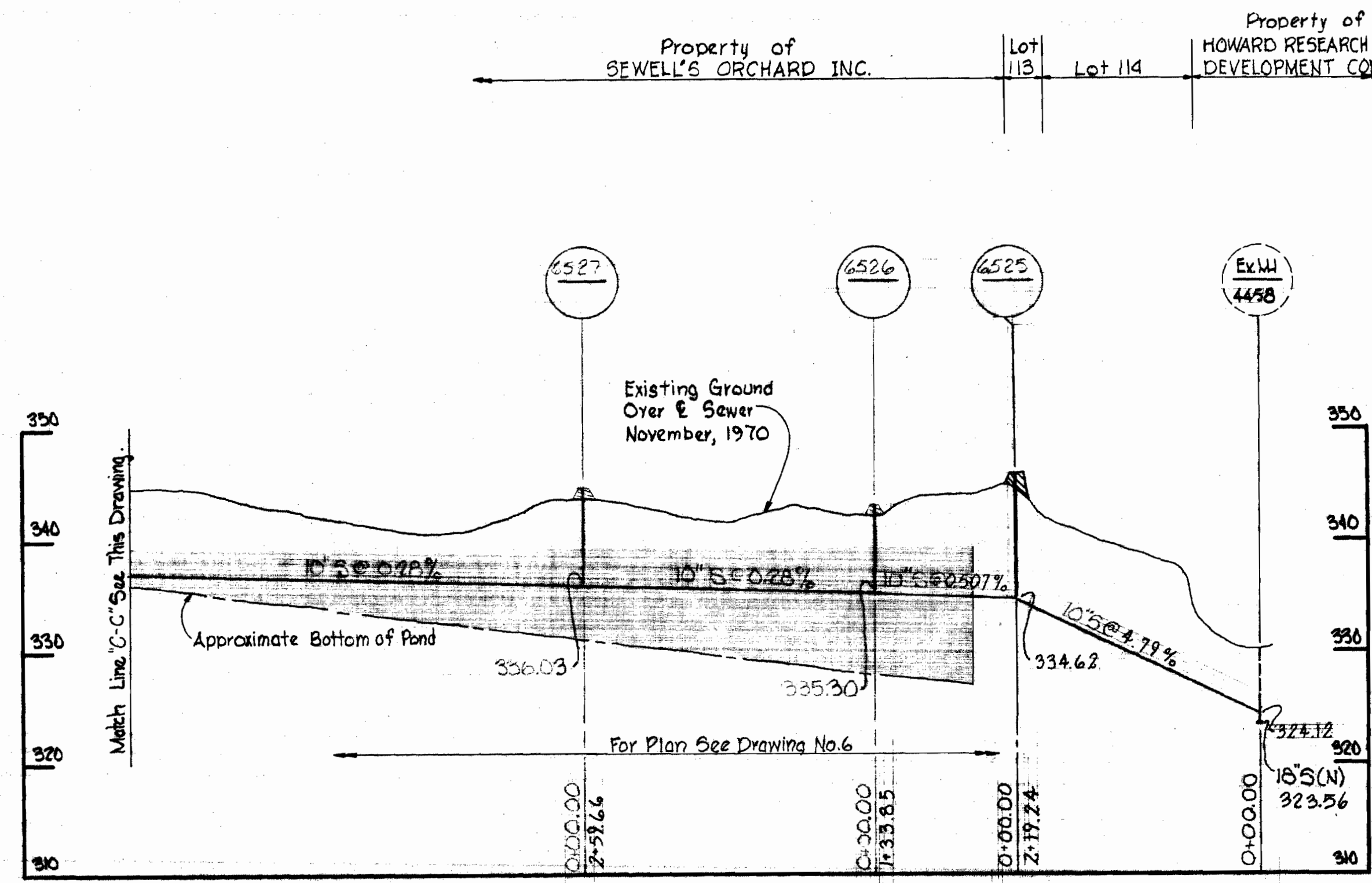
Property of  
SEWELL'S ORCHARD INC. Lot 113 Lot 114 Property of  
HOWARD RESEARCH AND DEVELOPMENT CORPORATION



PLAN



SECTION "AA"  
FILL AT MANHOLE  
SEWELL PROPERTY ONLY  
Manholes 6525 thro 6534  
Scale 1/2"=1'



*Kenneth A. McCord*

△	G-14-71	Add Dam and Concrete Encasement between MWs 6525 to 6526
NO.	DATA	REVISION

Village of Longreach  
Jeffers Hill  
Section I Area II  
Contract No. C-374 WFS

<b>WHITMAN, REQUARDT &amp; ASSOCIATES</b> ENGINEERS 1304 ST. PAUL ST. BALTIMORE, MARYLAND	DEPARTMENT OF PUBLIC WORKS HOWARD COUNTY, MARYLAND 12-21-70 <i>W. O. Pilibert</i> CHIEF - BUREAU OF WATER AND SEWER	CONTRACT NO. C-374 W8S	PROFILES OF WATER & SEWER MAINS	COLUMBIA VILLAGE OF LONGREACH ELECTION DISTRICT GUILFORD No. 6	DRAWING NO. 12	SCALE H: 1" = 100' V: 1" = 10'
					OF 12	No. 6

WS 374-WFS/12