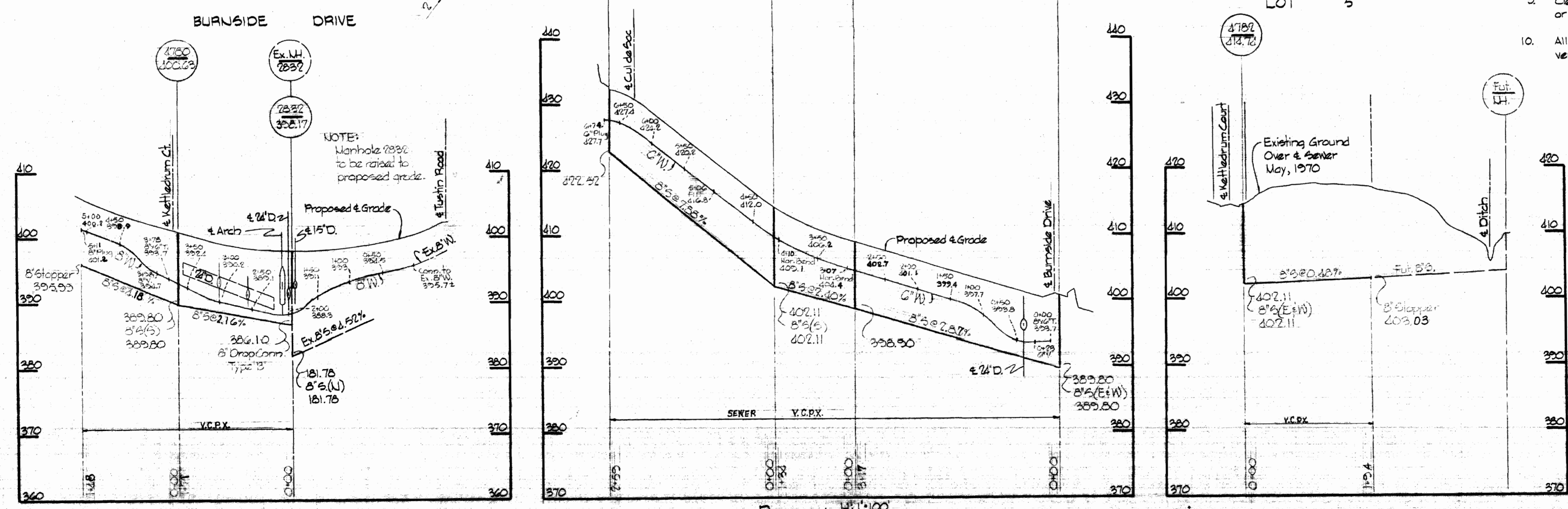


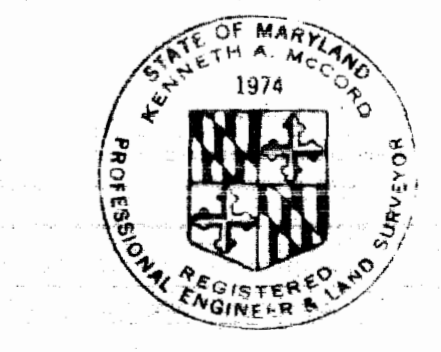
GENERAL NOTES

1. Approximate location of existing mains are shown. The Contractor shall take all necessary precautions to protect existing mains and services and maintain uninterrupted supply. Any damage incurred shall be repaired immediately.
2. All pipe elevations shown are invert elevations.
3. The Contractor shall locate existing utilities a minimum of two weeks in advance of construction operations in vicinity of utilities.
4. For all standard details see standards bound in Specifications.
5. All water mains to have a minimum of 3 1/2' cover unless otherwise noted.
6. Block all fittings with concrete, see standards bound in Specifications.
7. Bury Line elevations on fire hydrants shall be set to the elevations shown on the drawings.
8. All fire hydrants shall be strapped to the tee and shall be buttressed with concrete in accordance with Standard Details.
9. Clear all utilities by a minimum of 6', clear all poles by 2'-0" minimum, or tunnel as required.
10. All horizontal controls are based on Maryland State Datum, all vertical controls are based on Howard County Datum.



STAKEOUT and DIMY in FB. # 4698  
Water Pipe - Cast Iron  
Sewer Pipe - V.C.P.X.

QUANTITIES	
8" Sewer	1,220 L.F.
8" Water	511 L.F.
6" Water	650 L.F.
F.H.	1



*Kenneth M. Conrad*

WHITMAN, REQUARDT & ASSOCIATES ENGINEERS 1304 ST. PAUL ST. BALTIMORE, MARYLAND	DEPARTMENT OF PUBLIC WORKS HOWARD COUNTY, MARYLAND DATE: 5-6-70 <i>W. O. Falwell</i> CHIEF - BUREAU OF WATER AND SEWER	CONTRACT NO. 373 W. 45	PLAN AND PROFILE OF WATER AND SEWER MAINS	CHATEAU RIDGE, SECTION NO. 2 ELECTION DISTRICT, ELLICOTT CITY NO. 2	DRAWING NO. 1	SCALE AS SHOWN
					OF 1	