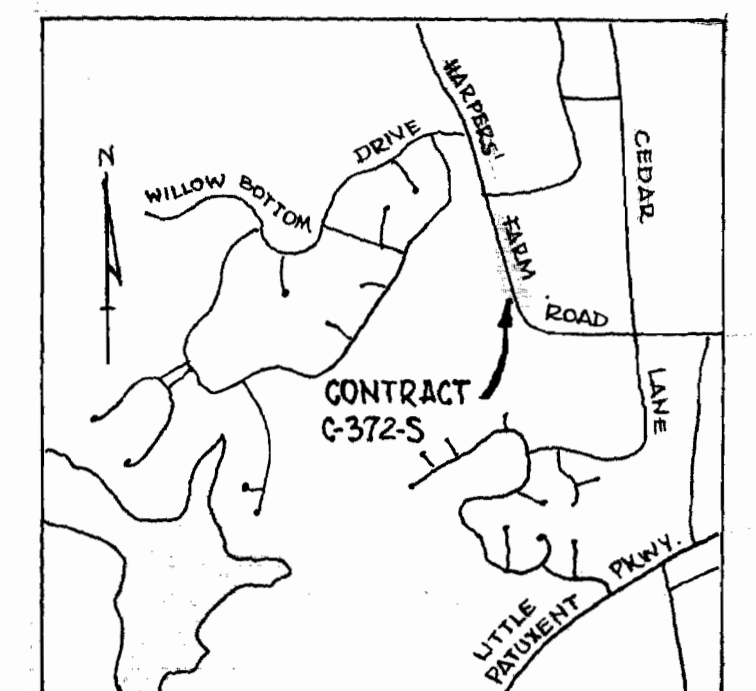
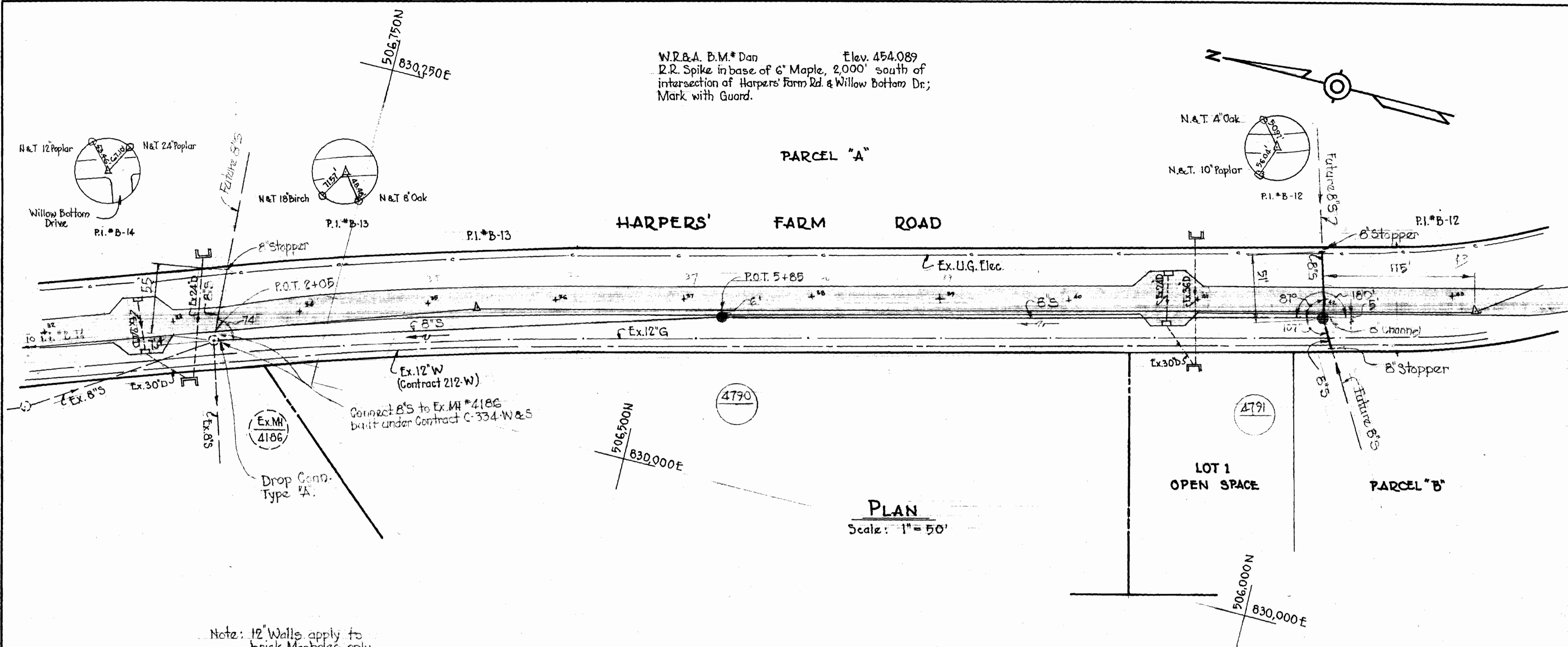


W.R.A. B.M. Dan Elev. 454.089  
 R.R. Spike in base of 6" Maple, 2,000' south of  
 intersection of Harpers Farm Rd. & Willow Bottom Dr.  
 Mark with Guard.



VICINITY MAP  
 Scale: 1" = 2,500'

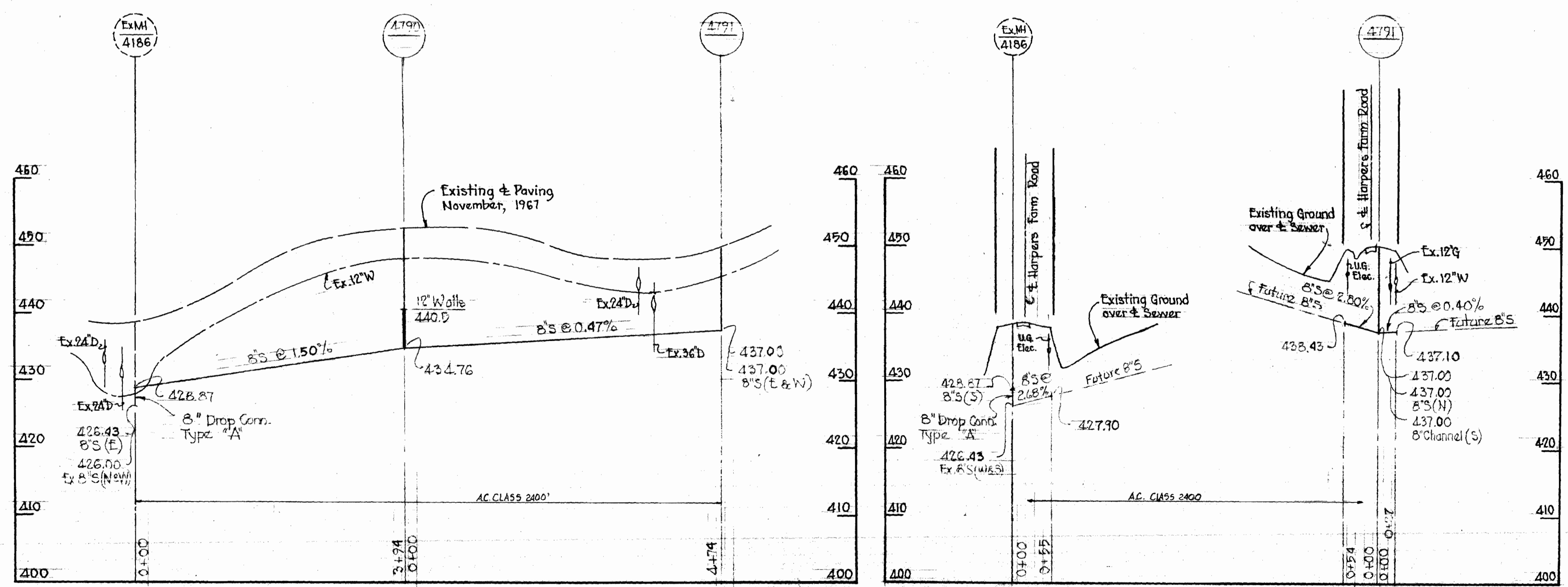


PLAN  
 Scale: 1" = 50'

Note: 12" Walls apply to brick Manholes only.

- GENERAL NOTES -

1. Approximate location of existing mains are shown. The Contractor shall take all necessary precautions to protect existing mains and services and maintain uninterrupted supply. Any damage incurred shall be repaired immediately.
2. All pipe elevations shown are invert elevations.
3. The Contractor shall locate existing utilities a minimum of two weeks in advance of construction operations in vicinity of utilities.
4. For all standard details see standards bound in Specifications.
5. Clear utilities by a minimum of 6', clear all poles by 2'-0" minimum or tunnel as required.
6. The Contractor shall provide a joint in all sewer mains, within 2'-0" of exterior manhole walls.
7. All manholes shall be 4'-0" inside diameter.
8. All horizontal and vertical controls are based on Maryland State Datum.



PROFILES  
 Scale: Horiz. 1" = 100'  
 Vert. 1" = 10'



*Kenneth A. McCord*

WHITMAN, REQUARDT & ASSOCIATES ENGINEERS 1304 ST. PAUL ST. BALTIMORE, MARYLAND	DEPARTMENT OF PUBLIC WORKS HOWARD COUNTY, MARYLAND DATE <i>5-26-70</i> <i>W. O. Pellock</i> CHIEF - BUREAU OF WATER AND SEWER	CONTRACT NO. <i>C-372-S</i>	PLAN AND PROFILES OF SEWER MAINS	COLUMBIA VILLAGE OF HARPER'S CHOICE ELECTION DISTRICT CLARKSVILLE No. 5	DRAWING NO. <i>1</i> OF <i>1</i>	SCALE AS SHOWN <i>909-275</i> <i>908-278</i>
					Village of Harpers Choice Section 5, Area 3 Contract No. 372-S	October 20, 1970 AS BUILT F.B. #2029

suspend ex 1

suspend ex 1