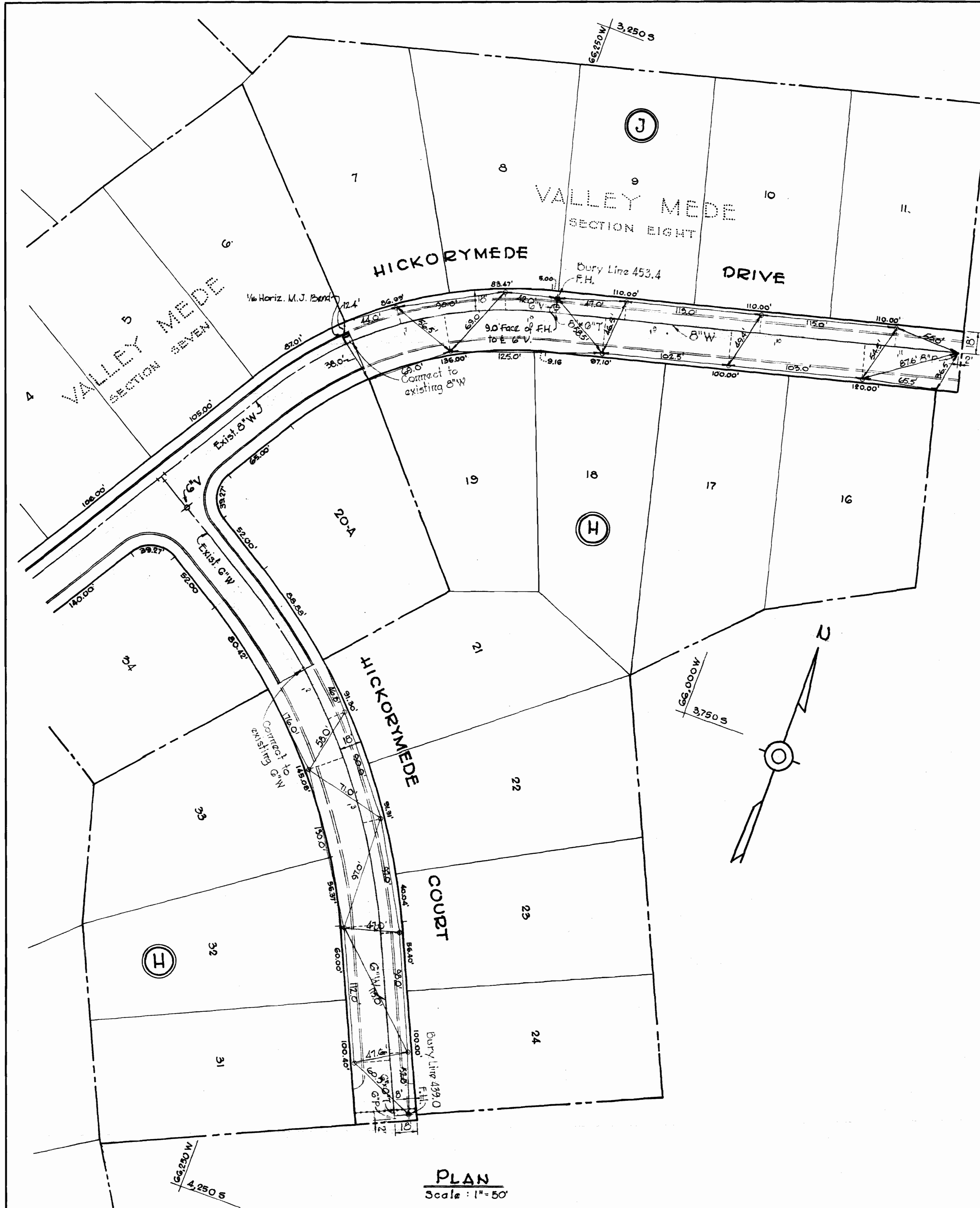


WS 370-W/1

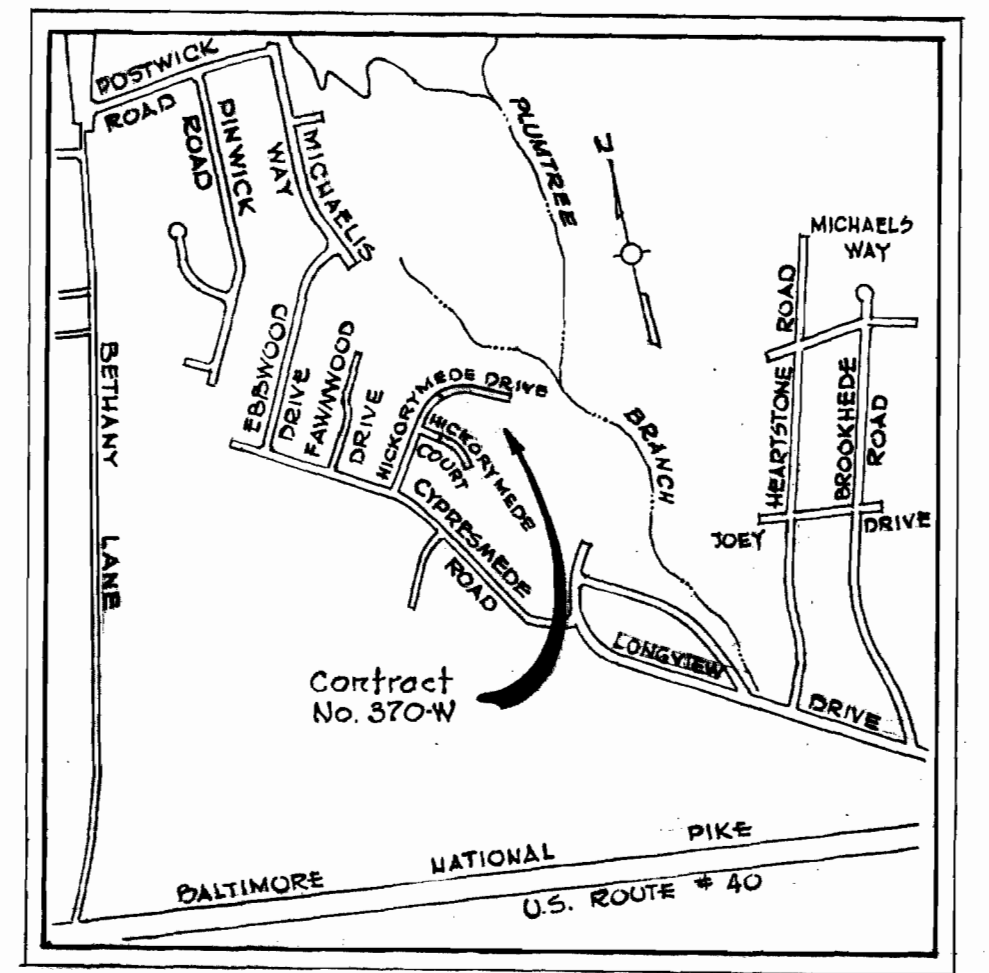
SUSPENDED

REVISIONS

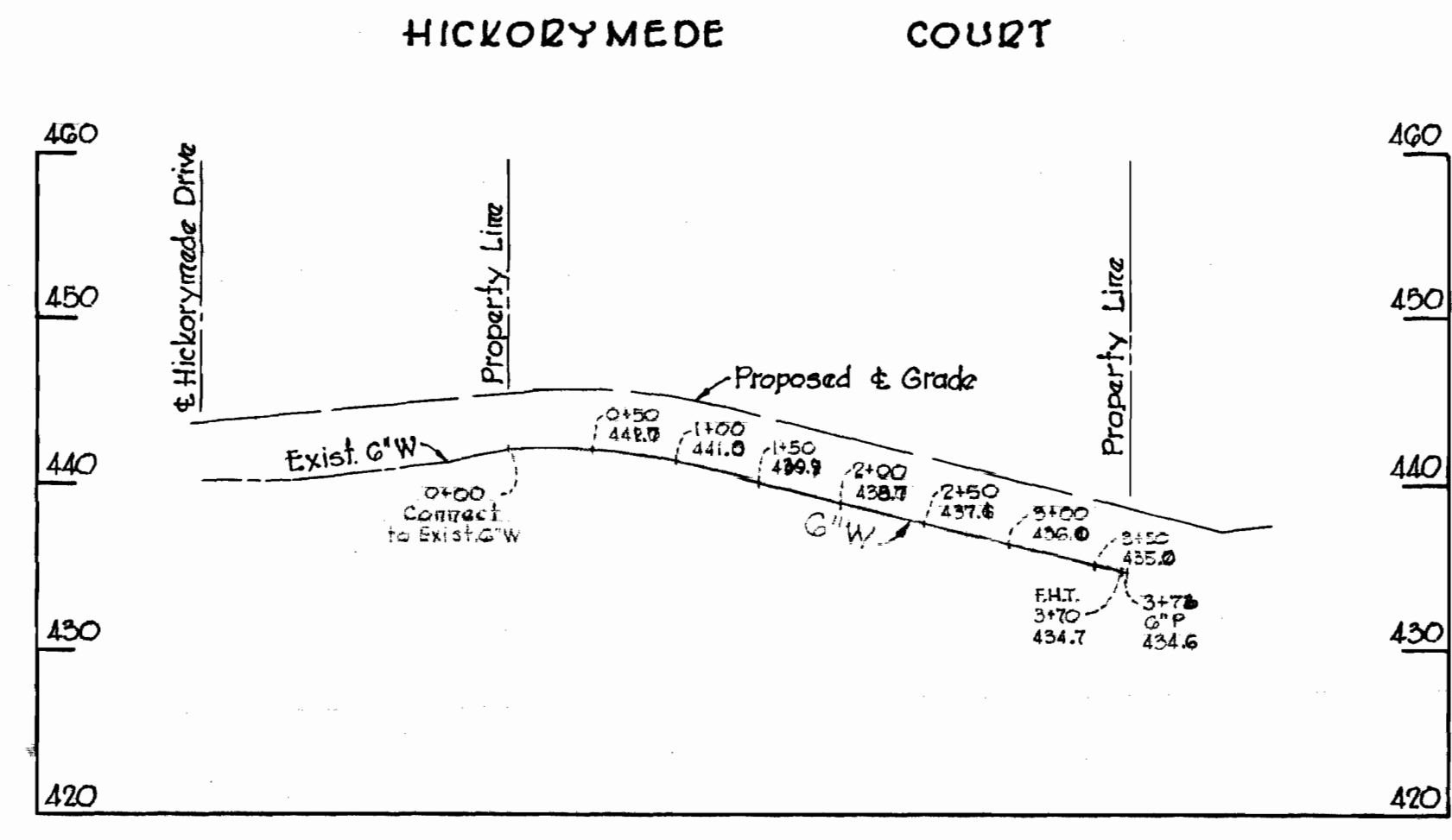
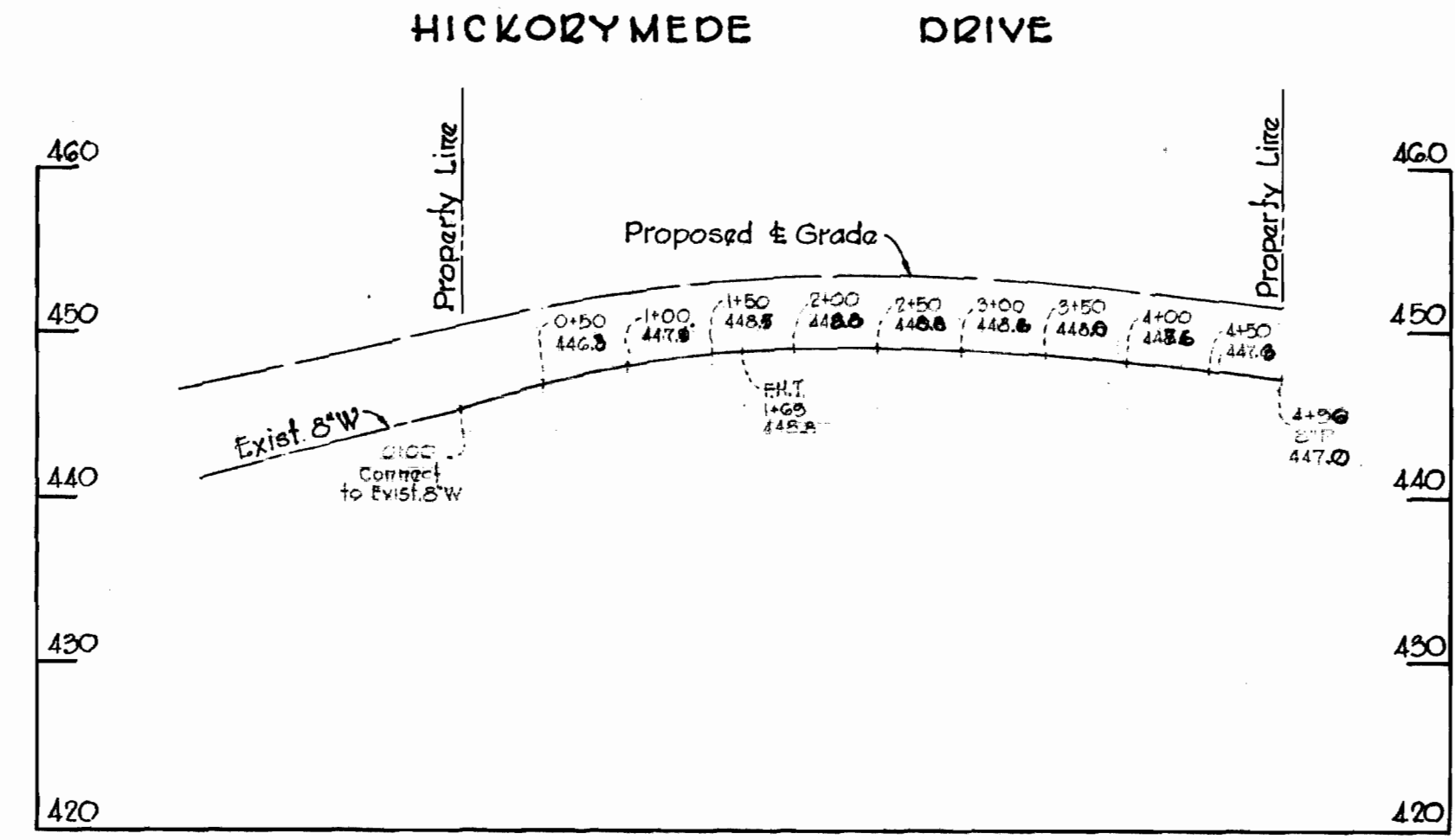


PLAN
Scale: 1"=50'

- ### GENERAL NOTES
1. Approximate location of existing mains are shown. The Contractor shall take all necessary precautions to protect existing mains and services and maintain uninterrupted supply. Any damage incurred shall be repaired immediately.
 2. All pipe elevations shown are invert \ominus elevations.
 3. The Contractor shall locate existing utilities a minimum of two weeks in advance of construction operations in vicinity of utilities.
 4. For all standard Details see standards bound in Specifications.
 5. All water mains shall have a minimum of 3 1/2' cover.
 6. Block all fittings with concrete, see standard details bound in Specifications.
 7. Bury line elevations on fire hydrants shall be set to elevations shown on drawings.
 8. All fire Hydrants shall be strapped to tree and shall be buttressed with concrete in accordance with Standard Details.
 9. Clear all utilities by a minimum of 6', clear all poles by 2'-0" minimum or tunnel as required.
 10. All Horizontal and Vertical Controls are based on Howard County Datum.



VICINITY MAP
Scale: 1"=1200'



PROFILE
Scale: Hor. 1"=100'
Vert. 1"=10'

WATER MAIN C.I.P.

| QUANTITIES | |
|---------------|--------|
| 8" Water Main | 420 LF |
| 6" Water Main | 373 LF |
| Fire Hydrants | 2 |

STAKE OUT & DIARY IN F.B. # 4662



Kenneth A. McCord

Valley Mede Section No. 8
Contract No. 370-W

| | | | | | | |
|--|--|---------------------------|--|--|---------------------------|--|
| WHITMAN, REQUARDT & ASSOCIATES ENGINEERS 1304 ST. PAUL ST. BALTIMORE, MARYLAND | DEPARTMENT OF PUBLIC WORKS HOWARD COUNTY, MARYLAND April 20, 1970 DATE | CONTRACT NO. 370-W | PLAN AND PROFILE OF WATER MAINS | ELECTION DISTRICT ELLICOTT CITY NO. 2 | DRAWING NO. 1 OF 1 | SCALE AS SHOWN 4-SW-44 4-SW-45 5-SW-46 |
|--|--|---------------------------|--|--|---------------------------|--|

W. O. G024

AS BUILT JULY 6, 1970