

WS 369-W&S/2

WHITMAN, REQUARDT & ASSOCIATES
 ENGINEERS
 1304 ST. PAUL ST.
 BALTIMORE, MARYLAND

DEPARTMENT OF PUBLIC WORKS
 HOWARD COUNTY, MARYLAND
 8-25-70
 DATE

CONTRACT NO. 369 W&S
W. O. Gilbert
 CHIEF - BUREAU OF WATER AND SEWER

PLAN OF
WATER & SEWER MAINS

ELECTION DISTRICT
GUILFORD NO. 6

DRAWING NO. 2 OF 6	SCALE 1" = 50'	491, 480
		492, 480
		491, 479
		492, 479

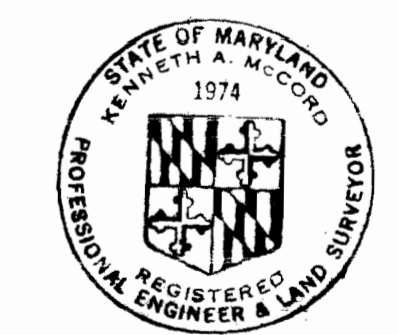
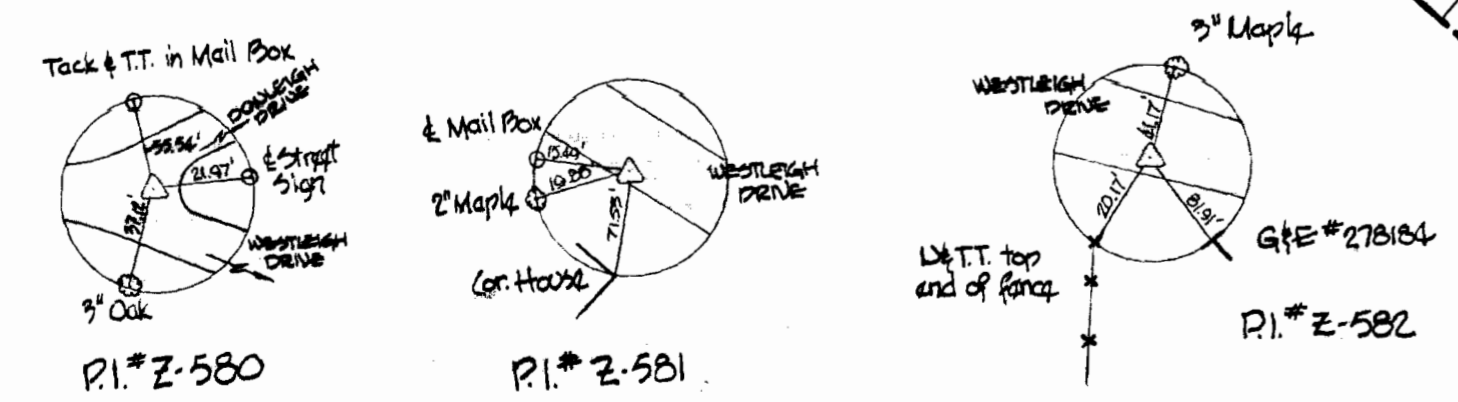
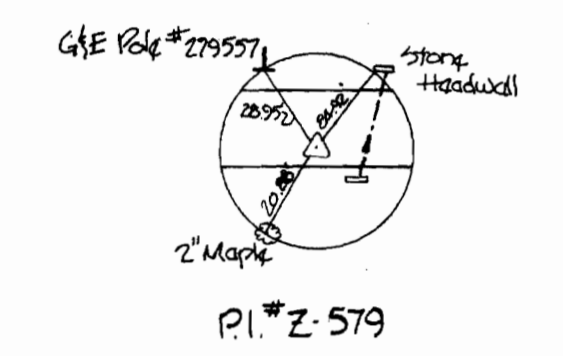
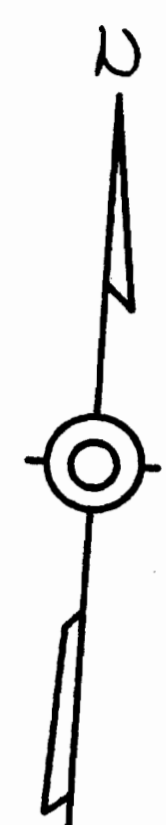
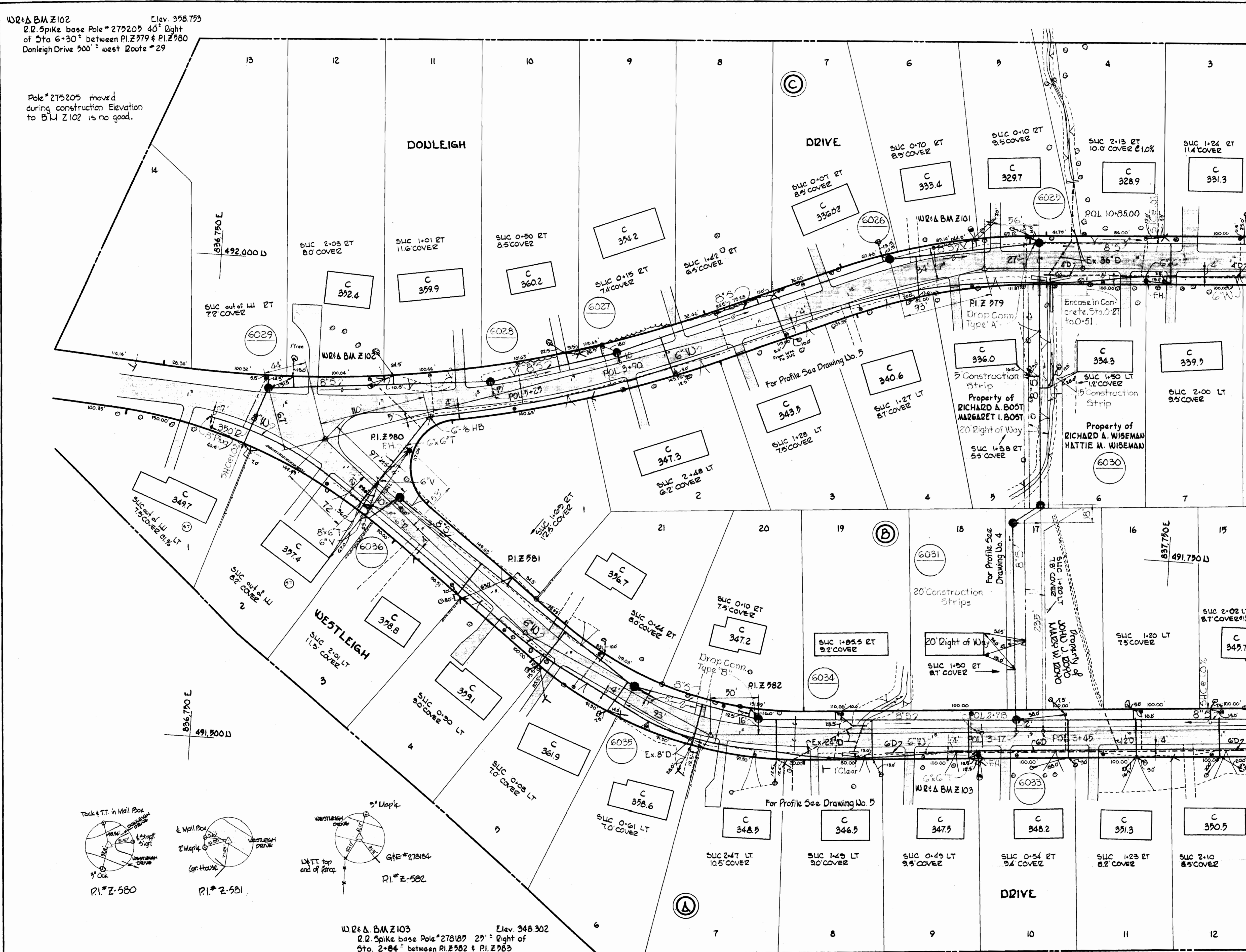
W. O. G185-2

F.B. 4621, 4681, 4697
 Nov 13 1970

W2&A BM Z102 Elev. 358.753
 2.2 Spike base Pole # 275205 40' Right
 of Sta 6+30 between PI.Z979 & PI.Z980
 Donleigh Drive 300' west Route # 29

W2&A BM Z101 Elev. 336.604
 2.2 Spike base Pole # 279597
 30' Right of PI.Z979

Pole # 275205 moved
 during construction Elevation
 to BM Z102 is no good.

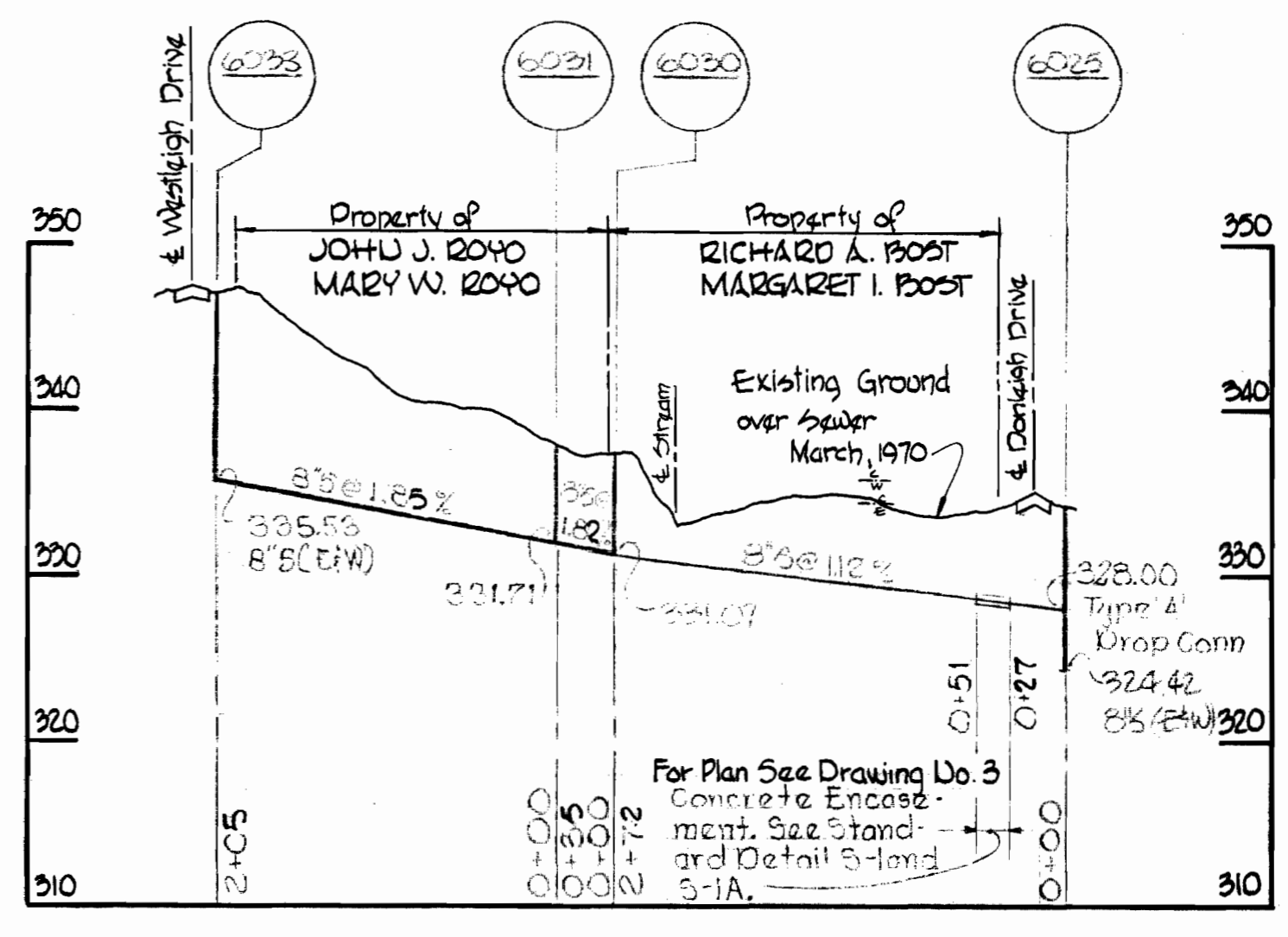
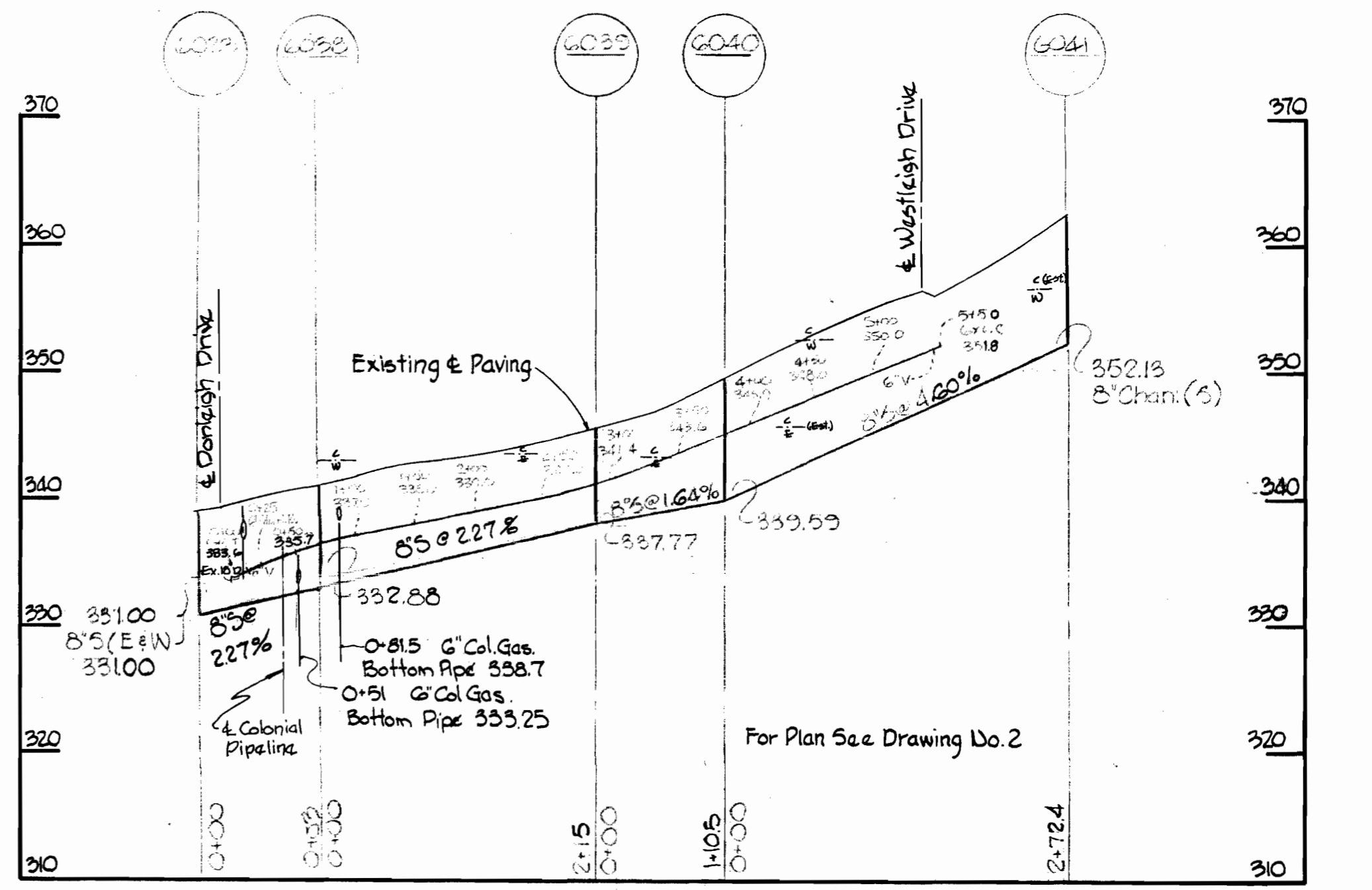
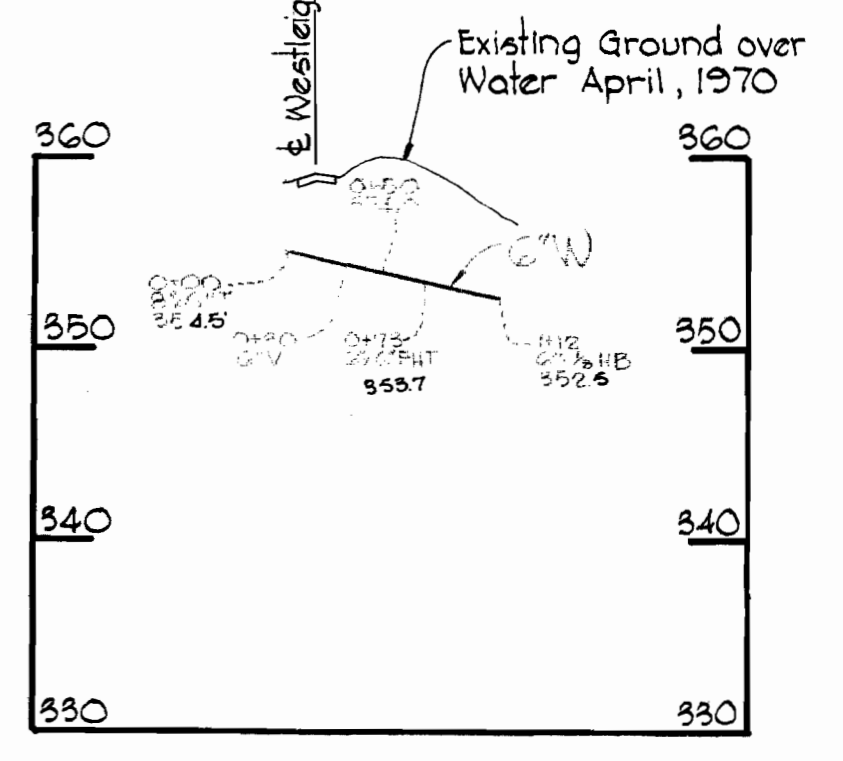
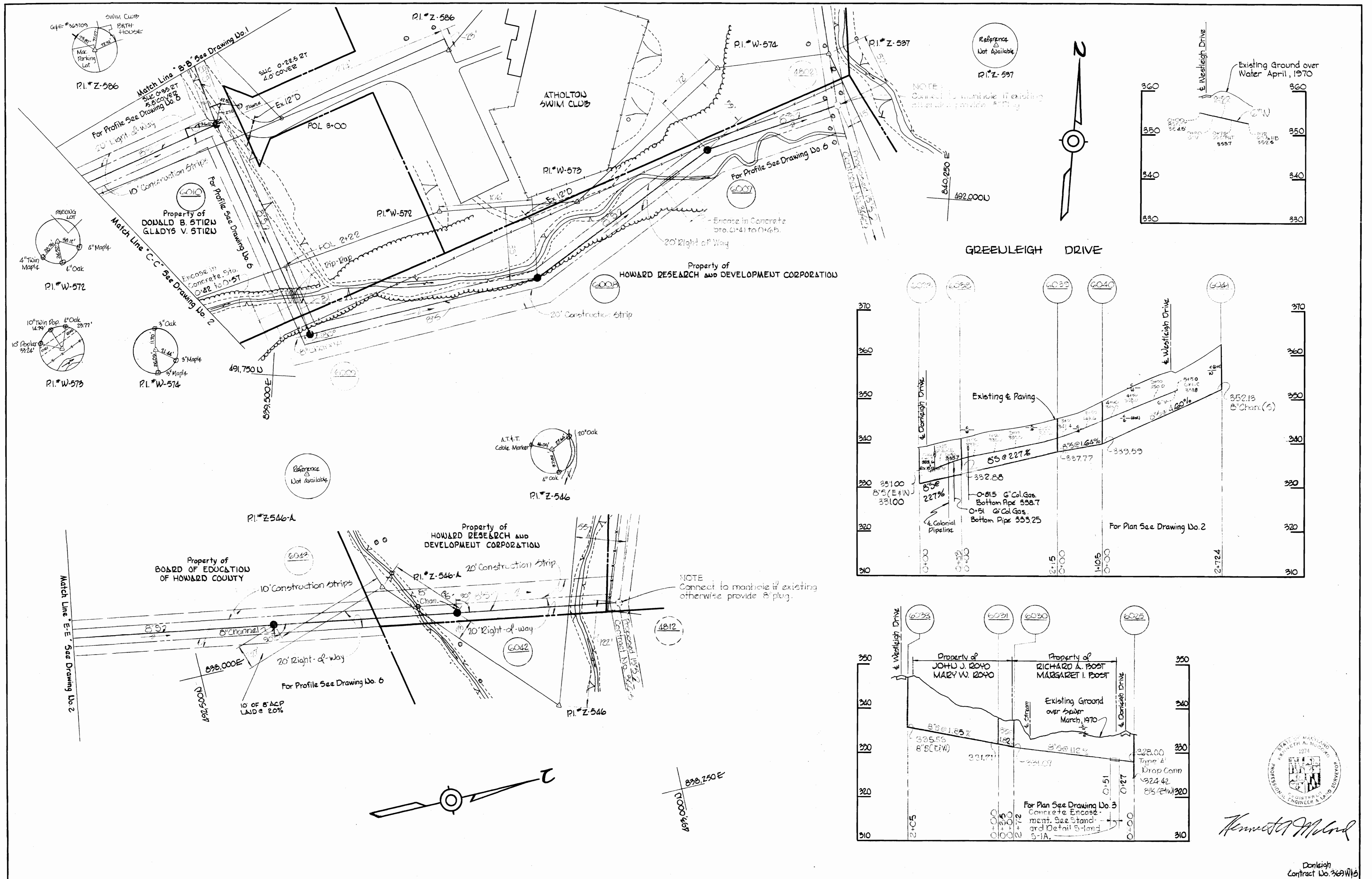


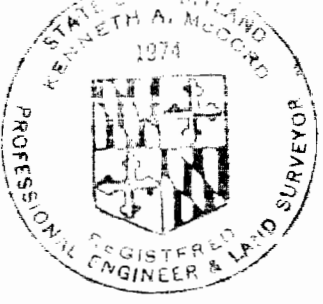
Kenneth A. McCord


W2&A BM Z103 Elev. 348.302
 2.2 Spike base Pole # 278187 25' Right of
 Sta. 2+84 between PI.Z982 & PI.Z983

WS 369-W&S/3

WHITMAN, REQUARDT & ASSOCIATES ENGINEERS 1304 ST. PAUL ST. BALTIMORE, MARYLAND	DEPARTMENT OF PUBLIC WORKS HOWARD COUNTY, MARYLAND 8-25-70 DATE	CONTRACT NO. 369 W&S CHIEF-BUREAU OF WATER AND SEWER	PLAN OF WATER & SEWER MAINS	ELECTION DISTRICT GUILFORD NO. 6	DRAWING NO. 3 OF 6	SCALE 1" = 50' 492-479 491-479
					Donleigh Contract No. 369 W&S	



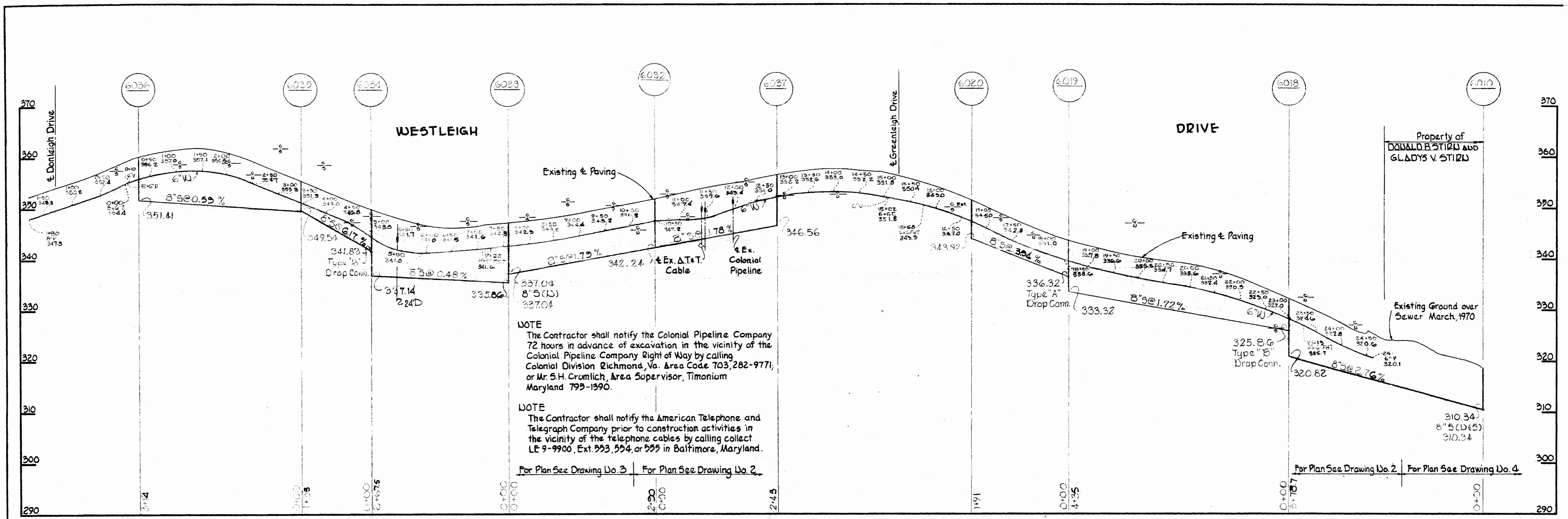

 Kenneth M. Lind
 Donleigh Contract No. 769W16

WHITMAN, REQUARDT & ASSOCIATES ENGINEERS 1304 ST. PAUL ST. BALTIMORE, MARYLAND	DEPARTMENT OF PUBLIC WORKS HOWARD COUNTY, MARYLAND 8-25-70 DATE  CHIEF-BUREAU OF WATER AND SEWER	CONTRACT NO. 369 W&S	PLAN AND PROFILES OF WATER & SEWER MAINS	ELECTION DISTRICT GUILFORD NO. 6	DRAWING NO. 4 OF 6	SCALE 1" = 50' 491-400 492-400 493-401
--	---	---------------------------------	---	---	---------------------------	--

WS 369-W&S/5

suspense

suspense

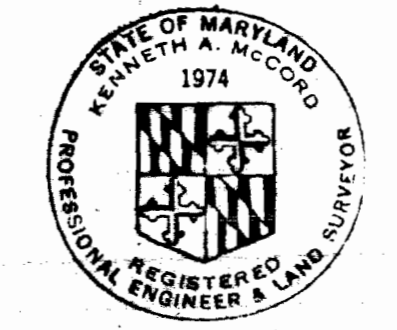
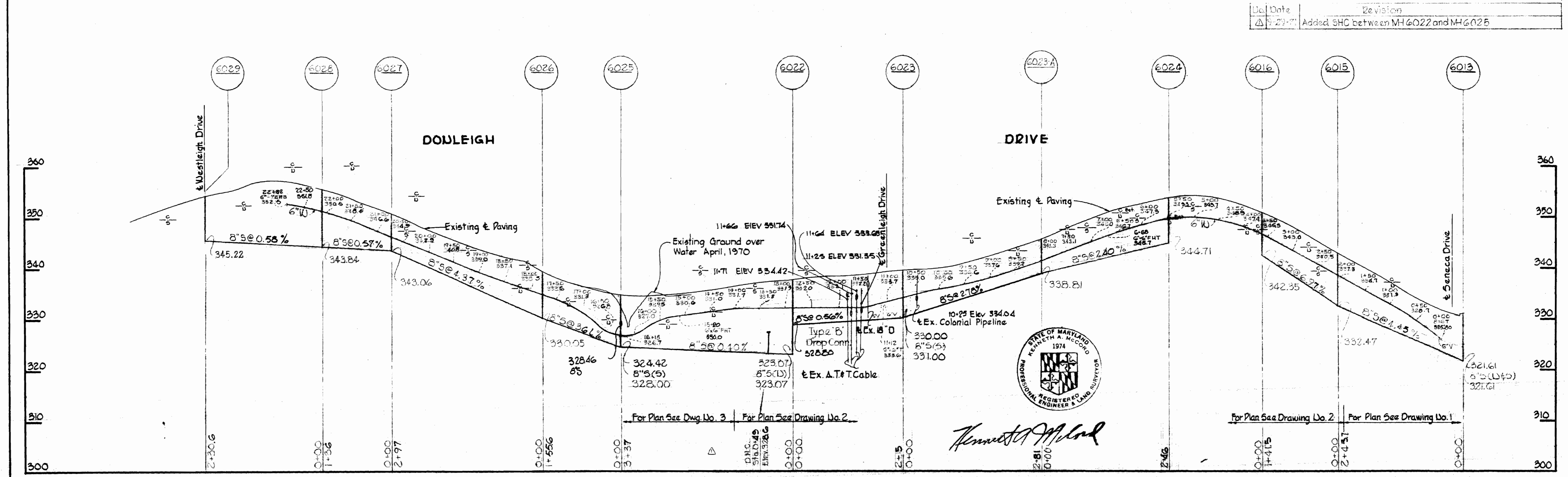


NOTE
The Contractor shall notify the Colonial Pipeline Company 72 hours in advance of excavation in the vicinity of the Colonial Pipeline Company Right of Way by calling Colonial Division Richmond, Va. Area Code 703, 282-9771; or Mr. S.H. Cromlich, Area Supervisor, Timonium Maryland 793-1390.

NOTE
The Contractor shall notify the American Telephone and Telegraph Company prior to construction activities in the vicinity of the telephone cables by calling collect LE 9-9900, Ext. 553, 554, or 555 in Baltimore, Maryland.

For Plan See Drawing No. 3 For Plan See Drawing No. 2

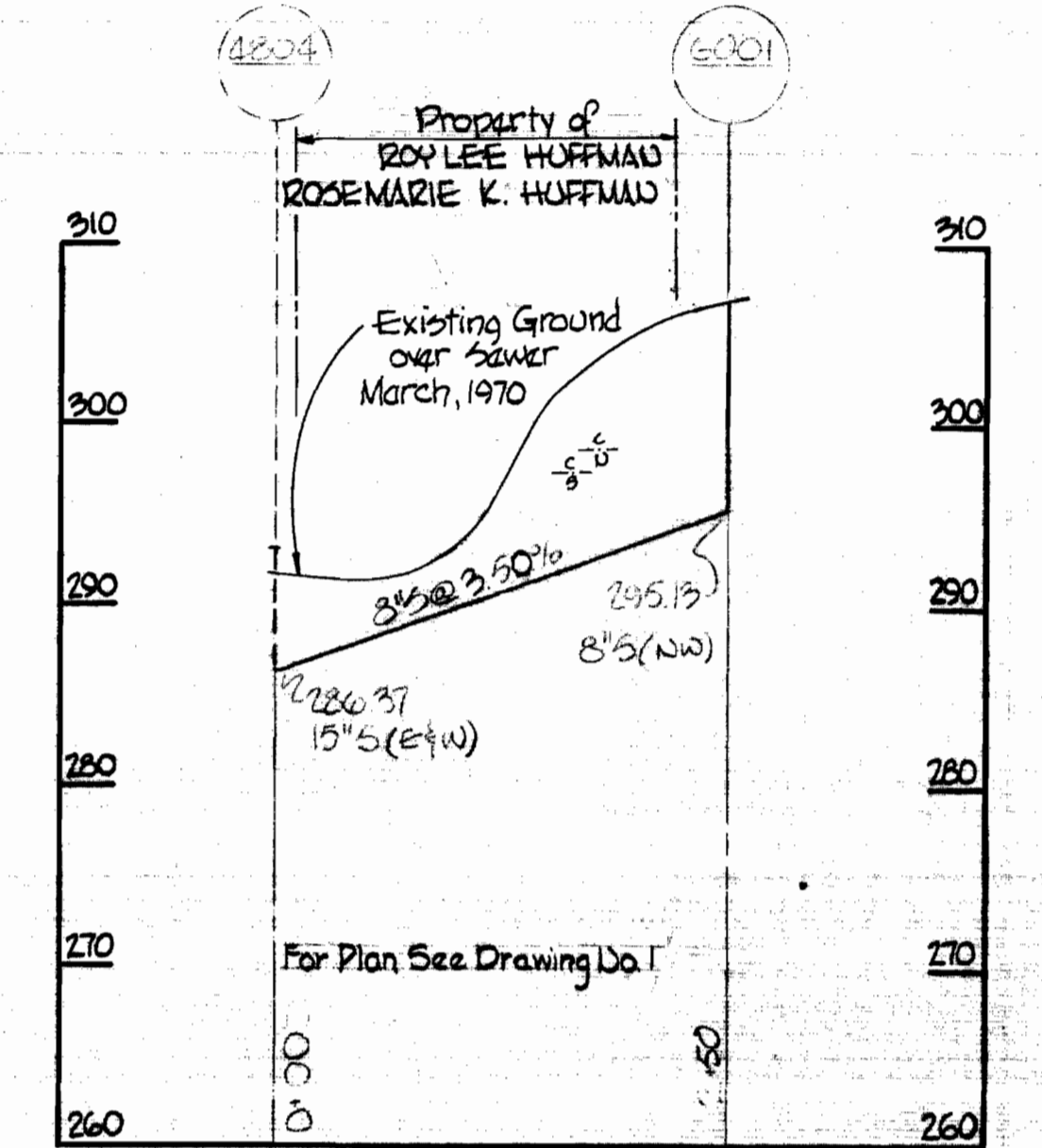
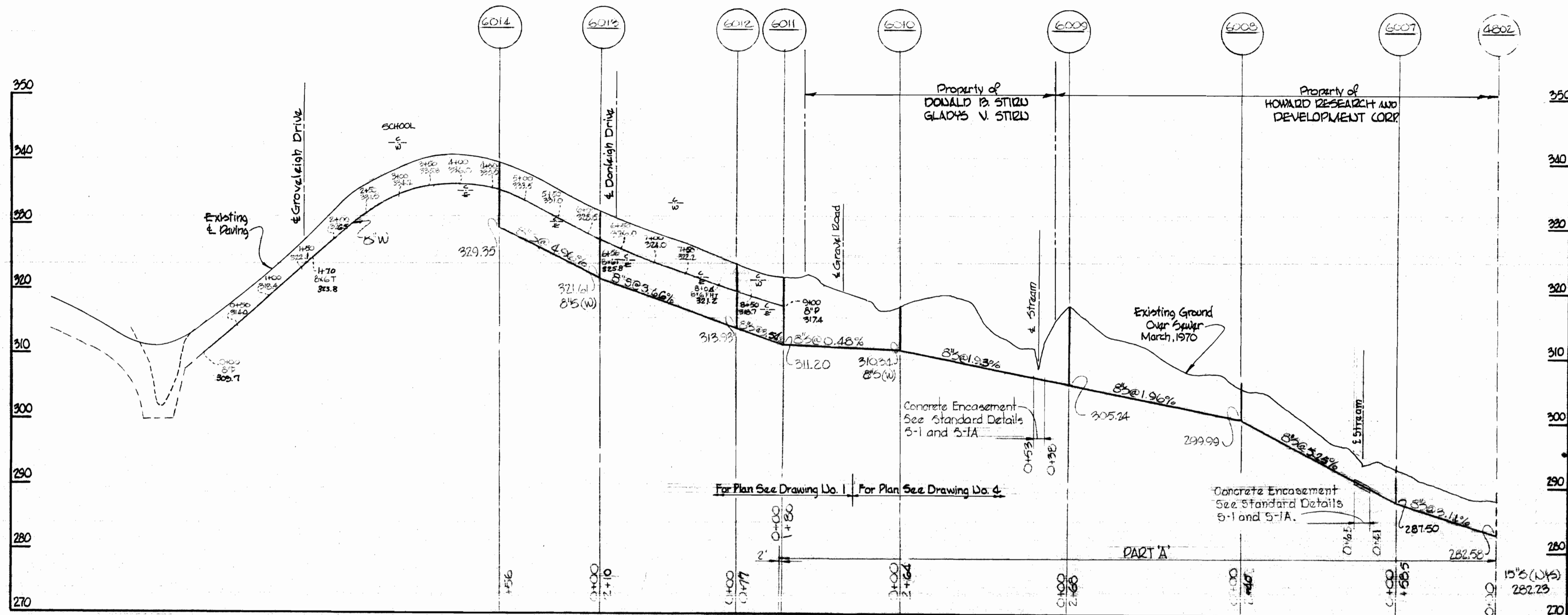
No.	Date	Revision
1	5-27-77	Added SHC between MH 6022 and MH 6025



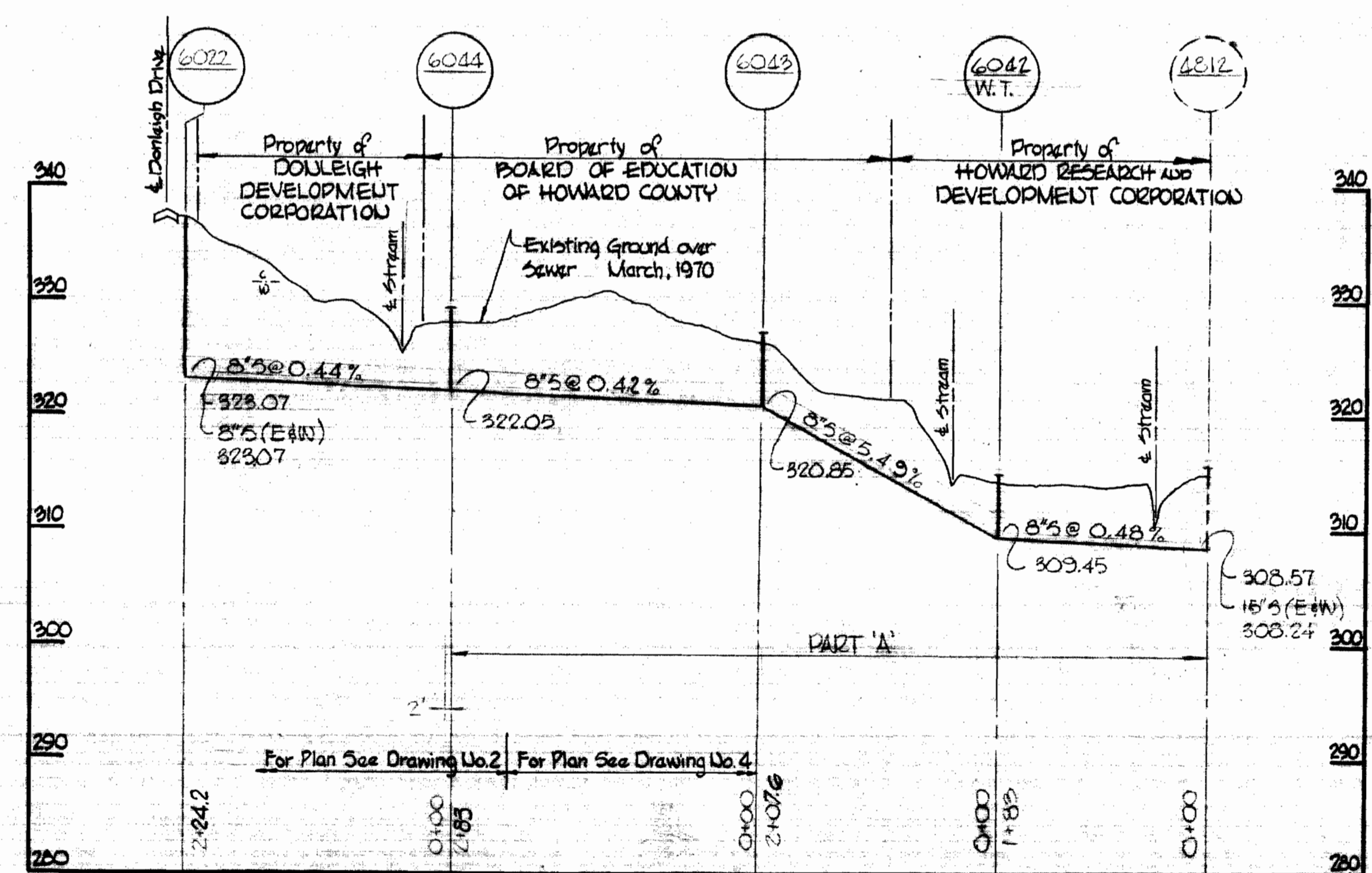
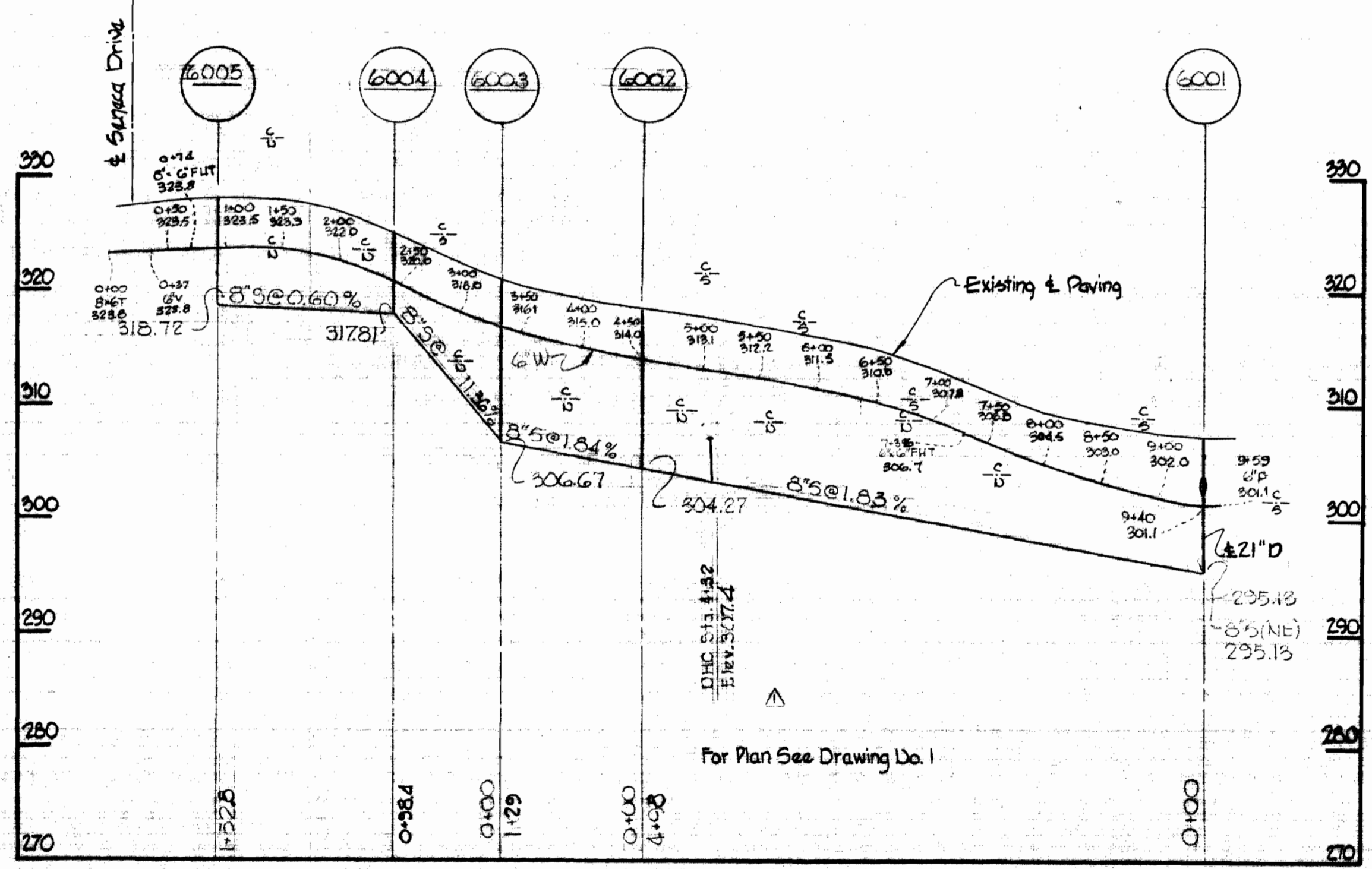
Kenneth A. McCord

WHITMAN, REQUARDT & ASSOCIATES ENGINEERS 1304 ST. PAUL ST. BALTIMORE, MARYLAND	DEPARTMENT OF PUBLIC WORKS HOWARD COUNTY, MARYLAND 8-25-70 <i>W. O. Palmer</i> CHIEF-BUREAU OF WATER AND SEWER	CONTRACT NO. 369 W&S	PROFILES OF WATER & SEWER MAINS	ELECTION DISTRICT GUILFORD NO. 6	DRAWING NO. 5	SCALE H: 1"=100'
					OF 6	V: 1"=10'

SEVECA DRIVE

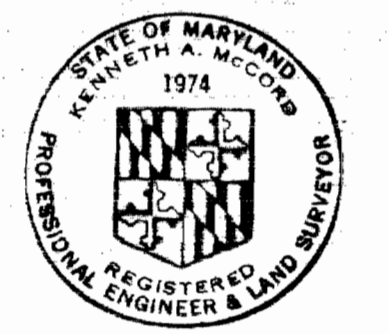


GROVELEIGH DRIVE



No.	Date	Revision
1	9-27-71	Added DHC between MH# 6001 and MH# 6002

Note: MH# 6042 shall have water tight frames and cover and set 0'-6" above existing ground.



Kenneth A. McLeod

WHITMAN, REQUARDT & ASSOCIATES ENGINEERS 1304 ST. PAUL ST. BALTIMORE, MARYLAND	DEPARTMENT OF PUBLIC WORKS HOWARD COUNTY, MARYLAND R-25-70 DATE	CONTRACT NO. 369 W&S W. O. Filbert CHIEF - BUREAU OF WATER AND SEWER	PROFILES OF WATER & SEWER MAINS	ELECTION DISTRICT GUILFORD NO. 6	DRAWING NO. 6	SCALE H:1"=100'
					OF 6	V:1 1/2"=10'