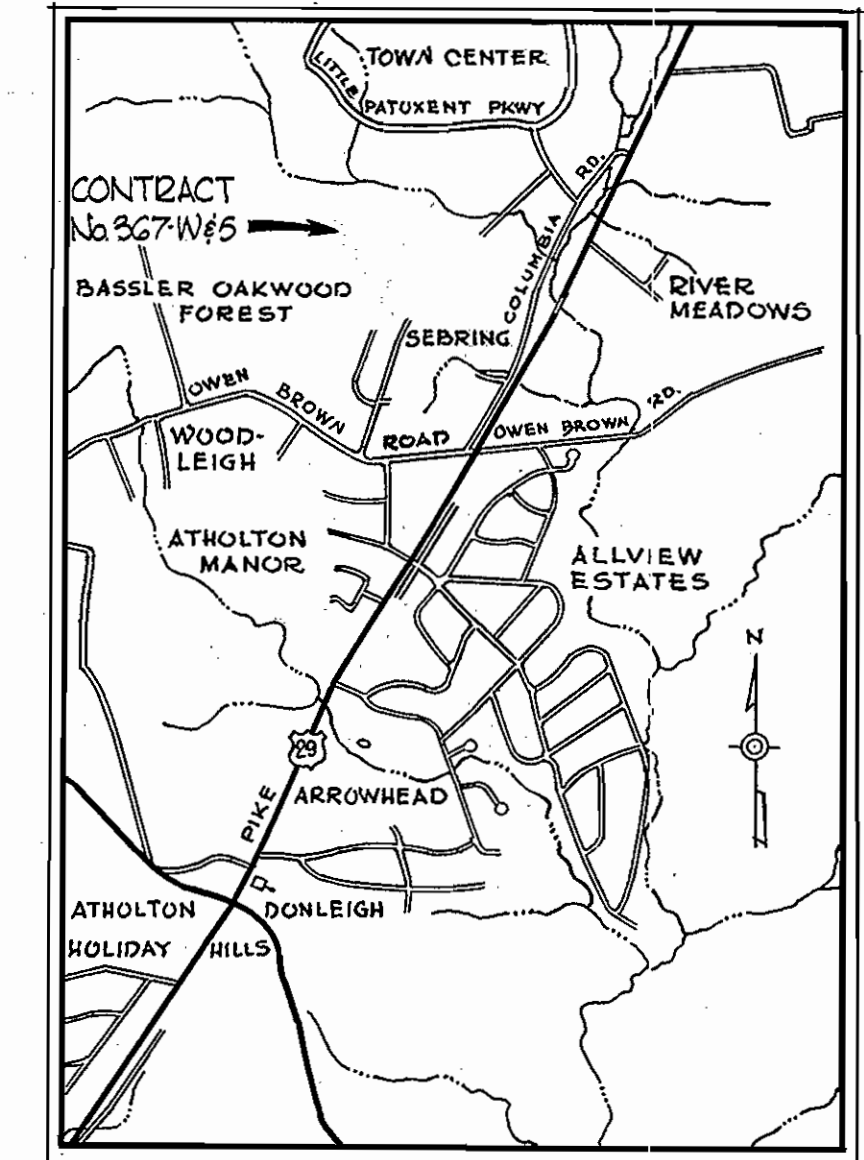


W.P. & A. B.M. #1 Elev. 873.12
 2.2. Spike base 10' Locust
 5' = Right of PI # Z-592

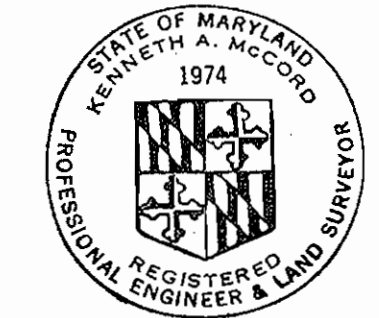
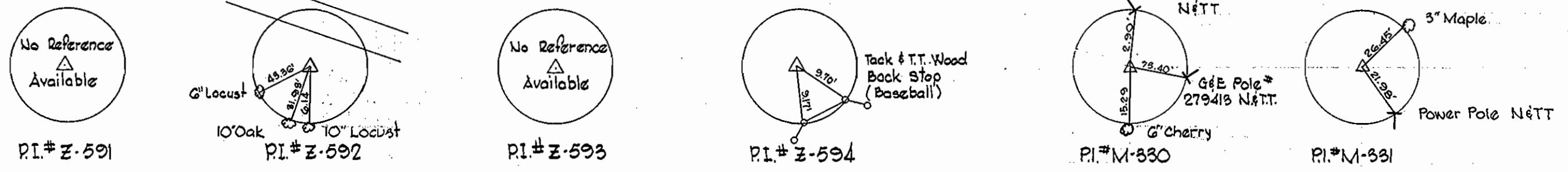
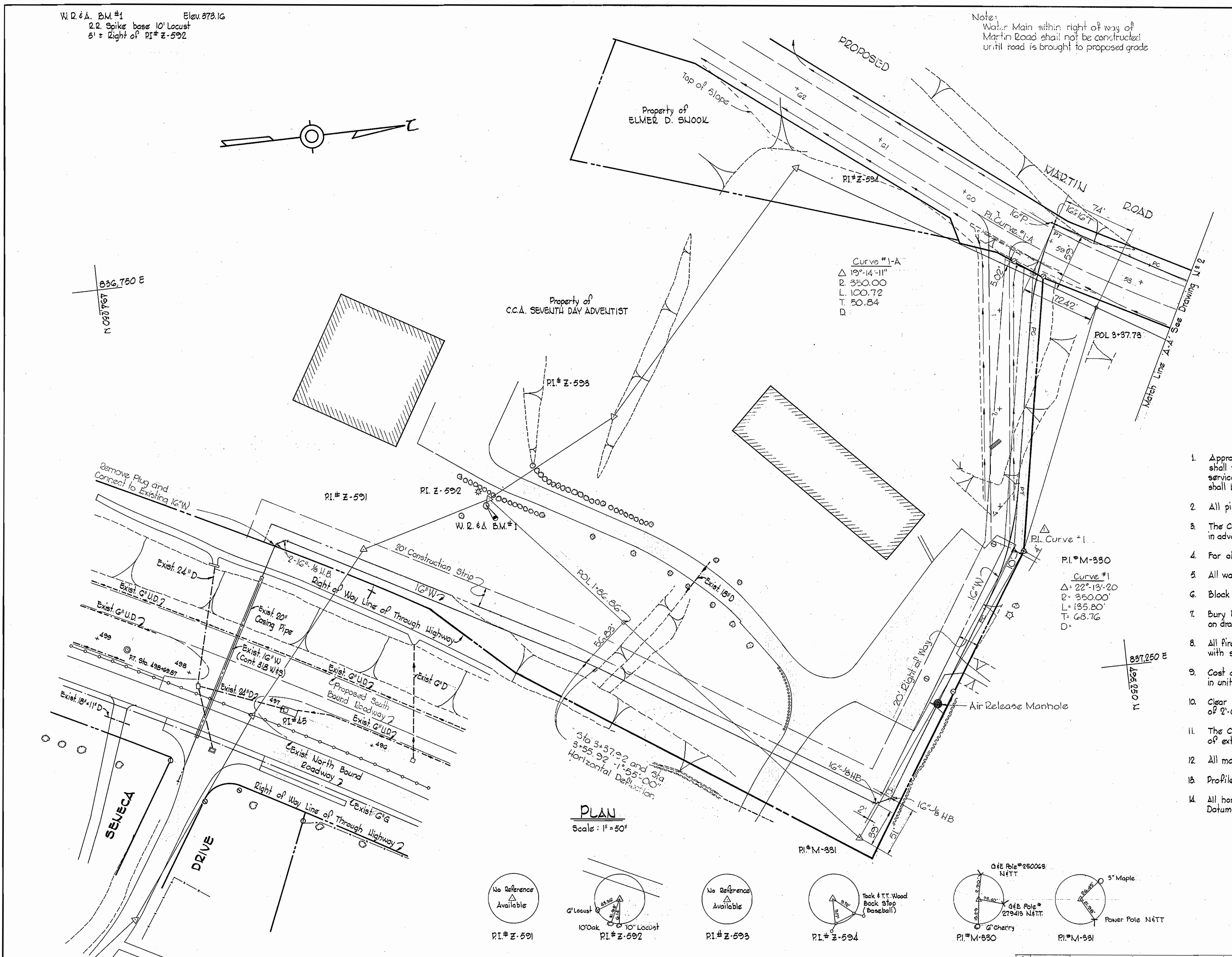
Note:
 Water Main within right of way of
 Martin Road shall not be constructed
 until road is brought to proposed grade



VICINITY MAP
 Scale: 1" = 1/2 Mile

GENERAL NOTES

1. Approximate location of existing mains are shown. The Contractor shall take all necessary precautions to protect existing mains and services and maintain uninterrupted supply. Any damage incurred shall be repaired immediately.
2. All pipe elevations shown are invert elevations.
3. The Contractor shall locate existing utilities a minimum of two weeks in advance of construction operations in vicinity of utilities.
4. For all standard details see standards bound in Specifications.
5. All water mains shall have a minimum of 3 1/2' of cover.
6. Block all fittings with concrete, see standards bound in Specifications.
7. Bury Line elevations on fire hydrants shall be set to elevations shown on drawings or as directed by the Engineer in the field.
8. All fire hydrants shall be strapped and buttressed in accordance with standard details.
9. Cost of strapping fire hydrants and valves to trees to be included in unit price bid for furnishing and installing fire hydrants.
10. Clear all utilities by a minimum of 6". Clear all poles by a minimum of 2'-0" or tunnel as required.
11. The Contractor shall provide a joint in all sewer mains within 2'-0" of exterior Manhole walls.
12. All manholes shall be 4'-0" inside diameter.
13. Profile stations shall be adjusted to conform with plan dimensions.
14. All horizontal and vertical controls are based on Maryland State Datum.



Stakeout F.B. # 4830
 Diary F.B. # 4832

Kenneth A. McCord

9-23-70	Revised Water Main Alignment
No.	Date:
	Revision

Sebring
 Contract No. 367 W&S

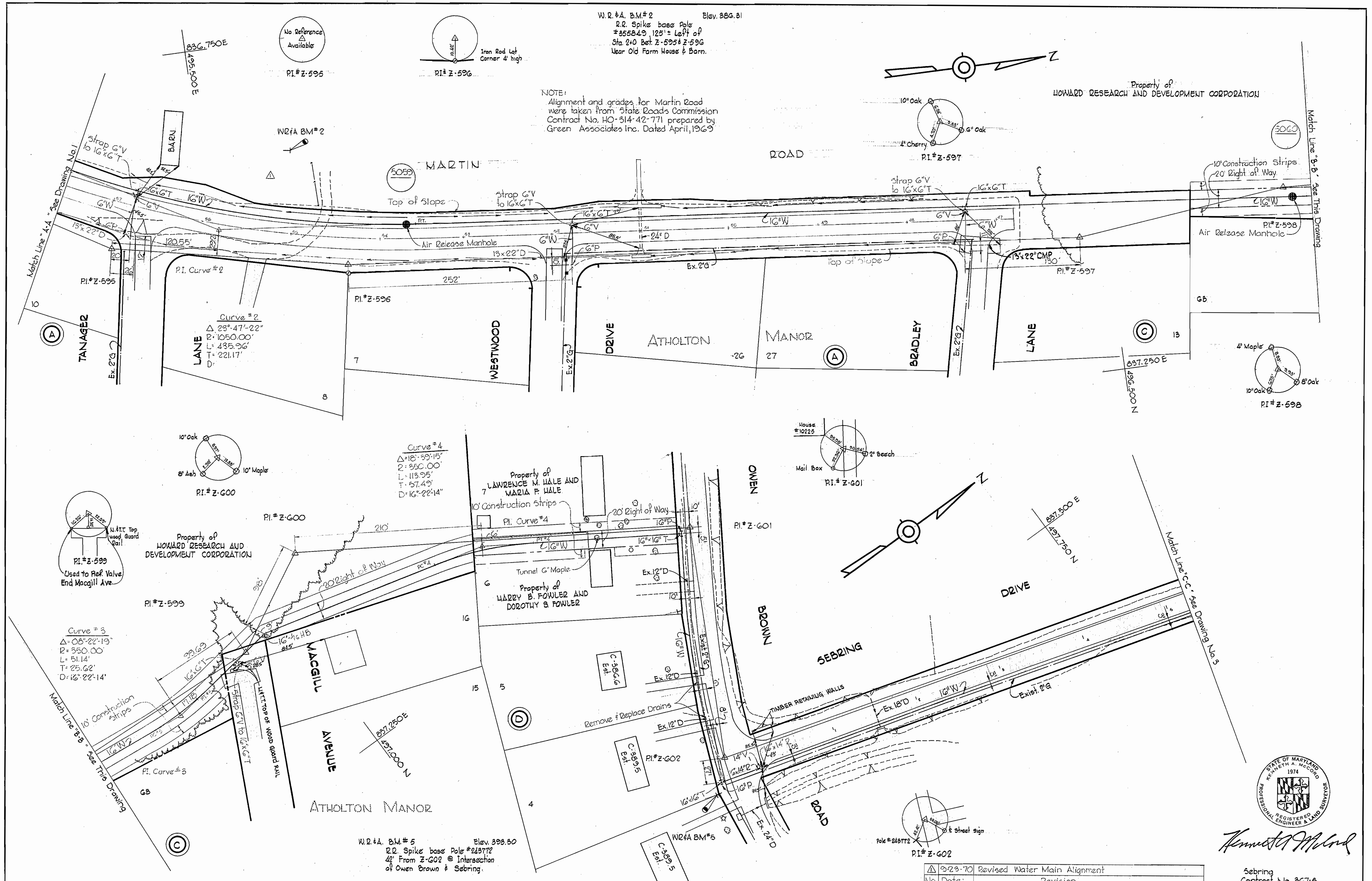
WHITMAN, REQUARDT & ASSOCIATES ENGINEERS 1304 ST. PAUL ST. BALTIMORE, MARYLAND	DEPARTMENT OF PUBLIC WORKS HOWARD COUNTY, MARYLAND DATE: 7-17-70 CHIEF-BUREAU OF WATER AND SEWER	CONTRACT NO. 367 W&S	PLAN OF WATER AND SEWER MAINS	ELECTION DISTRICT CLARKVILLE NO. 5	DRAWING NO. 1 OF 8	SCALE AS SHOWN
					494, 479 495, 479	

AS BUILT AUGUST 31, 1971 FB# 4831, 4640, 4644

NS 367-W&S/1

W. O. C185-2

WS 367-W&S/2



WHITMAN, REQUARDT & ASSOCIATES
ENGINEERS
1304 ST. PAUL ST.
BALTIMORE, MARYLAND

DEPARTMENT OF PUBLIC WORKS
HOWARD COUNTY, MARYLAND
7-1-70
DATE

CONTRACT NO. 367 W&S

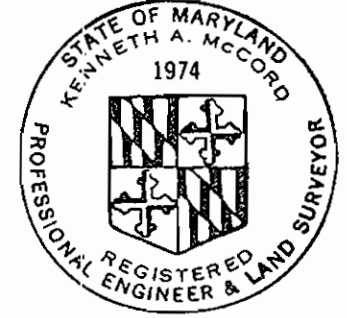
PLAN OF
WATER & SEWER MAINS

ELECTION DISTRICT
CLARKVILLE NO. 5

DRAWING NO. 2 OF 8
SCALE 1" = 50'

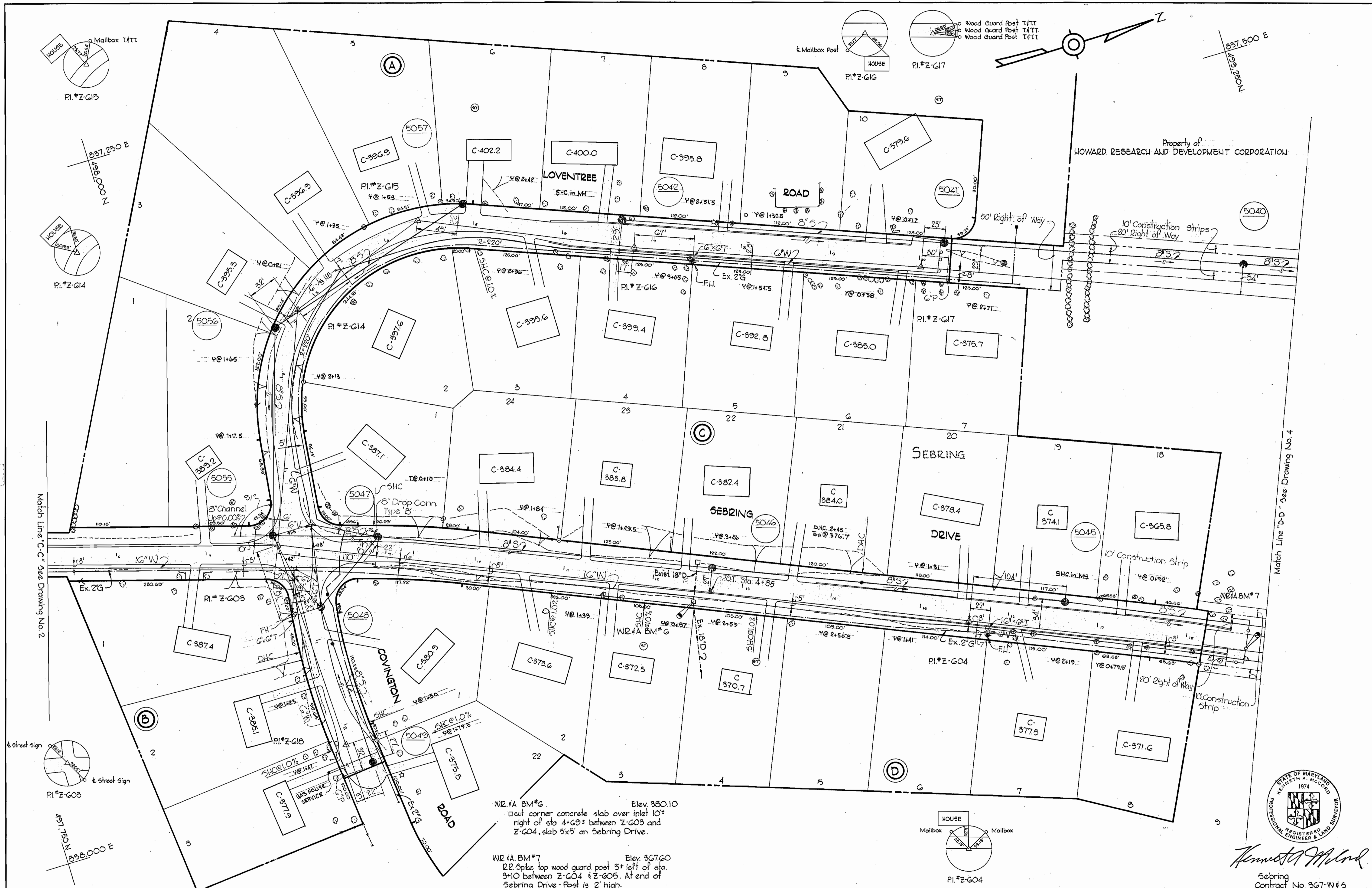
Revised Water Main Alignment	Revision
No. 2	Date:

Sebring Contract No. 367-5



Kenneth A. McCord

WS 367-W&S/3



W2 #A BM*6 Elev. 360.10
 10' cut corner concrete slab over inlet 10'
 right of sta 4+69+ between Z-G03 and
 Z-G04, slab 5x5' on Sebring Drive.

W2 #A BM*7 Elev. 367.60
 2" spike top wood guard post 3' left of sta.
 3+10 between Z-G04 & Z-G05. At end of
 Sebring Drive - Post is 2' high.

WHITMAN, REQUARDT & ASSOCIATES
 ENGINEERS
 1304 ST. PAUL ST.
 BALTIMORE, MARYLAND

DEPARTMENT OF PUBLIC WORKS
 HOWARD COUNTY, MARYLAND
 DATE 7-1-70
W. O. P. Webb
 CHIEF-BUREAU OF WATER AND SEWER

CONTRACT NO. 367 W&S

PLAN OF
 WATER & SEWER MAINS

ELECTION DISTRICT
 CLARKSVILLE NO. 5

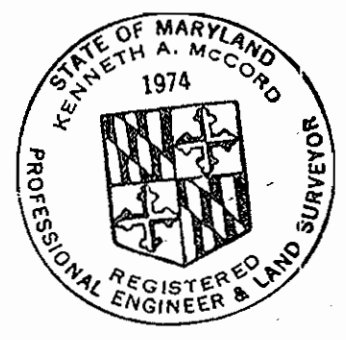
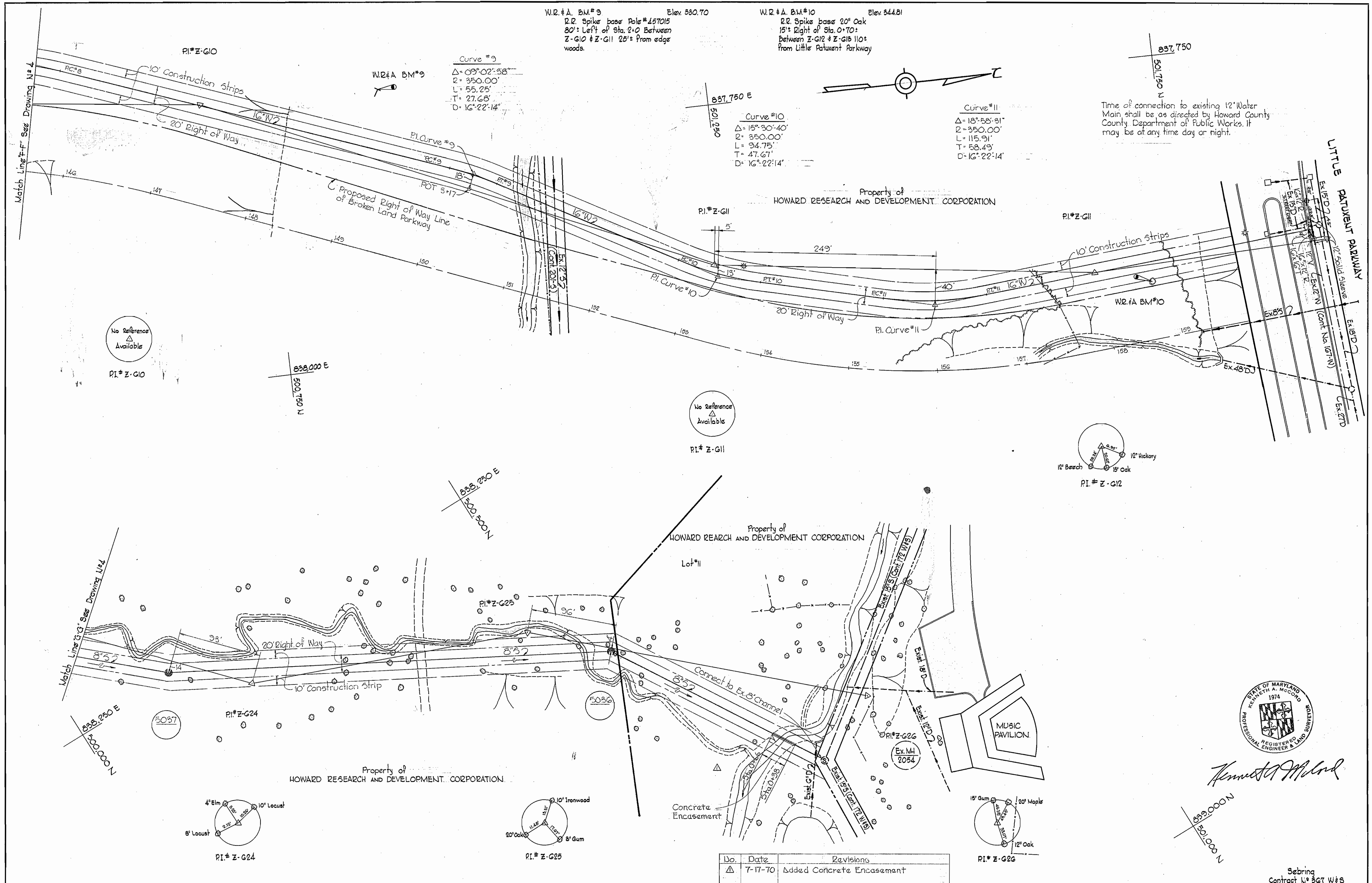
Sebring
 Contract No. 367-W#3

DRAWING NO.	SCALE
3 OF 8	1" = 50'



Kenneth A. McCord

WS 367-W&S/S

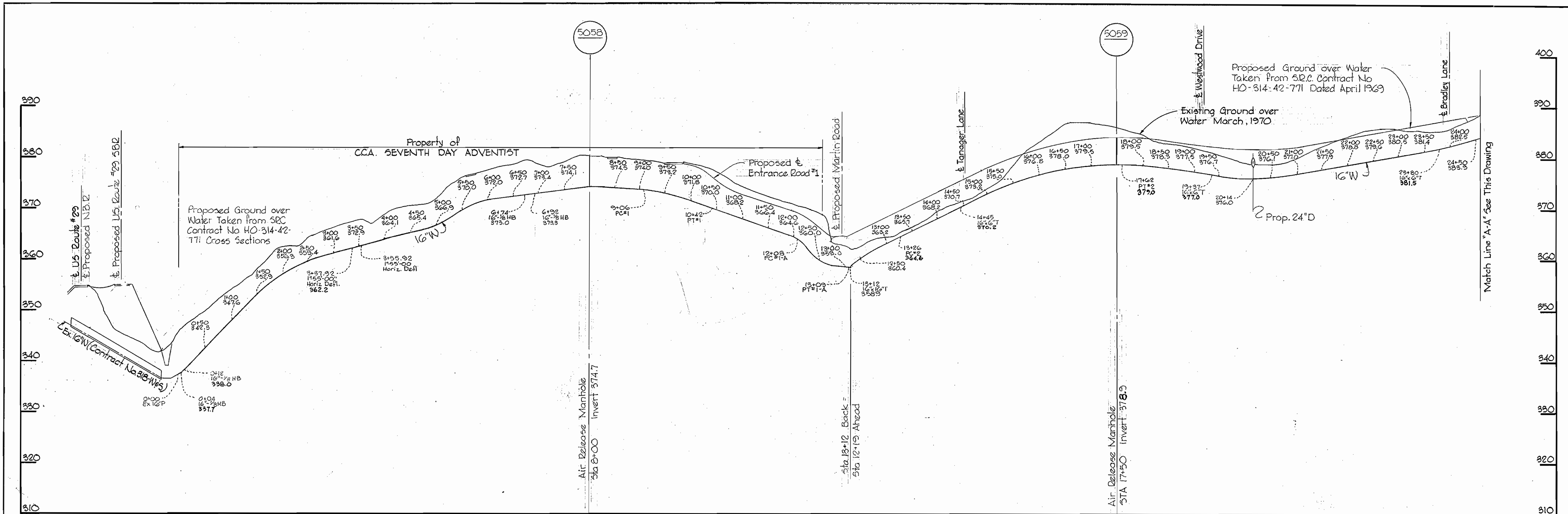


Kenneth A. McLeod

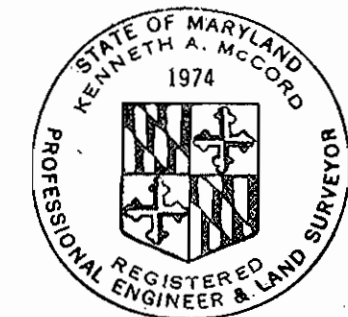
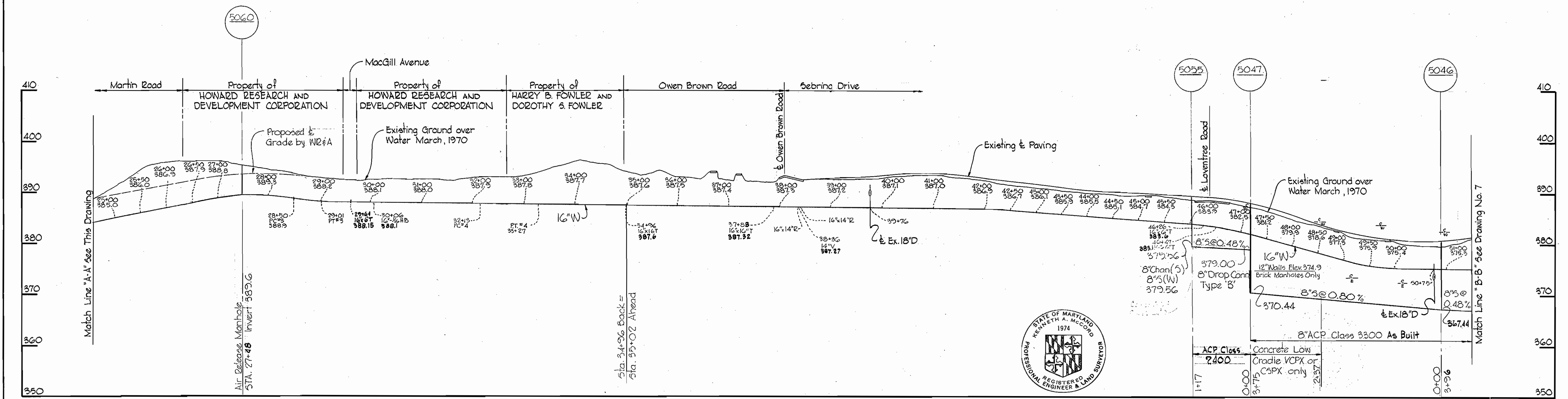
No.	Date	Revisions
1	7-17-70	Added Concrete Encasement

WHITMAN, REQUARDT & ASSOCIATES ENGINEERS 1304 ST. PAUL ST. BALTIMORE, MARYLAND	DEPARTMENT OF PUBLIC WORKS HOWARD COUNTY, MARYLAND 7-1-70 <i>W. O. Gilbert</i> CHIEF-BUREAU OF WATER AND SEWER	CONTRACT NO. 367 W&S	PLAN OF WATER & SEWER MAINS	ELECTION DISTRICT CLARKSVILLE NO. 5	DRAWING NO. <u>5</u> OF <u>8</u>	SCALE 1" = 50' 501-479 500-480 500-479
					Scribing Contract No. 367 W&S	

WS 367-W&S/6



All Water pipe: Ductile Iron Water Pipe



Kenneth A. McCord

10-7-70 Revised Water Profile from 0+00 to 13+00
 No. Date Revision

WHITMAN, REQUARDT & ASSOCIATES
 ENGINEERS
 1304 ST. PAUL ST.
 BALTIMORE, MARYLAND

DEPARTMENT OF PUBLIC WORKS
 HOWARD COUNTY, MARYLAND
 7-1-70
 W. O. Gilbert
 CHIEF-BUREAU OF WATER AND SEWER

CONTRACT NO. 367 W&S

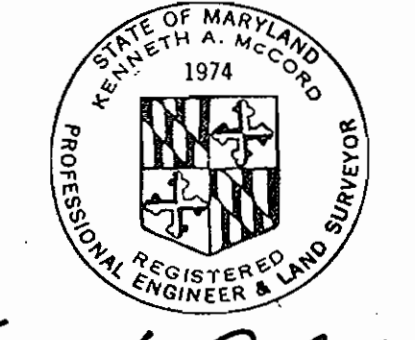
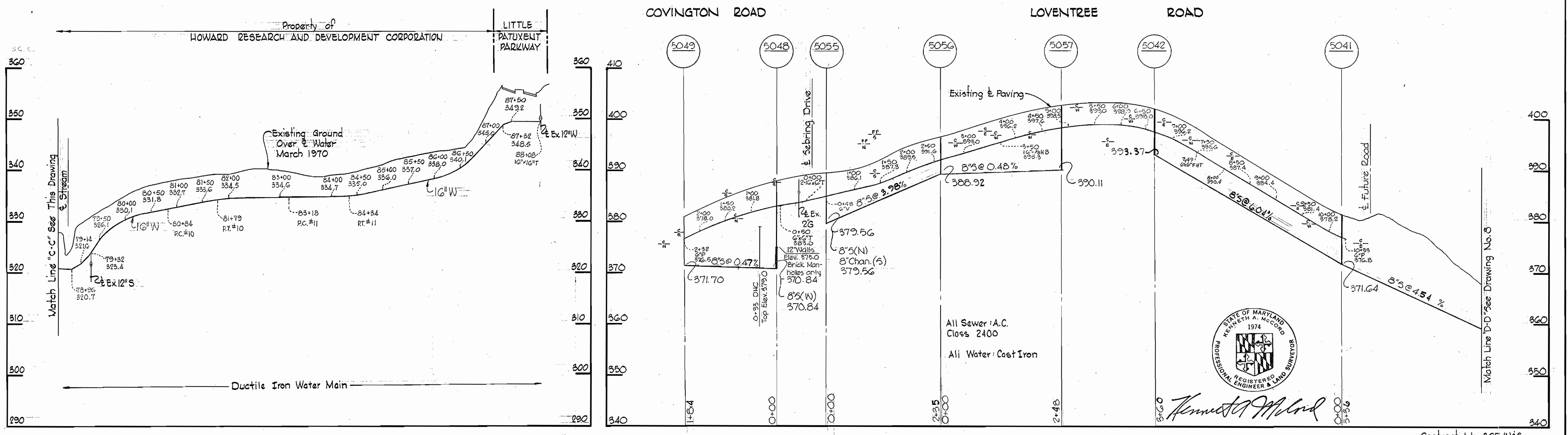
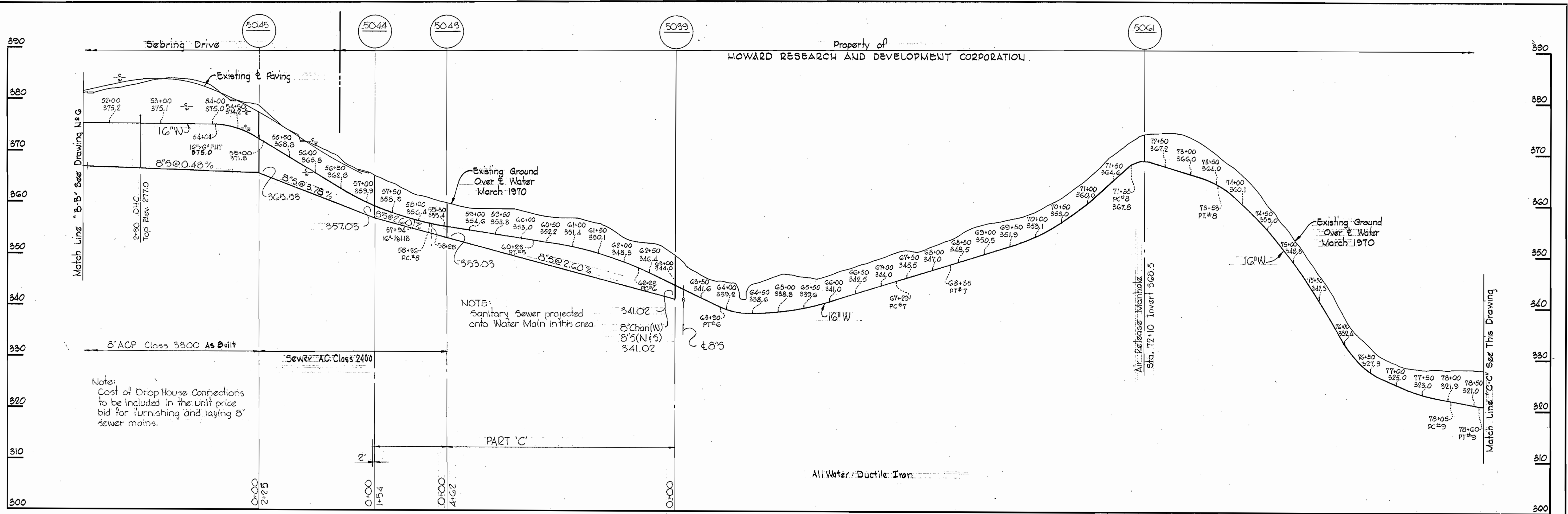
PROFILE OF
 WATER & SEWER MAINS

ELECTION DISTRICT
 CLARKSVILLE NO. 5

Sebring
 Contract No. 367-W&S
 DRAWING NO. 6 OF 8
 SCALE H=1"=100' V=1"=10'
 AS BUILT AUGUST 31, 1971

W. O. Gilbert

WS 367-W&S/7



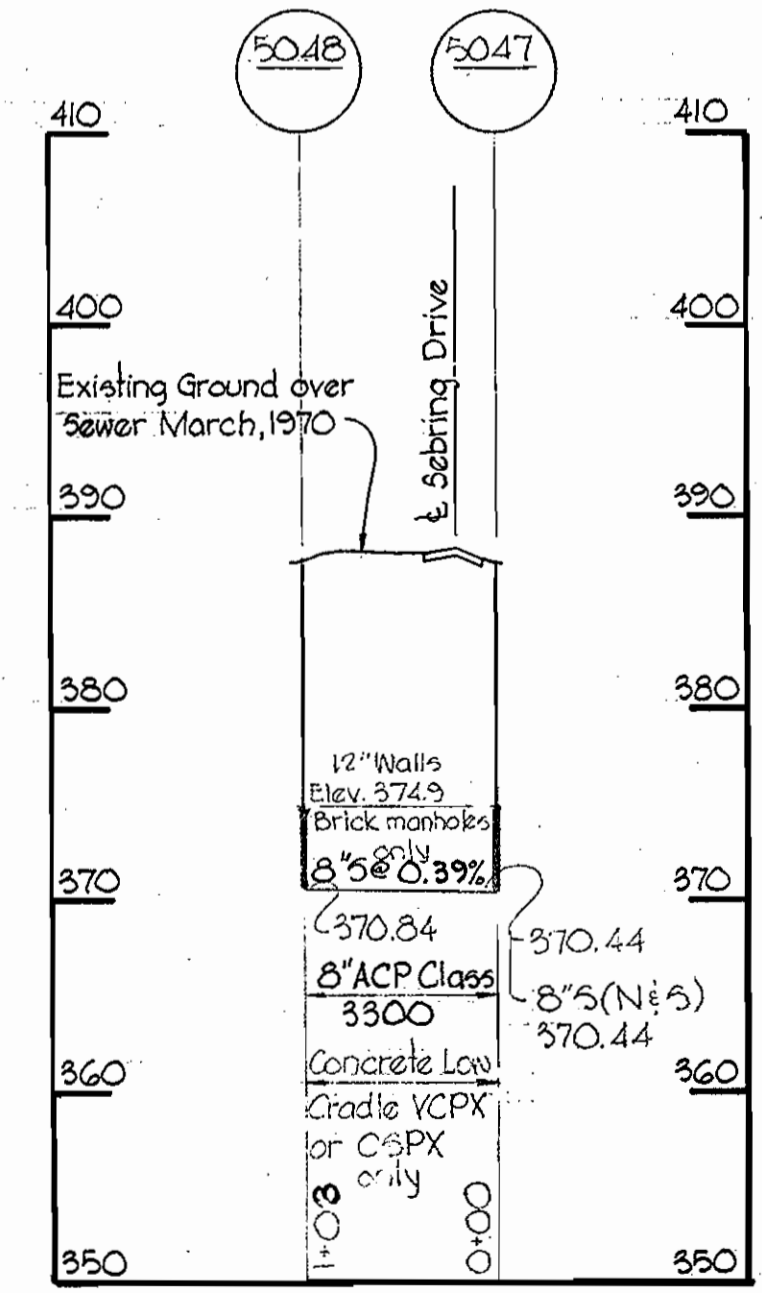
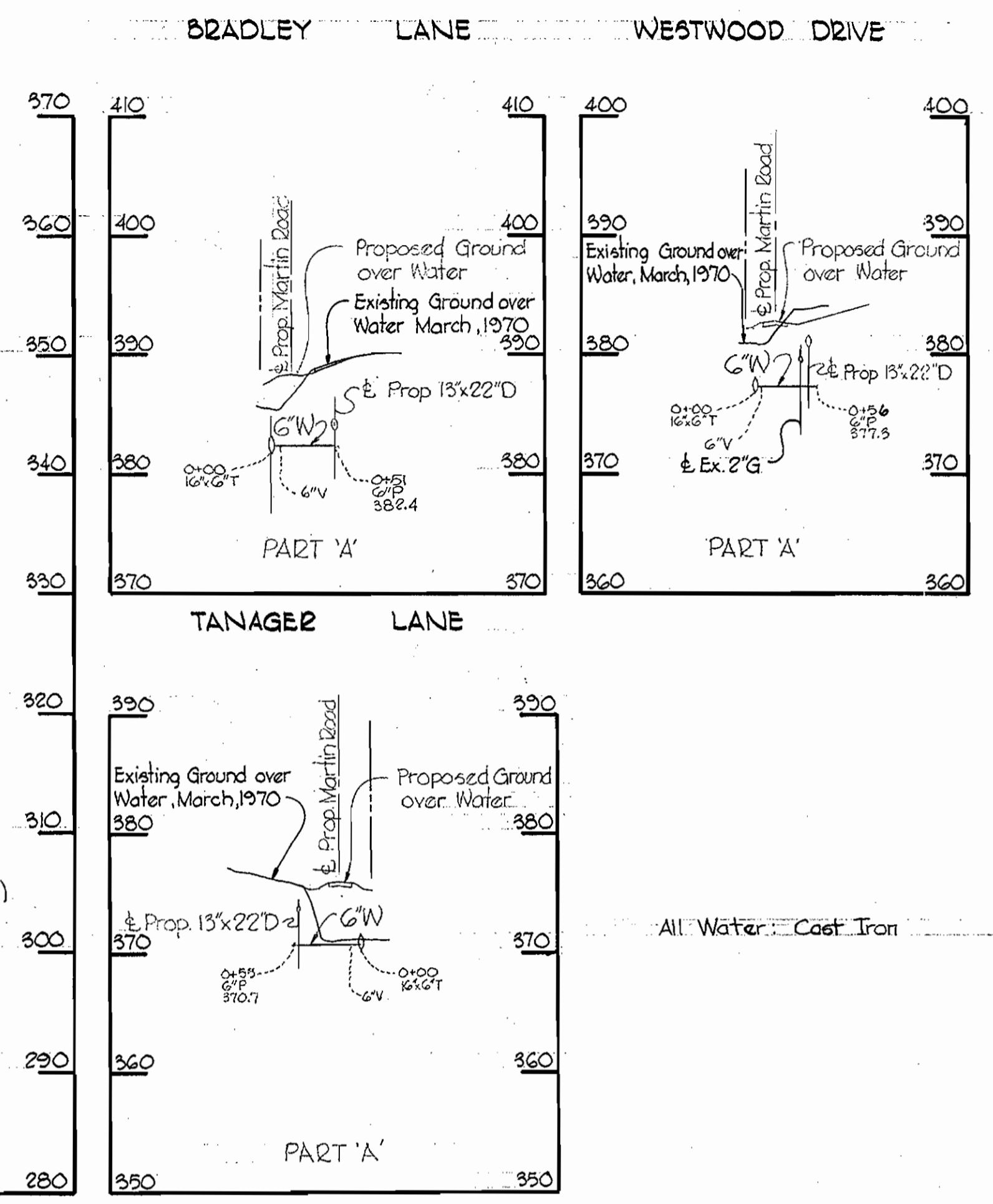
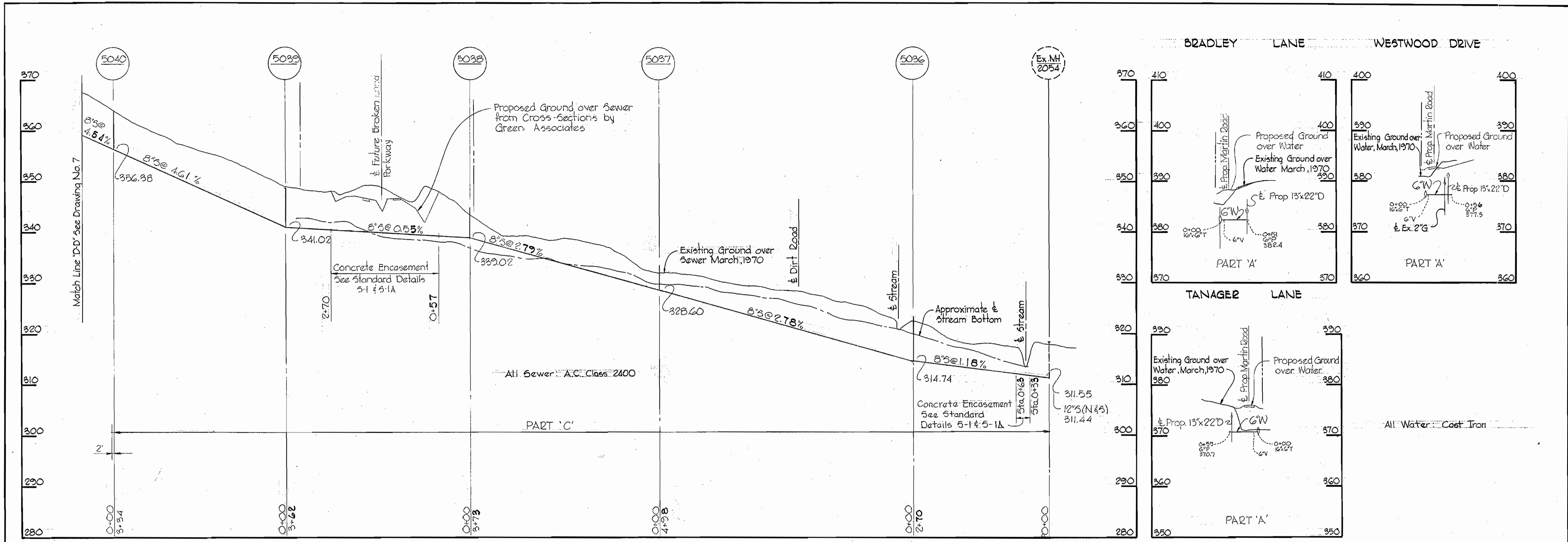
Kenneth A. McLeod

WHITMAN, REQUARD & ASSOCIATES ENGINEERS 1304 ST. PAUL ST. BALTIMORE, MARYLAND	DEPARTMENT OF PUBLIC WORKS HOWARD COUNTY, MARYLAND DATE: 7-1-70 <i>W. O. Fallert</i> CHIEF-BUREAU OF WATER AND SEWER	CONTRACT NO. 367 W&S	PROFILE OF WATER & SEWER MAINS	ELECTION DISTRICT CLARKSVILLE NO. 5	Contract No. 367-W&S
					DRAWING NO. 7 OF 8

W. O. 6/85-2

AS BUILT AUGUST 31, 1971

WS 367-W&S/8



Do.	Date	Revisions
Δ	7-17-70	Added Concrete Encasement



Kenneth A. McCord

Sebring Contract No. 367 W&S

WHITMAN, REQUARDT & ASSOCIATES ENGINEERS 1304 ST. PAUL ST. BALTIMORE, MARYLAND	DEPARTMENT OF PUBLIC WORKS HOWARD COUNTY, MARYLAND DATE: <u>7-1-70</u> <i>W. O. Falwell</i> CHIEF-BUREAU OF WATER AND SEWER	CONTRACT NO. 367-W&S	PROFILE OF WATER & SEWER MAINS	ELECTION DISTRICT CLARKVILLE NO. 5	DRAWING NO. 8 OF 8	SCALE H:1"=100' V:1"=10'
--	---	---------------------------------	---	--	---------------------------	---------------------------------

W. O. 6185-2

AS BUILT AUGUST 31, 1971