

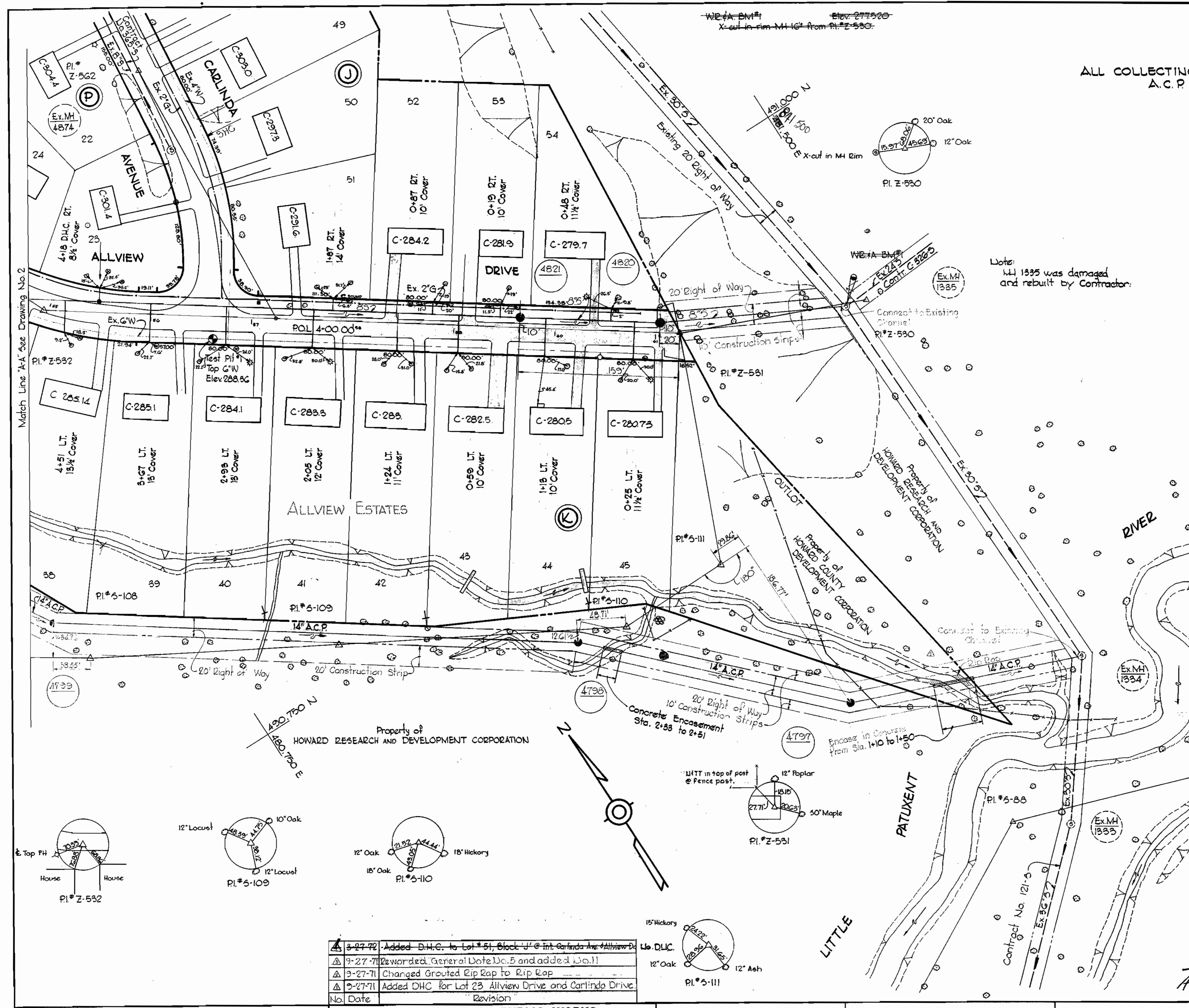
VICINITY MAP
Scale: 1" = 1/2 Mile

GENERAL NOTES

1. Approximate location of existing mains are shown. The Contractor shall take all necessary precautions to protect existing mains and services and maintain uninterrupted supply. Any damage incurred shall be repaired immediately.
2. All pipe elevations shown are invert elevations.
3. The Contractor shall locate existing utilities a minimum of two weeks in advance of construction operations in vicinity of utilities.
4. For all standard details see standards bound in Specifications.
5. All horizontal and vertical controls are in Maryland State Datum.
6. All manholes shall be 4'-0" inside diameter.
7. Clear all utilities by a minimum of 6', clear all poles by 2'-0" minimum or tunnel as required.
8. Cost of Rip-Rap to be included in the unit price bid for furnishing and laying of sewer pipe.
9. The Contractor shall provide a joint in each sewer main within 2'-0" of exterior manhole walls.
10. For Rip-Rap Detail see Drawing No. 8.
11. Manholes designated "WT" in profiles shall have water tight frames and covers. These manholes shall be set 6" above existing ground.

ALL COLLECTING SEWER
A.C.P.

Note:
MH 1335 was damaged
and rebuilt by Contractor.



Kenneth A. McLeod

AS BUILT
STAKEOUT & DIARY #2, FB#5125
DIARY #1, FB#5126

Allview Interceptor and
Collecting Sewers
Contract No. 366-S

No.	Date	Revision
3-27-70		Added D.H.C. to Lot #51, Block 'J' @ Int. Carlinda Ave. & Allview Dr.
3-27-70		Revised General Note No. 5 and added No. 11
3-27-70		Changed Grouted Rip Rap to Rip Rap
3-27-70		Added DHC for Lot 23 Allview Drive and Carlinda Drive.

WHITMAN, REQUARDT & ASSOCIATES
ENGINEERS
1304 ST. PAUL ST.
BALTIMORE, MARYLAND

DEPARTMENT OF PUBLIC WORKS
HOWARD COUNTY, MARYLAND
5-27-70
DATE
W. O. Powell
CHIEF-BUREAU OF WATER AND SEWER

CONTRACT NO. 366-S

PLAN OF
SEWER MAINS

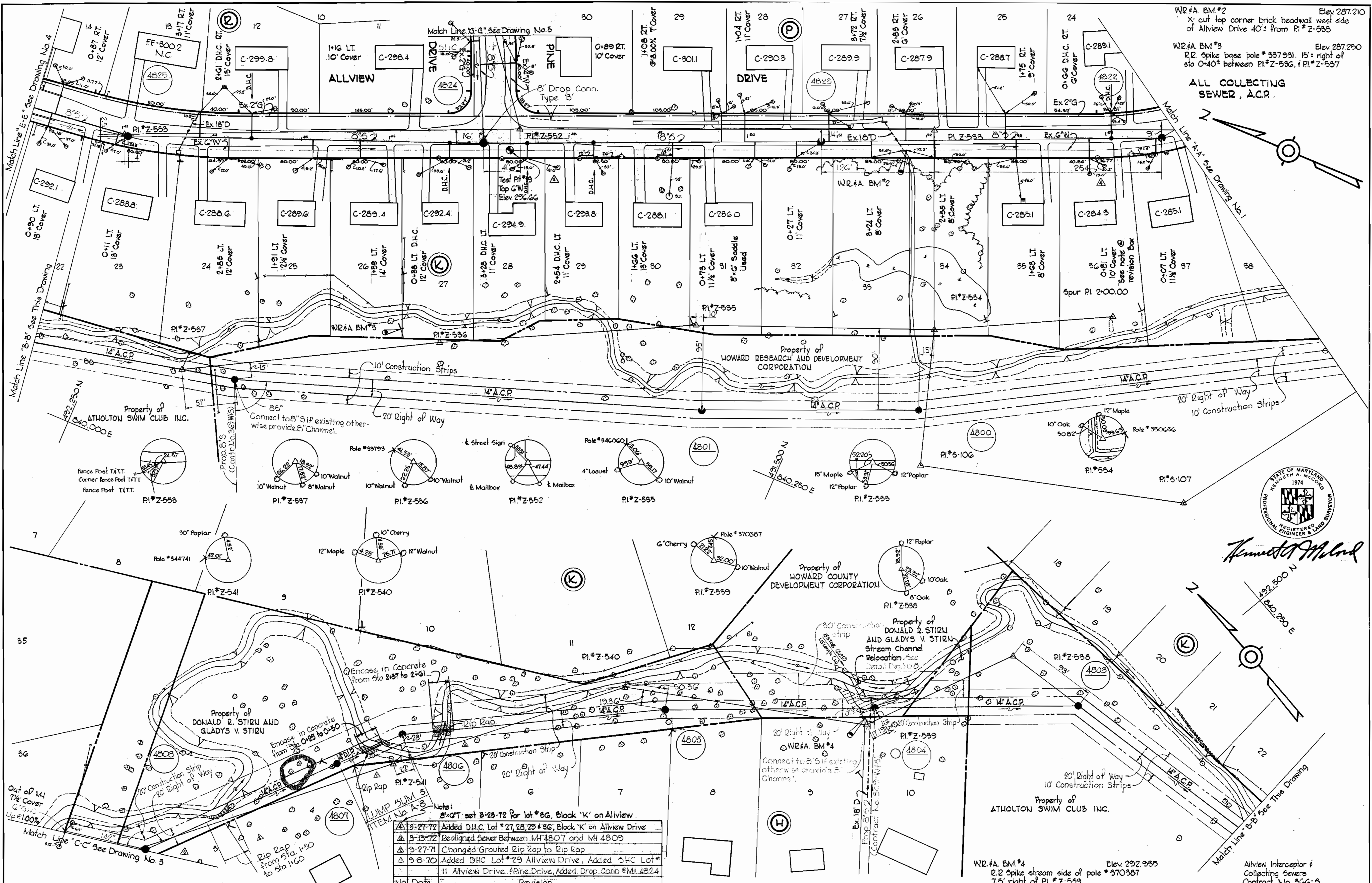
ELECTION DISTRICT
GUILFORD NO. 6

DRAWING NO. 1 OF 9
SCALE AS SHOWN

FB#4604, 4674 NOV. 13, 1972 AS BUILT

WS 366-S/1

W. O. 6185-2



W2#A BM #2 Elev. 287.210
 X-cut top corner brick headwall west side of Allview Drive 40' from PI #Z-553
 W2#A BM #3 Elev. 287.250
 R2 Spike base pole # 537931, 15' right of sta 0+40 between PI #Z-553, & PI #Z-557

ALL COLLECTING SEWER, A.C.P.



Kenneth A. McLeod

Notes:

- 5-27-72 Added D.H.C. Lot # 27, 28, 29 & 30, Block 'K' on Allview Drive
- 5-13-72 Realigned Sewer Between MH 4807 and MH 4809
- 9-27-71 Changed Grouted Rip Rap to Rip Rap
- 9-8-70 Added D.H.C. Lot # 29 Allview Drive, Added D.H.C. Lot # 11 Allview Drive, Pine Drive, Added Drop Conn. @ MH 4824

No. Date Revision
 11 Allview Drive, Pine Drive, Added Drop Conn. @ MH 4824

WHITMAN, REQUARDT & ASSOCIATES
 ENGINEERS
 1304 ST. PAUL ST.
 BALTIMORE, MARYLAND

DEPARTMENT OF PUBLIC WORKS
 HOWARD COUNTY, MARYLAND
 5-27-70
 W. O. Gilbert
 CHIEF - BUREAU OF WATER AND SEWER

CONTRACT NO. 366-S

PLAN OF SEWER MAINS

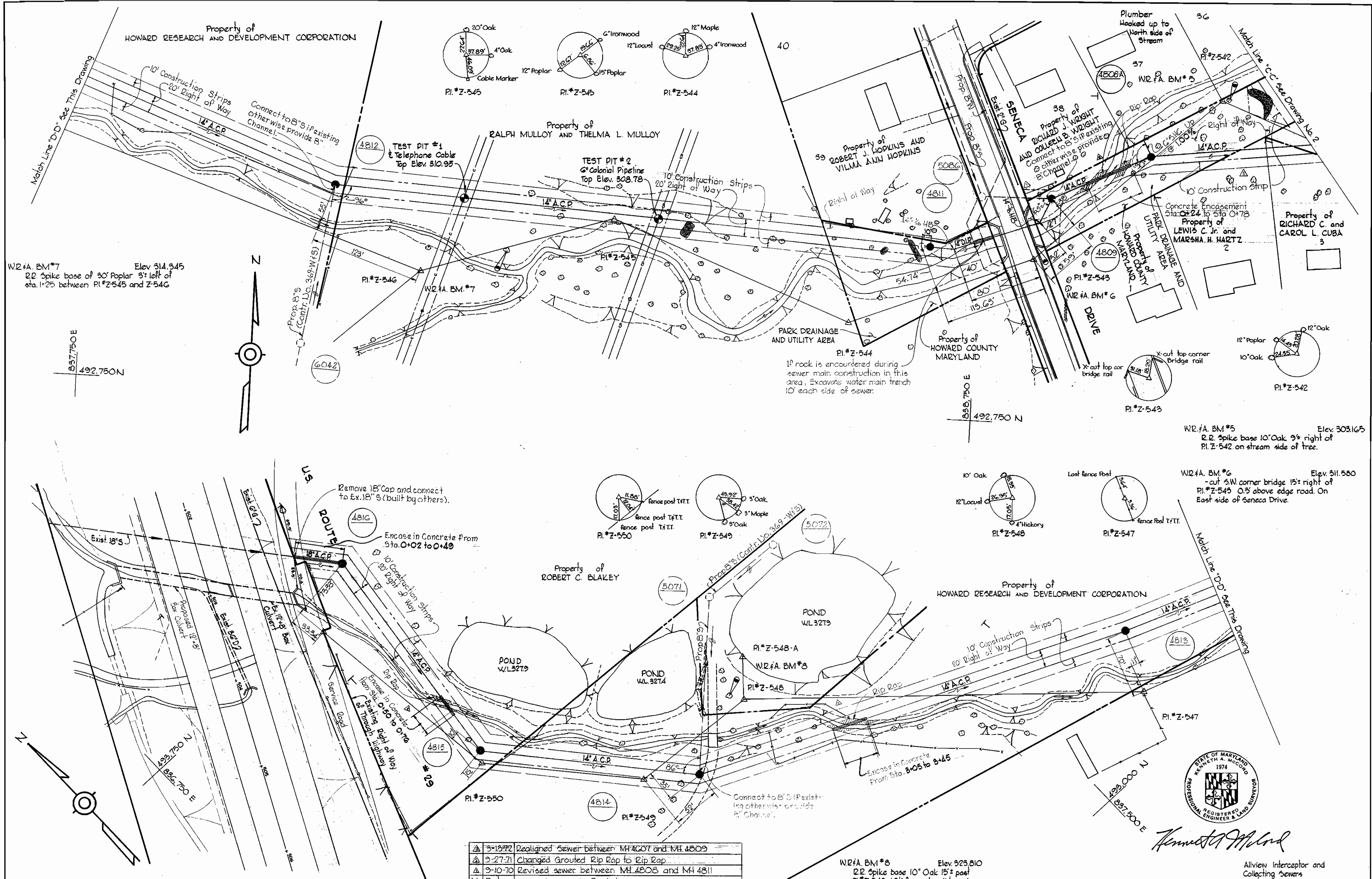
ELECTION DISTRICT GUILFORD NO. 6

DRAWING NO. 2 OF 9
SCALE 1" = 50'

W. O. G185-2

FB # 4604, 4606, 4607, 4674
 NOV. 13, 1972
 AS BUILT

WS 366-S/2



5-13-72	Realigned sewer between MH 4607 and MH 4809
9-27-71	Changed Grouted Rip Rap to Rip Rap
9-10-70	Revised sewer between MH 4808 and MH 4811
No. Date:	Revision

WHITMAN, REQUARDT & ASSOCIATES
ENGINEERS
 1304 ST. PAUL ST.
 BALTIMORE, MARYLAND

DEPARTMENT OF PUBLIC WORKS
 HOWARD COUNTY, MARYLAND
 DATE: 5-27-80
W. O. Palmer
 CHIEF-BUREAU OF WATER AND SEWER

CONTRACT NO. 366-S

PLAN OF SEWER MAINS

ELECTION DISTRICT NO. 6
GUILFORD

DRAWING NO. 3 OF 9
SCALE 1" = 50'

W. O. G185-2

FB*4604, 4607, 4612, 4637 L.O.V. 13, 1972

AS BUILT

WS 366-S/3

SUSPENDED

SUSPENDED



Kenneth A. Accord

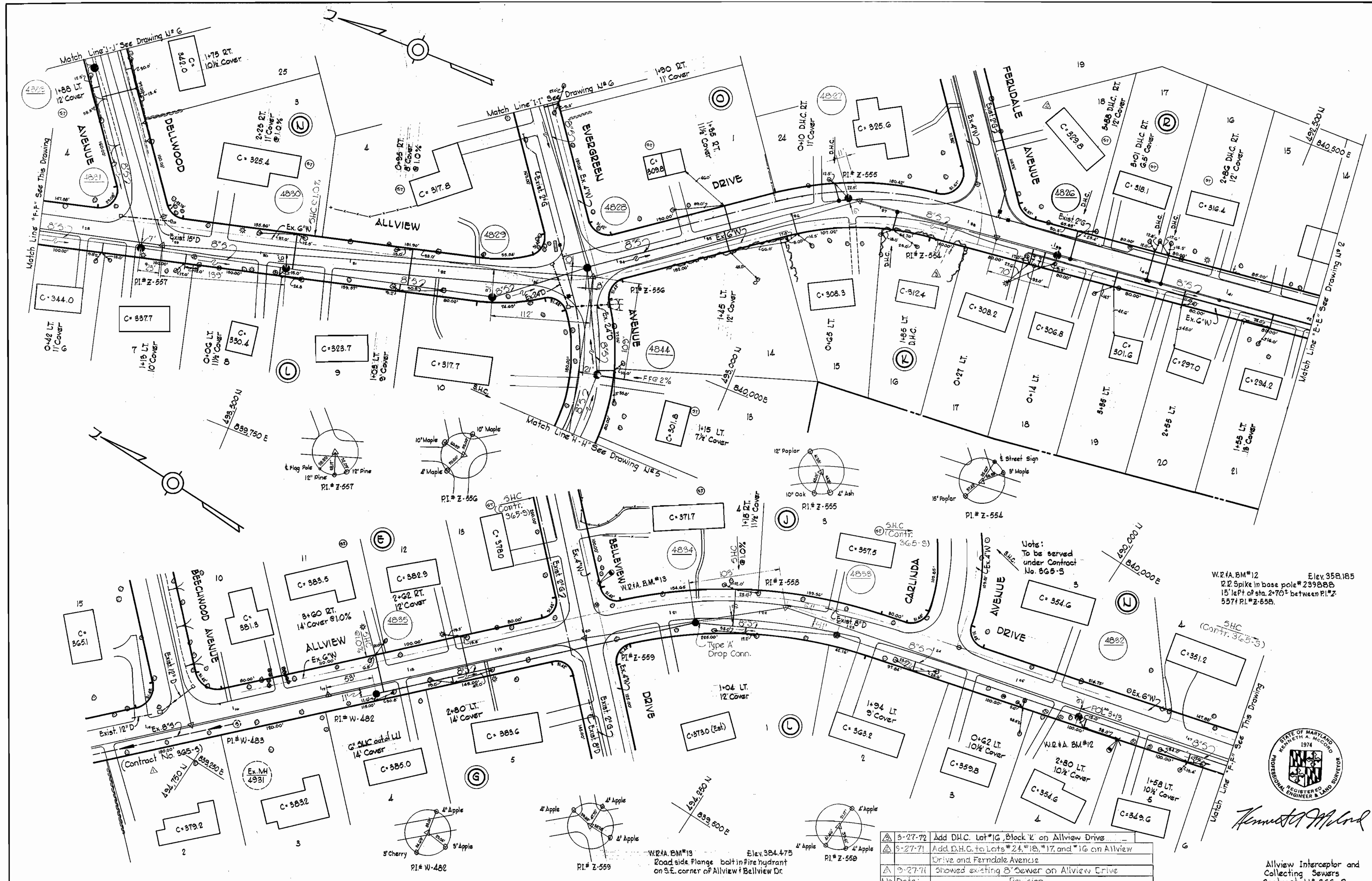
Allview Interceptor and Collecting Sewers
 Contract No. 366-S

WS 366-S/4

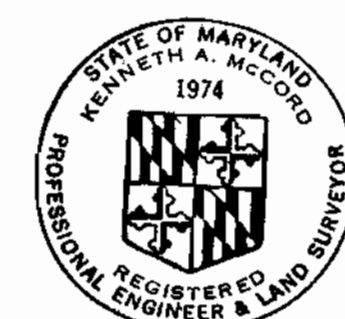
SUPPLEMENT

SUPPLEMENT

SUPPLEMENT



W.R.A. BM#12 Elev. 358.185
 12" Spike in base pole #239888
 15' left of sta. 2+70' between P.I.#2
 5571 P.I.#2-558.



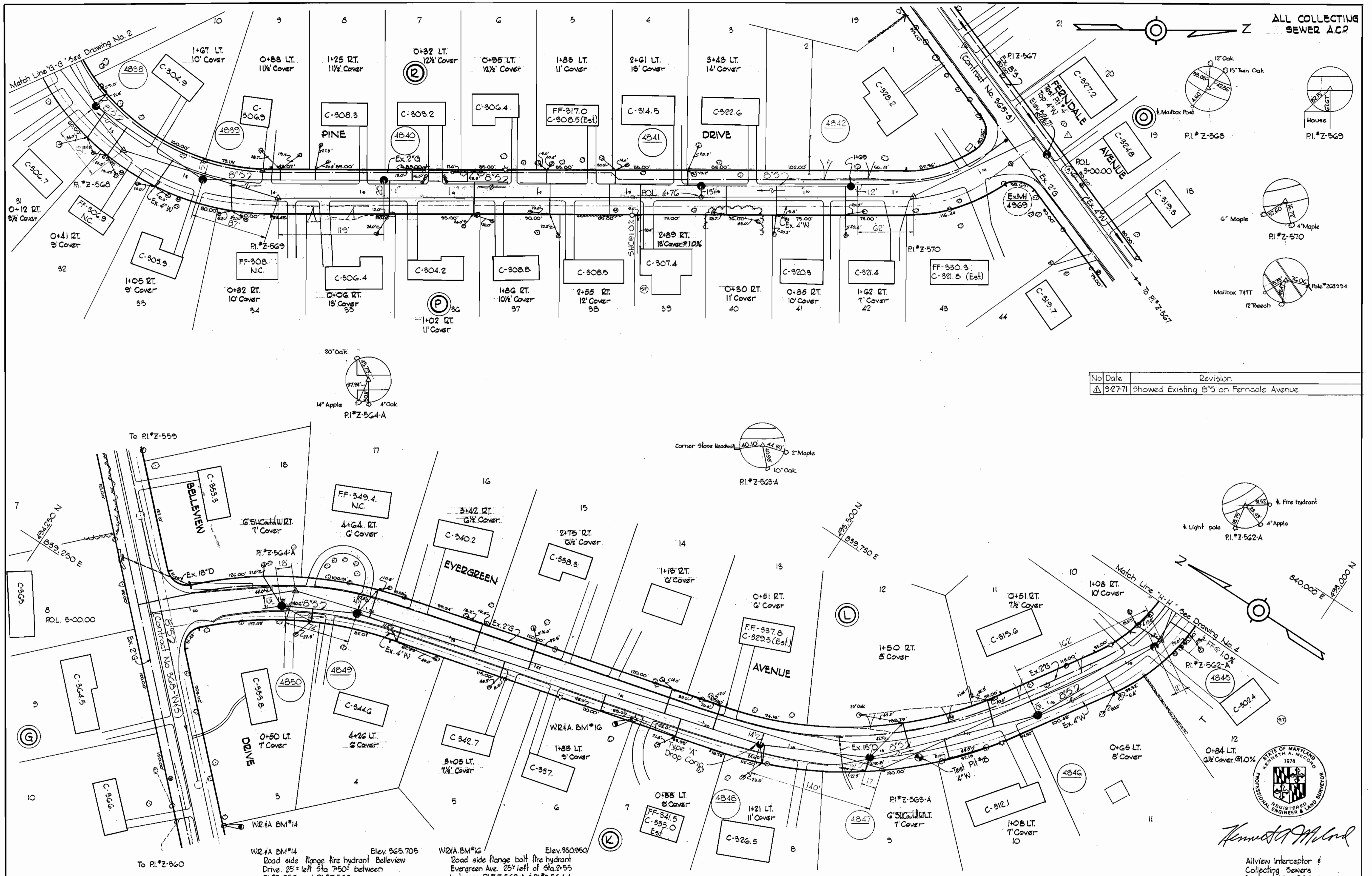
Kenneth A. McLeod

3-27-72	Add D.H.C. Lot #16, Block 'V' on Allview Drive
5-27-71	Add D.H.C. to Lots #24, #18, #17, and #16 on Allview Drive and Ferndale Avenue
3-27-71	Showed existing 8" sewer on Allview Drive
No.:	Date:
	Revision

Allview Interceptor and Collecting Sewers
 Contract No. 366-S

WHITMAN, REQUARDT & ASSOCIATES ENGINEERS 1304 ST. PAUL ST. BALTIMORE, MARYLAND	DEPARTMENT OF PUBLIC WORKS HOWARD COUNTY, MARYLAND <i>W. O. Falbert</i> CHIEF-BUREAU OF WATER AND SEWER	CONTRACT NO. 366-S	PLAN OF SEWER MAINS	ELECTION DISTRICT GUILFORD NO. 6	DRAWING NO. 4	SCALE 492,481 493,481 493,480 494,480
					OF 9	1" = 50'

ALL COLLECTING SEWER A.C.P.



No	Date	Revision
1	9-27-71	showed Existing B'S on Ferndale Avenue



Herbert M. Lord
 Registered Professional Engineer & Land Surveyor

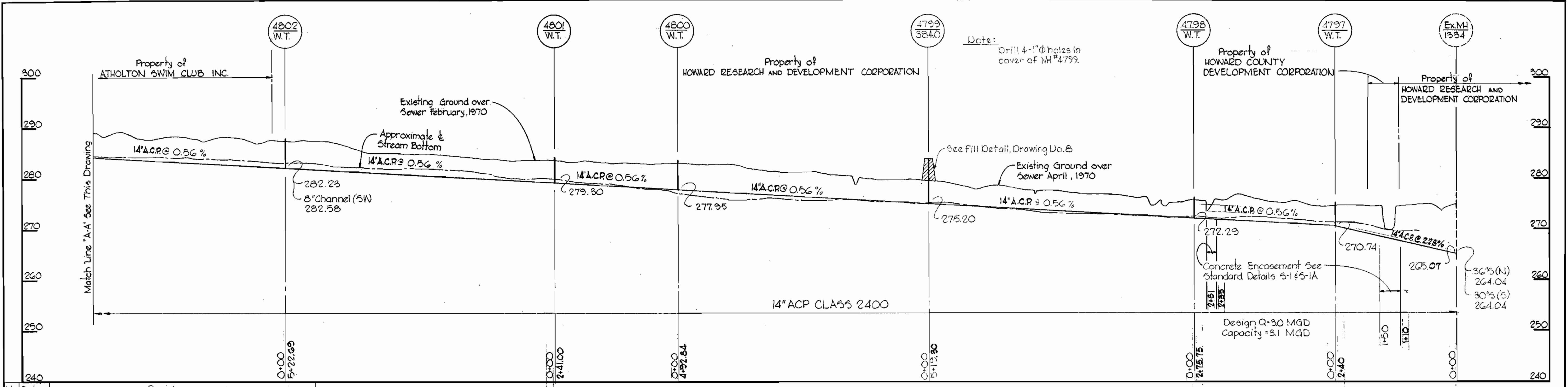
Allview Interceptor & Collecting Sewers
 Contract No. 366-S

<p>WHITMAN, REQUARDT & ASSOCIATES ENGINEERS 1304 ST. PAUL ST. BALTIMORE, MARYLAND</p>	<p>DEPARTMENT OF PUBLIC WORKS HOWARD COUNTY, MARYLAND DATE: 5-27-70 <i>W.O. Palumbo</i> CHIEF - BUREAU OF WATER AND SEWER</p>	<p>CONTRACT NO. 366-S</p>	<p>PLAN OF SEWER MAINS</p>	<p>ELECTION DISTRICT GUILFORD NO. 6</p>	<p>DRAWING NO. 5 OF 9</p>	<p>SCALE 1"=50'</p>
---	--	----------------------------------	-----------------------------------	--	----------------------------------	----------------------------

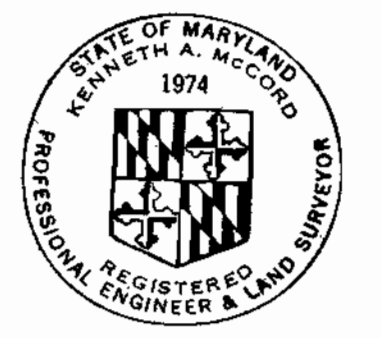
WS 366-S/5

E. K. ELLIOTT CO., PHIL. PA. REORDER A-11827

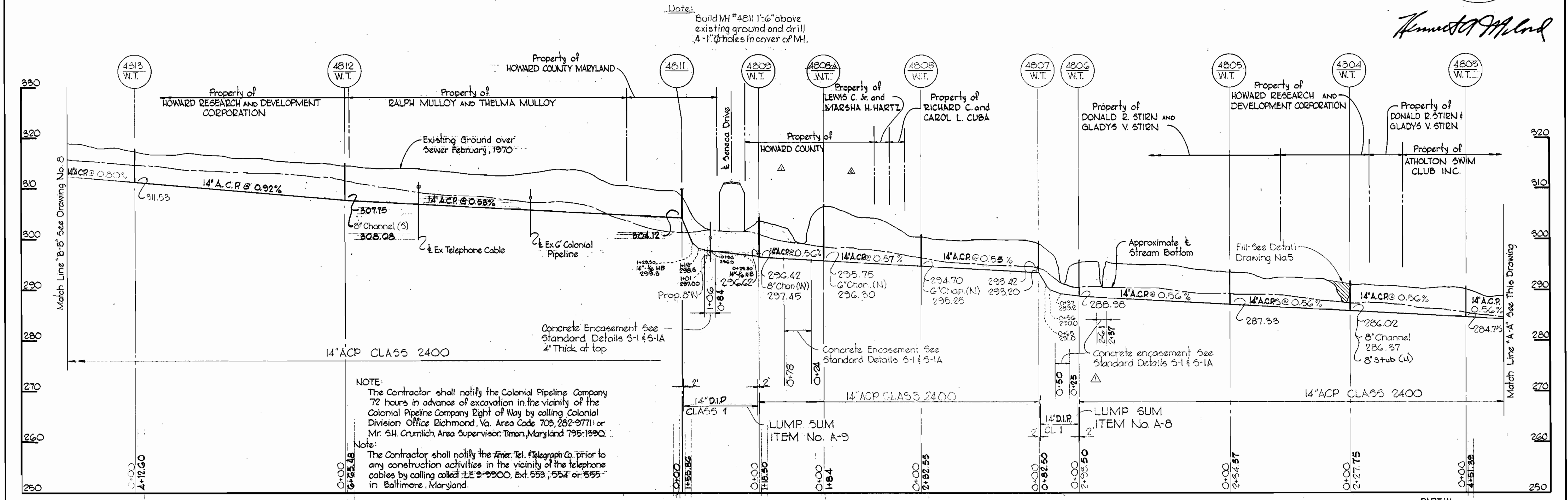
SUPERSEDES



No.	Date	Revision
1	9-10-70	Revised sewer between MH 4808 and 4811
2	3-13-72	Revised sewer betw. MH 4807 and 4811 and added MH 4808A



Kenneth A. McCord



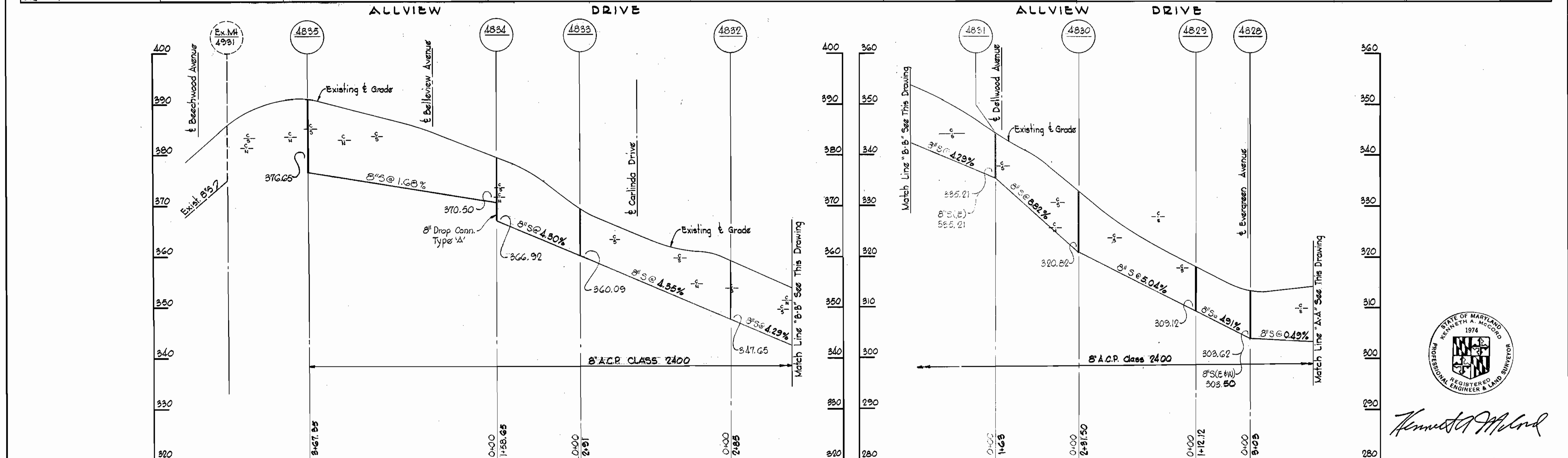
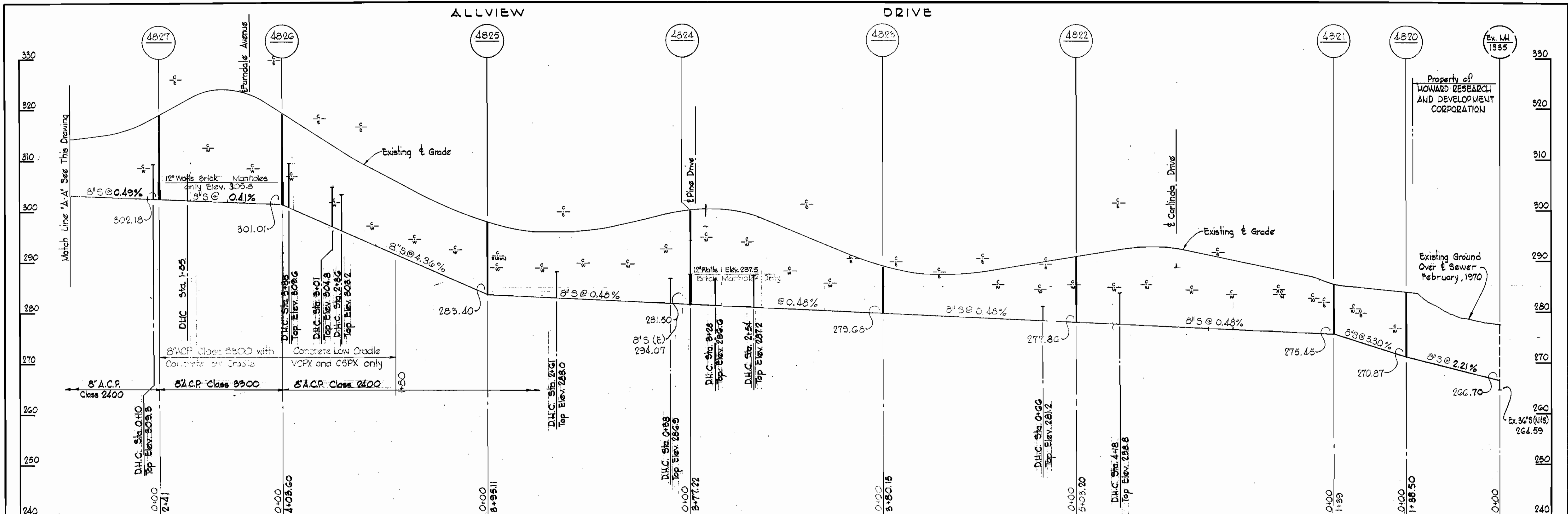
NOTE:
The Contractor shall notify the Colonial Pipeline Company 72 hours in advance of excavation in the vicinity of the Colonial Pipeline Company Right of Way by calling Colonial Division Office, Richmond, Va. Area Code 703, 282-2771; or Mr. S.H. Crumlich, Area Supervisor, Timon, Maryland 795-1990.

Note:
The Contractor shall notify the Amer. Tel. Telegraph Co. prior to any construction activities in the vicinity of the telephone cables by calling collect TEL 9-9900, Ext. 553, 554 or 555 in Baltimore, Maryland.

WHITMAN, REQUARDT & ASSOCIATES ENGINEERS 1304 ST. PAUL ST. BALTIMORE, MARYLAND	DEPARTMENT OF PUBLIC WORKS HOWARD COUNTY, MARYLAND 5-27-70 <i>W. O. Gilbert</i> CHIEF - BUREAU OF WATER AND SEWER	CONTRACT NO. 366-S	PROFILES OF SEWER MAINS	ELECTION DISTRICT GUILFORD NO. 6	PART 'A' Contract No. 366-S	DRAWING NO. 7 OF 9	SCALE H:1"=100' V:1"=10'
					W. O. Gilbert	NOV 13 1972 AS B.M.T.	

WS 366-S/7

WS 366-S/9



3-27-72	Added D.H.C. between MH's 4827 & 4821 on Allview Drive	3-27-71	Added D.H.C. between MH 4825 & 4826 and MH 4826 & 4827
	Revision		Revision

WHITMAN, REQUARDT & ASSOCIATES ENGINEERS 1304 ST. PAUL ST. BALTIMORE, MARYLAND	DEPARTMENT OF PUBLIC WORKS HOWARD COUNTY, MARYLAND DATE: 5-27-70 <i>W. O. Gilbert</i> CHIEF - BUREAU OF WATER AND SEWER	CONTRACT NO. 366-S	PROFILES OF SEWER MAINS	ELECTION DISTRICT GUILFORD NO. 6	DRAWING NO. 9	SCALE H:V = 100'
					OF 9	V:1" = 10'



Kenneth A. McCord

PART 'B'
 Allview Interceptor
 and Collecting Sewers
 Contract UO 366-S