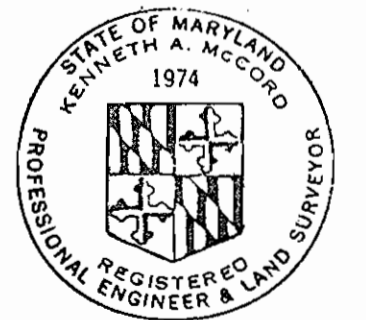


CONTRACT NO C-359 W-S
WATER AND SEWER EXTENSIONS
HOWARD COUNTY MARYLAND
DEPARTMENT OF PUBLIC WORKS

QUANTITIES	
6" Water	90'
8" Water	5,940'
12" Water	2,750'
8" Sewer	1,660'
10" Sewer	80'



Kenneth A. McCord

Water Pipe - C.I.
Sewer Pipe - A.C.
Diary's Stake out in FB # 4829

Village of Longreach
Jaffers Hill, Locust Park
Contract No. C-359 W-S

WHITMAN, REQUARDT & ASSOCIATES ENGINEERS 1304 ST. PAUL ST. BALTIMORE, MARYLAND	DEPARTMENT OF PUBLIC WORKS HOWARD COUNTY, MARYLAND 9-21-70 DATE <i>W. O. Falbert</i> CHIEF, BUREAU OF WATER AND SEWER	CONTRACT NO. C-359 W-S	LOCATION MAP COLUMBIA VILLAGE OF LONGREACH ELECTION DISTRICT GUILFORD No. 6	DRAWING NO. 1 OF 6	SCALE AS SHOWN

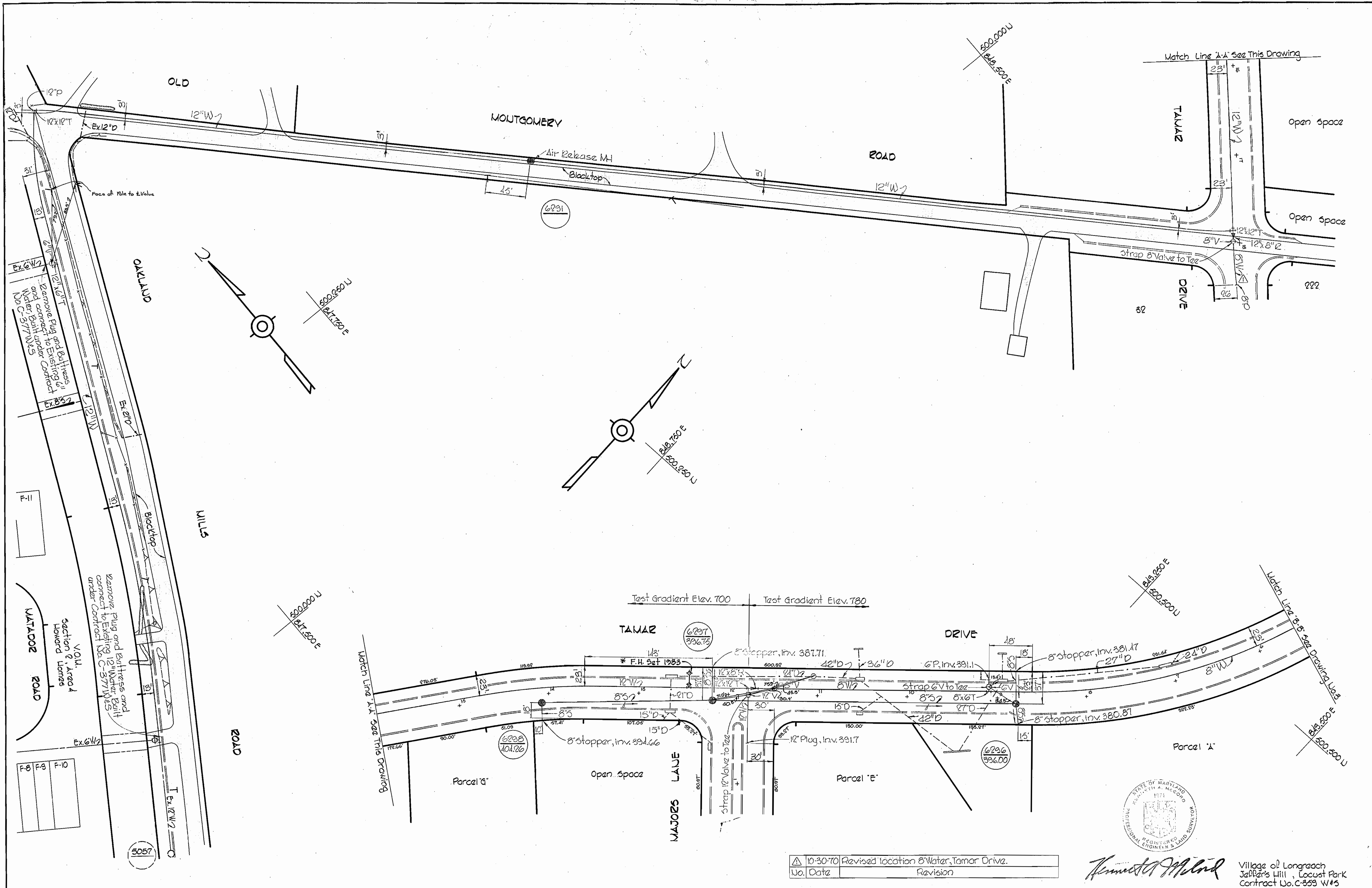
W.O. 6023-2

AS BUILT

15, May, 1971

WS 359-W-S/1

WS 359-W&S/2



10-30-70	Revised location 8" Water, Tamar Drive.
Uo. Date	Revision

Kenneth A. Milrod

Village of Longreach
 Jellard's Hill, Locust Park
 Contract No. C-359 W&S

WHITMAN, REQUARDT & ASSOCIATES
 ENGINEERS
 1304 ST. PAUL ST.
 BALTIMORE, MARYLAND

DEPARTMENT OF PUBLIC WORKS
 HOWARD COUNTY, MARYLAND
 9-21-70
 DATE

 W. O. Filbeck
 CHIEF-BUREAU OF WATER AND SEWER

CONTRACT NO. C-359 W&S

PLAN OF
 WATER & SEWER MAINS

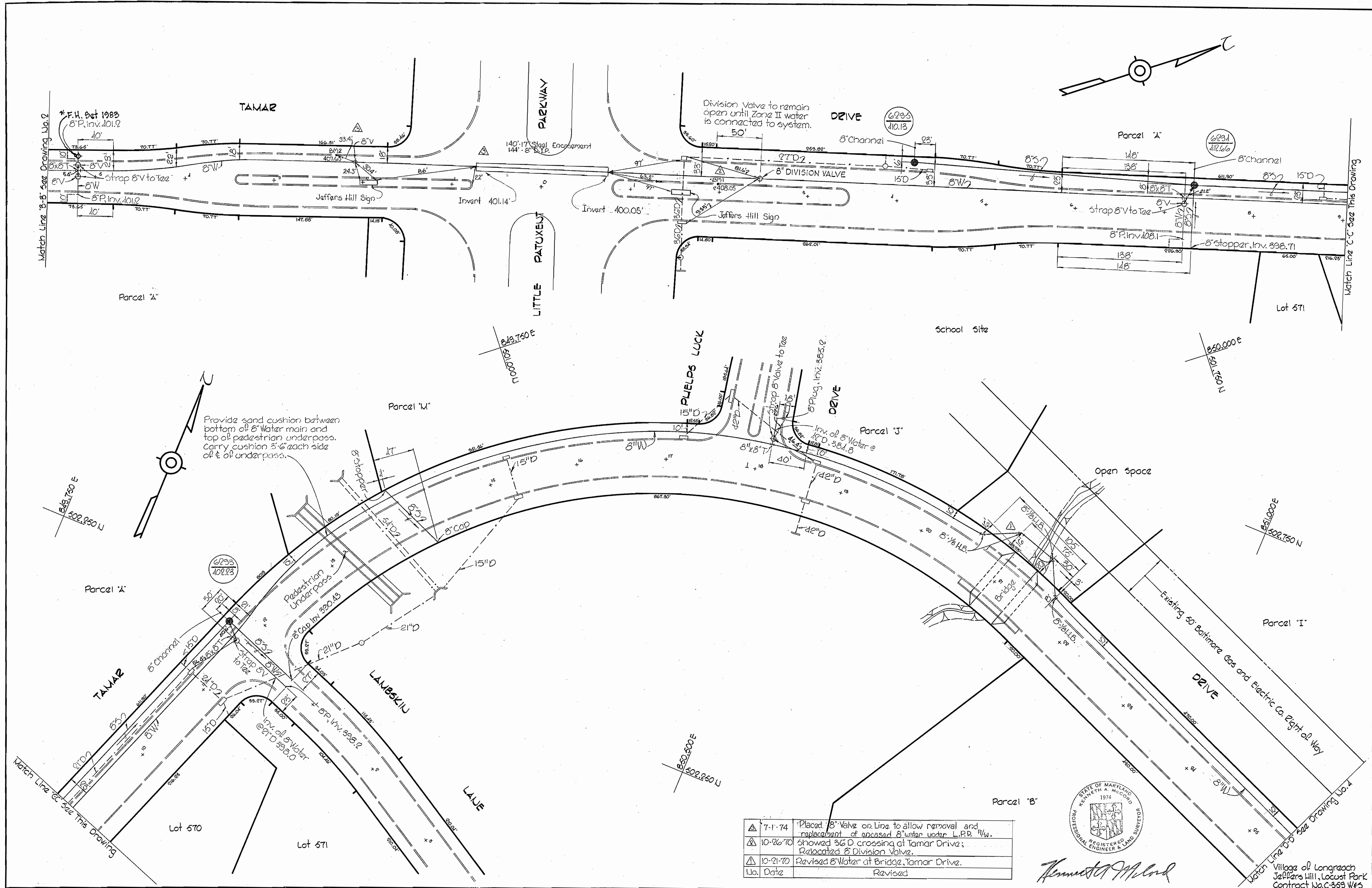
COLUMBIA
 VILLAGE OF LONGREACH
 ELECTION DISTRICT GUILFORD NO. 6

DRAWING NO. 2 OF 6
 SCALE 1" = 50'
 600-485

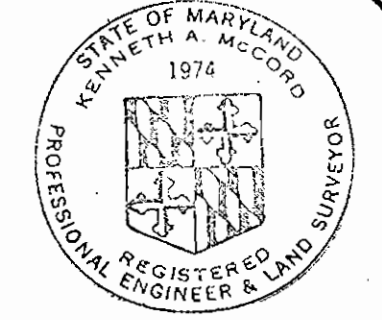
W. O. 6023-2

* F.H. Added 1985
 2100 SW
 15, May 1971

WS 359-W&S/3



7-1-74	Placed 8" Valve on Line to allow removal and replacement of gas-cased 8" water under L.P.D. #1/W.
10-26-70	showed 36" D crossing at Tamar Drive; Relocated 8" Division Valve.
10-21-70	Revised 8" Water at Bridge, Tamar Drive.
No. Date	Revised



Kenneth A. McLeod

Village of Longreach
Jaffers Hill, Locust Park
Contract No. C-359 W&S

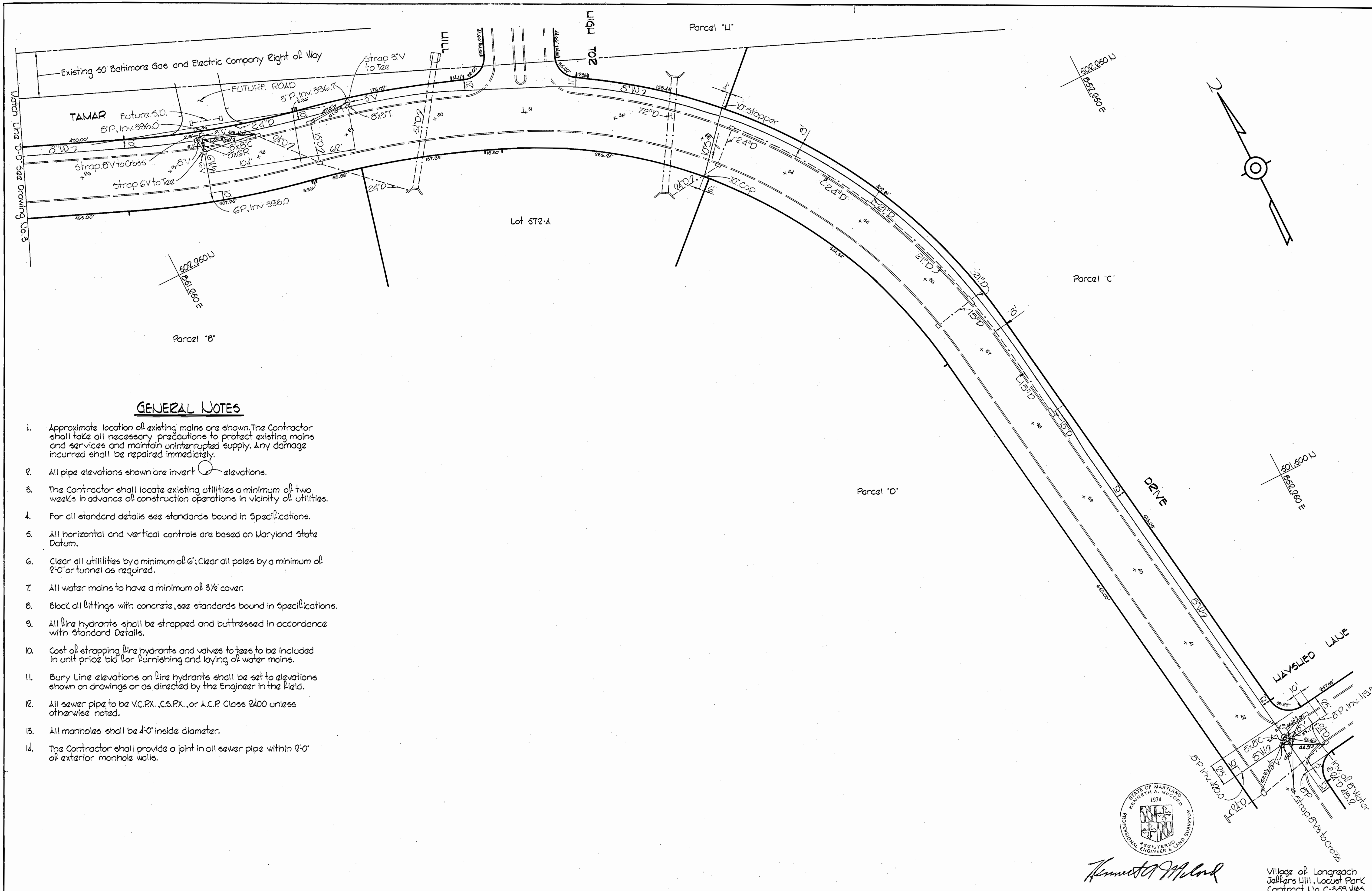
WHITMAN, REQUARDT & ASSOCIATES ENGINEERS 1304 ST. PAUL ST. BALTIMORE, MARYLAND	DEPARTMENT OF PUBLIC WORKS HOWARD COUNTY, MARYLAND 9-21-70 DATE <i>W. O. Filbeck</i> CHIEF-BUREAU OF WATER AND SEWER	CONTRACT NO. C-359 W&S	PLAN OF WATER & SEWER MAINS	COLUMBIA VILLAGE OF LONGREACH ELECTION DISTRICT GUILFORD NO. 6	DRAWING NO. 3	SCALE 1" = 50'
					OF 6	

W. O. 6023-2

* F.H. Added 1983

AS BUILT

15, May 1971



GENERAL NOTES

1. Approximate location of existing mains are shown. The Contractor shall take all necessary precautions to protect existing mains and services and maintain uninterrupted supply. Any damage incurred shall be repaired immediately.
2. All pipe elevations shown are invert elevations.
3. The Contractor shall locate existing utilities a minimum of two weeks in advance of construction operations in vicinity of utilities.
4. For all standard details see standards bound in Specifications.
5. All horizontal and vertical controls are based on Maryland State Datum.
6. Clear all utilities by a minimum of 6'; Clear all poles by a minimum of 8'-0" or tunnel as required.
7. All water mains to have a minimum of 3 1/2' cover.
8. Block all fittings with concrete, see standards bound in Specifications.
9. All fire hydrants shall be strapped and buttressed in accordance with Standard Details.
10. Cost of strapping fire hydrants and valves to tees to be included in unit price bid for furnishing and laying of water mains.
11. Bury Line elevations on fire hydrants shall be set to elevations shown on drawings or as directed by the Engineer in the field.
12. All sewer pipe to be V.C.P.X., C.S.P.X., or A.C.P. Class 2400 unless otherwise noted.
13. All manholes shall be 4'-0" inside diameter.
14. The Contractor shall provide a joint in all sewer pipe within 2'-0" of exterior manhole walls.

WHITMAN, REQUARDT & ASSOCIATES
 ENGINEERS
 1304 ST. PAUL ST.
 BALTIMORE, MARYLAND

DEPARTMENT OF PUBLIC WORKS
 HOWARD COUNTY, MARYLAND

9-21-72
 DATE

W. O. P. Webb
 CHIEF-BUREAU OF WATER AND SEWER

CONTRACT NO. C-359 W&S

**PLAN OF
 WATER & SEWER MAINS**

**COLUMBIA
 VILLAGE OF LONGREACH
 ELECTION DISTRICT GUILFORD NO. 6**

**DRAWING
 NO. 4
 OF 6**

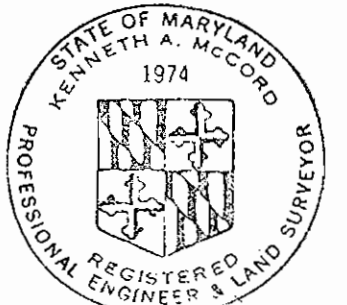
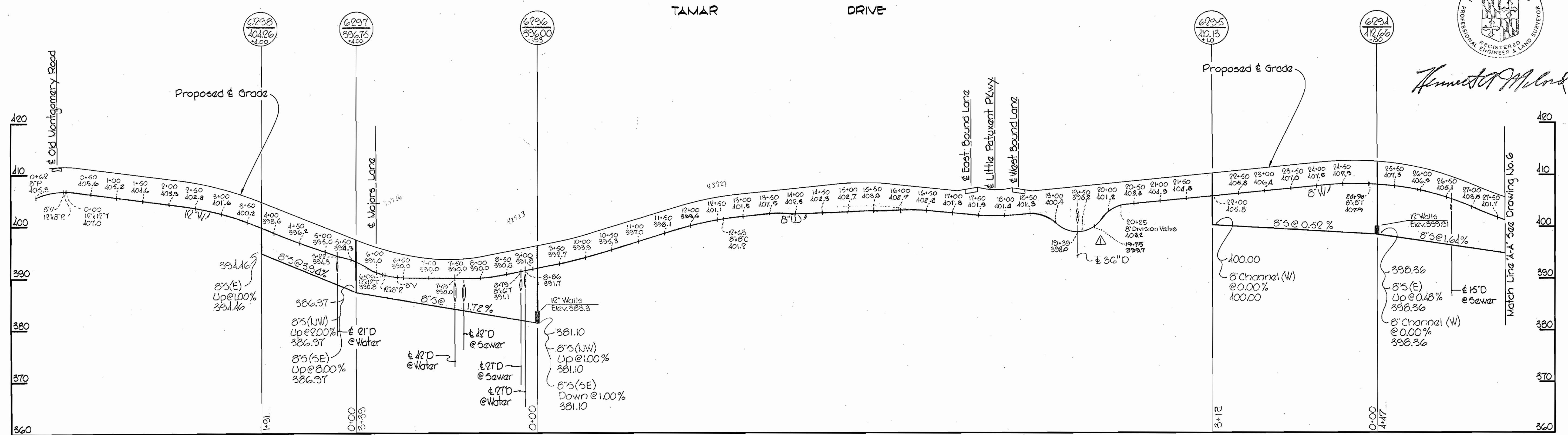
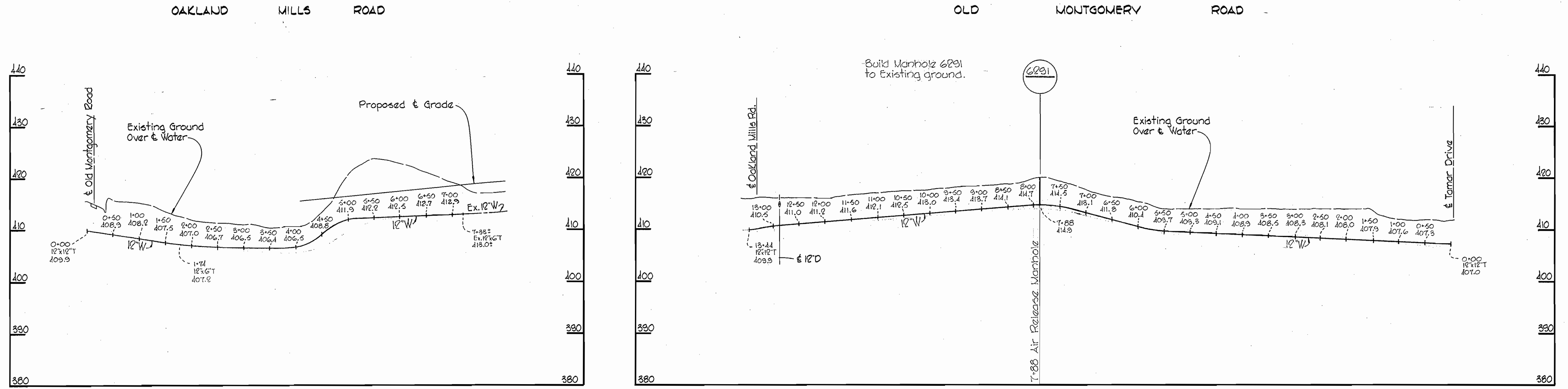
**SCALE
 1" = 50'**

Kenneth A. McCord
 REGISTERED PROFESSIONAL ENGINEER & SURVEYOR

Village of Longreach
 Jeffers Hill, Locust Park
 Contract No. C-359 W&S

WS 359-W&S/H

WS 359-W&S/5



Kenneth A. McCord

10-26-70	Revised 8" W Valve at 36'D, Tamar Drive.
No. Date	Revision

Village of Longreach
Jeffers Hill, Locust Park
Contract No. C-359 W&S

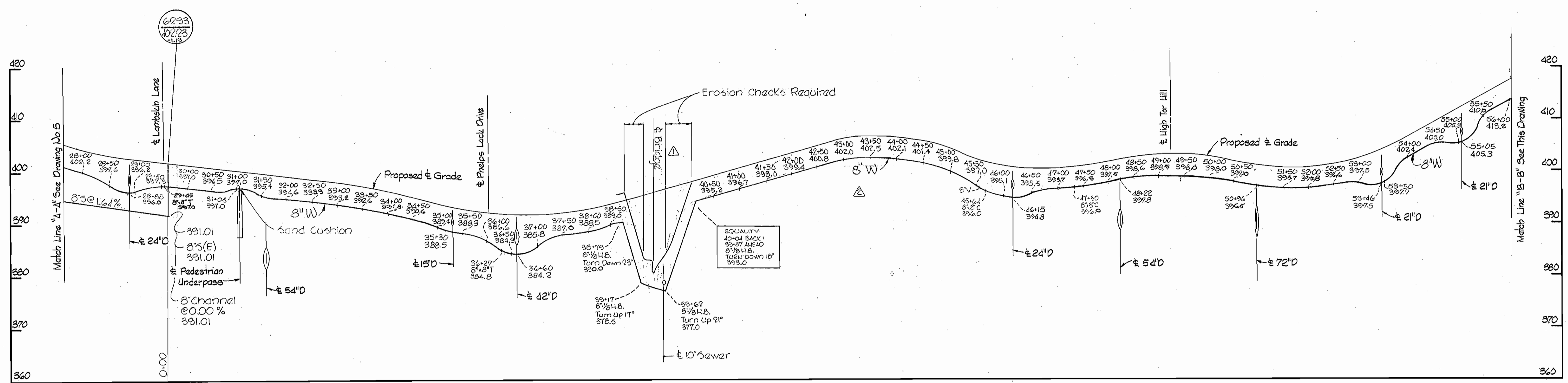
WHITMAN, REQUARDT & ASSOCIATES ENGINEERS 1304 ST. PAUL ST. BALTIMORE, MARYLAND	DEPARTMENT OF PUBLIC WORKS HOWARD COUNTY, MARYLAND 9-21-70 DATE	CONTRACT NO. C-359 W&S W. O. Silber CHIEF - BUREAU OF WATER AND SEWER	PROFILES OF WATER & SEWER MAINS	COLUMBIA VILLAGE OF LONGREACH ELECTION DISTRICT GUILFORD NO. 6	DRAWING NO. 5	SCALE H:1"=100'
					OF 6	V:1"=10'

W. O. 6023-2

AS BUILT 15 May 1971

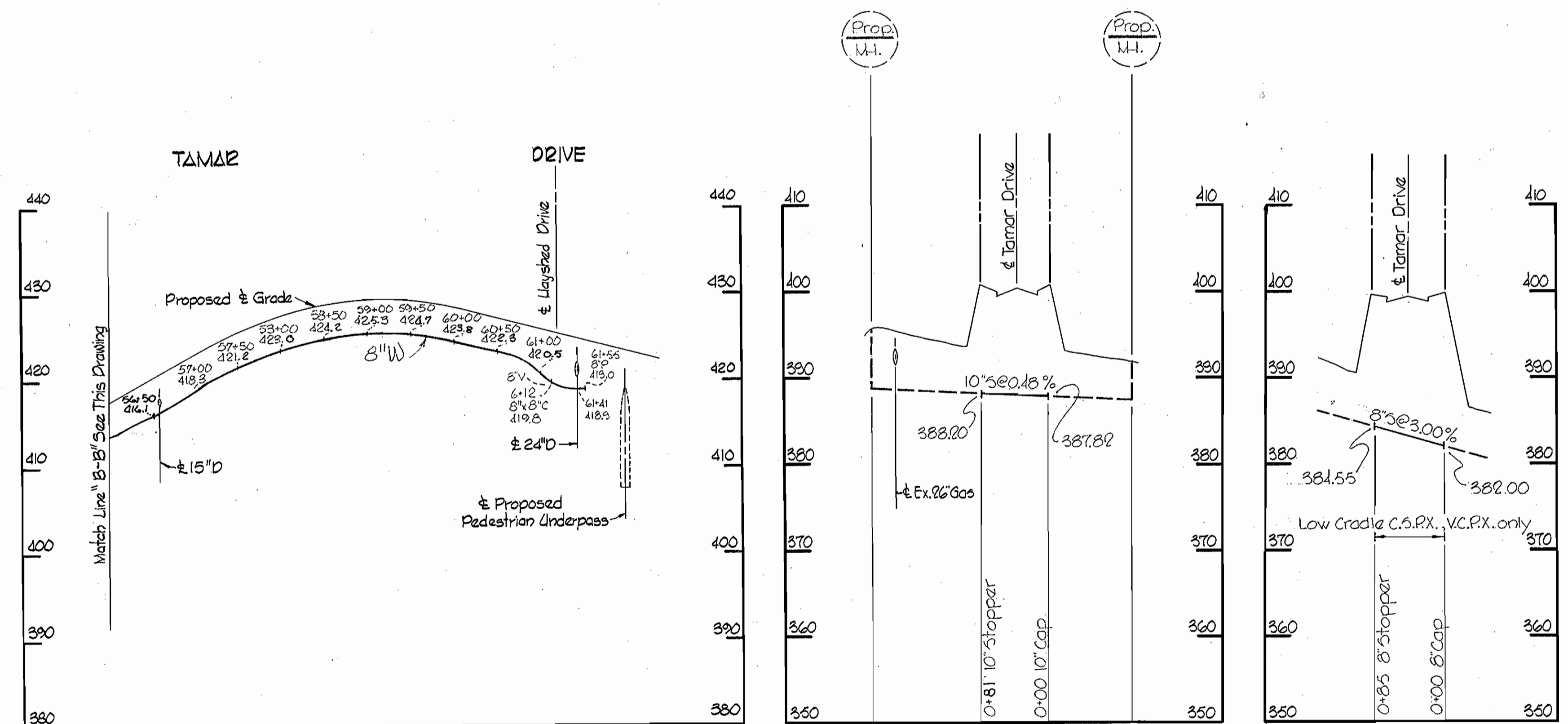
TAMAR

DRIVE

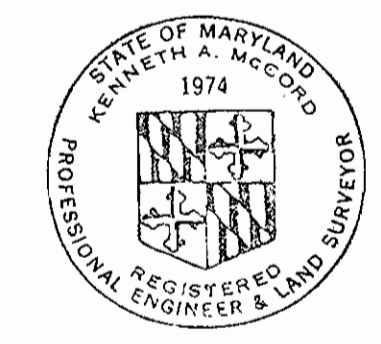


TAMAR DRIVE - STA. 33+12

TAMAR DRIVE - STA. 4+05



△	11-5-70	Revised 8" Water, Sta. 40+50 to Sta. 45+50 on TAMAR DRIVE.
△	10-21-70	Revised 8" Water at Bridge, Tamar Drive
No.	Date	Revision



Kenneth A. McLeod

Village of Longreach
Jaffar's Hill, Locust Park
Contract No. C-359 W&S

WHITMAN, REQUARDT & ASSOCIATES ENGINEERS 1304 ST. PAUL ST. BALTIMORE, MARYLAND	DEPARTMENT OF PUBLIC WORKS HOWARD COUNTY, MARYLAND 9-21-70 DATE	W. O. P. Wood CHIEF-BUREAU OF WATER AND SEWER	CONTRACT NO. C-359 W&S	PROFILES OF WATER & SEWER MAINS	COLUMBIA VILLAGE OF LONGREACH ELECTION DISTRICT GUILFORD NO. 6	DRAWING NO. 6 OF 6	SCALE H:1"=100' V:1"=10'
						W. O. 6023-2	15, May, 1971

WS 359-W&S/6