

VICINITY MAP
Scale: 1" = 600'

GENERAL NOTES

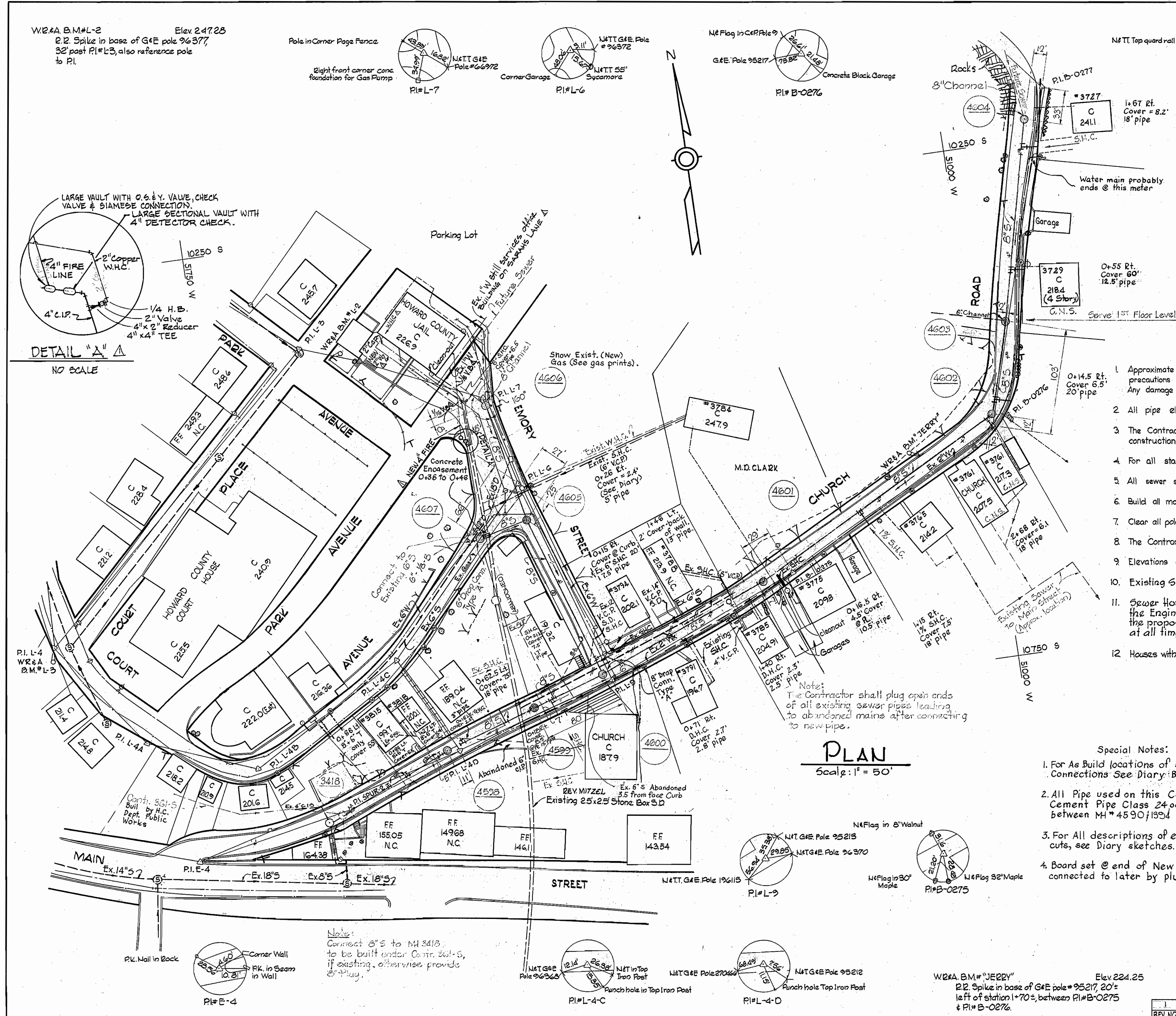
1. Approximate location of existing mains are shown. The Contractor shall take all necessary precautions to protect the existing mains and services and maintain uninterrupted supply. Any damage incurred shall be repaired immediately.
2. All pipe elevations shown are invert elevations.
3. The Contractor shall locate existing utilities a minimum of two weeks in advance of construction operations in vicinity of utilities.
4. For all standard details, see Standards bound in Specifications.
5. All sewer shall be V.C.P.X., C.S.P.X. or Asbestos Cement Class 2400 unless otherwise noted.
6. Build all manholes to existing ground or paving unless otherwise noted.
7. Clear all poles by 20' minimum or tunnel as required. Clear all existing utilities by 6' minimum.
8. The Contractor shall provide a joint in all sewer mains within 2'-0" of exterior manhole walls.
9. Elevations and Coordinates are based upon Howard County Datum.
10. Existing Sewers to be abandoned are labeled ~~---~~.
11. Sewer House Connections shall be constructed only where and if directed by the Engineer in the field. Existing Sewer House Connections shall be connected to the proposed Sewer. The Contractor shall maintain existing sewer service at all times.
12. Houses with symbol (C.N.S.) indicates that the cellar cannot be served.

QUANTITY	
ITEM	QUANTITY
6" Sewer	10
8" Sewer	2140

- Special Notes:
1. For As-Built locations of sewer house Connections See Diary Book #4828.
 2. All Pipe used on this Contact Asbestos Cement Pipe Class 24.00. Except Hill St. between MH #4590/1854.
 3. For All descriptions of existing pipes & rock cuts, see Diary sketches.
 4. Board set @ end of New S.H.C.'s to be connected to later by plumber.



Stake-out & Diary Book #4828
Kenneth A. McCord
 AS BUILT
 Ellicott City-Projects II & IV
 Contract 355-S



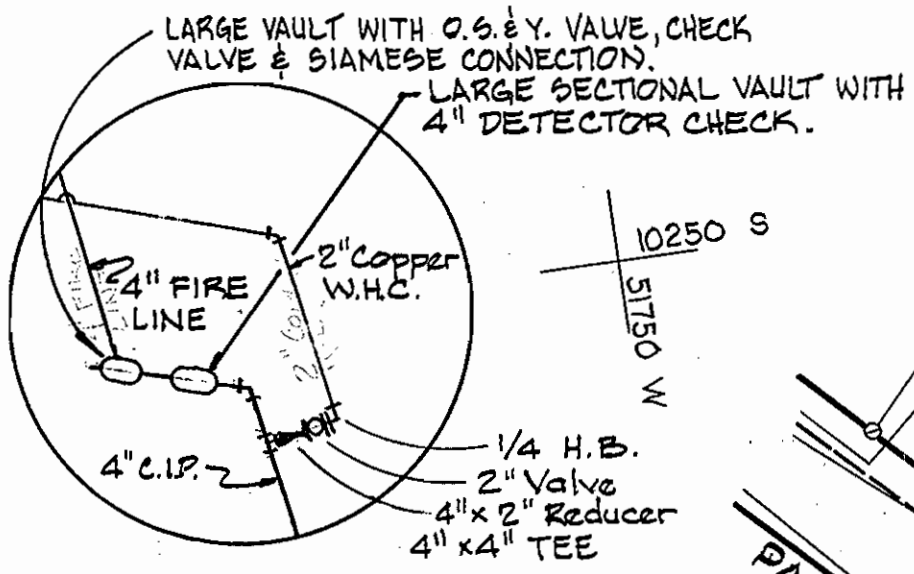
PLAN
Scale: 1" = 50'

W2&A B.M.#L-2 Elev 247.25
 2" Spike in base of G&E pole #96377,
 32 post #1#L-3, also reference pole
 to P.I.

Poles in Corner Page Fence
 Right front corner conc. foundation for Gas Pump
 N&TT G&E Pole #66972
 Corner Garage
 N&TT G&E Pole #96372
 N&TT 55' Sycamore
 P.I.#L-7
 P.I.#L-6

N&E Flag in C&R Pole #2641/218
 G&E Pole #95217
 Concrete Block Garage
 P.I.#B-0276

N&TT Top guard wall post
 N&TT G&E Pole #96116
 N&E Flag 16" Maple
 P.I.#B-0277

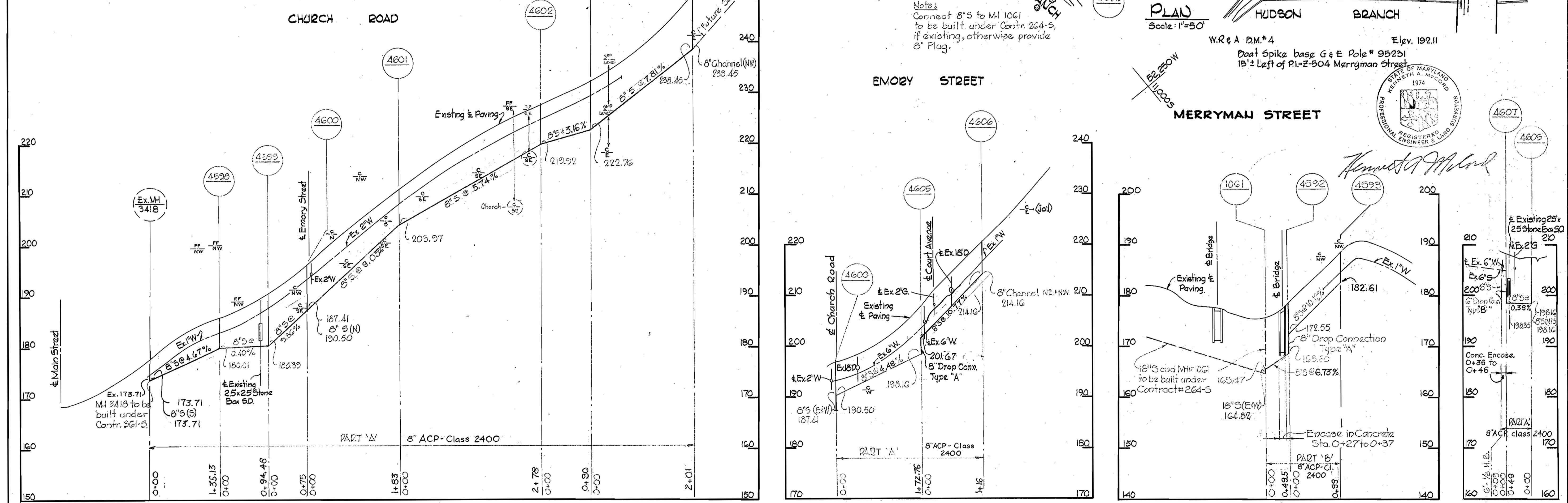
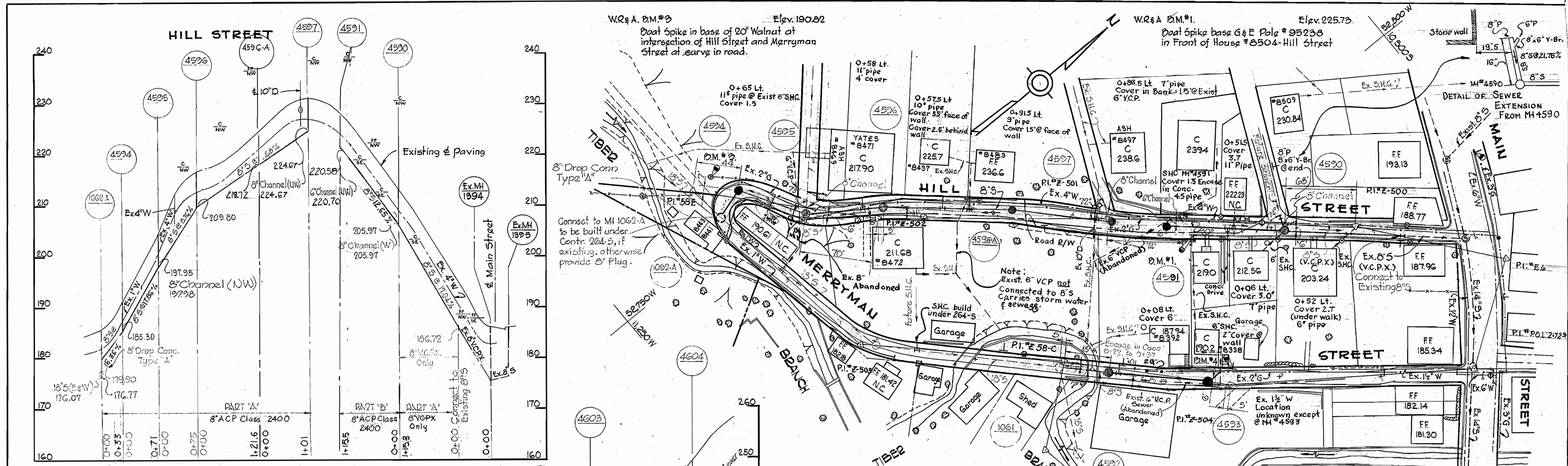


DETAIL "A" A
NO SCALE

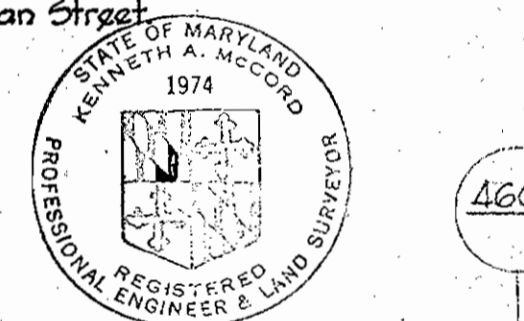
Note:
 The Contractor shall plug open ends of all existing sewer pipes leading to abandoned mains after connecting to new pipe.

WHITMAN, REQUARDT & ASSOCIATES ENGINEERS 1304 ST. PAUL ST. BALTIMORE, MARYLAND	DEPARTMENT OF PUBLIC WORKS HOWARD COUNTY, MARYLAND DATE 4-15-70 <i>W. O. Folbert</i> CHIEF - BUREAU OF WATER AND SEWER	CONTRACT NO. 355-S	PLAN OF SEWER MAINS	ELECTION DISTRICT ELLICOTT CITY NO. 2	DRAWING NO. 1 OF 2	SCALE AS SHOWN 11 SW 35 11 SW 36
					10-B-24 RENOVATED JAIL - REVISED WH&C FIRE LINE REV. NO. REV. DATE REVISION DESCRIPTION	

WS 355-S/1



PROFILES
Scale: 4" = 100'
1" = 10'



Kenneth A. Accord

WHITMAN, REQUARDT & ASSOCIATES
ENGINEERS
1304 ST. PAUL ST.
BALTIMORE, MARYLAND

DEPARTMENT OF PUBLIC WORKS
HOWARD COUNTY, MARYLAND
4-15-70
W. O. Falbert
CHIEF - BUREAU OF WATER AND SEWER

CONTRACT NO. 355-S

PLAN & PROFILES
OF SEWER MAINS

ELECTION DISTRICT
ELlicOTT CITY NO. 2

DRAWING
NO. 2
OF 2

SCALE
AS
SHOWN

Ellicott City Projects II & IV
Contract # 355-5

FB# 4587

SEPT 1, 1971

WS 355-S/2