

VICINITY MAP
Scale: 1"=2000'

GENERAL NOTES

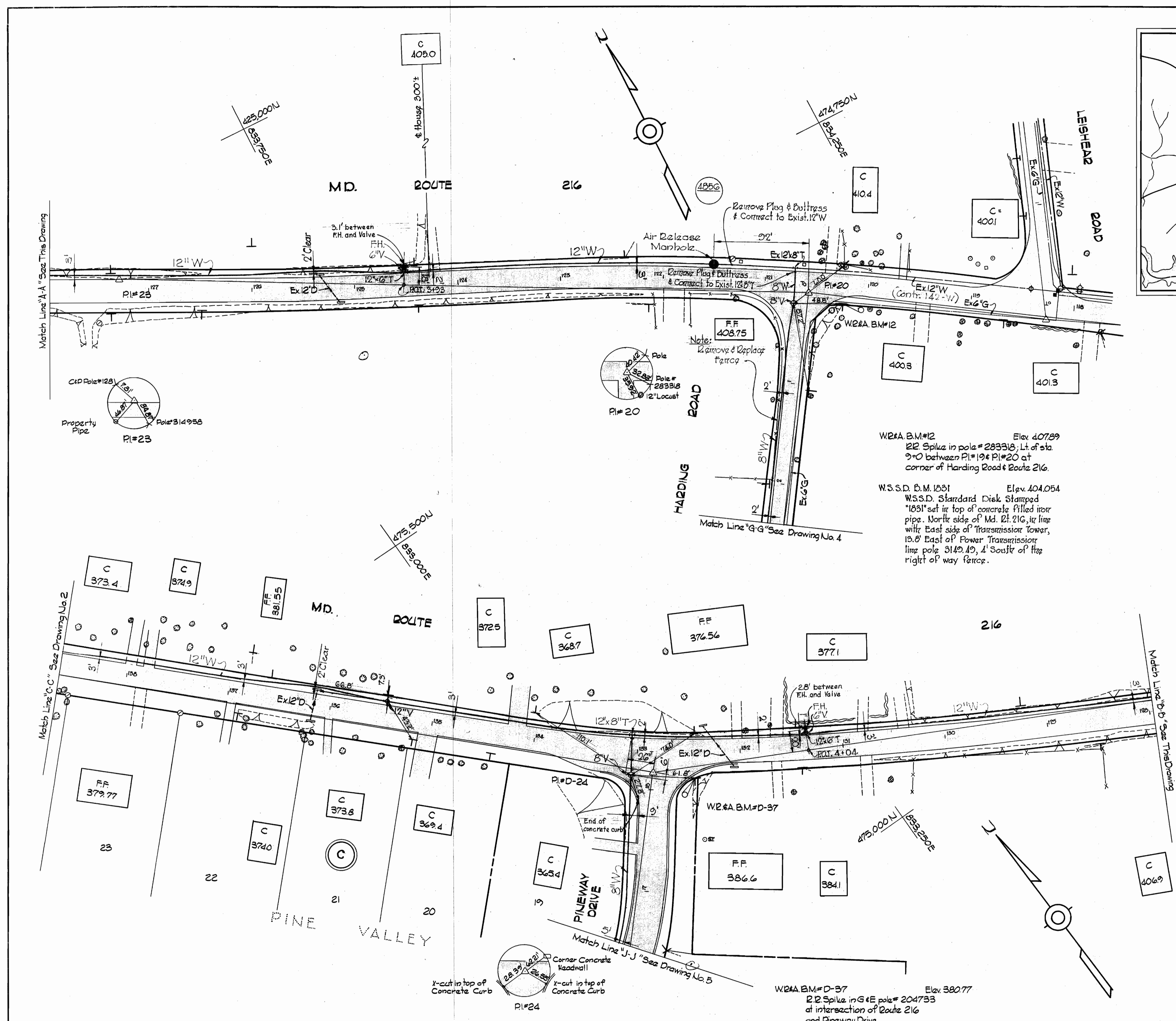
1. Approximate location of existing mains are shown. The Contractor shall take all necessary precautions to protect existing mains and services and maintain uninterrupted supply. Any damage incurred shall be repaired immediately.
2. All pipe elevations shown are invert elevations.
3. The Contractor shall locate existing utilities a minimum of two weeks in advance of construction operations in vicinity of utilities.
4. For all Standard Details see standards bound in Specifications.
5. All water mains shall have a minimum of 3 1/2' cover.
6. Block all fittings with concrete see standard details bound in Specifications.
7. All Fire Hydrants shall be strapped to tee and shall be buttressed with concrete in accordance with Standard Details.
8. Clear all utilities by a minimum of 6', clear all poles by 2'-0" minimum or tunnel as required.
9. All Horizontal and Vertical Controls are based on Maryland State Datum.

QUANTITIES	
ITEM	QUANTITY
12" Water	4,970 LF
8" Water	5,030 LF
6" Water	2,600 LF
Fire Hydrants	13
Air Release Manholes	4



Kenneth A. McCord

Project W-21
Contract 354-W

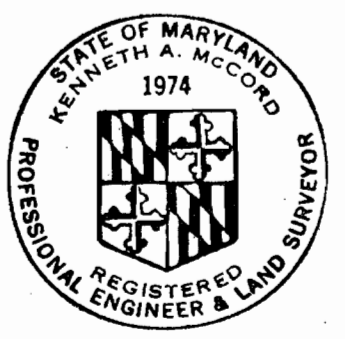
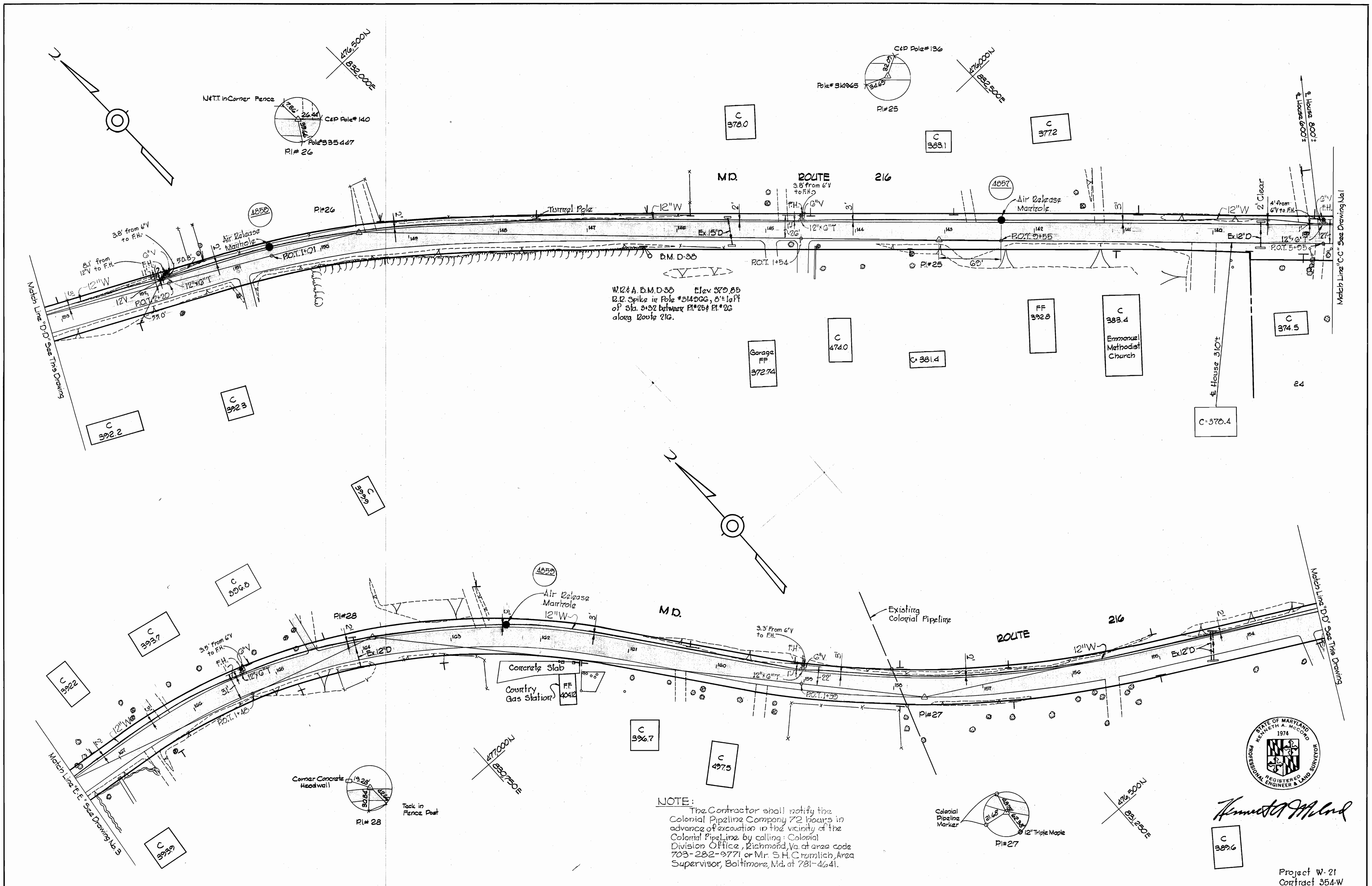


WHITMAN, REQUARDT & ASSOCIATES ENGINEERS 1304 ST. PAUL ST. BALTIMORE, MARYLAND	DEPARTMENT OF PUBLIC WORKS HOWARD COUNTY, MARYLAND DATE 5-20-70 <i>W. O. Pellet</i> CHIEF-BUREAU OF WATER AND SEWER	CONTRACT NO. 354-W	PLAN OF WATER MAINS	ELECTION DISTRICT GUILFORD NO. 6	DRAWING NO. 1 OF 8	SCALE AS SHOWN	474-477 475-477 476-476
					STAKEOUT AND DIARY in F.B. # 4746		

W. O. 6185-2

WS 354-W/1

WS 354-W/2



Kenneth A. McCord

Project W-21
 Contract 354-W

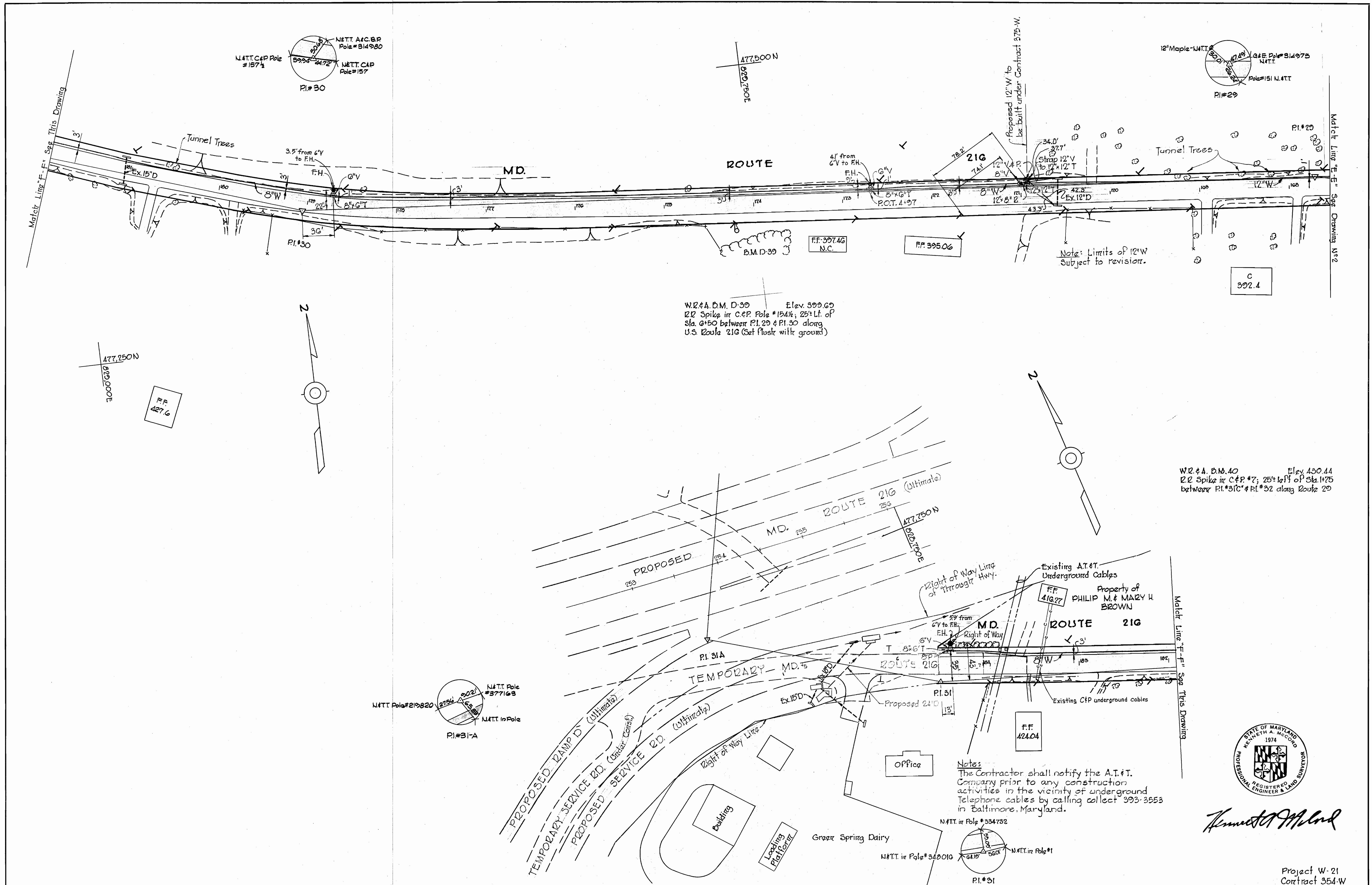
WHITMAN, REQUARDT & ASSOCIATES ENGINEERS 1304 ST. PAUL ST. BALTIMORE, MARYLAND	DEPARTMENT OF PUBLIC WORKS HOWARD COUNTY, MARYLAND DATE 5-20-70 <i>W. O. Falber</i> CHIEF - BUREAU OF WATER AND SEWER	CONTRACT NO. 354-W	PLAN OF WATER MAINS	ELECTION DISTRICT GUILFORD NO. 6	DRAWING NO. 2 OF 8 SCALE 1"=50' 470-476 476-476
---	---	--------------------	------------------------	-------------------------------------	--

W. O. 6185-2

AS BUILT SEPTEMBER 24, 1970

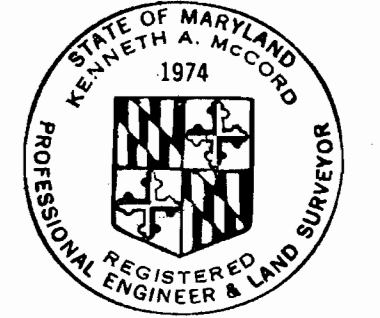
F.B. 4586

WS 354-W/3



W.R. & A. D.M. D-39 Elev. 399.69
 2/2 Spike in C&P Pole #154 1/2; 25' Lt. of
 Sta. 4+50 between P.I. 29 & P.I. 30 along
 U.S. Route 216 (Set flush with ground)

W.R. & A. D.M. 40 Elev. 430.44
 2/2 Spike in C&P #7; 25' Lt. of Sta. 1+75
 between P.I. #310 & P.I. #32 along Route 20



Kenneth A. McLeod

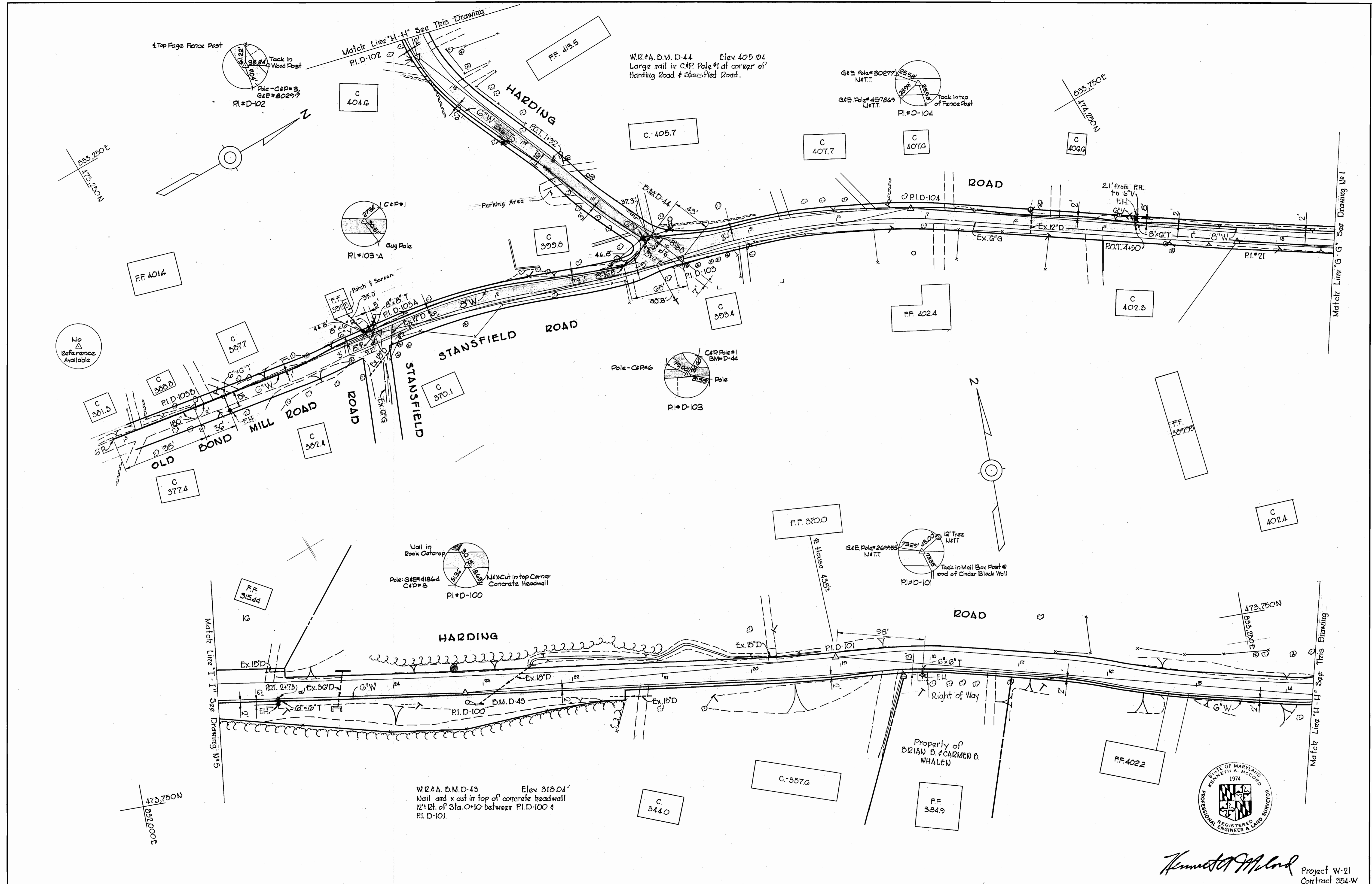
Project W-21
 Contract 354-W

WHITMAN, REQUARDT & ASSOCIATES ENGINEERS 1304 ST. PAUL ST. BALTIMORE, MARYLAND	DEPARTMENT OF PUBLIC WORKS HOWARD COUNTY, MARYLAND 5-20-70 DATE <i>ed O'Fallon</i> CHIEF-BUREAU OF WATER AND SEWER	CONTRACT NO. <u>354-W</u>	PLAN OF WATER MAINS	ELECTION DISTRICT GUILFORD NO. 6	DRAWING NO. <u>3</u> OF <u>8</u> SCALE 1" = 50' 427-475
---	---	---------------------------	------------------------	-------------------------------------	--

W. O. 6185-2

AS BUILT SEPTEMBER 24, 1970

FB 4586
 FB 4602

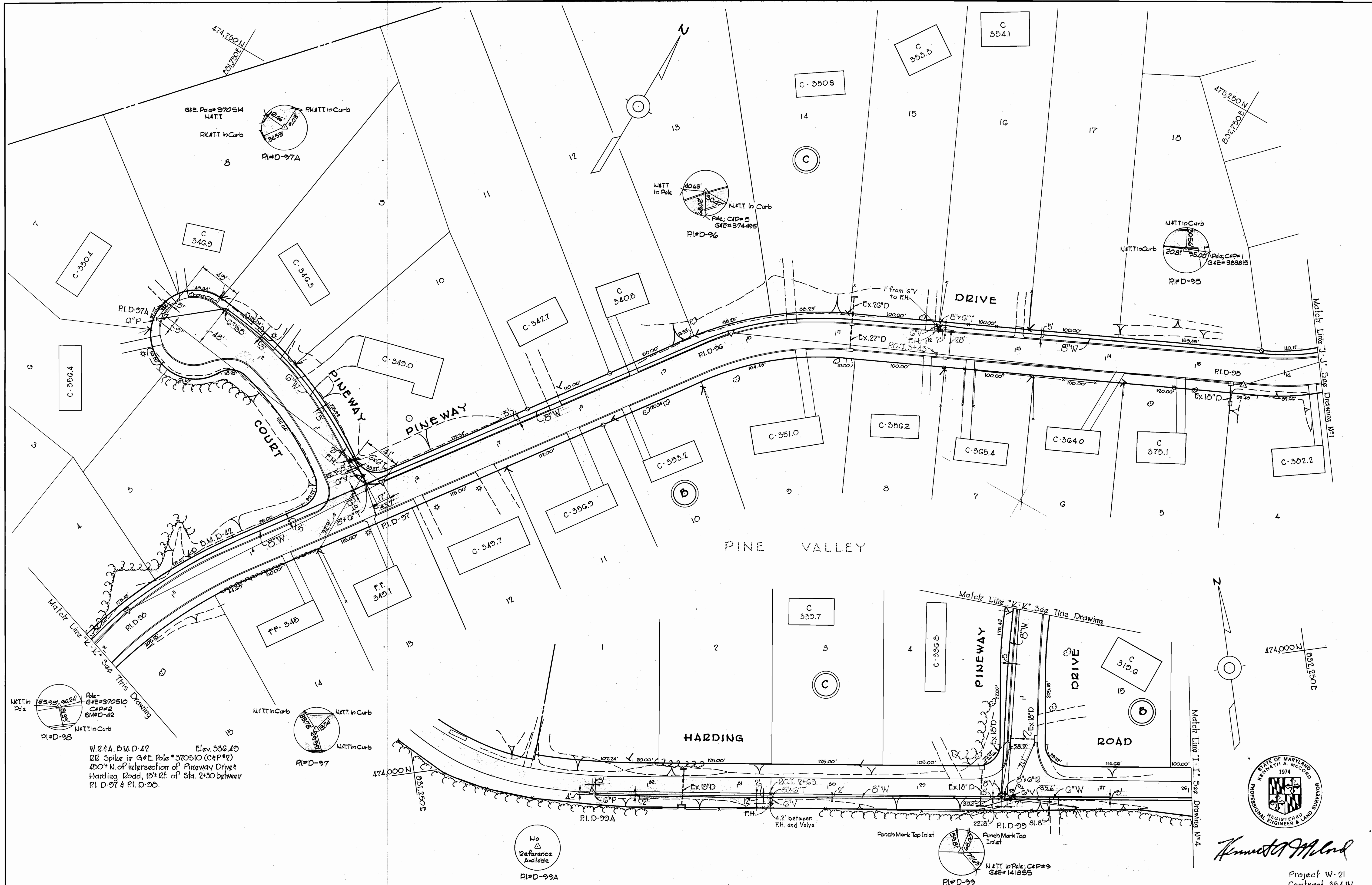


Kenneth A. McCoy Project W-21
Contract 354-W

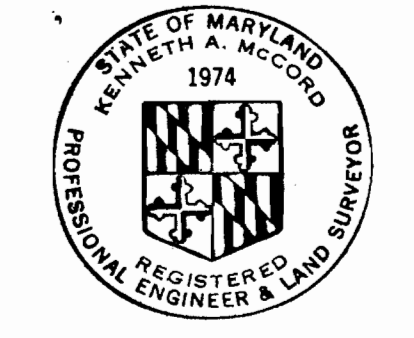
WHITMAN, REQUARDT & ASSOCIATES ENGINEERS 1304 ST. PAUL ST. BALTIMORE, MARYLAND	DEPARTMENT OF PUBLIC WORKS HOWARD COUNTY, MARYLAND <i>Ed J. Gilbert</i> DATE: 5-20-70 CHIEF-BUREAU OF WATER AND SEWER	CONTRACT NO. <u>354-W</u>	PLAN OF WATER MAINS	ELECTION DISTRICT GUILFORD NO.6	DRAWING NO. <u>4</u> OF <u>8</u> SCALE 1"=50' 473-476 473-477 474-477
---	---	---------------------------	------------------------	------------------------------------	---

WS 354-W/H

WS 354-W/S



W.2 & A. D.M.D-42 Elev. 536.45
 22 Spike in G&E. Pole #370510 (C&P#2)
 450' N. of intersection of Pineway Drive &
 Harding Road, 15' E. of Sta. 2+30 between
 P.I. D-97 & P.I. D-90.



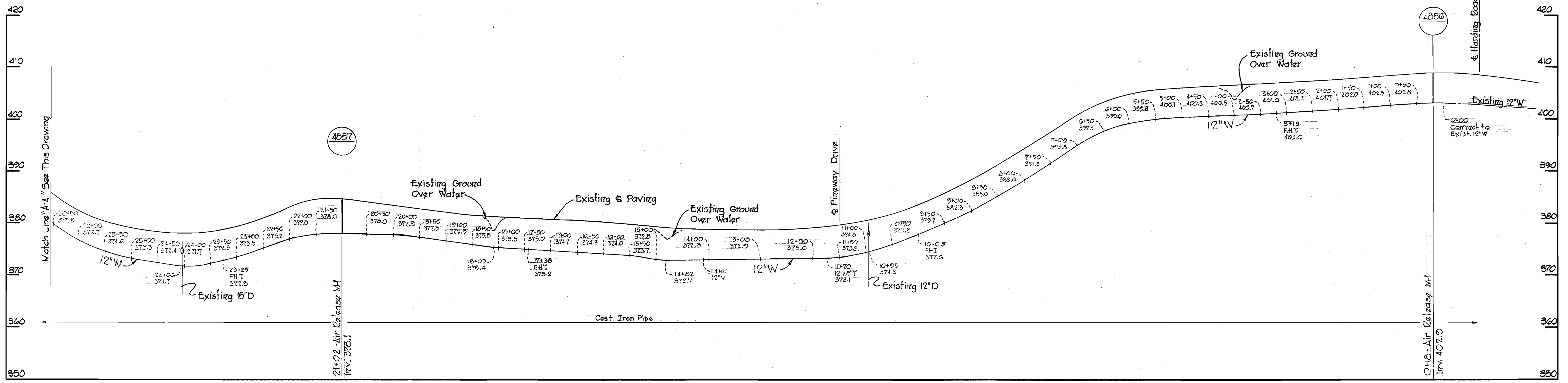
Kenneth A. McCord

Project W-21
 Contract 354-W

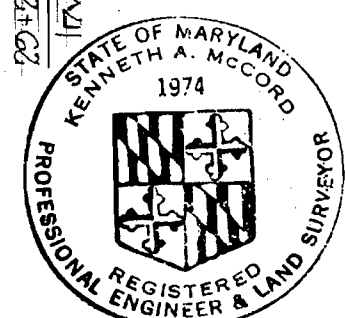
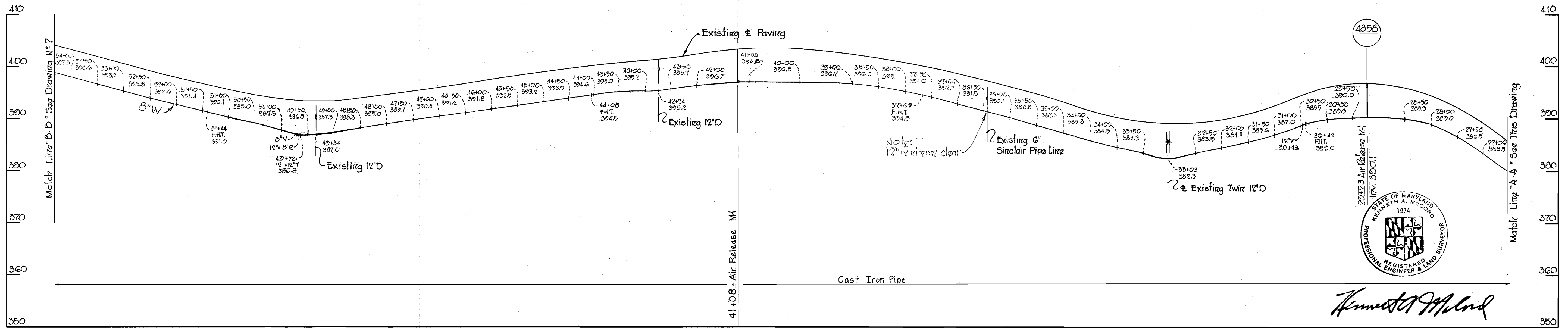
WHITMAN, REQUARDT & ASSOCIATES ENGINEERS 1304 ST. PAUL ST. BALTIMORE, MARYLAND	DEPARTMENT OF PUBLIC WORKS HOWARD COUNTY, MARYLAND DATE 5-20-70 <i>W. O. Filbeck</i> CHIEF-BUREAU OF WATER AND SEWER	CONTRACT NO. 354-W	PLAN OF WATER MAINS	ELECTION DISTRICT GUILFORD NO. 6	DRAWING NO. 5 OF 8 SCALE 1" = 50' 473-ATG 474-ATG
---	--	--------------------	------------------------	-------------------------------------	--

WS 354-W/6

MD. ROUTE 216



MD. ROUTE 216



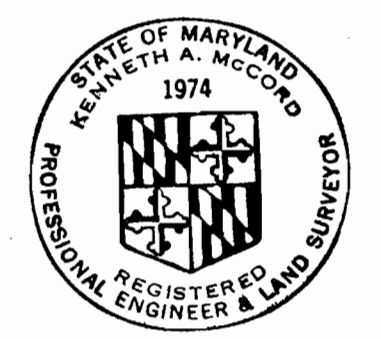
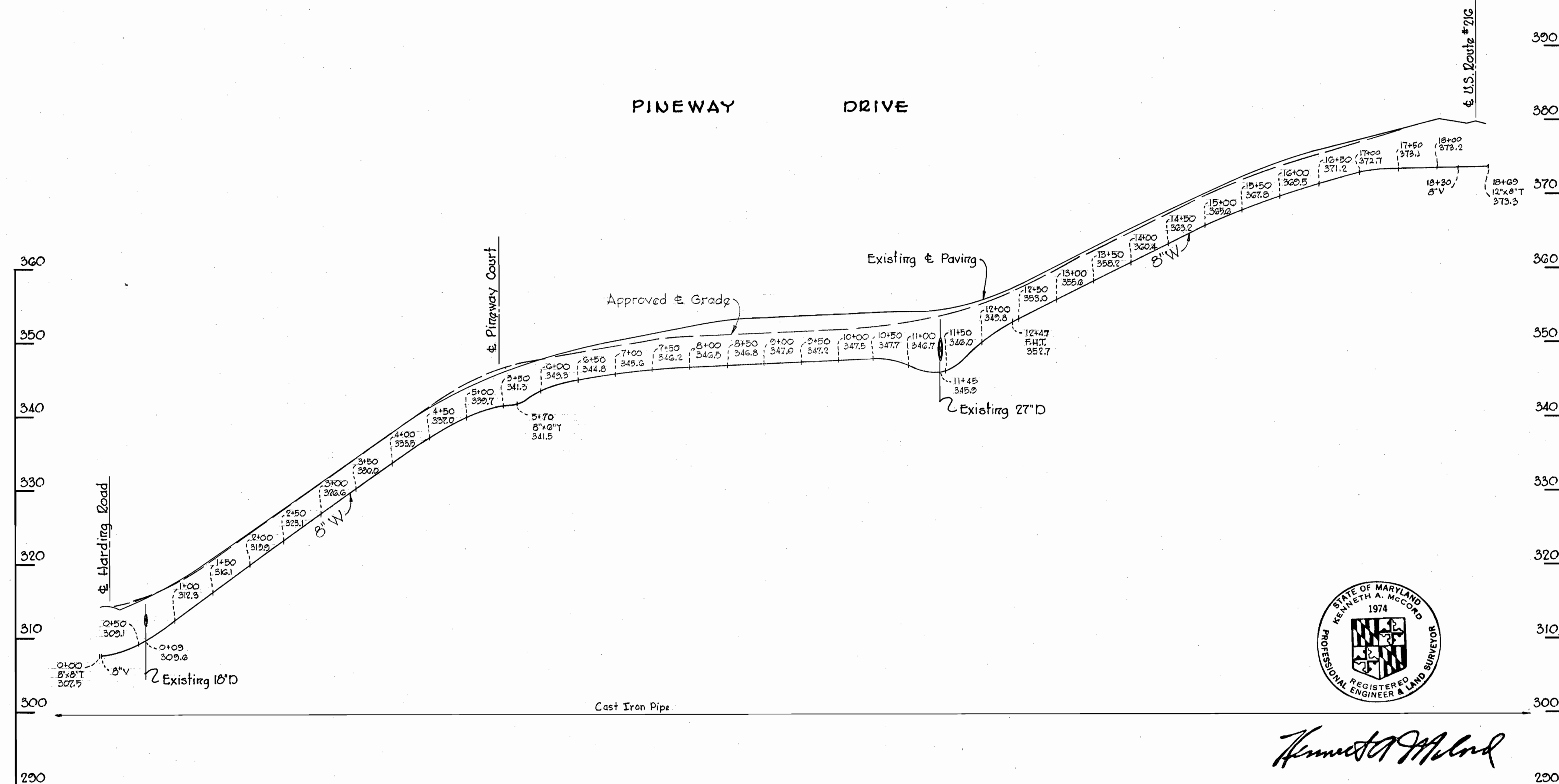
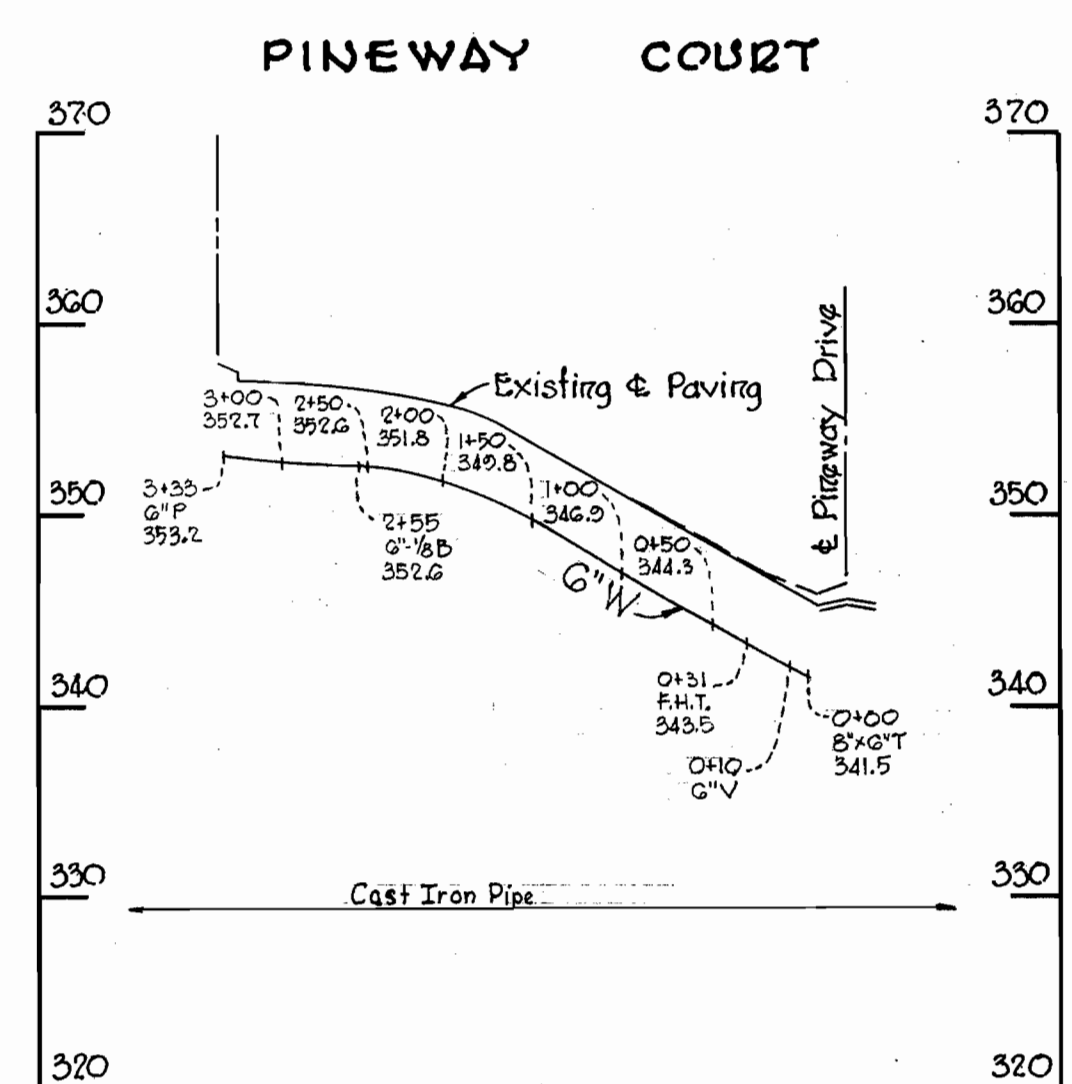
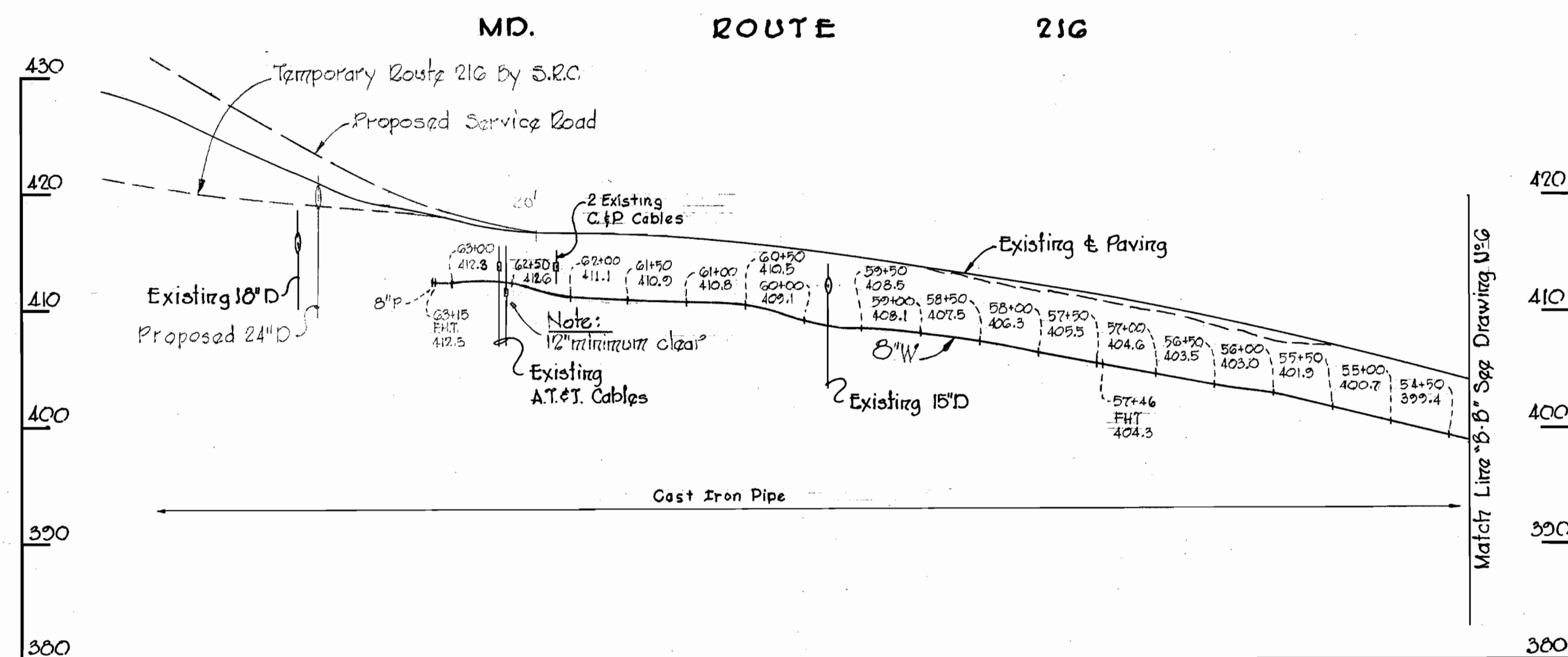
Kenneth A. McLeod

Project W-21
Contract 354-W

WHITMAN, REQUARDT & ASSOCIATES ENGINEERS 1304 ST. PAUL ST. BALTIMORE, MARYLAND	DEPARTMENT OF PUBLIC WORKS HOWARD COUNTY, MARYLAND DATE 5-20-70 <i>W. O. Libbers</i> CHIEF-BUREAU OF WATER AND SEWER	CONTRACT NO. 354-W	PROFILES OF WATER MAINS	ELECTION DISTRICT GUILFORD NO. 6	DRAWING NO. 6	SCALE H: 1"=100'
					OF 8	V: 1"=10'

W. O. 6185-2

AS BUILT SEPTEMBER 24, 1970



Kenneth A. McCord

Project W-21
Contract 354-W

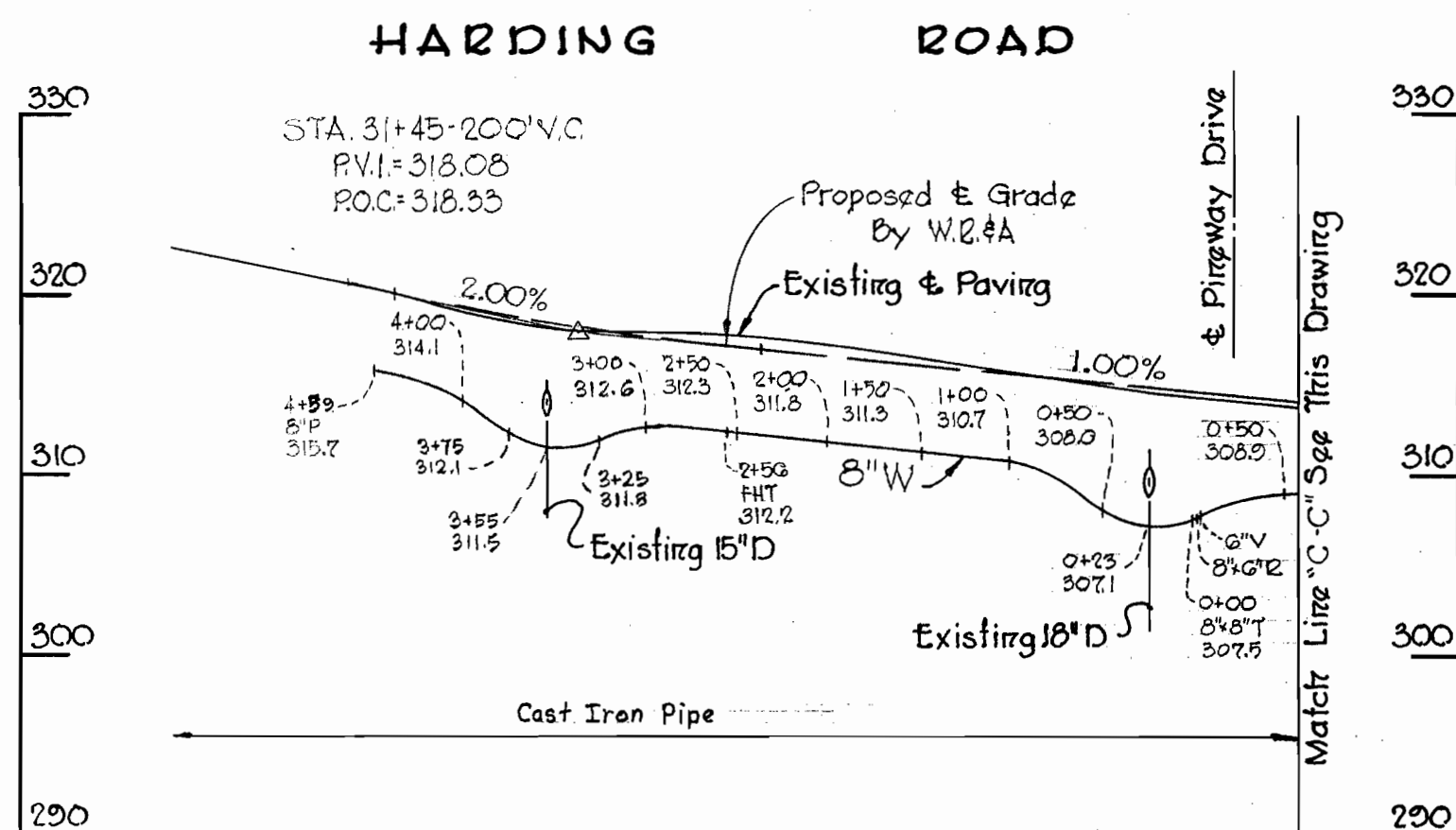
WHITMAN, REQUARDT & ASSOCIATES ENGINEERS 1304 ST. PAUL ST. BALTIMORE, MARYLAND	DEPARTMENT OF PUBLIC WORKS HOWARD COUNTY, MARYLAND DATE 5-20-70 <i>W. O. Gilbert</i> CHIEF-BUREAU OF WATER AND SEWER	CONTRACT NO. 354-W	PROFILES OF WATER MAINS	ELECTION DISTRICT GUILFORD NO. 6	DRAWING NO. 7 OF 8 SCALE H: 1"=100' V: 1"=10'
---	--	--------------------	----------------------------	-------------------------------------	---

W. O. 6185-2

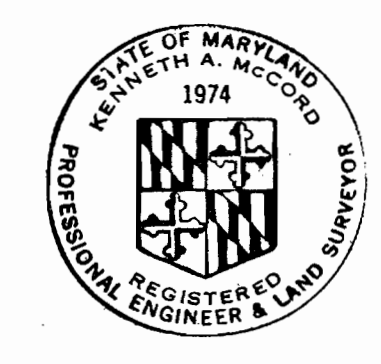
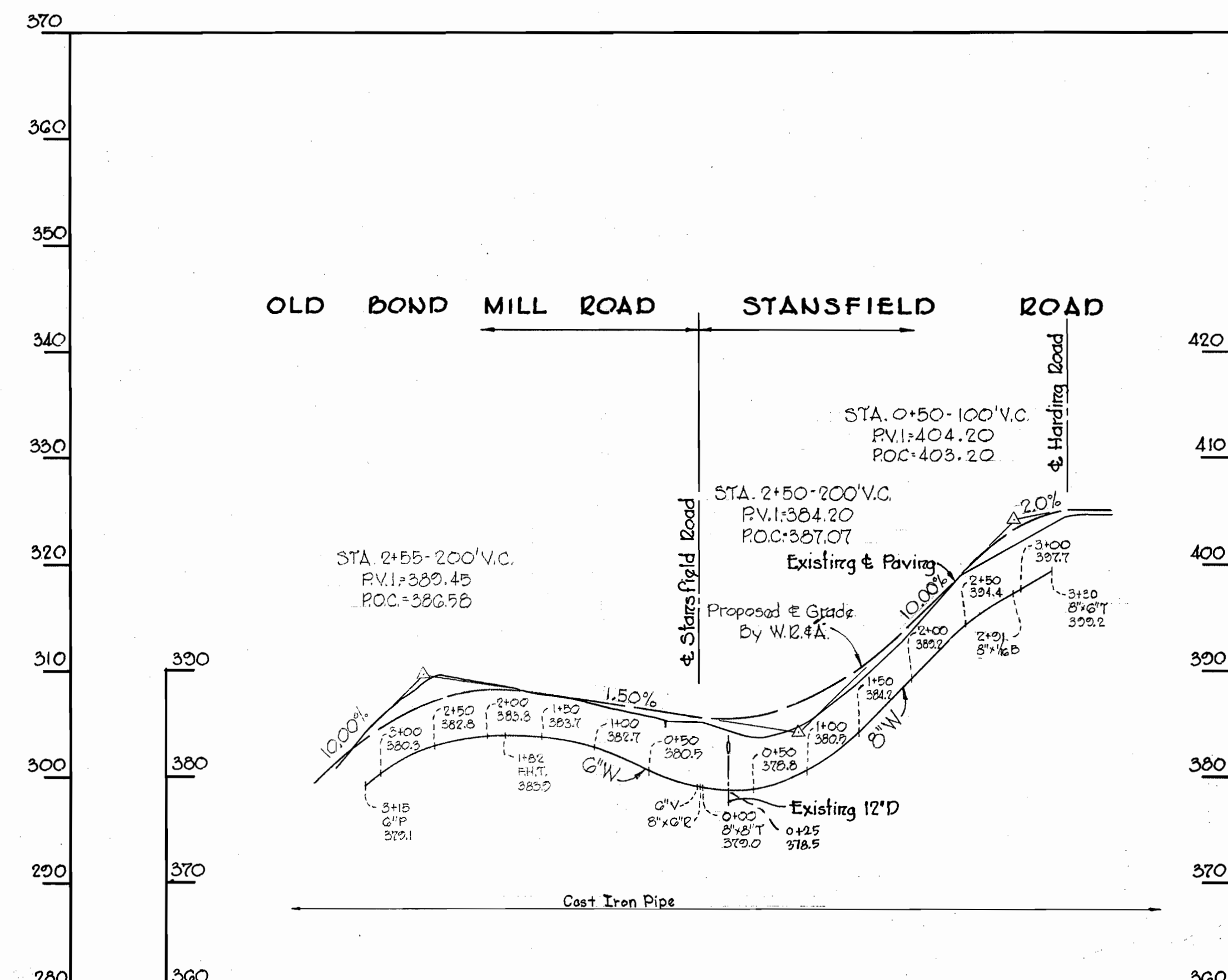
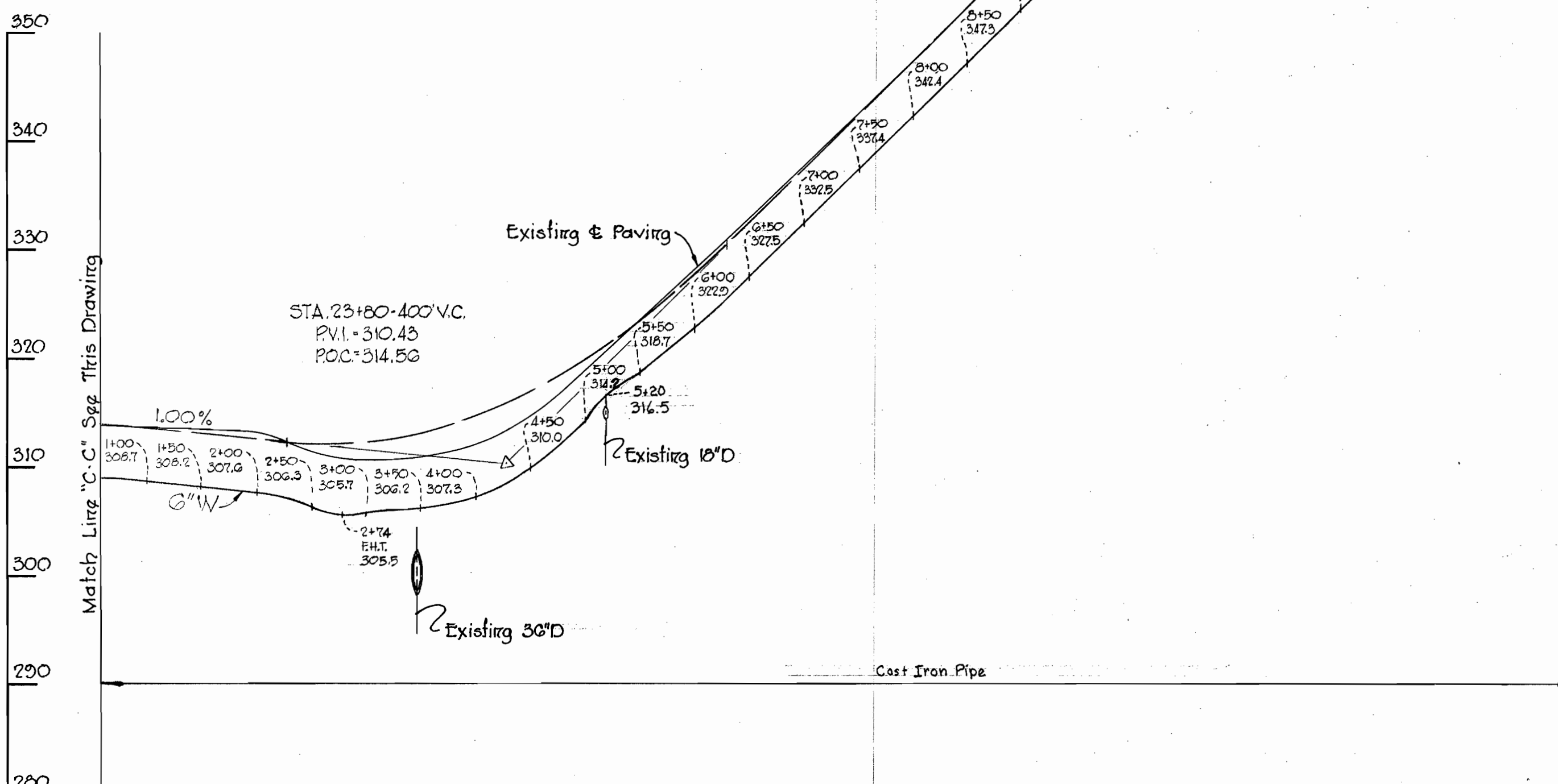
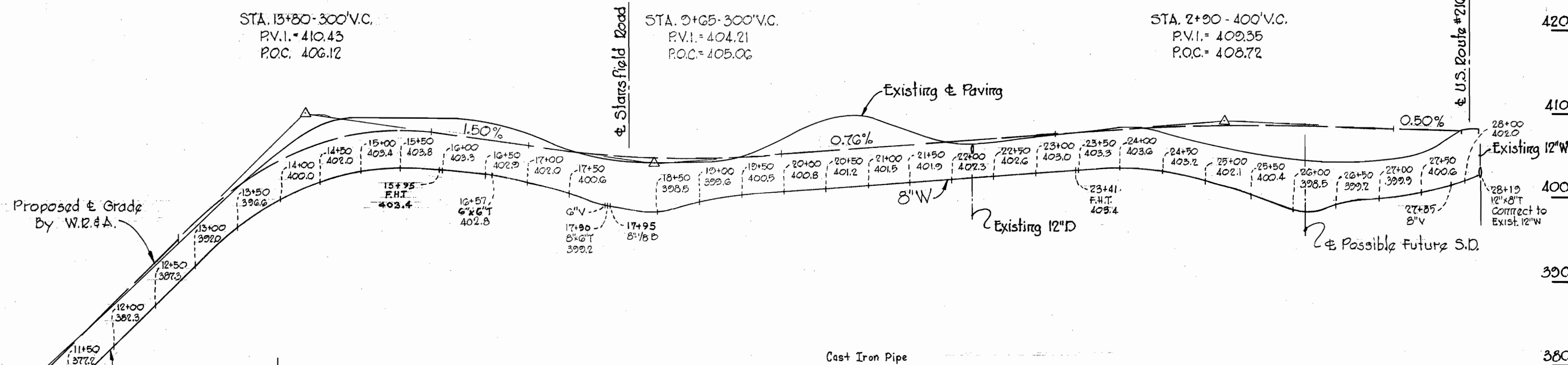
AS BUILT SEPTEMBER 24, 1970

WS 354-W/1

WS 354-W/8



HARDING ROAD



Kenneth A. McCord

Project W-21
Contract 354-W

WHITMAN, REQUARDT & ASSOCIATES ENGINEERS 1304 ST. PAUL ST. BALTIMORE, MARYLAND	DEPARTMENT OF PUBLIC WORKS HOWARD COUNTY, MARYLAND 5-20-70 DATE	CONTRACT NO. 354-W	PROFILES OF WATER MAINS	ELECTION DISTRICT GUILFORD NO. 6	DRAWING NO. 8 OF 8	SCALE H ¹ "=100' V ¹ "=10'
---	--	--------------------	----------------------------	-------------------------------------	--------------------------	--

W. O. 6185-2

AS BUILT SEPTEMBER 24, 1970