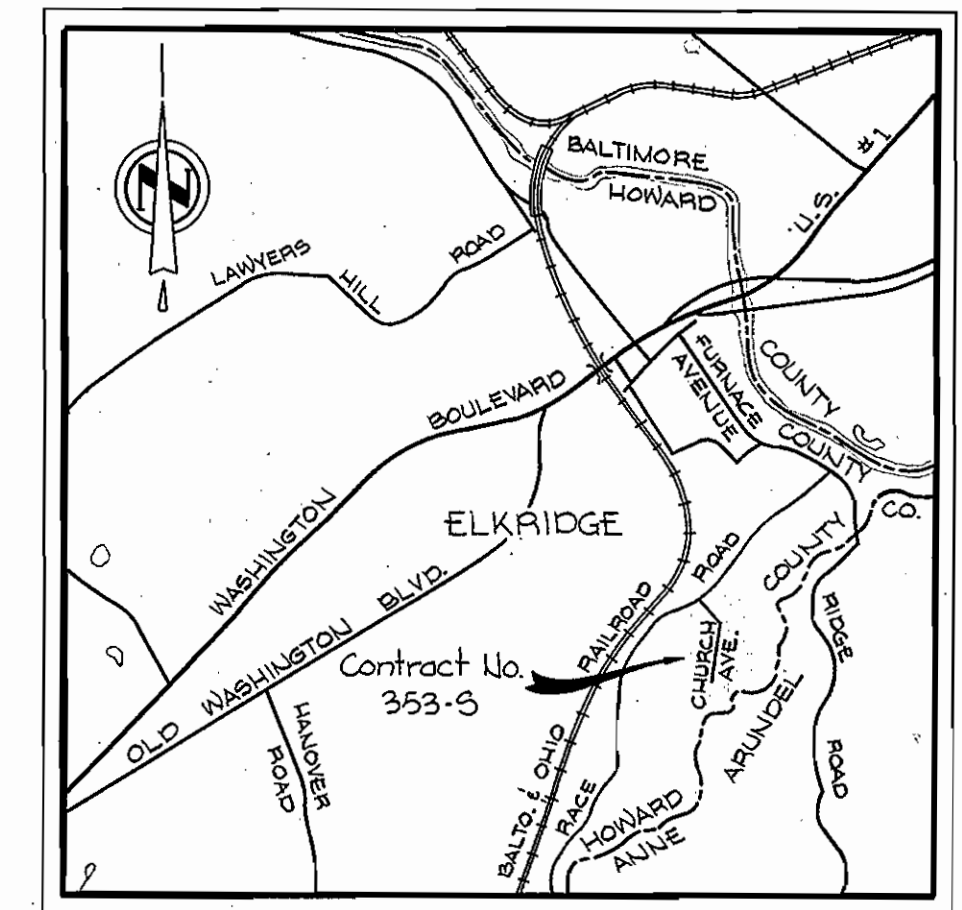
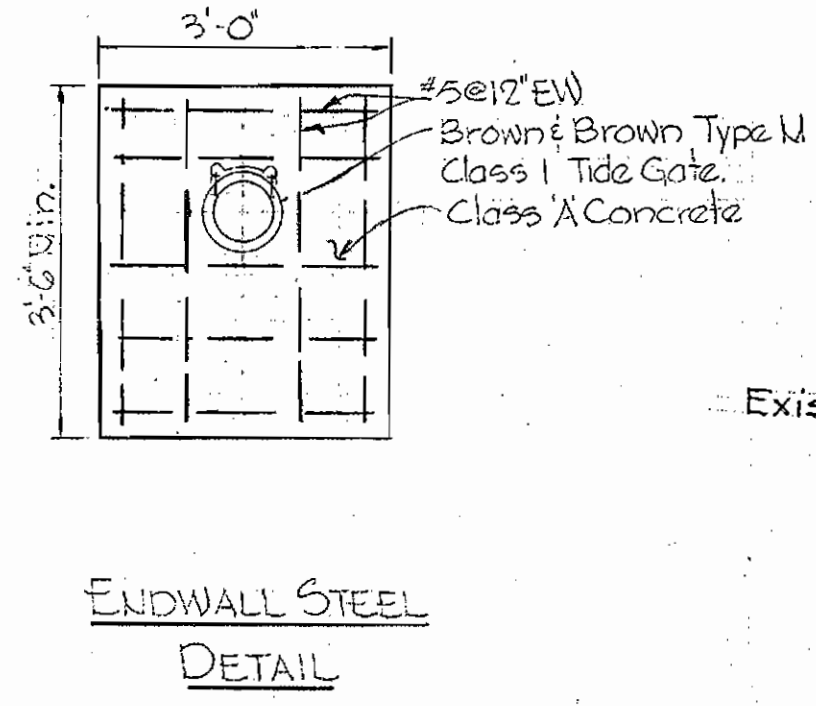
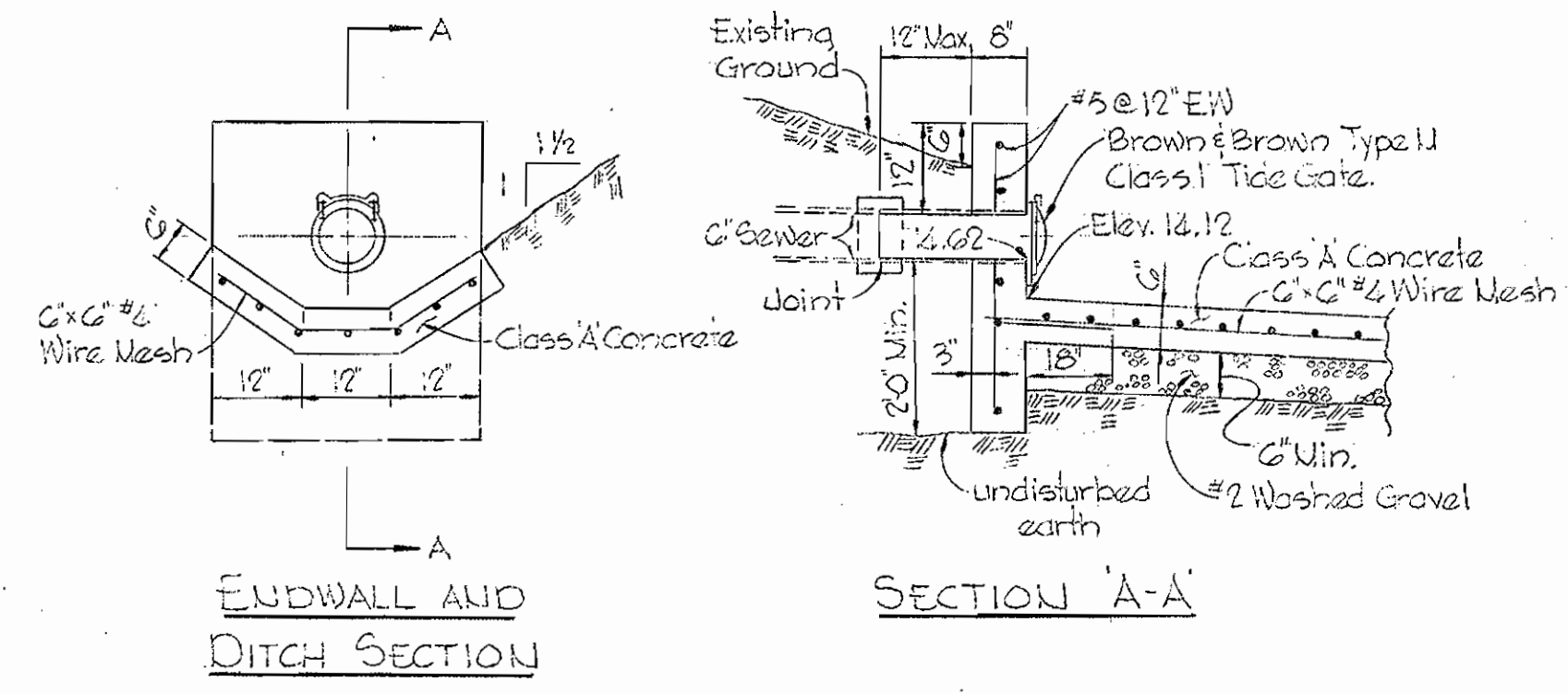


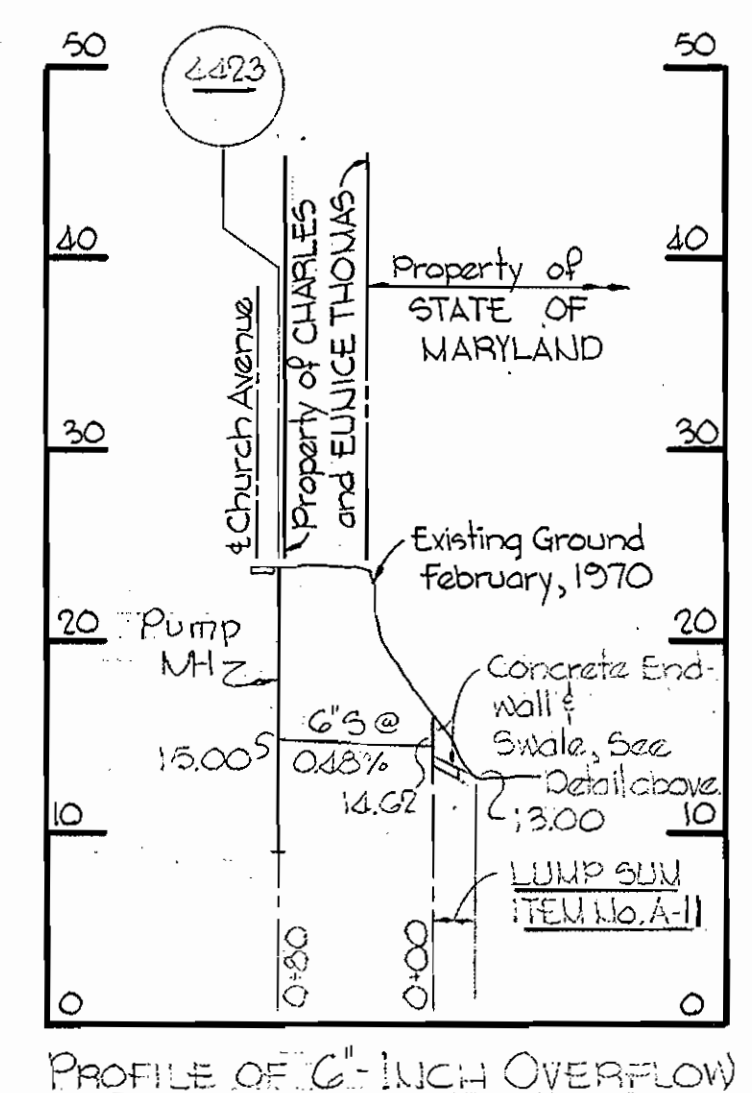
W.P.A. BM.#DA-3 Elev. 33.77
 R.P. spike in Pole #238258 on North
 side of Race Road @ intersection of
 Race Road & Church Avenue.



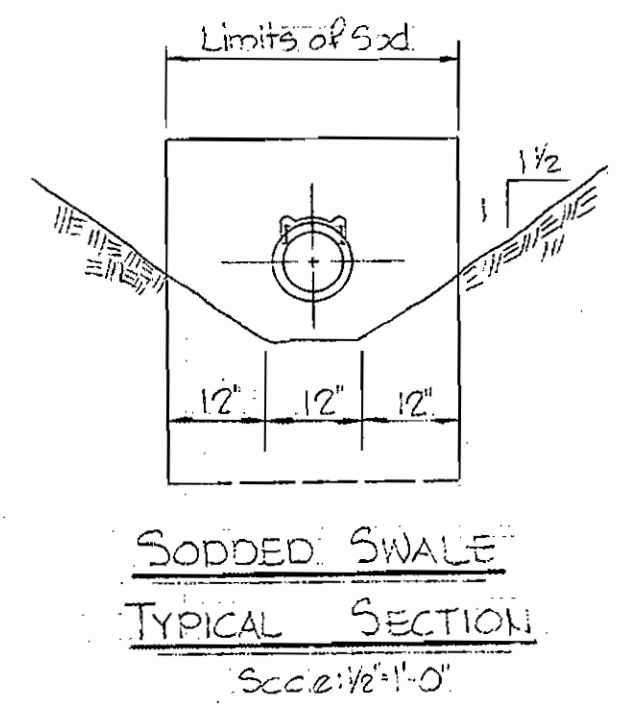
VICINITY MAP
 Scale: 1"=2,000'



ENDWALL AND SWALE DETAIL
 Scale: 1/2"=1'-0"

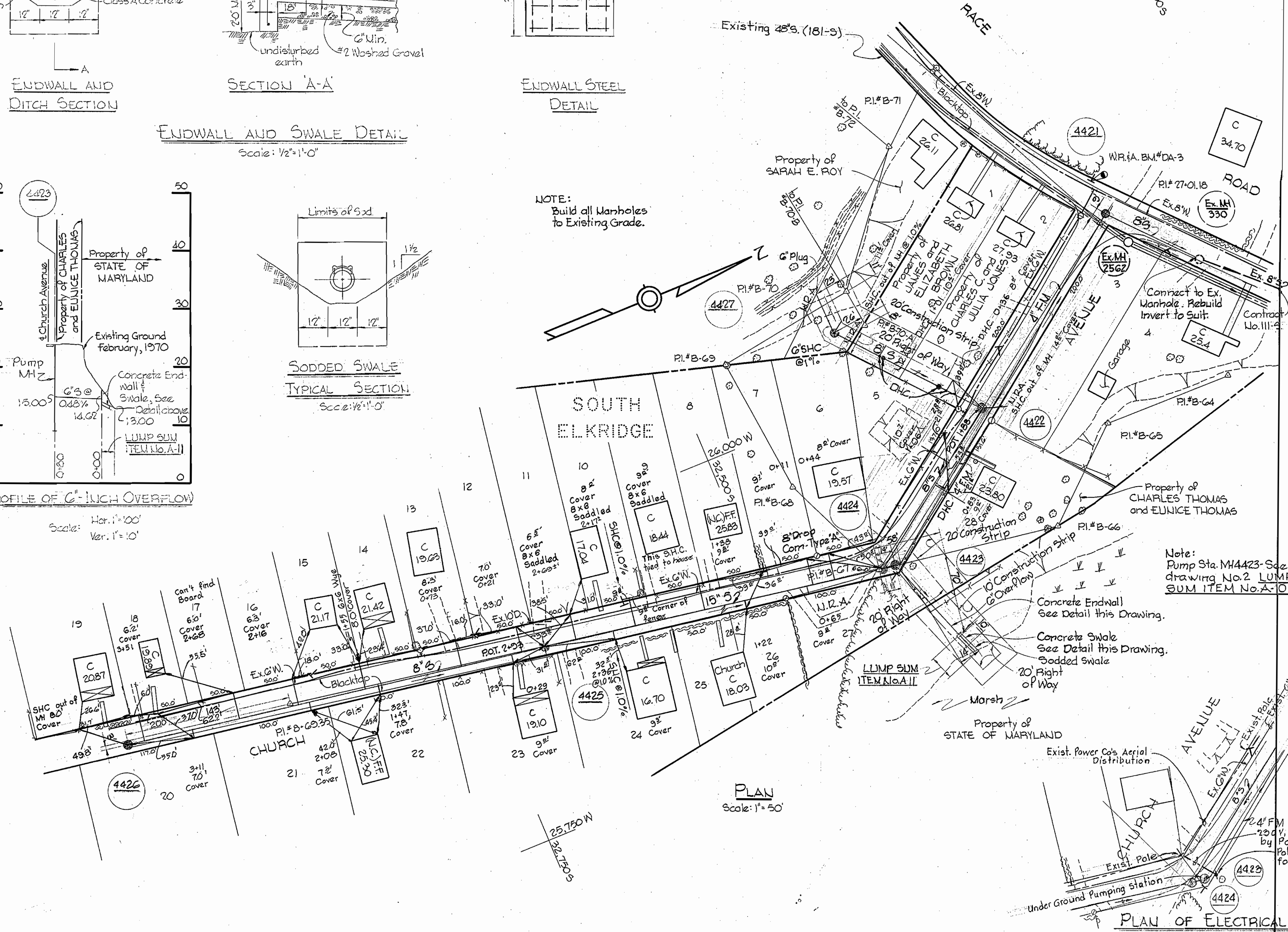


PROFILE OF 6" INCH OVERFLOW
 Scale: Hor. 1"=100'
 Ver. 1"=10'



SODDED SWALE
 TYPICAL SECTION
 Scale: 1/2"=1'-0"

NOTE:
 Build all Manholes
 to Existing Grade.



PLAN
 Scale: 1"=50'

GENERAL NOTES

1. Approximate location of existing mains are shown. The Contractor shall take all necessary precautions to protect existing mains and services and maintain uninterrupted supply. Any damage incurred shall be repaired immediately.
2. All pipe elevations shown are invert elevations.
3. The Contractor shall locate existing utilities a minimum of two weeks in advance of construction operations in vicinity of utilities.
4. For all standard details see standards bound in specifications.
5. Clear all utilities by a minimum of 6', clear all poles by 2'-0' minimum or tunnel as required.
6. The Contractor shall provide a joint in all sewer mains within 2'-0' of exterior manhole walls.
7. All manholes shall be 4'-0" inside diameter except where noted.
8. All horizontal and vertical controls are based on Howard County Datum.
9. All sewer pipe shall be VCPX, CSPX, or ACP Class 2400 unless otherwise noted.
10. Any 12" Manhole walls shown on profiles pertain to brick manholes only.

QUANTITIES	
4" Force Main	350 LF
6" Sewer Main	80 LF
8" Sewer Main	770 LF
15" Sewer Main	300 LF

Stakeout & Diary F.B.# 5386



Kenneth A. McLeod

PLAN OF ELECTRICAL SERVICE
 Scale: 1"=50'

WHITMAN, REQUARDT & ASSOCIATES
 ENGINEERS
 1304 ST. PAUL ST.
 BALTIMORE, MARYLAND

DEPARTMENT OF PUBLIC WORKS
 HOWARD COUNTY, MARYLAND
 4-23-70
W.O. Fallick
 CHIEF-BUREAU OF WATER AND SEWER

CONTRACT NO. 353-S

PLAN, PROFILE & DETAILS
 OF SEWER MAINS

SEWER EXTENSIONS
 CHURCH AVENUE, ELKRIDGE

DRAWING NO.	SCALE
NO. 1 OF 2	AS SHOWN

Nov. 13, 1974 F.B. 2000, F.B. 3075 AS BU

WS 363-5/1

