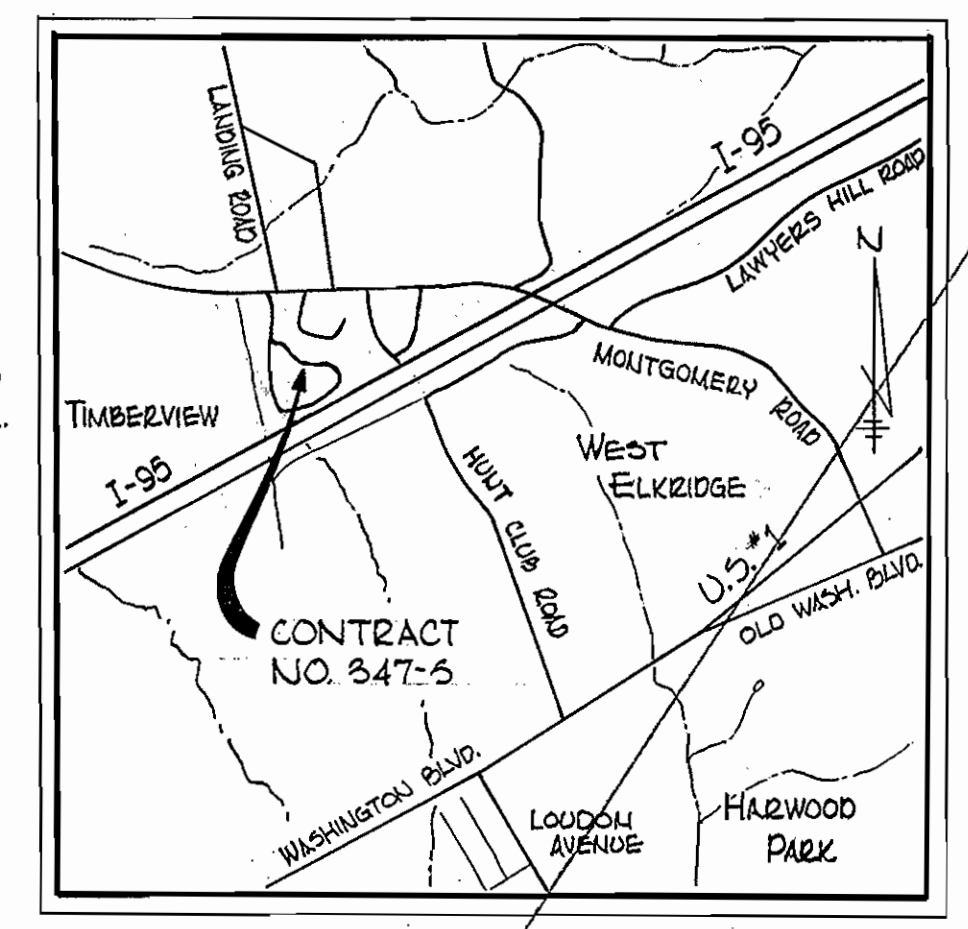
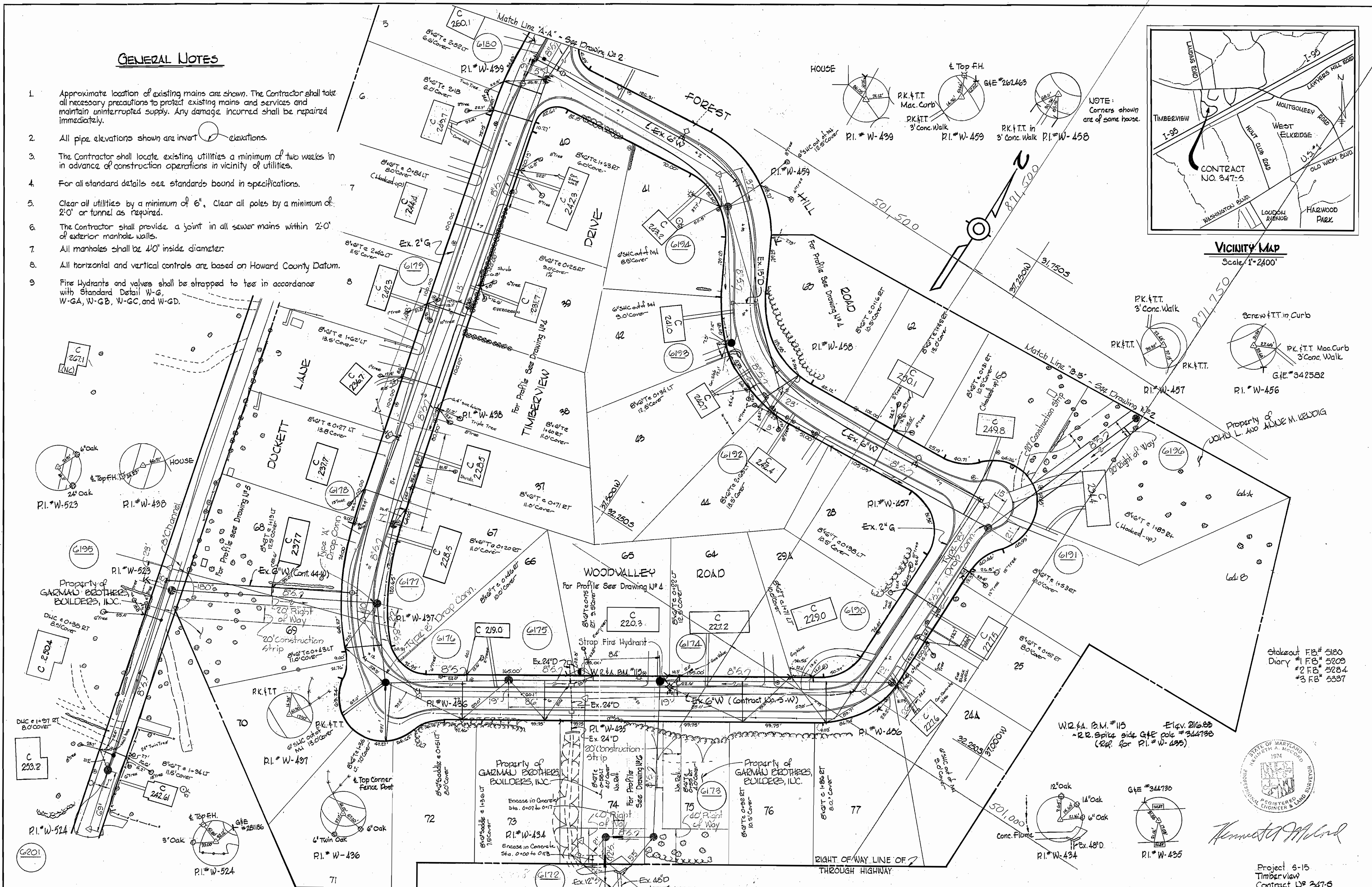
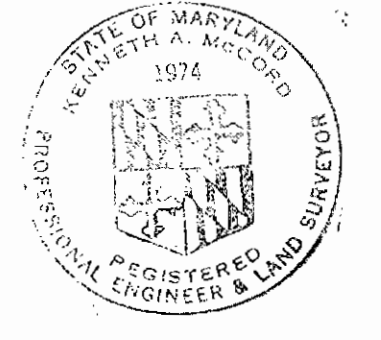


GENERAL NOTES

1. Approximate location of existing mains are shown. The Contractor shall take all necessary precautions to protect existing mains and services and maintain uninterrupted supply. Any damage incurred shall be repaired immediately.
2. All pipe elevations shown are invert elevations.
3. The Contractor shall locate existing utilities a minimum of two weeks in advance of construction operations in vicinity of utilities.
4. For all standard details see standards bound in specifications.
5. Clear all utilities by a minimum of 6". Clear all poles by a minimum of 2'0" or tunnel as required.
6. The Contractor shall provide a joint in all sewer mains within 2'0" of exterior manhole walls.
7. All manholes shall be 4'0" inside diameter.
8. All horizontal and vertical controls are based on Howard County Datum.
9. Fire Hydrants and valves shall be strapped to trees in accordance with Standard Detail W-G, W-GA, W-G-B, W-G-C, and W-G-D.



VICINITY MAP
Scale 1" = 2400'



Kenneth A. M. Wood

Project 6-15
Timberview
Contract U# 347-S

| | | |
|--------------------|----------------|--|
| DRAWING NO. 1 OF 6 | SCALE 1" = 50' | 32 SW 26 32 SW 25 33 SW 26 33 SW 25 |
|--------------------|----------------|--|

F.B. #1564, 0599 AS BUILT MAR 12 1974

WHITMAN, REQUARDT & ASSOCIATES
ENGINEERS
1304 ST. PAUL ST.
BALTIMORE, MARYLAND

DEPARTMENT OF PUBLIC WORKS
HOWARD COUNTY, MARYLAND
8-25-70
DATE

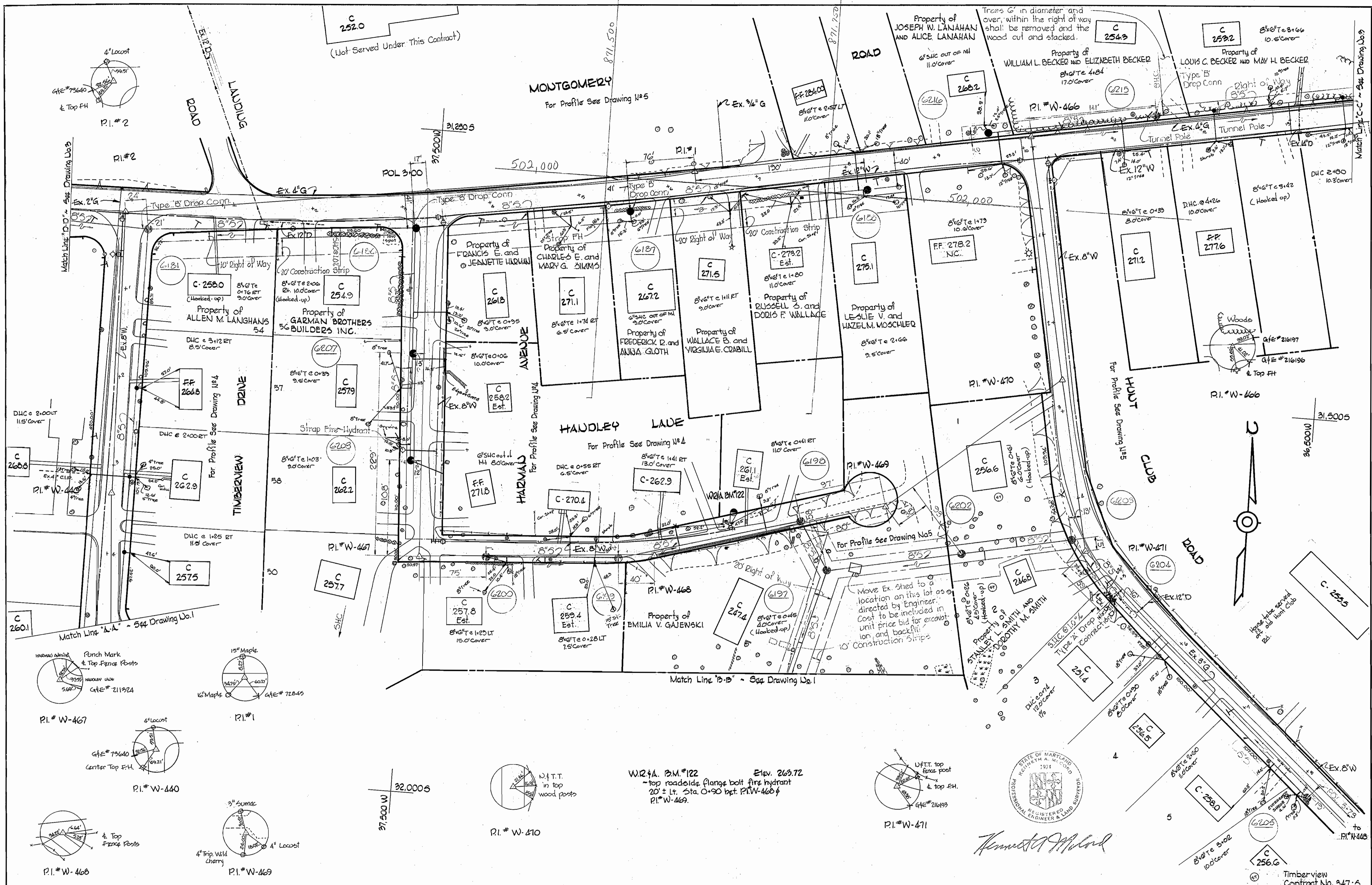
CONTRACT NO. 347-S

PLAN OF SEWER MAINS

TIMBERVIEW COLLECTING SEWERS

W.O.#6185-2

WS 347-S/1



WHITMAN, REQUARDT & ASSOCIATES
 ENGINEERS
 1304 ST. PAUL ST.
 BALTIMORE, MARYLAND

DEPARTMENT OF PUBLIC WORKS
 HOWARD COUNTY, MARYLAND
 DATE 8-25-70
W O Fallett
 CHIEF-BUREAU OF WATER AND SEWER

CONTRACT NO. 347S

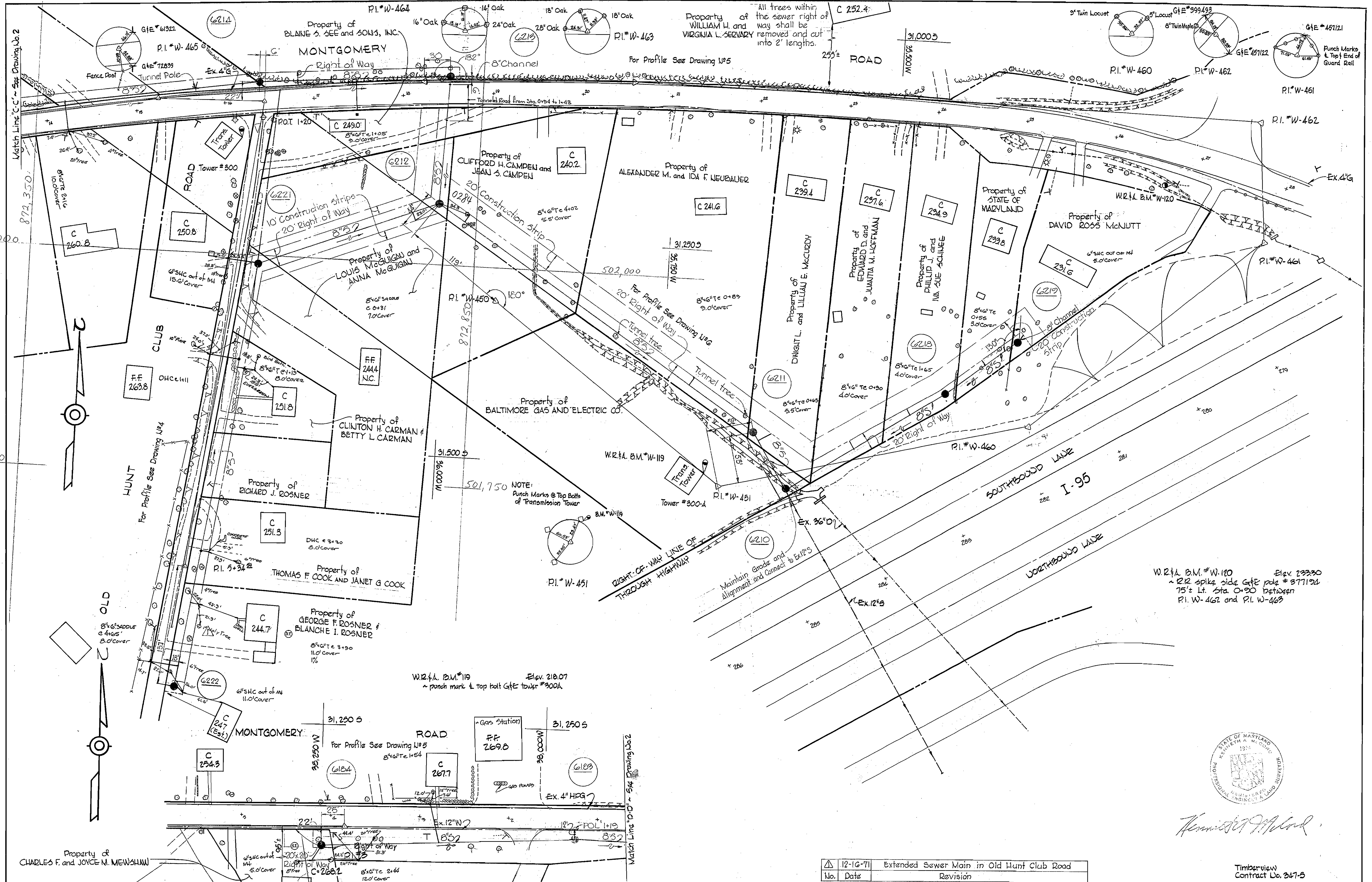
PLAN OF SEWER MAINS

TIMBERVIEW COLLECTING SEWERS

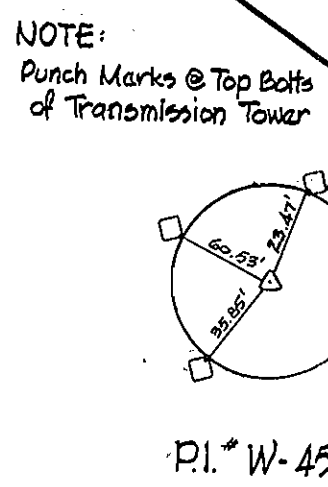
DRAWING NO. 2 OF 6
SCALE 1" = 50'
 32 SW 26
 32 SW 26

WS 347-S/2

WS 347-S/3



W.R.F.A. B.M. # W-120 Elev. 233.30
 ~ 212 spike side GFE pole # 37712d
 75'± Lt. Sta. 0+30 between
 P.I. W-462 and P.I. W-463



NOTE:
 Punch Marks @ Top Bolts
 of Transmission Tower



Handwritten signature

| | |
|----------|---|
| 12-16-71 | Extended Sewer Main in Old Hunt Club Road |
| No. Date | Revision |

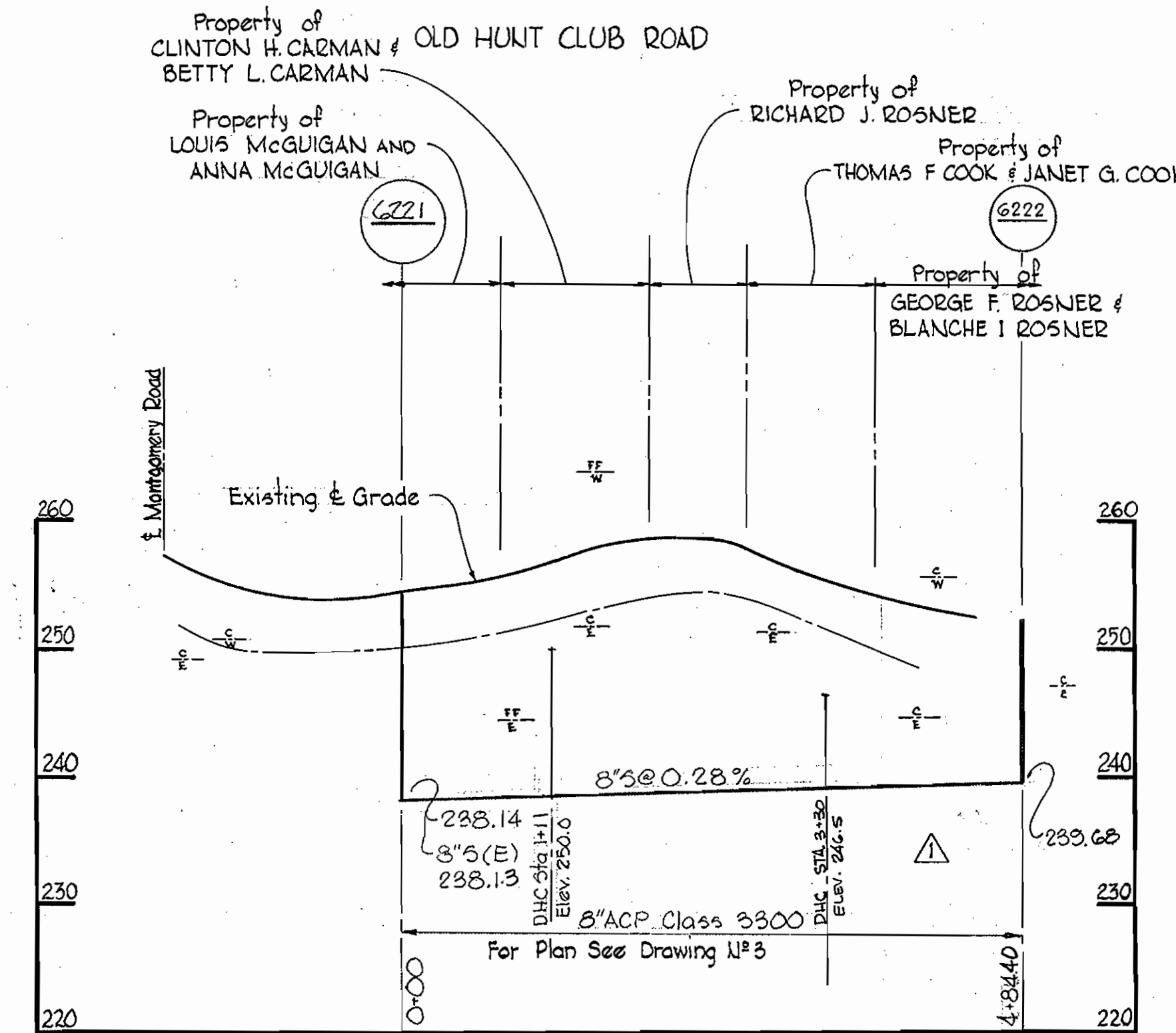
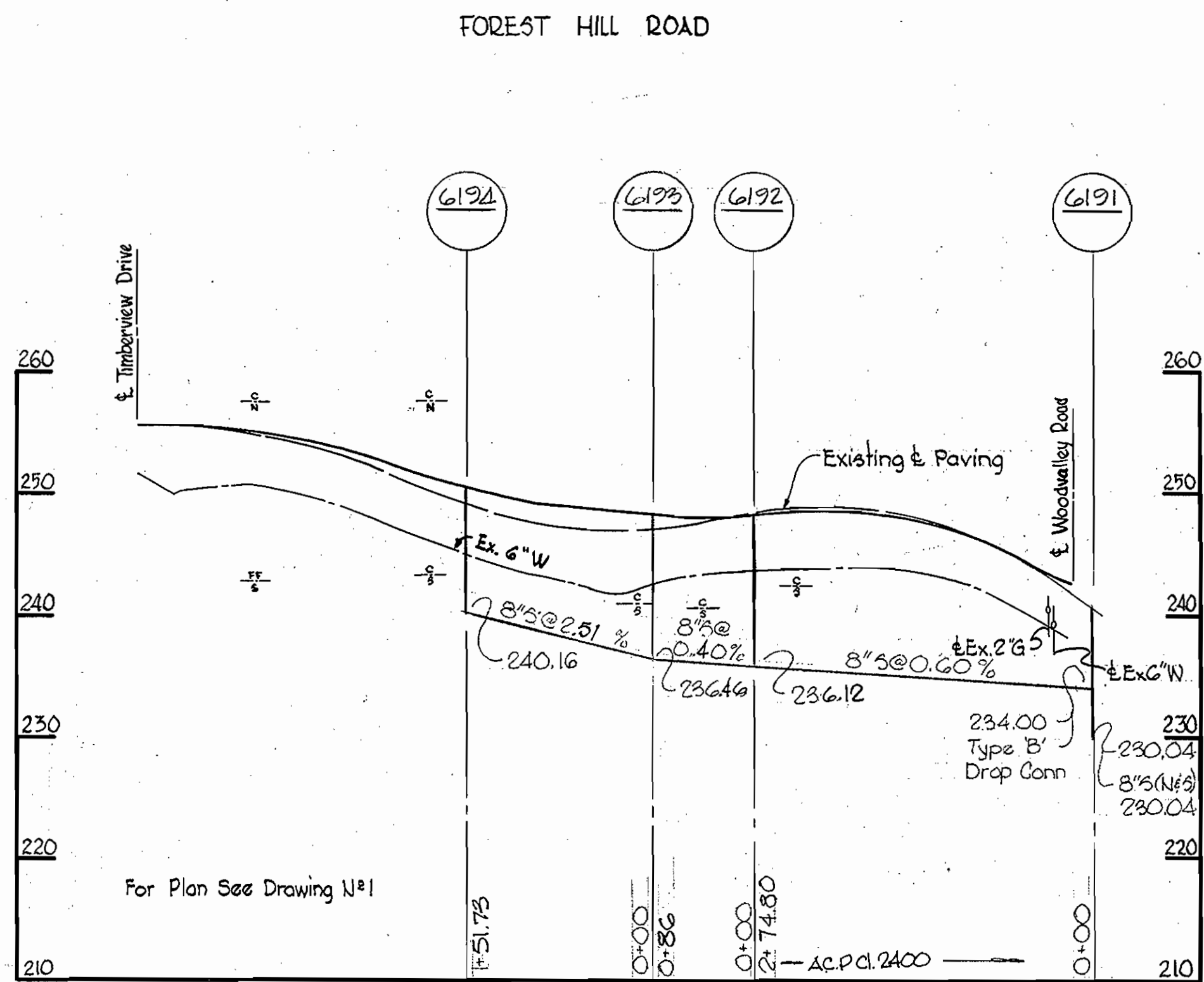
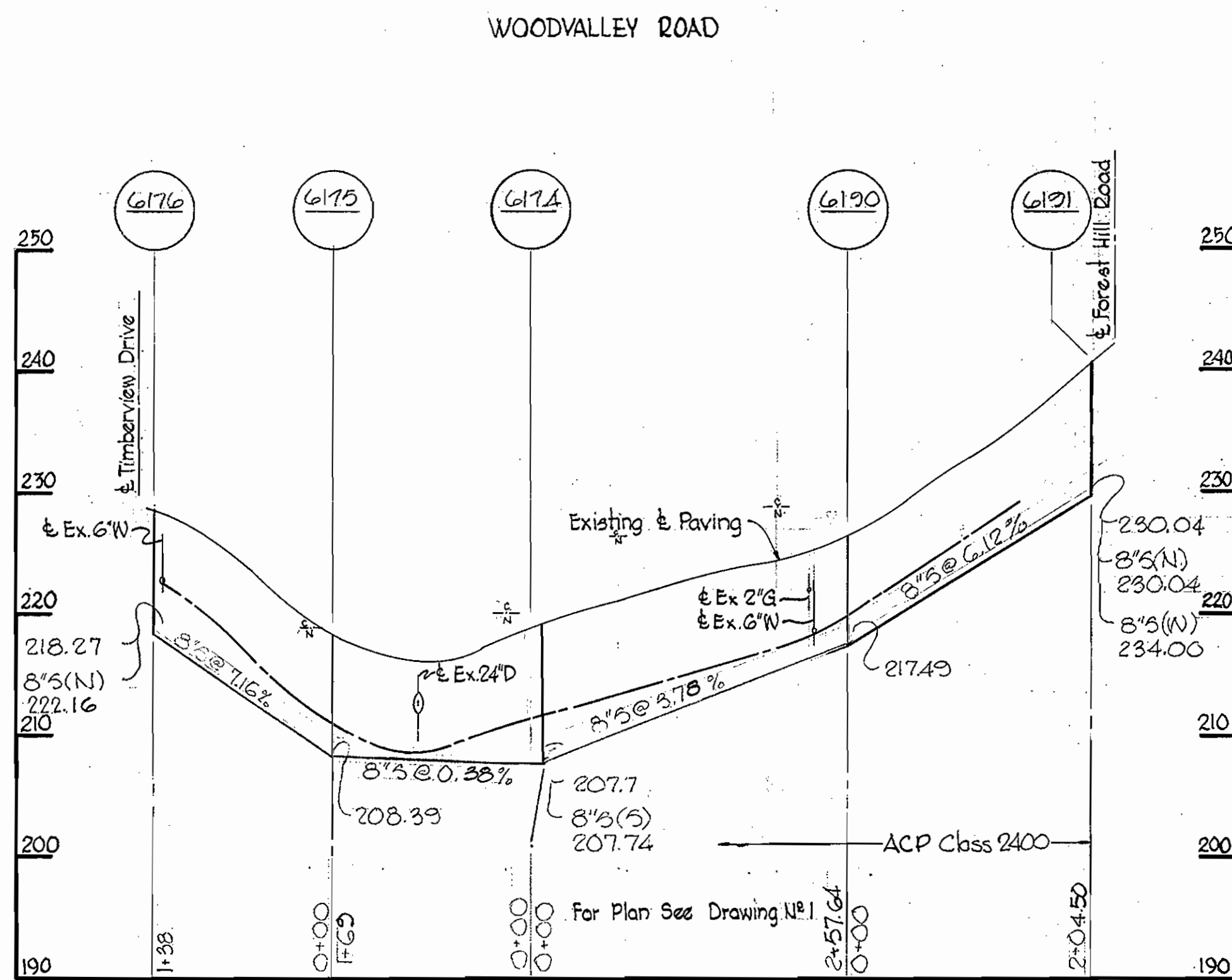
Timberview Contract No. 347-S

| | | | | | | |
|---|--|--------------------|------------------------|------------------------------|---------------|-------------------|
| WHITMAN, REQUARDT & ASSOCIATES ENGINEERS 1304 ST. PAUL ST. BALTIMORE, MARYLAND | DEPARTMENT OF PUBLIC WORKS HOWARD COUNTY, MARYLAND 8-25-70 DATE | CONTRACT NO. 347-S | PLAN OF SEWER MAINS | TIMBERVIEW COLLECTING SEWERS | DRAWING NO. 3 | SCALE 1" = 50' |
| | | | | | OF 6 | |

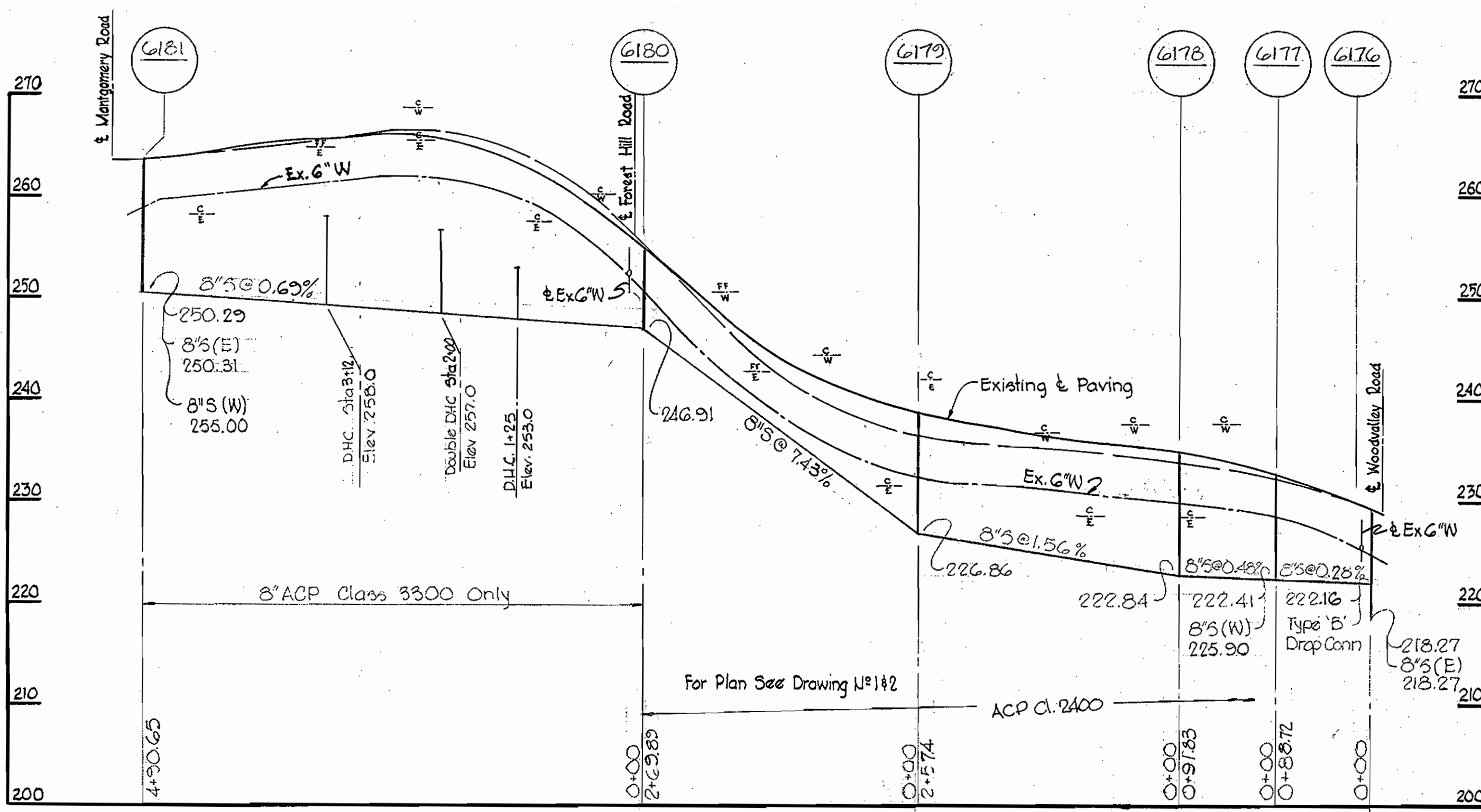
W. O. 6185-2

F.P. # 4605, 2197, 2360

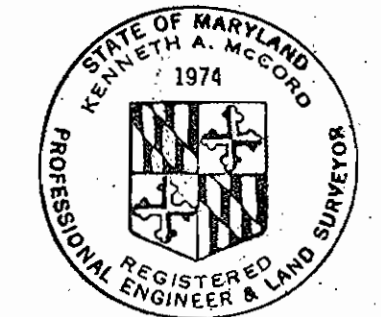
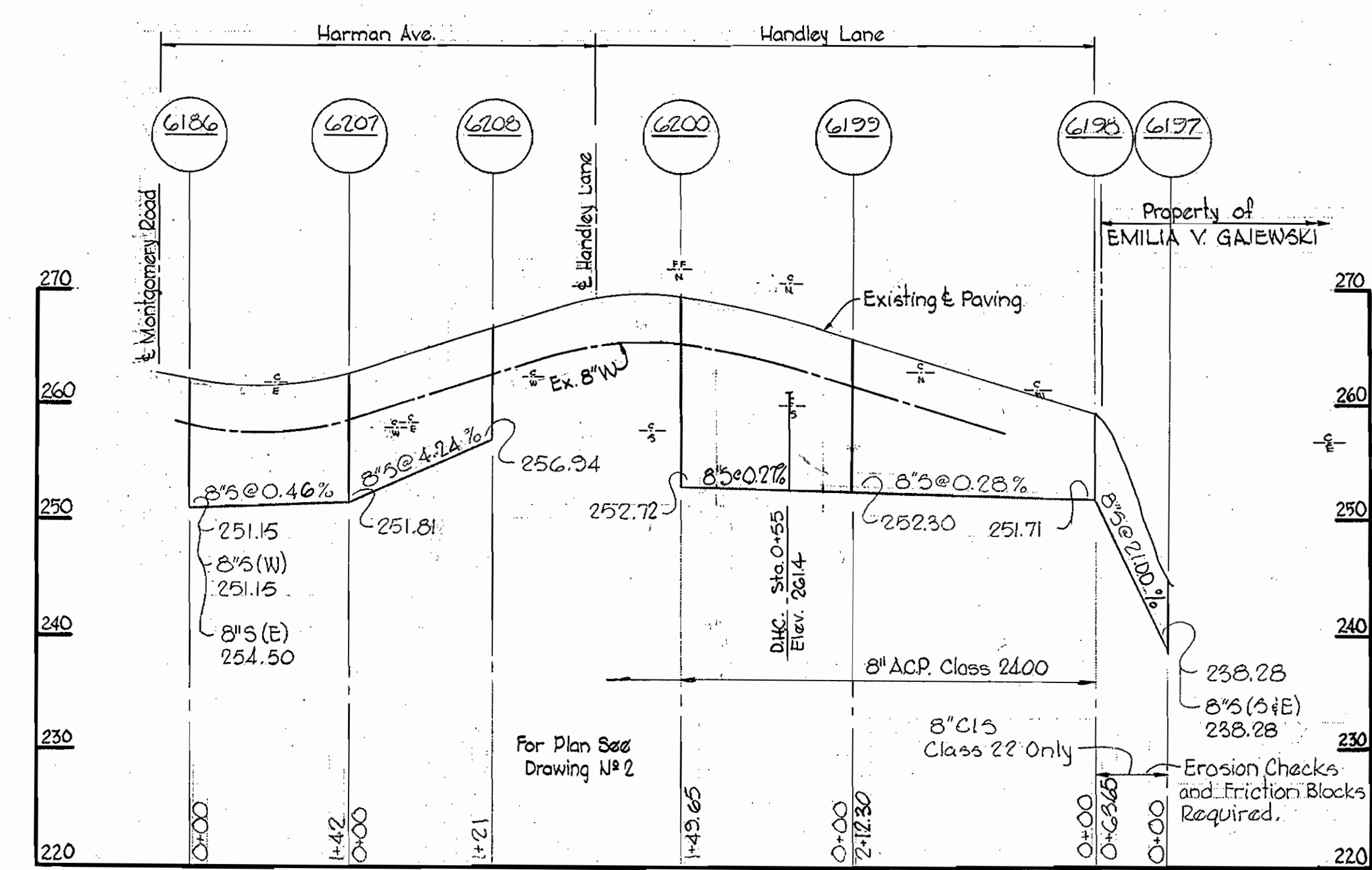
MAR 12 1974



TIMBERVIEW DRIVE



HARMAN AVE. AND HANDLEY LANE



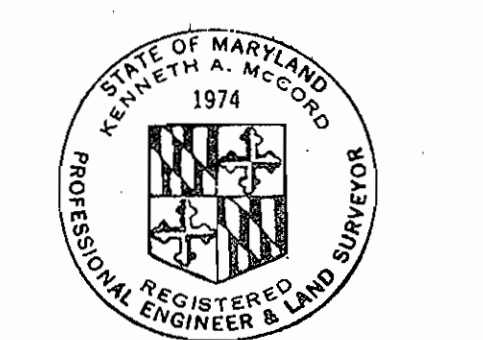
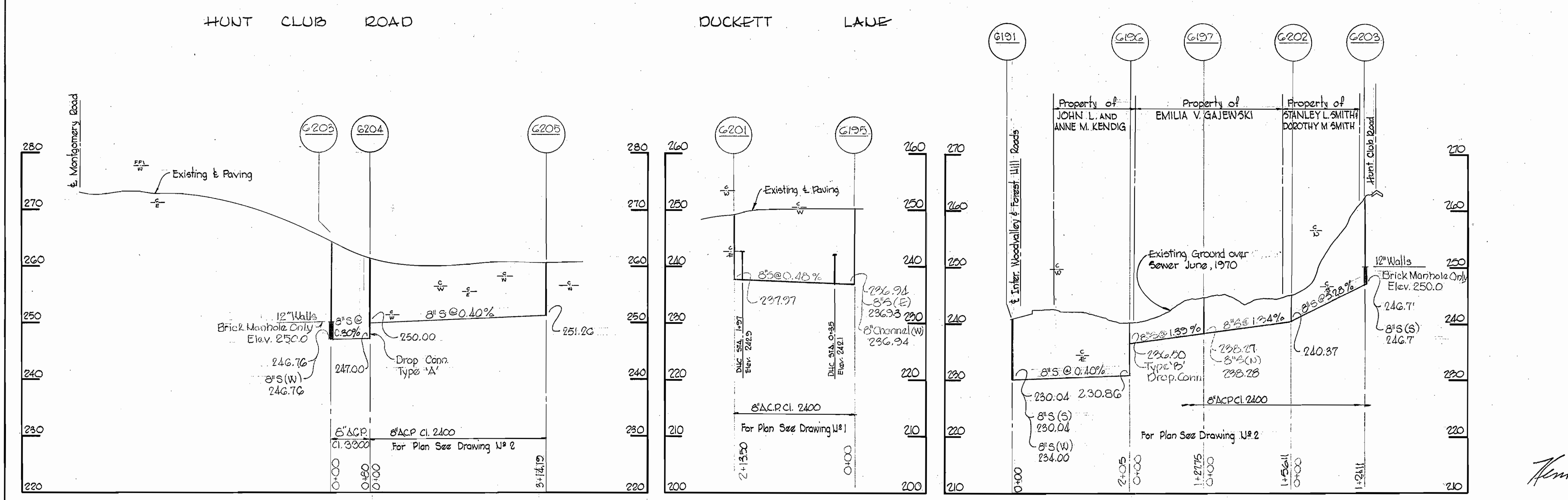
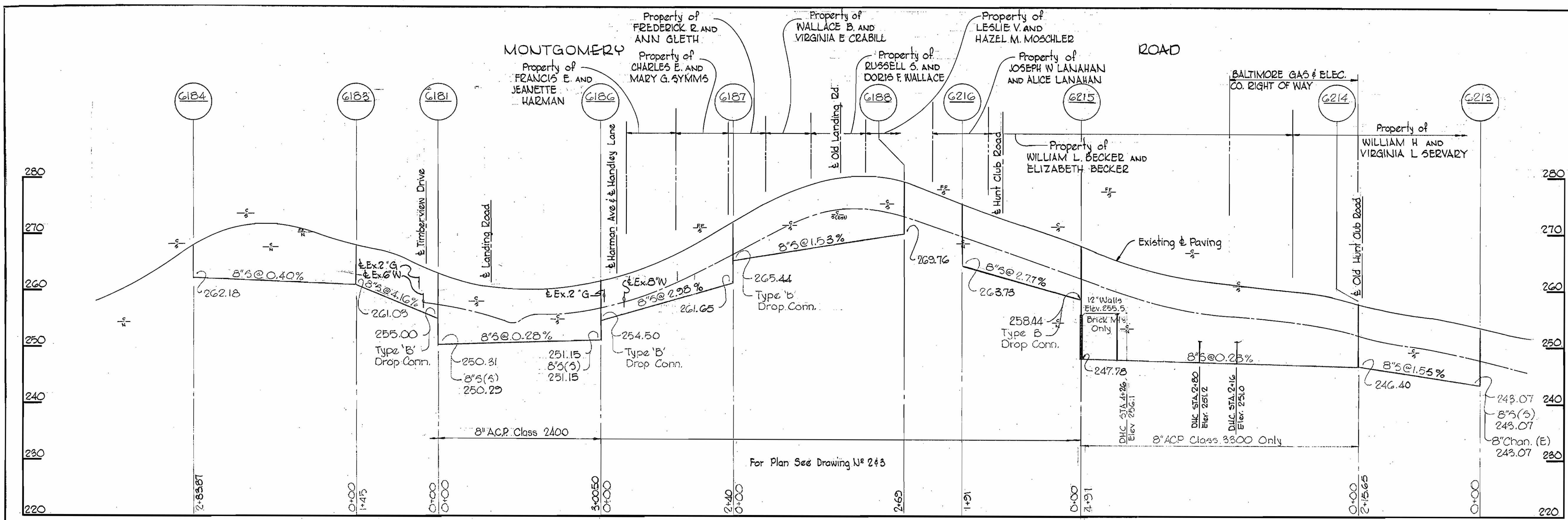
Handwritten signature

| | |
|----------|---|
| 12-16-71 | Extended Sewer Main in Old Hunt Club Road |
| No. Date | Revision |

Timberview Contract No. 347-5

| | | | | | | |
|---|--|--------------------|-------------------------|------------------------------|--------------------|--------------------------|
| WHITMAN, REQUARDT & ASSOCIATES ENGINEERS 1304 ST. PAUL ST. BALTIMORE, MARYLAND | DEPARTMENT OF PUBLIC WORKS HOWARD COUNTY, MARYLAND DATE 8-25-70 <i>Handwritten signature</i> CHIEF-BUREAU OF WATER AND SEWER | CONTRACT NO. 347-S | PROFILES OF SEWER MAINS | TIMBERVIEW COLLECTING SEWERS | DRAWING NO. 4 OF 6 | SCALE H:1"=100' V:1"=10' |
| | | | | | AS BUILT | |

WS 347-5/4



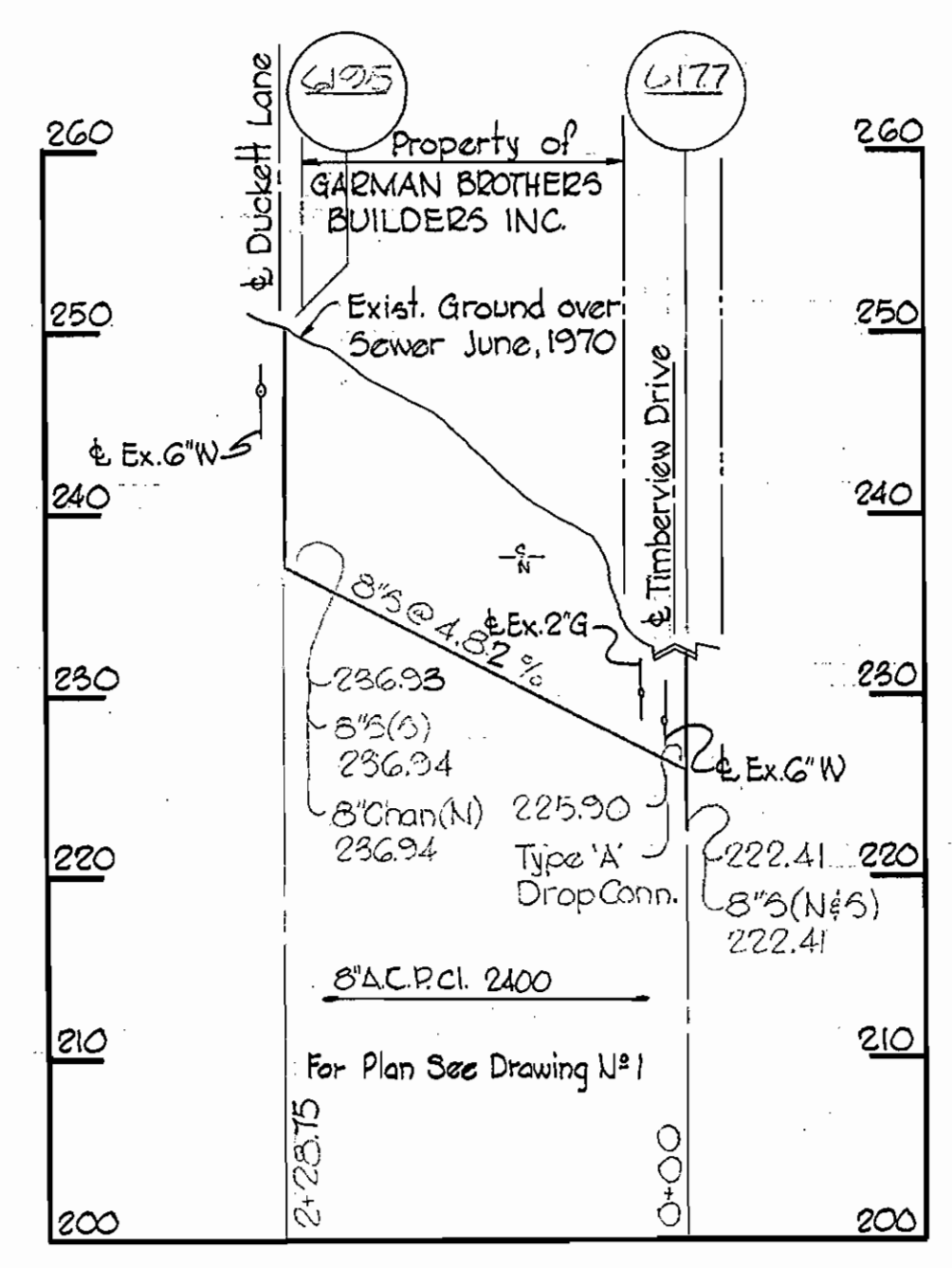
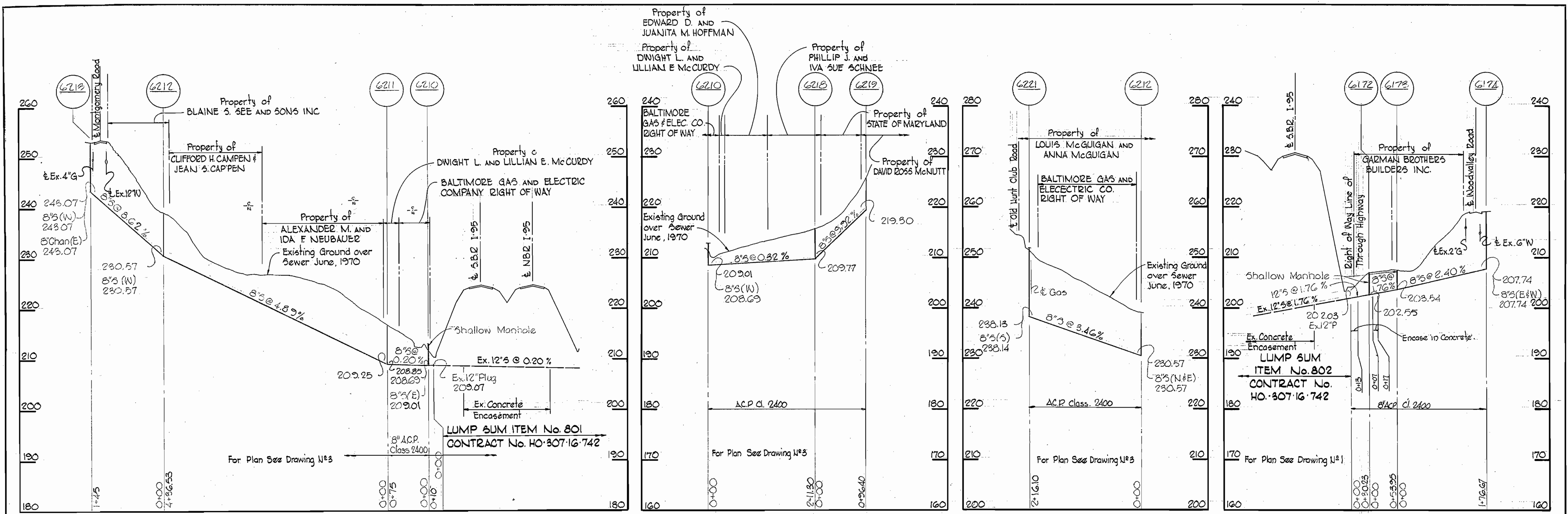
Kenneth A. McCord
Timberview
Contract No. 347-5

| | | | | | |
|---|---|--------------------|----------------------------|------------------------------|--|
| WHITMAN, REQUARDT & ASSOCIATES ENGINEERS 1304 ST. PAUL ST. BALTIMORE, MARYLAND | DEPARTMENT OF PUBLIC WORKS HOWARD COUNTY, MARYLAND 8-25-70 <i>W. O. Fullert</i> CHIEF-BUREAU OF WATER AND SEWER | CONTRACT NO. 347-S | PROFILES OF SEWER MAINS | TIMBERVIEW COLLECTING SEWERS | DRAWING NO. 5 OF 6 SCALE H:1"=100' V:1"=10' |
|---|---|--------------------|----------------------------|------------------------------|--|

W. O. G185-2

BUILT MAR 12 1974

WS 347-S/5



Kenneth A. McCord
 Timberview
 Contract No. 347-5

| | | | | | | | |
|---|--|---|--------------------|----------------------------|------------------------------|---------------|-----------------------------|
| WHITMAN, REQUARDT & ASSOCIATES ENGINEERS 1304 ST. PAUL ST. BALTIMORE, MARYLAND | DEPARTMENT OF PUBLIC WORKS HOWARD COUNTY, MARYLAND 8-25-70 DATE | W O Albert CHIEF-BUREAU OF WATER AND SEWER | CONTRACT NO. 347-S | PROFILES OF SEWER MAINS | TIMBERVIEW COLLECTING SEWERS | DRAWING NO. 6 | SCALE H:1"=100' V:1"=10' |
| | | | | | | OF 6 | AS BUILT |

W. O. 6185-2

WS 347-5/6