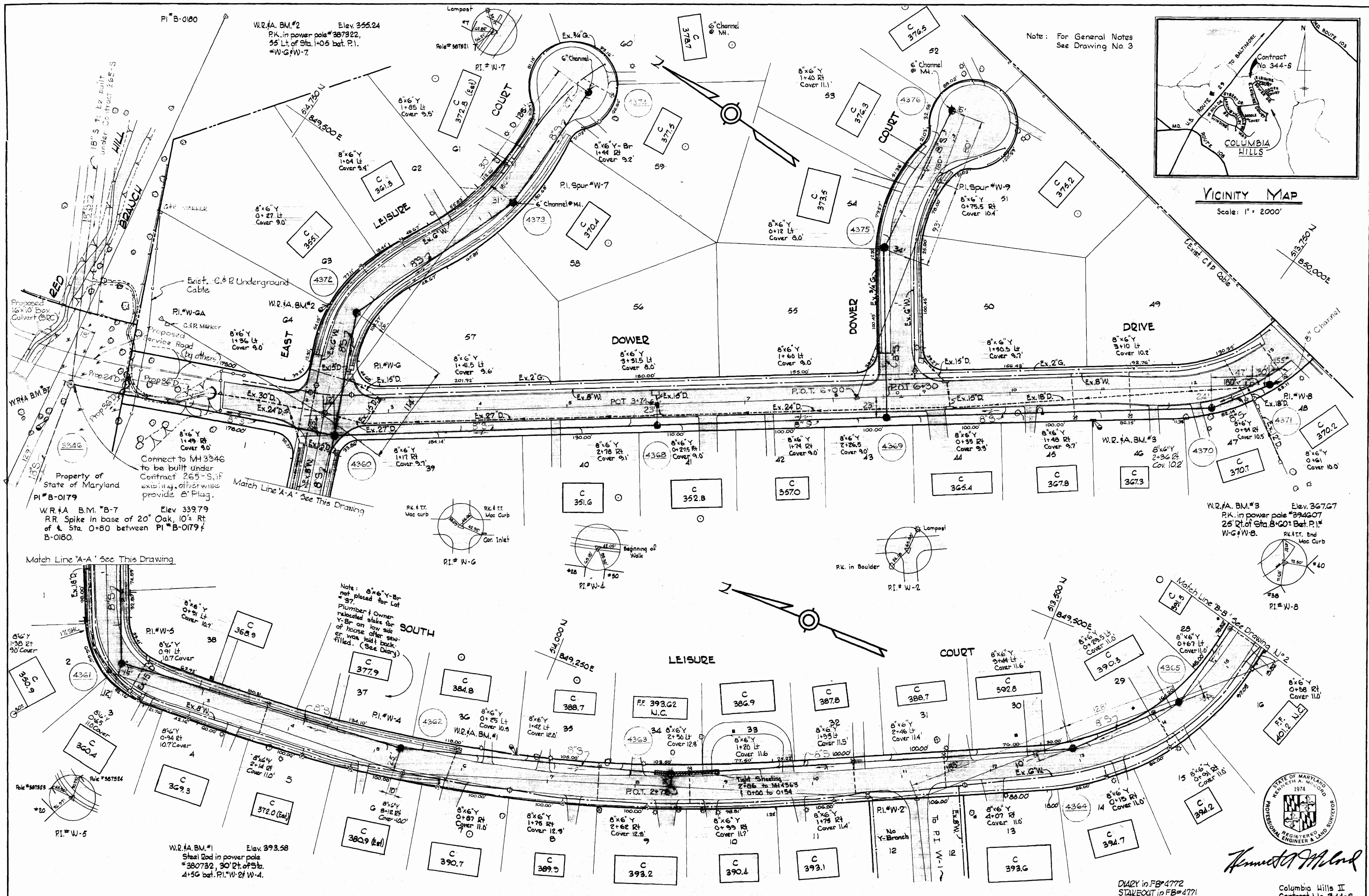


VICINITY MAP  
Scale: 1" = 2000'



WHITMAN, REQUARDT & ASSOCIATES  
ENGINEERS  
1304 ST. PAUL ST.  
BALTIMORE, MARYLAND

HOWARD COUNTY METROPOLITAN COMMISSION  
DATE: 4-15-70  
W. O. GIBBS  
CHIEF ENGINEER

CONTRACT NO. 344-S

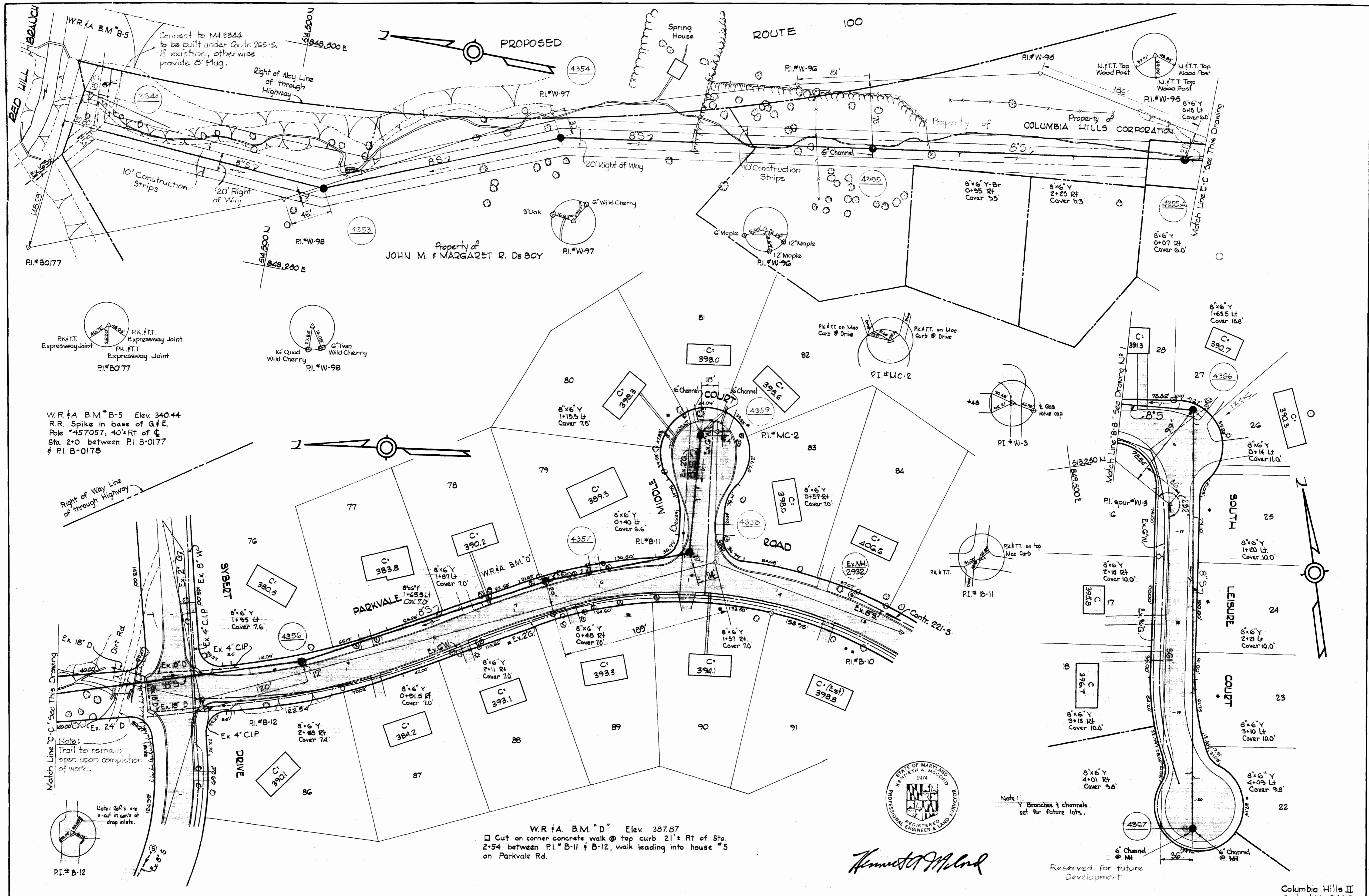
PLAN OF  
SEWER MAINS

ELECTION DISTRICT  
ELlicott CITY No. 2

DRAWING NO. 1 OF 4  
SCALE 1" = 50'

WS 344-5/1

WS 344-S/2



W.R.#A B.M.#B-5 Elev. 340.44  
 R.R. Spike in base of G.F.E.  
 Pole #457057, 40' Rt of C.  
 Sta 2+0 between P.I. B-0177  
 & P.I. B-0178

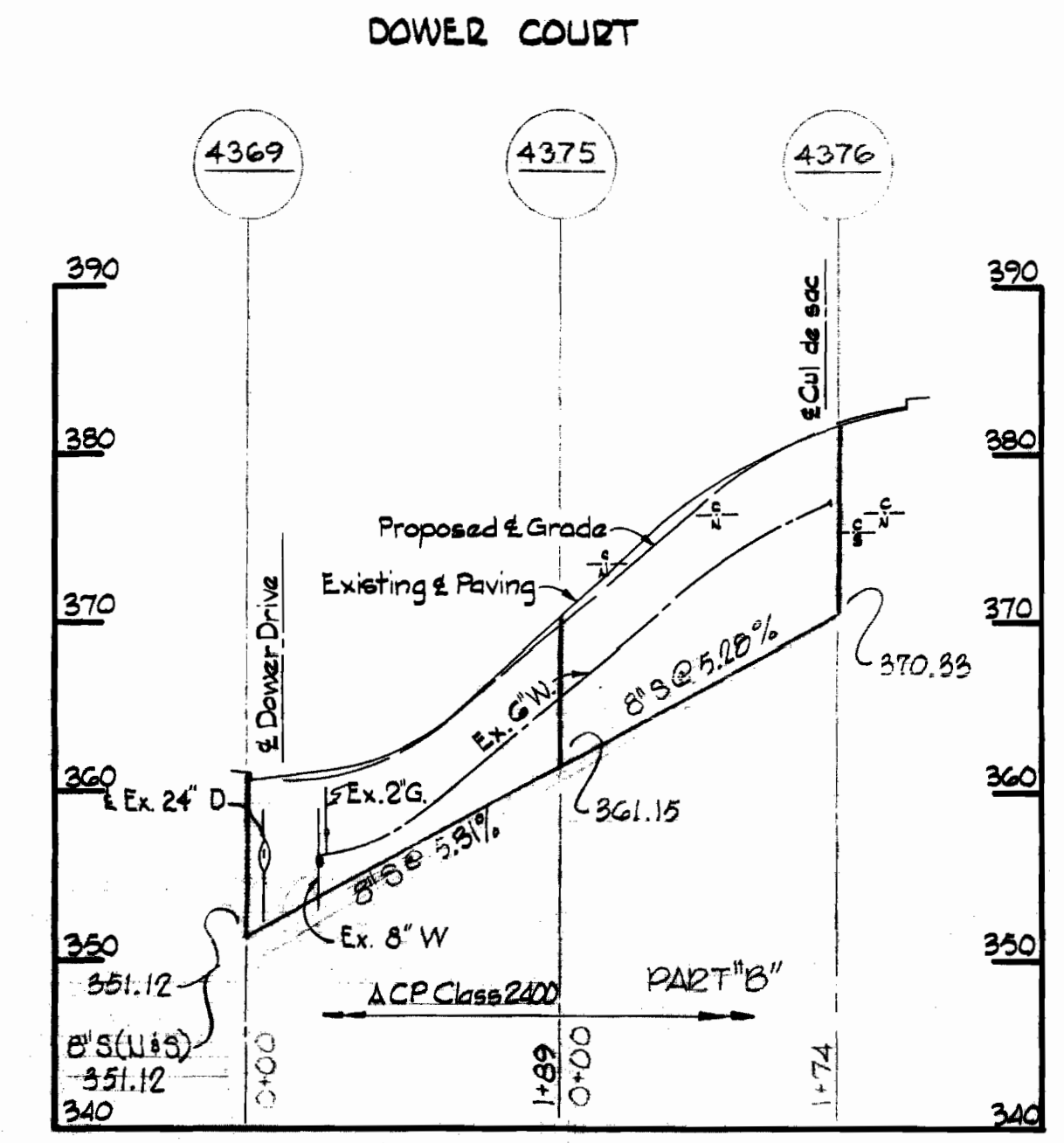
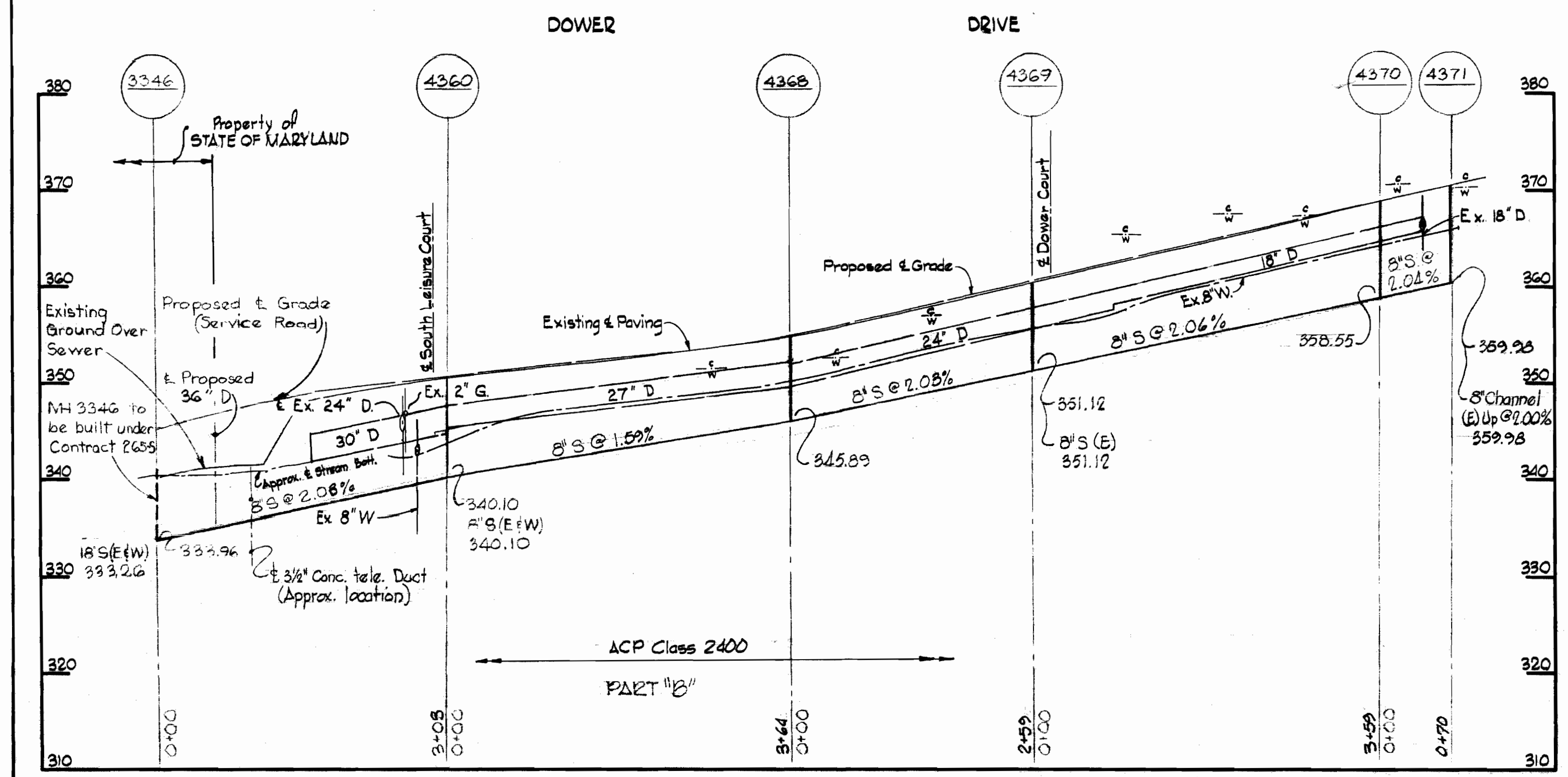
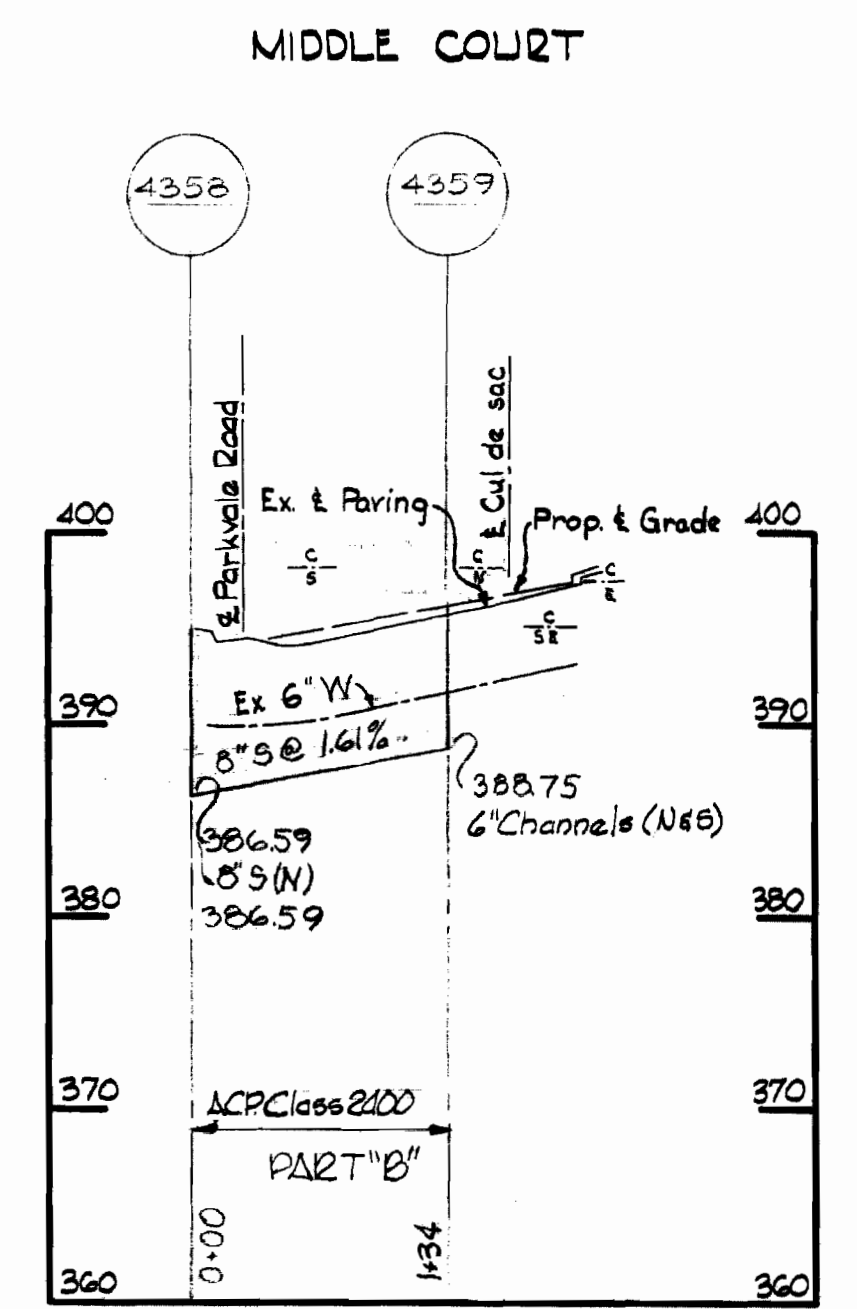
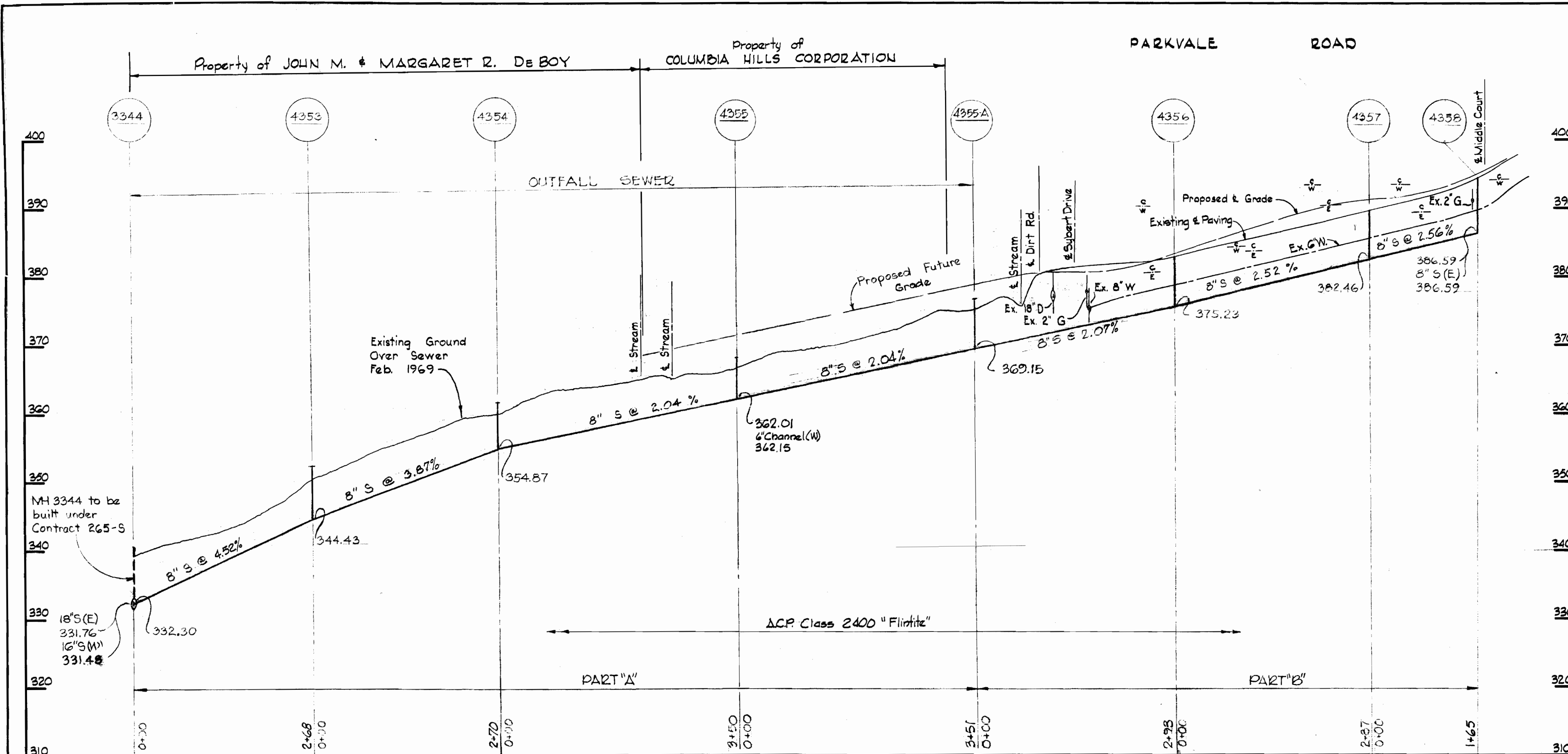
W.R.#A. B.M.#D" Elev. 387.87  
 □ Cut on corner concrete walk @ top curb 21'± Rt. of Sta. 2+54 between P.I.#B-11 & B-12, walk leading into house #5 on Parkvale Rd.

Note:  
 Y Branches & channels  
 set for future lots.

Reserved for future  
 Development

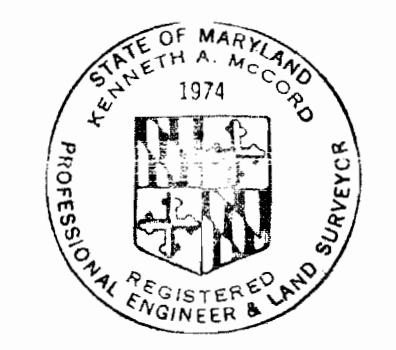
Columbia Hills II  
 Contract No. 344-S

WHITMAN, REQUARDT & ASSOCIATES ENGINEERS 1304 ST. PAUL ST. BALTIMORE, MARYLAND	HOWARD COUNTY METROPOLITAN COMMISSION DATE <u>4-15-70</u> <i>W.O. Gilber</i> CHIEF ENGINEER	CONTRACT NO. <u>344-S</u>	PLAN OF SEWER MAINS	ELECTION DISTRICT ELLICOTT CITY No. 2	DRAWING NO. 2 OF 4 SCALE 1" = 50' <small>913-186 913-495 914-485</small>
---	--	---------------------------	------------------------	--	---



**GENERAL NOTES**

1. Approximate location of existing mains are shown. The Contractor shall take all necessary precautions to protect existing mains and services and maintain uninterrupted supply. Any damage incurred shall be repaired immediately.
2. All pipe elevations shown are invert elevations.
3. The Contractor shall locate existing utilities a minimum of two weeks in advance of construction operations in vicinity of utilities.
4. For all standard details see standards bound in Specifications.
5. The Contractor shall provide a joint in all sewer mains within 2'-0" of exterior manhole walls.
6. All manholes shall be 4'-0" inside diameter.
7. All horizontal and vertical controls are based on Maryland State Datum.
8. Clear all utilities by a minimum of 6', clear all poles by 2'-0" minimum, or tunnel as required.
9. All sewer pipe shall be 4'-0" G.P.P., 6'-0" G.P.P., or ACP Class 2400 unless otherwise noted.
10. Build Manholes 1'-0" above existing ground at outfall sewers.

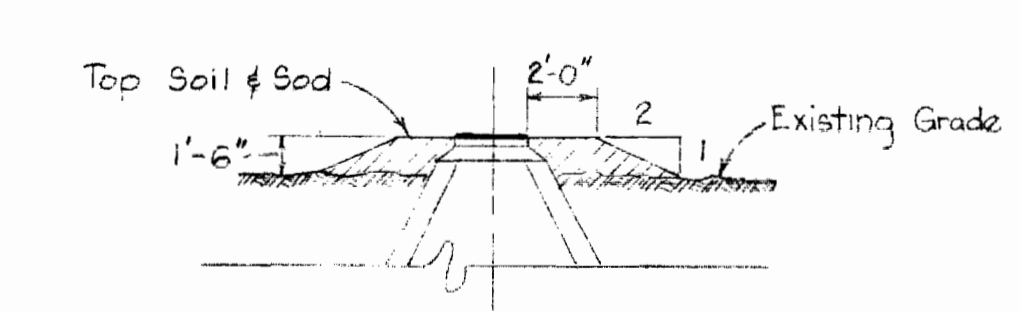
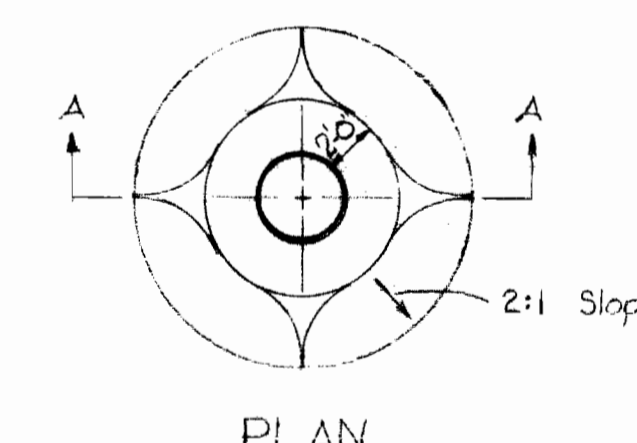
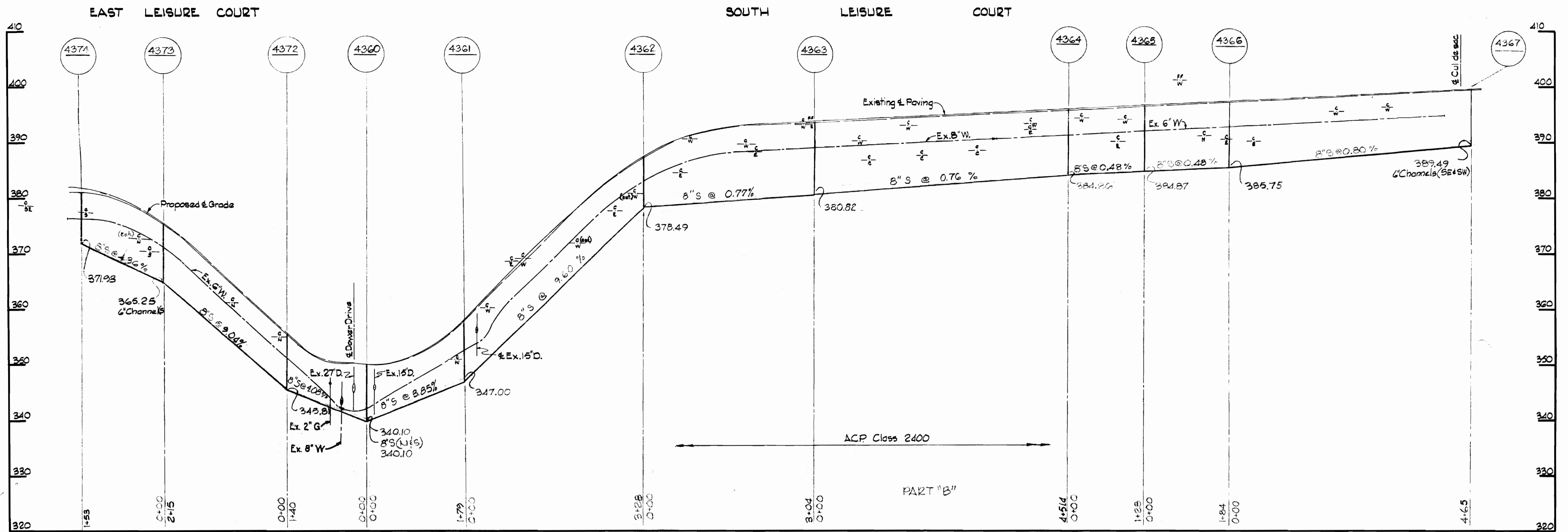


*Kenneth A. McCord*

Columbia Hills-II  
Contract No. 344-S

WHITMAN, REQUARDT & ASSOCIATES ENGINEERS 1304 ST. PAUL ST. BALTIMORE, MARYLAND	HOWARD COUNTY METROPOLITAN COMMISSION DATE 4-15-70 <i>W O Fabus</i> CHIEF ENGINEER	CONTRACT NO. 344-S	PROFILES OF SEWER MAINS	ELECTION DISTRICT ELLICOTT CITY No. 2	DRAWING NO. 3 OF 4 SCALE H:1"=100' V:1"=10'
---	---	--------------------	----------------------------	--	---

WS 344-S/3



Note: Sewer House Connections not included under this Contract, 8" x 6" V-Branches laid under this Contract only



*Kenneth A. McCord*

Columbia Hills II  
Contract No. 344-S

WHITMAN, REQUARDT & ASSOCIATES ENGINEERS 1304 ST. PAUL ST. BALTIMORE, MARYLAND	HOWARD COUNTY METROPOLITAN COMMISSION DATE 4-15-70 <i>W O Palmer</i> CHIEF ENGINEER	CONTRACT NO. 344-S	PROFILES OF SEWER MAINS	ELECTION DISTRICT ELLICOTT CITY No. 2	DRAWING NO. 4 OF 4 SCALE H:1"=100' V:1"=10'
---	--	--------------------	----------------------------	--	--