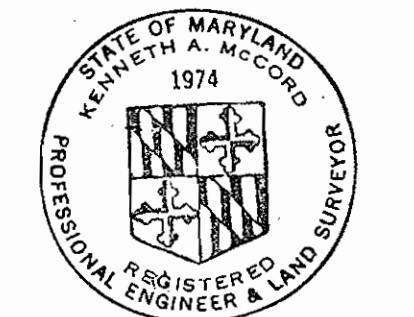


QUANTITIES	
3" Water	1,720'
6" Water	2,500'
8" Water	6,180'
8" Sewer	10,170'
6" Force Main	1,130'
Fire Hydrants	12

CONTRACT NO C-343 W-S
WATER AND SEWER EXTENSIONS
HOWARD COUNTY MARYLAND
DEPARTMENT OF PUBLIC WORKS



Kenneth A. McLeod

Stakeout in FB# 4870
Diary in FB# 4965

Village of Longreach, Section I-A
Phelps Luck
Contract No. C-343 W-S

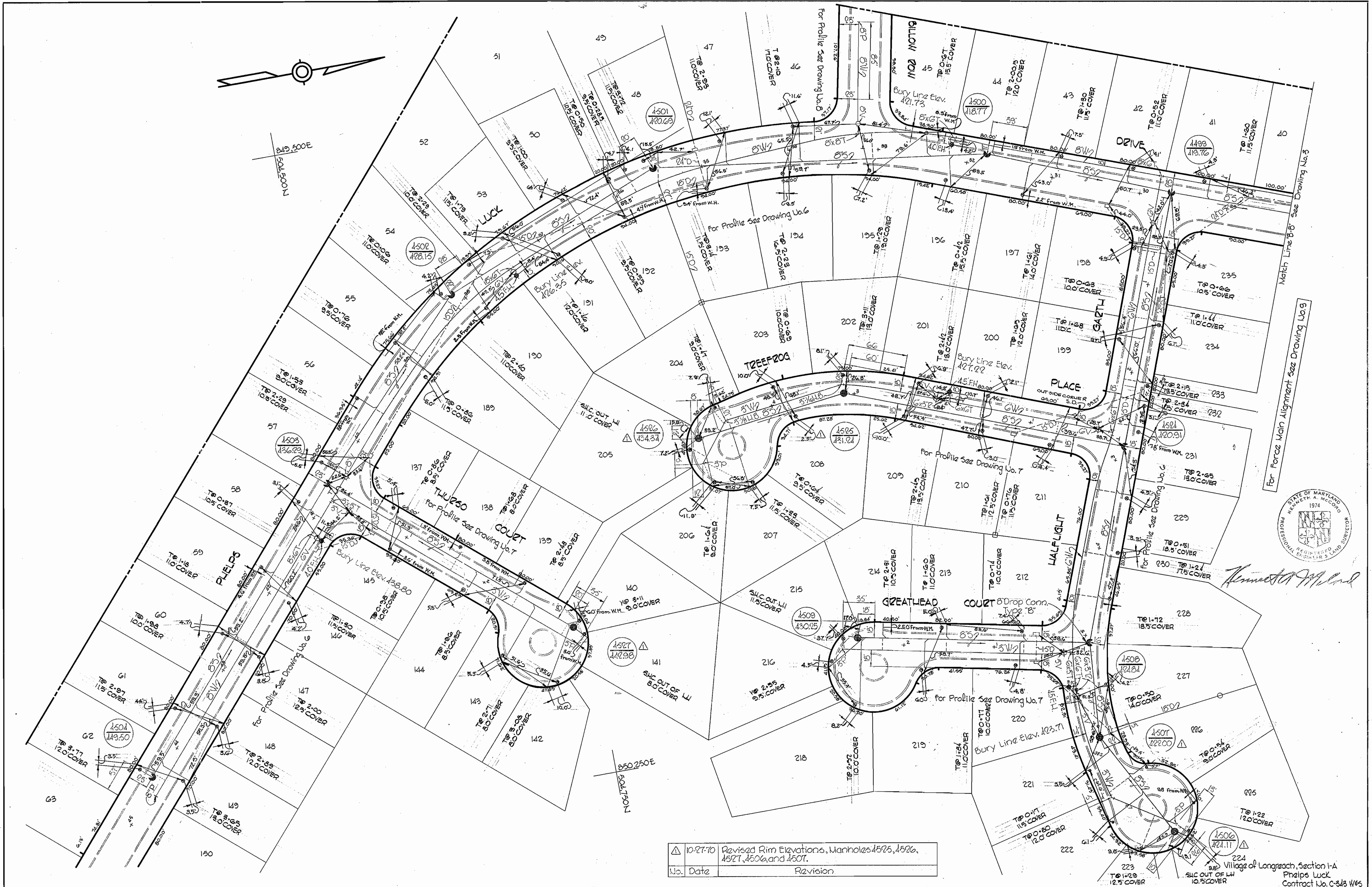
WHITMAN, REQUARDT & ASSOCIATES ENGINEERS 1304 ST. PAUL ST. BALTIMORE, MARYLAND	DEPARTMENT OF PUBLIC WORKS HOWARD COUNTY, MARYLAND DATE 5-26-70 <i>W. O. Libbert</i> CHIEF - BUREAU OF WATER AND SEWER	CONTRACT NO. C-343 W-S	LOCATION	MAP	COLUMBIA VILLAGE OF LONGREACH ELECTION DISTRICT GUILFORD No. 6	DRAWING NO. 1 OF 9	SCALE AS SHOWN
---	---	-------------------------------	----------	-----	--	--	----------------------

W. O. 6023-2

September 7, 1971 AS BUILT

WS 343 W-S/1

WS 343 W-S/2



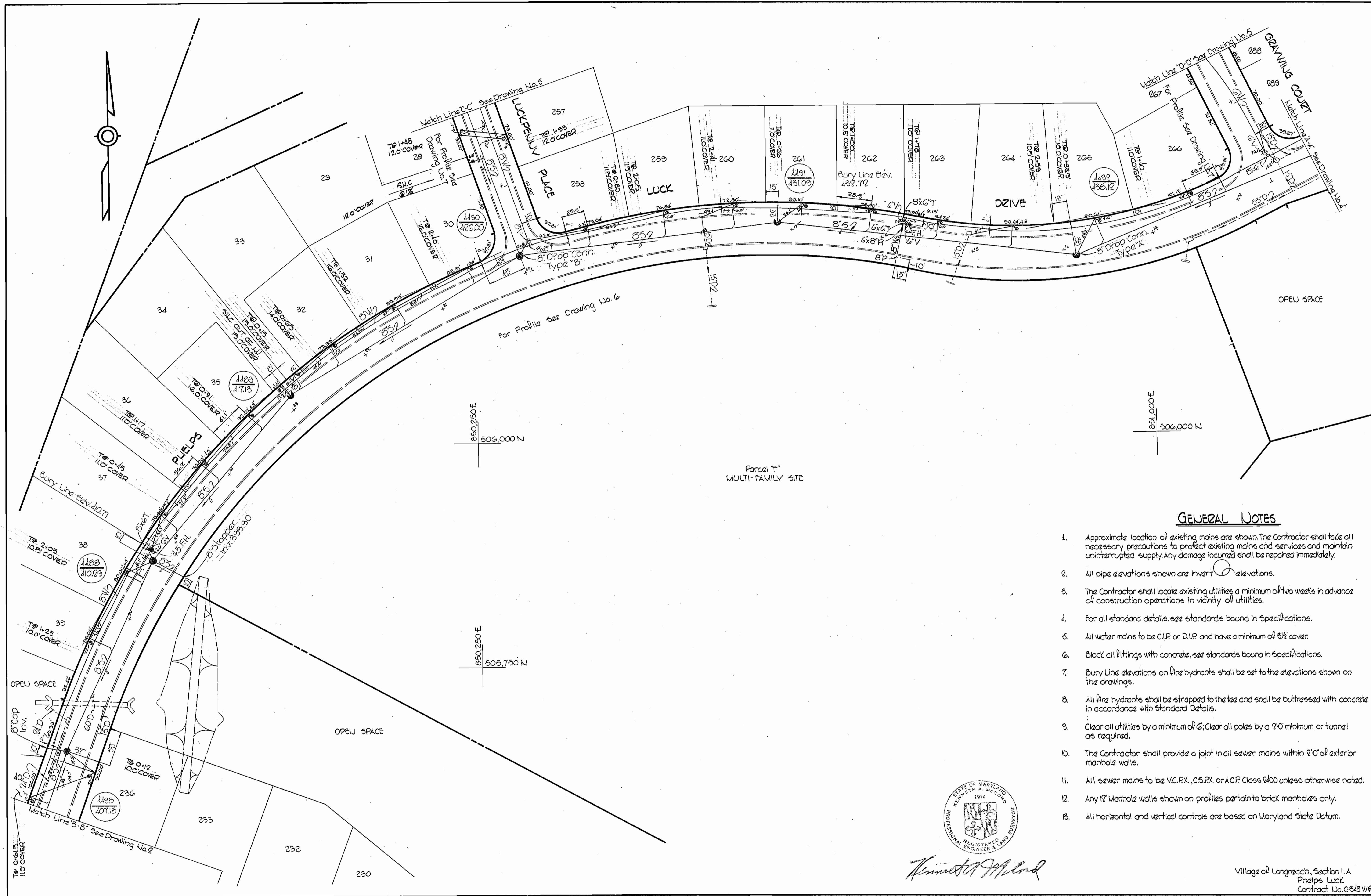
Kenneth A. McCord

△ 10-27-70	Revised Rim Elevations, Manholes 4525, 4526, 4527, 4528, and 4507.
No. Date	Revision

WHITMAN, REQUARDT & ASSOCIATES ENGINEERS 1304 ST. PAUL ST. BALTIMORE, MARYLAND	DEPARTMENT OF PUBLIC WORKS HOWARD COUNTY, MARYLAND 5-26-70 <i>W. O. Gores</i> CHIEF-BUREAU OF WATER AND SEWER	CONTRACT NO. 343W8S	PLAN OF WATER & SEWER MAINS	COLUMBIA VILLAGE OF LONGREACH ELECTION DISTRICT GUILFORD NO. 6	DRAWING NO. 2 OF 9	SCALE 1" = 50'

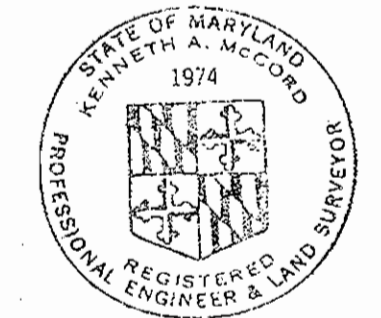
W. O. GORES

WS 343-W-5/3



GENERAL NOTES

1. Approximate location of existing mains are shown. The Contractor shall take all necessary precautions to protect existing mains and services and maintain uninterrupted supply. Any damage incurred shall be repaired immediately.
2. All pipe elevations shown are invert elevations.
3. The Contractor shall locate existing utilities a minimum of two weeks in advance of construction operations in vicinity of utilities.
4. For all standard details, see standards bound in Specifications.
5. All water mains to be C.I.P. or D.I.P. and have a minimum of 3 1/2' cover.
6. Block all fittings with concrete, see standards bound in Specifications.
7. Bury Line elevations on fire hydrants shall be set to the elevations shown on the drawings.
8. All fire hydrants shall be strapped to the tee and shall be buttressed with concrete in accordance with standard Details.
9. Clear all utilities by a minimum of 6'; Clear all poles by a 2'-0" minimum or tunnel as required.
10. The Contractor shall provide a joint in all sewer mains within 8'-0" of exterior manhole walls.
11. All sewer mains to be V.C.P., C.S.P. or A.C.P. Class 2400 unless otherwise noted.
12. Any 12" Manhole walls shown on profiles pertain to brick manholes only.
13. All horizontal and vertical controls are based on Maryland State Datum.



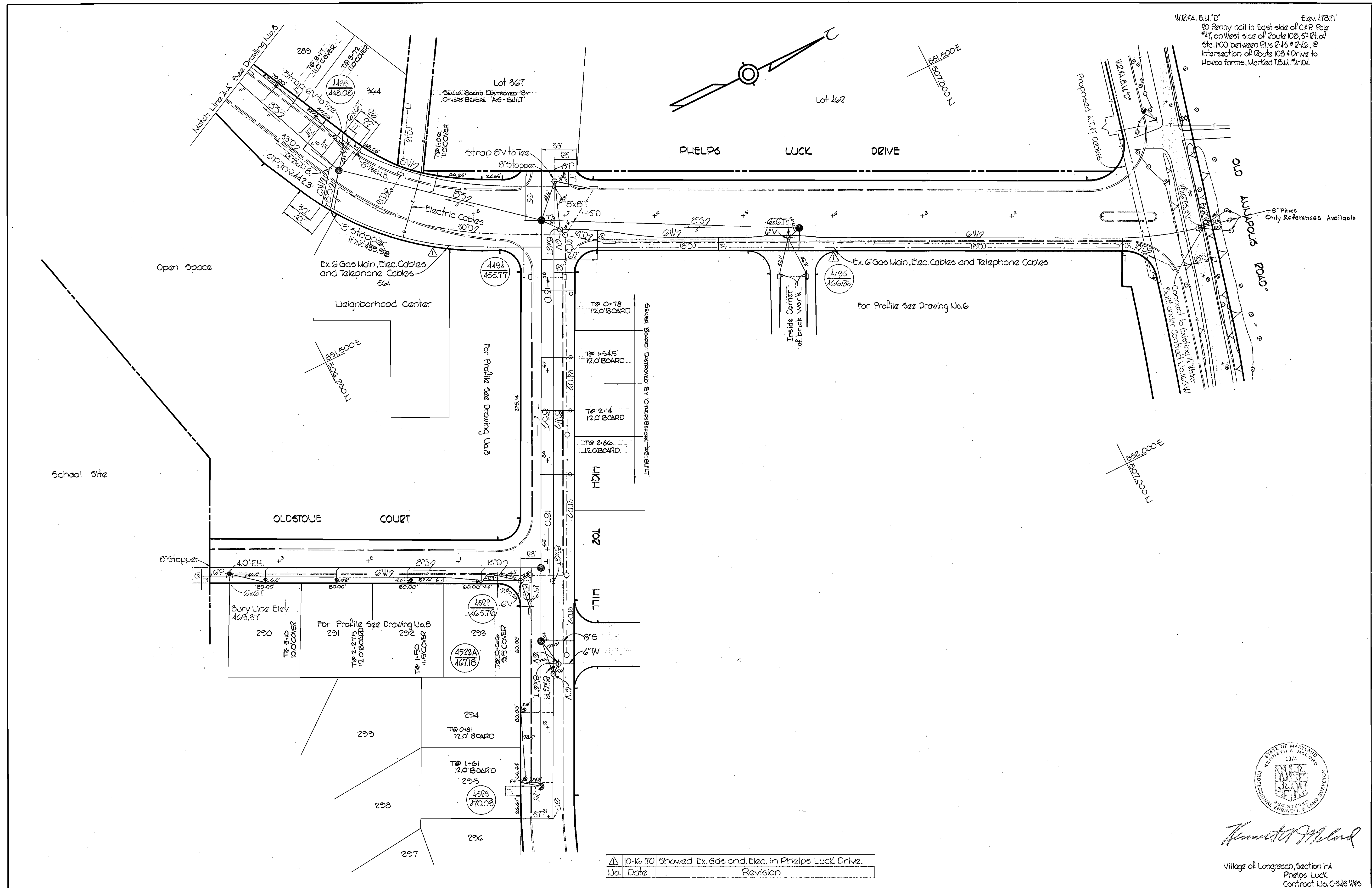
Kenneth A. McLeod

Village of Longreach, Section I-A
Pielps Luck
Contract No. C-343 W-5

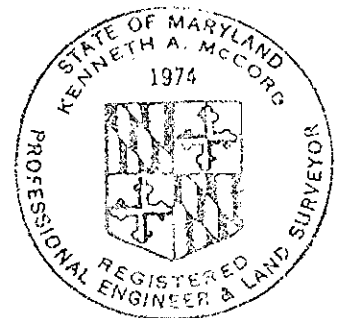
WHITMAN, REQUARDT & ASSOCIATES ENGINEERS 1304 ST. PAUL ST. BALTIMORE, MARYLAND	DEPARTMENT OF PUBLIC WORKS HOWARD COUNTY, MARYLAND DATE: 5-26-72 <i>W. O. Felbert</i> CHIEF-BUREAU OF WATER AND SEWER	CONTRACT NO. C-343 W-5	PLAN OF WATER & SEWER MAINS	COLUMBIA VILLAGE OF LONGREACH ELECTION DISTRICT GUILFORD NO. 6	DRAWING NO. 3 OF 9	SCALE 1" = 50'
					September 1, 1972	AS BUILT

W. O. 6023-2

WS 343 W-5/4



No.	Date	Revision
10-16-70		Showed Ex. Gas and Elec. in Phelps Luck Drive.



Kenneth A. McLeod

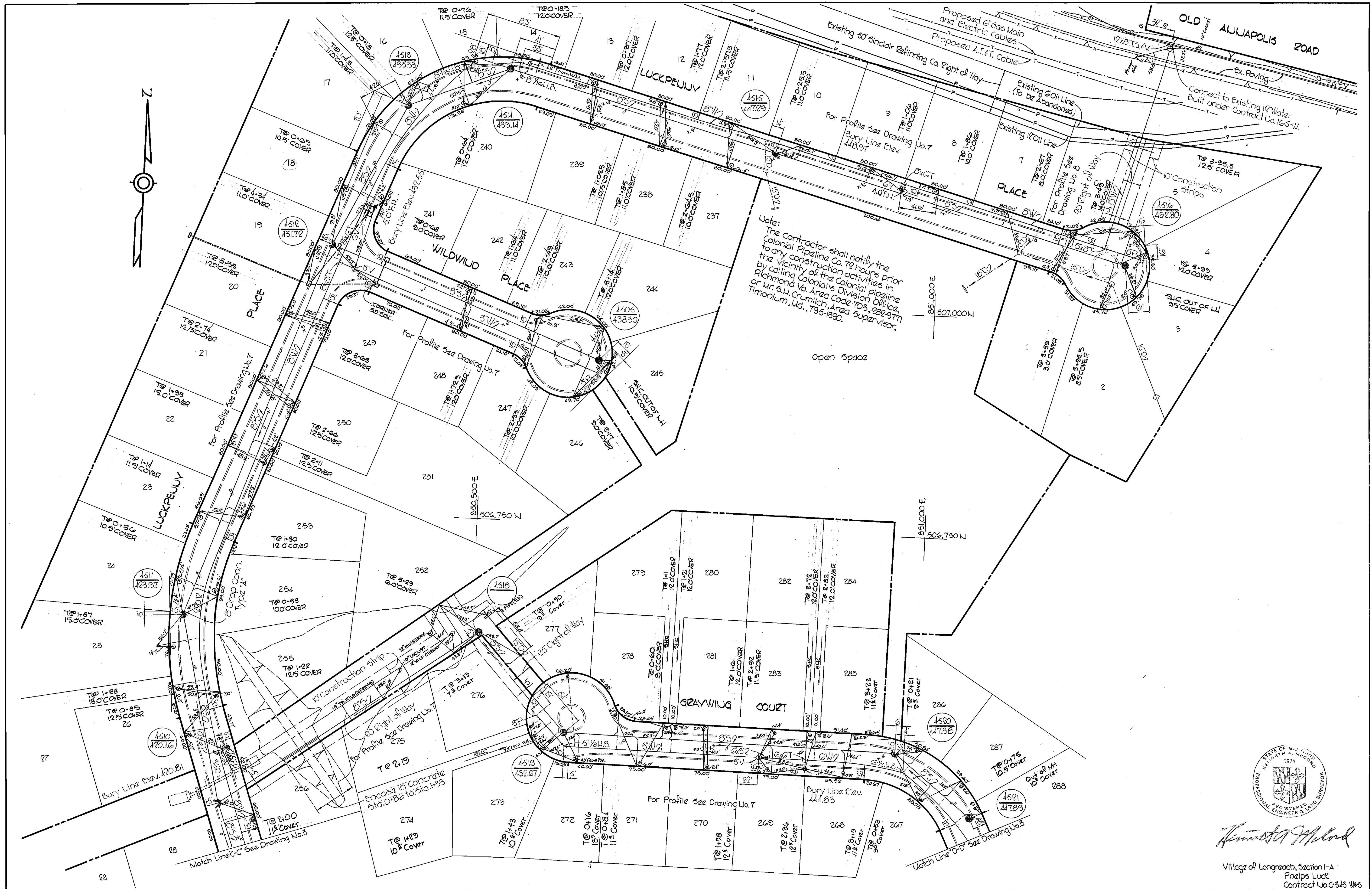
Village of Longreach, Section 1-A
Phelps Luck
Contract No. C-343 W65

WHITMAN, REQUARDT & ASSOCIATES ENGINEERS 1304 ST. PAUL ST. BALTIMORE, MARYLAND	DEPARTMENT OF PUBLIC WORKS HOWARD COUNTY, MARYLAND 5-26-70 <i>W. O. Gilbert</i> CHIEF-BUREAU OF WATER AND SEWER	CONTRACT NO. C-343 W65	PLAN OF WATER & SEWER MAINS	COLUMBIA VILLAGE OF LONGREACH ELECTION DISTRICT GUILFORD NO. 6	DRAWING NO. 4 OF 9 SCALE 1" = 50'
--	--	-------------------------------	---------------------------------------	---	--

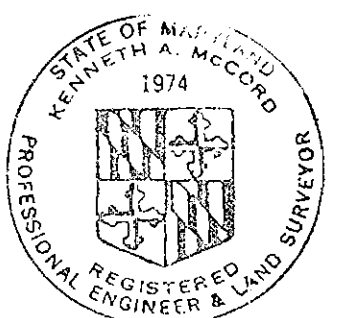
W. O. 6023-2

September 7, 1971

WS 343 W-5/5



Note:
 The Contractor shall notify the Colonial Pipeline Co. 72 hours prior to any construction activities in the vicinity of the Colonial Pipeline in Richmond Va. Area Code 703, 282-9771 or Mr. S.L. Crumlich, Area Supervisor, Timonium, Md., 795-1930.



Kenneth A. McLeod
 Registered Engineer & Land Surveyor

Village of Longreach, Section I-A
 Phelps Luck
 Contract No. C-343 W-5

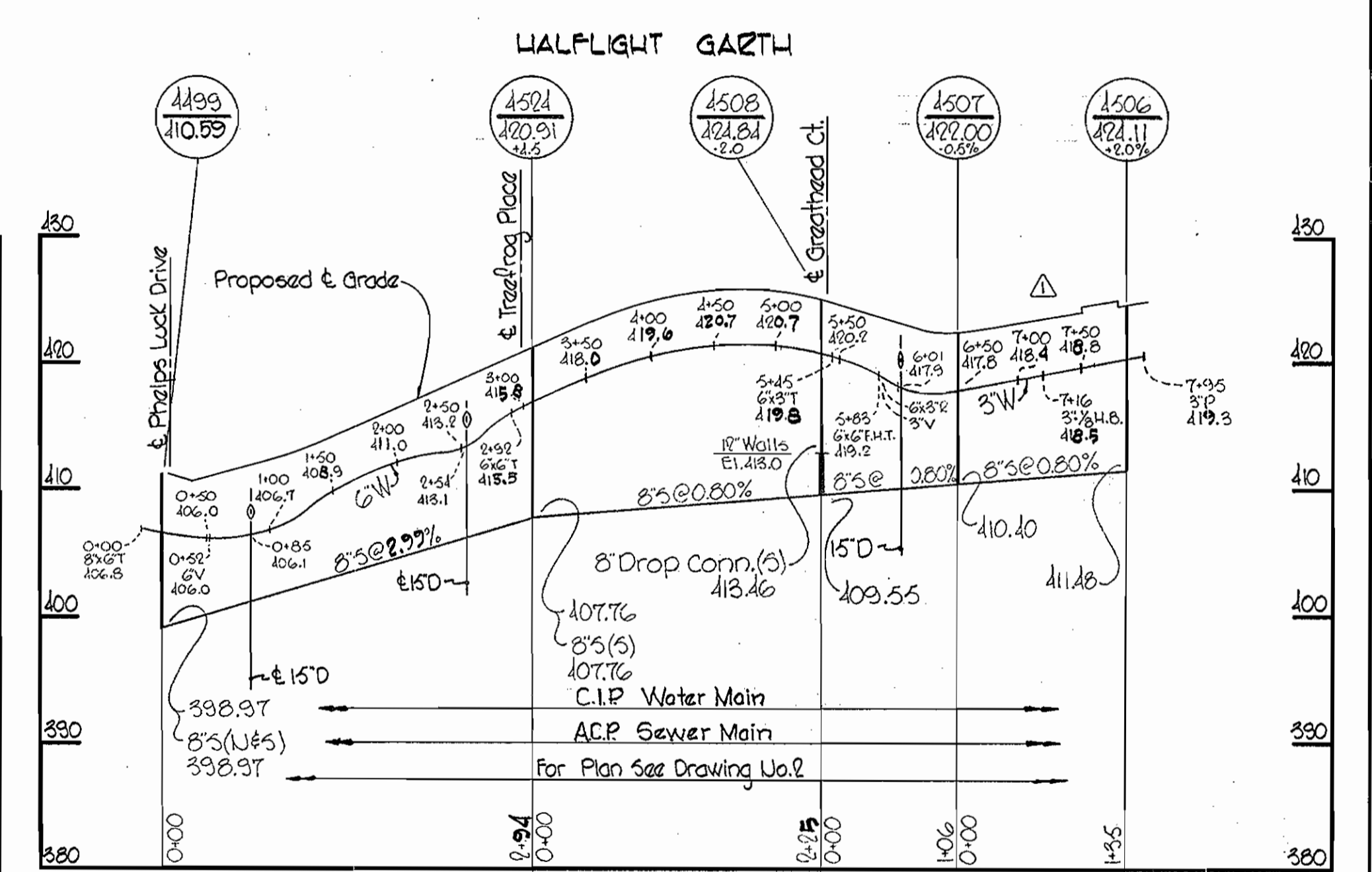
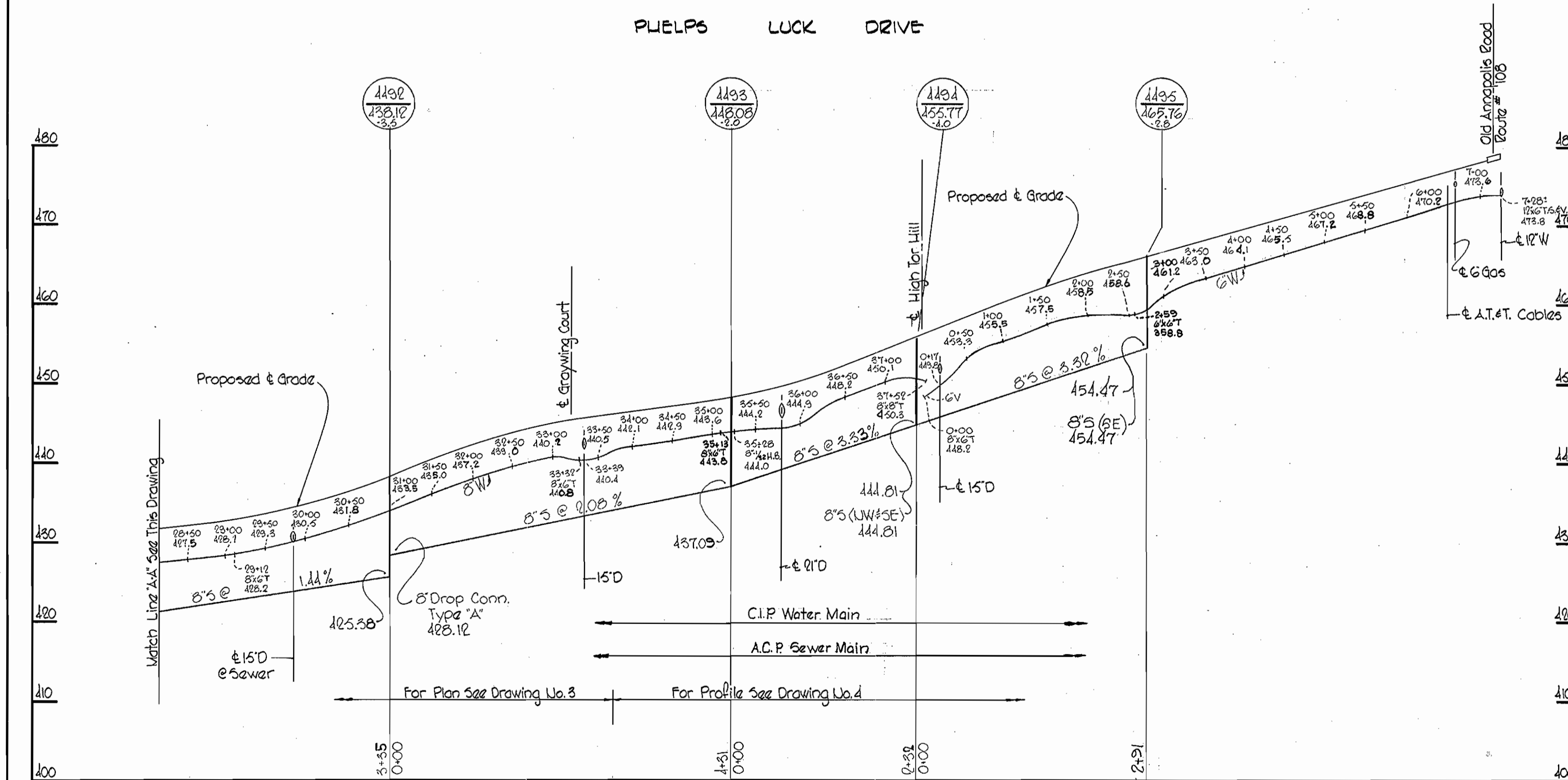
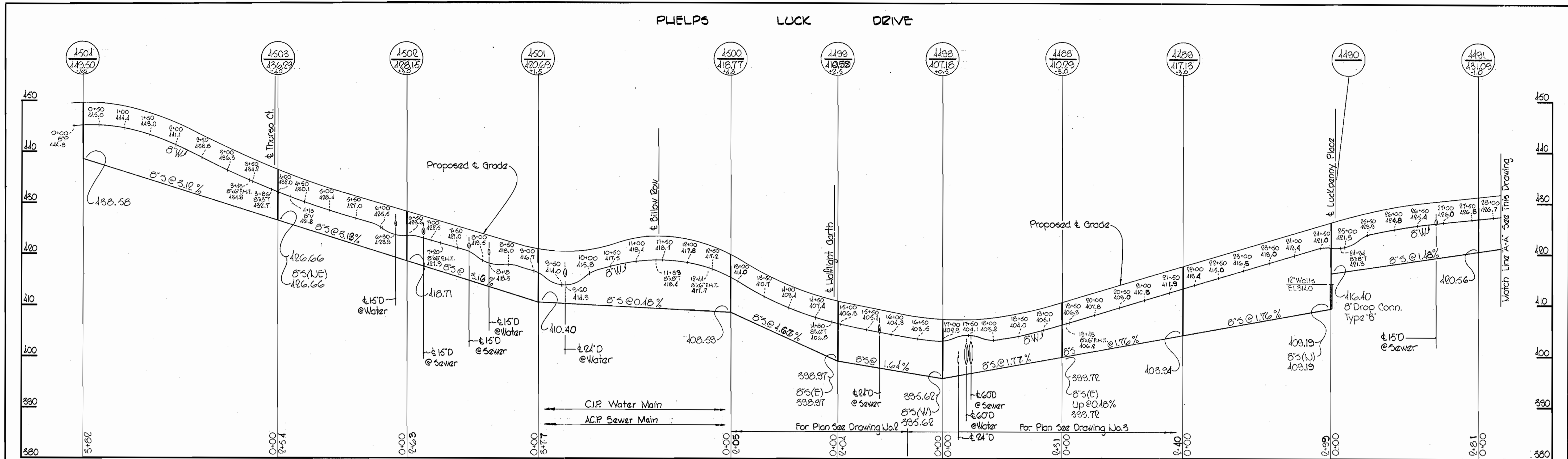
WHITMAN, REQUARDT & ASSOCIATES ENGINEERS 1304 ST. PAUL ST. BALTIMORE, MARYLAND	DEPARTMENT OF PUBLIC WORKS HOWARD COUNTY, MARYLAND S-26-70 <i>W. O. Folbert</i> CHIEF-BUREAU OF WATER AND SEWER	CONTRACT NO. C-343 W-5	PLAN OF WATER & SEWER MAINS	COLUMBIA VILLAGE OF LONGREACH ELECTION DISTRICT GUILFORD NO. 6	DRAWING NO. 5 OF 9	SCALE 1" = 50'
---	---	------------------------	--------------------------------	--	--------------------------	-------------------

W. O. 6023-2

September 7, 1971

AS BUILT

MS 343 W-5/6



△	10-27-70	Revised Rim Elev. Manholes 1506 & 1507 and 3" Water in Halflight Garth.
No.	Date	Revision

Kenneth A. McCord

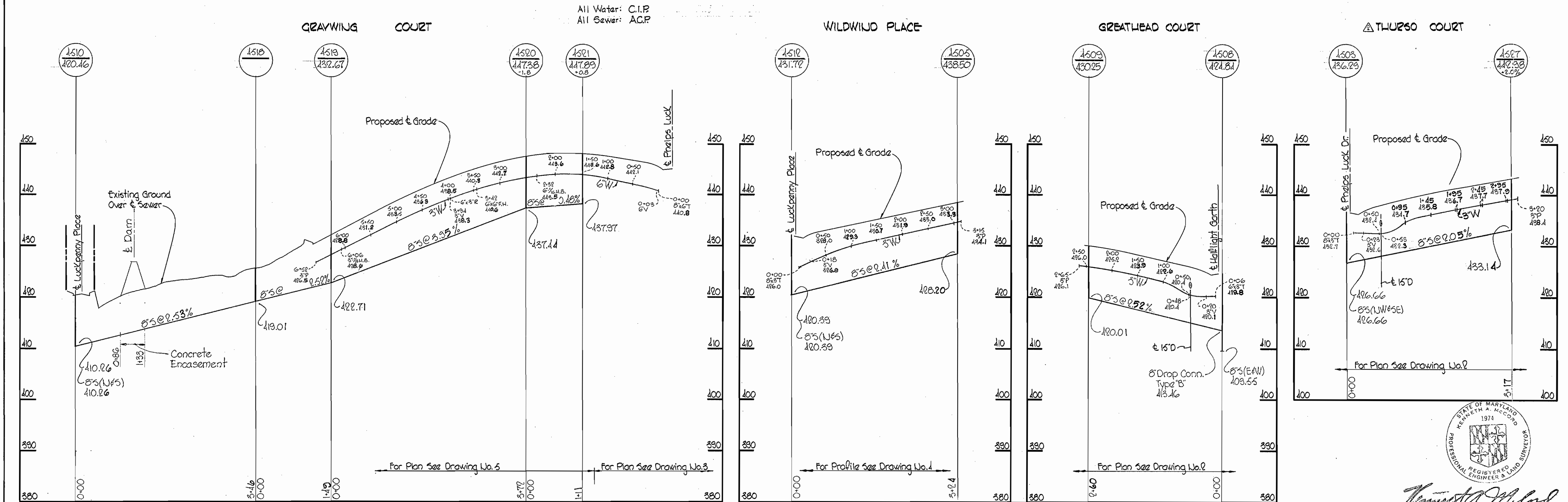
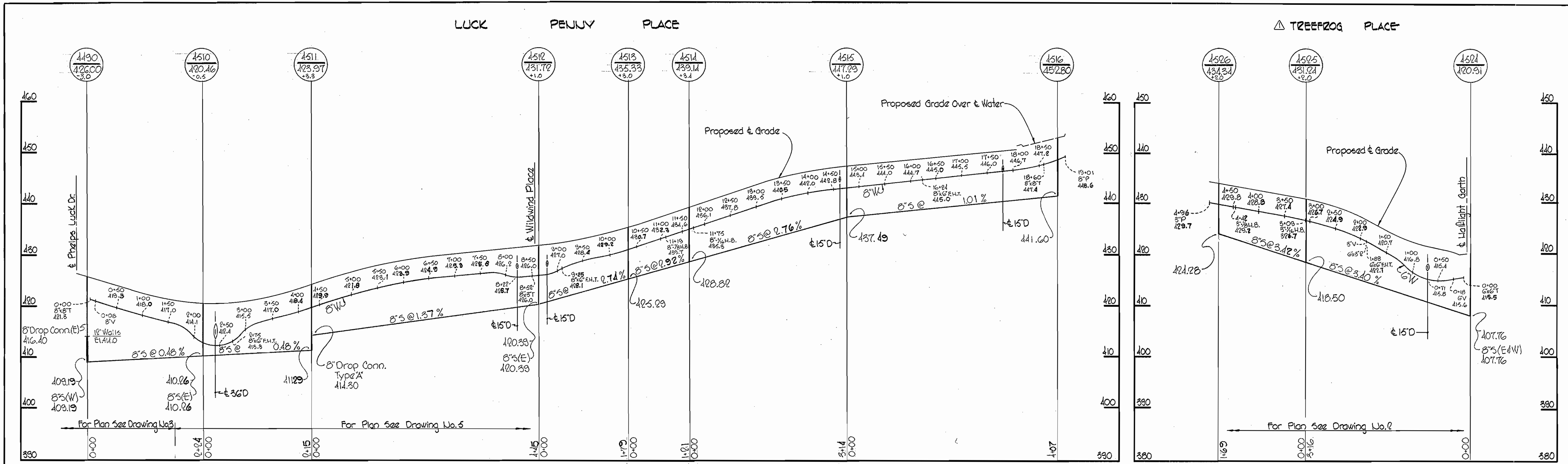
Village of Longreach, Section 1-A
 Phelps Luck
 Contract No. C-343 W-5

WHITMAN, REQUARDT & ASSOCIATES ENGINEERS 1304 ST. PAUL ST. BALTIMORE, MARYLAND	DEPARTMENT OF PUBLIC WORKS HOWARD COUNTY, MARYLAND 5-26-70 DATE	CONTRACT NO. C-343 W-5 W. O. Pullard CHIEF-BUREAU OF WATER AND SEWER	PROFILES OF WATER & SEWER MAINS	COLUMBIA VILLAGE OF LONGREACH ELECTION DISTRICT GUILFORD NO. 6	DRAWING NO. 6 OF 9	SCALE H: 1"=100' V: 1"=10'
---	--	--	------------------------------------	--	--------------------------	----------------------------------

W. O. 6023-2

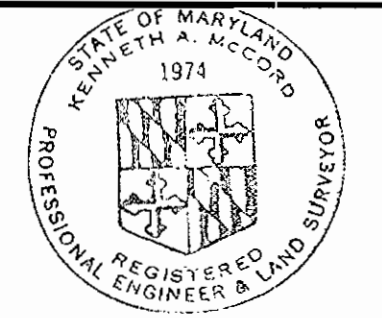
September 7, 1971

WS 343-W/S/7



All Water: C.I.P.
All Sewer: A.C.P.

10-27-70	Revised Water and Sewer Profile, Thurso Court.
10-27-70	Revised Water and Sewer Profile, Treefrog Place.
No. Date	Revision



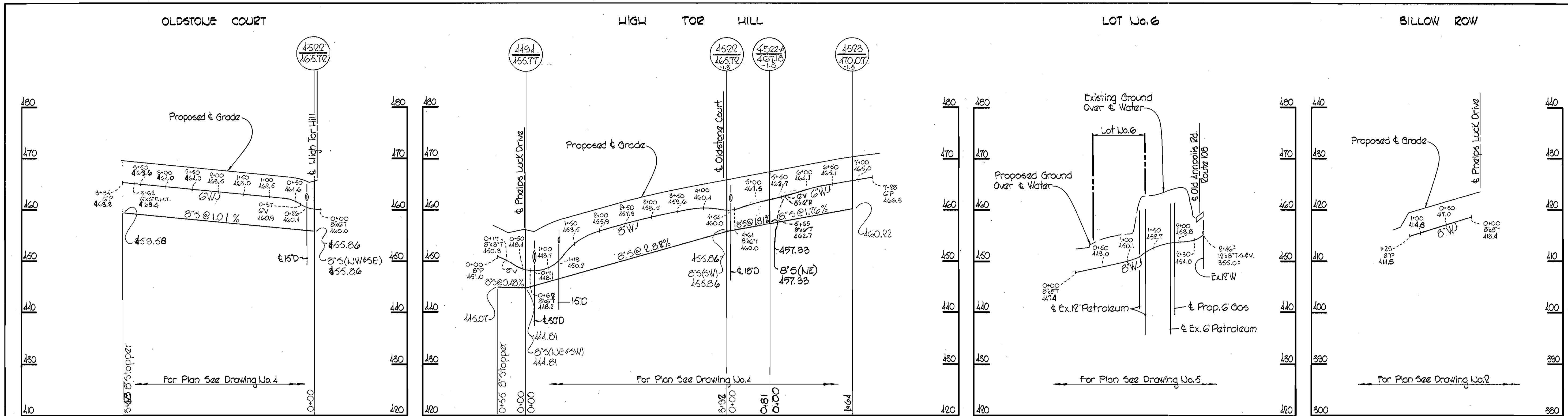
Annexed Milord

Village of Longreach, Section I-A
Phelps Luck
Contract No. C-343 W/S

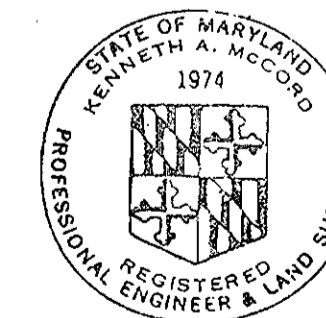
WHITMAN, REQUARDT & ASSOCIATES ENGINEERS 1304 ST. PAUL ST. BALTIMORE, MARYLAND	DEPARTMENT OF PUBLIC WORKS HOWARD COUNTY, MARYLAND 5-26-70 <i>W. O. Fulbeck</i> CHIEF-BUREAU OF WATER AND SEWER	CONTRACT NO. C-343 W/S	PROFILES OF WATER & SEWER MAINS	COLUMBIA VILLAGE OF LONGREACH ELECTION DISTRICT GUILFORD NO. 6	DRAWING NO. 7 OF 9	SCALE H:1"=100' V:1"=10'
--	---	-------------------------------	--	---	-----------------------------------	---

September 7, 1971 AS BUILT

WS 343 WS / 8



All Water = C.I.P.
All Sewer = A.C.P.



Kenneth A. McLeod

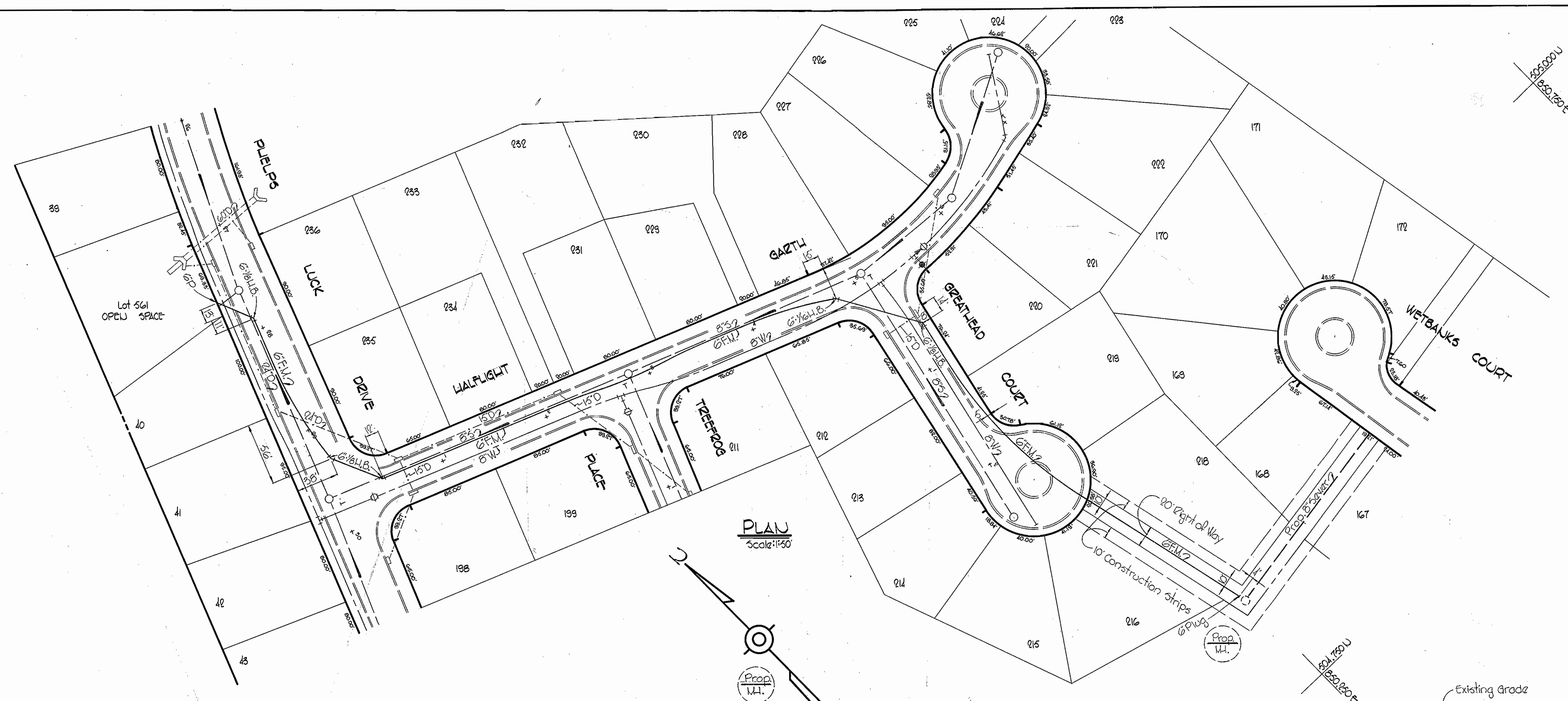
Village of Longreach, Section I-A
Phelps Luck
Contract No. C-343 W85

WHITMAN, REQUARDT & ASSOCIATES ENGINEERS 1304 ST. PAUL ST. BALTIMORE, MARYLAND	DEPARTMENT OF PUBLIC WORKS HOWARD COUNTY, MARYLAND 5-26-70 <i>w o Felbat</i> CHIEF-BUREAU OF WATER AND SEWER	CONTRACT NO. C-343 W85	PROFILES OF WATER & SEWER MAINS	COLUMBIA VILLAGE OF LONGREACH ELECTION DISTRICT GUILFORD NO. 6	DRAWING NO. 8 OF 9 SCALE H: 1"=100' V: 1"=10'
---	--	------------------------	------------------------------------	--	--

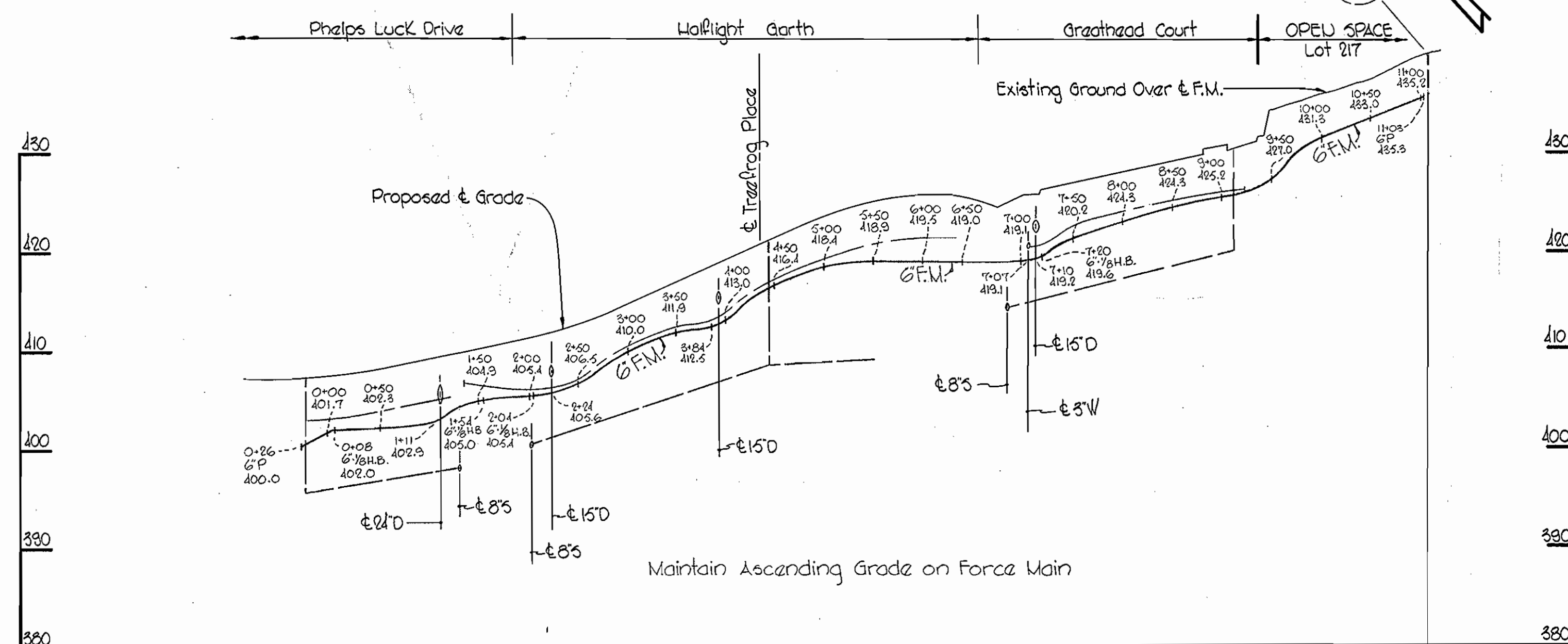
W. O. 6023-2

September 7, 1971 AS BUILT

WS 343 W-5/9

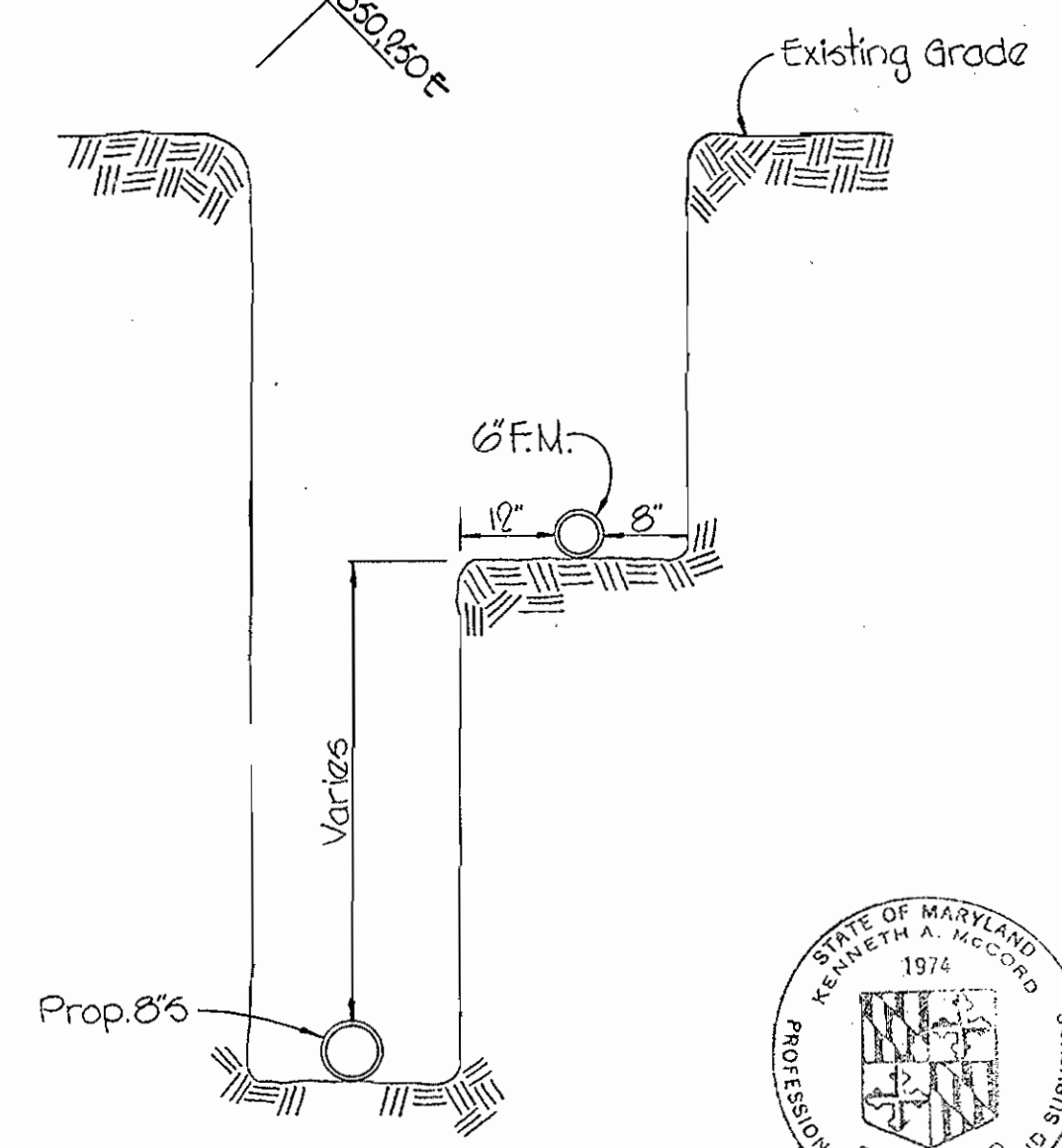


PLAN
Scale: 1"=50'

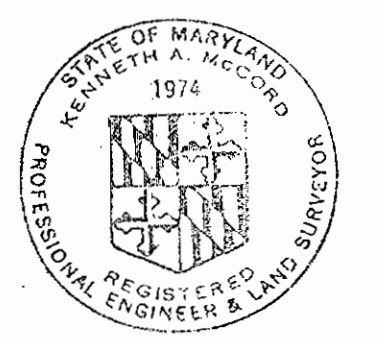


PROFILE
Scale: Horiz: 1"=100'
Vert: 1"=10'

VOID
THIS SHEET



DETAIL
8" S AND G.F.M. IN
JAME TRENCH
Scale: 1/2"=10'



Kenneth A. McCord

Village of Longreach, Section I-A
Phelps Luck
Contract No. C-343 W-5

WHITMAN, REQUARDT & ASSOCIATES ENGINEERS 1304 ST. PAUL ST. BALTIMORE, MARYLAND	DEPARTMENT OF PUBLIC WORKS HOWARD COUNTY, MARYLAND 5-26-70 <i>W. O. Palmer</i> CHIEF-BUREAU OF WATER AND SEWER	CONTRACT NO. C-343 W-5	PLAN AND PROFILE OF FORCE MAIN	COLUMBIA VILLAGE OF LONGREACH ELECTION DISTRICT GUILFORD NO. 6	DRAWING NO. 9 OF 9	SCALE AS SHOWN
---	--	------------------------	-----------------------------------	--	--------------------------	----------------------

W. O. 6028-2

September 17, 1971
AS BUILT