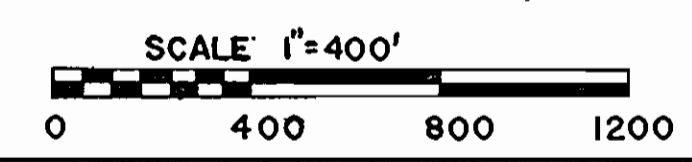
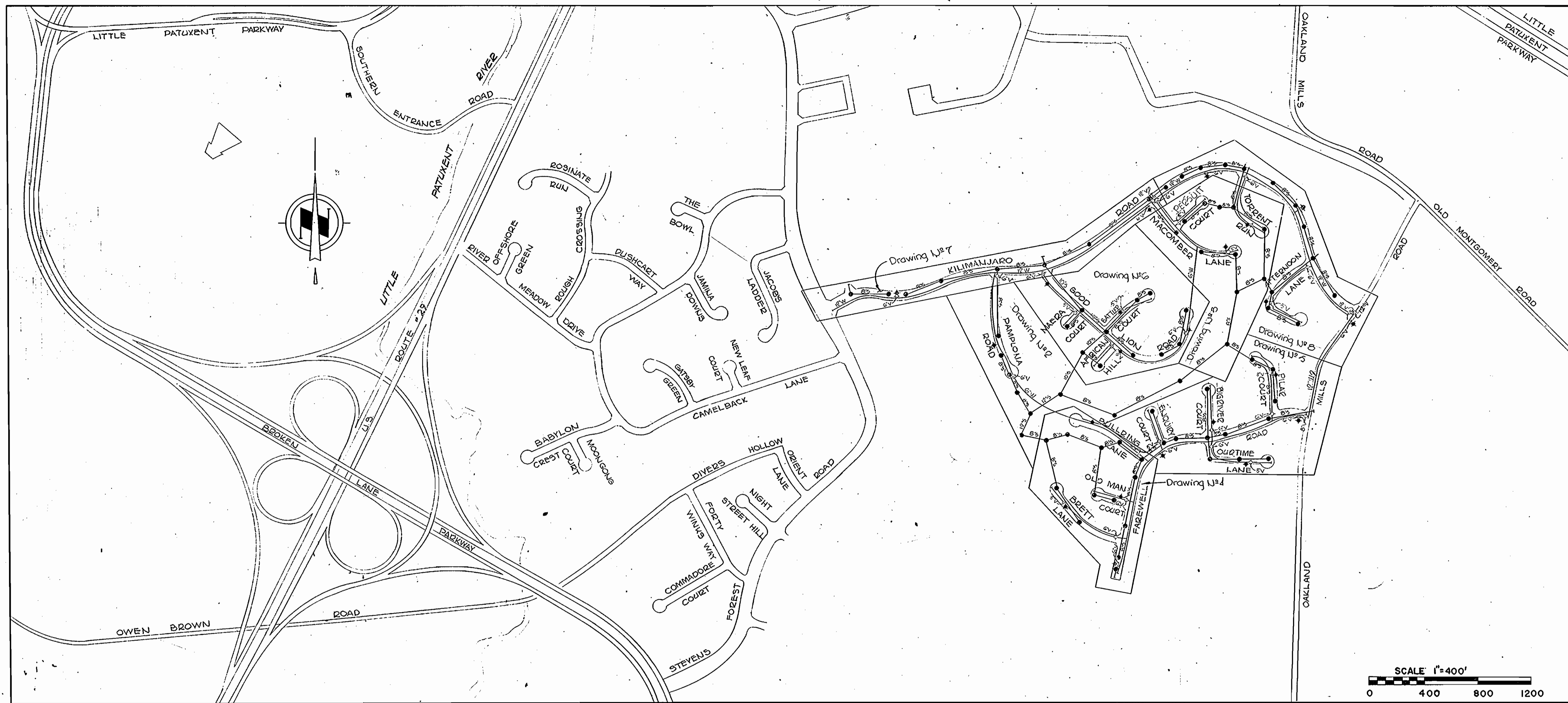
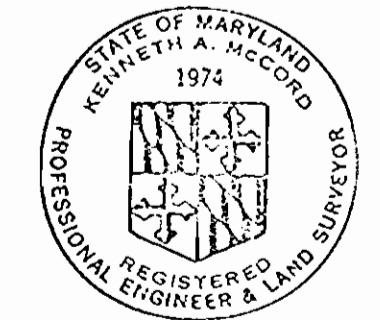


For General Notes
See Drawing U#4



QUANTITIES	
ITEM	QUANTITY
*12" Sewer	350'
10" Sewer	1120'
8" Sewer	18600'
12" Water	6000'
8" Water	2300'
6" Water	9000'
3" Water	3400'
Fire Hydrants	??

CONTRACT C-337 W&S
WATER AND SEWER MAIN EXTENSIONS
HOWARD COUNTY, MARYLAND
DEPARTMENT OF PUBLIC WORKS



Kenneth A. McLeod

- STAKEOUT BOOKS
 #1 4581
 #2 4702
- DIARY BOOKS
 #1 4567
 #2 4661
 #3 4706
 #4 4790

A.C. Pipe Used For Sewer
 C.I. Pipe Used For Water

Stevens Forest III
 Contract U#C-337-W&S

WHITMAN, REQUARDT & ASSOCIATES ENGINEERS 1304 ST. PAUL ST. BALTIMORE, MARYLAND	HOWARD COUNTY METROPOLITAN COMMISSION 11-21-69 DATE <i>W. O. Pollock</i> CHIEF ENGINEER	CONTRACT NO. C-337 W&S	LOCATION MAP OF WATER & SEWER MAIN EXTENSIONS	COLUMBIA VILLAGE OF OAKLAND MILLS ELECTION DISTRICT GUILFORD NO. 6	DRAWING NO. 1 OF 13	SCALE AS SHOWN
---	---	------------------------	--	--	---------------------	----------------

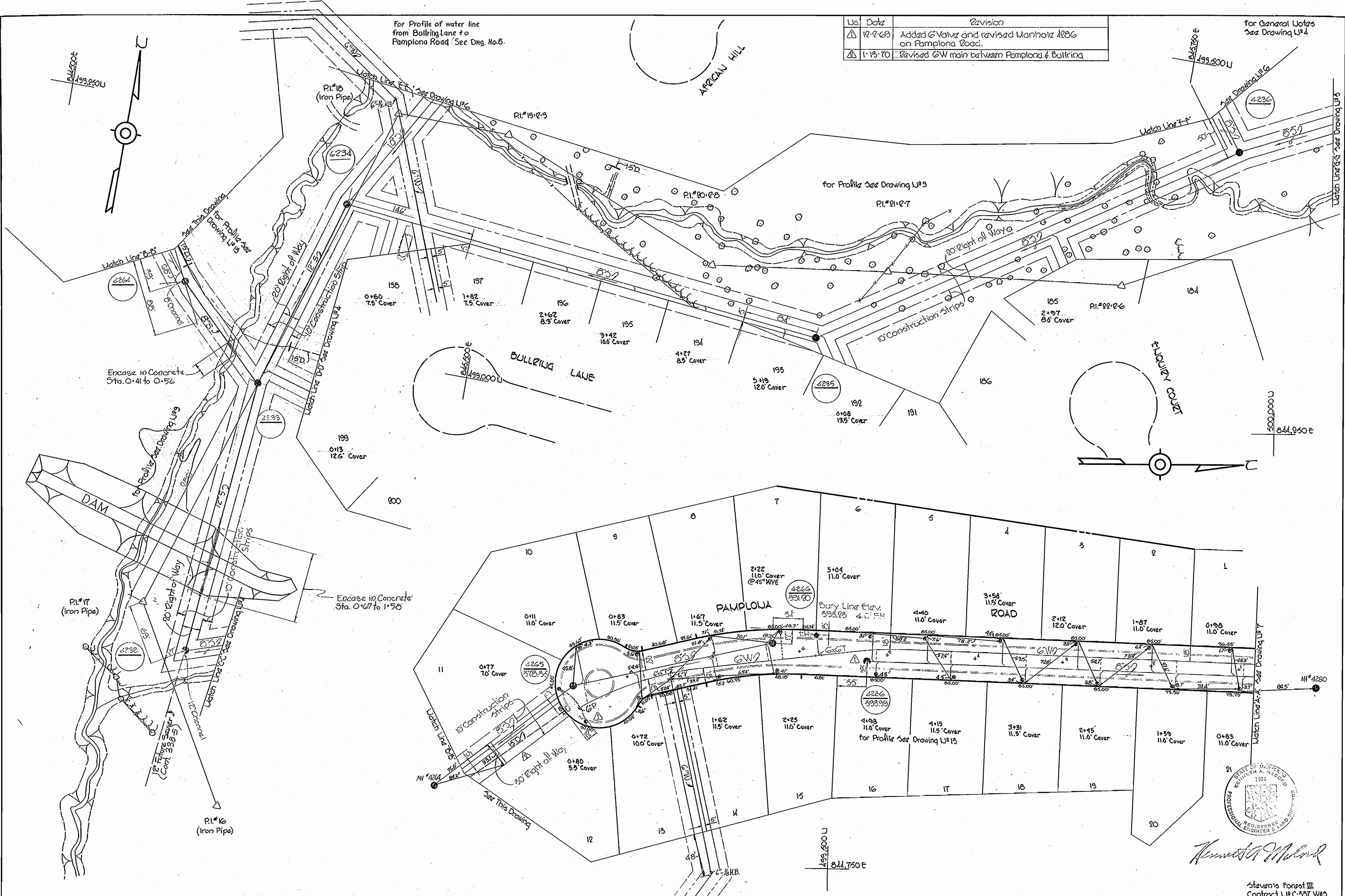
W. O. 6023-2

AS BUILT NOVEMBER 18, 1970

WS 337 W-5/1

WS 337 W-S/2

No.	Date	Revision
1	12-2-68	Added G Valve and revised Manhole 4286 on Pamplona Road.
2	1-13-70	Revised GW main between Pamplona & Bullring

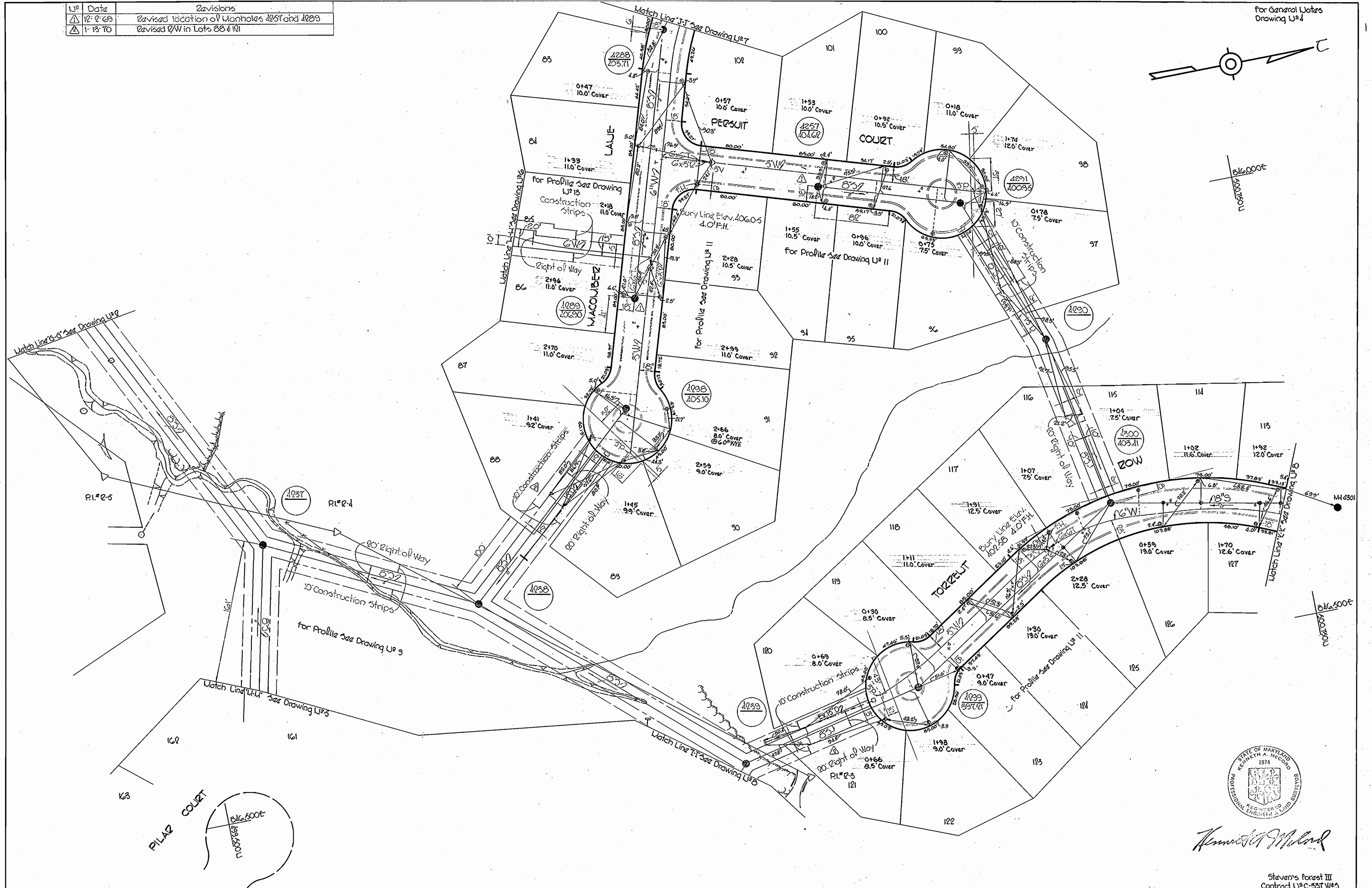
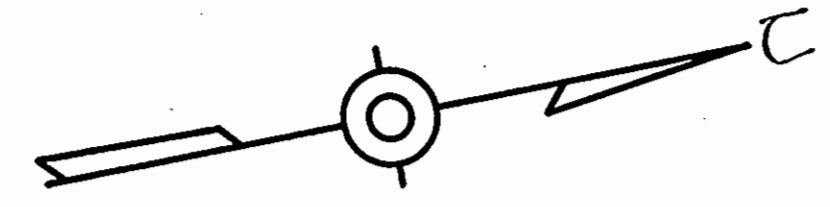


WHITMAN, REQUARDT & ASSOCIATES ENGINEERS 1304 ST. PAUL ST. BALTIMORE, MARYLAND	HOWARD COUNTY METROPOLITAN COMMISSION DATE <u>11-21-69</u> <i>W. O. Fallick</i> CHIEF ENGINEER	CONTRACT NO. C-337 W8S	PLAN OF WATER & SEWER MAINS	COLUMBIA VILLAGE OF OAKLAND MILLS ELECTION DISTRICT GUILFORD NO. 6	DRAWING NO. <u>2</u> OF <u>13</u>	SCALE 1" = 50' 500-485 499-485 498-485
					NOVEMBER 13, 1970 AS BUILT 18° 25' 48"	

W. O. 6023-2

U#	Date	Revisions
1	12-2-69	Revised location of Manholes 4257 and 4259
2	1-13-70	Revised @/W in Lots 88 & 121

For General Notes Drawing U#4



Kenneth A. McLeod

Steven's Forest III
Contract U#C-337 W&S

WHITMAN, REQUARDT & ASSOCIATES ENGINEERS 1304 ST. PAUL ST. BALTIMORE, MARYLAND	HOWARD COUNTY METROPOLITAN COMMISSION 11-21-69 <i>W.O. Gilbert</i> DATE CHIEF ENGINEER	CONTRACT NO. C-337 W&S	PLAN OF WATER & SEWER MAINS	COLUMBIA VILLAGE OF OAKLAND MILLS ELECTION DISTRICT GUILFORD NO. 6	DRAWING NO. 3 OF 13 SCALE 1" = 50' 199-181 500-181
---	--	------------------------	--------------------------------	--	---

W. O. 6083-2

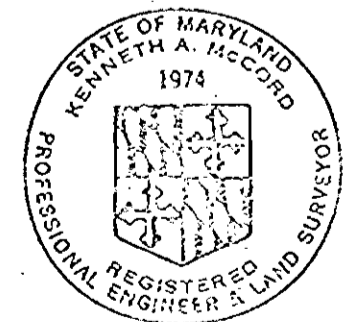
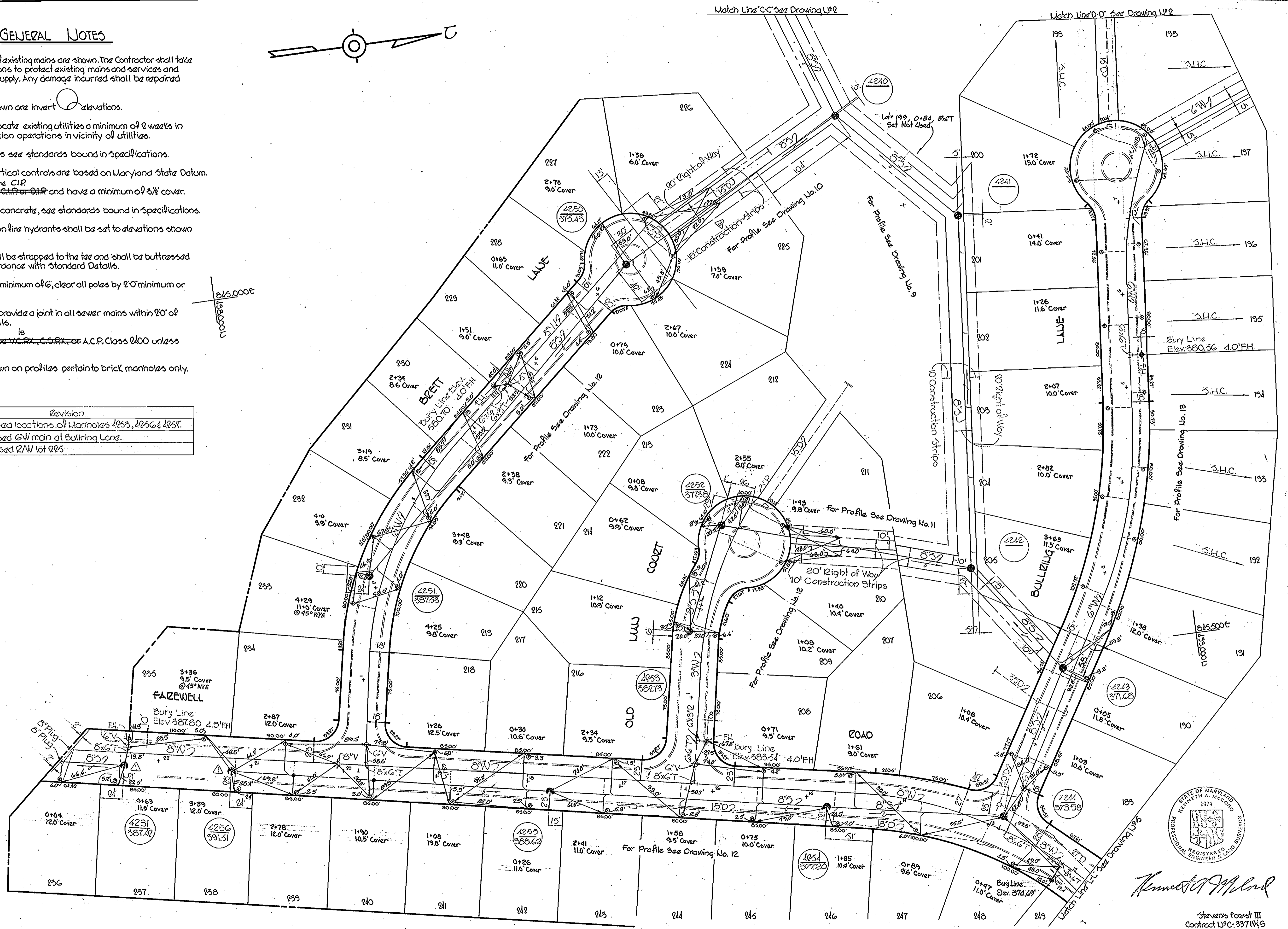
AS BUILT NOVEMBER 18, 1970 F.B. 1516

WS 337-WS/3

GENERAL NOTES

1. Approximate location of existing mains are shown. The Contractor shall take all necessary precautions to protect existing mains and services and maintain uninterrupted supply. Any damage incurred shall be repaired immediately.
2. All pipe elevations shown are invert elevations.
3. The Contractor shall locate existing utilities a minimum of 2 weeks in advance of construction operations in vicinity of utilities.
4. For all standard details see standards bound in Specifications.
5. All horizontal and vertical controls are based on Maryland State Datum.
6. All water mains are CIP and have a minimum of 3/4" cover.
7. Block all fittings with concrete, see standards bound in Specifications.
8. Bury Line elevations on fire hydrants shall be set to elevations shown on the drawings.
9. All fire hydrants shall be strapped to the tee and shall be buttressed with concrete in accordance with Standard Details.
10. Clear all utilities by a minimum of 6', clear all poles by 2' minimum or tunnel as required.
11. The Contractor shall provide a joint in all sewer mains within 20' of exterior manhole walls.
12. All sewer pipe shall be V.C.P. or C.C.P. or A.C.P. Class 200 unless otherwise noted.
13. 12" Manhole walls shown on profiles pertain to brick manholes only.

No.	Date	Revision
1	12-2-63	Revised locations of Manholes 4253, 4256 & 4257.
2	1-13-70	Revised S/W main at Bullring Lane.
3	1-13-70	Revised R/W lot 225.



Kenneth A. McCord

Stanvers Forest III
Contract UPC-337W/S

WHITMAN, REQUARDT & ASSOCIATES
ENGINEERS
1304 ST. PAUL ST.
BALTIMORE, MARYLAND

HOWARD COUNTY METROPOLITAN COMMISSION
DATE 11-21-69 *W. O. Elliott*
CHIEF ENGINEER

CONTRACT NO. C-337W/S

PLAN OF
WATER & SEWER MAINS

COLUMBIA
VILLAGE OF OAKLAND MILLS
ELECTION DISTRICT GUILFORD NO. 6

DRAWING
NO. 4
OF 13

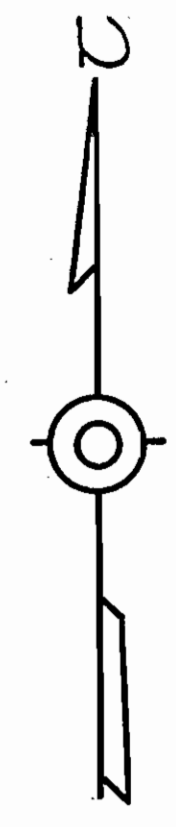
SCALE
1" = 50'

AS BUILT NOVEMBER 18, 1970

WS 337 W-S/4

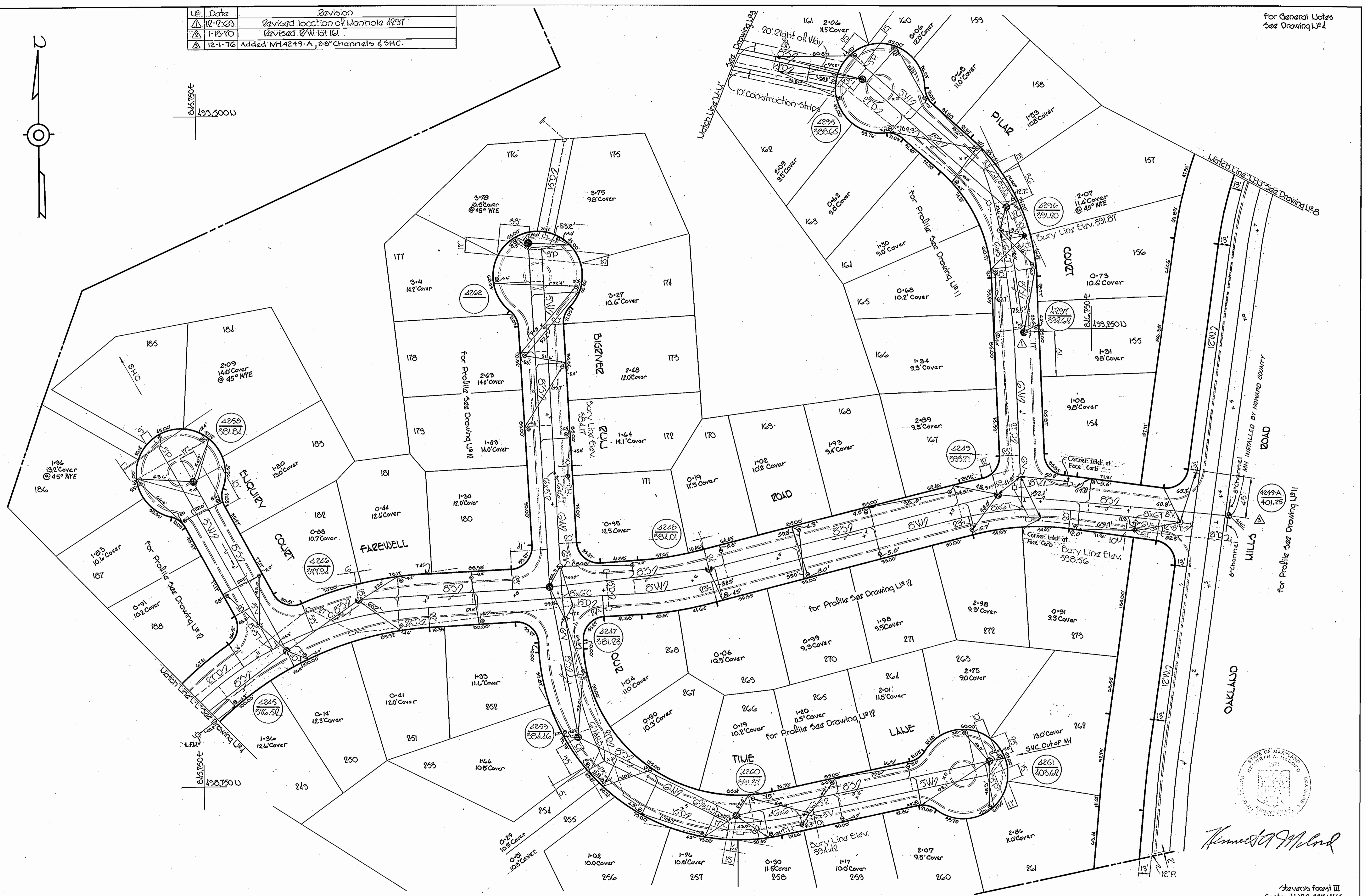
W. O. 6023-2

Up.	Date	Revision
▲	12-7-69	Revised location of Manhole 4297
▲	1-15-70	Revised W lot 161
▲	12-1-76	Added MH 4249-A, 2-8" channels & SHC.



645.750 ±
199.500 ±

For General Notes
See Drawing U#4



WS 337-W-5/5

Annexed to Map



WHITMAN, REQUARDT & ASSOCIATES ENGINEERS 1304 ST. PAUL ST. BALTIMORE, MARYLAND	HOWARD COUNTY METROPOLITAN COMMISSION DATE <u>11-21-69</u> <i>W O Fildes</i> CHIEF ENGINEER	CONTRACT NO. <u>C-337 W8S</u>	PLAN OF WATER & SEWER MAINS	COLUMBIA VILLAGE OF OAKLAND MILLS ELECTION DISTRICT GUILFORD NO. 6	DRAWING NO. <u>5</u> OF <u>13</u> SCALE 1" = 50' AS BUILT
---	---	-------------------------------	--------------------------------	--	--

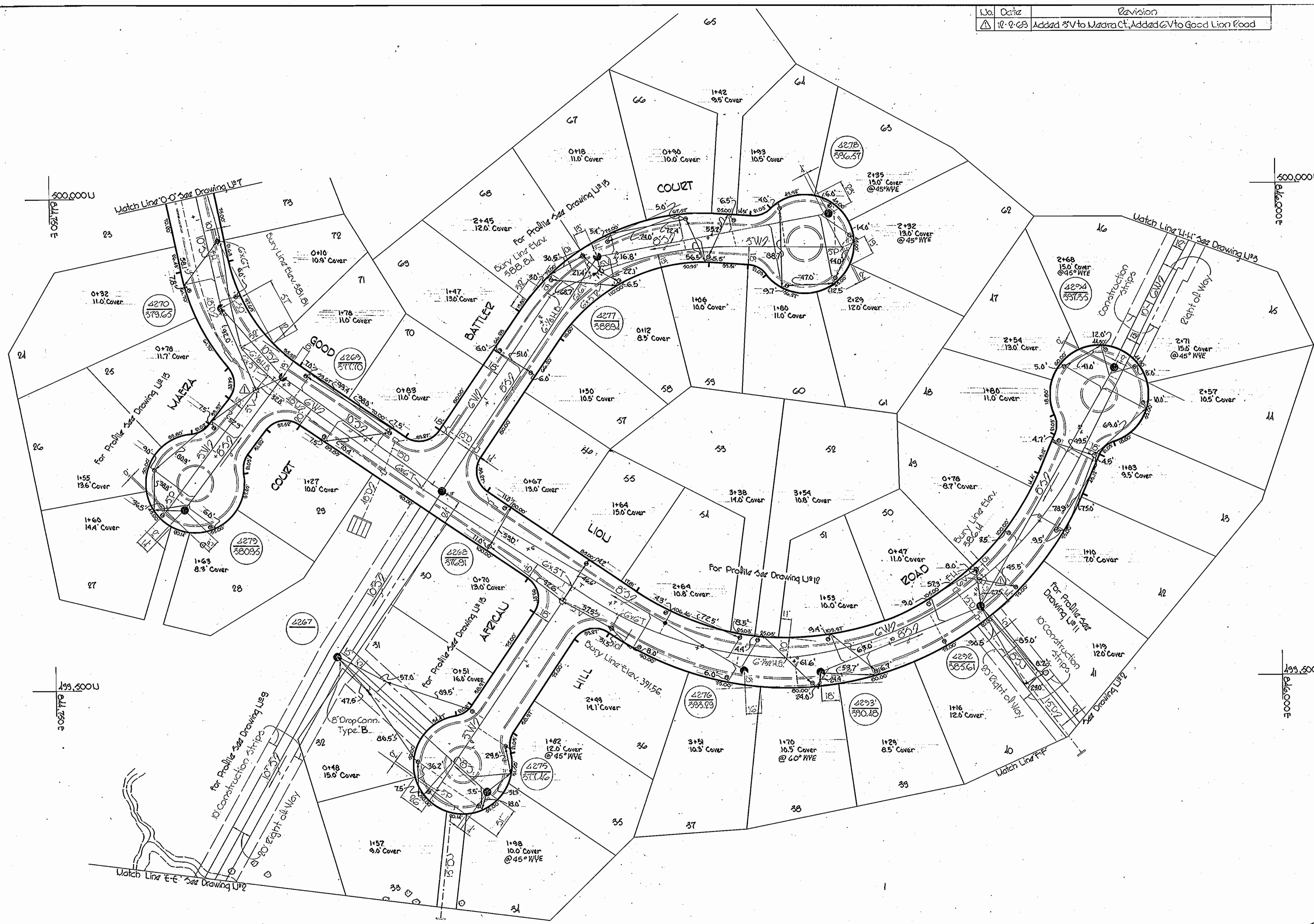
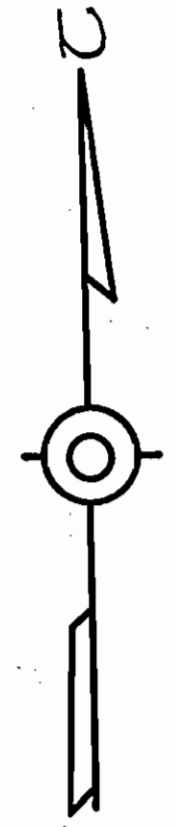
Surveyor's Record III
Contract UPC-557 W85

NOVEMBER 18, 1970

WS 337 W-S/6

No.	Date	Revision
1	10-2-69	Added 3" V to Maara Ct, Added 6" V to Good Lion Road

For General Notes See Drawing No. 1



Kenneth A. MacCord

Stavon's Forest III
Contract U&C-337 W&S

WHITMAN, REQUARDT & ASSOCIATES
ENGINEERS
1304 ST. PAUL ST.
BALTIMORE, MARYLAND

HOWARD COUNTY METROPOLITAN COMMISSION
DATE 11-21-69 W. O. GORDON
CHIEF ENGINEER

CONTRACT NO. C-337 W&S

PLAN OF
WATER & SEWER MAINS

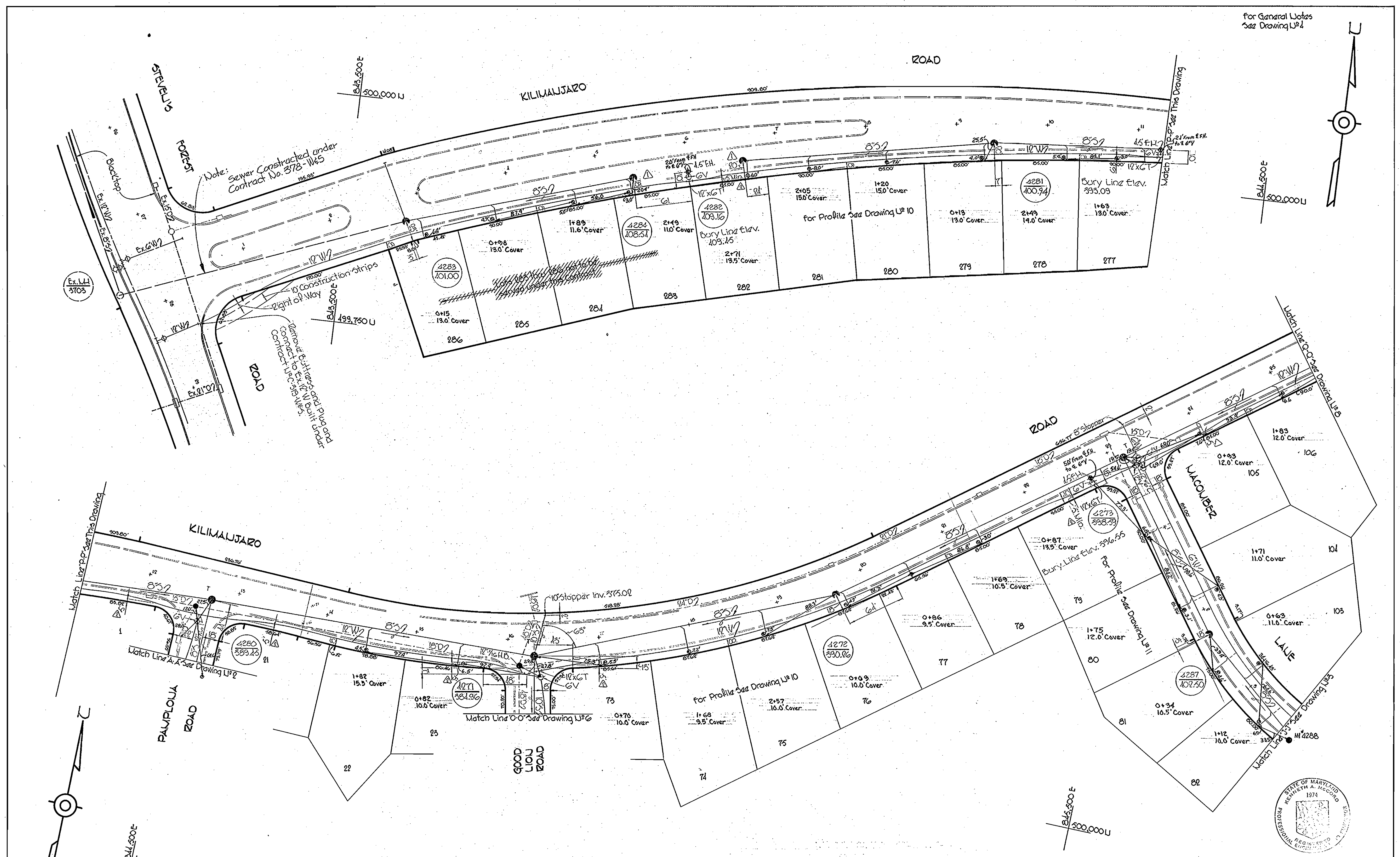
COLUMBIA
VILLAGE OF OAKLAND MILLS
ELECTION DISTRICT GUILFORD NO. 6

DRAWING NO. <u>6</u> OF <u>13</u>	SCALE 1" = 50'
-----------------------------------	----------------

AS BUILT NOVEMBER 18, 1970 P. 45/46

W. O. GORDON

WS 337 W-5 / 7



For General Notes
See Drawing U#1

Note: Sewer Constructed under
Contract No. 378-1145

Remove Curbs and Plug and
Connect to Ex. 12\"/>

Match Line A-A See Drawing U#2

Match Line B-B See Drawing U#6

No.	Date	Revision
3-5-70		Revised invert elev. of SP in Kilimanjaro Road.
1-15-70		Revised dimensions on 12\"/>
12-2-69		Revised location of Manholes 4284 and 4282.



Kenneth A. McLeod

WHITMAN, REQUARDT & ASSOCIATES
ENGINEERS
1304 ST. PAUL ST.
BALTIMORE, MARYLAND

HOWARD COUNTY METROPOLITAN COMMISSION
11-21-69 *W. O. Fallick*
DATE CHIEF ENGINEER

CONTRACT NO. C-337 W&S

PLAN OF
WATER & SEWER MAINS

COLUMBIA
VILLAGE OF OAKLAND MILLS
ELECTION DISTRICT GUILFORD NO. 6

Stevens Form 337
Contract U#C-337 W&S

DRAWING NO. 7 OF 13	SCALE 1"=50'
---------------------	--------------

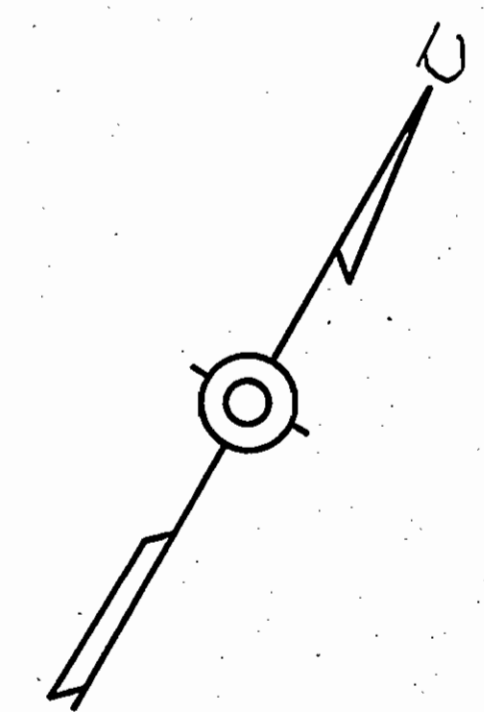
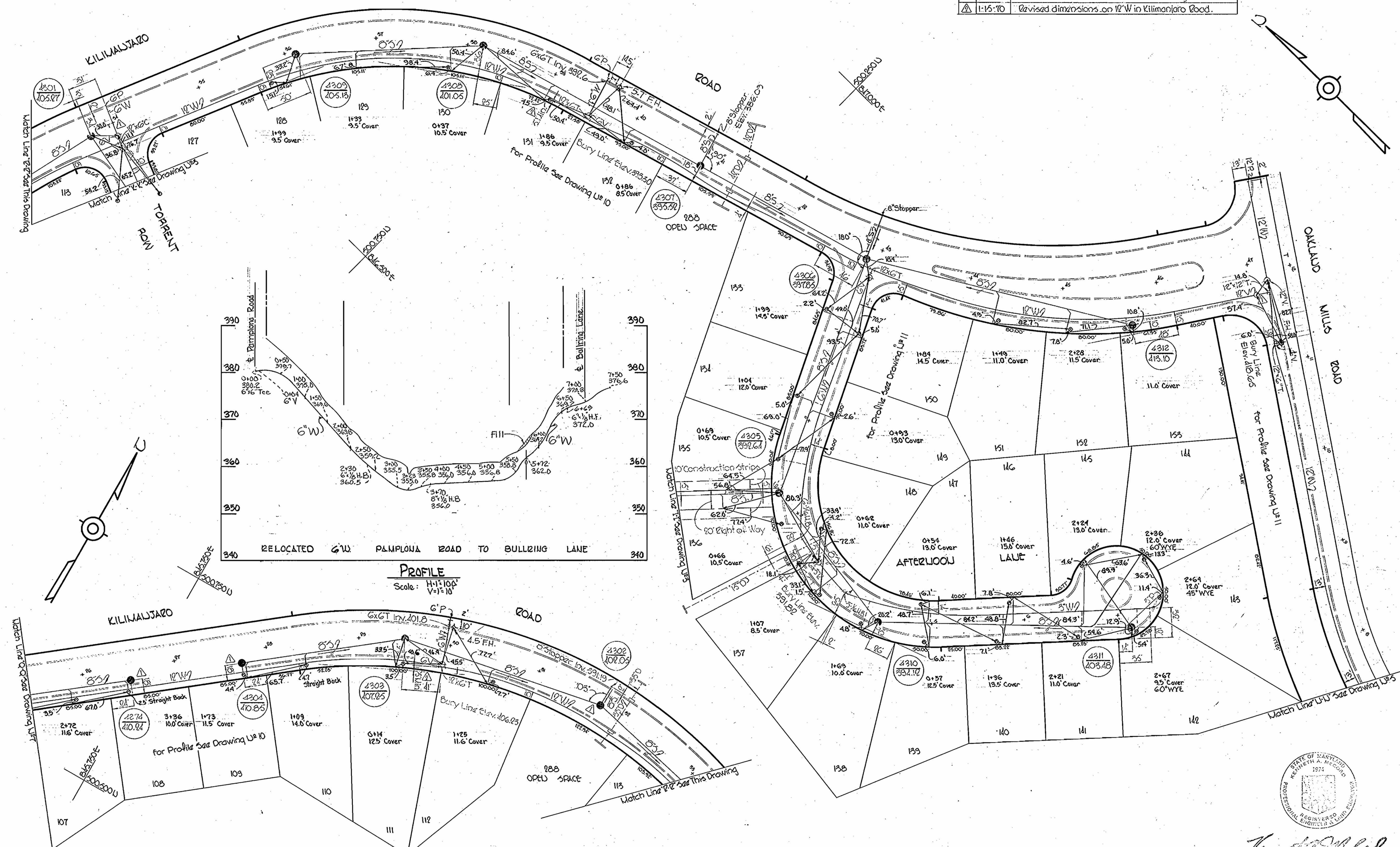
W. O. 6023-2

AS BUILT NOVEMBER 18, 1970

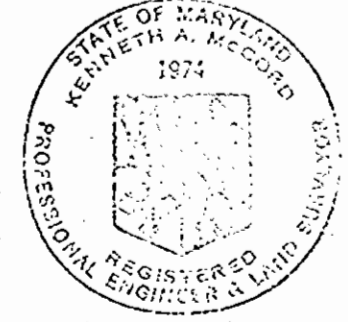
WS 337 W-5/8

No.	Date	Revision
1	12-2-69	Revised location of Manholes 4274 and 4304, added 12" V and 8" sewer and 6" water crossing.
2	1-15-70	Revised dimensions on 12" W in Kilimanjaro Road.

For General Notes See Drawing U#4



Howard C. Whitman

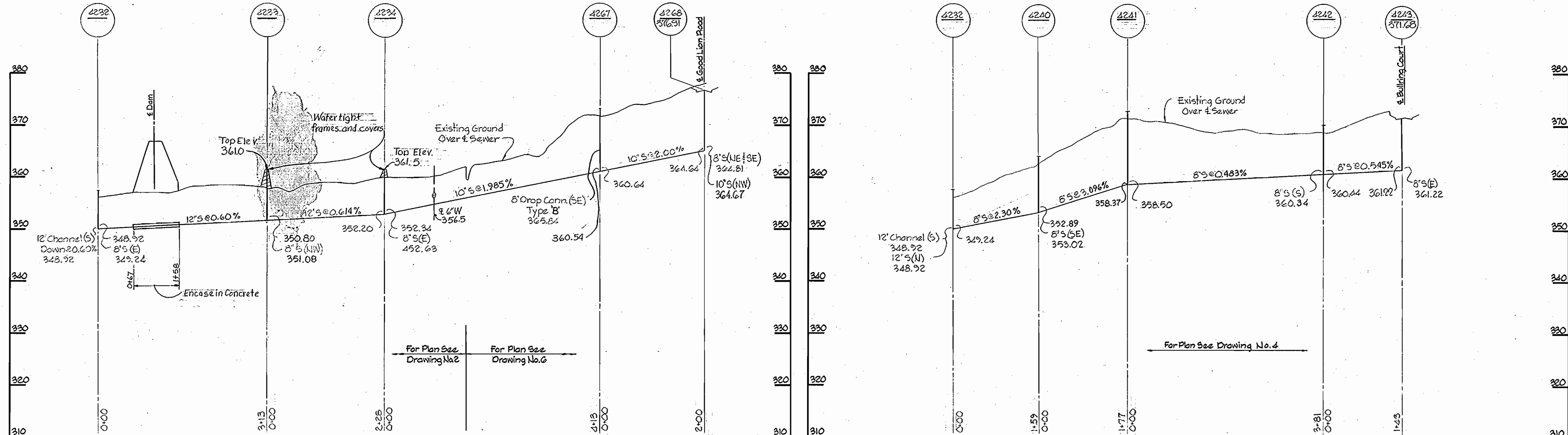


WHITMAN, REQUARDT & ASSOCIATES ENGINEERS 1304 ST. PAUL ST. BALTIMORE, MARYLAND	HOWARD COUNTY METROPOLITAN COMMISSION DATE <u>11-21-69</u> <i>W. O. Gilbert</i> CHIEF ENGINEER	CONTRACT NO. <u>C-337 W&S</u>	PLAN AND PROFILE OF WATER & SEWER MAINS	COLUMBIA VILLAGE OF OAKLAND MILLS ELECTION DISTRICT GUILFORD NO. 6	DRAWING NO. <u>8</u> OF <u>13</u>	SCALE AS SHOWN
					Stamps for Contract III Contract U#C-337 W&S	150-104 500-104 500-105

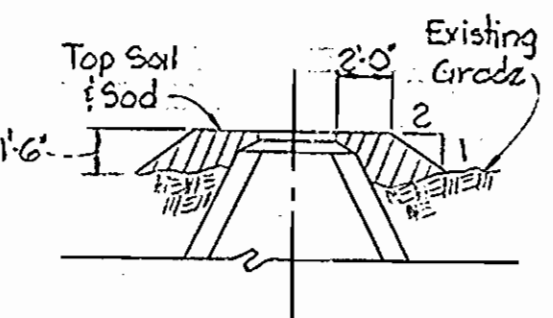
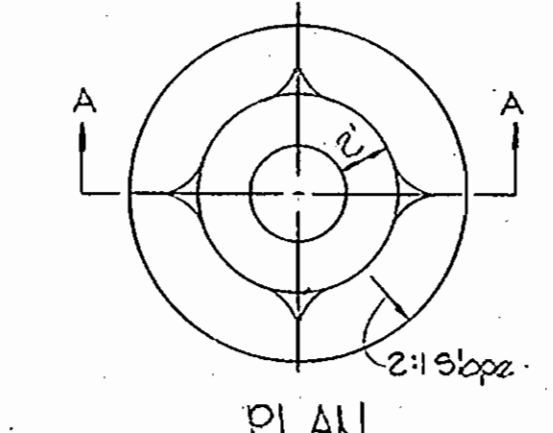
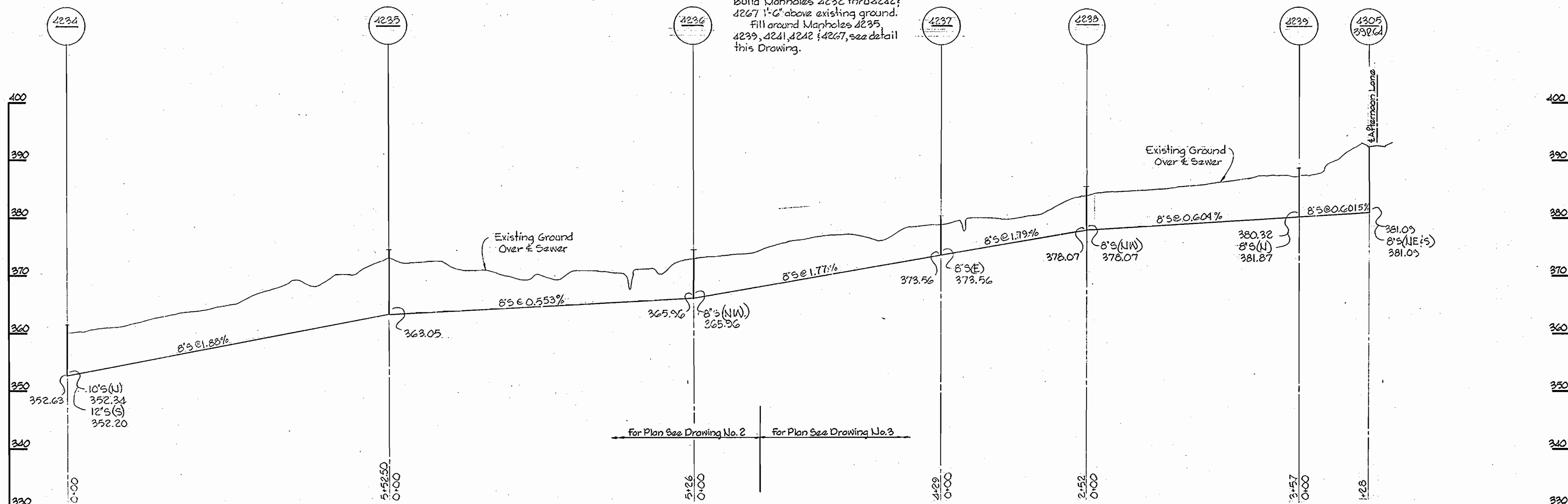
W. O. 6023-2

AS BUILT NOVEMBER 18, 1970

For General Notes See Drawing W&S 4



NOTE:
 Build Manholes 4232 thru 4242!
 4267 1'-6" above existing ground.
 Fill around Manholes 4235,
 4239, 4241, 4242 & 4267, see detail
 this Drawing.



SECTION "A-A"
 FILL AT MANHOLE



Kenneth A. McLeod

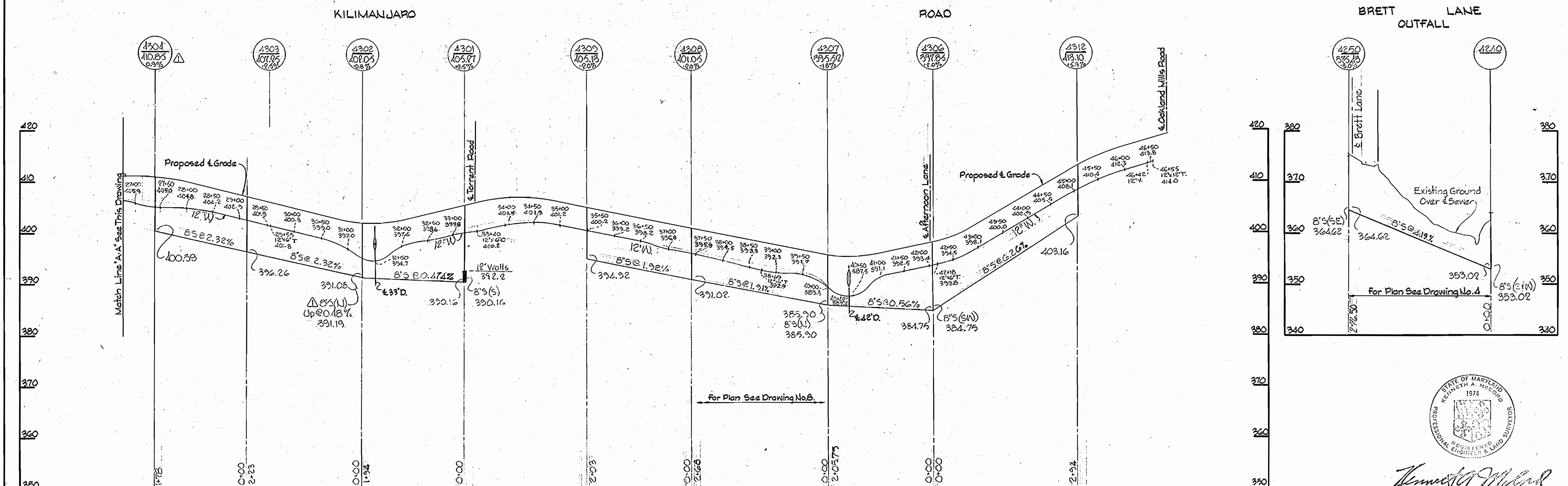
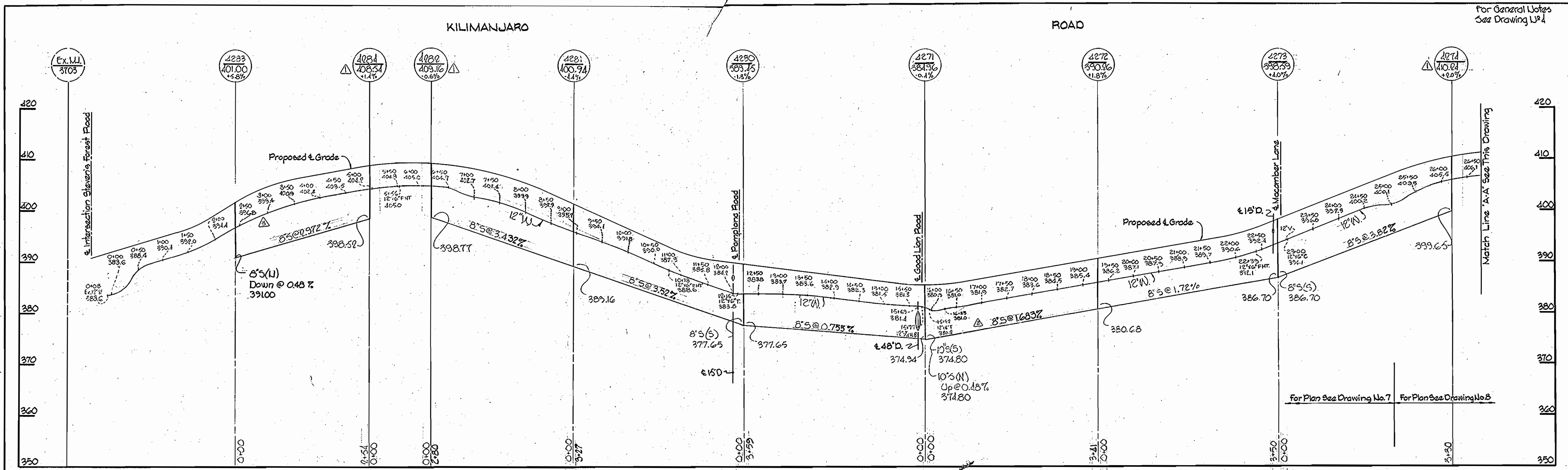
Stevens Forest III
 Contract U&C-337 W&S

WS 337 W-S/9

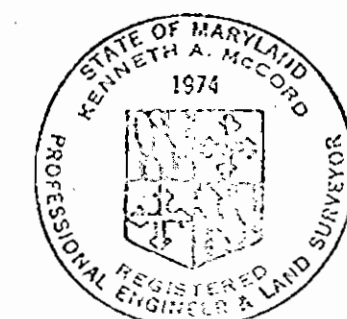
WHITMAN, REQUARDT & ASSOCIATES ENGINEERS 1304 ST. PAUL ST. BALTIMORE, MARYLAND	DEPARTMENT OF PUBLIC WORKS HOWARD COUNTY, MARYLAND 11-21-69 DATE <i>W O Falbert</i> CHIEF-BUREAU OF WATER AND SEWER	CONTRACT NO. C-337 W&S	PROFILES OF WATER & SEWER MAINS	COLUMBIA VILLAGE OF OAKLAND MILLS ELECTION DISTRICT GUILFORD NO. 6	DRAWING NO. 9 OF 13 SCALE H: 1"=100' V: 1"=10' AS BUILT NOVEMBER 18, 1970
---	--	------------------------	------------------------------------	--	---

W. O. 6023-2

WS 337 W-5/10



1-13-70	Revised 12" W.M. between Sta 15+50 & 17+00 on Kilimanjaro	3-5-70	Revised Water main between Sta 0+00 and 4+50, revised Sewer between M.H.'s 4283 & 4284 on Kilimanjaro Rd.
12-2-69	Revised location of Manholes 4281, 4282, 4274, and 4304, Added 8" S(U) to Manhole 4302.	3-17-70	Lowered 12" W.M. @ Intersection of Kilimanjaro & Steven's Forest
No.	Date	Revision	



Kenneth A. McLeod

WHITMAN, REQUARDT & ASSOCIATES
ENGINEERS
1304 ST. PAUL ST.
BALTIMORE, MARYLAND

DEPARTMENT OF PUBLIC WORKS
HOWARD COUNTY, MARYLAND
11-21-69
W. O. Folber
CHIEF-BUREAU OF WATER AND SEWER

CONTRACT NO. C-337 W&S

PROFILES OF
WATER & SEWER MAINS

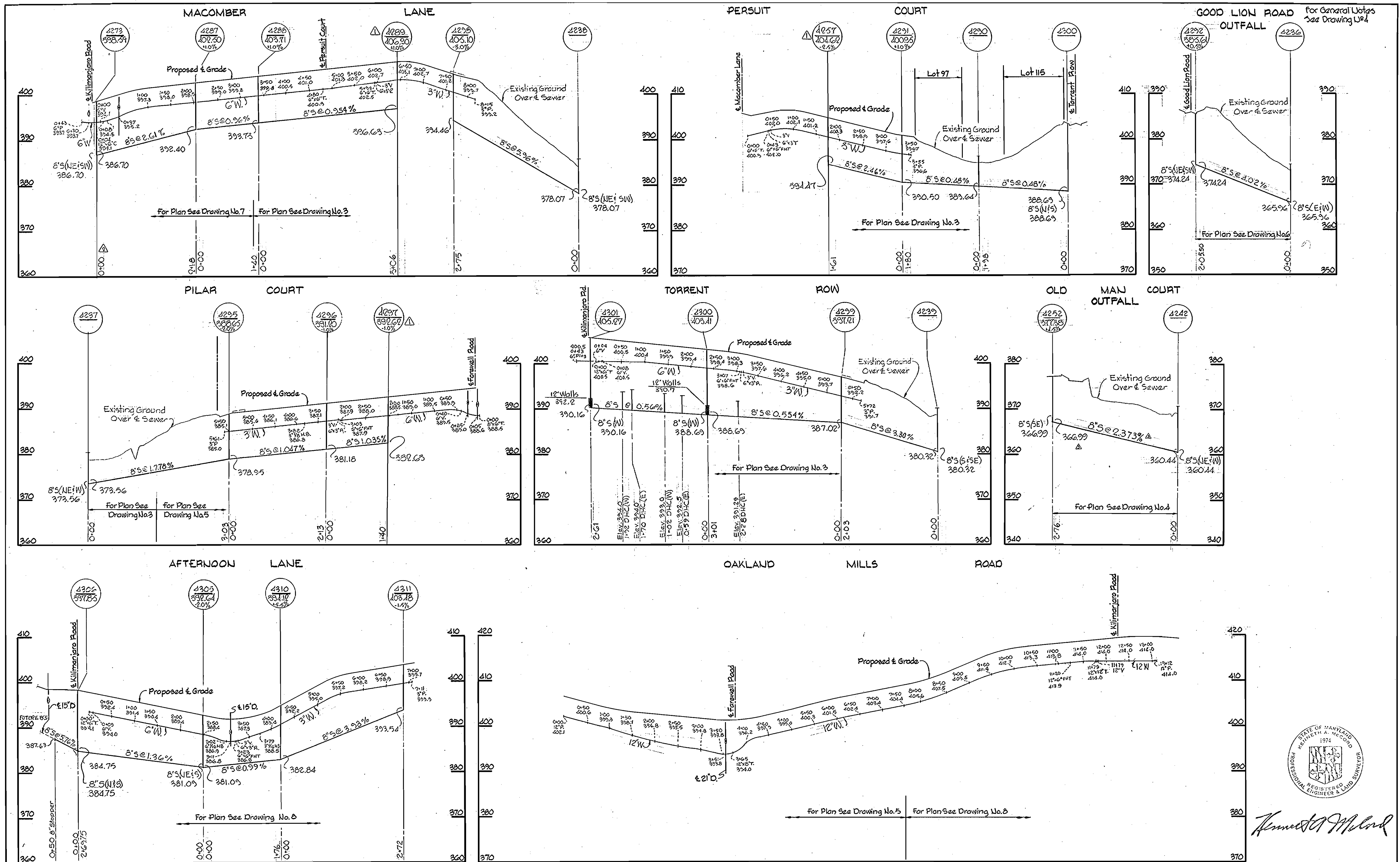
COLUMBIA
VILLAGE OF OAKLAND MILLS
ELECTION DISTRICT GUILFORD NO. 6

DRAWING NO. 10 OF 13
SCALE H: 1"=100' V: 1"=10'

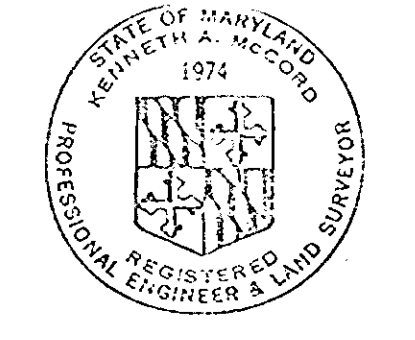
NOVEMBER 18, 1970 AS BUILT

W. O. 6023-2

WS 337 W-5/11



1-28-70	Revised invert and slope at MH 4252
1-13-70	Revised sewer length between MH 4273 and 4287
12-2-68	Revised location of Manholes 4283, 4252 and 4297
No. / Date	Revision



Kenneth A. McLeod

Steven's Forest III
Contract WPC-337-W&S

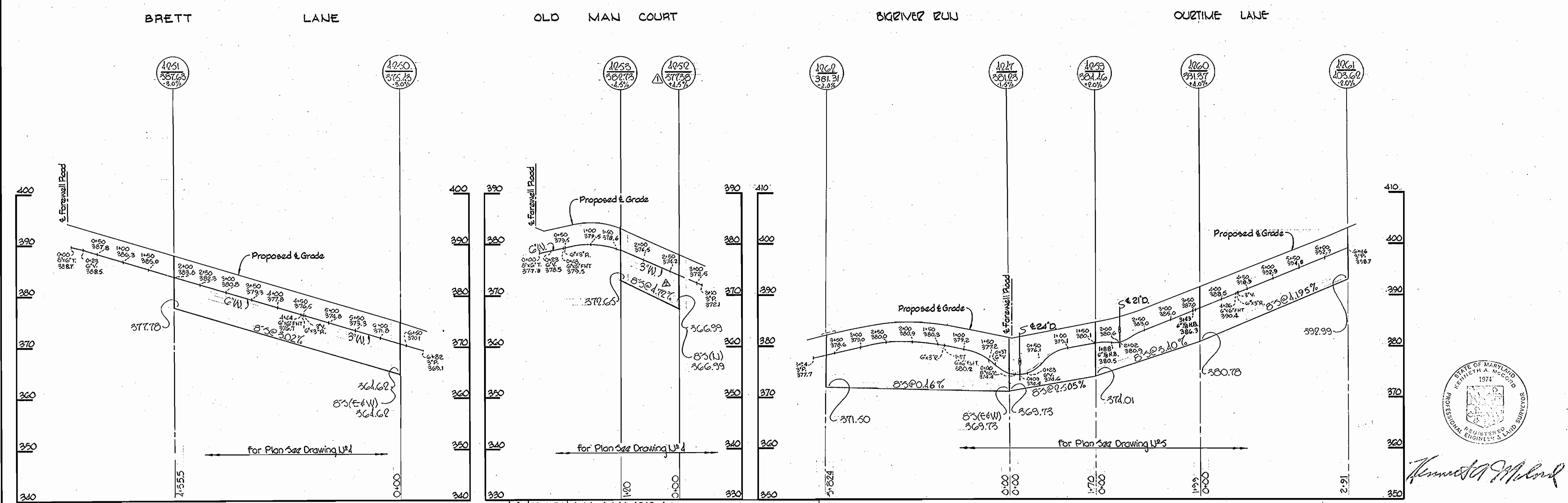
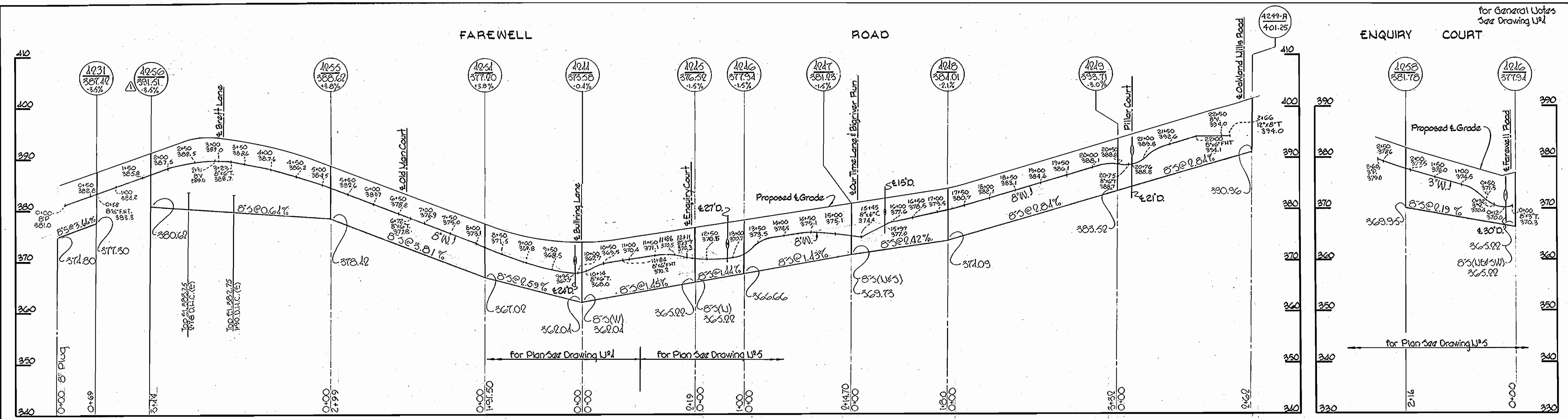
WHITMAN, REQUARDT & ASSOCIATES ENGINEERS 1304 ST. PAUL ST. BALTIMORE, MARYLAND	DEPARTMENT OF PUBLIC WORKS HOWARD COUNTY, MARYLAND 11-21-69 DATE <i>W. O. Folbert</i> CHIEF-BUREAU OF WATER AND SEWER	CONTRACT NO. C-337W&S	PROFILES OF WATER & SEWER MAINS	COLUMBIA VILLAGE OF OAKLAND MILLS ELECTION DISTRICT GUILFORD NO. 6	DRAWING NO. 11 OF 13	SCALE H: 1"=100' V: 1"=10'
					AS BUILT NOV. 18, 1970	

W. O. 6023-2

WS 337 W-5/12

Suspension

Suspension



▲ 12-1-76	Added MH. 4249-A
▲ 1-28-70	Revised Grade Between Manholes 4252 & 4253
▲ 12-2-69	Revised location of Manholes 4256, 4257, & 4258.
No. Date	Revision



Kenneth J. McLeod

WHITMAN, REQUARDT & ASSOCIATES
ENGINEERS
1304 ST. PAUL ST.
BALTIMORE, MARYLAND

DEPARTMENT OF PUBLIC WORKS
HOWARD COUNTY, MARYLAND
11-21-69
W. O. Pellet
CHIEF-BUREAU OF WATER AND SEWER

CONTRACT NO. C-337 WBS

PROFILES OF
WATER & SEWER MAINS

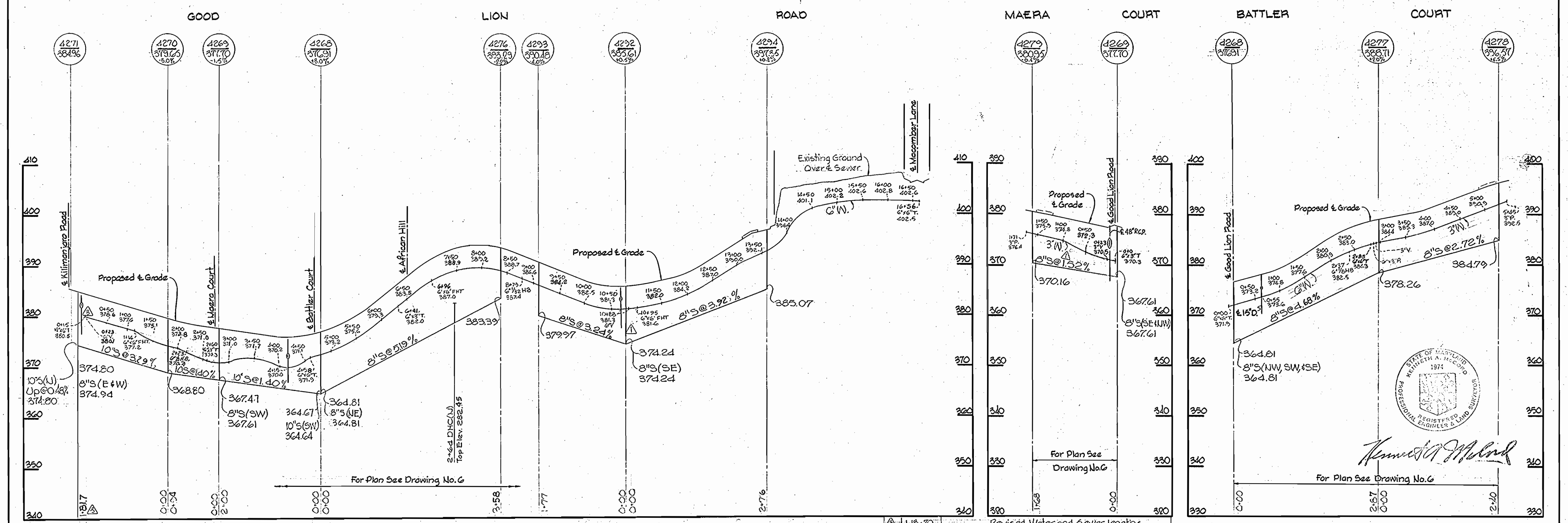
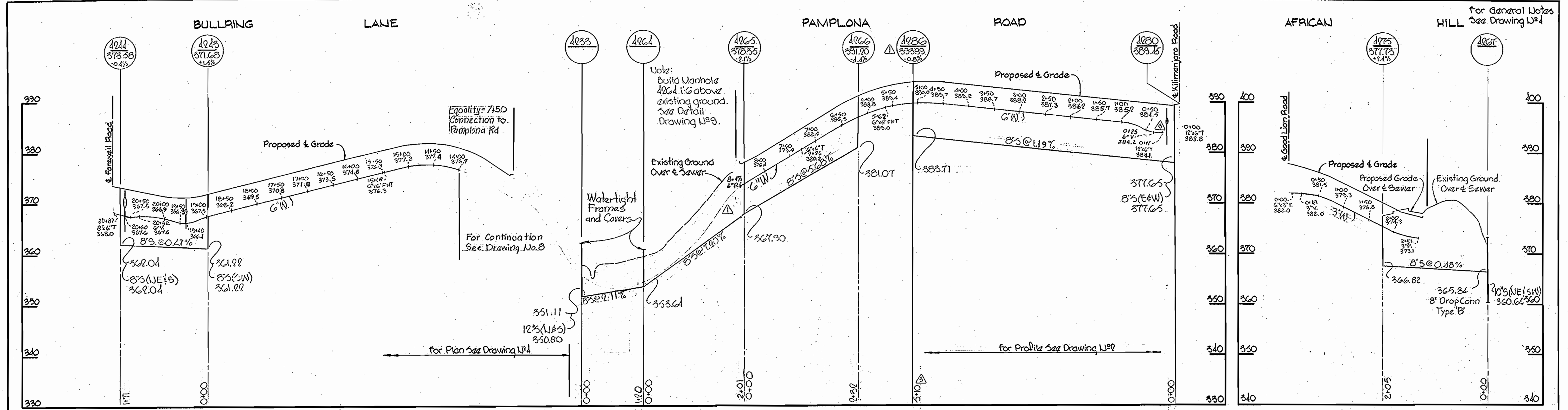
COLUMBIA
VILLAGE OF OAKLAND MILLS
ELECTION DISTRICT GUILFORD NO. 6

DRAWING NO. 12 OF 13
SCALE H: 1"=100 V: 1"=10'

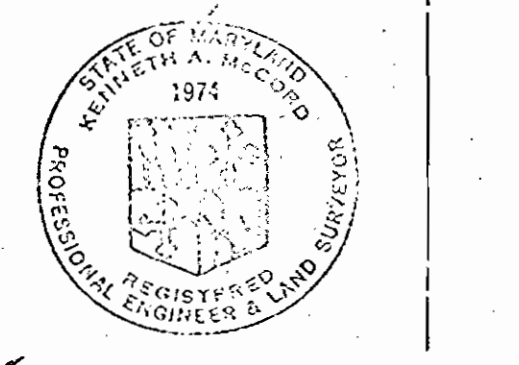
AS BUILT NOV. 18, 1970

W. O. 6023-2

WS 337 W-5 / 13



Revised location of Manhole 4286, Added GV to Pamplona Rd & Good Lion Rd. Added 5V to Maera Court.
 Revision
 11-13-70



Kenneth A. McLeod

WHITMAN, REQUARDT & ASSOCIATES ENGINEERS 1304 ST. PAUL ST. BALTIMORE, MARYLAND	DEPARTMENT OF PUBLIC WORKS HOWARD COUNTY, MARYLAND 11-21-69 <i>W. O. Gilbert</i> CHIEF - BUREAU OF WATER AND SEWER	CONTRACT NO. C-337 W&S	PROFILES OF WATER & SEWER MAINS	COLUMBIA VILLAGE OF OAKLAND MILLS ELECTION DISTRICT GUILFORD NO. 6	DRAWING NO. 13 OF 13	SCALE H: 1"=100' V: 1"=10'
					AS BUILT	

W. O. 6023-2

NOVEMBER 13, 1970