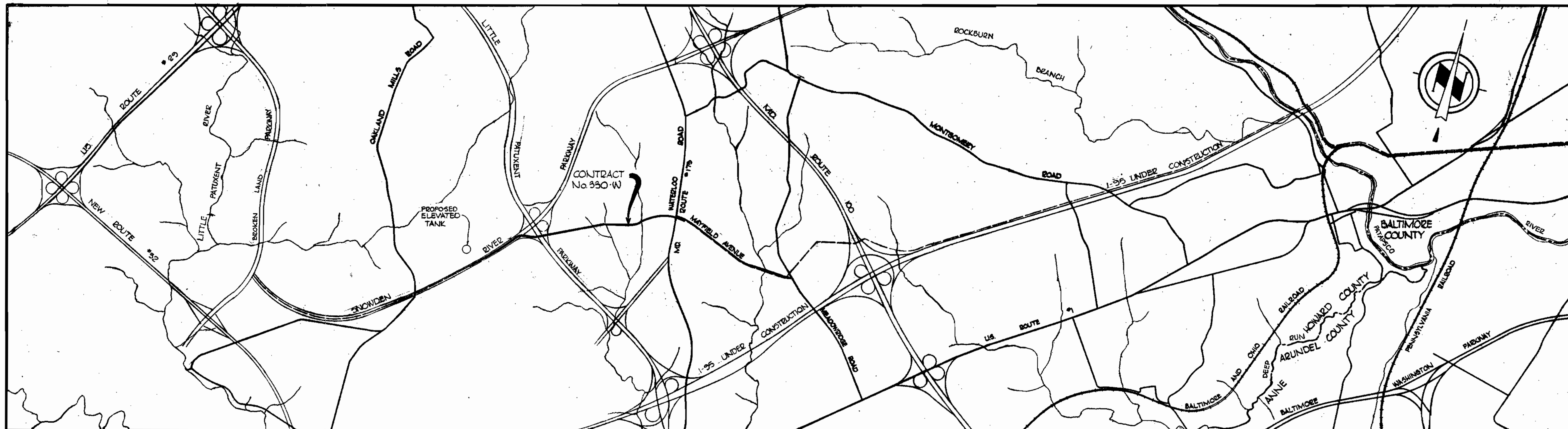


WS 330-W/1

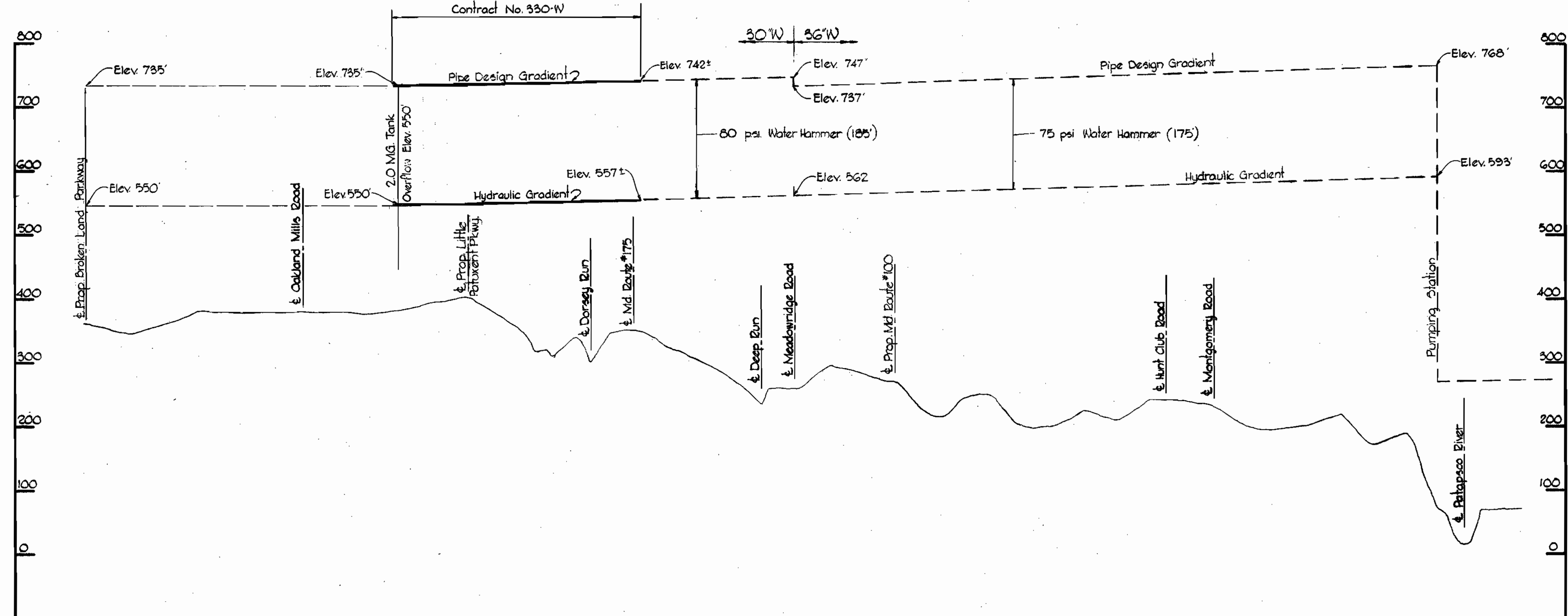
WS 330-W/1

WS 330-W/1



LOCATION PLAN

Scale: 1"=2000'



PROFILE

Scale: H: 1"=2000' V: 1"=100'

Stakeout and Diary F-18-6679

Project No. 26 Section No. 1 Contract No. 330-W



Kenneth A. McCord

WHITMAN, REQUARDT & ASSOCIATES ENGINEERS 1304 ST. PAUL ST. BALTIMORE, MARYLAND	DEPARTMENT OF PUBLIC WORKS HOWARD COUNTY, MARYLAND Dec 12 1969 <i>W. O. Libert</i> CHIEF-BUREAU OF WATER AND SEWER	CONTRACT NO. 330-W	LOCATION PLAN AND HYDRAULIC GRADIENT	ELECTION DISTRICT GUILFORD NO. 6	DRAWING NO. 1 OF 8 SCALE AS SHOWN
--	---	---------------------------	---	---	--

W. O. 6185-2

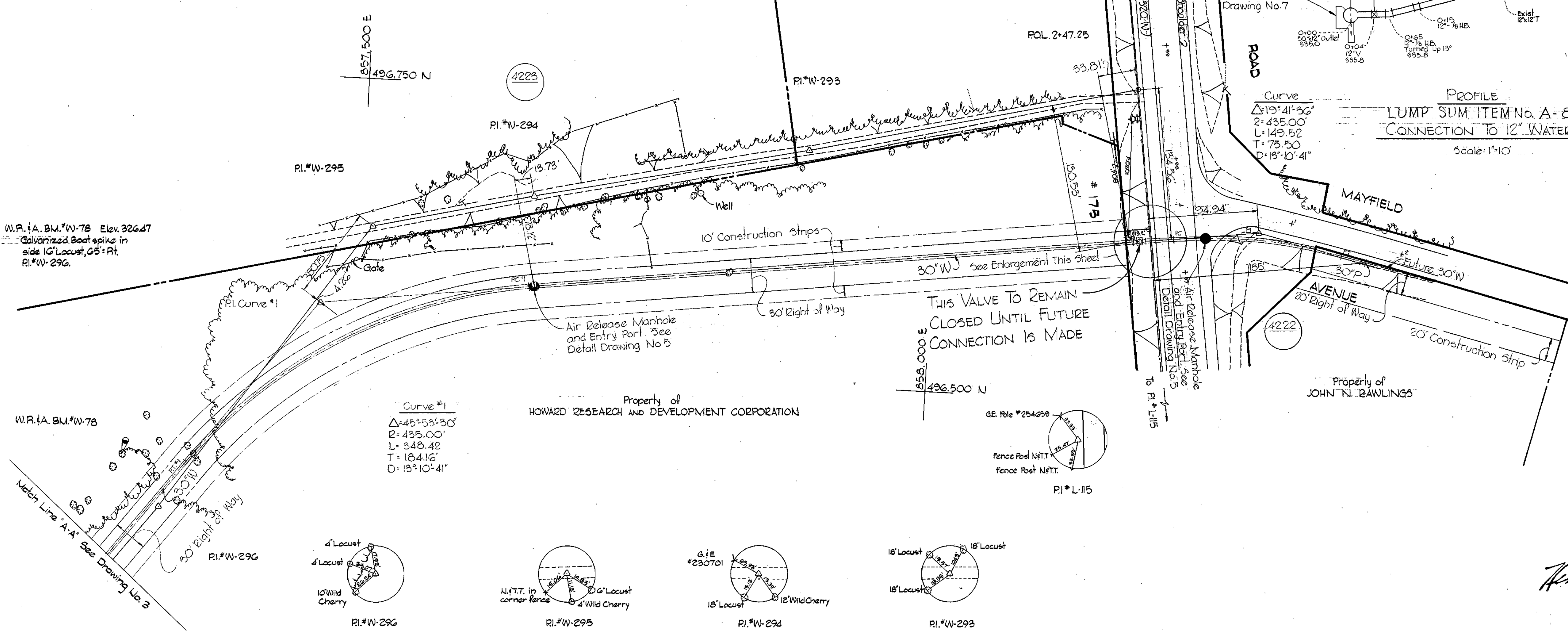
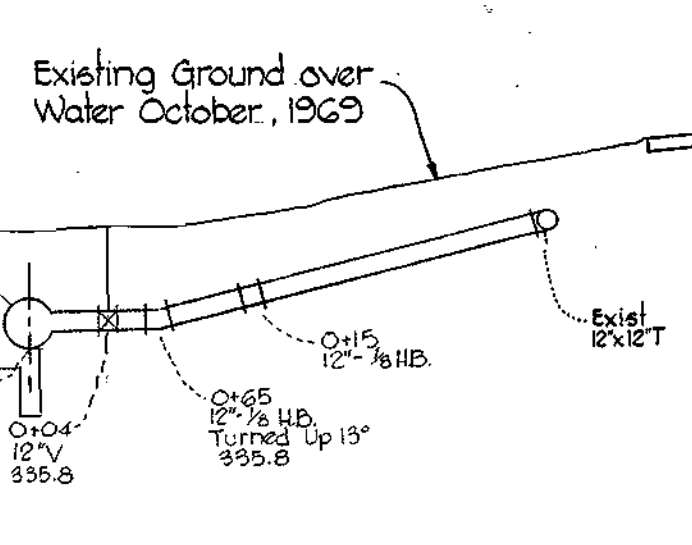
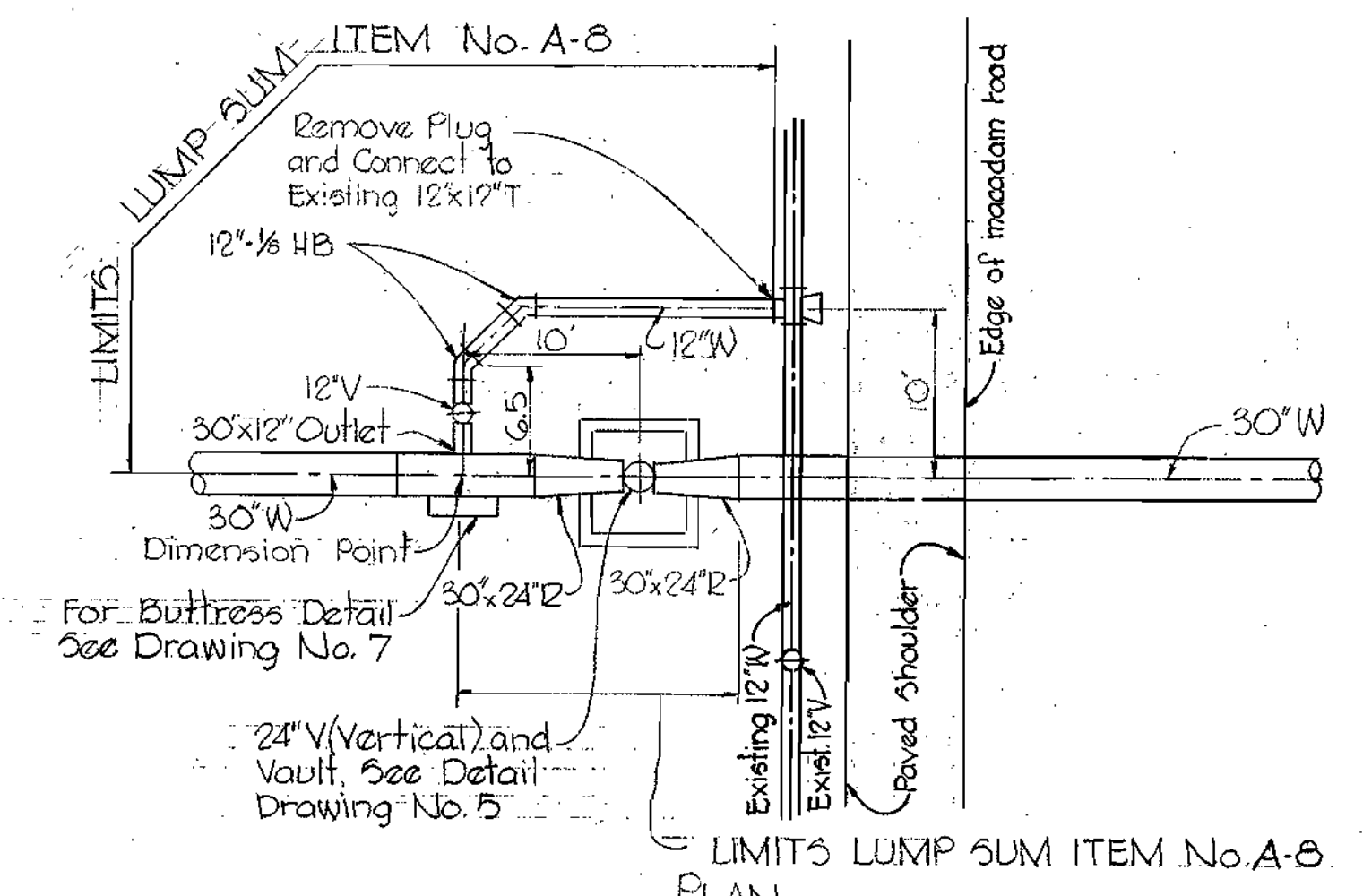
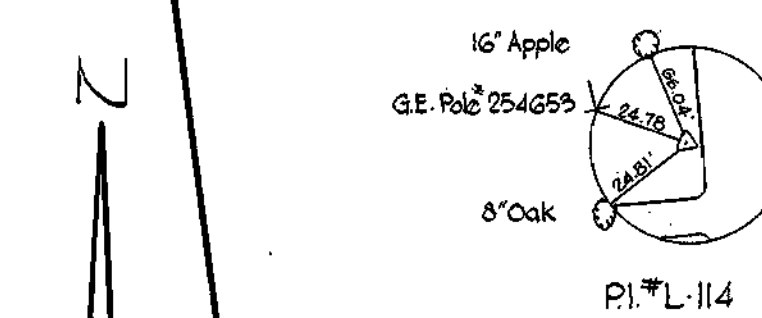
AS BUILT Aug 23, 1971

WS 330-W/1

GENERAL NOTES

1. Approximate location of existing mains are shown. The Contractor shall take all necessary precautions to protect existing mains and services and maintain uninterrupted supply. Any damage incurred shall be repaired immediately.
2. All pipe elevations shown are invert elevations.
3. The Contractor shall locate existing utilities a minimum of two weeks in advance of construction operations in vicinity of utilities.
4. For all standard details see standards bound in Specifications.
5. Block all fittings with concrete, see standards bound in Specifications.
6. Vertical and horizontal controls are in State Datum.
7. All pipe shall be ductile iron or concrete.

Maps Bl. A-III Elev. 349.62
 GO penny spike in G.I.E. pole 254653
 West side of Md. Rt. 175, 1.9 miles south
 of Md. Rt. 108. Bl. is 0.7 miles south
 of the Waterloo Elementary School and
 1.27 above ground.



W.P. & A. B.M. #W-78 Elev. 326.47
 Galvanized Boat spike in
 side 10' Locust, 65' Rt.
 PI * W-296.

Curve #1
 $\Delta = 45^{\circ} 53' 30''$
 $R = 435.00'$
 $L = 348.42'$
 $T = 184.16'$
 $D = 13^{\circ} 10' 41''$

W.P. & A. B.M. #W-78

Watch Line 'A-A' See Drawing No. 3

WHITMAN, REQUARDT & ASSOCIATES
 ENGINEERS
 1304 ST. PAUL ST.
 BALTIMORE, MARYLAND

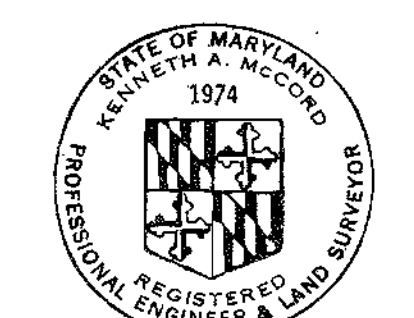
DEPARTMENT OF PUBLIC WORKS
 HOWARD COUNTY, MARYLAND
 11-21-69
 DATE
 W. O. Falwell
 CHIEF-BUREAU OF WATER AND SEWER

CONTRACT NO. 330-W

PLAN OF WATER MAINS

ELECTION DISTRICT GUILFORD NO. 6

DRAWING NO. 2 OF 8 **SCALE AS SHOWN**



Kenneth A. McLeod

Project No. 26 - Section No. 1
 Contract No. 330-W

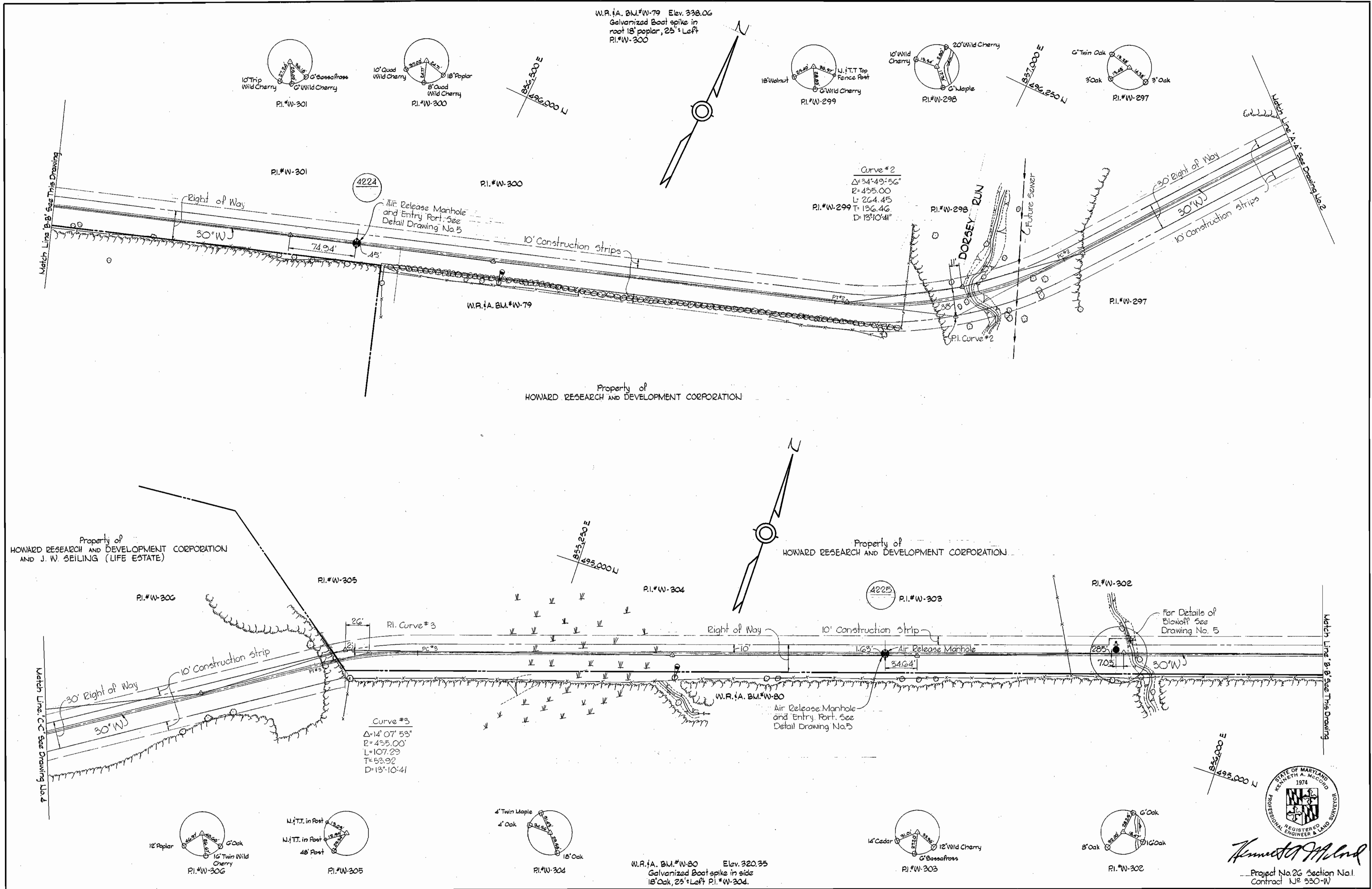
AS BUILT FB #4486, 4432 Aug 23, 1971

WS 330-W/2

WS 330-W/3

Suspense

Suspense



WHITMAN, REQUARDT & ASSOCIATES
 ENGINEERS
 1304 ST. PAUL ST.
 BALTIMORE, MARYLAND

DEPARTMENT OF PUBLIC WORKS
 HOWARD COUNTY, MARYLAND
 11-21-69
 DATE
W. O. Falbit
 CHIEF-BUREAU OF WATER AND SEWER

CONTRACT NO. 330-W

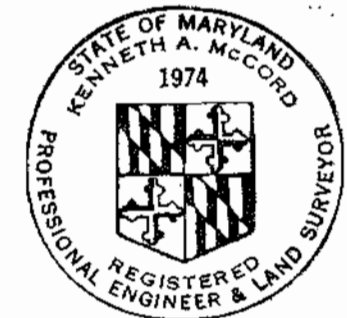
PLAN OF WATER MAINS

ELECTION DISTRICT GUILFORD NO. 6

DRAWING NO. 3 OF 8 **SCALE 1" = 50'**

495-489
495-490
495-490

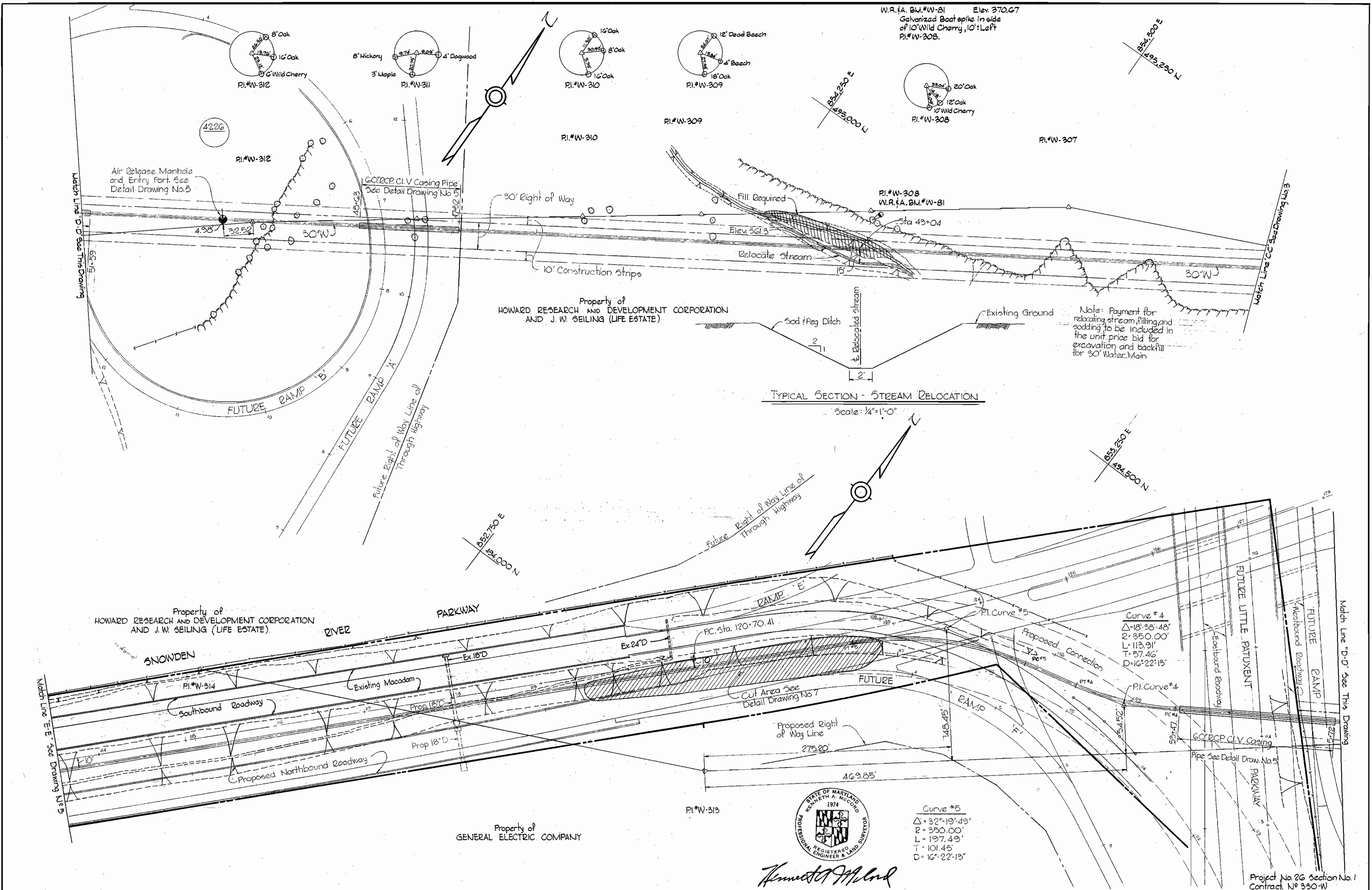
W. O. 6185-2 AS BUILT FB# 418C, 4512 Aug 23, 1971



Kenneth A. McCord
 Project No. 26 Section No. 1
 Contract No. 330-W

WS 330-W/4

suspense x suspense x



WHITMAN, REQUARDT & ASSOCIATES ENGINEERS 1304 ST. PAUL ST. BALTIMORE, MARYLAND	DEPARTMENT OF PUBLIC WORKS HOWARD COUNTY, MARYLAND DATE 11-21-69 <i>W. O. P. Bell</i> CHIEF - BUREAU OF WATER AND SEWER	CONTRACT NO. 330-W	PLAN OF WATER MAINS	ELECTION DISTRICT GUILFORD NO. 6	DRAWING NO. 4 OF 8 SCALE AS SHOWN AS BUILT Aug 23, 1971
---	---	--------------------	------------------------	-------------------------------------	---

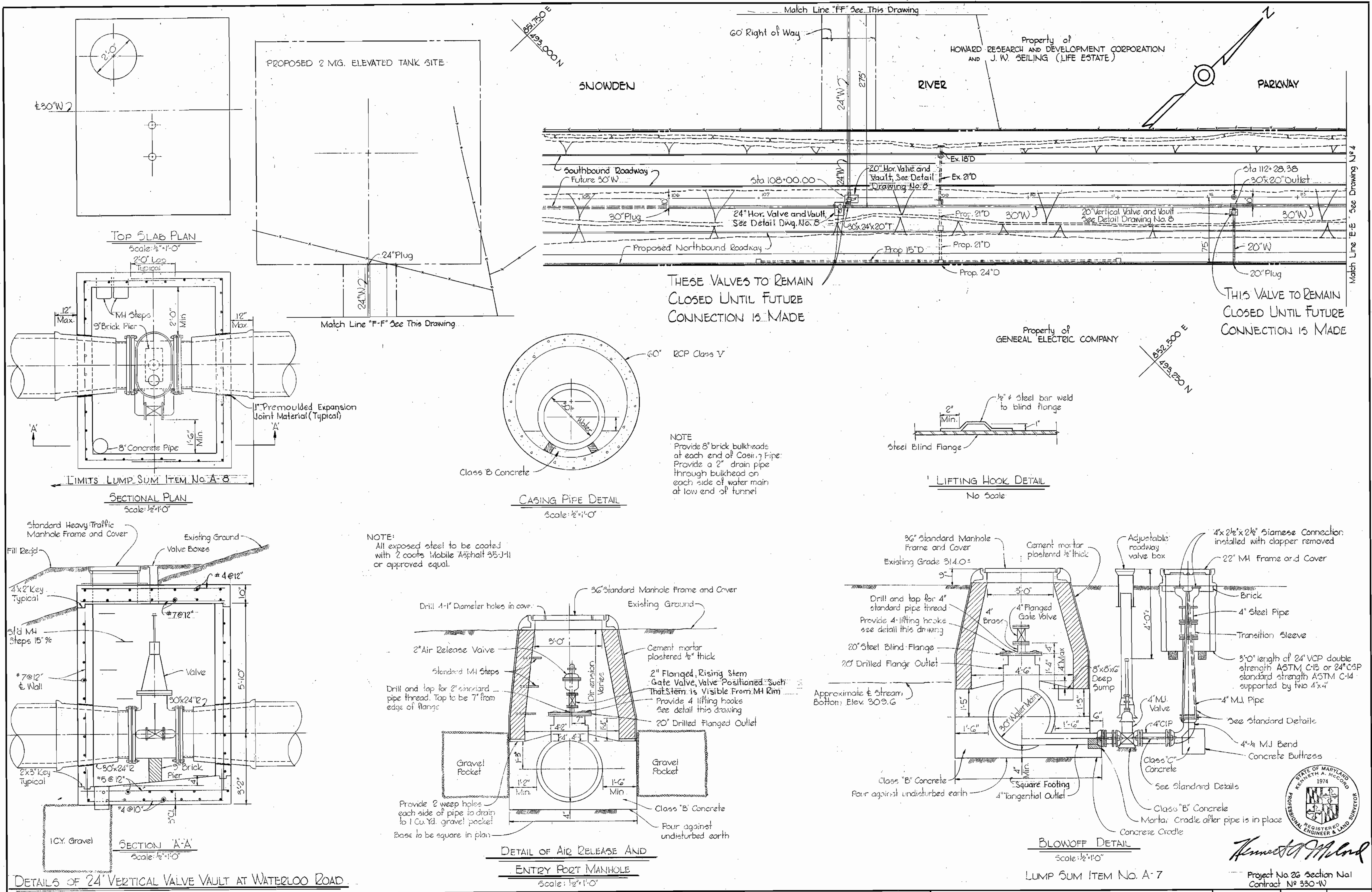
W. O. 6185-2

Project No. 26 Section No. 1
Contract No. 330-W

WS 330-W/5

superior

superior

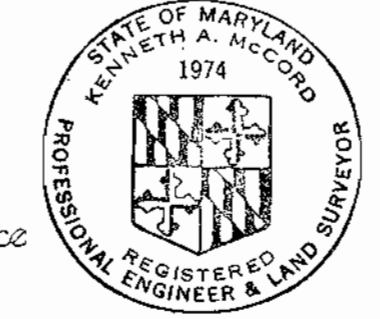


THESE VALVES TO REMAIN CLOSED UNTIL FUTURE CONNECTION IS MADE

THIS VALVE TO REMAIN CLOSED UNTIL FUTURE CONNECTION IS MADE

NOTE: All exposed steel to be coated with 2 coats Mobile Asphalt 35-J-11 or approved equal.

NOTE: Provide 8" brick bulkheads at each end of casing pipe. Provide a 2" drain pipe through bulkhead on each side of water main at low end of tunnel.



Kenneth A. McLeod

WHITMAN, REQUARDT & ASSOCIATES ENGINEERS 1304 ST. PAUL ST. BALTIMORE, MARYLAND	DEPARTMENT OF PUBLIC WORKS HOWARD COUNTY, MARYLAND 11-21-69 DATE	CONTRACT NO. 330-W CHIEF-BUREAU OF WATER AND SEWER	PLAN AND DETAILS OF WATER MAINS	ELECTION DISTRICT GUILFORD NO. 6	DRAWING NO. 5 OF 8 SCALE AS SHOWN AS BUILT Aug. 23, 1971
---	---	---	------------------------------------	-------------------------------------	--

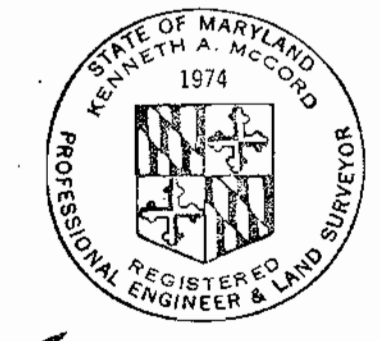
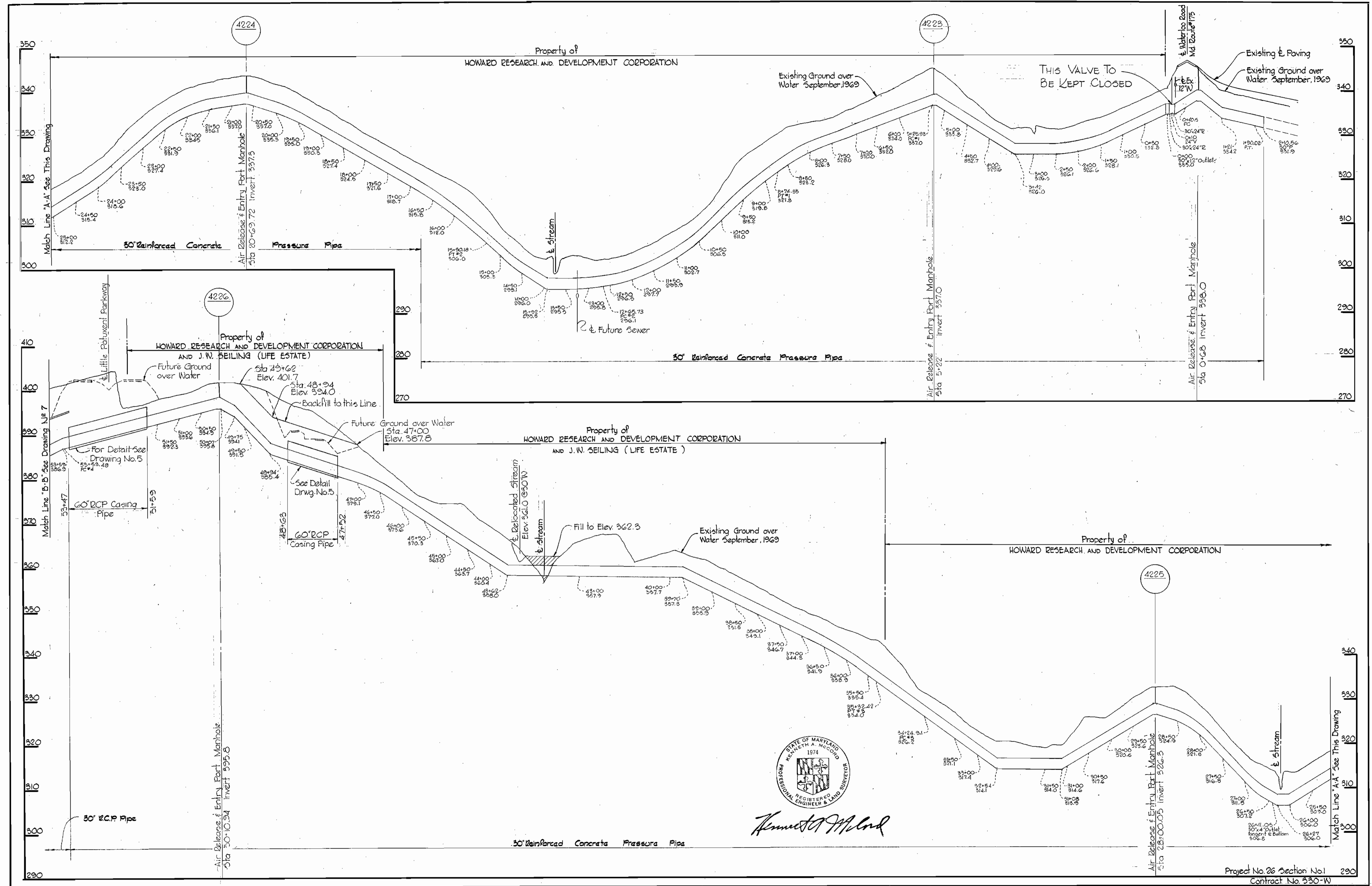
W. O. 6185-2

WS 330-W/6

suspense

suspense

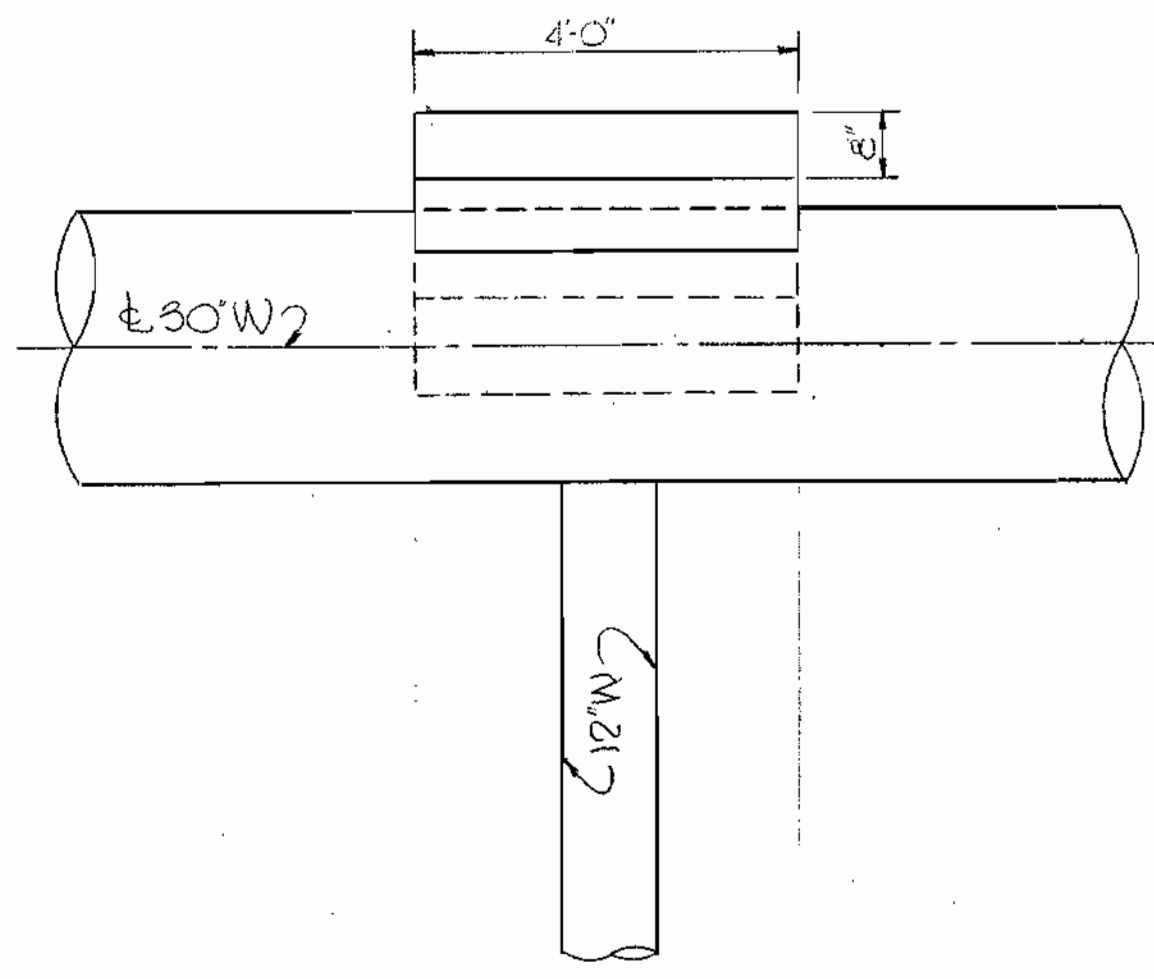
suspense



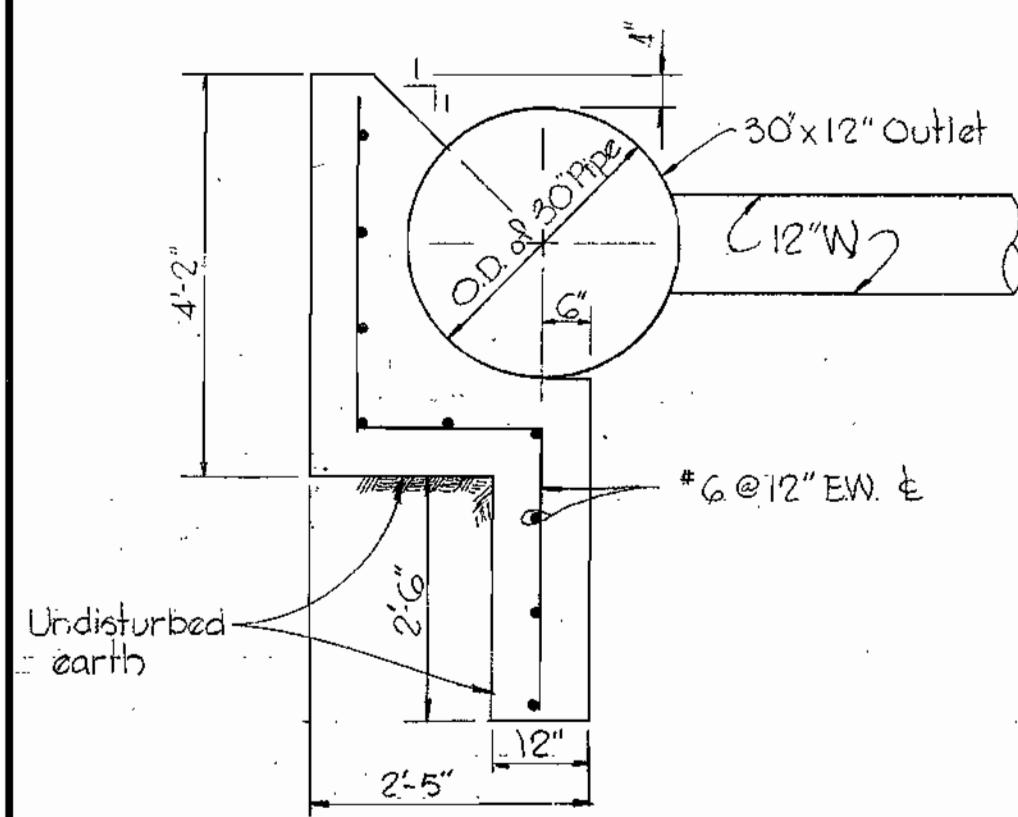
Kenneth A. McCord

WHITMAN, REQUARDT & ASSOCIATES ENGINEERS 1304 ST. PAUL ST. BALTIMORE, MARYLAND	DEPARTMENT OF PUBLIC WORKS HOWARD COUNTY, MARYLAND 11-21-69 <i>W. O. Gilbert</i> CHIEF-BUREAU OF WATER AND SEWER	CONTRACT NO. 330-W	PROFILES OF WATER MAINS	ELECTION DISTRICT GUILFORD NO. 6	DRAWING NO. 6 OF 8 SCALE H:V = 100' : 10' AS BUILT Aug 23, 1971
---	--	--------------------	----------------------------	-------------------------------------	---

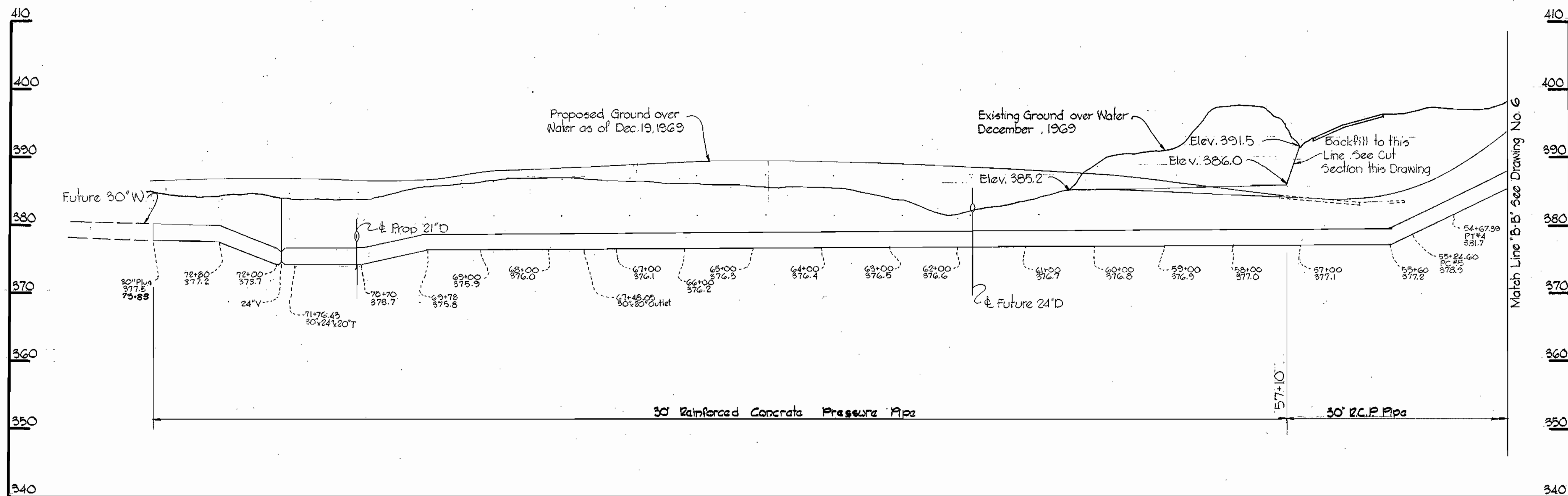
W. O. Gilbert



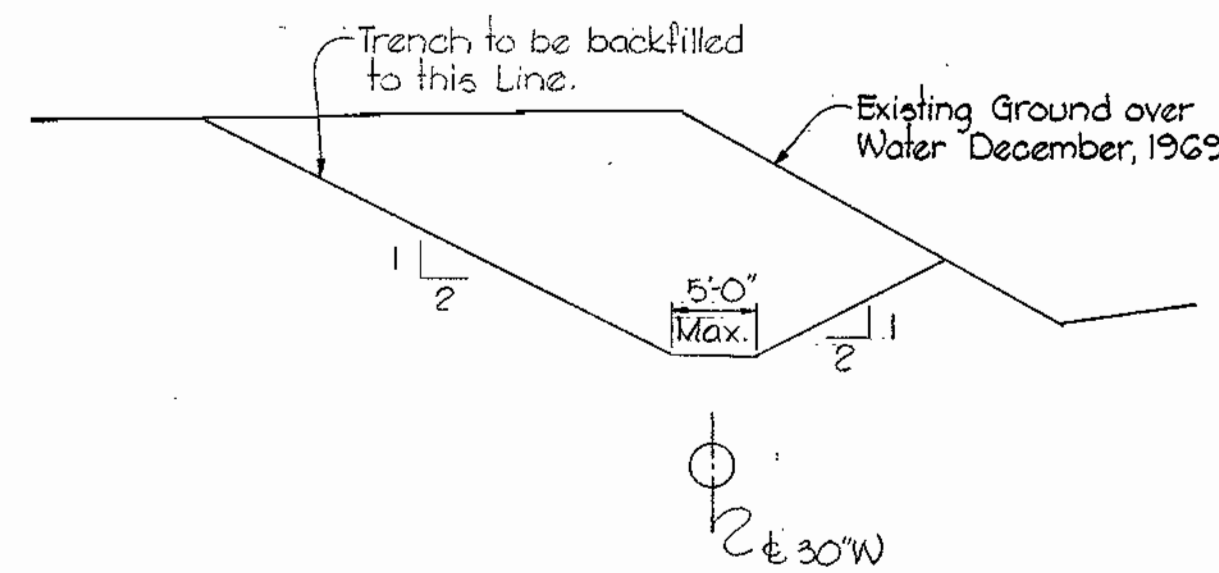
PLAN
Scale: 1/2" = 1'-0"



SECTION 'A-A'
Scale: 1/2" = 1'-0"
SPECIAL BUTTRESS
30x12" OUTLET
STA. 0+00

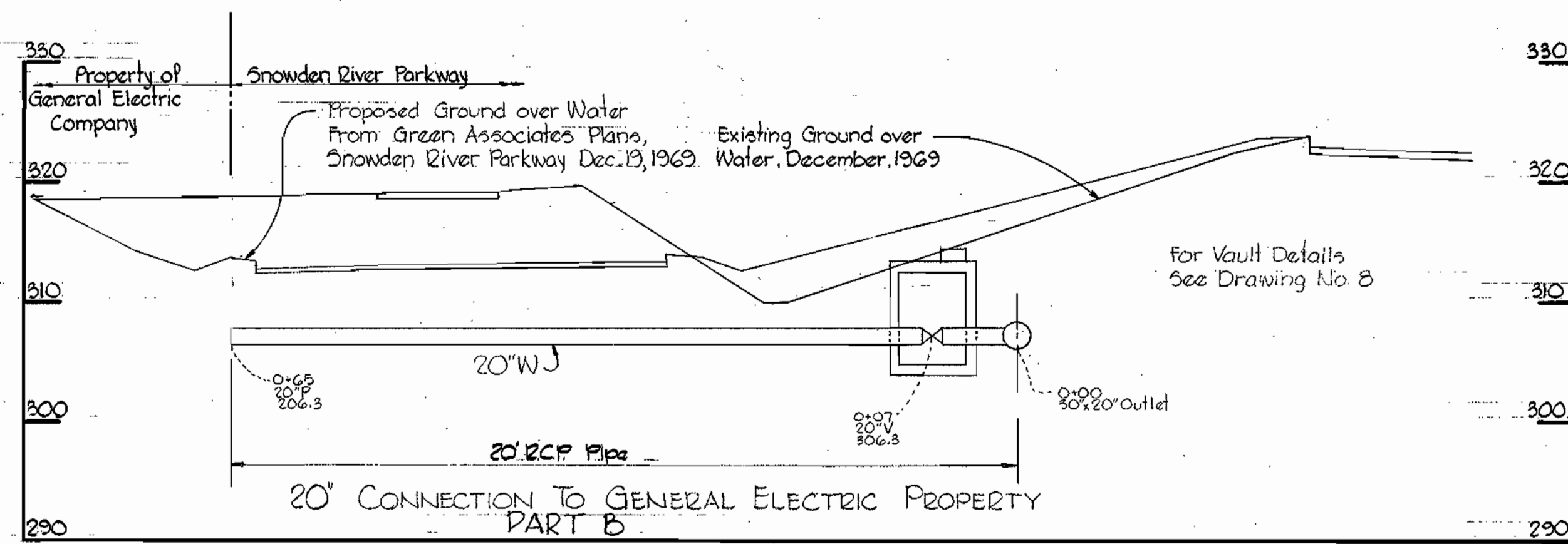


PROFILE
Scale: H: 1" = 100'
V: 1" = 10'

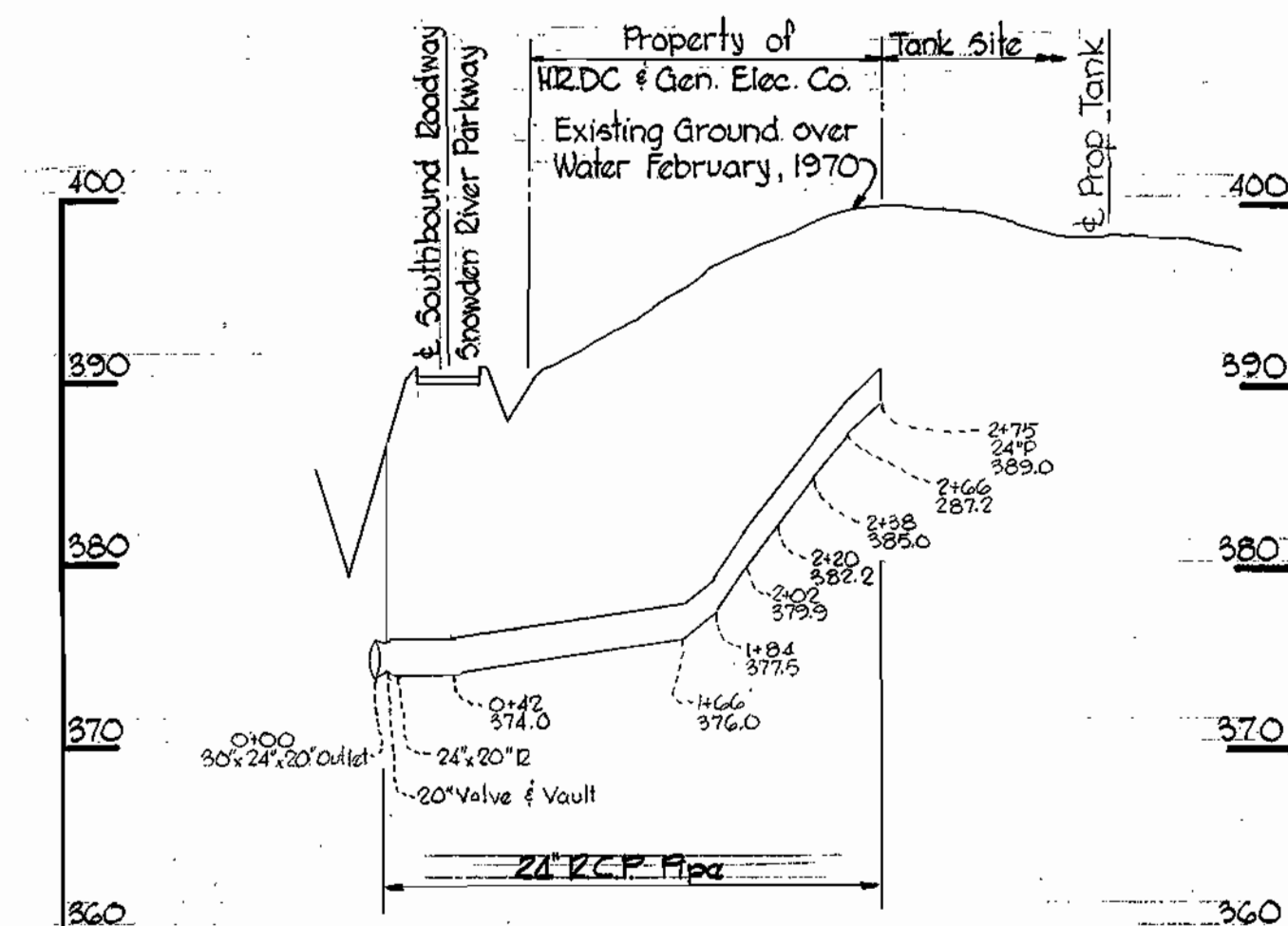


TYPICAL CUT SECTION
No Scale

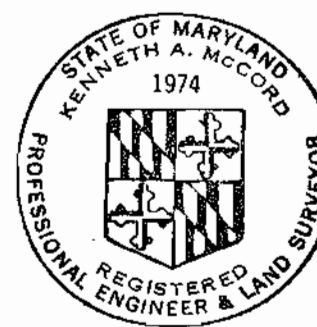
STA 57+10 TO STA 60+50



PROFILE
Scale: H: 1" = 100'
V: 1" = 10'



PROFILE
Scale: H: 1" = 100'
V: 1" = 10'



Kenneth A. McLeod

WHITMAN, REQUARDT & ASSOCIATES ENGINEERS 1304 ST. PAUL ST. BALTIMORE, MARYLAND	DEPARTMENT OF PUBLIC WORKS HOWARD COUNTY, MARYLAND DATE: 11-21-69 <i>W. O. Falwell</i> CHIEF-BUREAU OF WATER AND SEWER	CONTRACT NO. 330-W	PROFILES OF WATER MAINS	ELECTION DISTRICT GUILFORD NO. 6	DRAWING NO. 7 OF 8 SCALE AS SHOWN
---	--	--------------------	----------------------------	-------------------------------------	--------------------------------------

W. O. 6185-2

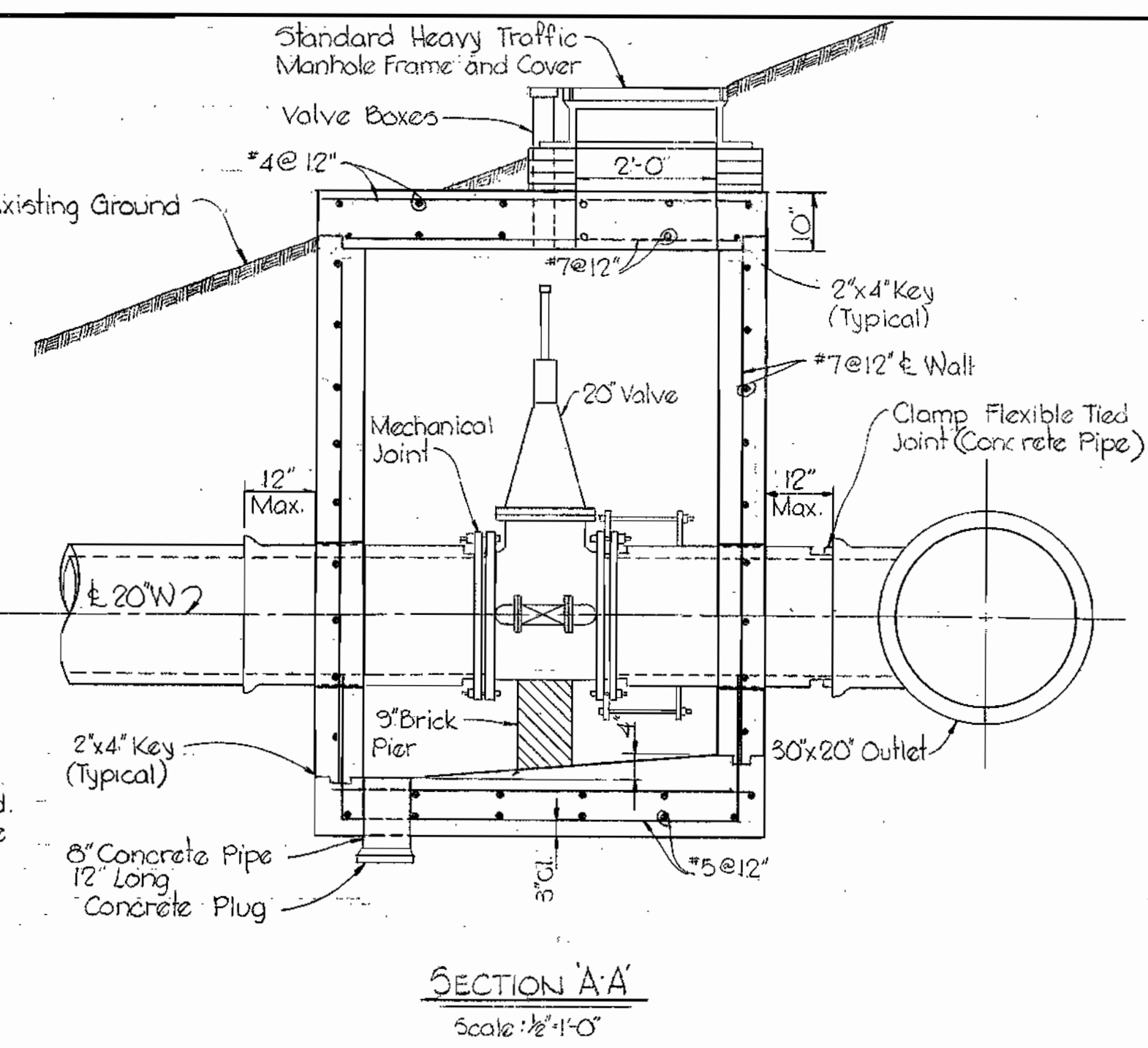
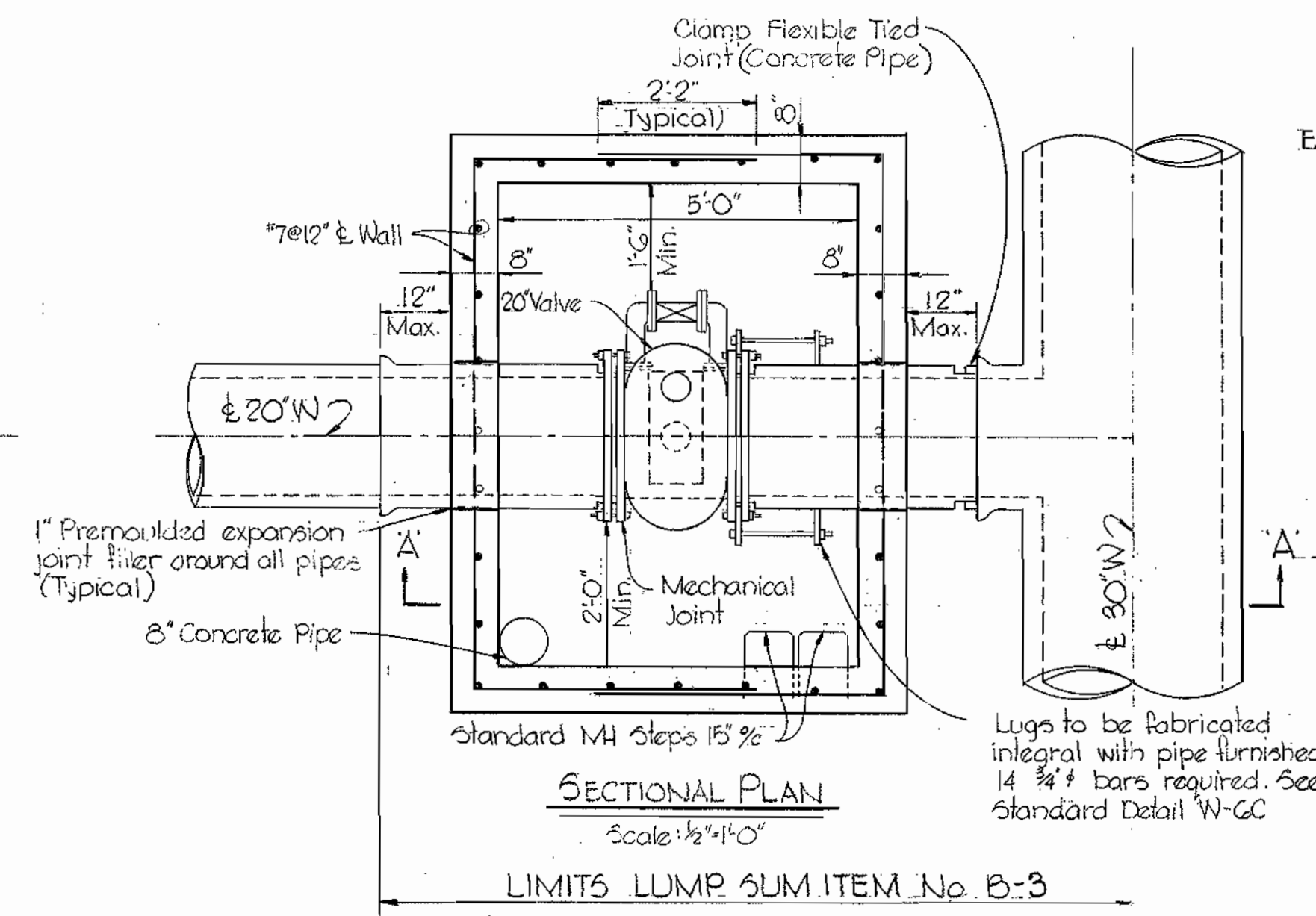
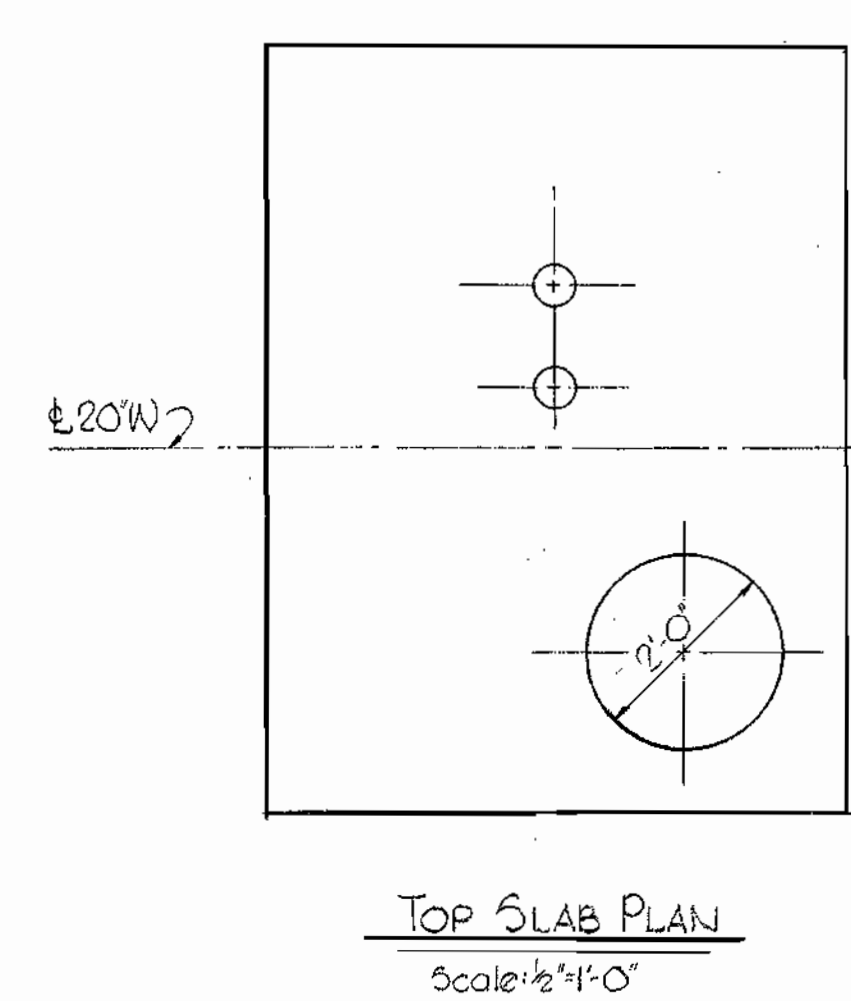
AS BUILT Aug 23, 1971

WS 330-W/7

super

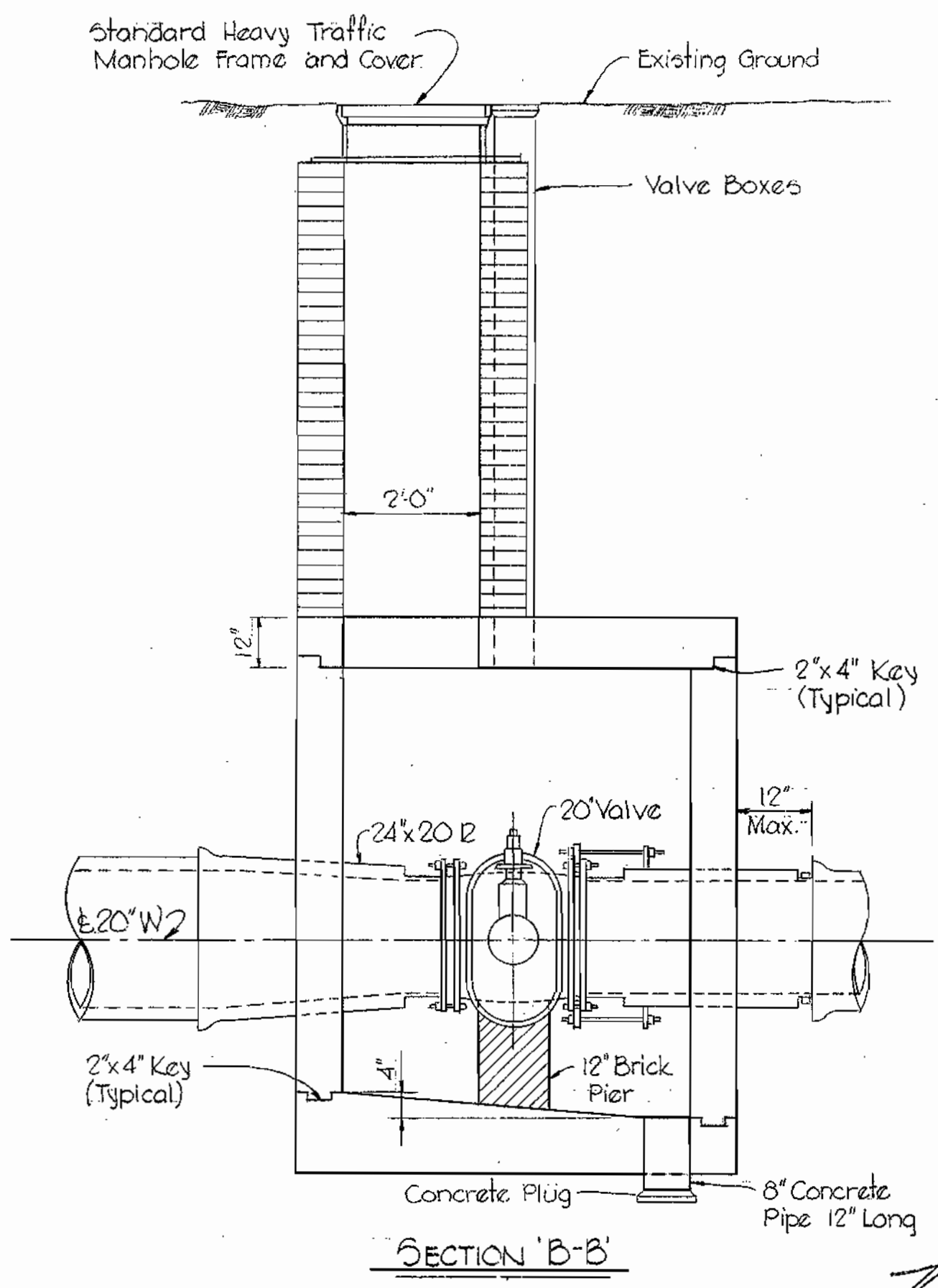
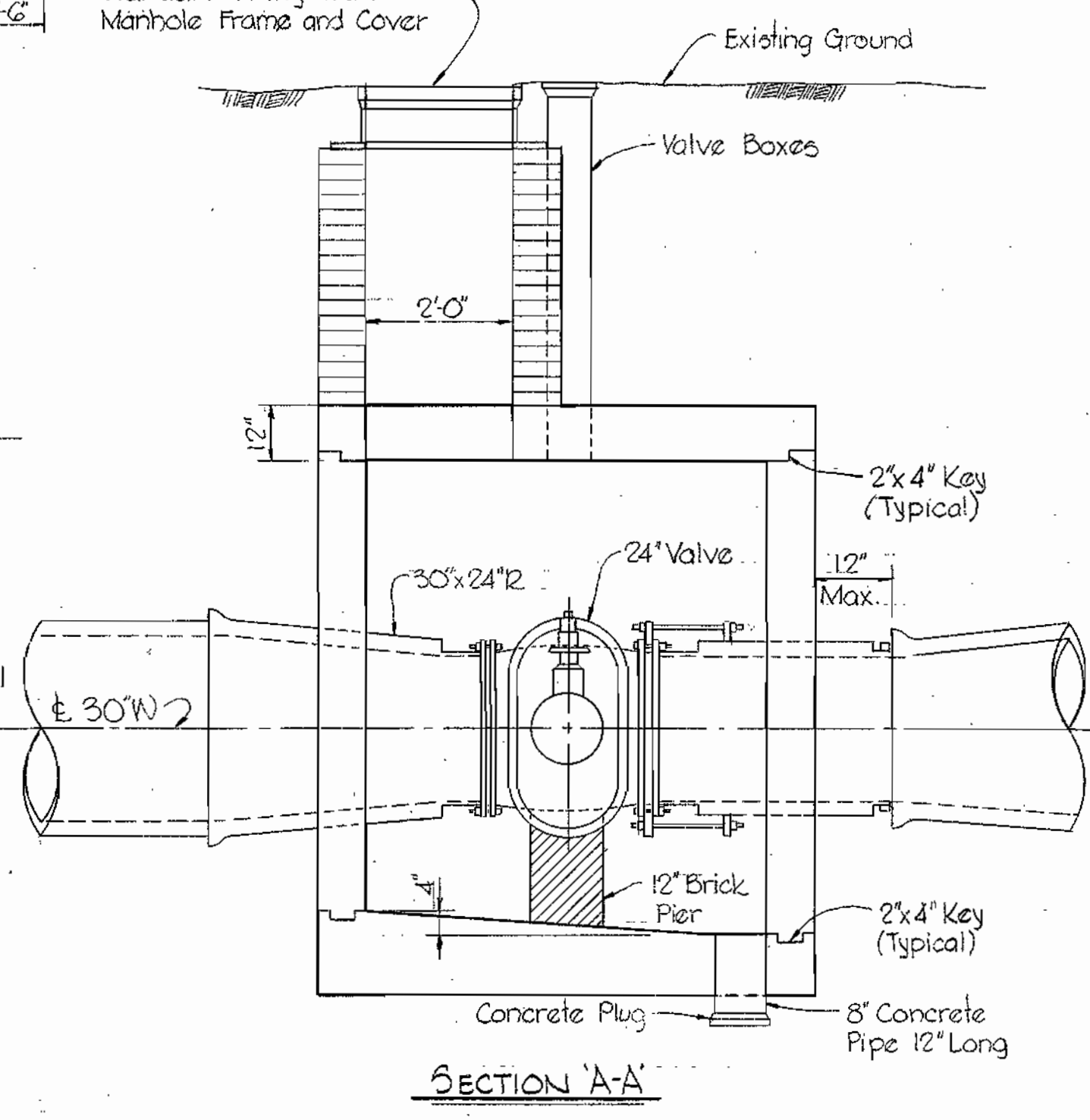
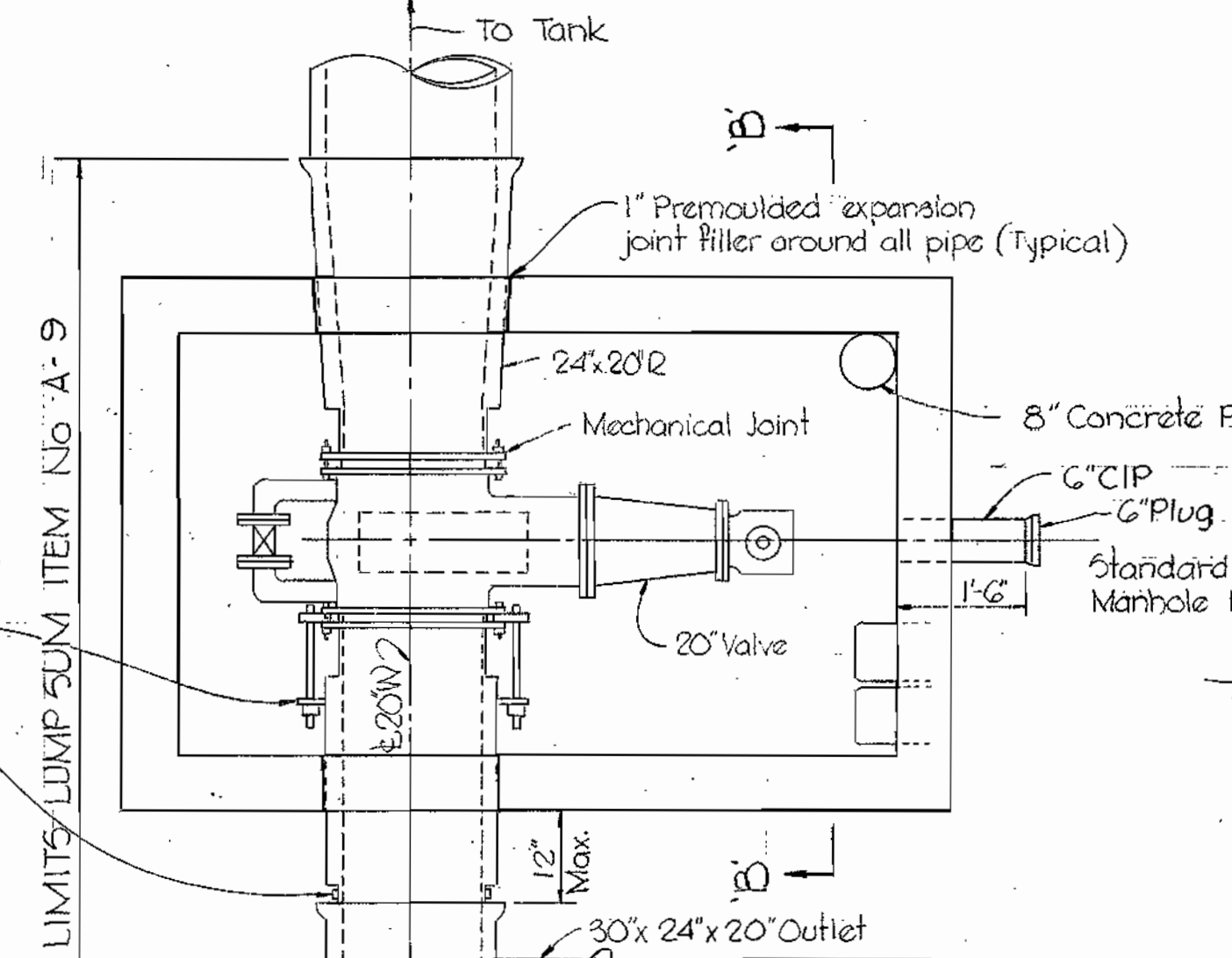
super

super



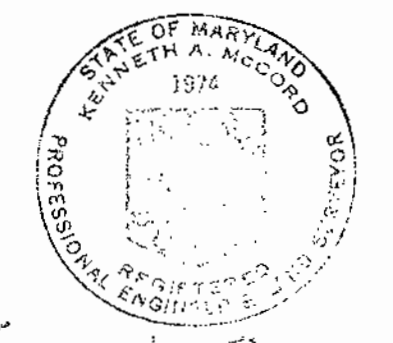
- NOTES:
1. If Ductile Iron Pipe is used, the strapping method shall be approved by the Engineer.
 2. Piping subjected to stresses resulting from strapping shall be designed for a horizontal thrust of 110,000 lbs.
 3. All concrete for the vaults shall be Class A.

DETAILS OF 20" VALVE TO G.E.



FOR VAULT DIMENSIONS AND REINFORCING SEE STANDARD DETAIL W-21

HORIZONTAL VALVE VAULT DETAILS



Kenneth A. McCord

Project No. 26 Section No. 1
Contract No. 330-W

WHITMAN, REQUARDT & ASSOCIATES
ENGINEERS
1304 ST. PAUL ST.
BALTIMORE, MARYLAND

DEPARTMENT OF PUBLIC WORKS
HOWARD COUNTY, MARYLAND
2-24-70
DATE

CONTRACT NO. 330-W

DETAILS OF
WATER MAINS

ELECTION DISTRICT
GUILFORD NO. 6

DRAWING NO. 8
OF 8
SCALE AS SHOWN

W. O. G185-2

AS BUILT Aug 23, 1971

WS 330-W/8