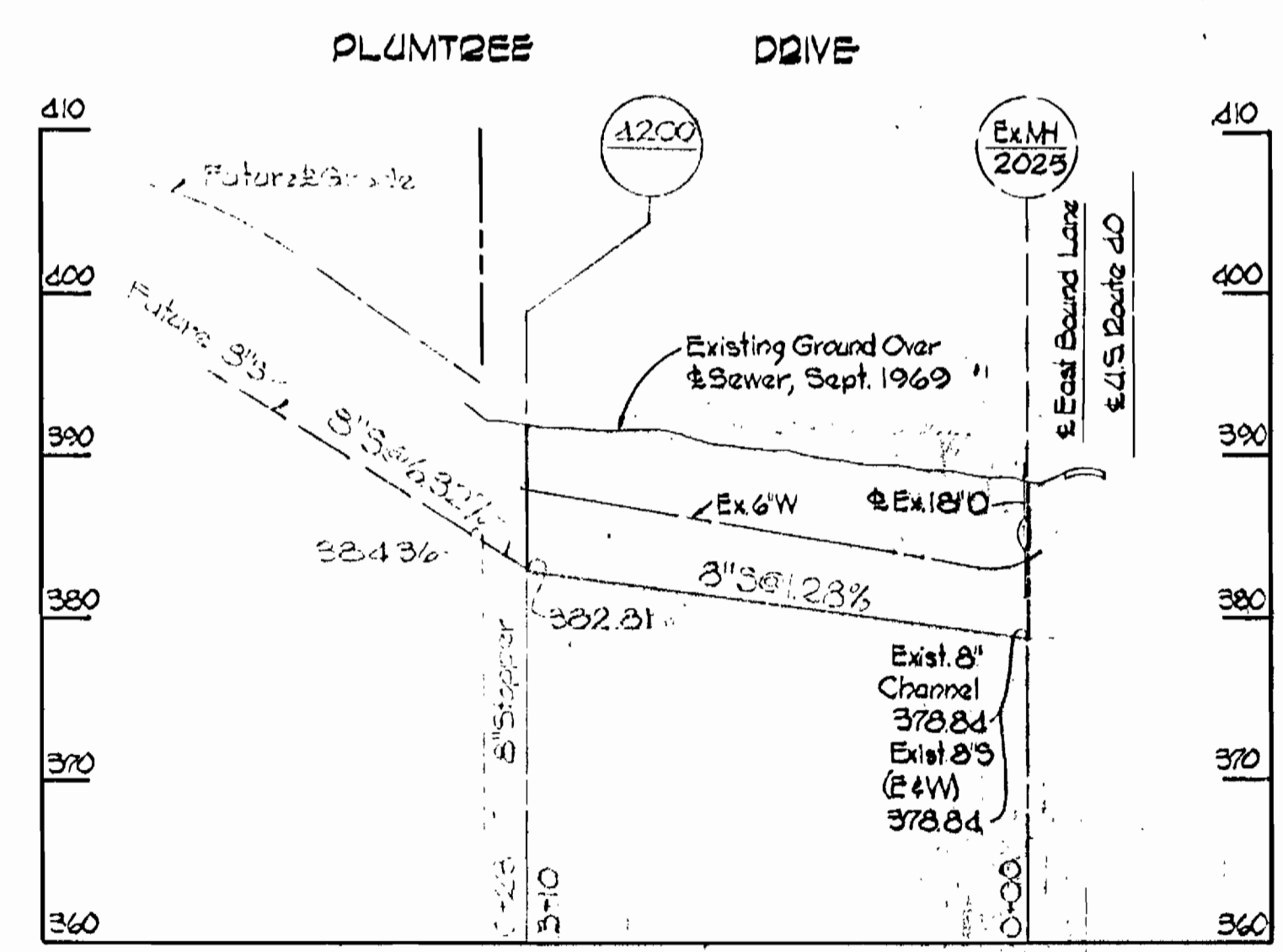
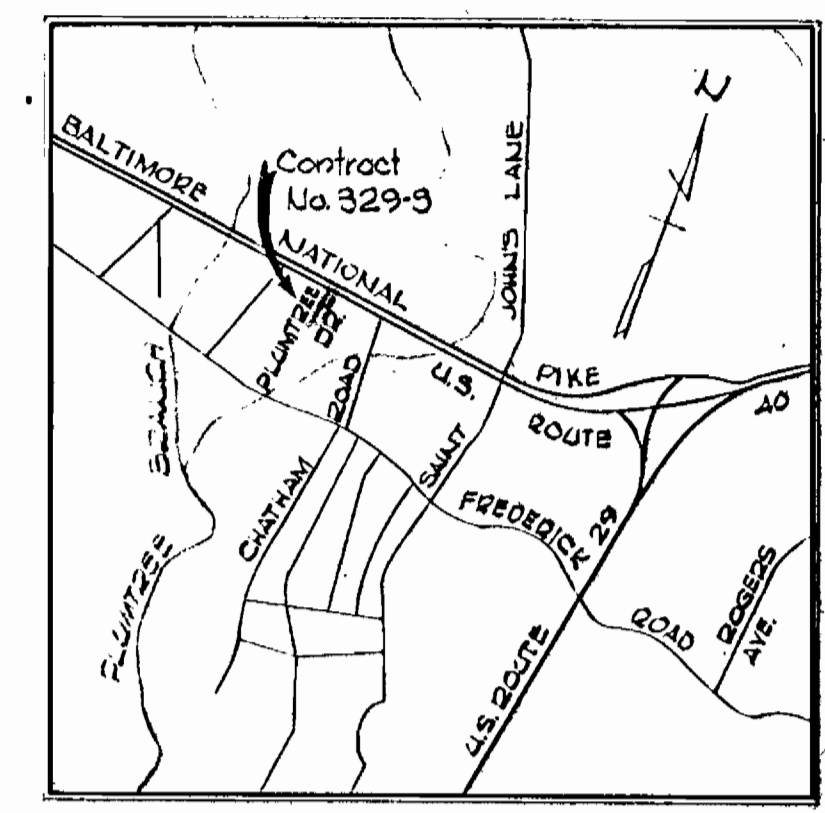


PLAN
Scale: 1"=30'



PROFILE
Scale: H: 1"=100'
V: 1"=10'

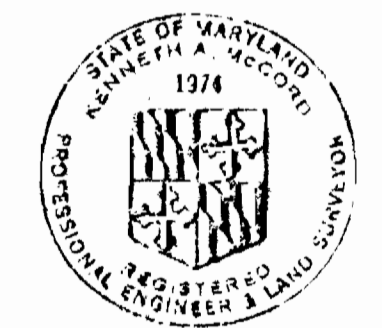


VICINITY MAP
Scale: 1"= 1/2 Mile

GENERAL NOTES

1. Approximate location of existing mains are shown. The Contractor shall take all necessary precautions to protect existing mains and services and maintain uninterrupted supply. Any damage incurred shall be repaired immediately.
2. All pipe elevations shown are invert elevations.
3. The Contractor shall locate existing utilities a minimum of two weeks in advance of construction operations in vicinity of utilities.
4. For all standard details see standards bound in Specifications.
5. Clear all utilities by a minimum of 6', clear all poles by 2'-0" minimum or tunnel as required.
6. The contractor shall provide a joint in all sewer mains within 2'-0" of exterior manhole walls.
7. All horizontal and vertical controls are based on Howard County Datum.

QUANTITIES	
Item	Quantity
8" Sewer	330 L.F.



Kenneth A. McLeod

Plumtree Drive
Contract # 329-S

WHITMAN, REQUARDT & ASSOCIATES ENGINEERS 1304 ST. PAUL ST. BALTIMORE, MARYLAND	DEPARTMENT OF PUBLIC WORKS HOWARD COUNTY, MARYLAND 10-9-69 <i>W. O. Felbert</i> CHIEF - BUREAU OF WATER AND SEWER	CONTRACT NO. 329-S	PLAN AND PROFILE SEWER MAINS	ELECTION DISTRICT ELLICOTT CITY NO. 2	DRAWING NO. 1	SCALE AS SHOWN
					OF 1	OF 1