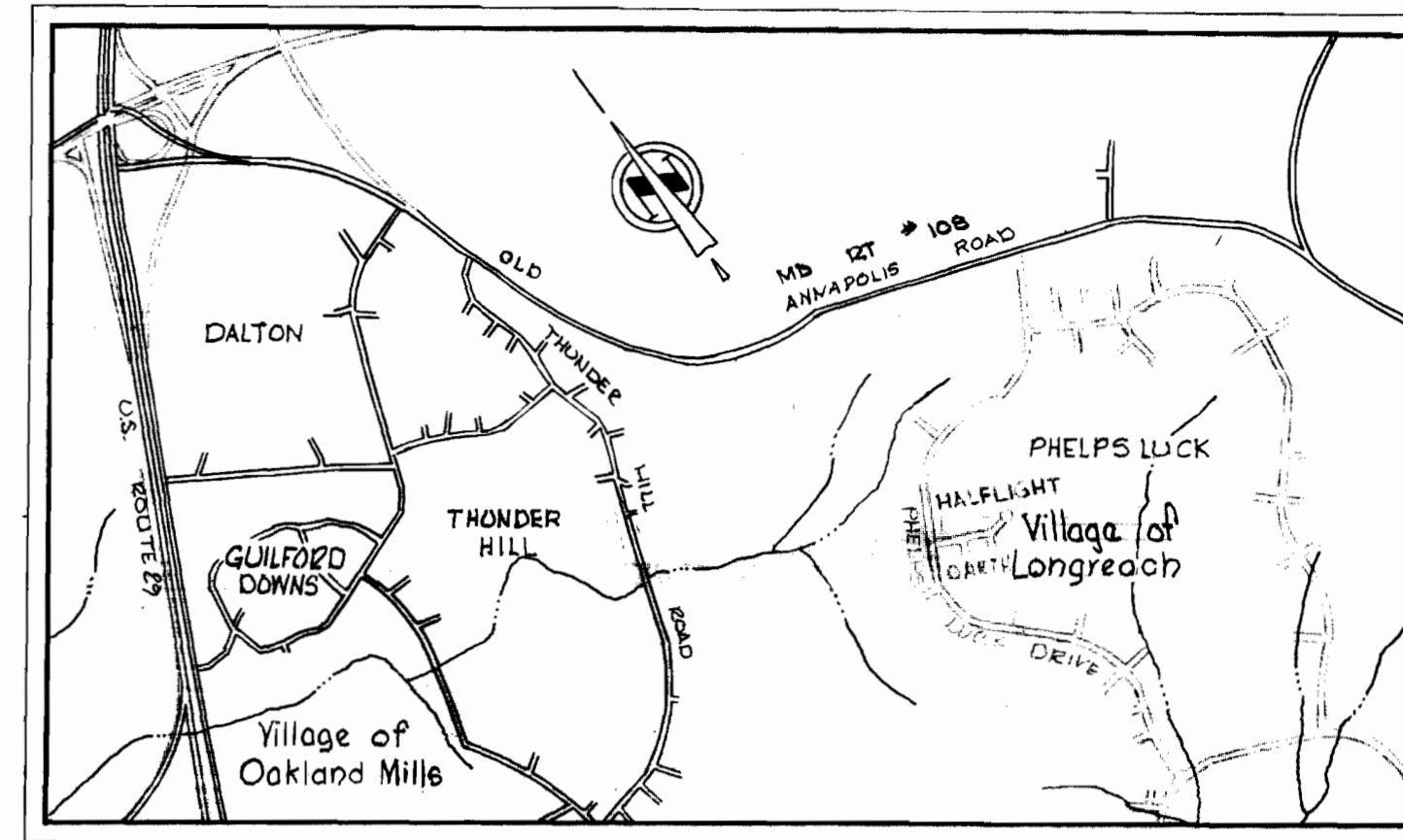


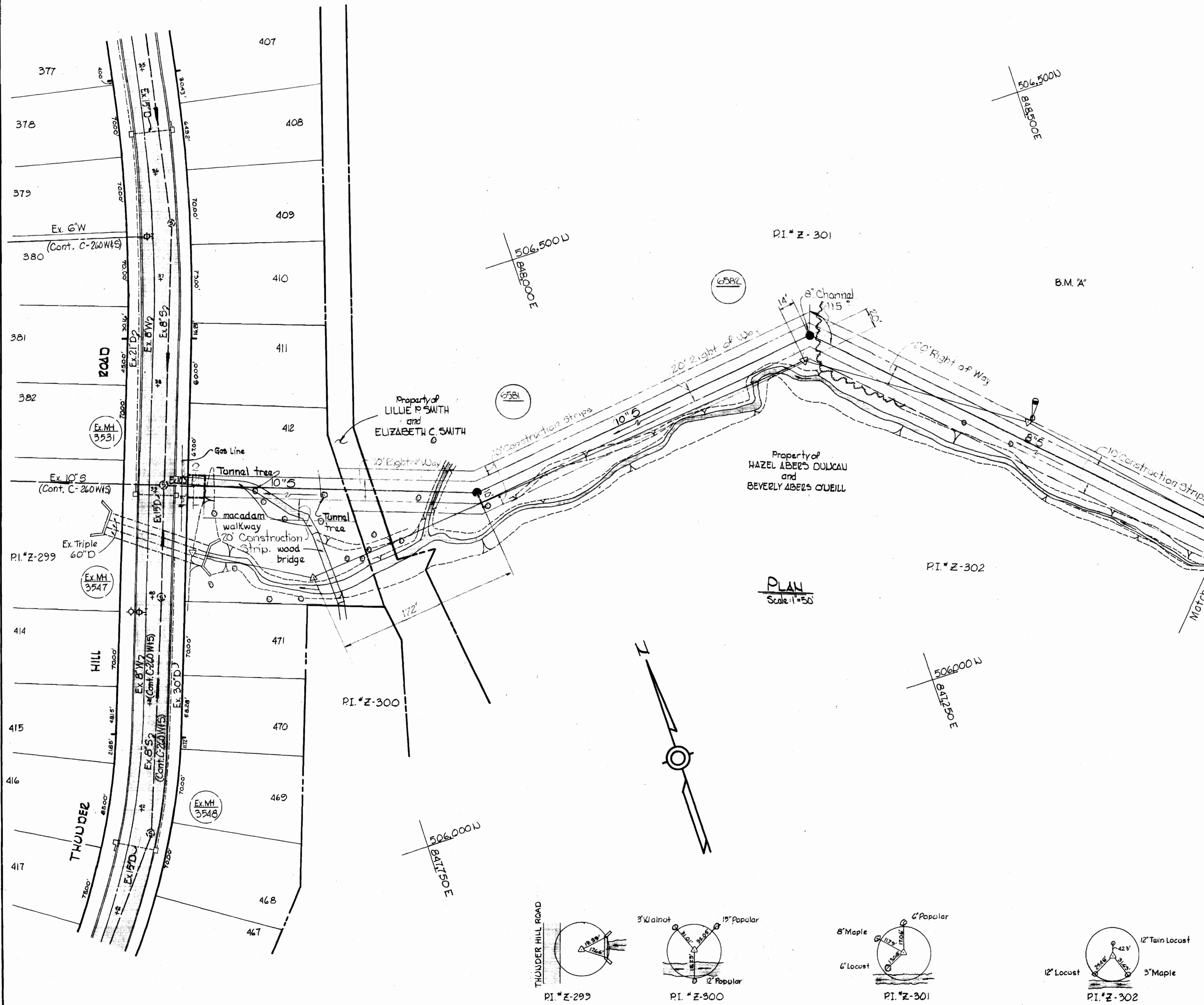
W.R. & A. B.M. 'A' Elev. 300.45  
 Spike base 12" Twin Locust 5' Left  
 of P.I. Z-302 (Marked with guard).



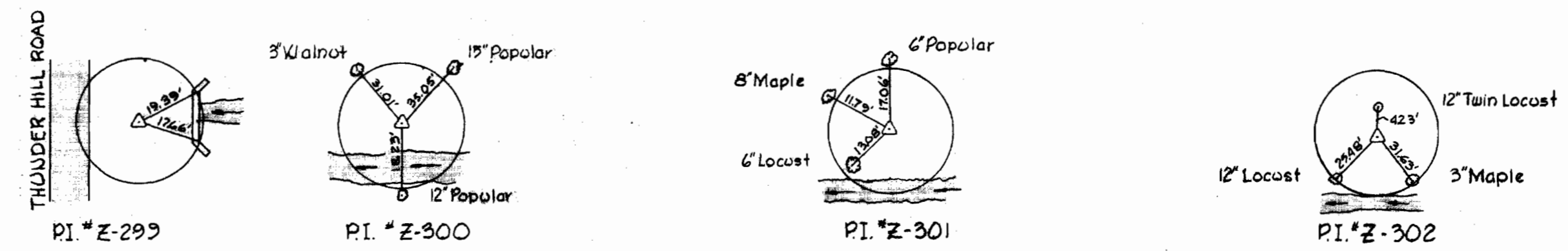
VICINITY MAP  
 Scale 1"=1600'

GENERAL NOTES

1. Approximate location of existing mains are shown. The Contractor shall take all necessary precautions to protect existing mains and services and maintain uninterrupted supply. Any damage incurred shall be repaired immediately.
2. All pipe elevations shown are invert elevations.
3. The Contractor shall locate existing utilities a minimum of two weeks in advance of construction operations in vicinity of utilities.
4. For all standard details see standards bound in specifications.
5. Clear all utilities by a minimum of 6', Clear all poles by a minimum of 2'-0" or tunnel as required.
6. The Contractor shall provide a joint in all sewer mains within 2'-0" of exterior manhole walls.
7. All manholes shall be 4'-0" inside diameter.
8. All horizontal and vertical controls are based on Maryland State Datum.



PLAN  
 Scale 1"=50'



Stakeout & Diary in F.B. # 4930

Contract No. C-325-S



*Kenneth A. McLeod*

WHITMAN, REQUARDT & ASSOCIATES ENGINEERS 1304 ST. PAUL ST. BALTIMORE, MARYLAND	DEPARTMENT OF PUBLIC WORKS HOWARD COUNTY, MARYLAND DATE 1-4-71 <i>W. O. Pullwell</i> CHIEF-BUREAU OF WATER AND SEWER	CONTRACT NO. C-325-S	PLAN OF SEWER MAINS	COLUMBIA VILLAGE OF OAKLAND MILLS ELECTION DISTRICT GUILFORD NO. 6	DRAWING NO. 1	SCALE 1"=50'
					OF 2	305-486 306-485

WS 325-S/1

suspense

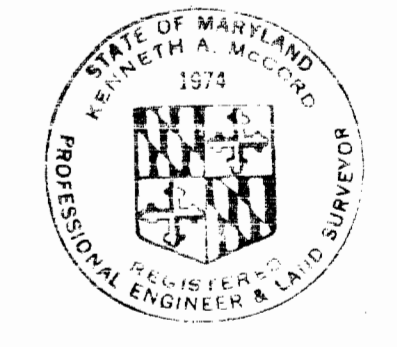
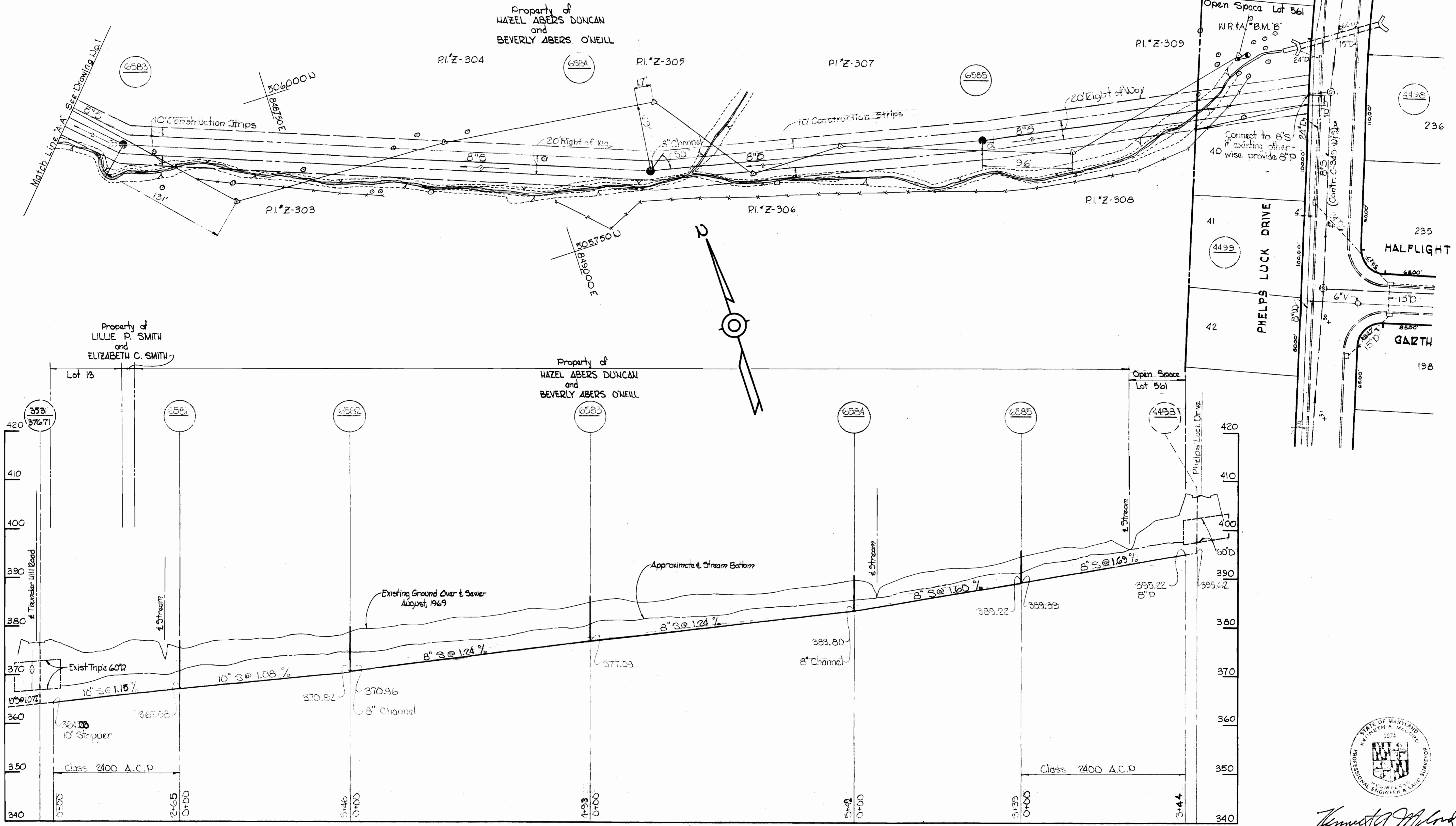
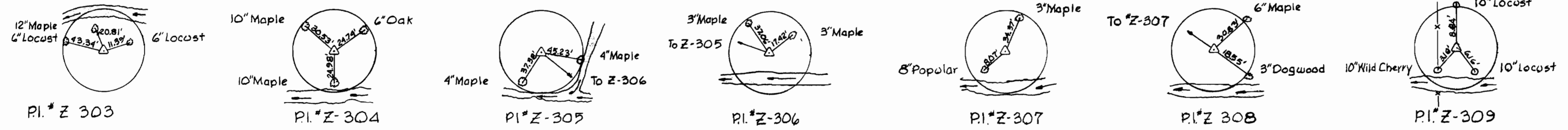
suspense

susp

susp

susp

W.R.#A. "BM" B Elev. 401.05  
Spike base 10" Wild Cherry 3"±  
Back of P.I.#Z-309 (Top Str. bk)



*Kenneth A. McCord*

Contract No. C-325-S

**WHITMAN, REQUARDT & ASSOCIATES**  
ENGINEERS  
1304 ST. PAUL ST.  
BALTIMORE, MARYLAND

DEPARTMENT OF PUBLIC WORKS  
HOWARD COUNTY, MARYLAND  
1-4-71  
*W. O. Filbert*  
CHIEF-BUREAU OF WATER AND SEWER

CONTRACT NO. C-325-S

PLAN AND PROFILE OF  
SEWER MAINS

COLUMBIA  
VILLAGE OF OAKLAND MILLS  
ELECTION DISTRICT GUILFORD NO. 6

DRAWING NO. 2 OF 2  
SCALE AS SHOWN

W. O. 6223-2

FB 4488

Aug 23, 1971

WS 325-S/2