

CONTRACT 321-S
GUILFORD INTERCEPTOR-SECTION 2
AND
GENERAL ELECTRIC INDUSTRIAL WASTE LINE
SECTION 2
HOWARD COUNTY, MARYLAND
DEPARTMENT OF PUBLIC WORKS



Kenneth A. McCard

Diary FB# 4792
Stalwart FB# 4791

I.W.L. Section 2 of
Contract No. 321-S

WHITMAN, REQUARDT & ASSOCIATES ENGINEERS 1304 ST. PAUL ST. BALTIMORE, MARYLAND	HOWARD COUNTY METROPOLITAN COMMISSION DATE <u>4-15-75</u> <i>W.O. Filler</i> CHIEF ENGINEER	CONTRACT NO. <u>321-S</u>	LOCATION MAP	GUILFORD INTERCEPTOR SECTION 2 GENERAL ELECTRIC INDUSTRIAL WASTE LINE SECTION 2	DRAWING NO. <u>1</u> OF <u>8</u>	SCALE AS SHOWN
---	---	---------------------------	--------------	---	-------------------------------------	----------------

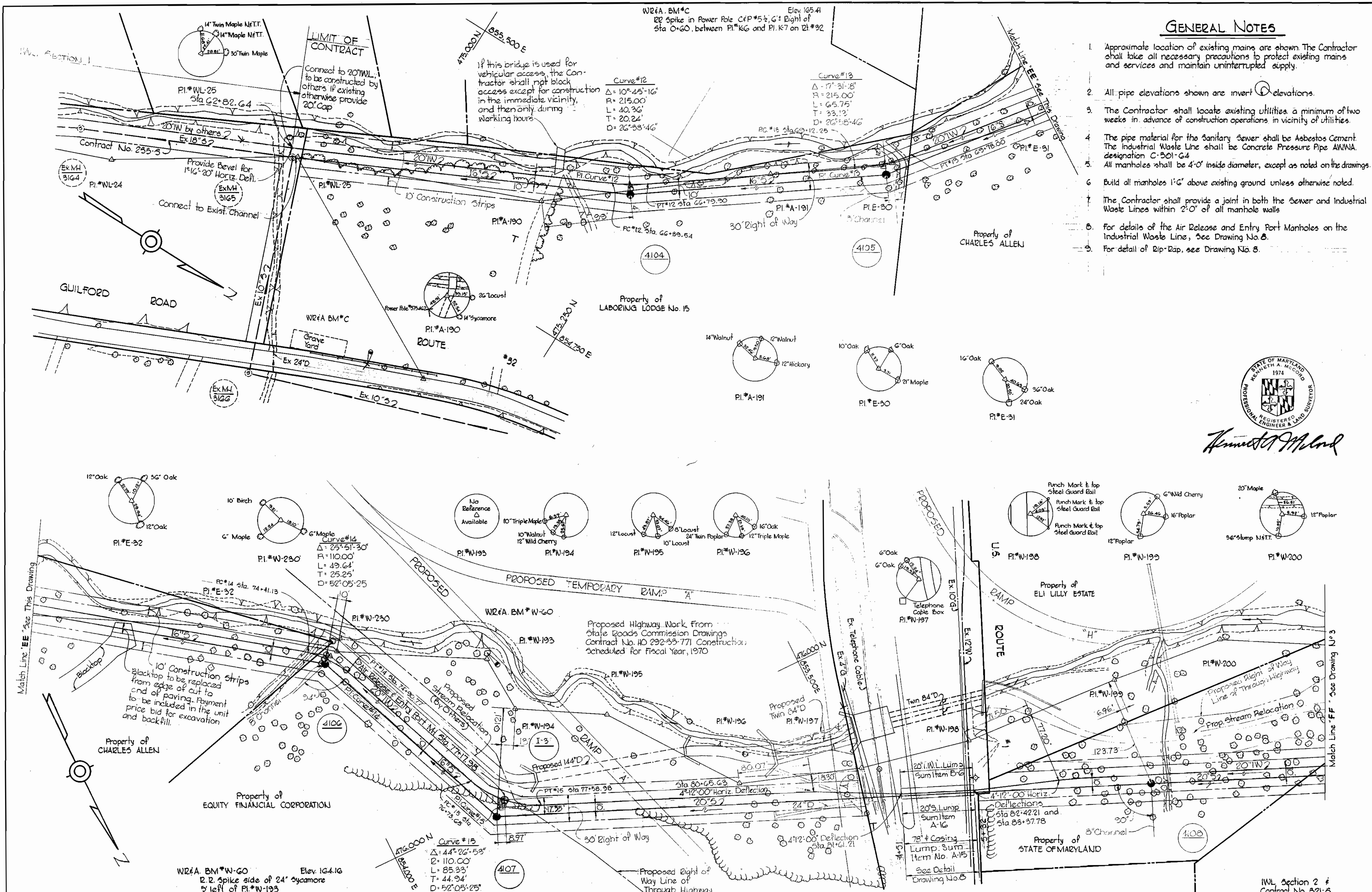
W. O. 6185-2
6272-2

AS BUILT

Aug 23, 1971

WS 321-S/1

WS 321-S/2



GENERAL NOTES

1. Approximate location of existing mains are shown. The Contractor shall take all necessary precautions to protect existing mains and services and maintain uninterrupted supply.
2. All pipe elevations shown are invert elevations.
3. The Contractor shall locate existing utilities a minimum of two weeks in advance of construction operations in vicinity of utilities.
4. The pipe material for the Sanitary Sewer shall be Asbestos Cement. The Industrial Waste Line shall be Concrete Pressure Pipe AWWA designation C-501-G4.
5. All manholes shall be 4'-0" inside diameter, except as noted on the drawings.
6. Build all manholes 1'-6" above existing ground unless otherwise noted.
7. The Contractor shall provide a joint in both the Sewer and Industrial Waste Lines within 2'-0" of all manhole walls.
8. For details of the Air Release and Entry Port Manholes on the Industrial Waste Line, see Drawing No. 8.
9. For detail of Rip-Rap, see Drawing No. 8.



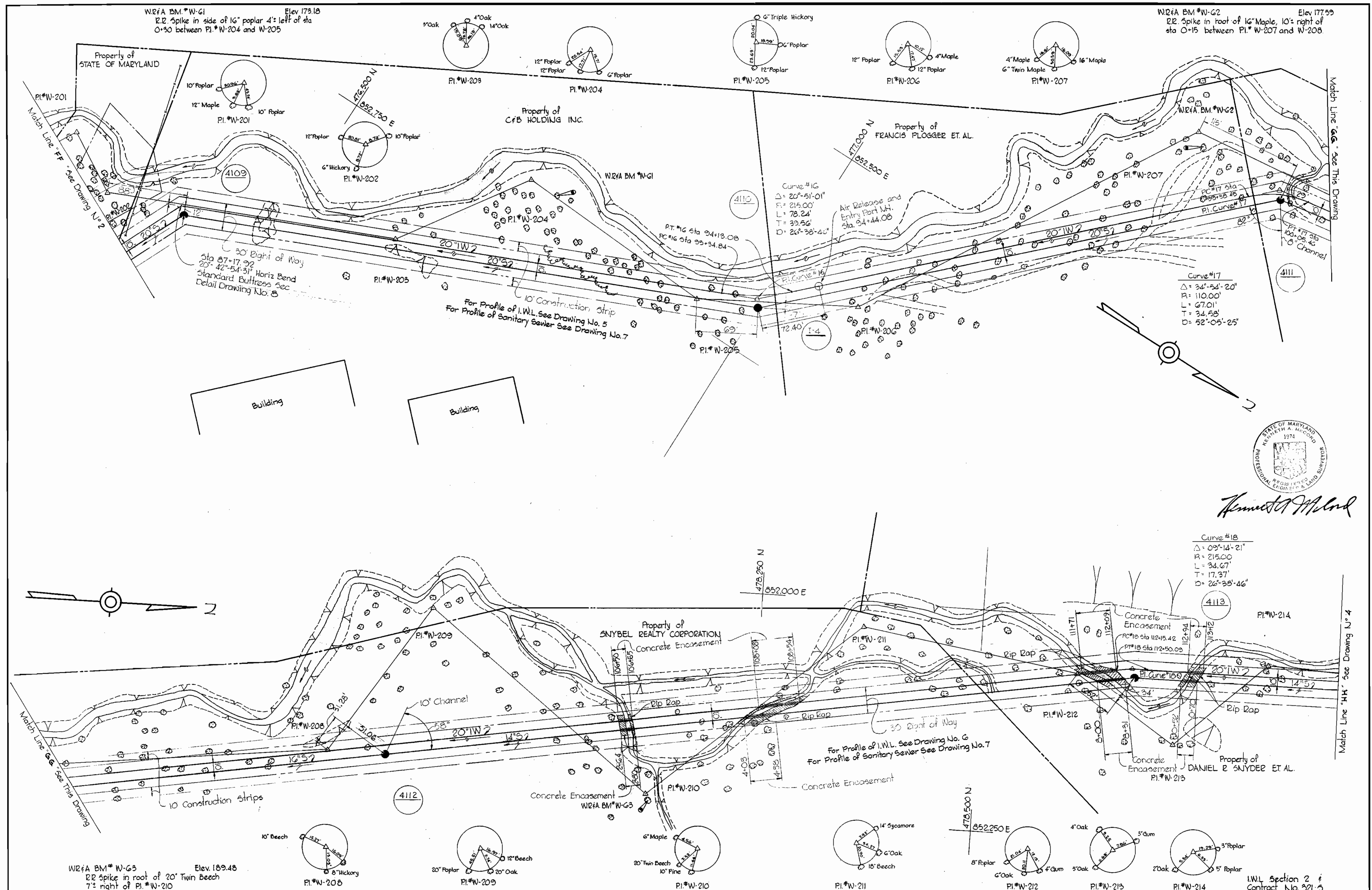
Kenneth M. Lund
 REGISTERED PROFESSIONAL ENGINEER & LAND SURVEYOR

WHITMAN, REQUARDT & ASSOCIATES ENGINEERS 1304 ST. PAUL ST. BALTIMORE, MARYLAND	DEPARTMENT OF PUBLIC WORKS HOWARD COUNTY, MARYLAND DATE: 3-11-70 W. O. Filbert CHIEF - BUREAU OF WATER AND SEWER	CONTRACT NO. 321-S	PLAN OF SEWER MAINS	GUILFORD INTERCEPTOR SECTION 2 GENERAL ELECTRIC INDUSTRIAL WASTE LINE SECTION 2	DRAWING NO. 2 OF 8 SCALE 1"=50' 476-488 475-489 475-488
--	---	---------------------------	----------------------------	--	---

W. O. 6187-2
 6272-2

FB # 4437, 4498
 AS BUILT Aug 23, 1971

WS 321-S/3

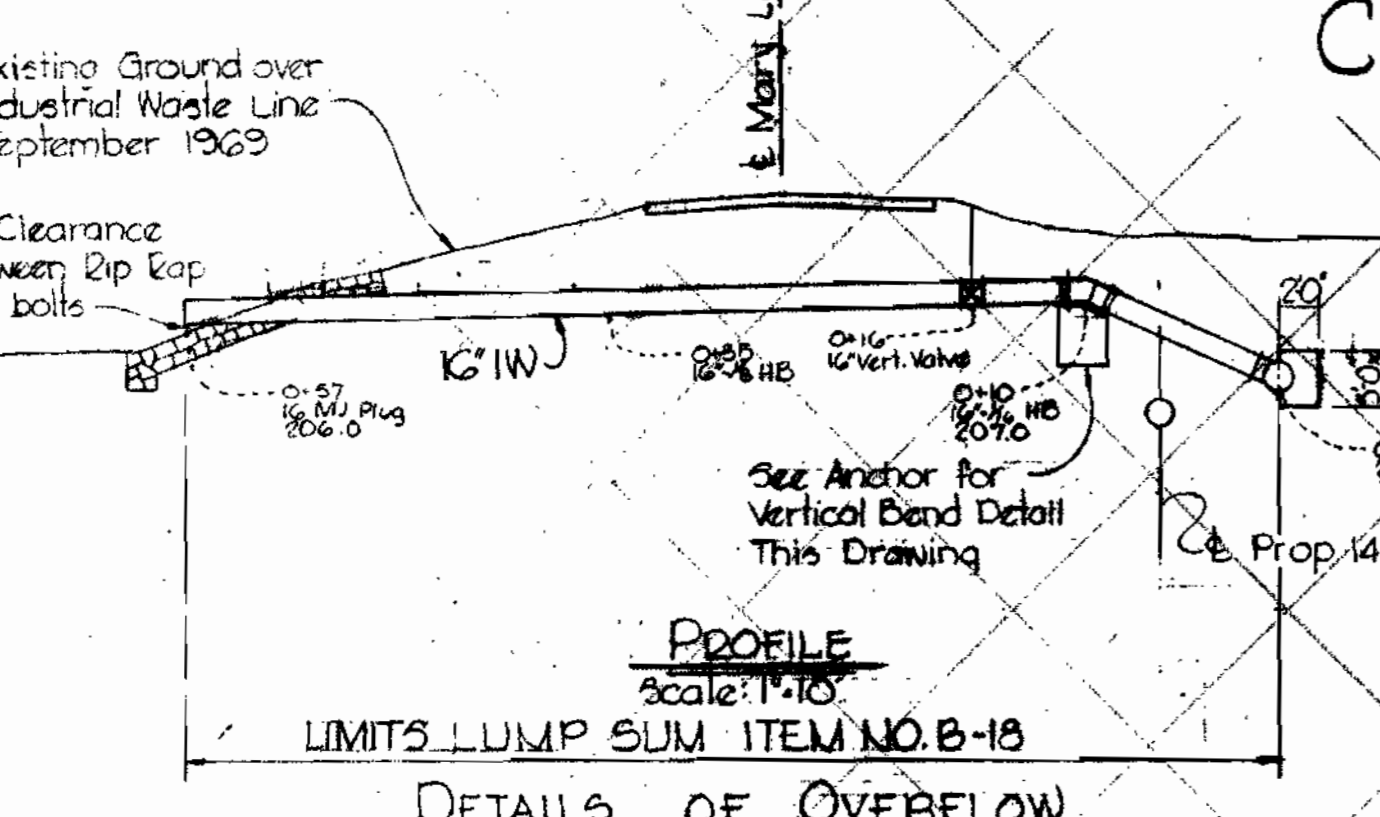
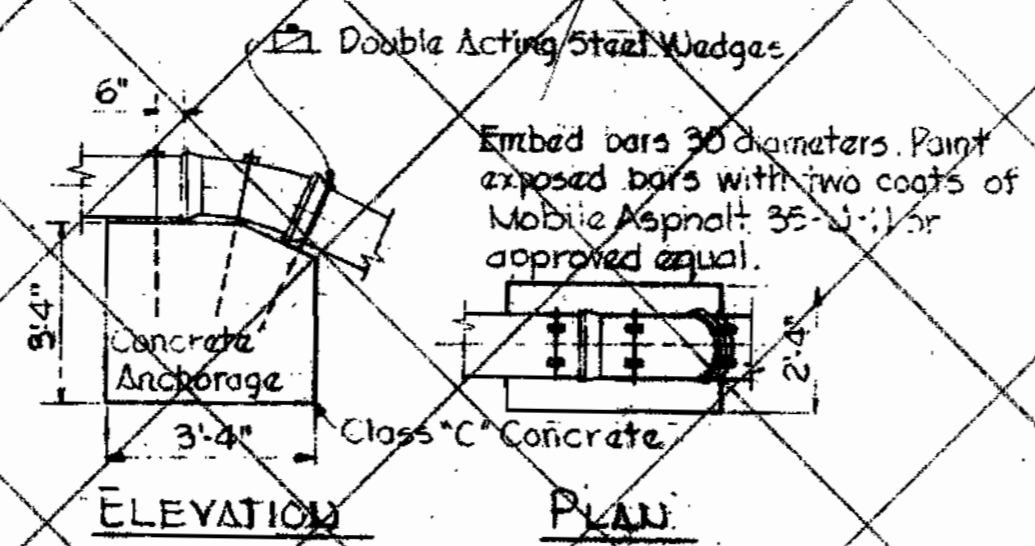
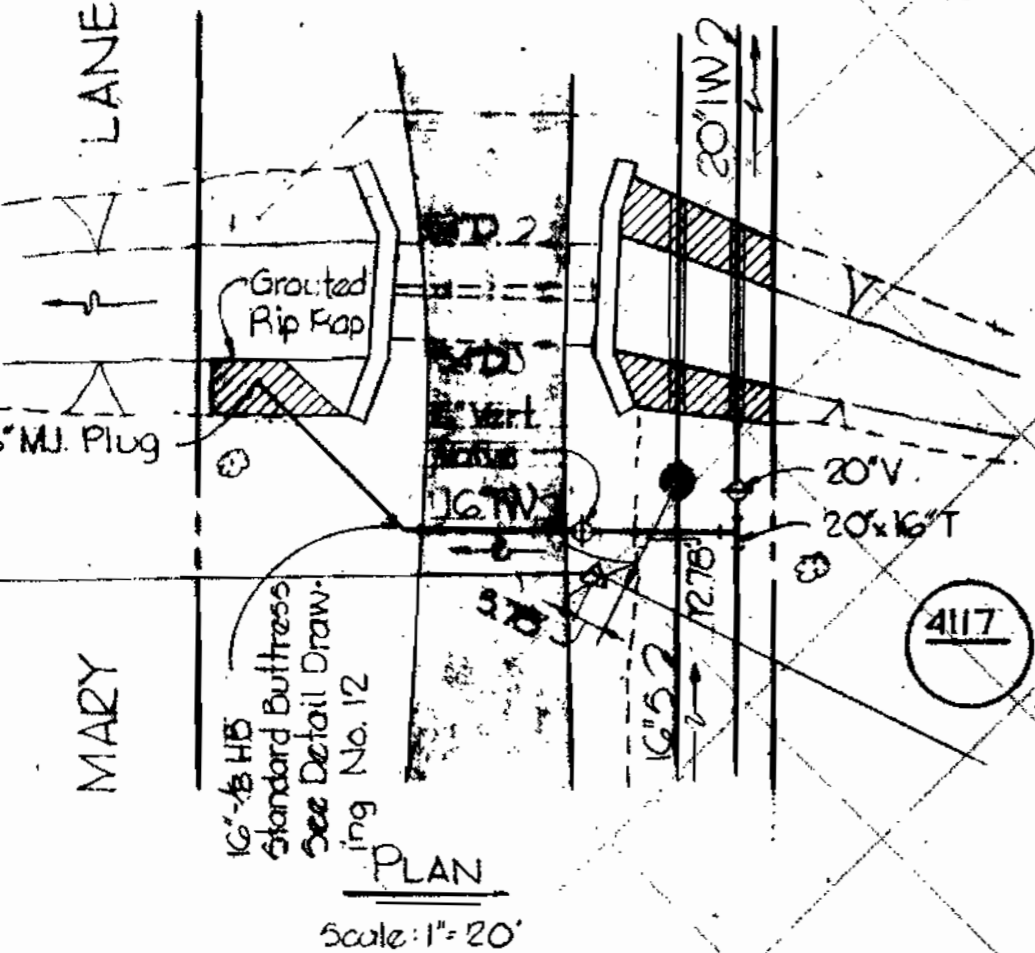
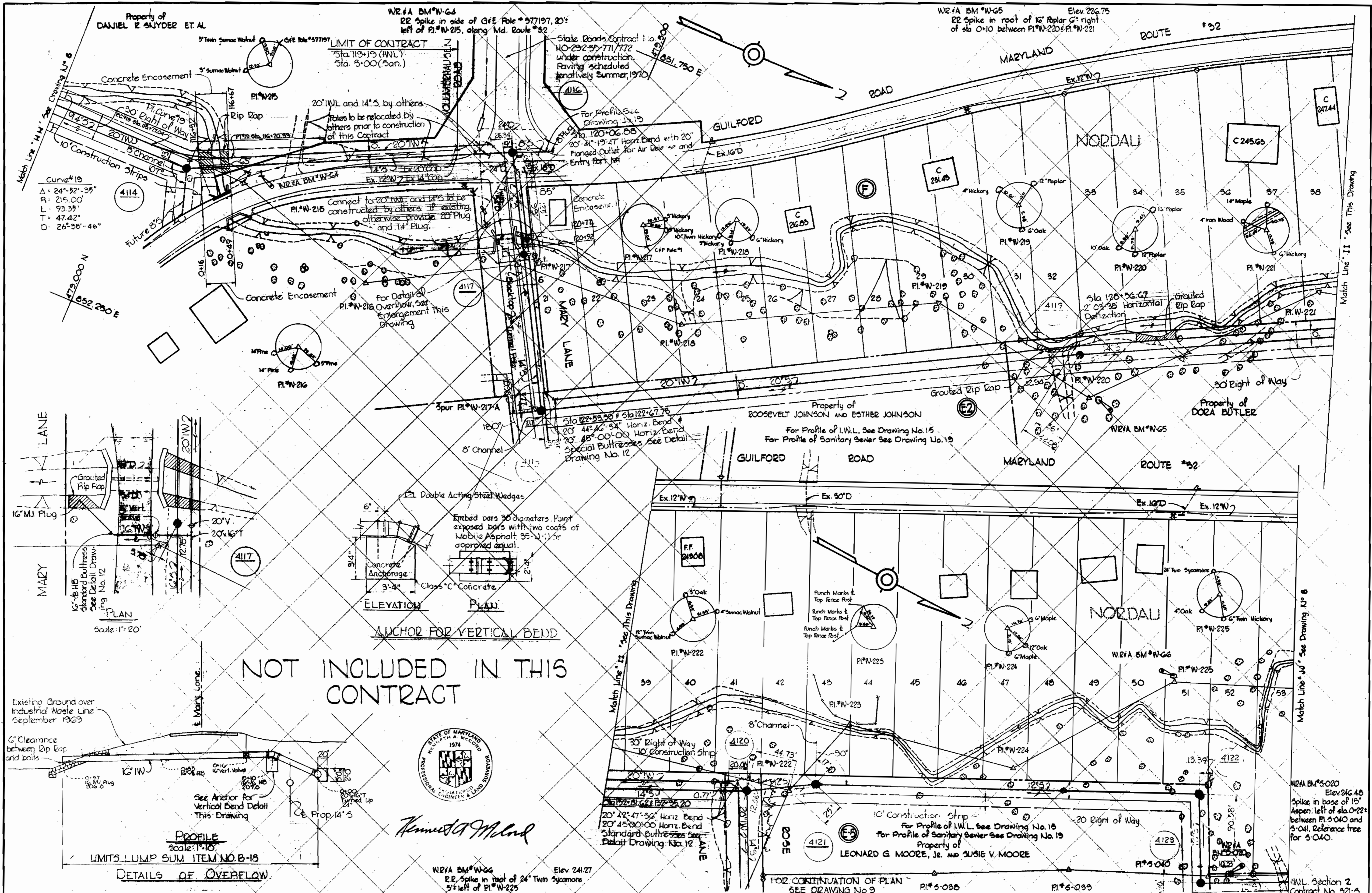


WHITMAN, REQUARDT & ASSOCIATES ENGINEERS 1304 ST. PAUL ST. BALTIMORE, MARYLAND	DEPARTMENT OF PUBLIC WORKS HOWARD COUNTY, MARYLAND 3-11-70 DATE <i>W. O. Fallett</i> CHIEF-BUREAU OF WATER AND SEWER	CONTRACT NO. 321-S	PLAN OF SEWER MAINS	GUILFORD INTERCEPTOR SECTION 2 GENERAL ELECTRIC INDUSTRIAL WASTE LINE SECTION 2	DRAWING NO. 3 OF 8 SCALE 1"=50' 476-487 477-488 477-487 476-488
---	---	--------------------	------------------------	---	--

W. O. 6189-2
6272-2

FB*4437
AS BUILT
Aug 23, 1971

WS 321-S/4



Kenneth A. McLeod

WHITMAN, REQUARDT & ASSOCIATES
 ENGINEERS
 1304 ST. PAUL ST.
 BALTIMORE, MARYLAND

DEPARTMENT OF PUBLIC WORKS
 HOWARD COUNTY, MARYLAND
 DATE: 3-11-70
W. O. Sullivan
 CHIEF - BUREAU OF WATER AND SEWER

CONTRACT NO. 321-S

PLAN OF SEWER MAINS

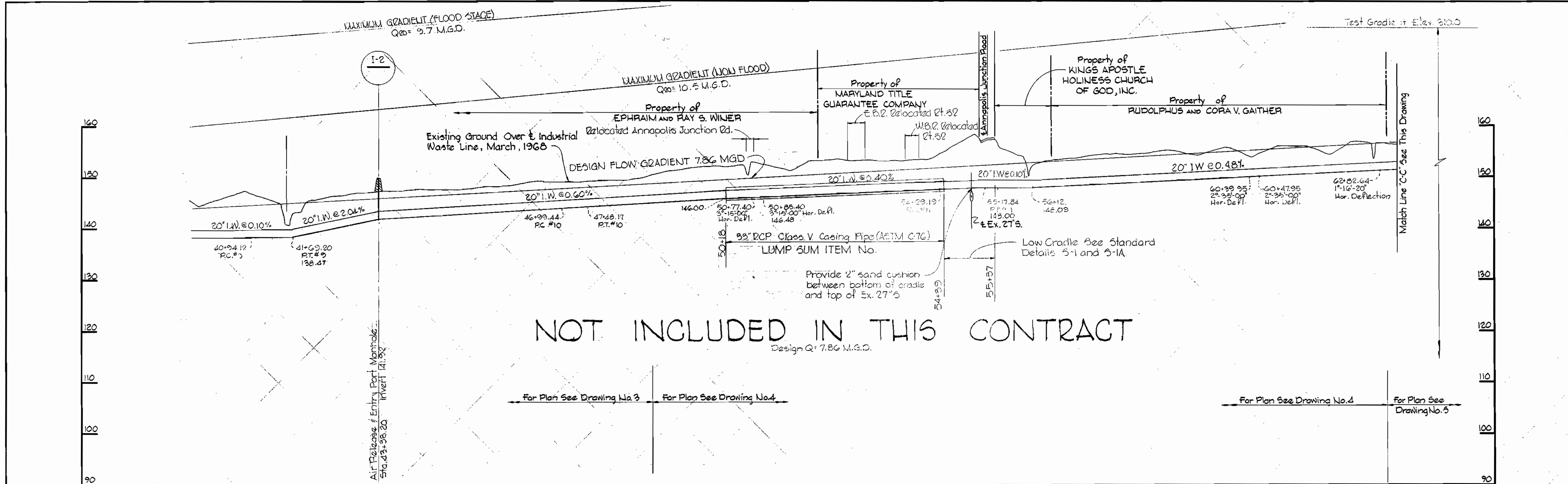
GUILFORD INTERCEPTOR SECTION 2
GENERAL ELECTRIC INDUSTRIAL WASTE LINE
 SECTION 2

DRAWING NO. 4 OF 8
 SCALE 1" = 50'

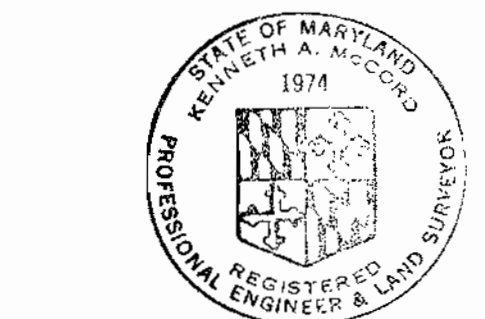
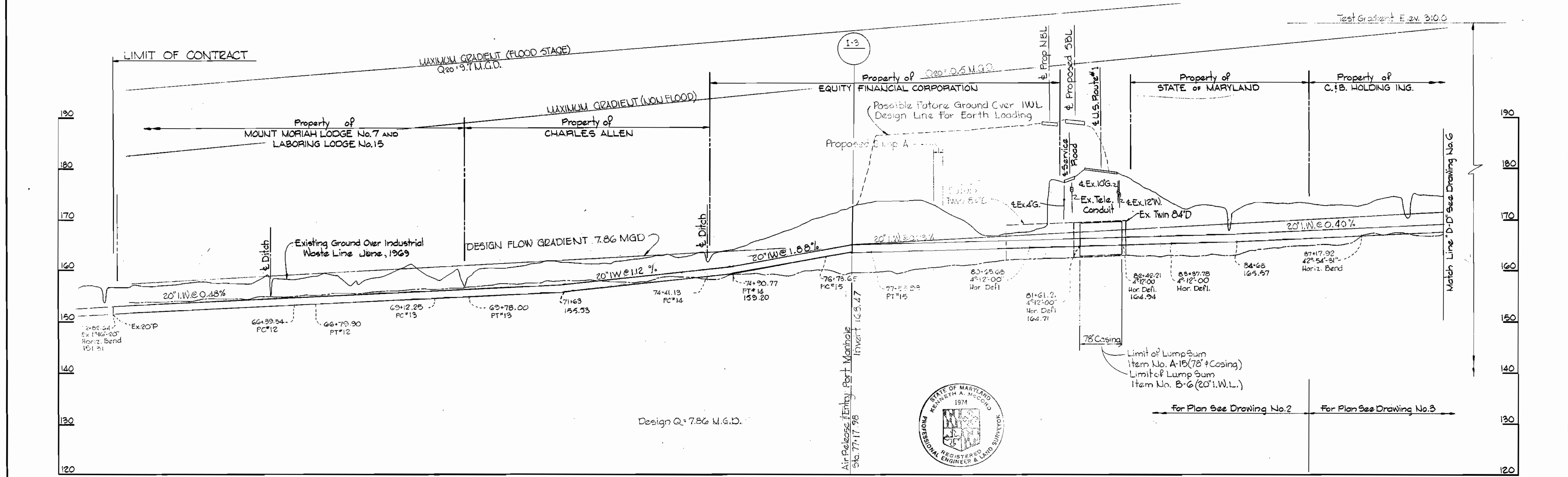
W. O. 6187-2
 6272-2

FB 4485 Aug 23, 1971
 AS BUILT

WS 321-S/5



NOT INCLUDED IN THIS CONTRACT



Kenneth A. McCord

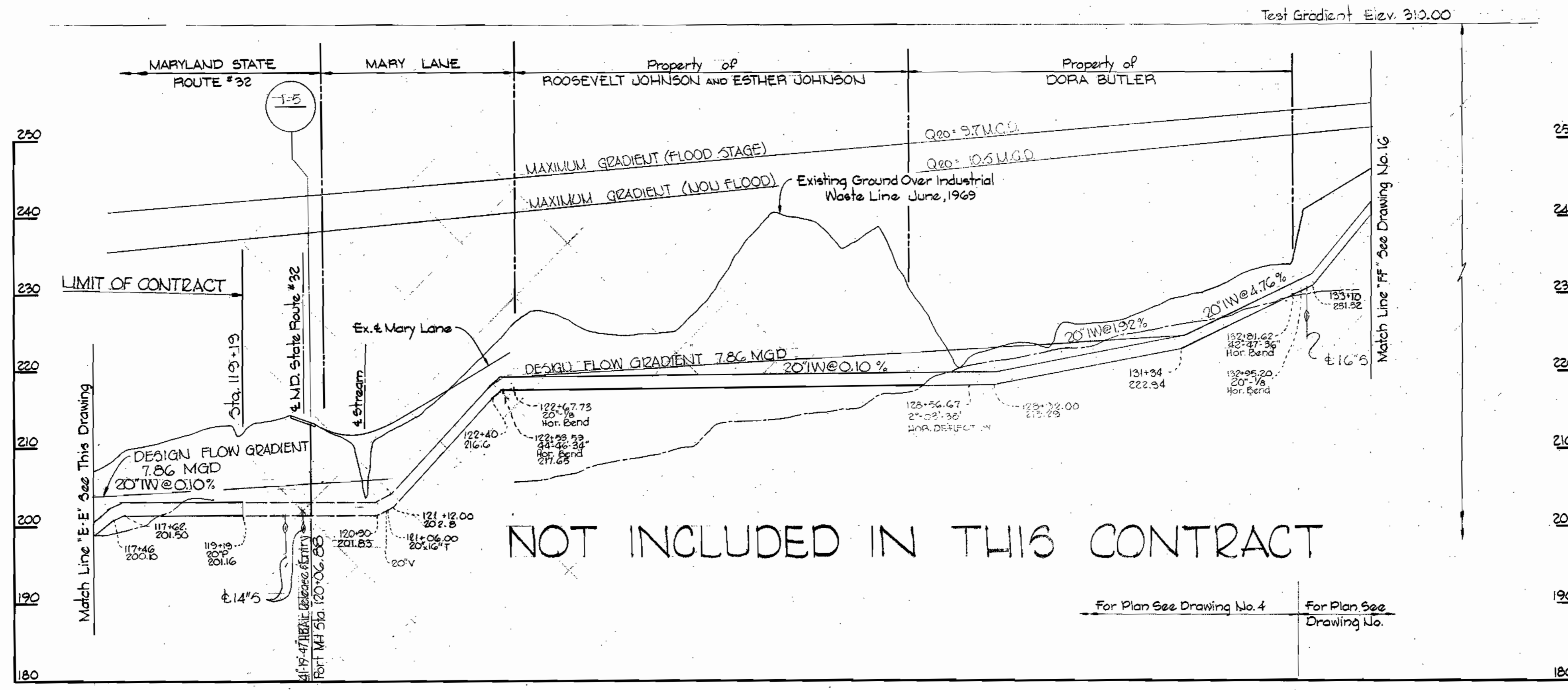
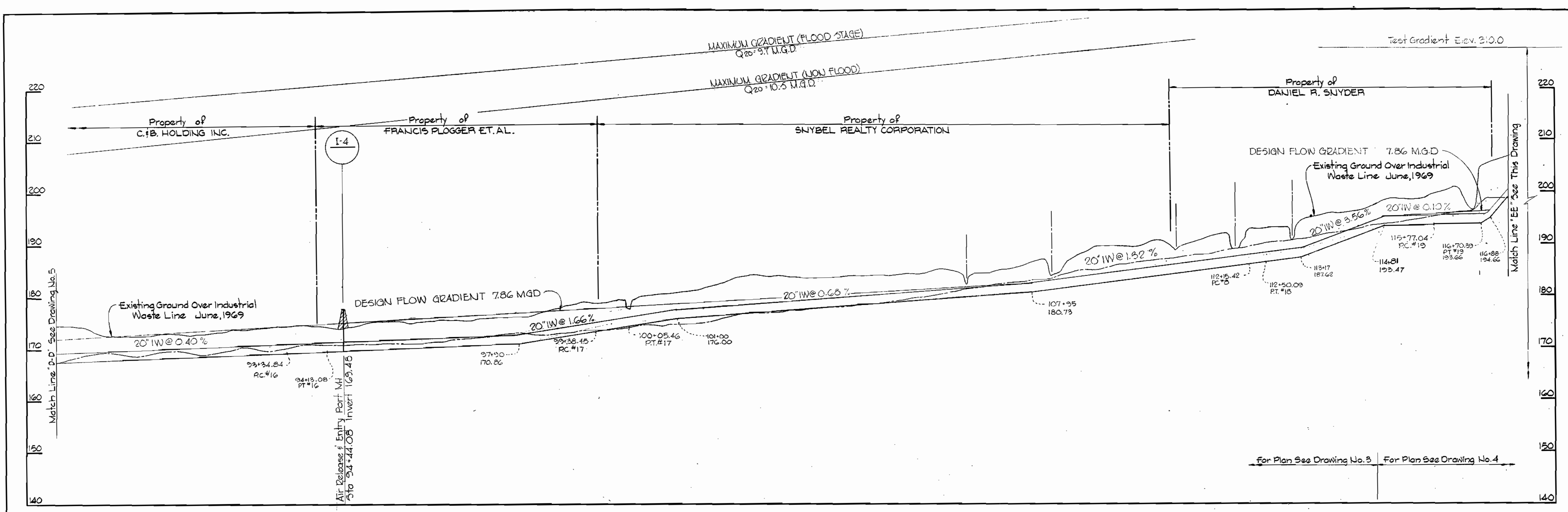
WHITMAN, REQUARDT & ASSOCIATES ENGINEERS 1304 ST. PAUL ST. BALTIMORE, MARYLAND	DEPARTMENT OF PUBLIC WORKS HOWARD COUNTY, MARYLAND 3-11-70 <i>W. O. Fallick</i> CHIEF-BUREAU OF WATER AND SEWER	CONTRACT NO. 321-S	PROFILES OF INDUSTRIAL WASTE LINES	GUILFORD INTERCEPTOR SECTION 2 GENERAL ELECTRIC INDUSTRIAL WASTE LINE SECTION 2	PART 'B' Contract No. LWL Section 2 DRAWING NO. 5 OF 8 SCALE 1"=100'H 1"=10'V
---	---	--------------------	---------------------------------------	---	---

W. O. G272-2

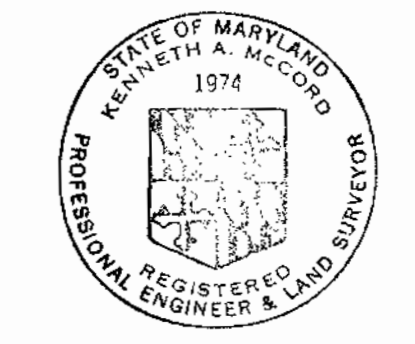
Aug 23, 1971 AS BUILT

SURFACE

INDUSTRIAL



NOT INCLUDED IN THIS CONTRACT



Kenneth A. McLeod

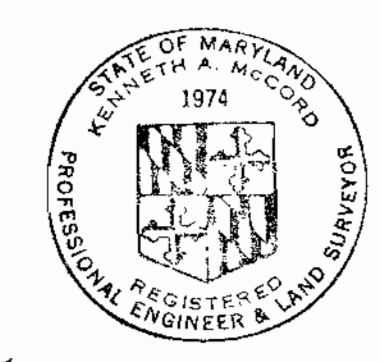
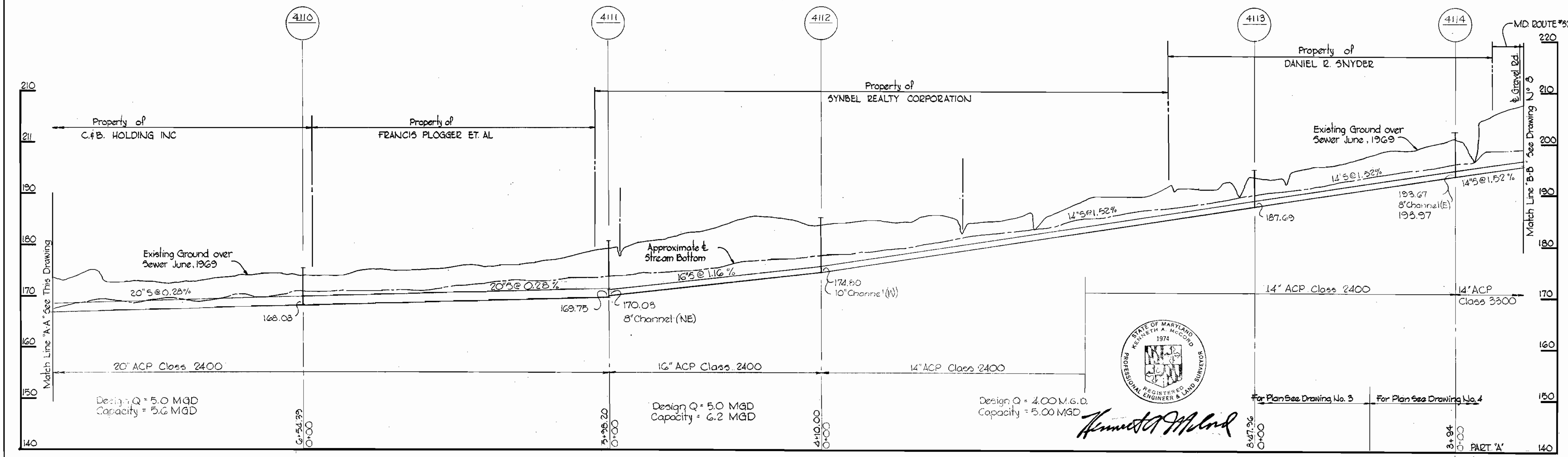
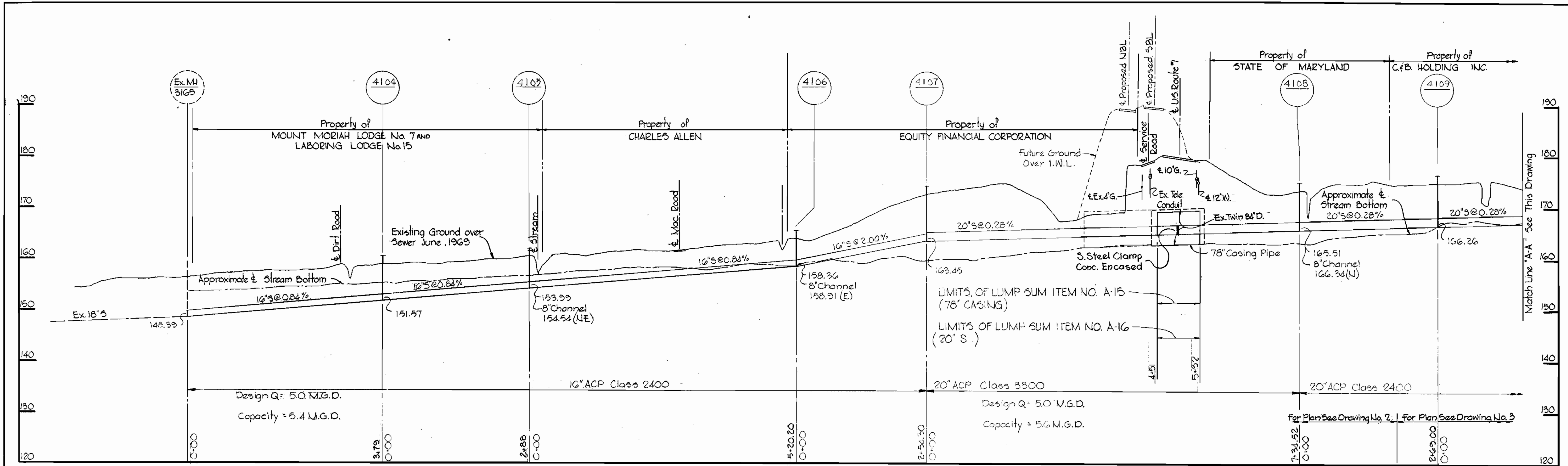
WS 321-S/6

WHITMAN, REQUARDT & ASSOCIATES ENGINEERS 1304 ST. PAUL ST. BALTIMORE, MARYLAND	HOWARD COUNTY METROPOLITAN COMMISSION 3-11-70 DATE <i>W. O. Filbert</i> CHIEF ENGINEER	CONTRACT NO. 321-S	PROFILES OF INDUSTRIAL WASTE LINES	GUILFORD INTERCEPTOR SECTION 2 GENERAL ELECTRIC INDUSTRIAL WASTE LINE SECTION 2	PART "B" Contract No. INL Section 2 DRAWING NO. 6 OF 8 SCALE 1"=100'H 1"=10'V
---	--	--------------------	---------------------------------------	---	---

W. O. 6272-2

AS BUILT Aug 23, 1971

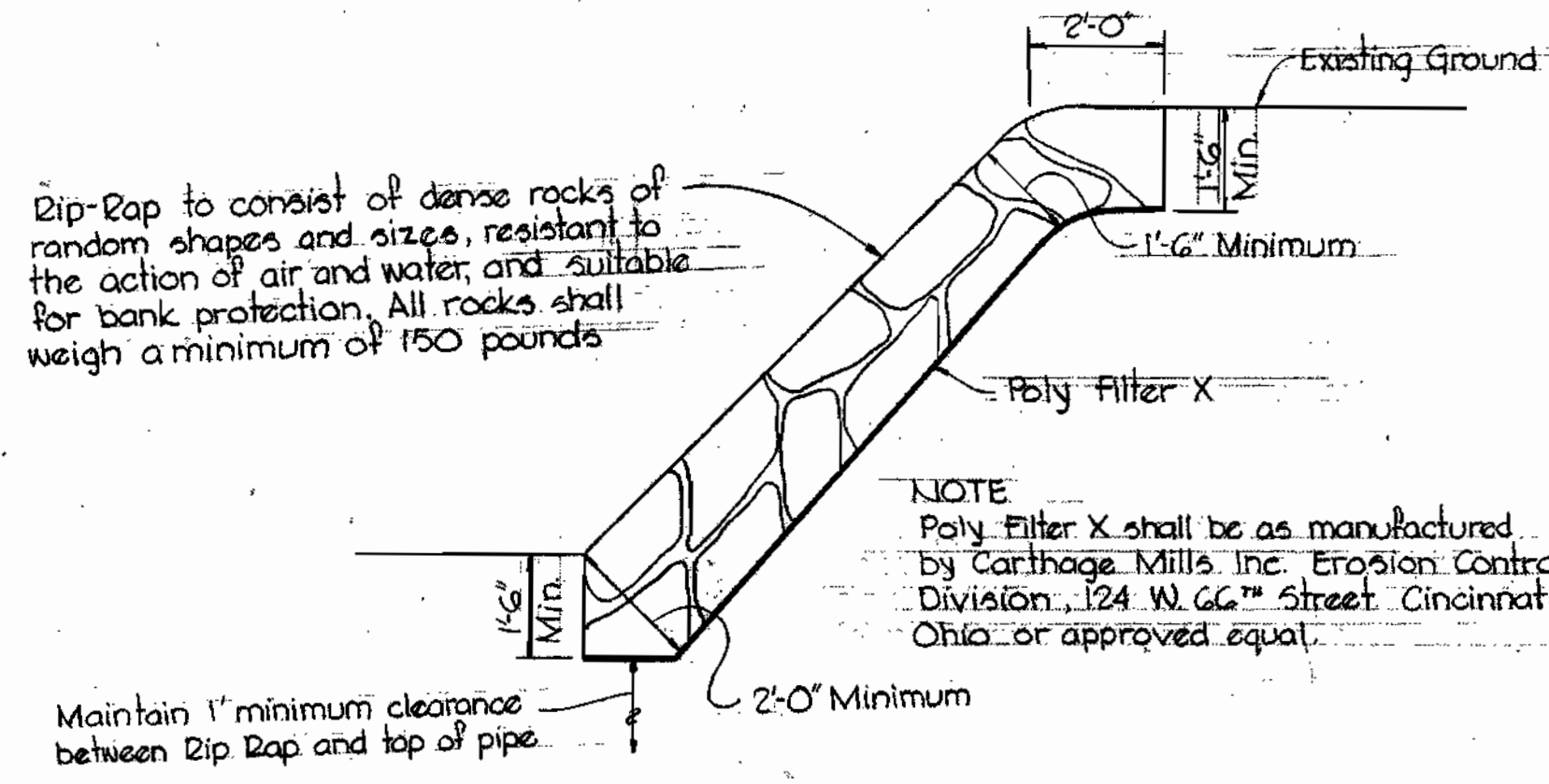
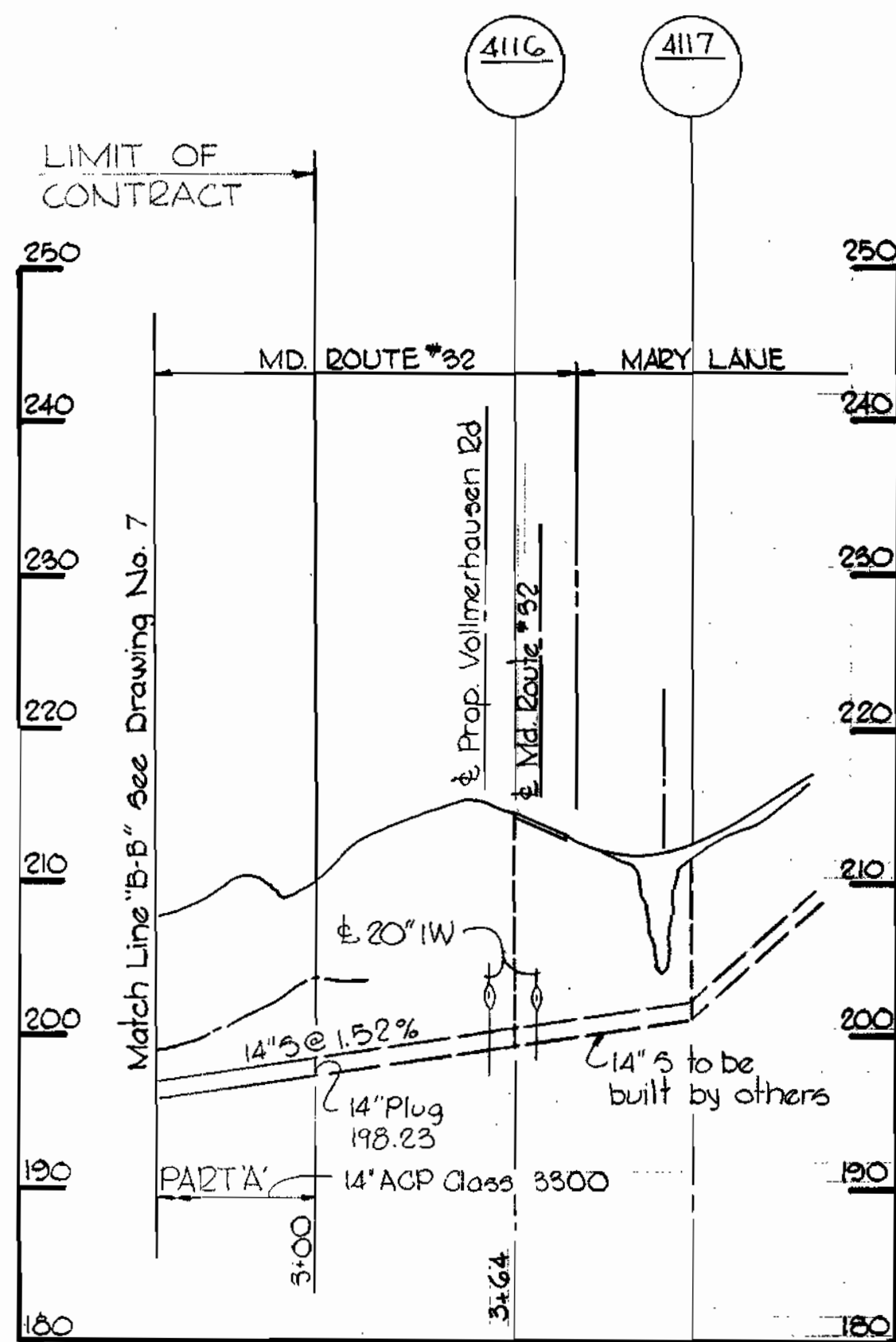
WS 321-S/7



Kenneth A. McCord
 KENNETH A. MCCORD
 PROFESSIONAL ENGINEER & LAND SURVEYOR

WHITMAN, REQUARDT & ASSOCIATES ENGINEERS 1304 ST. PAUL ST. BALTIMORE, MARYLAND	DEPARTMENT OF PUBLIC WORKS HOWARD COUNTY, MARYLAND DATE 3-11-70 <i>W. O. Falbert</i> CHIEF - BUREAU OF WATER AND SEWER	CONTRACT NO. 321-S	PROFILES OF SEWER MAINS	GUILFORD INTERCEPTOR SECTION 2 GENERAL ELECTRIC INDUSTRIAL WASTE LINE SECTION 2	DRAWING NO. 7 OF 8	SCALE H"=10' V"=10'
					Contract No. 321-S PART 'A'	

W. O. 6183-2



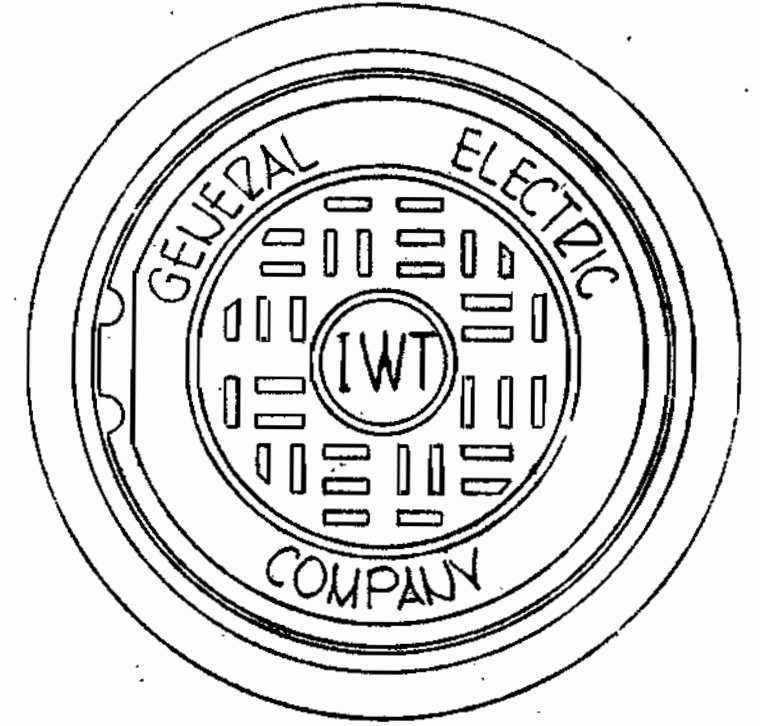
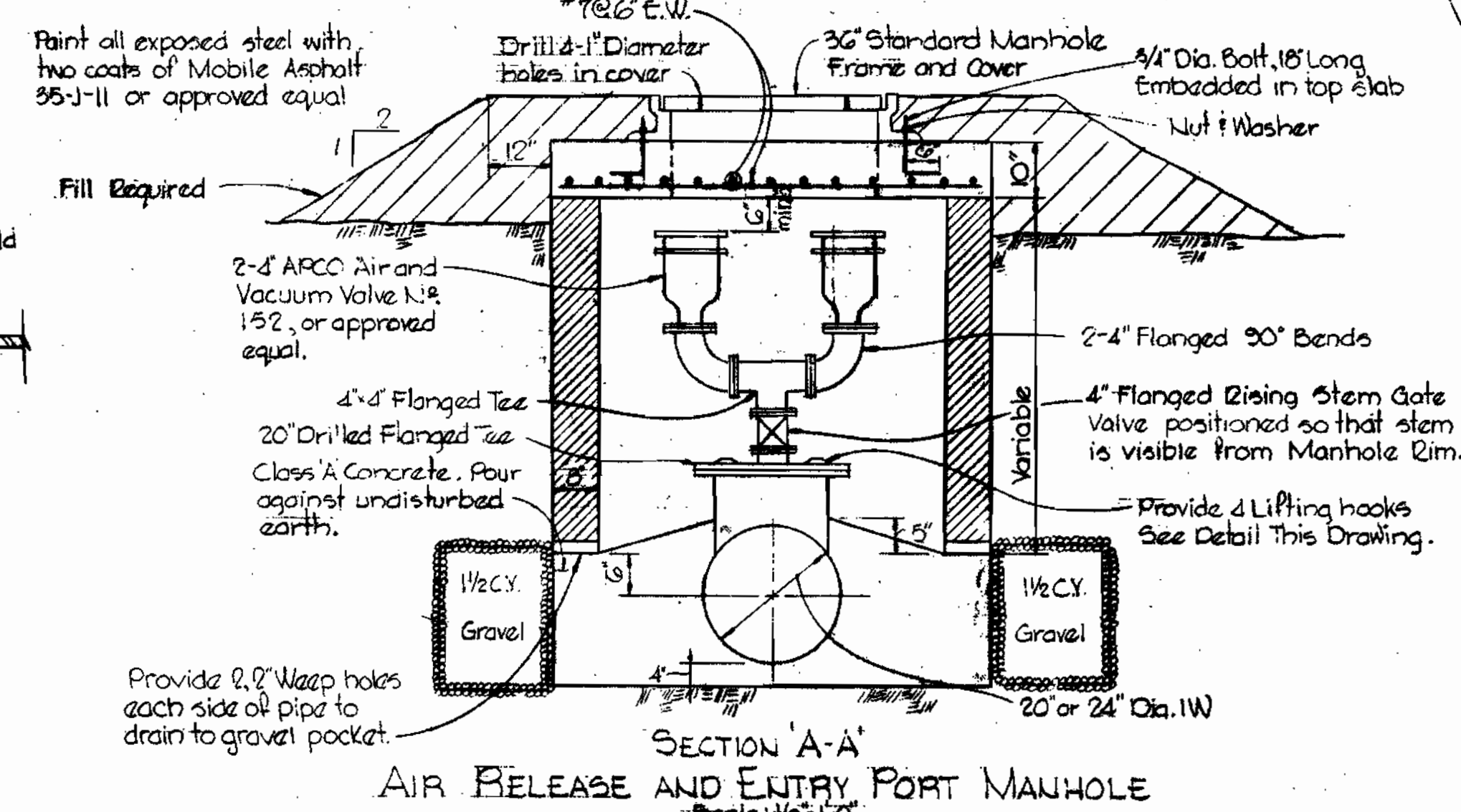
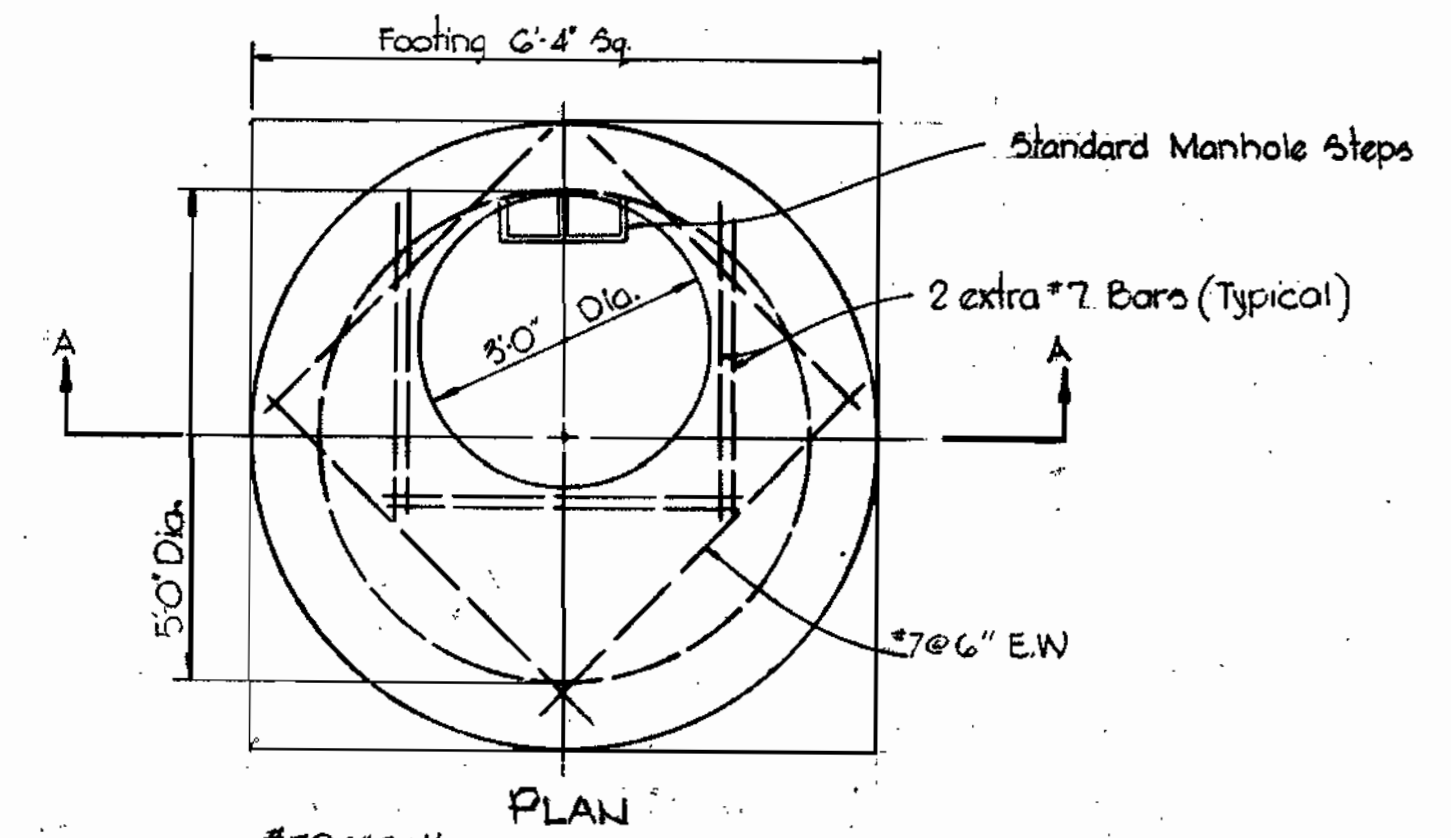
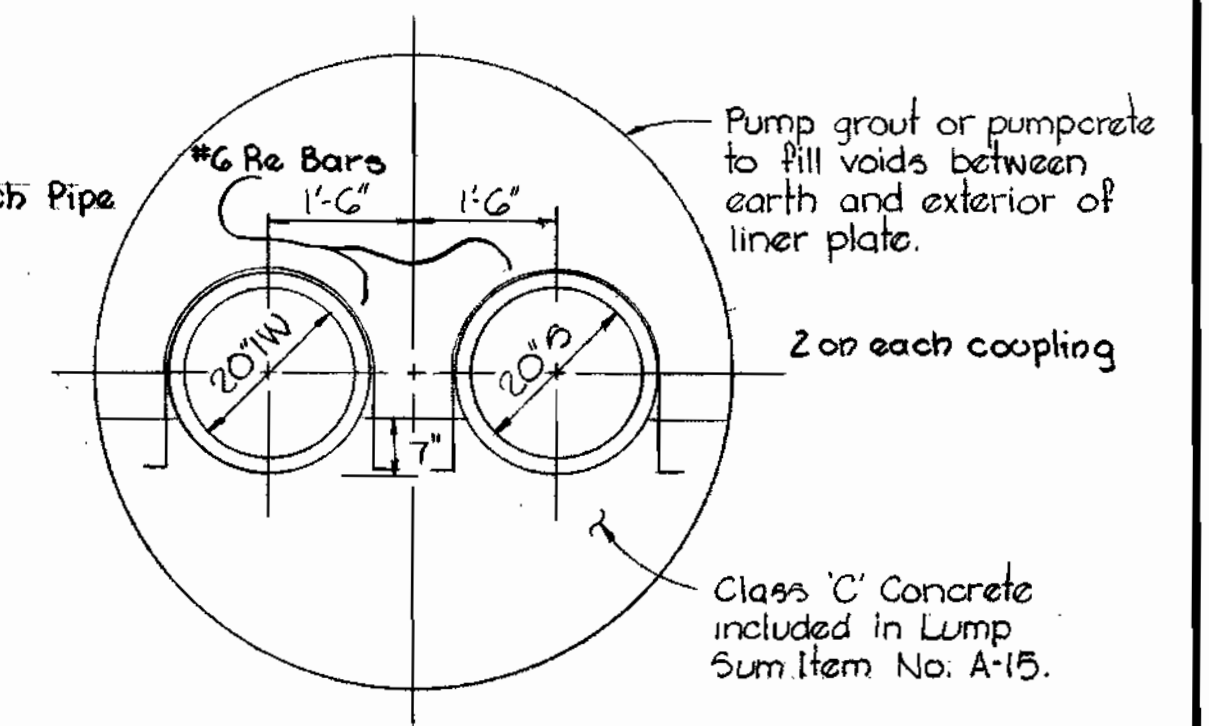
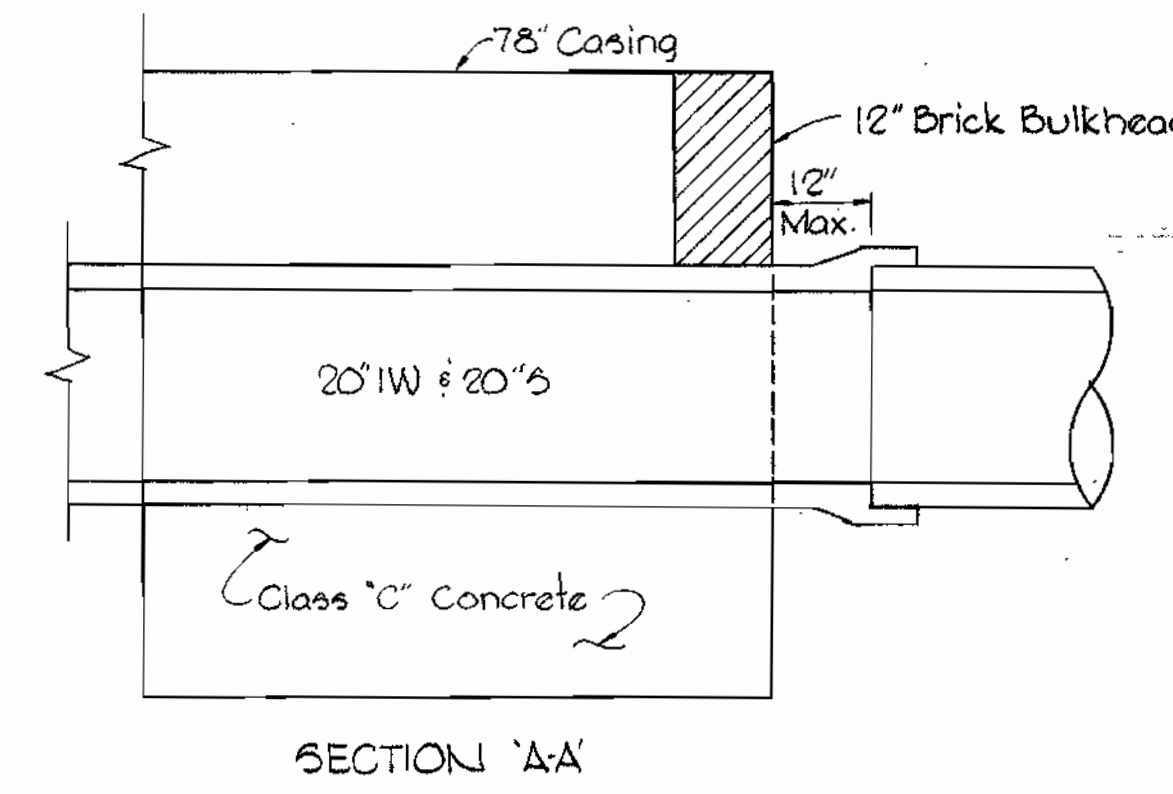
MINIMUM LINER PLATE REQUIREMENTS

ARVCO 1/8 ga.
COMMERCIAL 3/8"
TEUSCON 3/8"

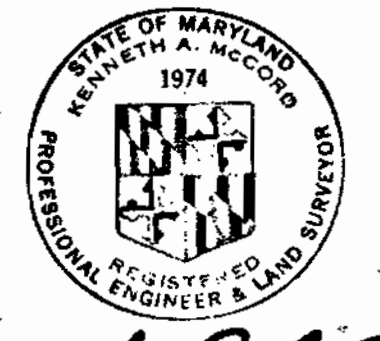
All Tunnel Liner Plate shall be Hot Dipped Galvanized and Asphalt coated.

78" CONCRETE PIPE REQUIREMENTS

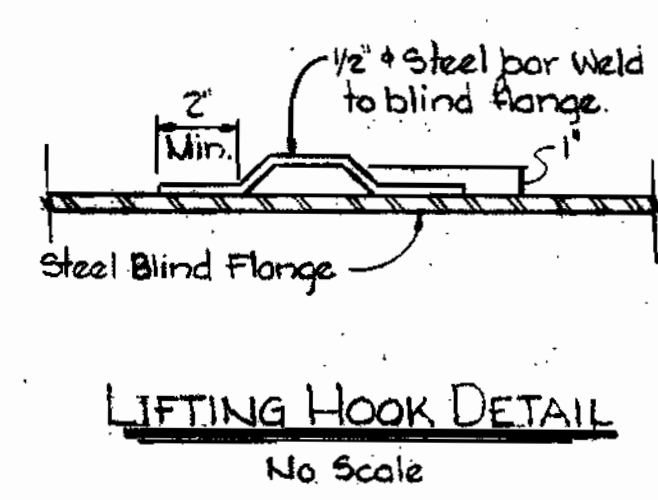
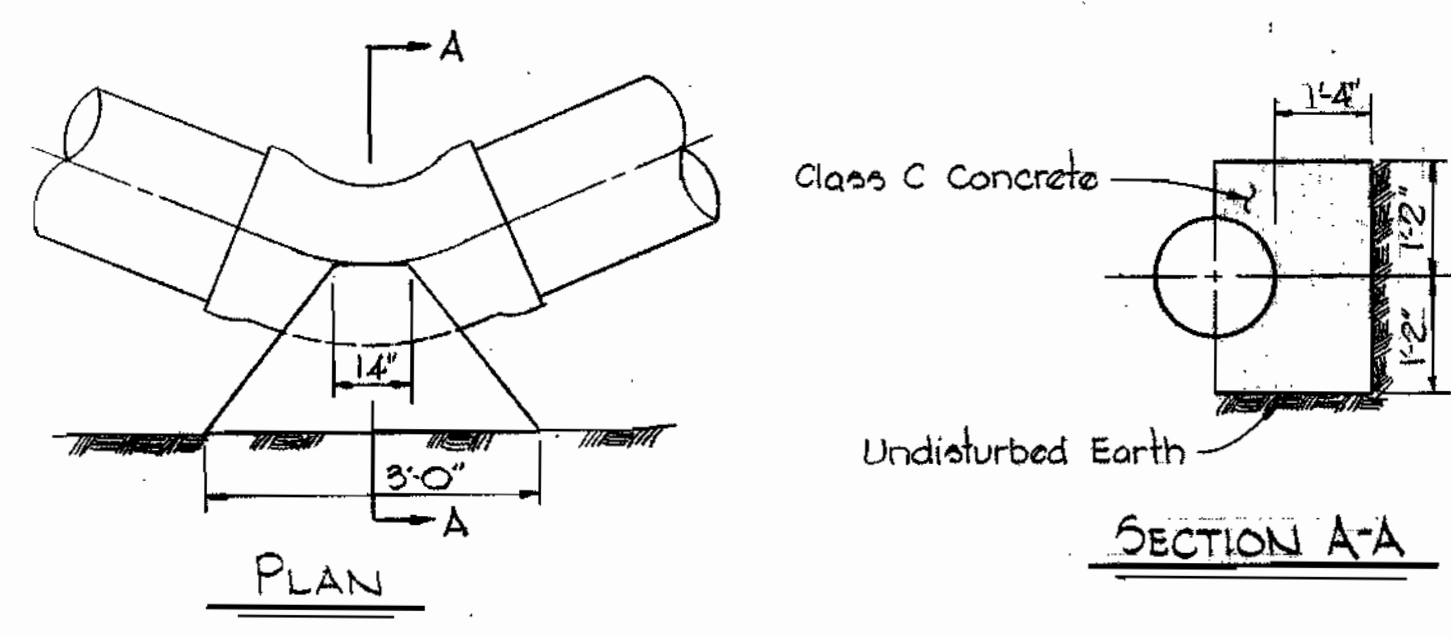
FOR JACKING ASTM C-76 CLASS V
IN OPEN CUT ASTM C-76 CLASS V



INDUSTRIAL WASTE MANHOLE COVER



Kenneth A. McLeod



WHITMAN, REQUARDT & ASSOCIATES
ENGINEERS
1304 ST. PAUL ST.
BALTIMORE, MARYLAND

DEPARTMENT OF PUBLIC WORKS
HOWARD COUNTY, MARYLAND
3-11-70
W. O. FALWELL
CHIEF-BUREAU OF WATER AND SEWER

CONTRACT NO. 321-S

PROFILE AND DETAILS OF INDUSTRIAL WASTE LINES

GUILFORD INTERCEPTOR SECTION 2
GENERAL ELECTRIC INDUSTRIAL WASTE LINE
SECTION 2

DRAWING NO. 8 OF 8
SCALE AS SHOWN

W. O. 6185-2
6272-2

Aug 23, 1971
AS BUILT

WS 321-S/8