



QUANTITIES	
ITEM	QUANTITY

CONTRACT 320-W

STAKEOUT & DIARY F/B 4539
U.S. CAST IRON PIPE USED

HOWARD COUNTY, MARYLAND DEPARTMENT OF PUBLIC WORKS



Kenneth A. McCord
Contract N° 320-W

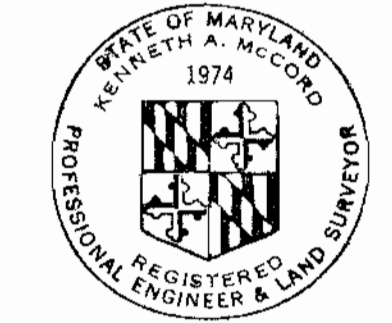
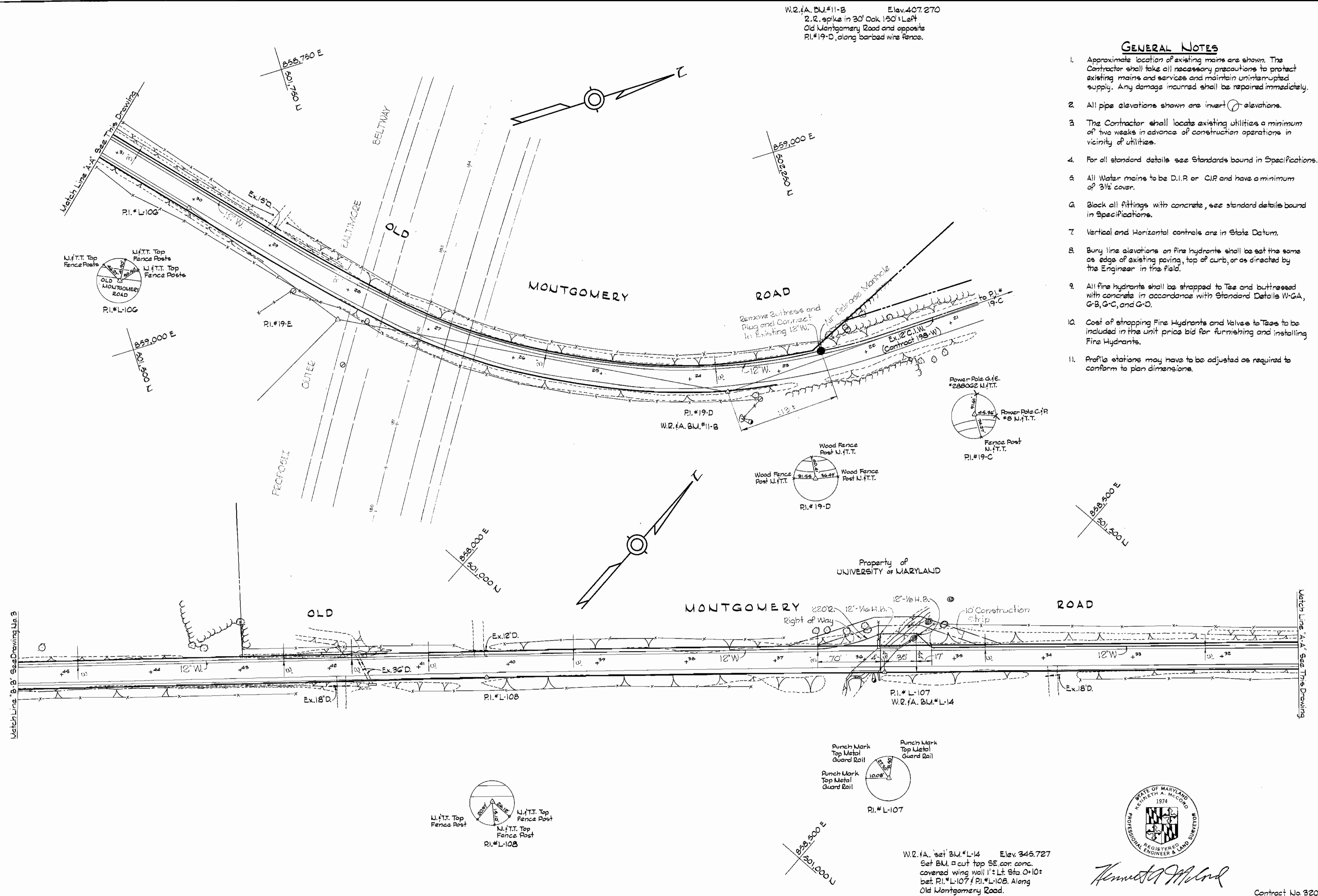
WHITMAN, REQUARDT & ASSOCIATES ENGINEERS 1304 ST. PAUL ST. BALTIMORE, MARYLAND	HOWARD COUNTY METROPOLITAN COMMISSION 8-20-69 <i>W O Felbert</i> <small>DATE CHIEF ENGINEER</small>	CONTRACT NO. 320-W	LOCATION MAP	ELECTION DISTRICT GUILFORD NO. 6	DRAWING NO. 1 OF 9 SCALE AS SHOWN
---	---	--------------------	--------------	-------------------------------------	--------------------------------------

W/S 320-W/1

W.R.#A. BU.#11-B Elev. 407.270
 2" R. spike in 30' Oak 150' Left
 Old Montgomery Road and opposite
 R.I.#19-D, along barbed wire fence.

GENERAL NOTES

1. Approximate location of existing mains are shown. The Contractor shall take all necessary precautions to protect existing mains and services and maintain uninterrupted supply. Any damage incurred shall be repaired immediately.
2. All pipe elevations shown are invert elevations.
3. The Contractor shall locate existing utilities a minimum of two weeks in advance of construction operations in vicinity of utilities.
4. For all standard details see Standards bound in Specifications.
5. All Water mains to be D.I.P. or C.I.P. and have a minimum of 3 1/2' cover.
6. Block all fittings with concrete, see standard details bound in Specifications.
7. Vertical and Horizontal controls are in State Datum.
8. Bury line elevations on fire hydrants shall be set the same as edge of existing paving, top of curb, or as directed by the Engineer in the field.
9. All fire hydrants shall be strapped to Tees and buttressed with concrete in accordance with Standard Details W-GA, G-B, G-C, and G-D.
10. Cost of strapping Fire Hydrants and Valves to Tees to be included in the unit price bid for furnishing and installing Fire Hydrants.
11. Profile stations may have to be adjusted as required to conform to plan dimensions.



Kenneth A. McLeod

Contract No. 320-W

WHITMAN, REQUARDT & ASSOCIATES
 ENGINEERS
 1304 ST. PAUL ST.
 BALTIMORE, MARYLAND

HOWARD COUNTY METROPOLITAN COMMISSION
 8-20-69 DATE
W. O. Gilbert CHIEF ENGINEER

CONTRACT NO. 320-W

PLAN OF
 WATER MAINS

ELECTION DISTRICT
 GUILFORD NO. 6

DRAWING NO. 2 OF 9	SCALE 1"=50'
	450-491 201-491 502-491

W. O. G185-2

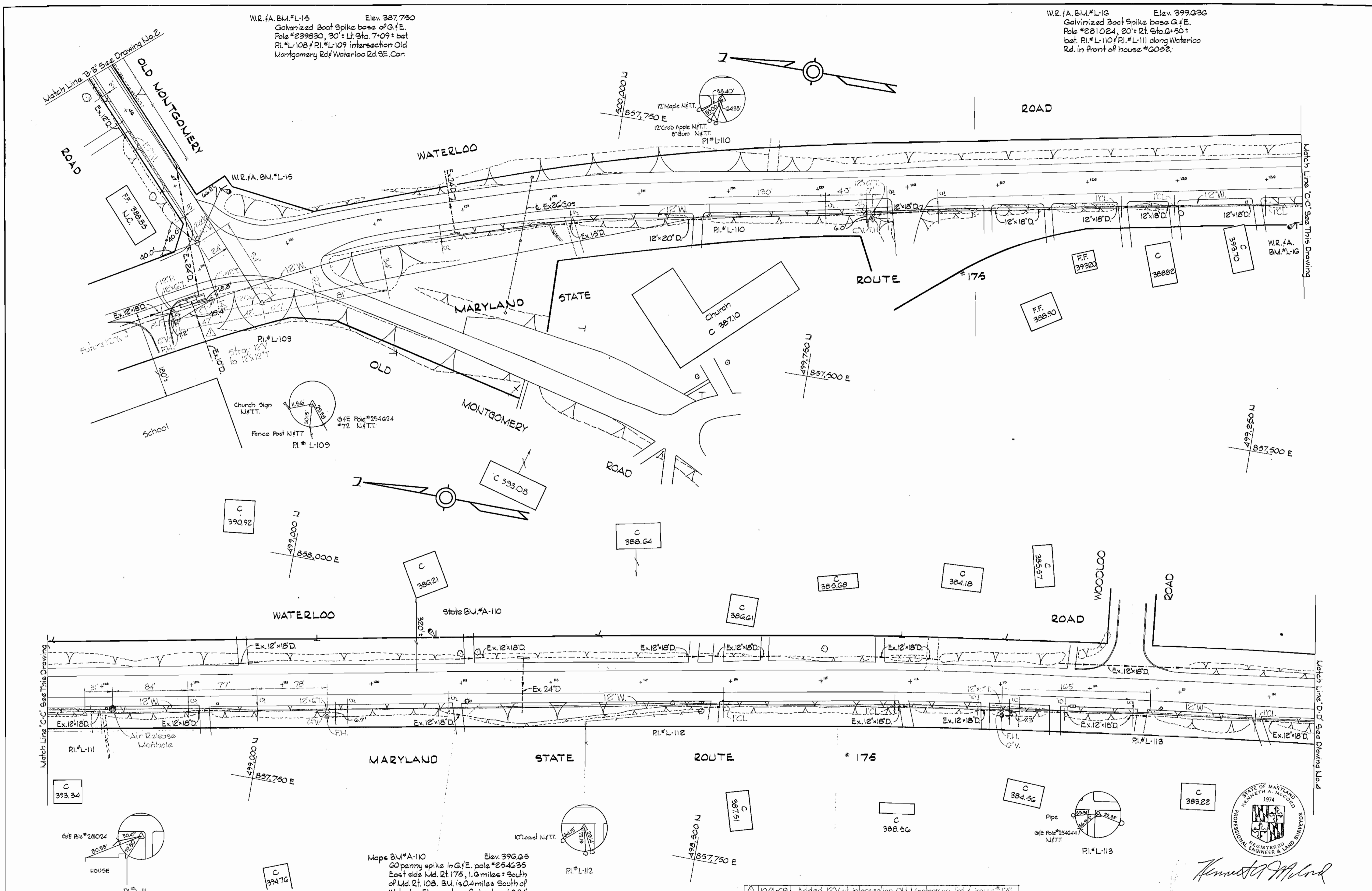
JULY 17, 1975 F.B.#4488 25 JUL 75

WS 320-W/2

WS 320-W/3

W.R. & A. B.M. #L-15 Elev. 387.750
Galvanized Boot Spike base of G.F.E.
Pole #239830, 30' Lt. Gha. 7'-09" bat
R.I. #L-108 & R.I. #L-109 intersection Old
Montgomery Rd & Waterloo Rd. SE. Cor.

W.R. & A. B.M. #L-16 Elev. 399.030
Galvanized Boot Spike base of G.F.E.
Pole #281024, 20' Lt. Gha. 5'-50" bat
R.I. #L-110 & R.I. #L-111 along Waterloo
Rd. in front of house #2052.



WHITMAN, REQUARDT & ASSOCIATES
ENGINEERS
1304 ST. PAUL ST.
BALTIMORE, MARYLAND

HOWARD COUNTY METROPOLITAN COMMISSION
8-20-69 DATE
W. O. Gilbert CHIEF ENGINEER

CONTRACT NO. 320-W

PLAN OF
WATER MAINS

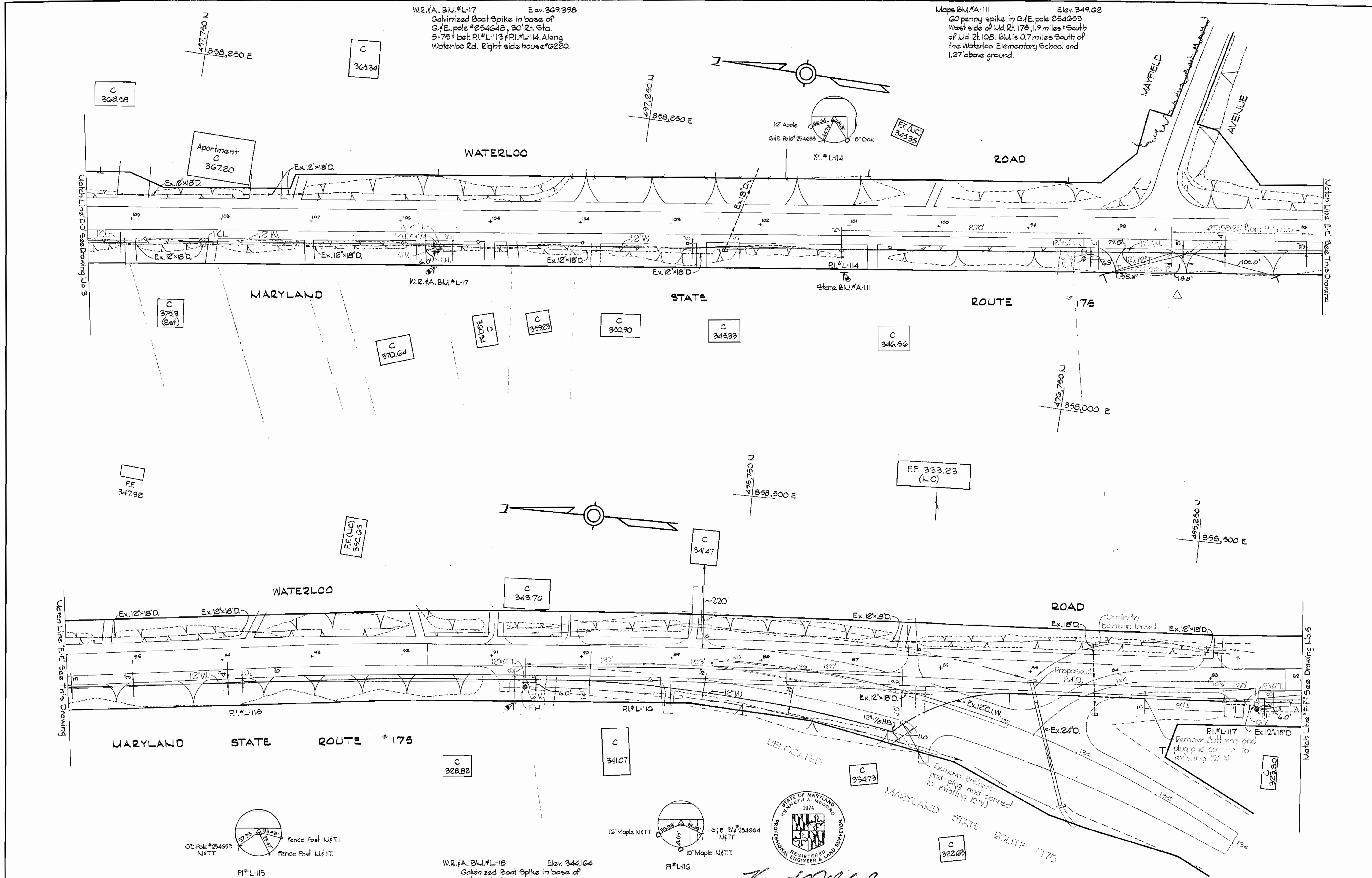
ELECTION DISTRICT
GUILFORD NO. 6

CONTRACT NO. 320-W
DRAWING NO. 3 OF 9
SCALE 1" = 50'

W. O. Gilbert

JUL 17, 1970 P.O. #4492

WS 320-W/14



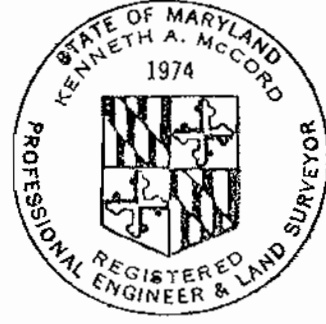
W.R. #A. B.M. #L-17 Elev. 369.398
Galvanized Boat Spike in base of
G.F.E. Pole #25464B, 30' Rt. Sta.
5+75+ bet. P.I. #L-113 & P.I. #L-114, Along
Waterloo Rd. Right side house #G220.

Maps B.M. #A-111 Elev. 349.02
60 penny spike in G.F.E. pole 254663
West side of Md. Rt. 176, 1.9 miles South
of Md. Rt. 108. B.M. is 0.7 miles South of
the Waterloo Elementary School and
1.27' above ground.

W.R. #A. B.M. #L-17

State B.M. #A-111

W.R. #A. B.M. #L-18 Elev. 344.164
Galvanized Boat Spike in base of
G.F.E. Pole #254661, 30' Rt. Sta.
3+00+ bet. P.I. #L-115 & P.I. #L-116.



Kenneth A. McCord

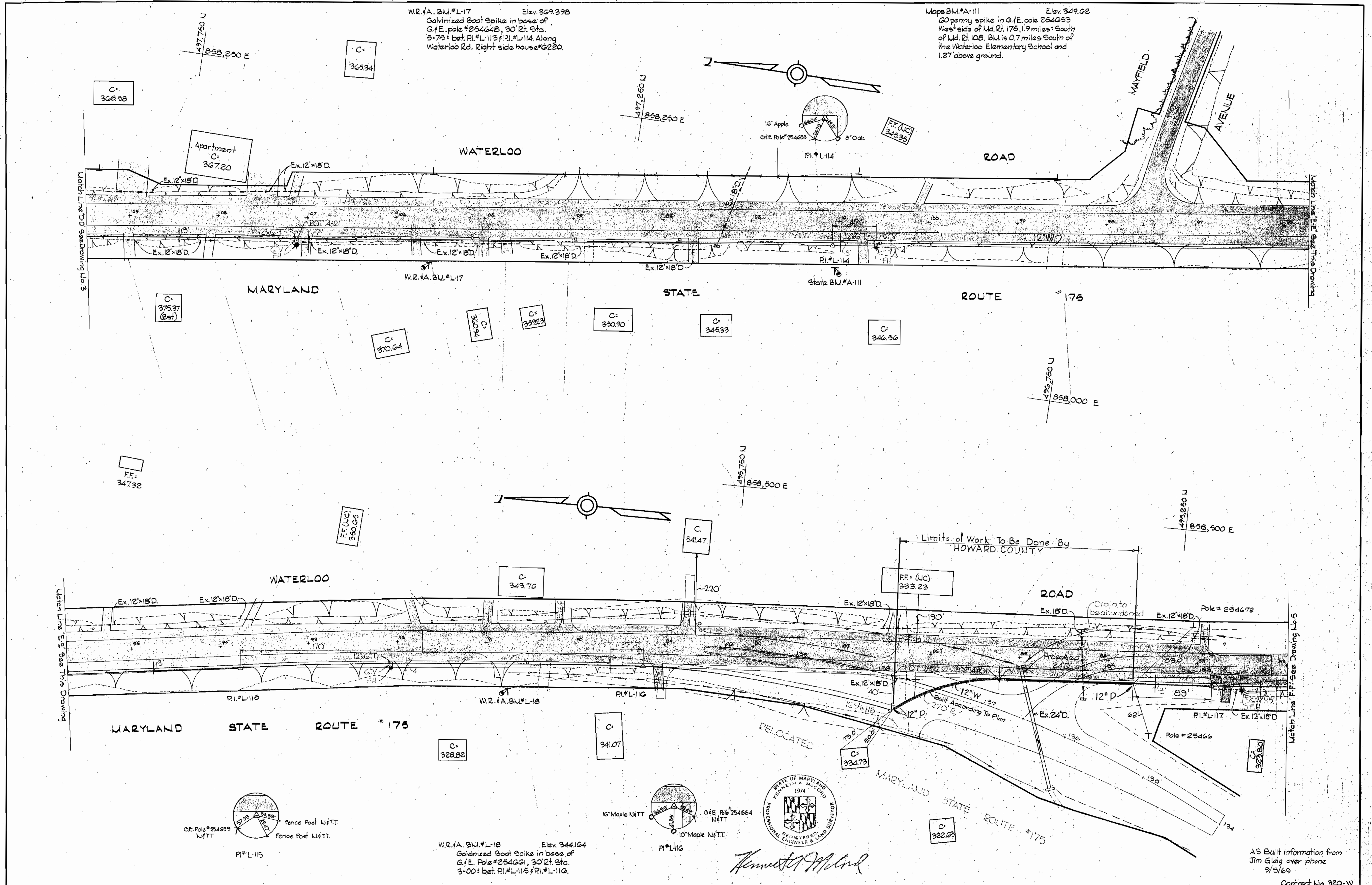
11-3-69	Added 12" x 12" T and 12" V at E. Mayfield Avenue
No. Date	Revision

WHITMAN, REQUARDT & ASSOCIATES ENGINEERS 1304 ST. PAUL ST. BALTIMORE, MARYLAND	HOWARD COUNTY METROPOLITAN COMMISSION DATE: 8-20-69 CHIEF ENGINEER: <i>W. O. GIBBS</i>	CONTRACT NO. 320-W	PLAN OF WATER MAINS	ELECTION DISTRICT GUILFORD NO. 6	DRAWING NO. 4	SCALE: 1" = 50'	Contract No. 320-W
					OF 9	495-491 496-491 497-491	

W. O. GIBBS-2

JULY 17, 1970 E.S. #4498

WS 320-W-A/4



WHITMAN, REQUARDT & ASSOCIATES
ENGINEERS
1304 ST. PAUL ST.
BALTIMORE, MARYLAND

HOWARD COUNTY METROPOLITAN COMMISSION
DATE _____

CONTRACT NO. 320-W-A

PLAN OF
WATER MAINS

ELECTION DISTRICT
GUILFORD NO. 6

DRAWING NO. 4 OF 9
SCALE 1" = 50'

AS BUILT information from Jim Gleig over phone 9/5/69

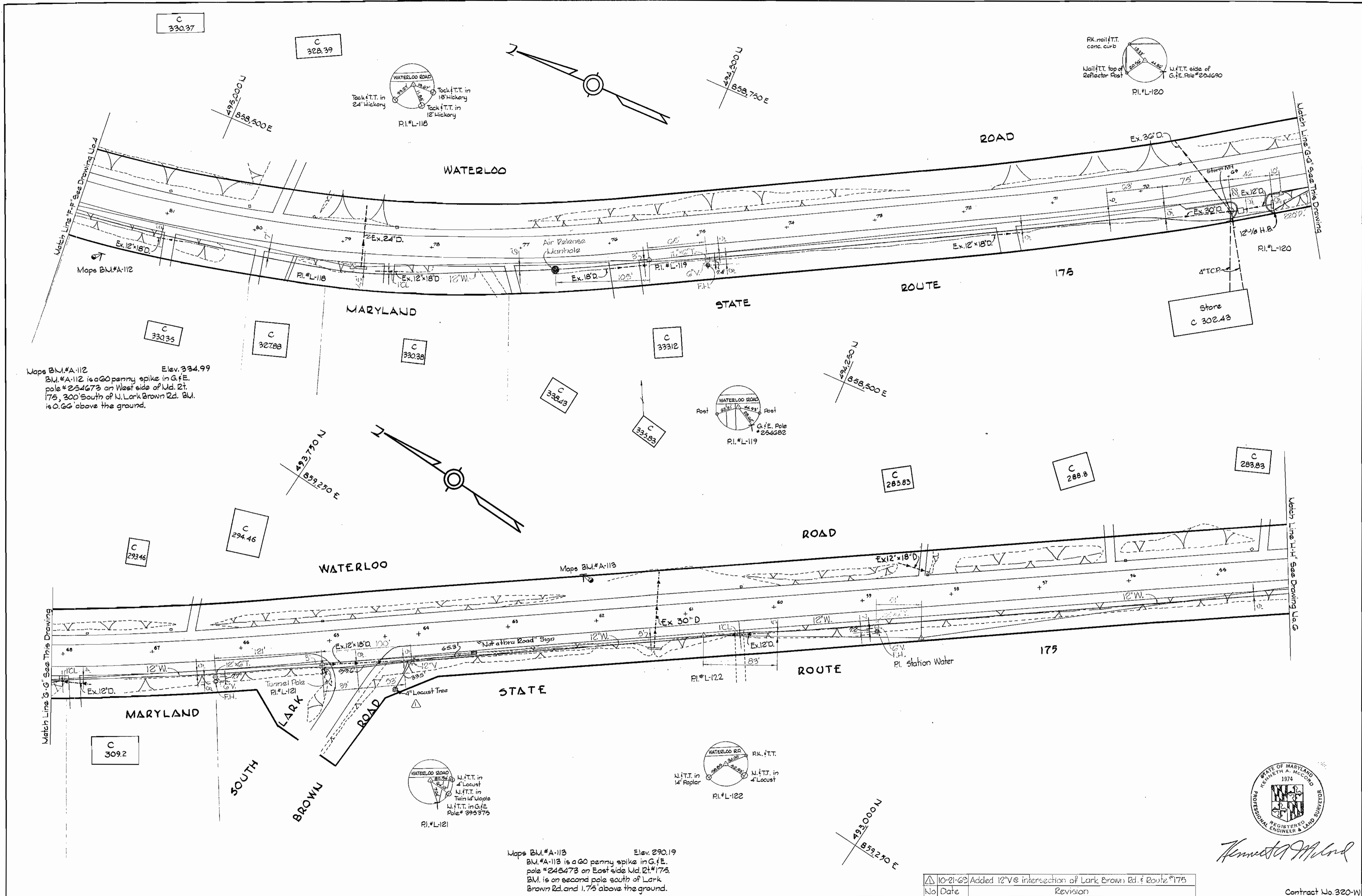
Contract No. 320-W

W. O. 6185-2

AS BUILT Nov. 26, 1969

P.B. #4192

WS 320-W/S



STATE OF MARYLAND
 KENNETH A. MCCORD
 1974
 REGISTERED
 PROFESSIONAL ENGINEER & LAND SURVEYOR

Kenneth A. McCord

10-21-69 Added 12" V intersection of Lark Brown Rd. & Route #175
 No Date Revision

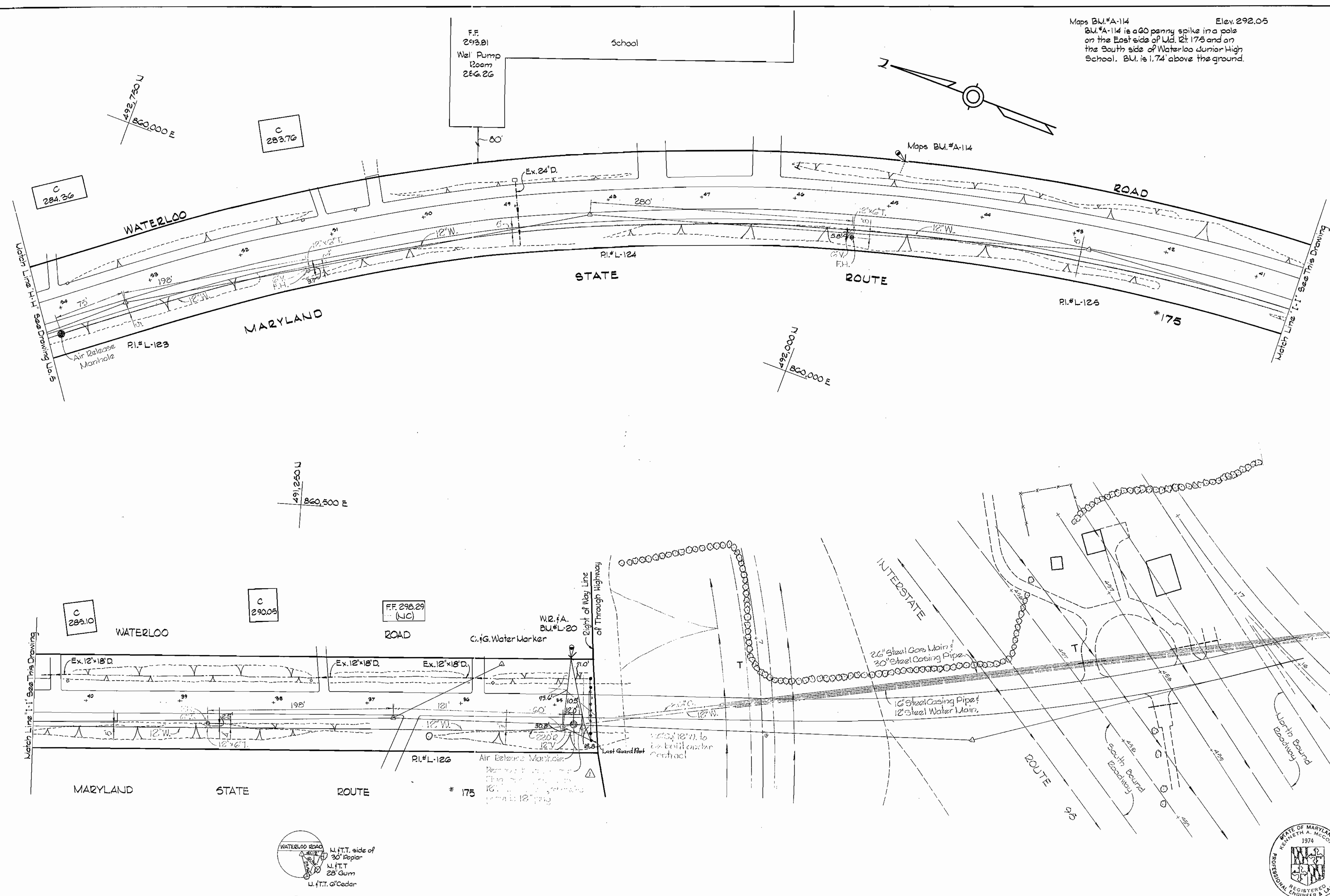
Contract No. 320-W

WHITMAN, REQUARDT & ASSOCIATES ENGINEERS 1304 ST. PAUL ST. BALTIMORE, MARYLAND	HOWARD COUNTY METROPOLITAN COMMISSION 8-20-69 DATE CHIEF ENGINEER	CONTRACT NO. 320-W	WATER MAINS	ELECTION DISTRICT GUILFORD NO. 6	DRAWING NO. 5 OF 9 SCALE 1" = 50' 493-491 494-291 495-491
---	--	--------------------	-------------	-------------------------------------	---

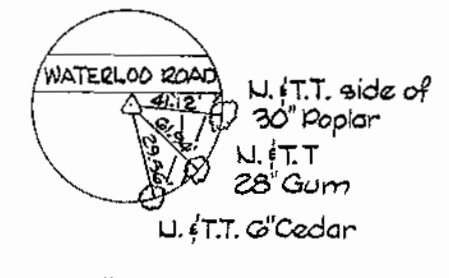
W. O. 6185-2

JULY 17, 1970

Maps BU.#A-114 Elev. 292.05
 BU.#A-114 is a 60 panny spike in a pole
 on the East side of U.I. Rt. 175 and on
 the South side of Waterloo Junior High
 School. BU. is 1.74 above the ground.

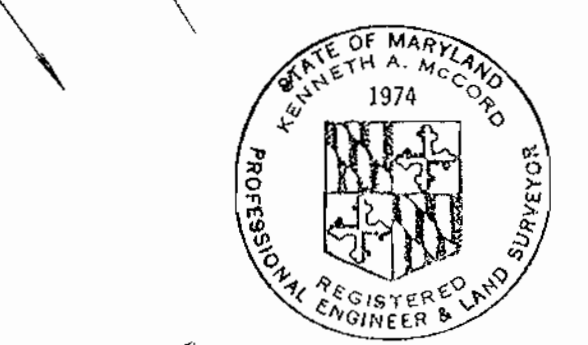


WS 320-W/6



RI.#L-126
 W.I. f.A. BM#L-20 Elev. 301.765
 Galvanized Boat Spike base G.F.E Pole #405081
 East Side MD Route #175. 65' left of sta. 1+85:
 between PI#L-126 and PI#L-127

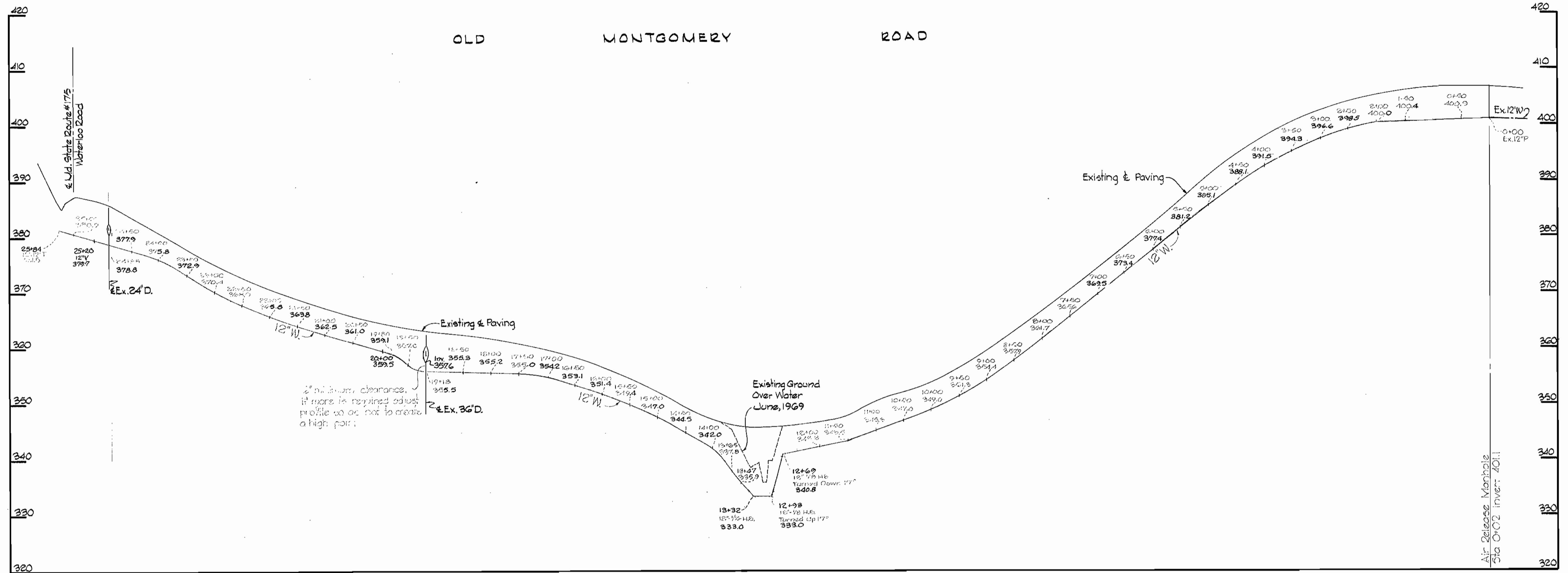
10-21-69	Add 12" V at Water Sta. 49+07
No Date:	Revision



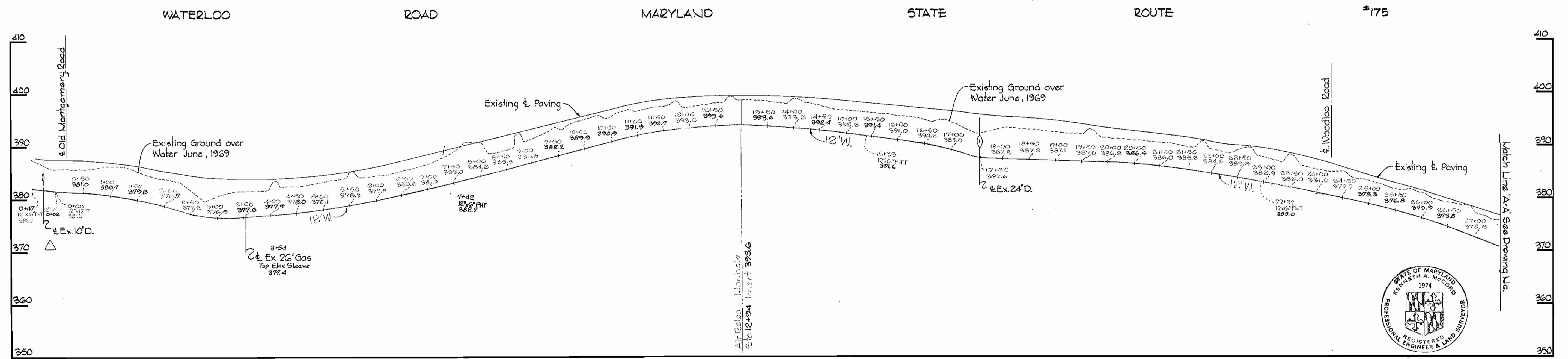
Kenneth A. McCord

WHITMAN, REQUARDT & ASSOCIATES ENGINEERS 1304 ST. PAUL ST. BALTIMORE, MARYLAND	HOWARD COUNTY METROPOLITAN COMMISSION DATE: 3-24-69 CHIEF ENGINEER: <i>[Signature]</i>	CONTRACT NO. <u>320-W</u>	PLAN OF WATER MAINS	ELECTION DISTRICT GUILFORD NO. 6	DRAWING NO. <u>6</u> OF <u>9</u>	SCALE 1" = 50' 490-492 491-495 492-492	Contract No. 320-W
					W. O. GIBBS-2		

WS 320-W/7



Air Release Manhole Sta. 0+02 Invert: 401.1



Keith A. McCoy

No.	Date	Revision
10-21-69		Added 12" V at intersection of Old Montgomery Rd & 121#175

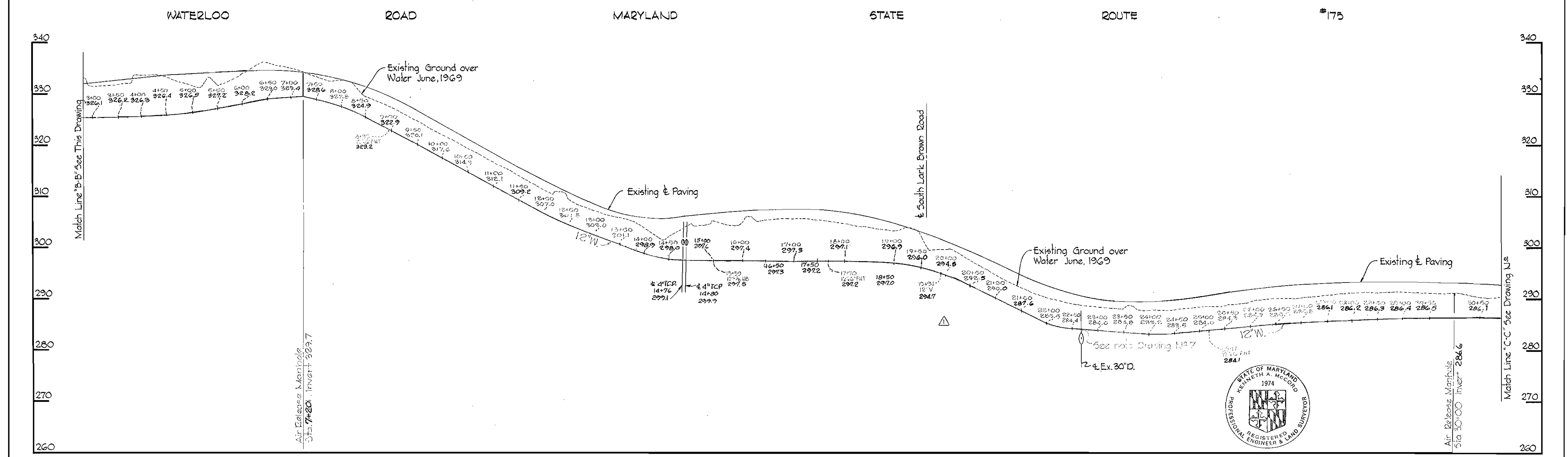
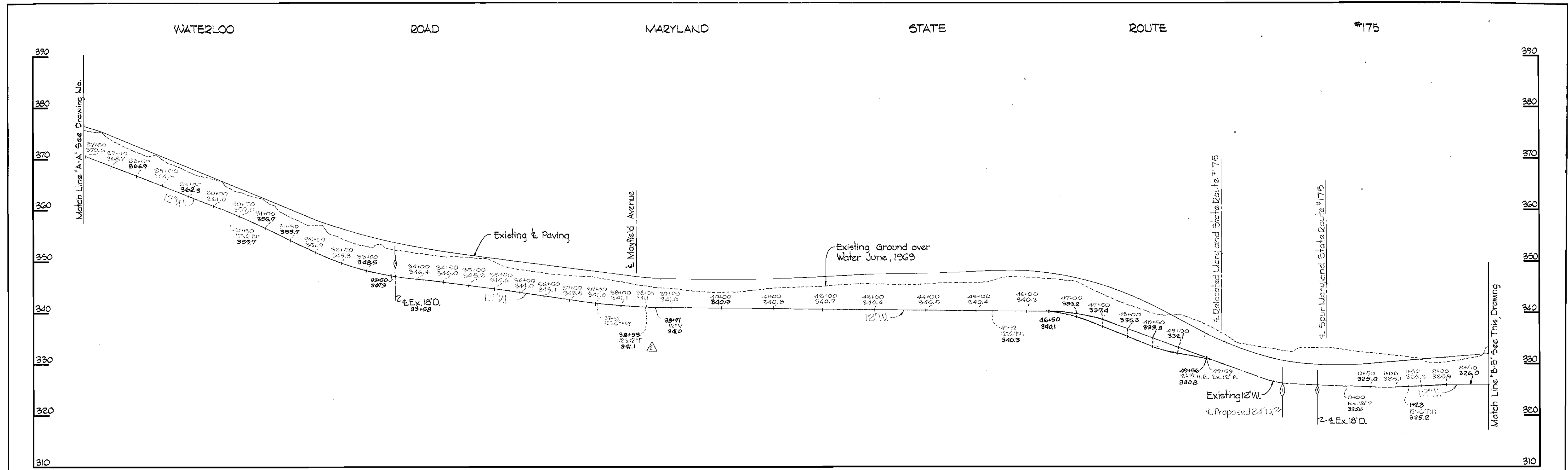
Contract No. 320-W

WHITMAN, REQUARDT & ASSOCIATES ENGINEERS 1304 ST. PAUL ST. BALTIMORE, MARYLAND	HOWARD COUNTY METROPOLITAN COMMISSION 8-20-69 <i>W O Felber</i> DATE CHIEF ENGINEER	CONTRACT NO. 320-W	PROFILES OF WATER MAINS	ELECTION DISTRICT GUILFORD NO. 6	DRAWING NO. 7	SCALE H:V = 100
					OF 9	V:1"=10'

W. O. 6185-2

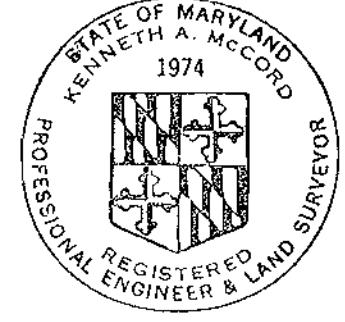
JULY 17, 1970 AS BUILT

WS 320-W/8



11-3-69	Added 12"x12" T and 12" V at E Mayfield Avenue
10-21-69	Added 12" V at Sta 19+91
No.	Date:
	Revision

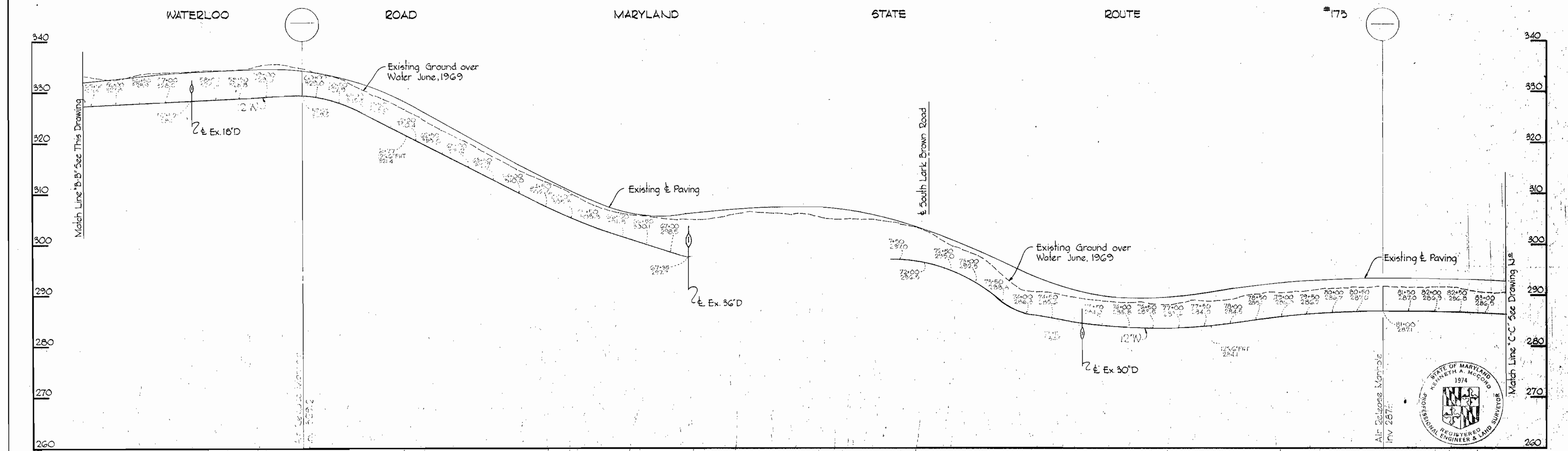
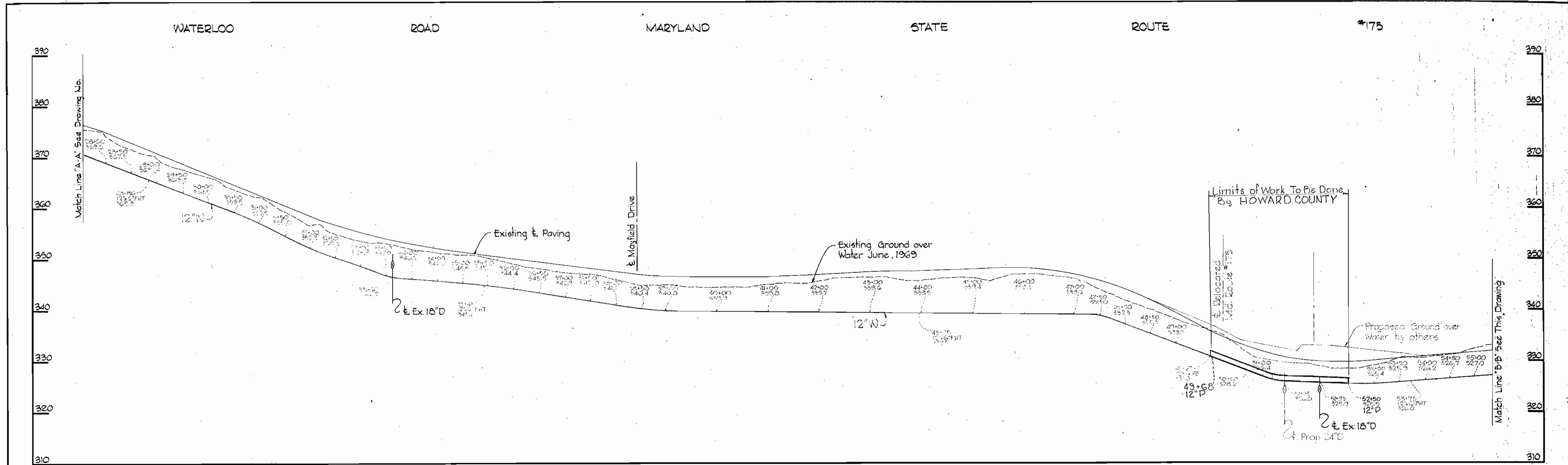
Kenneth A. McLeod



WHITMAN, REQUARDT & ASSOCIATES ENGINEERS 1304 ST. PAUL ST. BALTIMORE, MARYLAND	HOWARD COUNTY METROPOLITAN COMMISSION DATE: 8-20-69 CHIEF ENGINEER: W O Fellner	CONTRACT NO. 320-W	PROFILES OF WATER MAINS	ELECTION DISTRICT GUILFORD NO. 6	DRAWING NO. 8 OF 9	SCALE H:1"=100' V:1"=10'
	W. O. 6185-2					

JUL 17, 1970

WS 320-W-A/8



WHITMAN, REQUARDT & ASSOCIATES
 ENGINEERS
 1304 ST. PAUL ST.
 BALTIMORE, MARYLAND

HOWARD COUNTY METROPOLITAN COMMISSION
 DATE _____ CHIEF ENGINEER _____

CONTRACT NO. 320-W-A

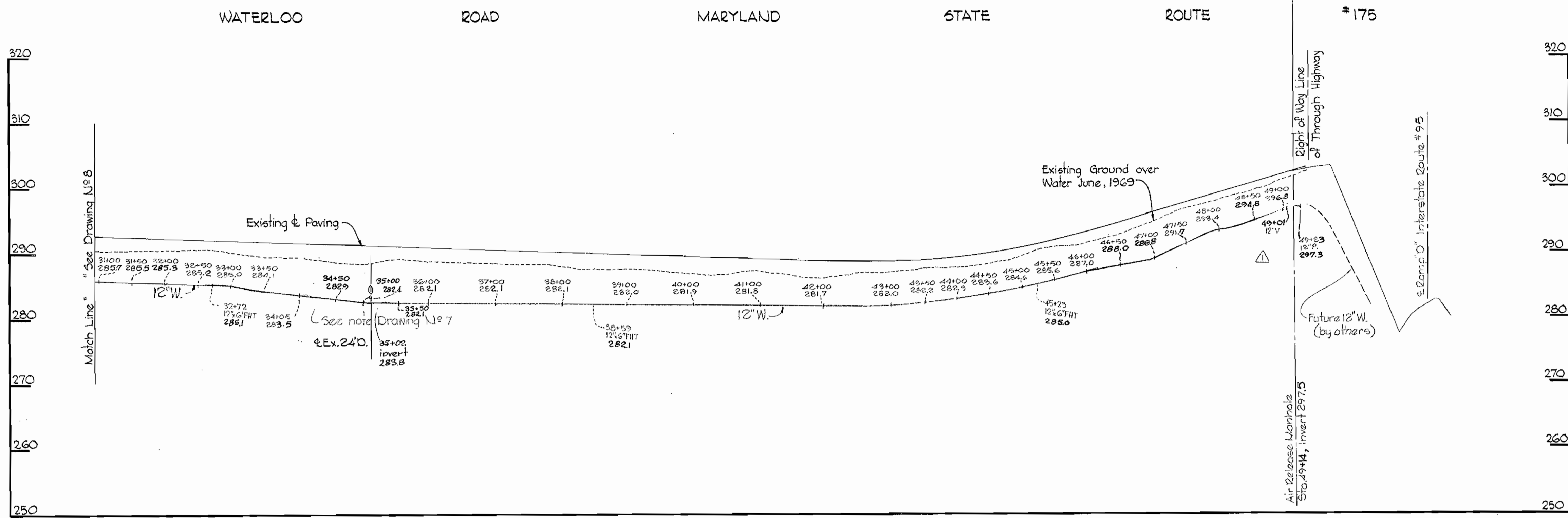
PROFILES OF
 WATER MAINS

ELECTION DISTRICT
 GUILFORD NO. 6

DRAWING NO. 8 OF 9 SCALE 1"=50'

W. O. 6185-2

AS BUILT Nov. 26, 1969



WS 320-W/9



Kenneth A. McCord

△	10-21-69	Added 12" V at Sta 49+07
No	Date	Revision

Contract No. 320-W

WHITMAN, REQUARDT & ASSOCIATES ENGINEERS 1304 ST. PAUL ST. BALTIMORE, MARYLAND	HOWARD COUNTY METROPOLITAN COMMISSION 8-20-69 <i>W O Felbert</i> DATE CHIEF ENGINEER	CONTRACT NO. 320-W	PROFILES OF WATER MAINS	ELECTION DISTRICT GUILFORD NO 6	DRAWING NO. 9	SCALE H:1"=100'
					OF 9	V:1"=10'

W. O. G185-2

JUL 17, 1970