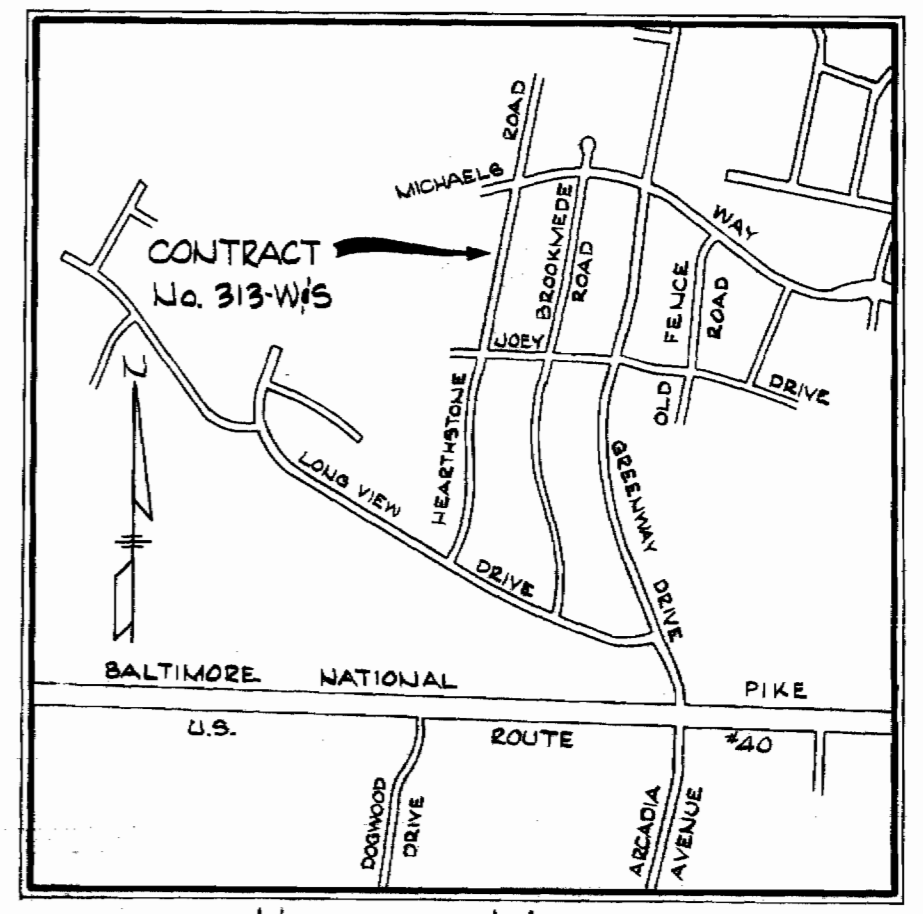
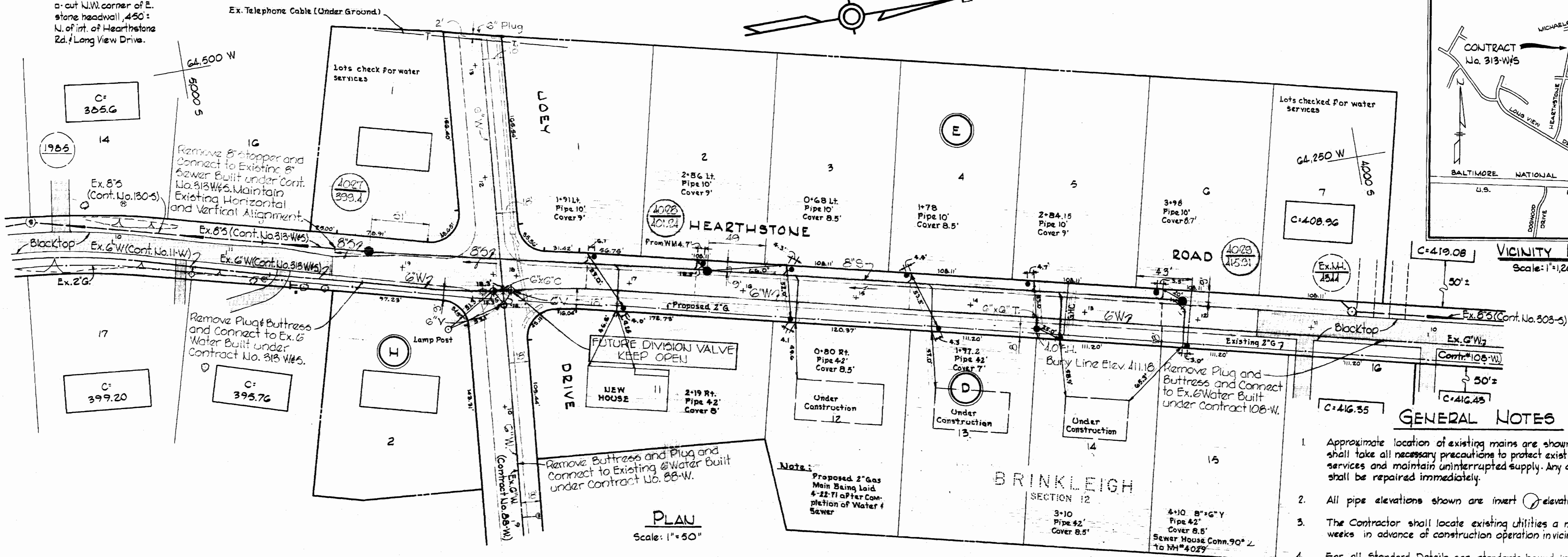


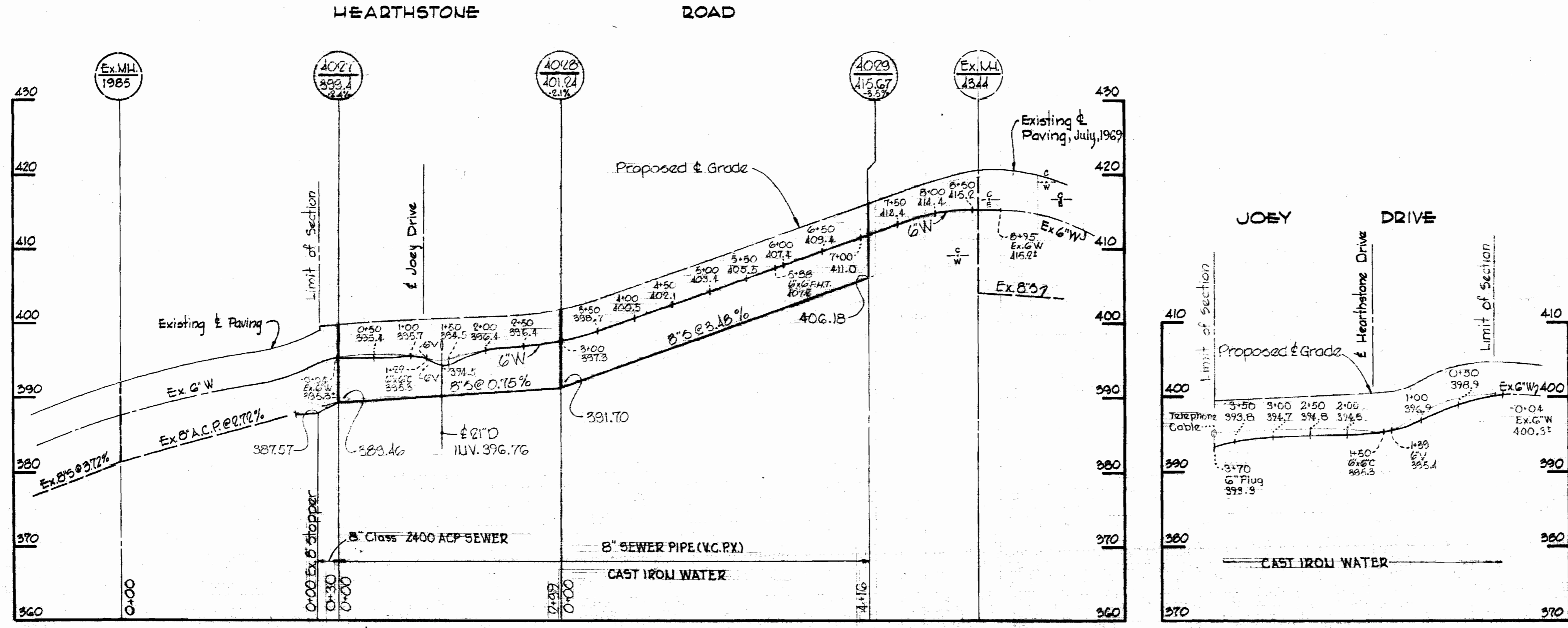
W.R. (A. B.M.) 51-F-7 Elev. 377.71
 a-cut N.W. corner of E. stone headwall, 450' N. of int. of Hearthstone Rd. & Long View Drive.



GENERAL NOTES

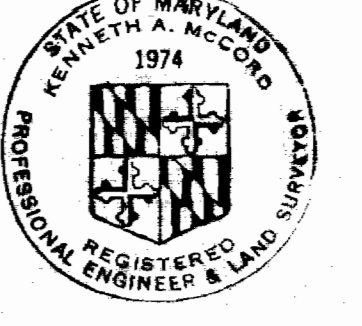
1. Approximate location of existing mains are shown. The Contractor shall take all necessary precautions to protect existing mains and services and maintain uninterrupted supply. Any damage incurred shall be repaired immediately.
2. All pipe elevations shown are invert elevations.
3. The Contractor shall locate existing utilities a minimum of two weeks in advance of construction operation in vicinity of utilities.
4. For all Standard Details see standards bound in Specifications.
5. All water mains to have a minimum of 3/8" cover.
6. Block all fittings with concrete, see standard details bound in Specifications.
7. Bury line elevations on fire hydrants shall be set to elevations shown on drawings.
8. All Fire Hydrants shall be strapped to tee and shall be buttressed with concrete in accordance with Standards Details.
9. Clear all utilities by a minimum of 6", clear all poles by 2'-0" minimum or tunnel as required.
10. The Contractor shall provide a joint in all sewer mains within 2'-0" of exterior manhole walls.
11. All sewer pipe shall be VCPX, CSPX, or ACP Class 2400.
12. All Horizontal and Vertical Controls are base on Howard County Datum.

PLAN
 Scale: 1" = 50'



PROFILE
 Scale: Horiz: 1" = 100'
 Vert: 1" = 10'

QUANTITIES	
Item	Quantity
6" Water Mains	1,270'
8" Sewer Mains	750'
Fire Hydrants	1



Kenneth A. McCord

STAKEOUT & DIARY IN FIELD BOOK # 4932

Brinkleigh Section No. 12
 Contract No. 313-W45

WHITMAN, REQUARDT & ASSOCIATES
 ENGINEERS
 1304 ST. PAUL ST.
 BALTIMORE, MARYLAND

HOWARD COUNTY METROPOLITAN COMMISSION
 1-25-71
 DATE

CONTRACT NO. 313-W45

**PLAN & PROFILES OF
 WATER & SEWER MAINS**

**ELECTION DISTRICT
 ELLICOTT CITY No. 2**

**DRAWING
 NO. 1
 OF 1**

**SCALE
 AS
 SHOWN**

WS 313-W45/1