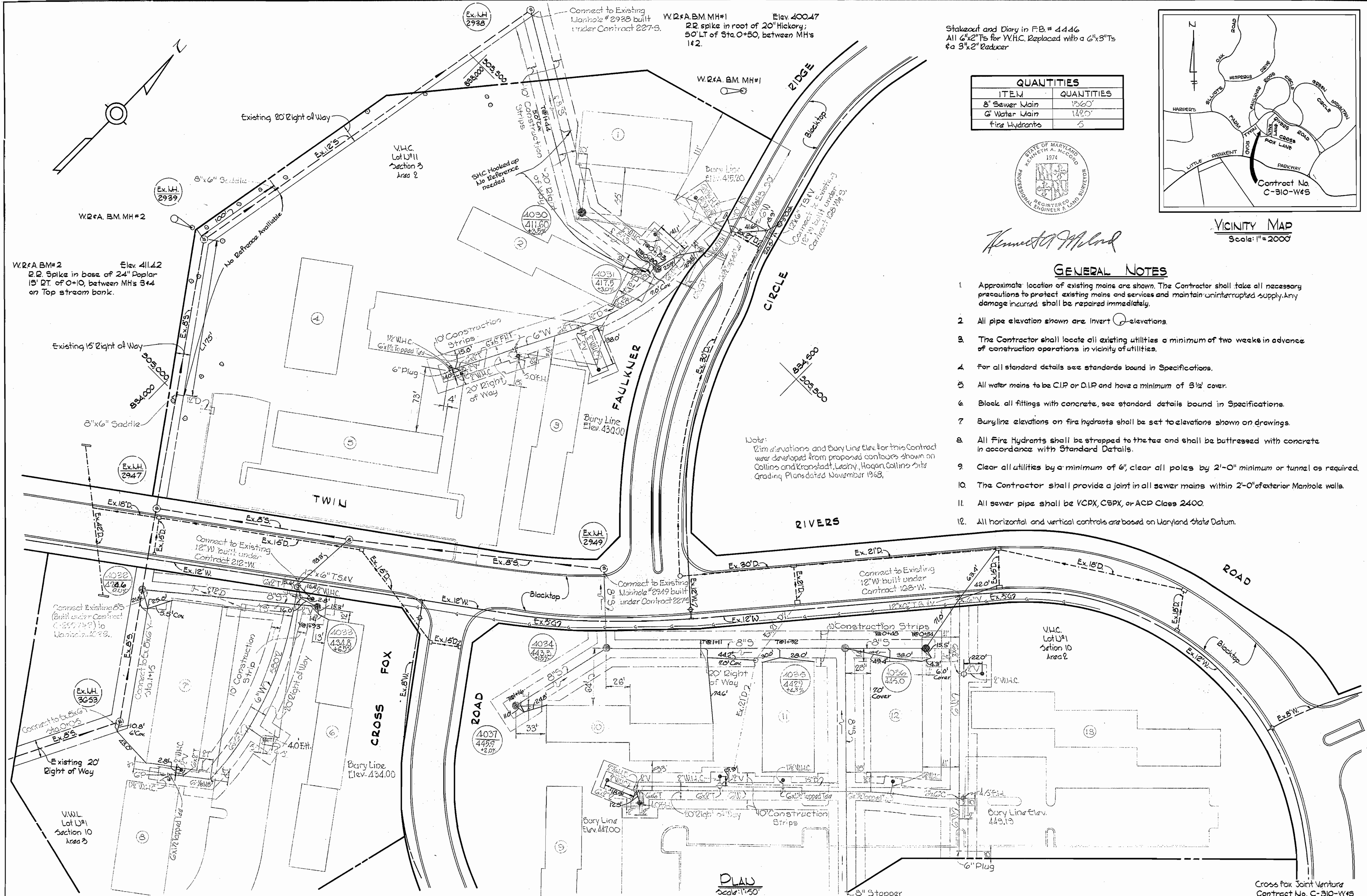
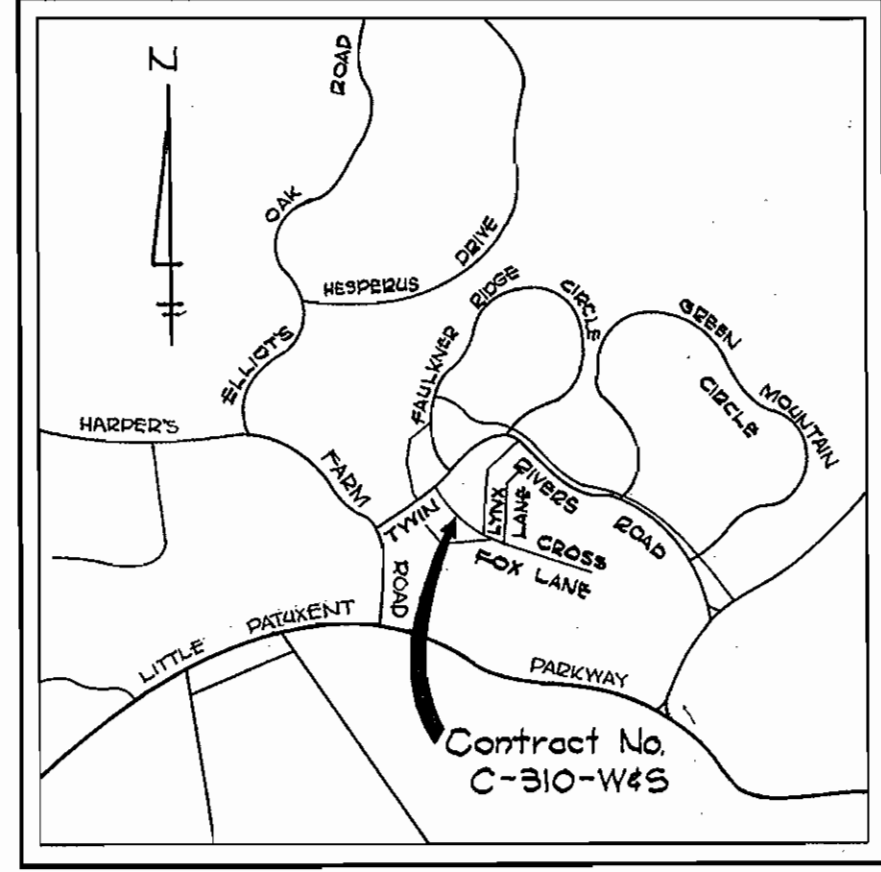


WS 310-W4S/1



QUANTITIES	
ITEM	QUANTITIES
8" Sewer Main	1365'
6" Water Main	1825'
Fire Hydrants	5



VICINITY MAP
Scale: 1" = 2000'

Kenneth A. McLeod

GENERAL NOTES

1. Approximate location of existing mains are shown. The Contractor shall take all necessary precautions to protect existing mains and services and maintain uninterrupted supply. Any damage incurred shall be repaired immediately.
2. All pipe elevation shown are Invert \ominus elevations.
3. The Contractor shall locate all existing utilities a minimum of two weeks in advance of construction operations in vicinity of utilities.
4. For all standard details see standards bound in Specifications.
5. All water mains to be C.I.P. or D.I.P. and have a minimum of 3 1/2' cover.
6. Block all fittings with concrete, see standard details bound in Specifications.
7. Buryline elevations on fire hydrants shall be set to elevations shown on drawings.
8. All Fire Hydrants shall be strapped to the tee and shall be buttressed with concrete in accordance with Standard Details.
9. Clear all utilities by a minimum of 6', clear all poles by 2'-0" minimum or tunnel as required.
10. The Contractor shall provide a joint in all sewer mains within 2'-0" of exterior Manhole walls.
11. All sewer pipe shall be VCPX, C6PX, or ACP Class 2400.
12. All horizontal and vertical controls are based on Maryland State Datum.

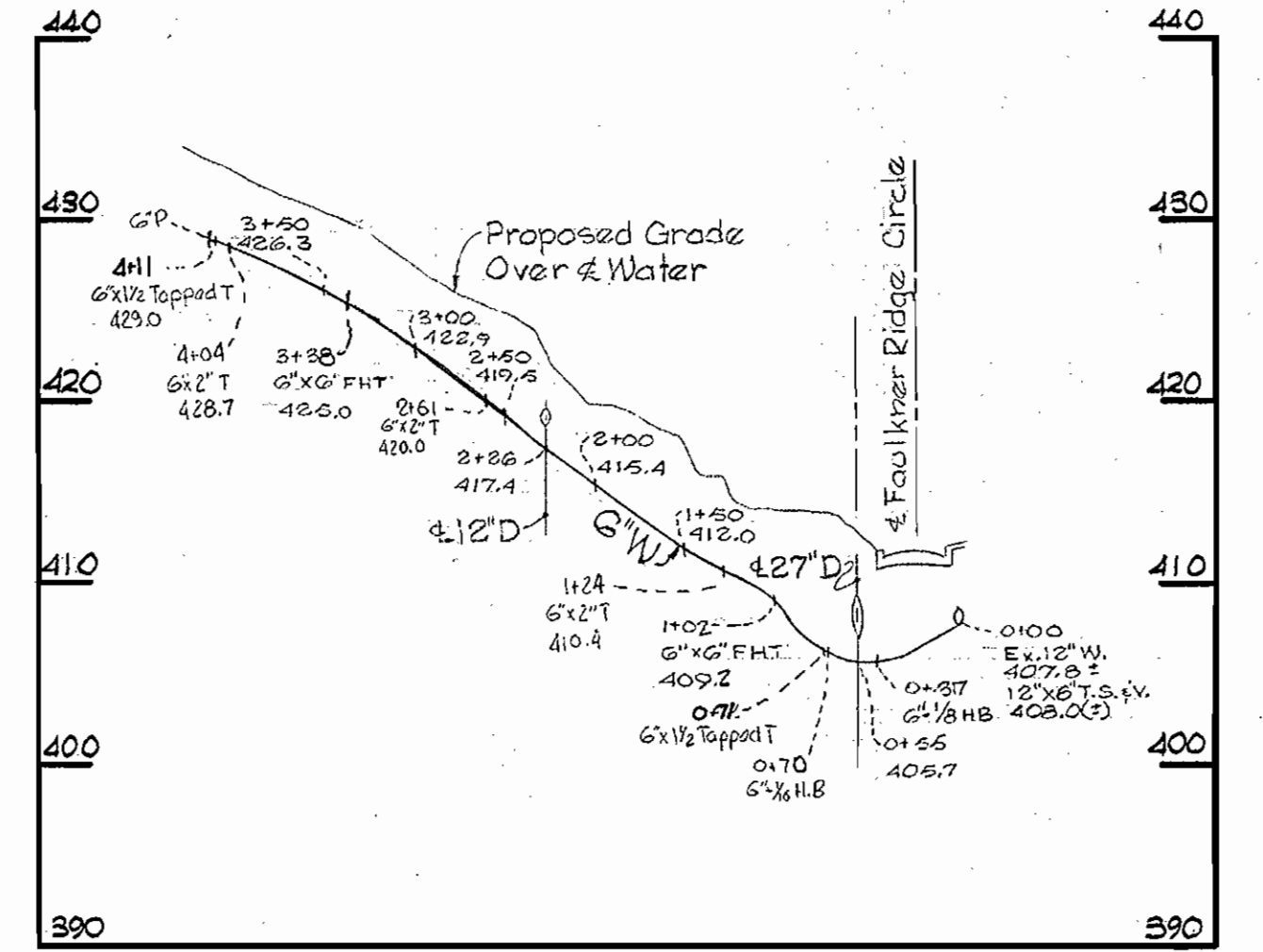
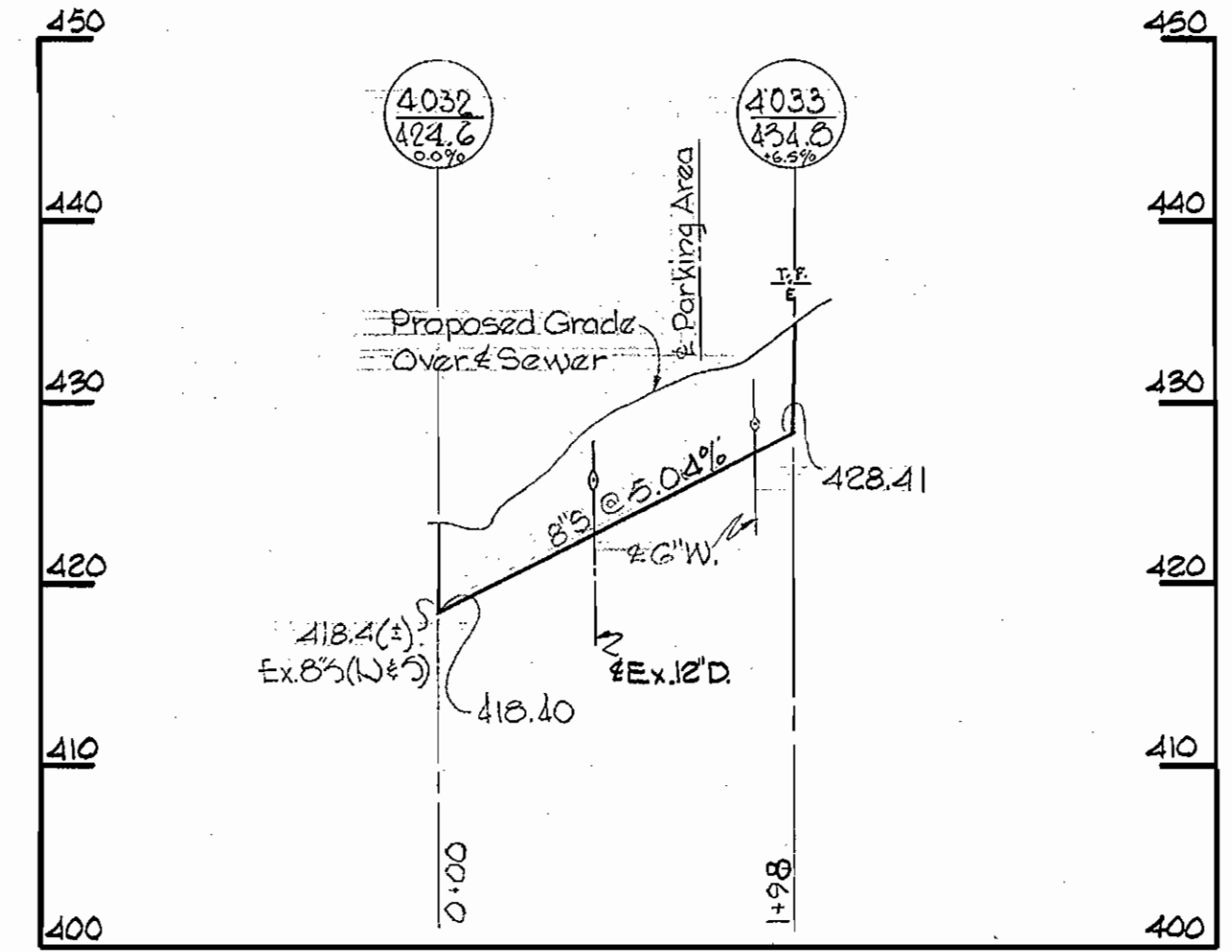
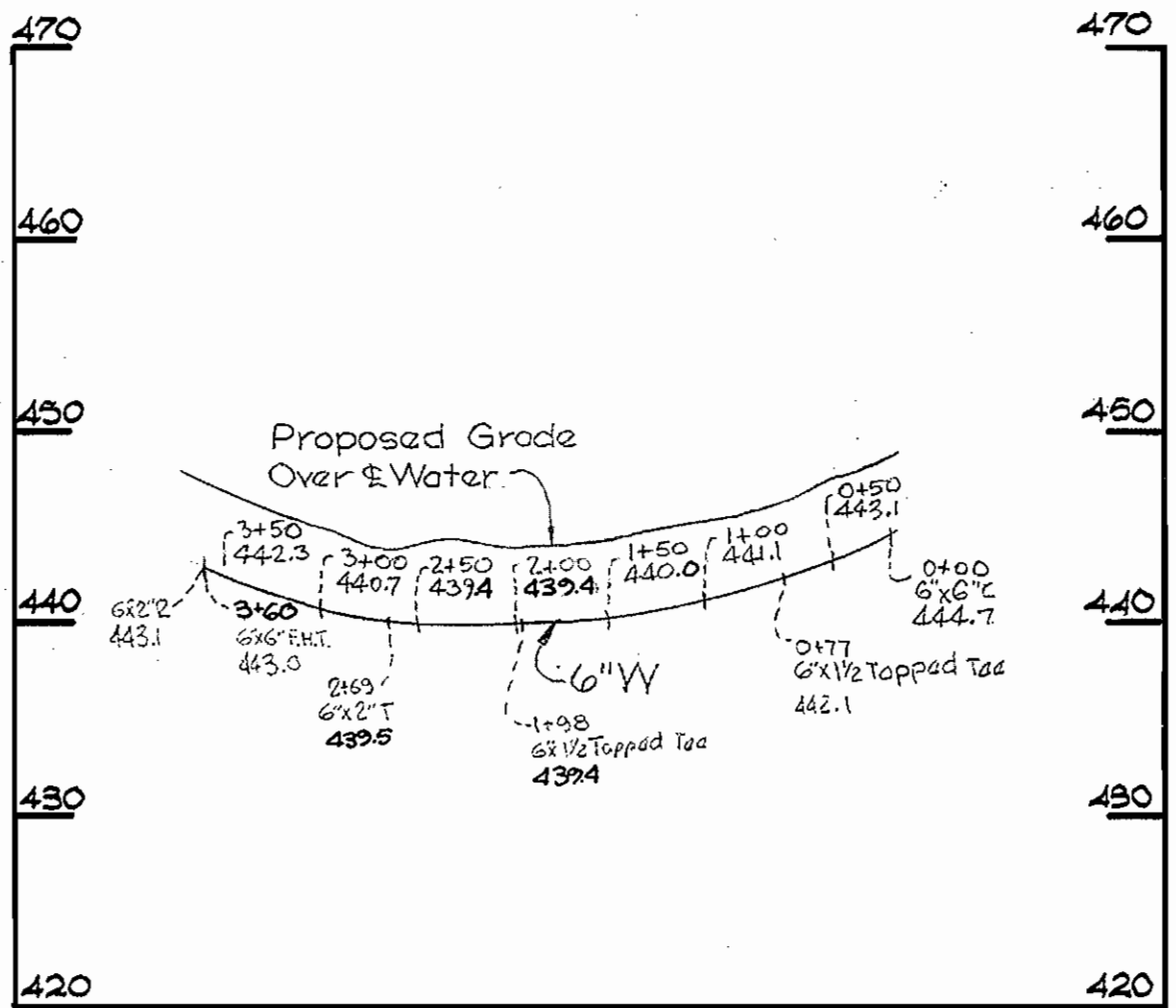
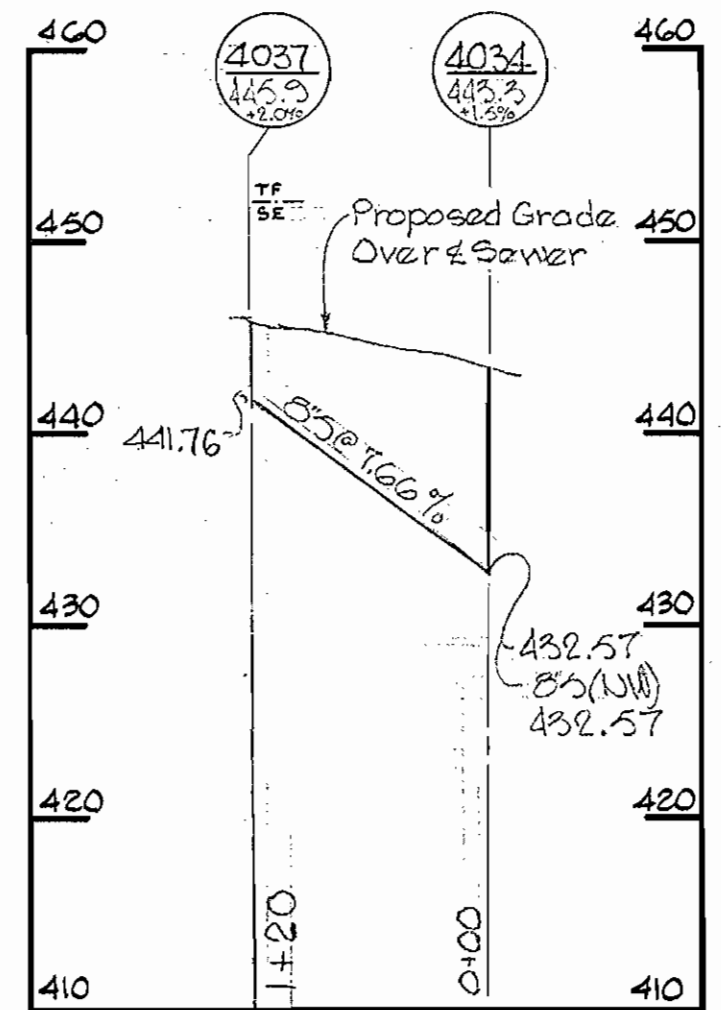
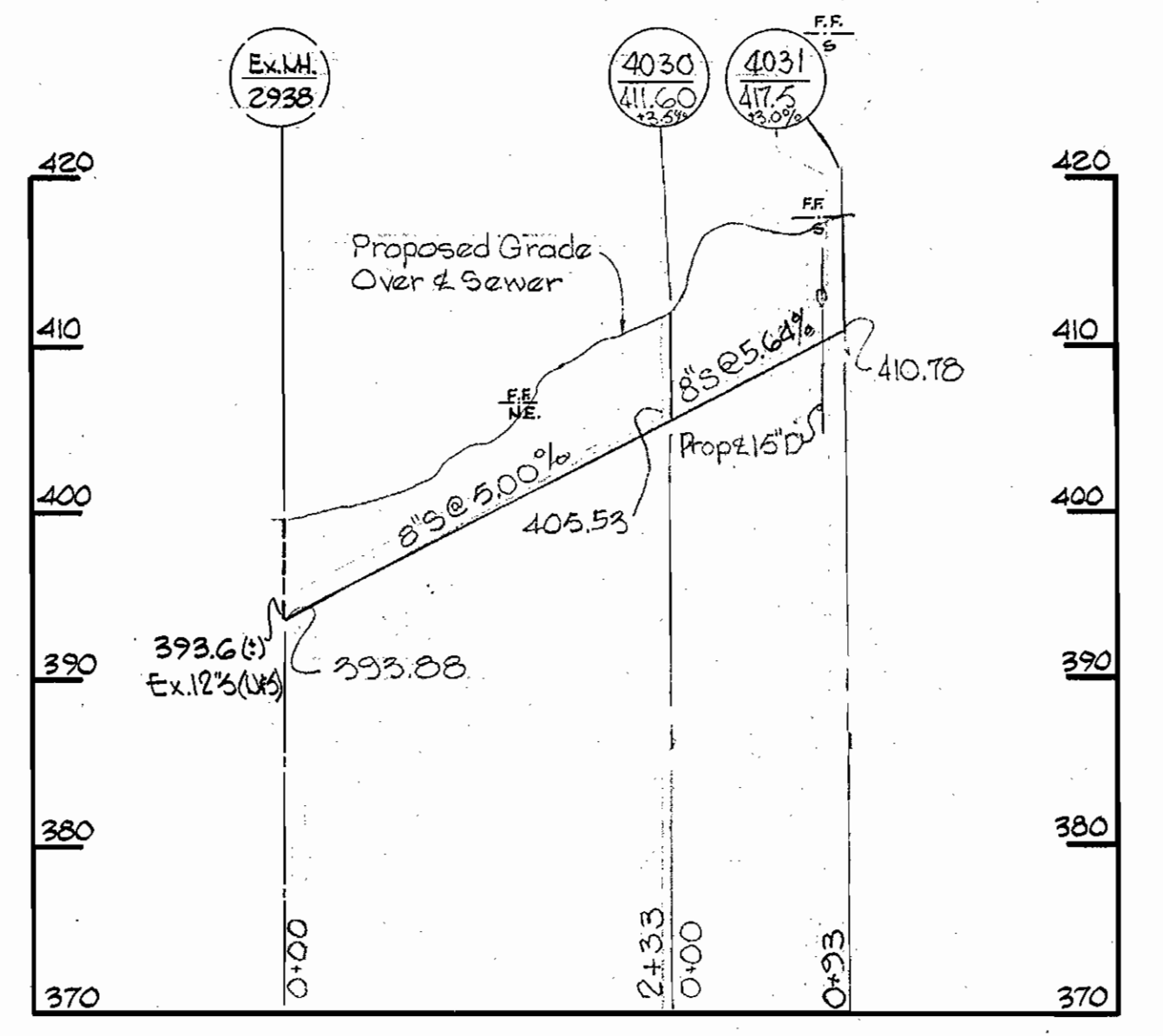
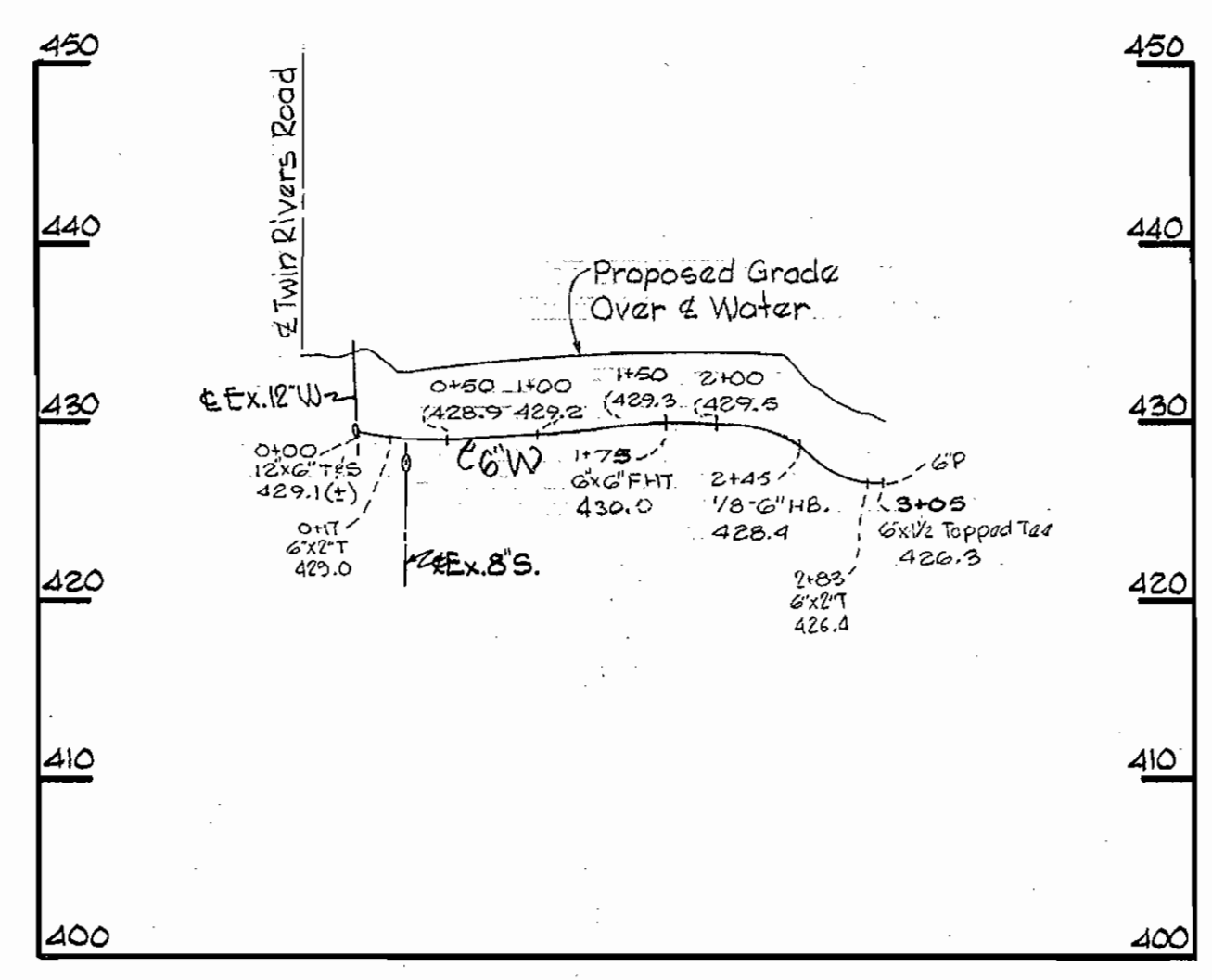
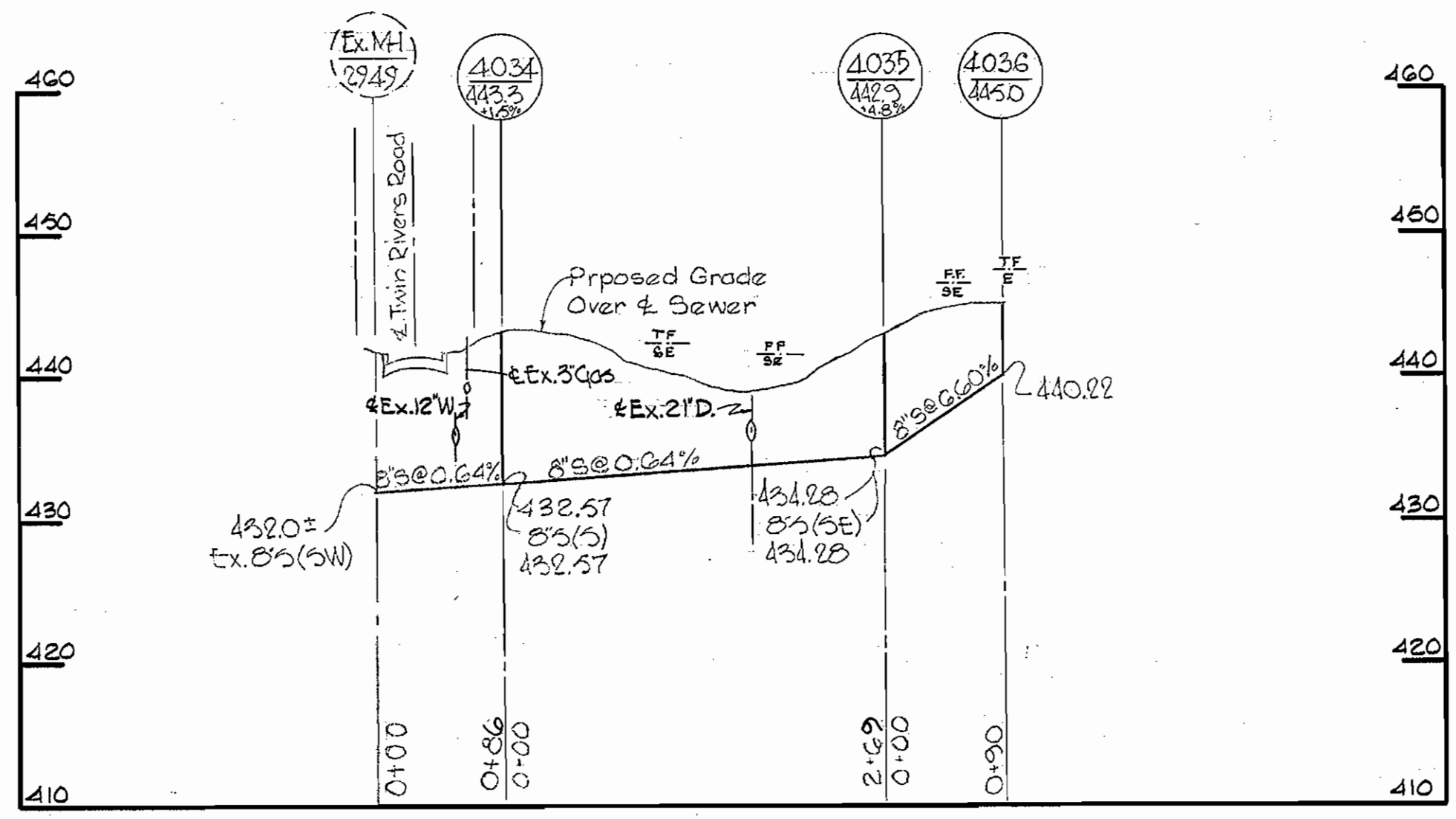
Note:
Elevations and Bury Line Elev. for this Contract was developed from proposed contours shown on Collins and Kronstadt, Leary, Hogan, Collins City Grading Plans dated November 1968.

PLAN
Scale: 1" = 50'

WHITMAN, REQUARDT & ASSOCIATES ENGINEERS 1304 ST. PAUL ST. BALTIMORE, MARYLAND	HOWARD COUNTY METROPOLITAN COMMISSION <i>C. J. ...</i> DATE	CONTRACT NO. C-310-W4S	PLAN OF WATER & SEWER MAINS	COLUMBIA VILLAGE OF HARPER'S CHOICE ELECTION DISTRICT CLARKVILLE NO. 5	DRAWING NO. 1	SCALE AS SHOWN
					OF 2	504-477 505-477, 478

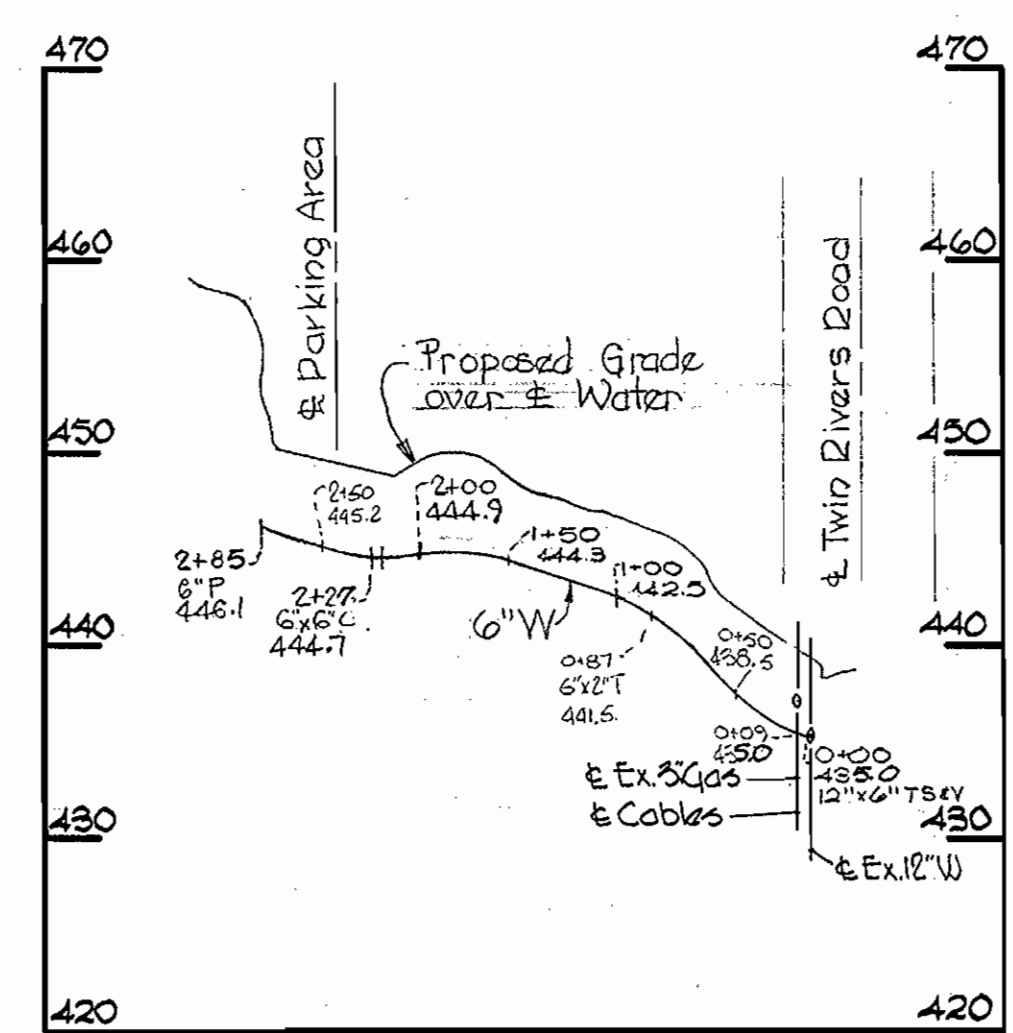
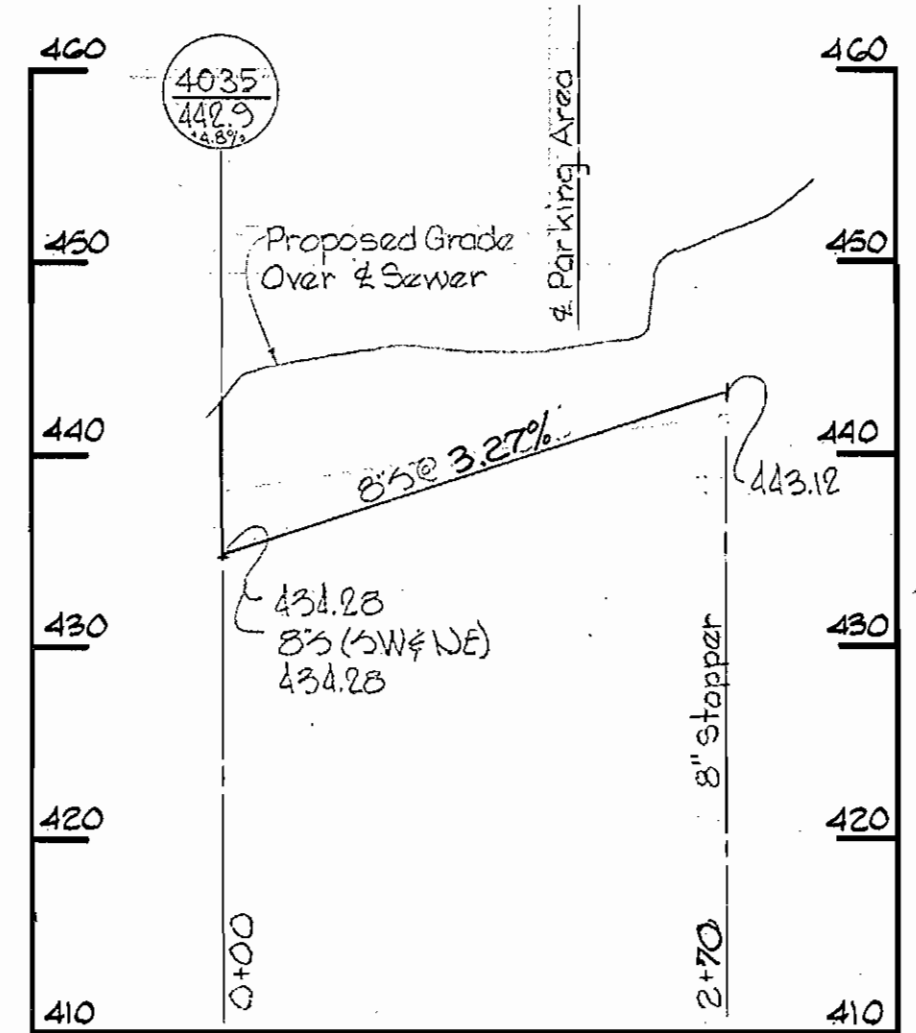
W. O. 6023-2

Feb 4, 1970 AS BUILT



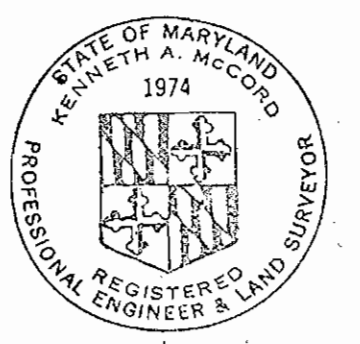
V.W.L.
Lot 1, Section 10, Area 2

V.H.C.
Lot 1, Section 10, Area 2



V.H.C. Lot 1 Section 10 Area 2

All Sewer Pipe - AC Class 2400
All Water Pipe - Cast Iron



Kenneth A. McLeod

Cross Fox Joint Venture
Contract U.C.310 W&S

WHITMAN, REQUARDT & ASSOCIATES
ENGINEERS
1304 ST. PAUL ST.
BALTIMORE, MARYLAND

HOWARD COUNTY METROPOLITAN COMMISSION
DATE 6-24-89 *W.O. Fallick*
CHIEF ENGINEER

CONTRACT NO. C-310-W&S

PROFILES OF
WATER & SEWER MAINS

COLUMBIA
VILLAGE OF HARPER'S CHOICE
ELECTION DISTRICT CLARKVILLE NO. 5

DRAWING NO. 2 OF 2
SCALE H:1"=100'
V:1"=10'

W. O. 6023-2

Feb. 4, 1970 AS BUILT

WS 310-W&S/2