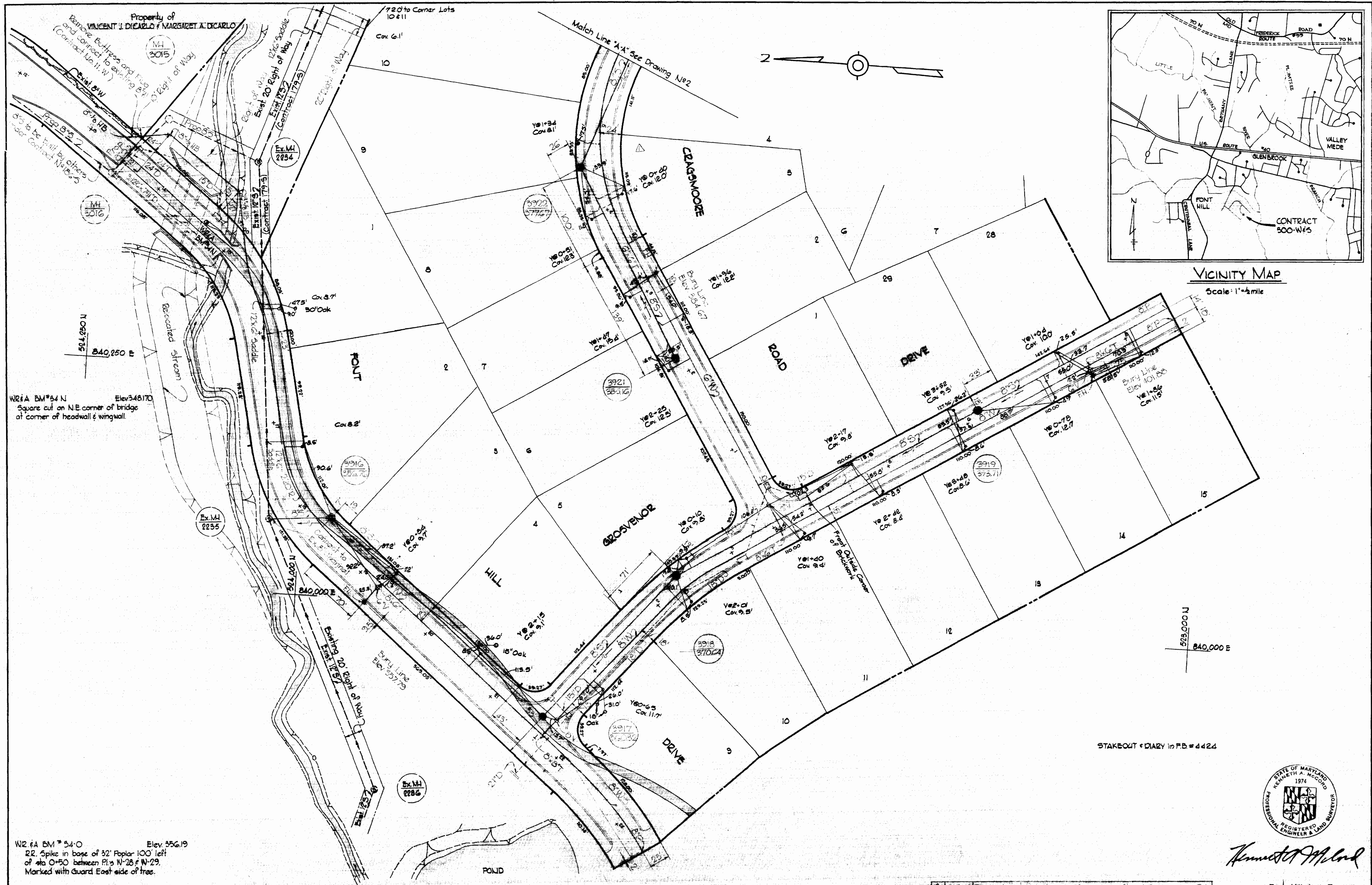


WS 300 W-5/1



W26A BM*64 N Elev 348.170
Square cut on N.E. corner of bridge
at corner of headwall & wingwall.

W26A BM*54-O Elev 356.19
R.R. Spike in base of 32' Poplar 100' left
of sta 0+50 between P.I.'s N-28 & N-29.
Marked with Guard East side of tree.

STAKEOUT & DIARY in FB # 4424

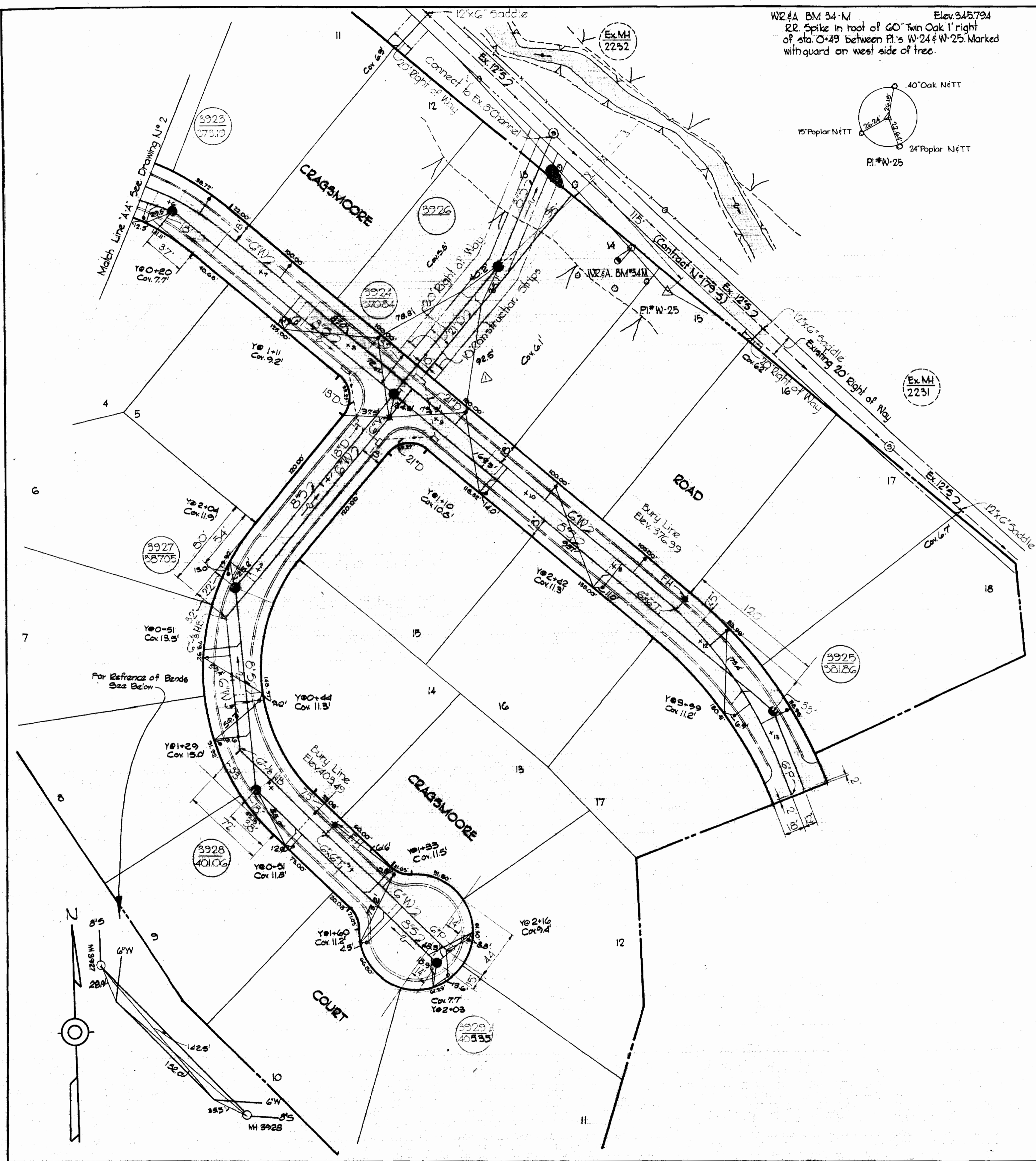


Kenneth A. McLeod

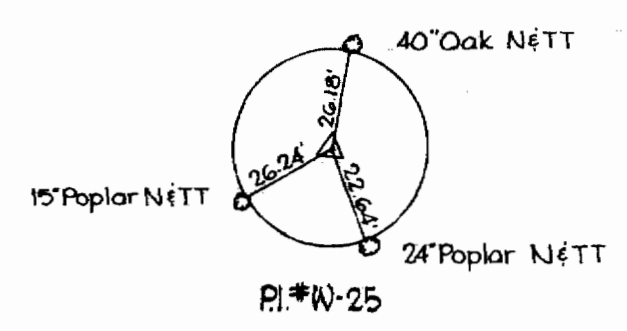
WHITMAN, REQUARDT & ASSOCIATES ENGINEERS 1304 ST. PAUL ST. BALTIMORE, MARYLAND	HOWARD COUNTY METROPOLITAN COMMISSION APRIL 22, 1969 <i>W. O. Palbert</i> CHIEF ENGINEER	CONTRACT NO. 300-WBS	PLAN OF WATER & SEWER MAINS	6-12-69 Revised water and sewer Cragmoore Ct and Cragmoore Rd Date: Revision:	Font Hill Area II Contract No. 300-W/5	DRAWING NO. 1 OF 3	SCALE 1"=50' <small>224-481 525-481 525-480</small>
						W. O. 6024-2	FB 4096 Dec. 4, 1963 AS BUILT

GENERAL NOTES

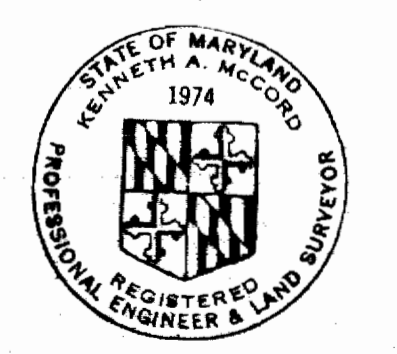
1. Approximate location of existing mains are shown. The Contractor shall take all necessary precautions to protect existing mains and services and maintain uninterrupted supply. Any damage incurred shall be repaired immediately.
2. All pipe elevations are invert \odot elevations.
3. The Contractor shall locate existing utilities a minimum of two weeks in advance of construction operations in vicinity of utilities.
4. For all standard details see standards bound in Specifications.
5. All water mains to be CIP or DIP and have a minimum of 3 1/2' cover.
6. Block all fittings with concrete. See standards bound in Specifications.
7. Bury Line elevations on fire hydrants shall be set to the elevations shown on the drawings.
8. All fire hydrants shall be strapped and buttressed in accordance with Standard Details.
9. Cost of strapping fire hydrants and valves to trees to be included in the unit price bid for furnishing and laying of water mains.
10. Clear all utilities by a minimum of 6', clear all poles by 2'-0" minimum or tunnel as required.
11. All manholes to be 4'-0" inside diameter.
12. The Contractor shall provide a joint in all sewer mains within 2'-0" of exterior manhole walls.
13. Brick manholes shall have 12" walls as called for on the profiles.
14. All horizontal and vertical controls are in Maryland State Datum. (Add 1.75' to elevations shown on this contract to equal developer's datum.)



WM #A BM 34-M Elev. 345.794
 RR Spike in root of 60" Twin Oak 1' right
 of sta. O+49 between P.I.'s W-24 & W-25. Marked
 with guard on west side of tree.



WS 300WS/2



Kenneth A. McCord
 REGISTERED ENGINEER & LAND SURVEYOR

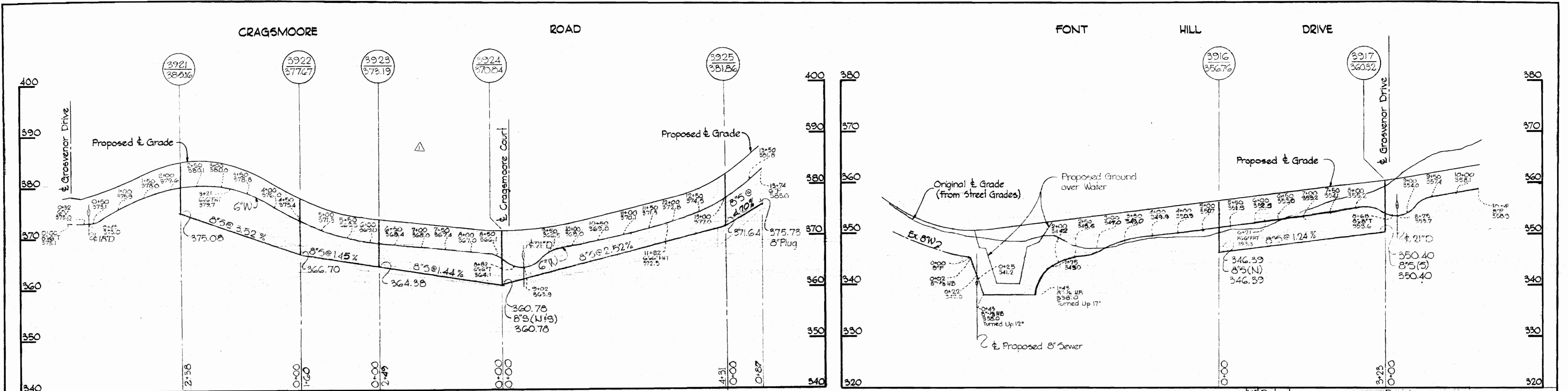
6-12-69 Revised water and sewer Cragmoore Ct and Cragmoore Rd.
 Date: Revision

Font Hill 11
 Contract No 300-W#5

WHITMAN, REQUARDT & ASSOCIATES ENGINEERS 1304 ST. PAUL ST. BALTIMORE, MARYLAND	HOWARD COUNTY METROPOLITAN COMMISSION APRIL 22, 1969 DATE <i>W. O. Pulbert</i> CHIEF ENGINEER	CONTRACT NO. 300-WBS	PLAN OF WATER & SEWER MAINS	ELECTION DISTRICT ELLCOTT CITY No. 2	DRAWING NO. 2 OF 3	SCALE 1"=50' 525-421
--	---	-----------------------------	--	---	---------------------------------	-----------------------------------

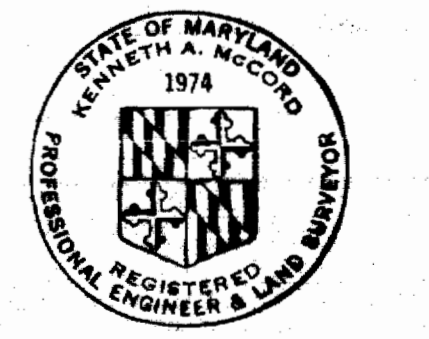
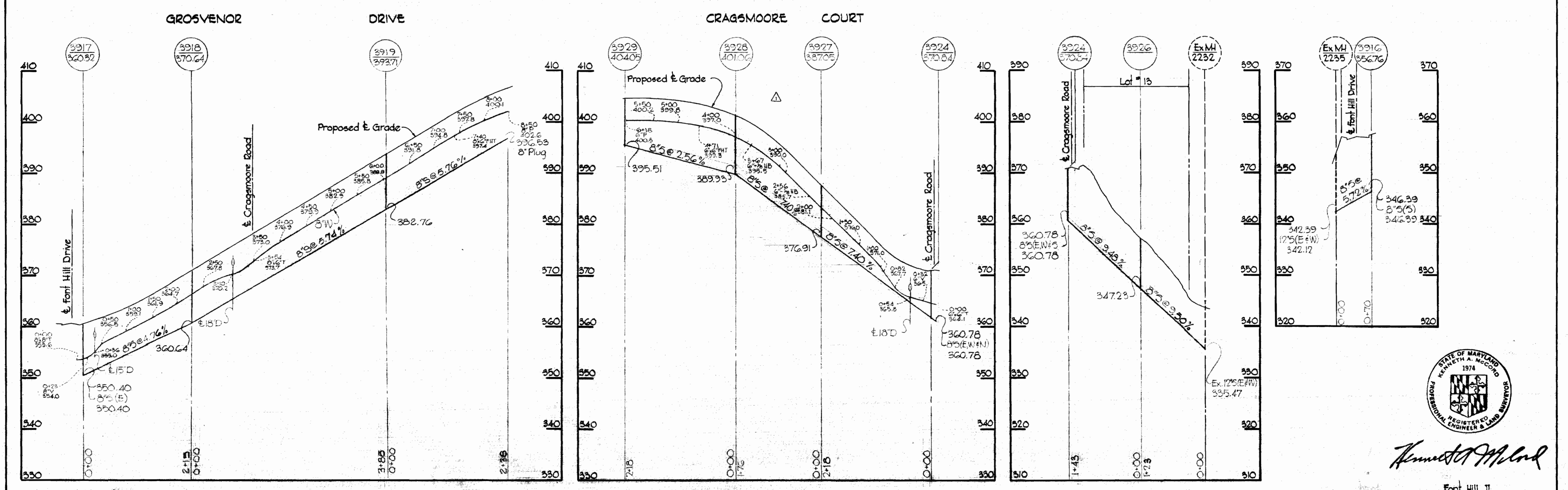
W. O. 6024-2

Dec. 4, 1969 FB 4098
 AS BUILT



No.	Date	Revision
1	6-12-69	Revised water and sewer Cragmoore Ct and Cragmoore Rd

All Sewer Pipe - AC Class 2400
All Water Pipe - Cast Iron



Kenneth A. McCord

Font Hill II
Contract No. 300 W&S

WHITMAN, REQUARDT & ASSOCIATES ENGINEERS 1304 ST. PAUL ST. BALTIMORE, MARYLAND	HOWARD COUNTY METROPOLITAN COMMISSION APRIL 22, 1969 DATE <i>W O Filbert</i> CHIEF ENGINEER	CONTRACT NO. 300-W&S	PROFILES OF WATER & SEWER MAINS	ELECTION DISTRICT ELLICOTT CITY No. 2	DRAWING NO. 3 OF 3	SCALE 1"=50'

W. O. 6024-2

AS BUILT Dec. 4, 1969

WS 300 W-5/3