

VICINITY MAP
Scale: 1" = 2000'

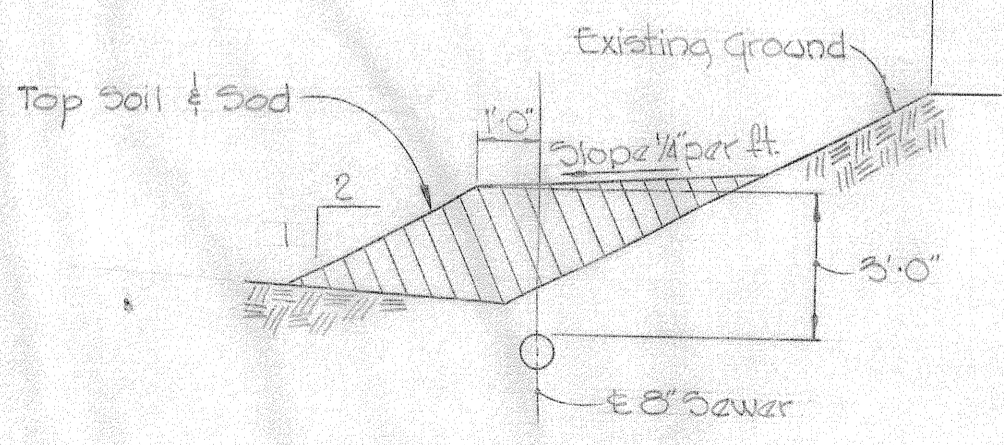
GENERAL NOTES

1. Approximate location of existing mains are shown. The Contractor shall take all necessary precautions to protect existing mains and services and maintain uninterrupted supply. Any damage incurred shall be repaired immediately.
2. All pipe elevations shown are invert elevations.
3. The Contractor shall locate existing utilities a minimum of two weeks in advance of construction operations in vicinity of utilities.
4. For all standard details see standards bound in Specifications.
5. All water mains to be C.I.P. or D.I.P. and have a minimum of 3 1/2' cover.
6. Block all fittings with concrete, see standard details bound in Specifications.
7. Bury Line elevations on fire hydrants shall be set to elevations shown on drawings.
8. All fire hydrants shall be strapped and buttressed in accordance with Standard Details W-5, W-5A, W-6, W-6A, W-6B, W-6C and W-6D.
9. Clear all utilities by a minimum of 6'; clear all poles by a 20' minimum or tunnel as required.
10. The Contractor shall provide a joint in all sewer mains within 20' of exterior manhole walls.
11. All sewer pipe shall be U.C.P.X., C.S.P.X. or A.C.P. class 2400.
12. Coordinates and elevations shown are based on Maryland State Datum.

As Built
Stakeout & Diary in FB 4360

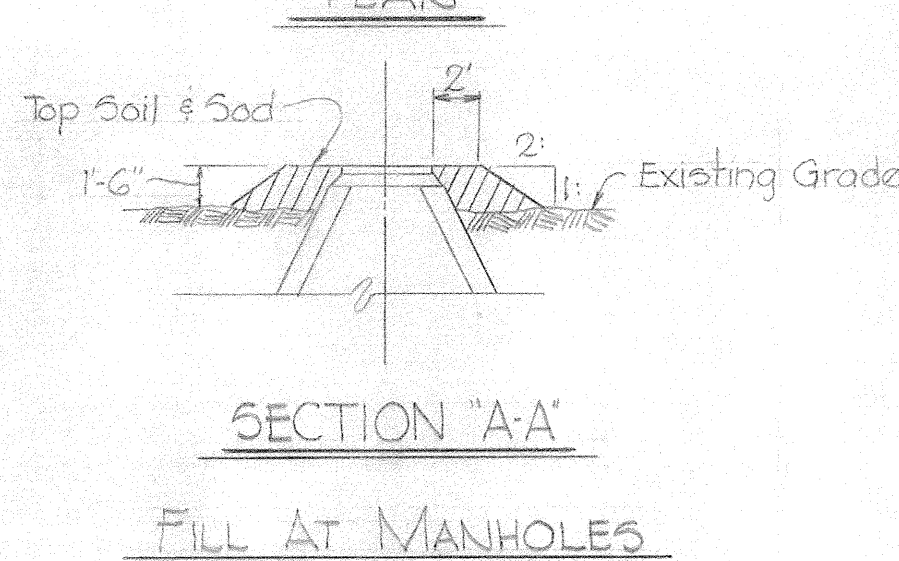
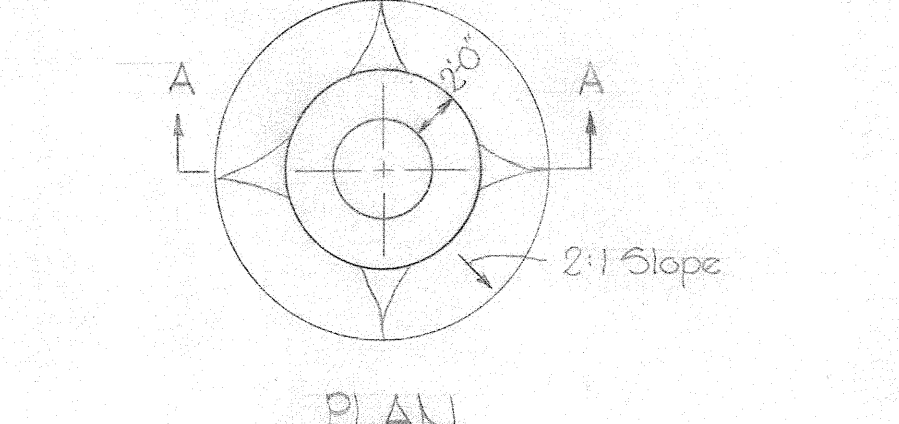
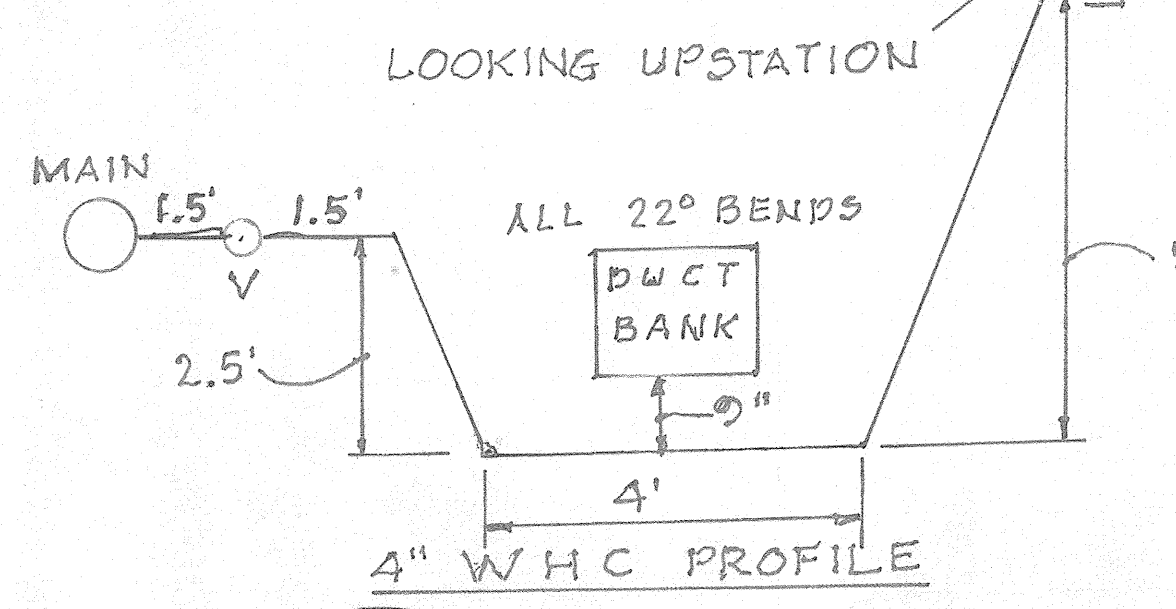
MATERIALS TO BE FURNISHED BY HOWARD COUNTY	
ITEM	QUANTITY
8" V	2
6" V	6
F.H.	6

QUANTITIES	
8" Sewer	2370'
8" Water	3150'
6" Water	30'



TYPICAL FILL SECTION OVER PIPE
Scale: 1/2" = 1'

WHITMAN, REQUARDT & ASSOCIATES ENGINEERS 1304 ST. PAUL ST. BALTIMORE, MARYLAND	HOWARD COUNTY METROPOLITAN COMMISSION DATE: 3-26-69 W. O. Fallick CHIEF ENGINEER	CONTRACT NO. C-299 W8S	PLAN OF WATER & SEWER MAINS	COLUMBIA VILLAGE OF WILDE LAKE ELECTION DISTRICT CLARKSVILLE No.5	DRAWING NO. 1 OF 4 SCALE 1" = 50'
--	--	-------------------------------	--	--	--



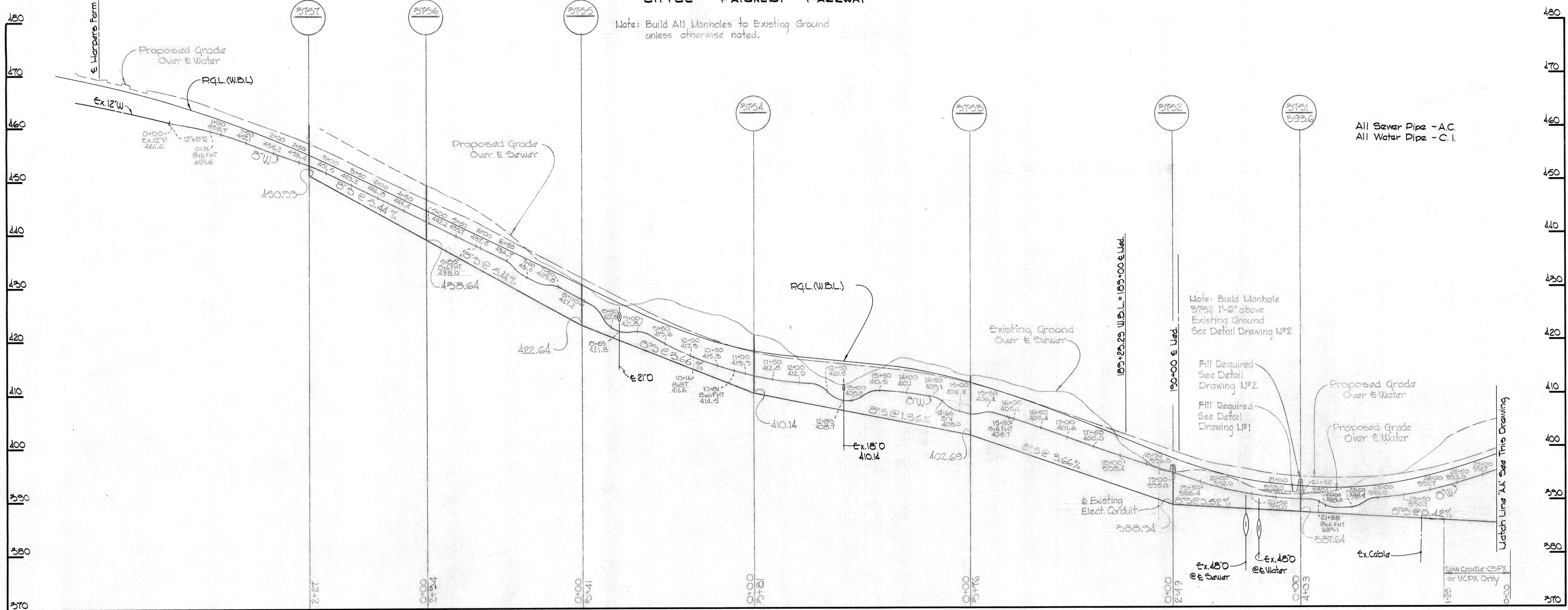
Contract No. G-299 W&S
Little Patuxent Parkway - Commercial

<p>WHITMAN, REQUARDT & ASSOCIATES ENGINEERS 1304 ST. PAUL ST. BALTIMORE, MARYLAND</p>	<p>HOWARD COUNTY METROPOLITAN COMMISSION 3-26-69 <i>W. O. Falbert</i> DATE CHIEF ENGINEER</p>	<p>CONTRACT NO. C-299 W&S</p>	<p>PLAN OF WATER & SEWER MAINS</p>	<p>COLUMBIA VILLAGE OF WILDE LAKE ELECTION DISTRICT CLARKSVILLE No. 5</p>	<table border="1"> <tr> <td>DRAWING NO. 2</td> <td>SCALE 1"=50'</td> <td>502,477</td> </tr> <tr> <td>OF 4</td> <td></td> <td>502,478</td> </tr> </table>	DRAWING NO. 2	SCALE 1"=50'	502,477	OF 4		502,478
DRAWING NO. 2	SCALE 1"=50'	502,477									
OF 4		502,478									

WRA Δ ADDED AS BUILT FOR A.D.O. 8/12/21 AS BUILT July 25, 1969 P.D. 4119, 4127

LITTLE PATUXENT PARKWAY

Note: Build All Manholes to Existing Ground unless otherwise noted.

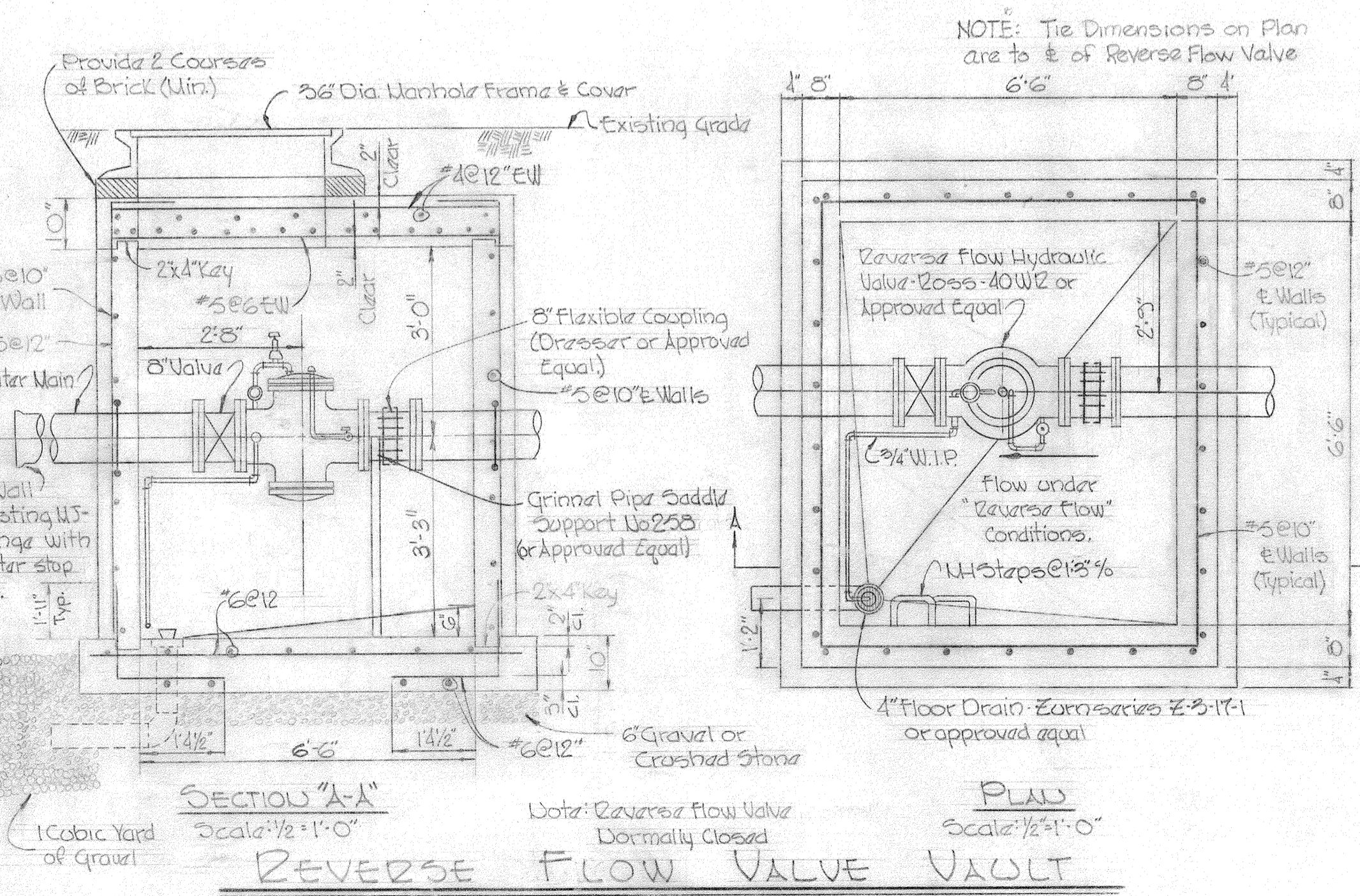


All Sewer Pipe - A.C.
All Water Pipe - C.I.

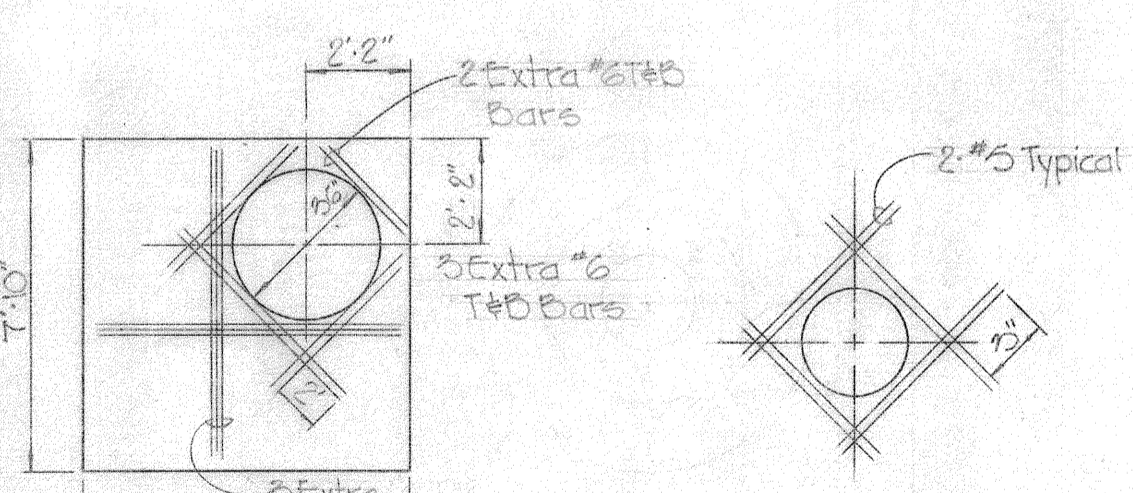
Note: Build Manhole 2752 1'-6\"/>

Fill Required See Detail Drawing M#2
Fill Required See Detail Drawing M#1

LITTLE PATUXENT PARKWAY

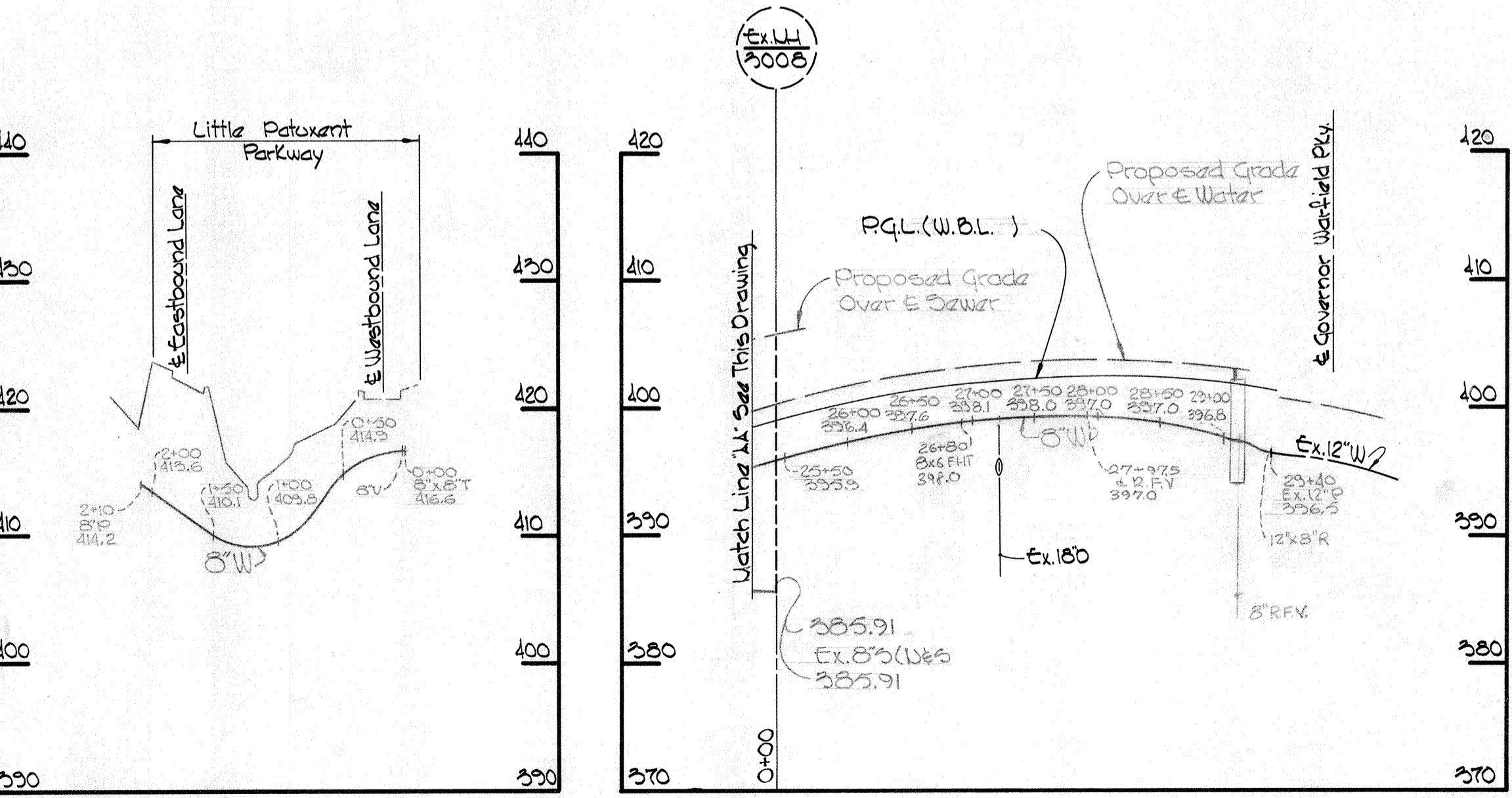


NOTE: The Dimensions on Plan are to $\frac{1}{2}$ of Reverse Flow Valve



TOP SLAB Scale: 1/4"=1'-0"
TYPICAL REINFORCING AROUND OPENINGS IN WALLS No Scale

- GENERAL CONCRETE NOTES
- All reinforced concrete shall be Class A, 3500 psi at 28 days.
 - Reinforcing steel shall be intermediate grade (ASTM A-15) with deformations conforming to ASTM Specification A-305.
 - All dowel positions beyond construction joints shall be 30 diameters.
 - All bars laps shall be 30 diameters unless otherwise noted.



WHITMAN, REQUARDT & ASSOCIATES
ENGINEERS
1304 ST. PAUL ST.
BALTIMORE, MARYLAND

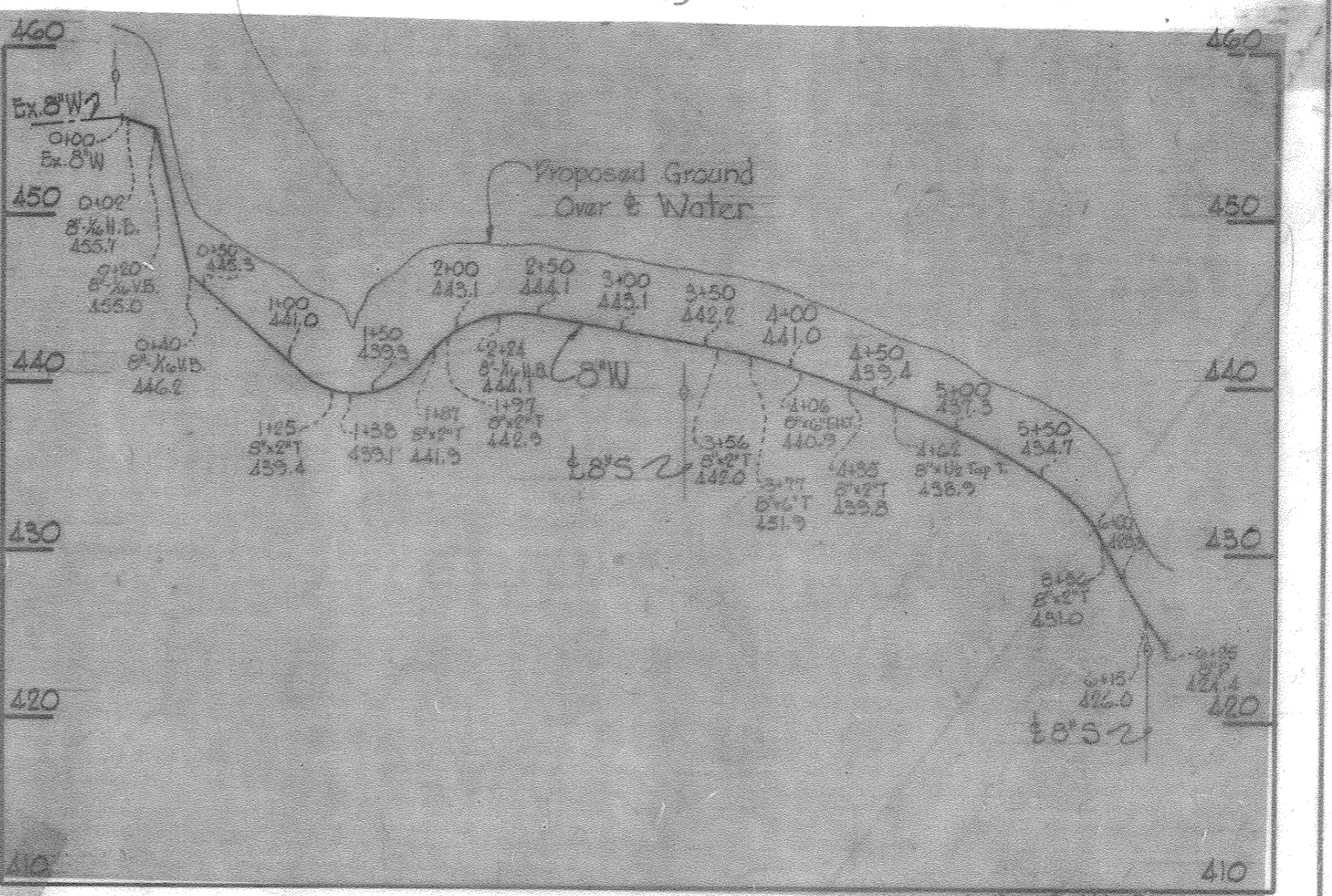
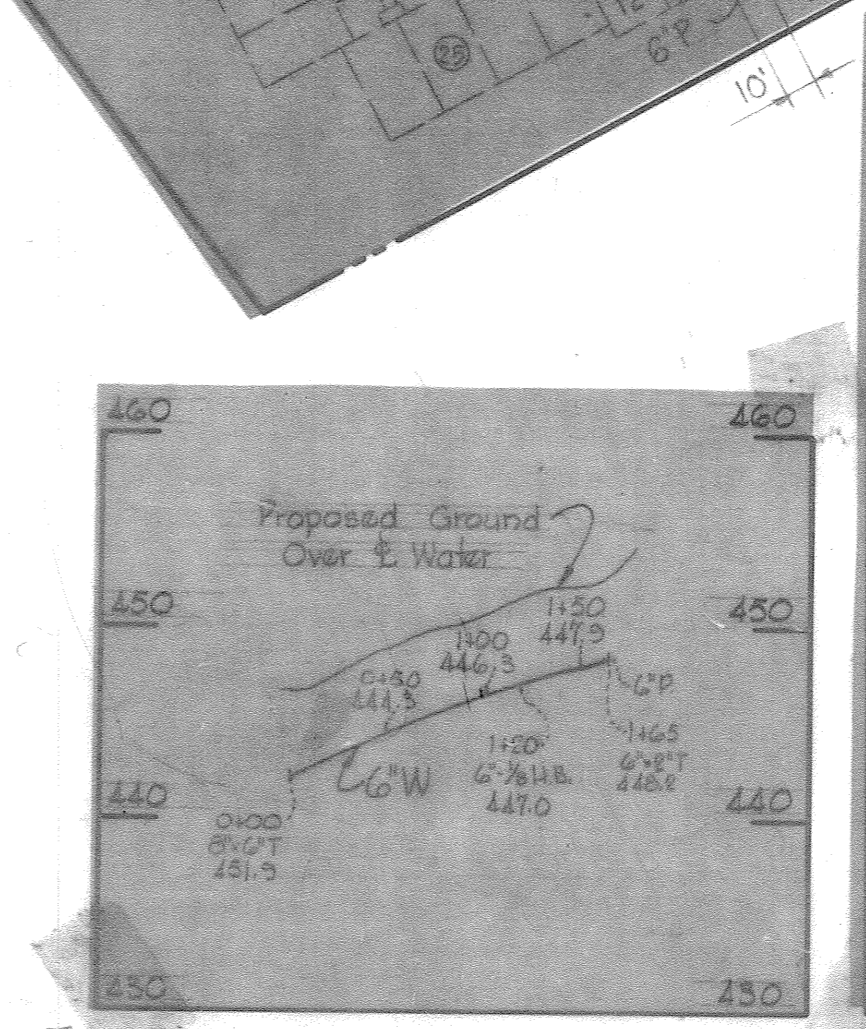
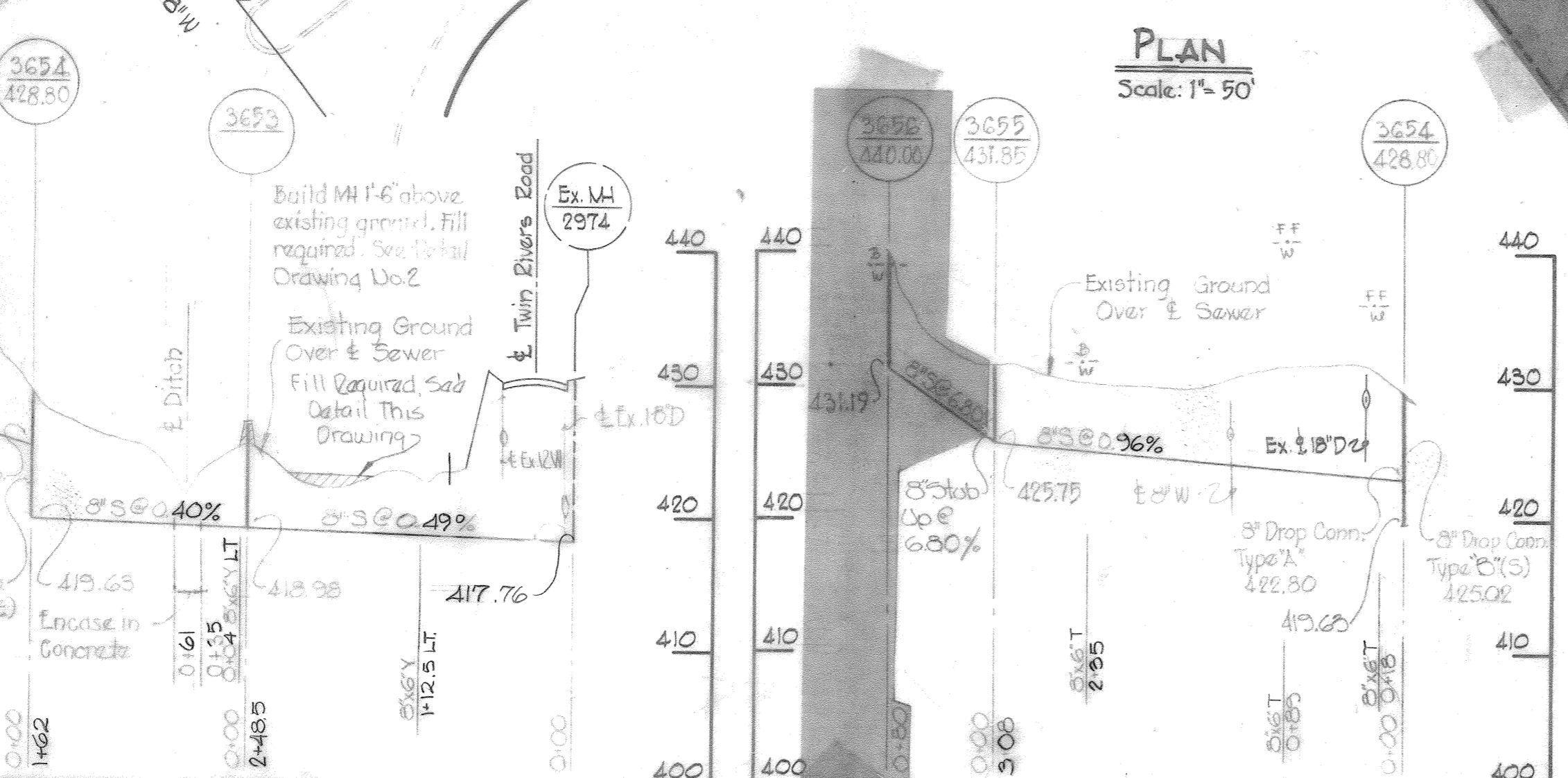
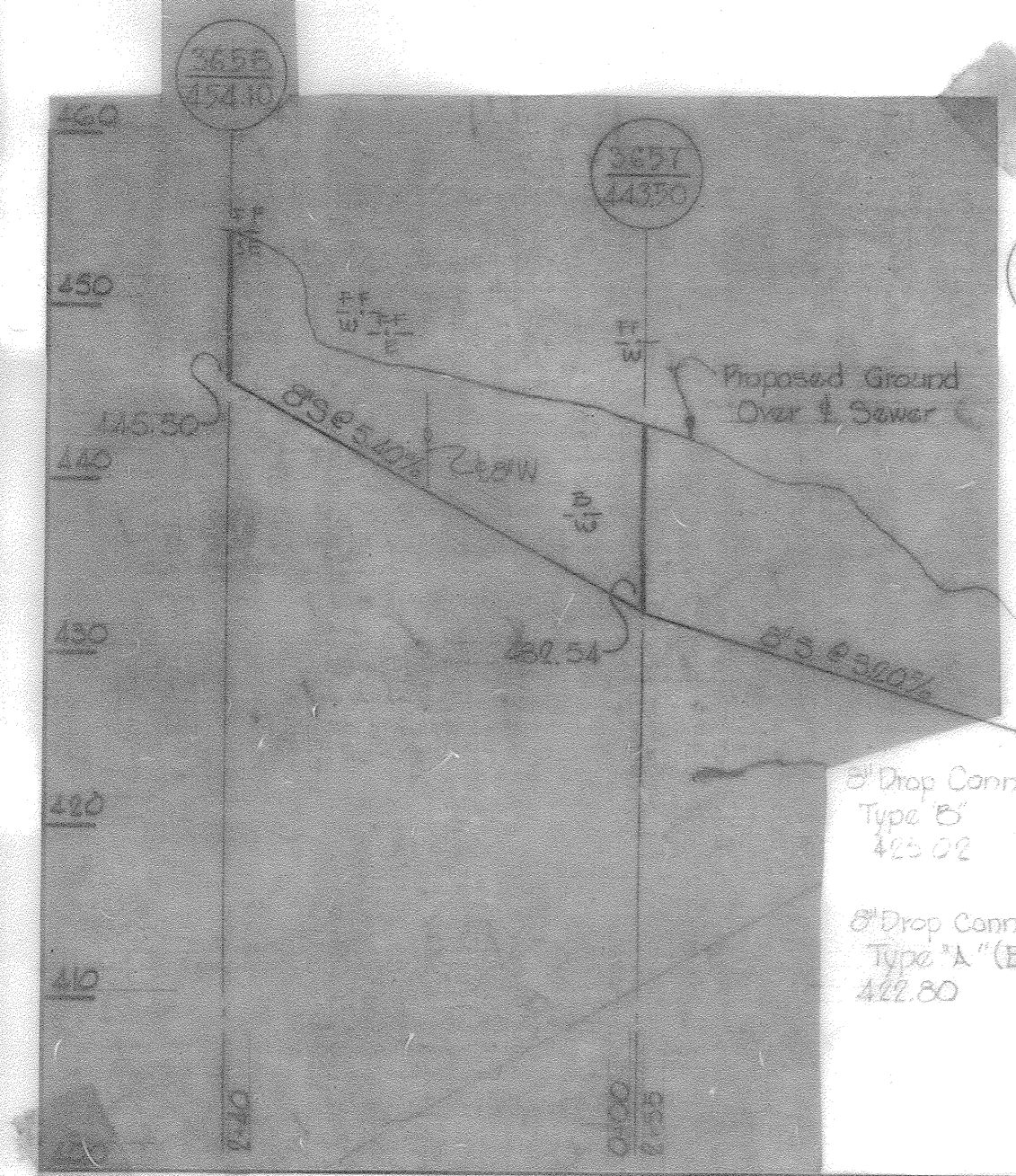
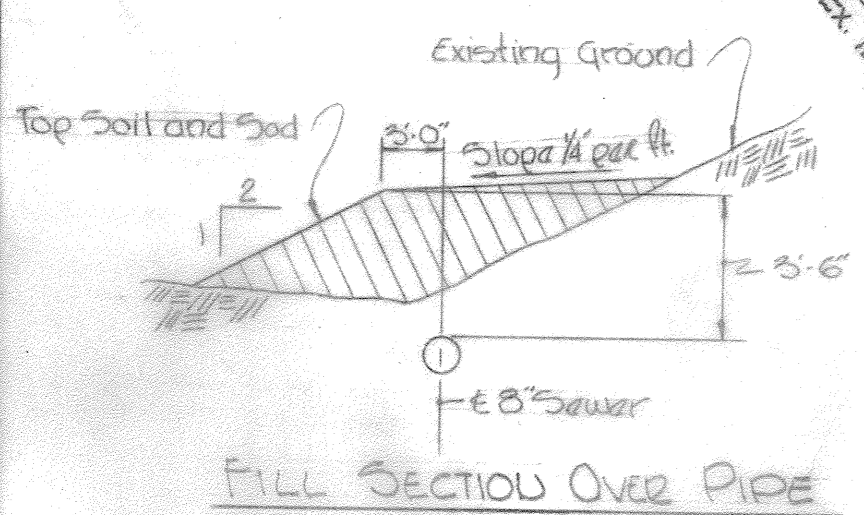
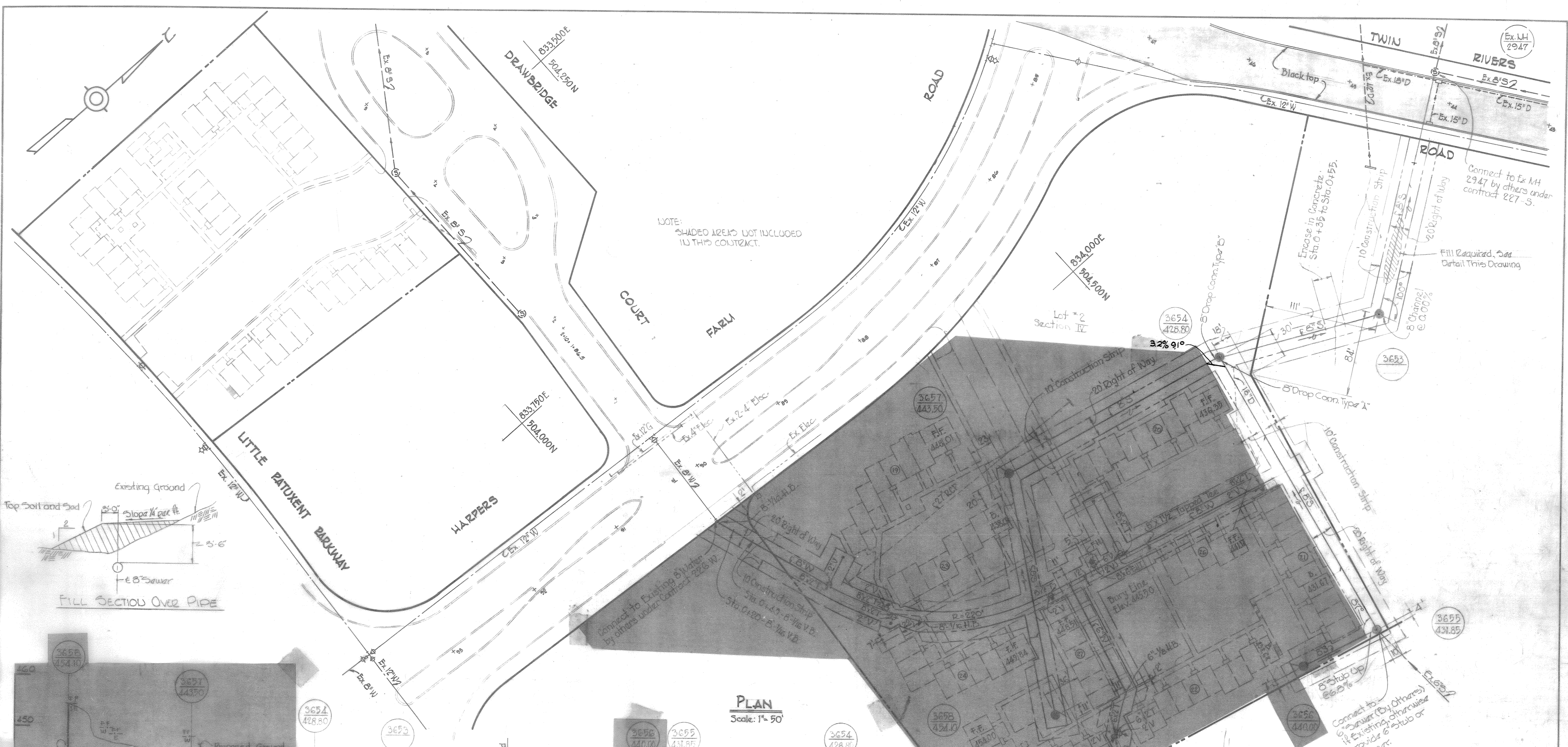
HOWARD COUNTY METROPOLITAN COMMISSION
3-26-69 DATE
W. O. F. Chief Engineer

CONTRACT NO. C-299 W&S

PROFILES OF
WATER & SEWER MAINS

COLUMBIA
VILLAGE OF WILDE LAKE
ELECTION DISTRICT CLARKSVILLE No. 5

CONTRACT No. C-299 W&S
Little Patuxent Parkway Commercial
DRAWING NO. 3 OF 4
SCALE H-1"=100' V-1"=10'



PLAN
Scale: 1" = 50'

PROFILES
Scale: Horiz. 1" = 100'
Vert. 1" = 10'

PART "C" OF PROPOSAL

WATER NOT INCLUDED ON THIS SHEET

VWL: Sec 10: Area 3: Lot No. 2

Inter. Form Contract W&S

WHITMAN, REQUARDT & ASSOCIATES
ENGINEERS
1304 ST. PAUL ST.
BALTIMORE, MARYLAND

HOWARD COUNTY METROPOLITAN COMMISSION
DATE: 3-26-69
CHIEF ENGINEER

CONTRACT NO. C-284-WBS

PLAN & PROFILES OF
WATER & SEWER MAINS

COLUMBIA
VILLAGE OF HARPER'S CHOICE
ELECTION DISTRICT CLARKSVILLE No. 5

DRAWING NO. 4 OF 4
SCALE AS SHOWN
704-477