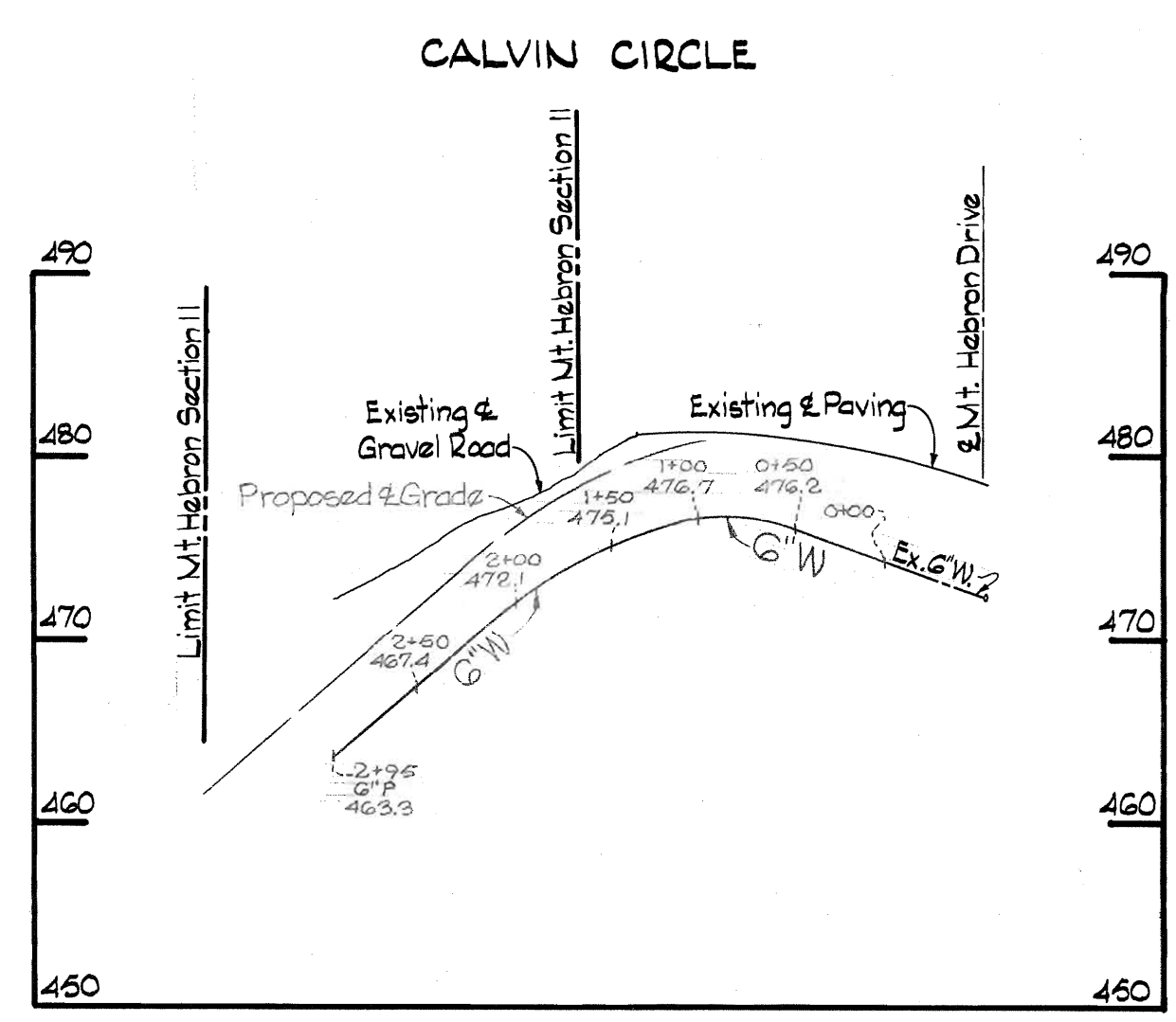


**GENERAL NOTES**

1. Approximate location of existing mains are shown. The Contractor shall take all necessary precautions to protect existing mains and services and maintain uninterrupted supply. Any damage incurred shall be repaired immediately.
2. All pipe elevations shown are invert elevations.
3. The Contractor shall locate existing utilities a minimum of two weeks in advance of construction operations in vicinity of utilities.
4. For all standard details see standards bound in Specifications.
5. All water mains to be C.I.P. or D.I.P. and have a minimum of 3 1/2' cover.
6. Block all fittings with concrete, see standard details bound in Specifications.
7. Clear all utilities by a minimum of 6', clear all poles by 2'-0" minimum or tunnel as required.
8. All horizontal and vertical controls are based on Howard County Datum.



QUANTITIES	
ITEM	QUANTITY
6" Water Main	300 L.F.



*Kenneth A. McCord*

Mount Hebron Section 11  
 Contract No. 298-W

WHITMAN, REQUARDT & ASSOCIATES ENGINEERS 1304 ST. PAUL ST. BALTIMORE, MARYLAND	HOWARD COUNTY METROPOLITAN COMMISSION 3-19-69 DATE	100 Robert CHIEF ENGINEER	CONTRACT NO. 298-W	PLAN AND PROFILE OF WATER MAINS	ELECTION DISTRICT ELLICOTT CITY NO.2	DRAWING NO. 1 OF 1	SCALE AS SHOWN
---	--	------------------------------	--------------------	------------------------------------	---	-----------------------	----------------

W. O. 6024-2

FB # 3012  
 JULY 31, 1969

WS 298-W/1