

Note:
The Contractor shall notify the Telephone Company prior to any construction activities in vicinity of the telephone cables by calling collect at 685-0400 in Baltimore Maryland.

No.	Date	Revision
1	5-20-69	Revised Sewer between Manholes W#5 & 3931

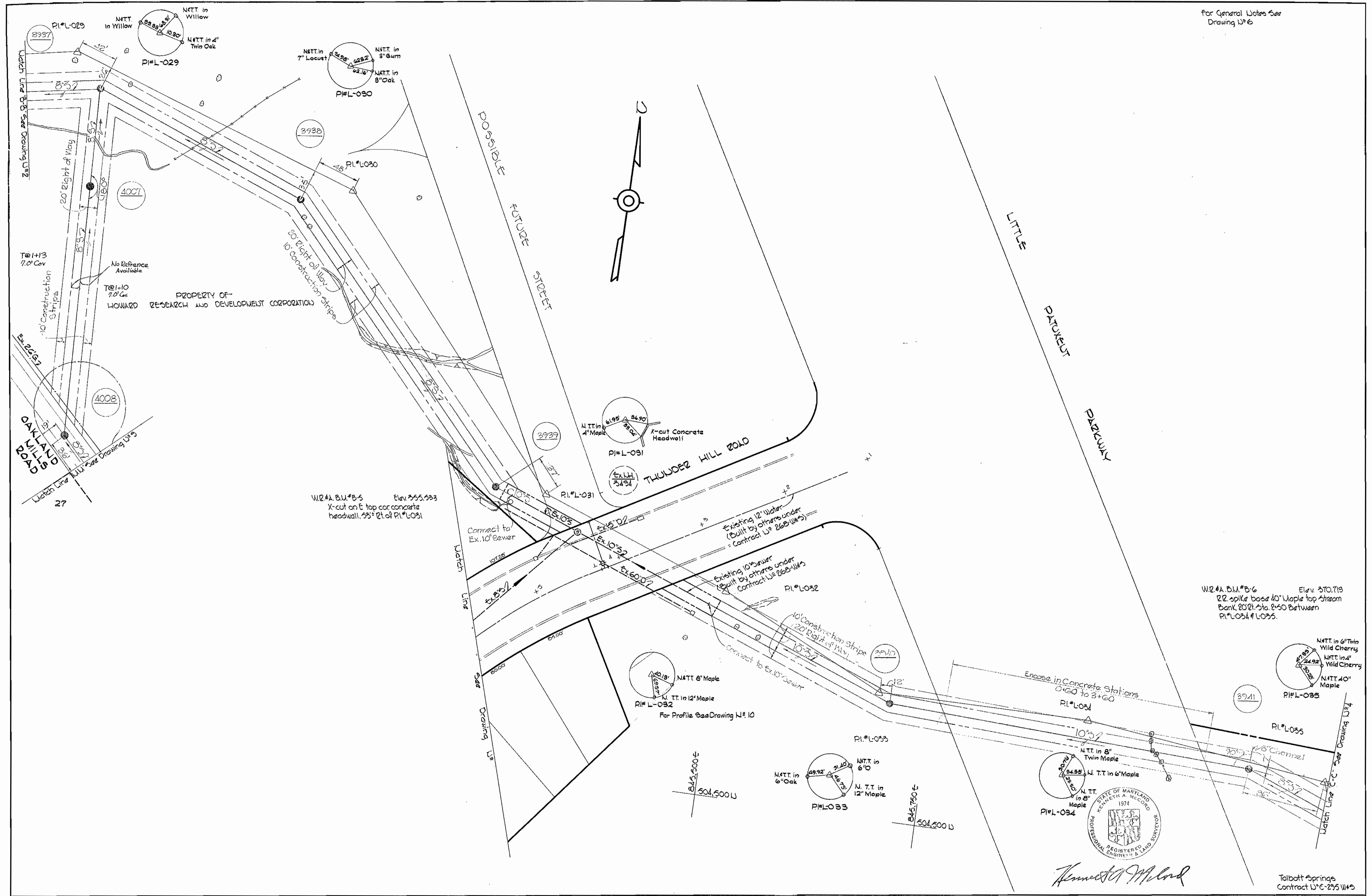
WHITMAN, REQUARDT & ASSOCIATES ENGINEERS 1304 ST. PAUL ST. BALTIMORE, MARYLAND	HOWARD COUNTY METROPOLITAN COMMISSION DATE: 4-28-69 W. O. Pulbert CHIEF ENGINEER	CONTRACT NO. C-295 WBS	PLAN OF WATER & SEWER MAINS	COLUMBIA VILLAGE OF OAKLAND MILLS ELECTION DISTRICT GULFORD NO. 6	DRAWING NO. 2 OF 14	SCALE 1" = 50'
					Talbott Springs Contract No. 295 WBS	

W. O. 6023

AS PREPARED Feb. 10, 1970

WS 295-WS/2

For General Notes See Drawing W-6

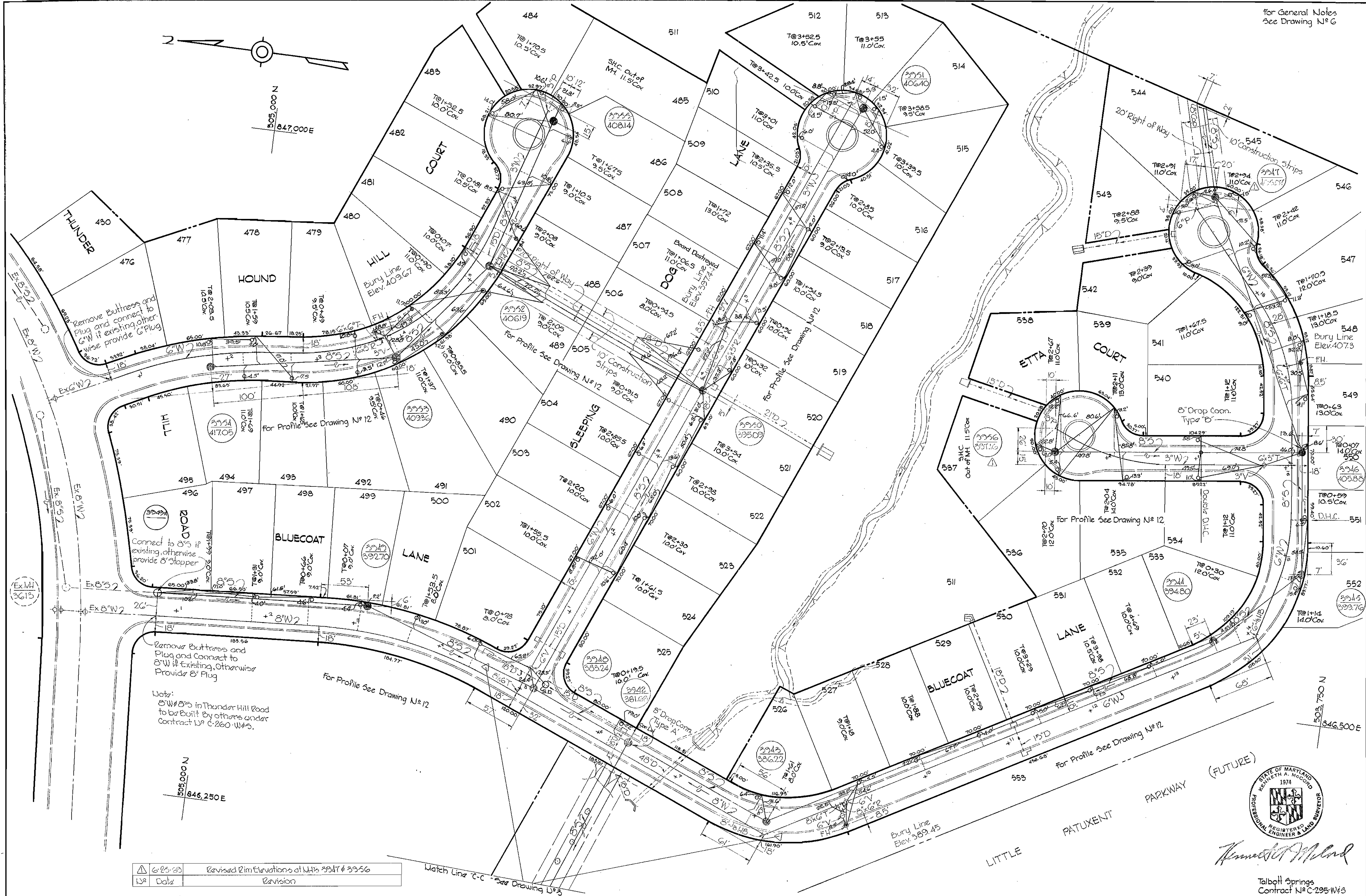


WS 295-WS/3

WHITMAN, REQUARDT & ASSOCIATES ENGINEERS 1304 ST. PAUL ST. BALTIMORE, MARYLAND	HOWARD COUNTY METROPOLITAN COMMISSION DATE <u>4-28-69</u> <i>W. O. Elliott</i> CHIEF ENGINEER	CONTRACT NO. C-295 W&S	PLAN OF WATER & SEWER MAINS	COLUMBIA VILLAGE OF OAKLAND MILLS ELECTION DISTRICT GUILFORD NO. 6	DRAWING NO. <u>3</u> OF <u>14</u> SCALE 1" = 50' AS BUILT Feb. 10, 1970
---	---	------------------------	--------------------------------	--	---

W. O. 6023

for General Notes
See Drawing N# 6



△ 625-13	Revised Rim Elevations at MHs 3347 & 3356
W 3	Date Revision

WHITMAN, REQUARDT & ASSOCIATES
ENGINEERS
1304 ST. PAUL ST.
BALTIMORE, MARYLAND

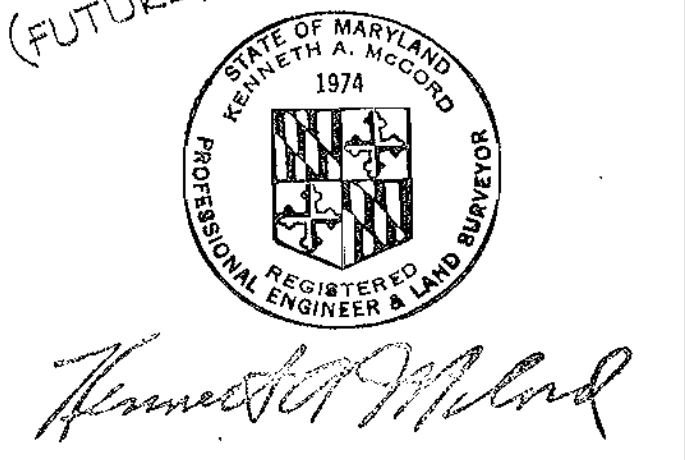
HOWARD COUNTY METROPOLITAN COMMISSION
4-28-69 *W O Filbert*
DATE CHIEF ENGINEER

CONTRACT NO. C-295 W&S

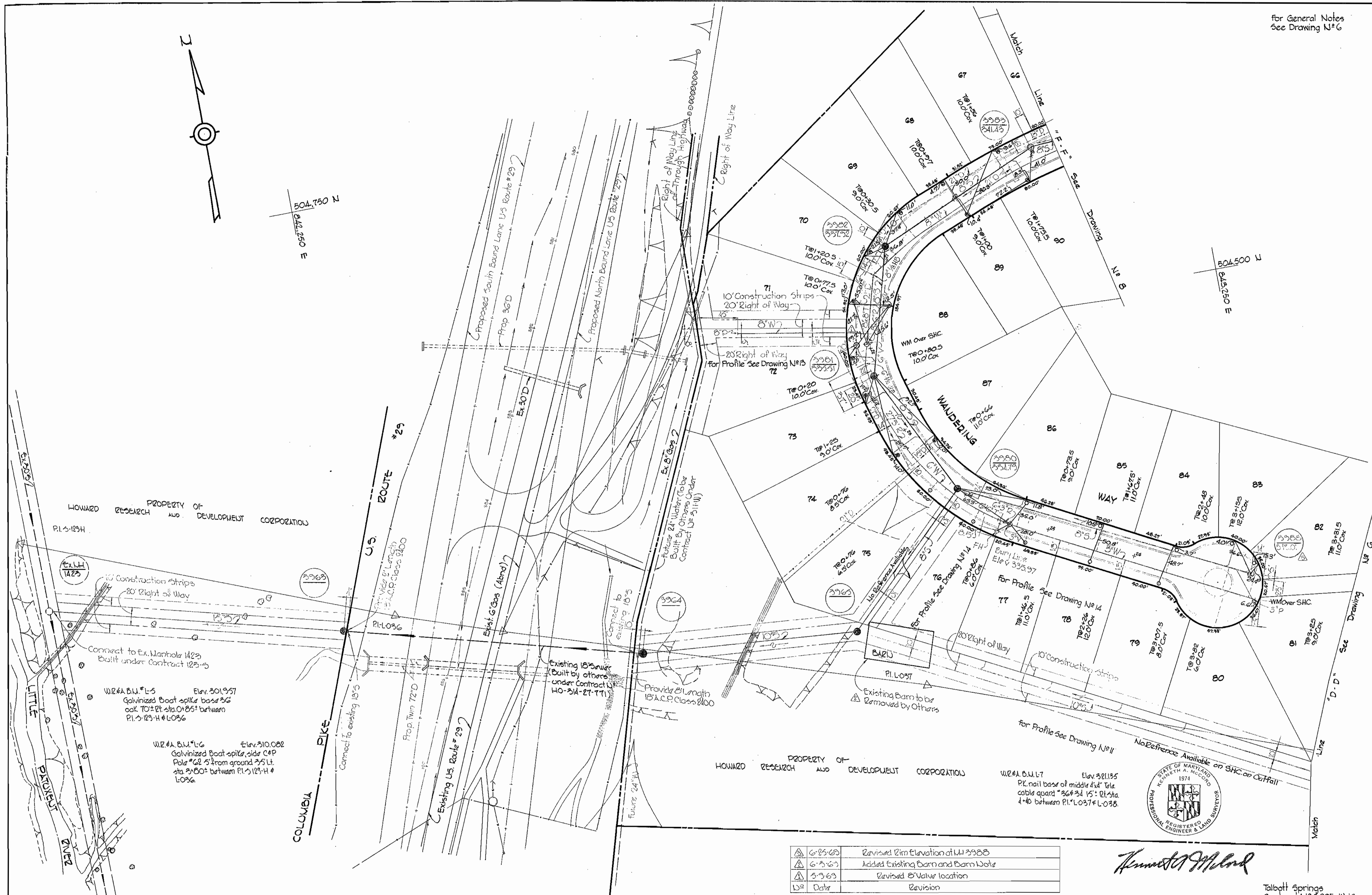
PLAN OF
WATER & SEWER MAINS

COLUMBIA
VILLAGE OF OAKLAND MILLS
ELECTION DISTRICT GUILFORD NO. 6

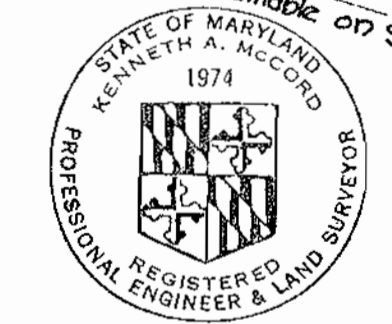
DRAWING NO. 4 OF 14	SCALE 1" = 50'
	505-484
	504-289
	503-485
	503-484



WS 295-WS/4



6-25-63	Revised 12" Elevation at M-1423
6-25-63	Added Existing Barn and Barn Note
3-7-63	Revised 18" Valve location
10-2-62	Revision



Kenneth A. McLeod

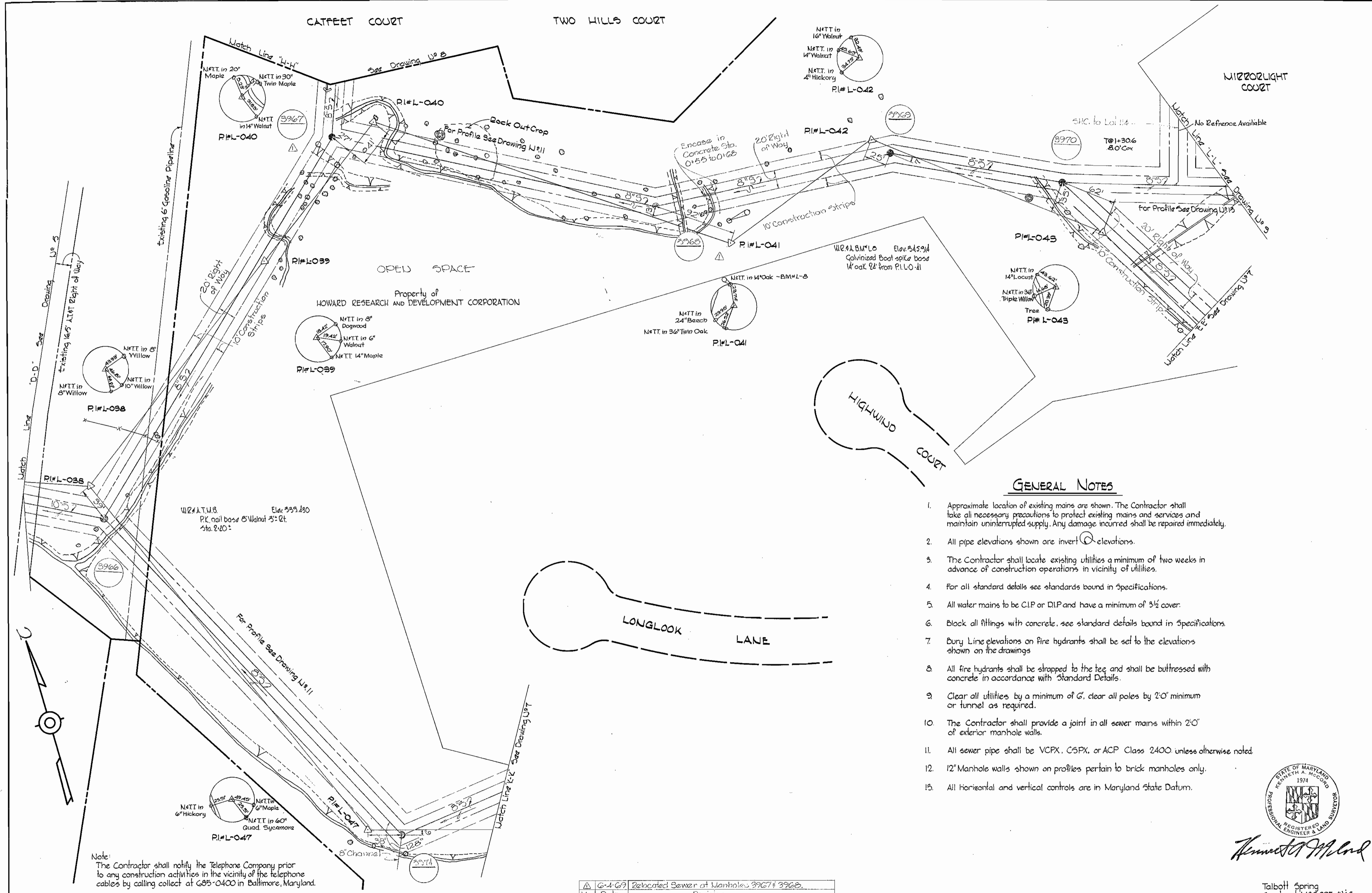
Talbot Springs
Contract No. C-295-W&S

<p>WHITMAN, REQUARDT & ASSOCIATES ENGINEERS 1304 ST. PAUL ST. BALTIMORE, MARYLAND</p>	<p>HOWARD COUNTY METROPOLITAN COMMISSION 4-28-69 <i>W. O. Gilbert</i> DATE CHIEF ENGINEER</p>	<p>CONTRACT NO. C-295 W&S</p>	<p>PLAN OF WATER & SEWER MAINS</p>	<p>COLUMBIA VILLAGE OF OAKLAND MILLS ELECTION DISTRICT GUILFORD NO. 6</p>	<p>DRAWING NO. 5 OF 14</p>	<p>SCALE 1" = 50'</p>
--	--	--	---	--	---	----------------------------------

W. O. G. 23-2

AS BUILT Feb. 10, 1970

WS 295-NS/6

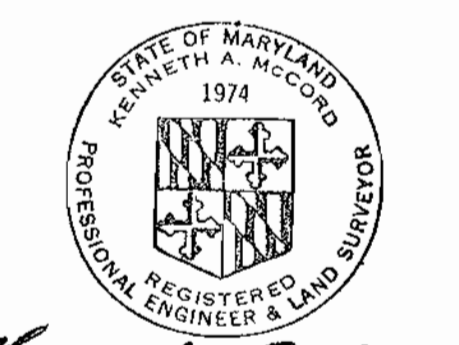


GENERAL NOTES

1. Approximate location of existing mains are shown. The Contractor shall take all necessary precautions to protect existing mains and services and maintain uninterrupted supply. Any damage incurred shall be repaired immediately.
2. All pipe elevations shown are invert elevations.
3. The Contractor shall locate existing utilities a minimum of two weeks in advance of construction operations in vicinity of utilities.
4. For all standard details see standards bound in Specifications.
5. All water mains to be C.I.P or D.I.P and have a minimum of 3 1/2' cover.
6. Block all fittings with concrete, see standard details bound in Specifications.
7. Bury Line elevations on fire hydrants shall be set to the elevations shown on the drawings.
8. All fire hydrants shall be strapped to the tee and shall be buttressed with concrete in accordance with Standard Details.
9. Clear all utilities by a minimum of 6', clear all poles by 2'0" minimum or tunnel as required.
10. The Contractor shall provide a joint in all sewer mains within 2'0" of exterior manhole walls.
11. All sewer pipe shall be VCPX, CSPX, or ACP Class 2400 unless otherwise noted.
12. 12" Manhole walls shown on profiles pertain to brick manholes only.
13. All horizontal and vertical controls are in Maryland State Datum.

Note:
The Contractor shall notify the Telephone Company prior to any construction activities in the vicinity of the telephone cables by calling collect at 685-0400 in Baltimore, Maryland.

△ G-4-G9	Relocated Sewer at Manholes 3967 & 3968.
No. Date	Revision



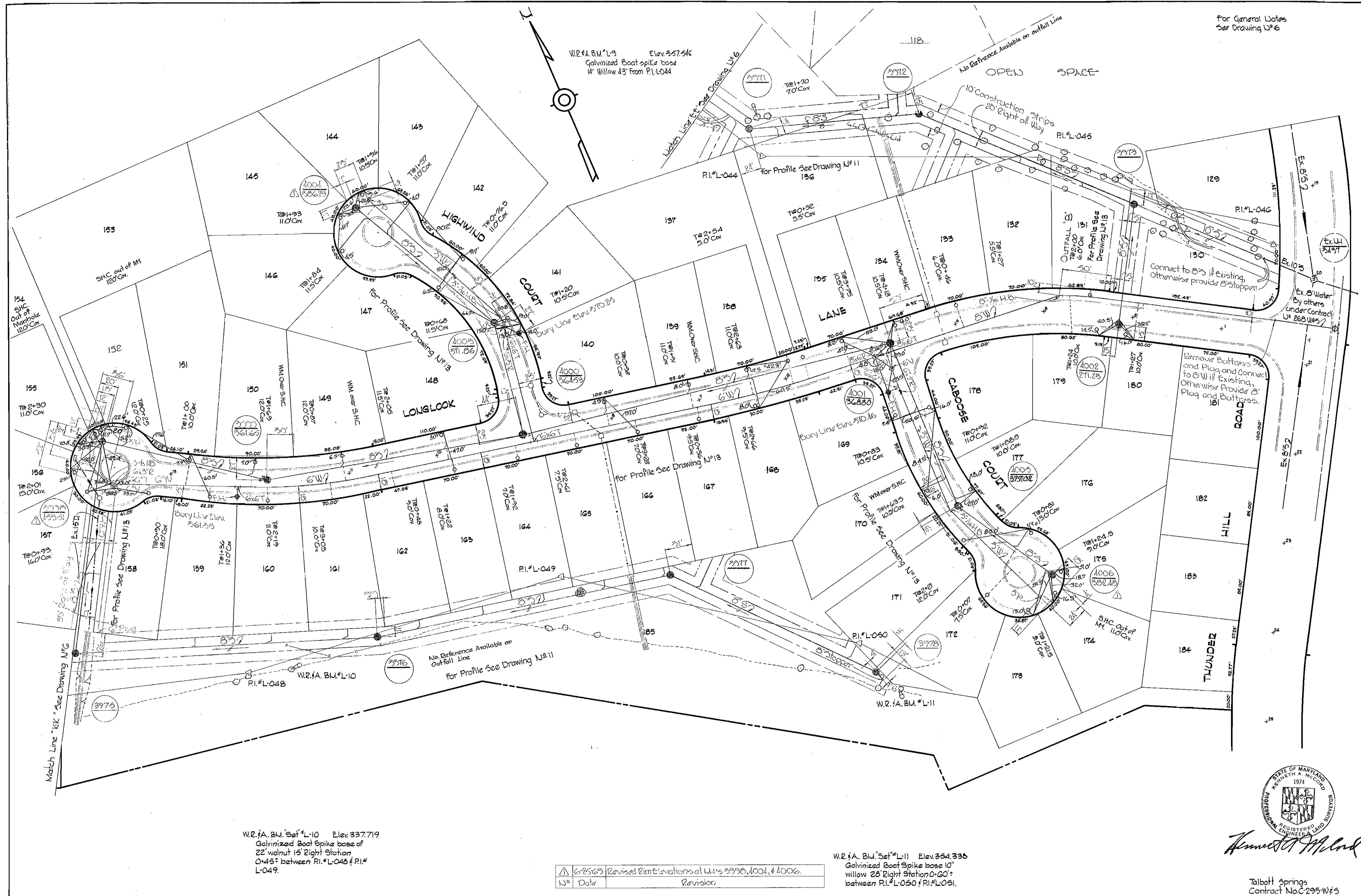
Kenneth A. McCord

Talbot Spring
Contract N#C-295-W#5

WHITMAN, REQUARDT & ASSOCIATES ENGINEERS 1304 ST. PAUL ST. BALTIMORE, MARYLAND	HOWARD COUNTY METROPOLITAN COMMISSION 4-28-69 <i>W O F Albert</i> <small>DATE CHIEF ENGINEER</small>	CONTRACT NO. C-295 W&S	PLAN OF WATER & SEWER MAINS	COLUMBIA VILLAGE OF OAKLAND MILLS ELECTION DISTRICT GUILFORD NO. 6	DRAWING NO. 6 OF 14	SCALE 1"=50'
					W. O. G023-2	AS BUILT Feb. 10, 1970

WS 295-W&S/6

For General Notes
See Drawing W-6



W.R.#1 B.M.*L-9 Elev. 357.54
Galvanized Boat spike base
14" Willow 43' from P.I. L-044

W.R.#A. B.M. Set #L-10 Elev. 337.719
Galvanized Boat Spike base of
22" walnut 15' Right Station
0+45' between P.I.*L-048 & P.I.*
L-049.

W.R.#A. B.M. Set #L-11 Elev. 354.336
Galvanized Boat Spike base 10"
willow 28' Right Station 0+20'
between P.I.*L-050 & P.I.*L-051.

△	6/25/69	Revised Elevations of M.I.'s 3996, 4001, & 4006.
W#	Date	Revision



Kenneth A. McLeod
REGISTERED PROFESSIONAL ENGINEER

Talbot Springs
Contract No. C-295-W-5

WHITMAN, REQUARDT & ASSOCIATES
ENGINEERS
1304 ST. PAUL ST.
BALTIMORE, MARYLAND

HOWARD COUNTY METROPOLITAN COMMISSION
DATE 4-28-69 *W O Falbert*
CHIEF ENGINEER

CONTRACT NO. C-295 W&S

**PLAN OF
WATER & SEWER MAINS**

**COLUMBIA
VILLAGE OF OAKLAND MILLS
ELECTION DISTRICT GUILFORD NO. 6**

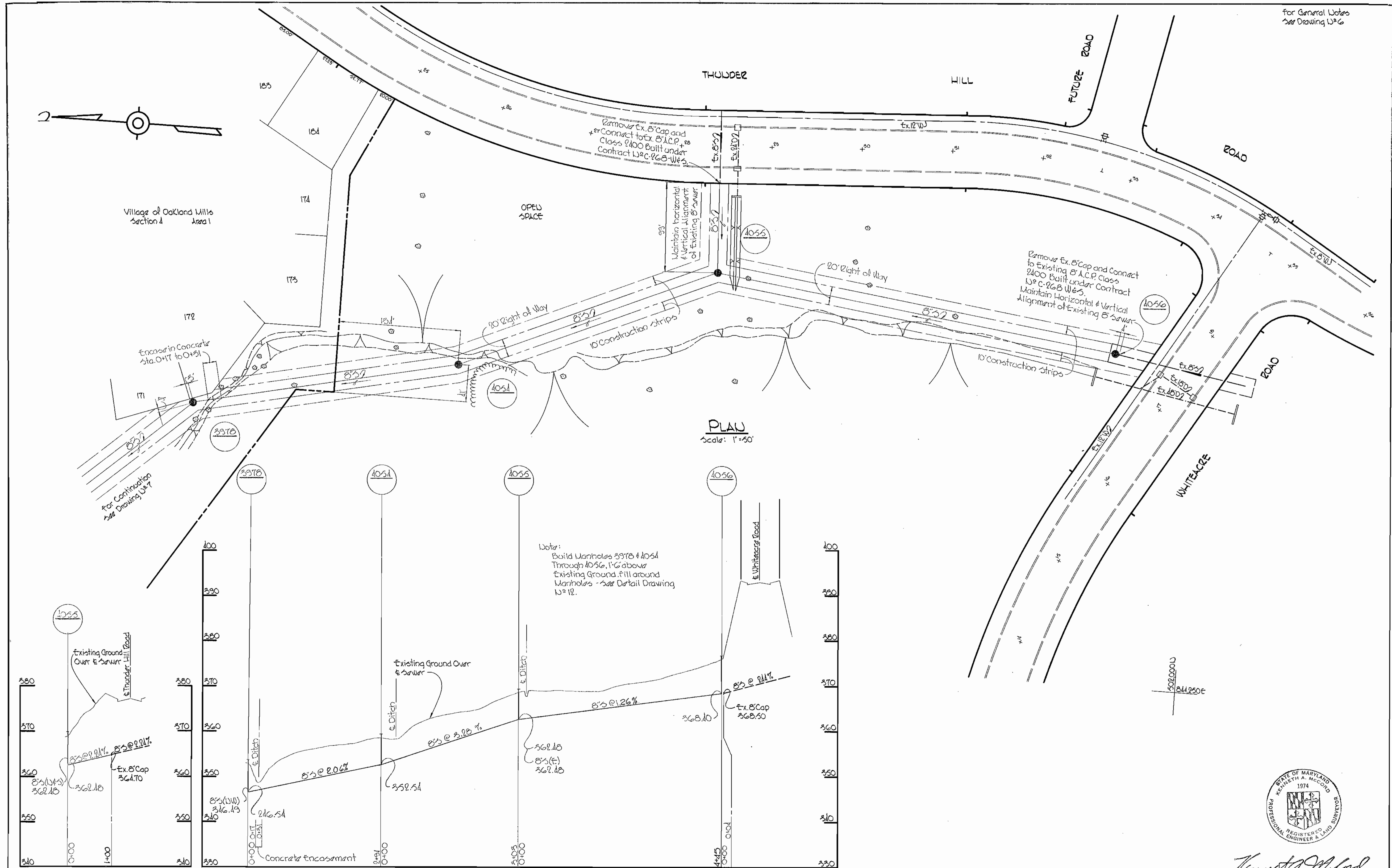
**DRAWING
NO. 7
OF 14**

**SCALE
1" = 50'**

W. O. 6023

AS BUILT Feb 10, 1970

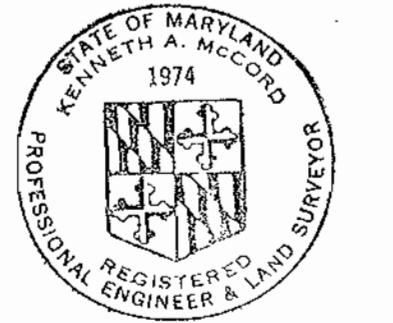
WS 295-W5/7



PLAN
Scale: 1"=50'

PROFILES: Scale: Horiz: 1"=100'
Vert: 1"=10'

Note:
Build Manholes 3978 & 4054
Through 4056, 1'-6" above
Existing Ground. Fill around
Manholes - See Detail Drawing
W&S 12.



Kenneth A. McLeod

Talbot Springs
Contract W&S 195

WHITMAN, REQUARDT & ASSOCIATES
ENGINEERS
1304 ST. PAUL ST.
BALTIMORE, MARYLAND

HOWARD COUNTY METROPOLITAN COMMISSION
7.24.69 *W.O. Fabrik*
DATE CHIEF ENGINEER

CONTRACT NO. C-295 W&S

PLAN & PROFILES OF
WATER & SEWER MAINS

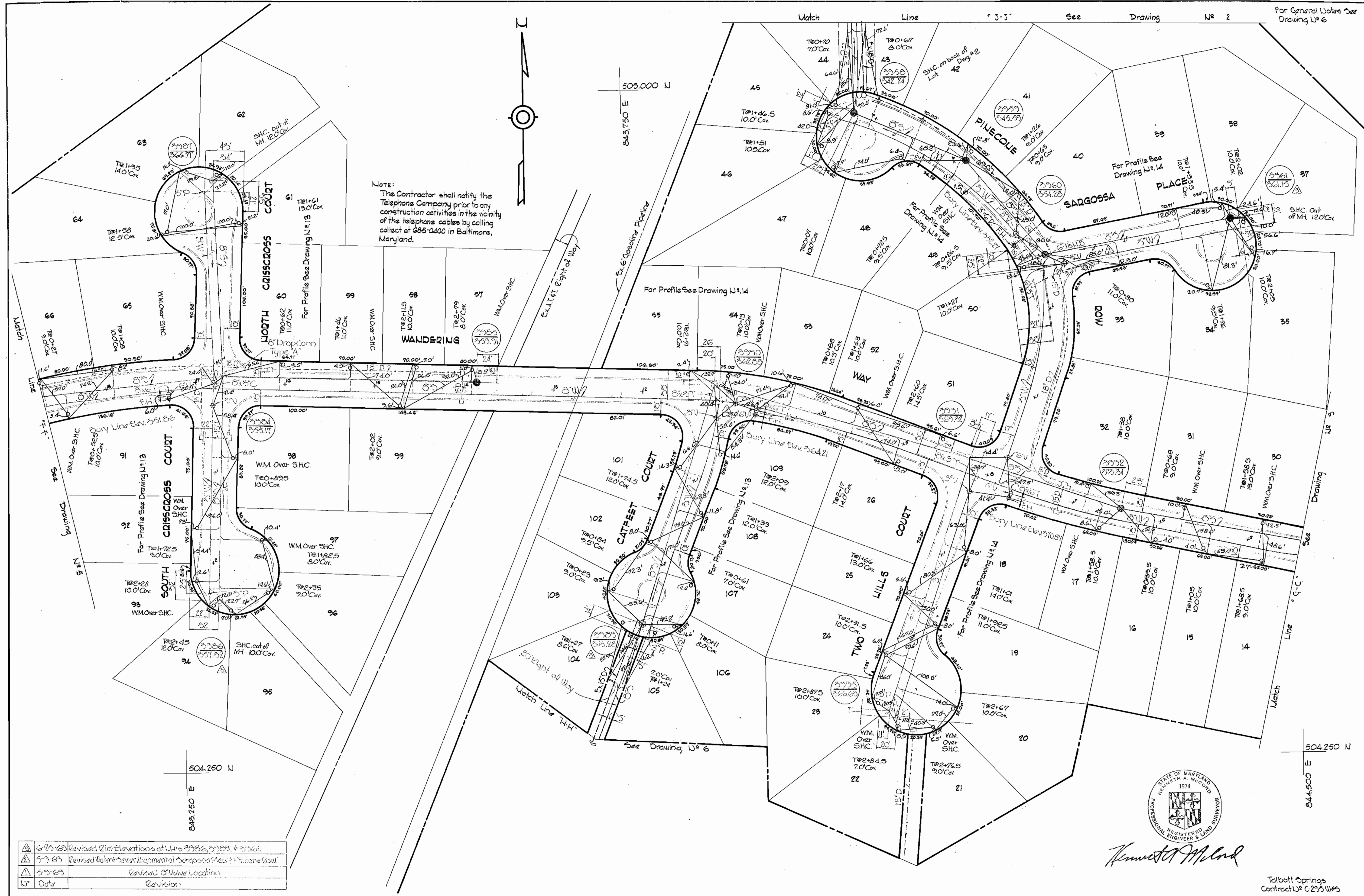
COLUMBIA
VILLAGE OF OAKLAND MILLS
ELECTION DISTRICT GUILFORD NO. 6

DRAWING NO. 7A OF 14	SCALE AS SHOWN	501-185
		502-185

W. O. 6025-2

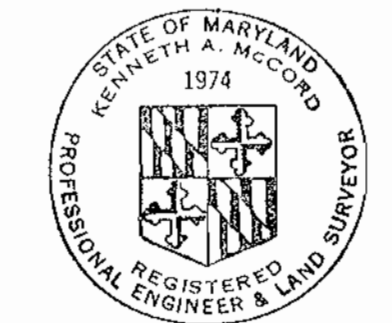
AS BUILT Feb 10, 1970

WS 295-WS/7A



NOTE:
The Contractor shall notify the Telephone Company prior to any construction activities in the vicinity of the telephone cables by calling collect at 685-0400 in Baltimore, Maryland.

△	6-25-69	Revised Elevations at U#s 3980, 3989, & 3991.
△	5-9-69	Revised Water & Sewer Diagram at Sargossa Place & Pinecole Place.
△	5-9-69	Revised Manhole Location.
△	5-9-69	Revision.



Kenneth A. Melrod

Talbot Springs
Contract U# C-295 W# 5

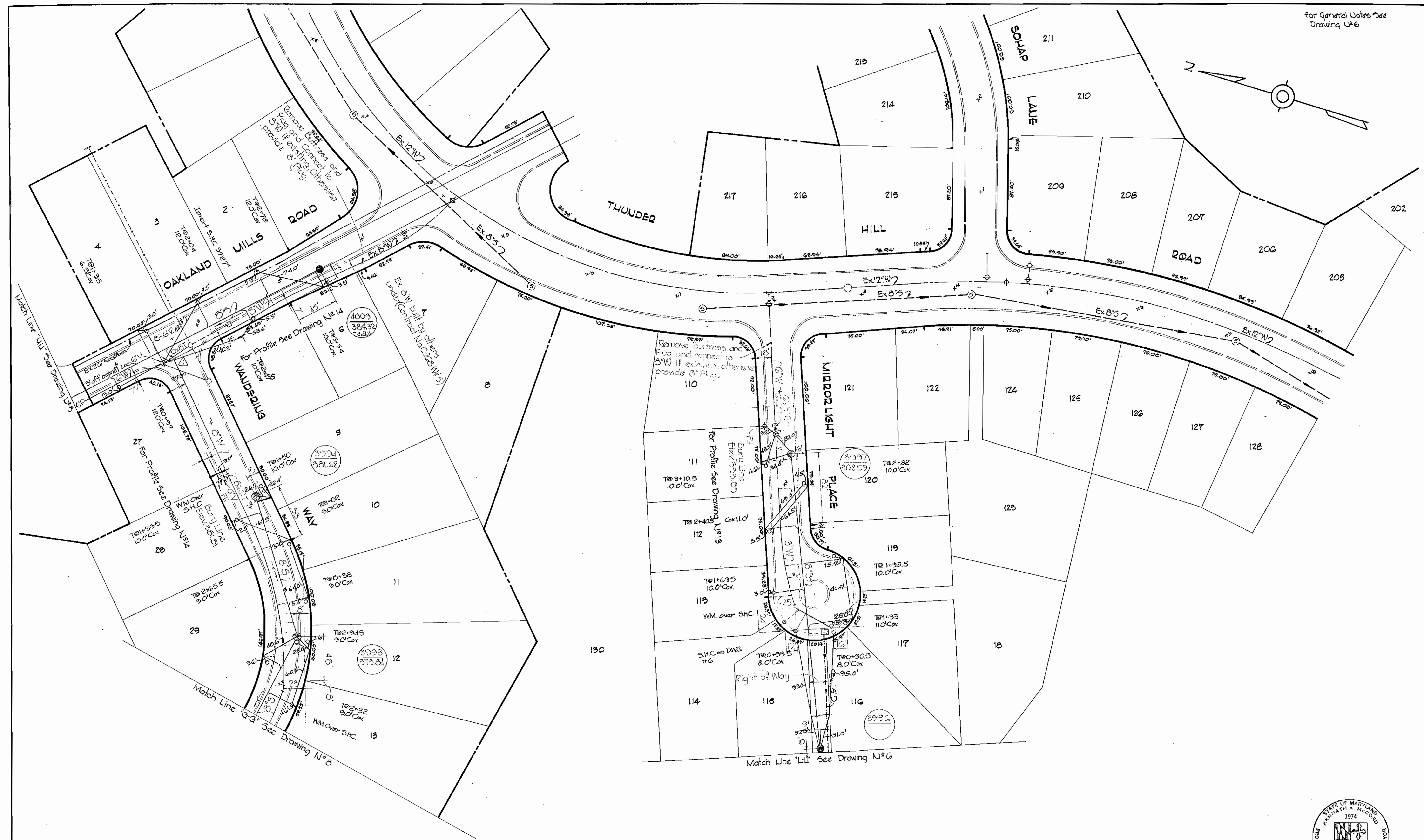
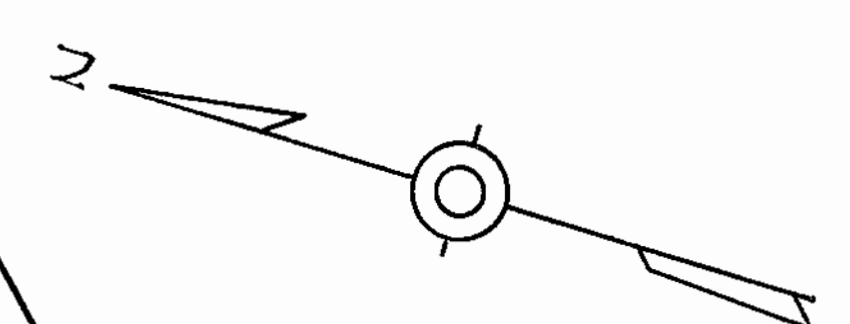
WHITMAN, REQUARDT & ASSOCIATES ENGINEERS 1304 ST. PAUL ST. BALTIMORE, MARYLAND	HOWARD COUNTY METROPOLITAN COMMISSION DATE _____ <i>W. O. Gilbert</i> CHIEF ENGINEER	CONTRACT NO. C-295 W# 5	PLAN OF WATER & SEWER MAINS	COLUMBIA VILLAGE OF OAKLAND MILLS ELECTION DISTRICT GUILFORD NO. 6	DRAWING NO. 8 OF 14	SCALE 1" = 50' 503,482 503,489 504,482 504,489
---	---	-------------------------	--------------------------------	--	---------------------------	---

W. O. 6023

AS BUILT Feb 1970

WS 295-WS/8

For General Notes See Drawing 13/6



6-3-69	Revised Sewer Between MH 3996 and MH 3997
5-3-69	Revised 8" Valve Location
138	Date Revision

WHITMAN, REQUARDT & ASSOCIATES
 ENGINEERS
 1304 ST. PAUL ST.
 BALTIMORE, MARYLAND

HOWARD COUNTY METROPOLITAN COMMISSION
 4-28-69 *W O Gilbert*
 DATE CHIEF ENGINEER

CONTRACT NO. C-295 W&S

PLAN OF
 WATER & SEWER MAINS

COLUMBIA
 VILLAGE OF OAKLAND MILLS
 ELECTION DISTRICT GUILFORD NO. 6

DRAWING NO. 9 OF 14 SCALE 1" = 50'

W. O. 4023

Kenneth A. McCord



Talbot Springs
 Contract No. C-295-W&S

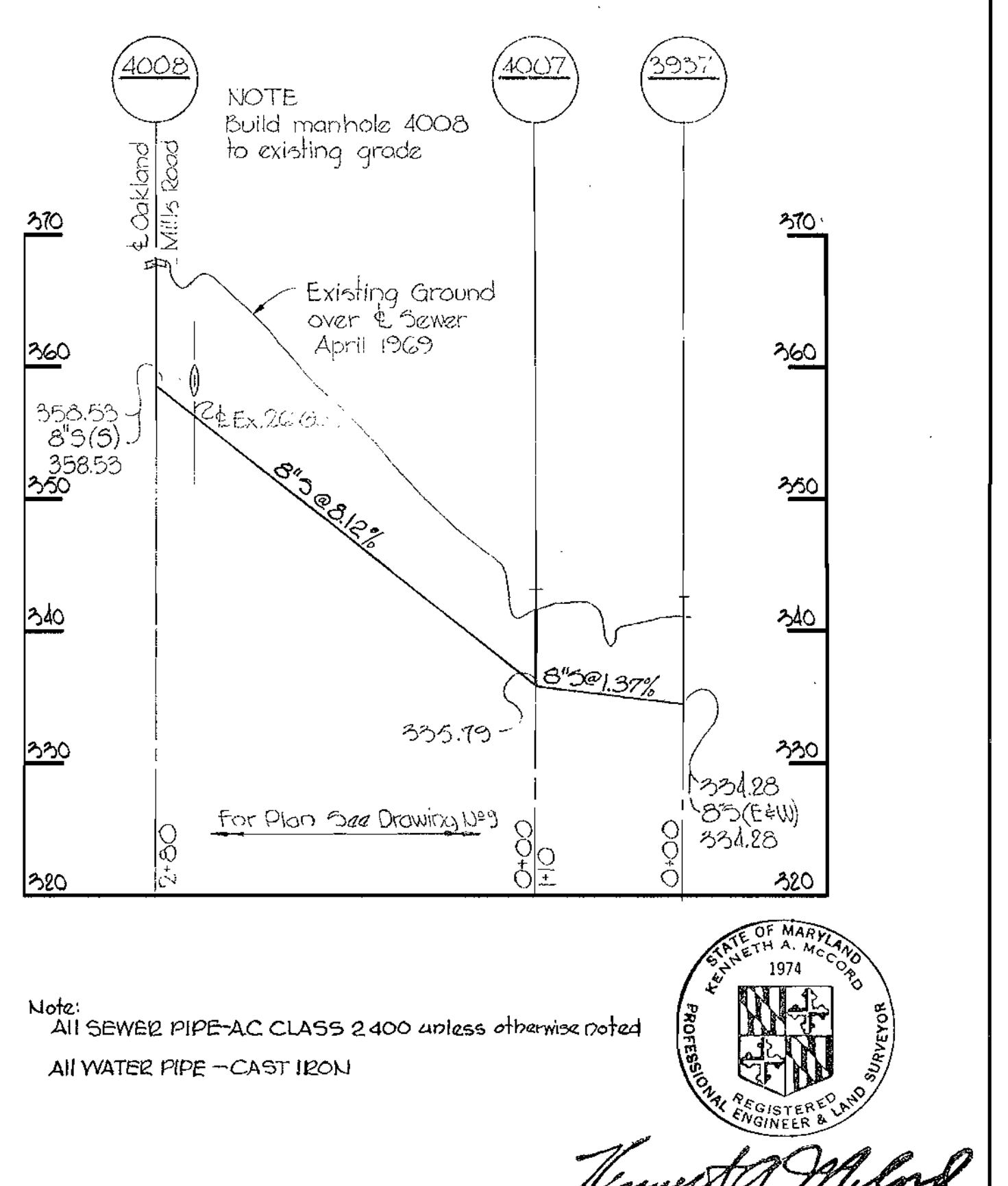
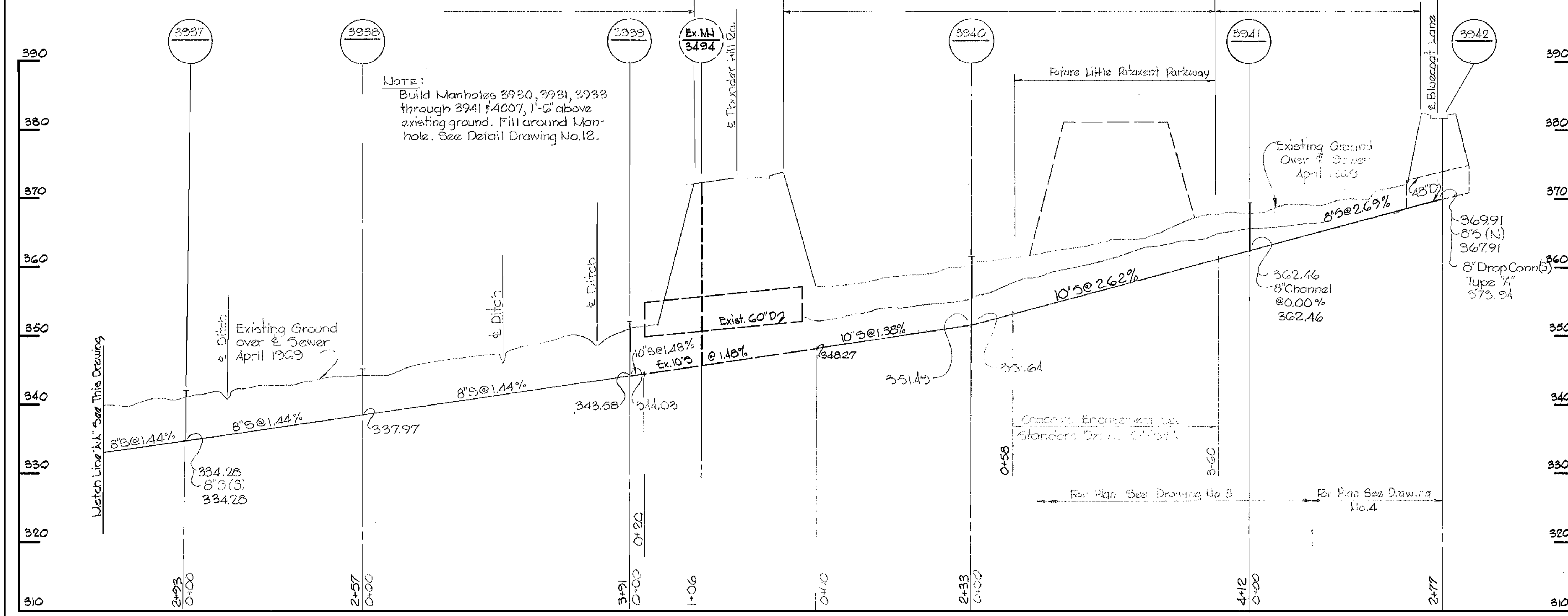
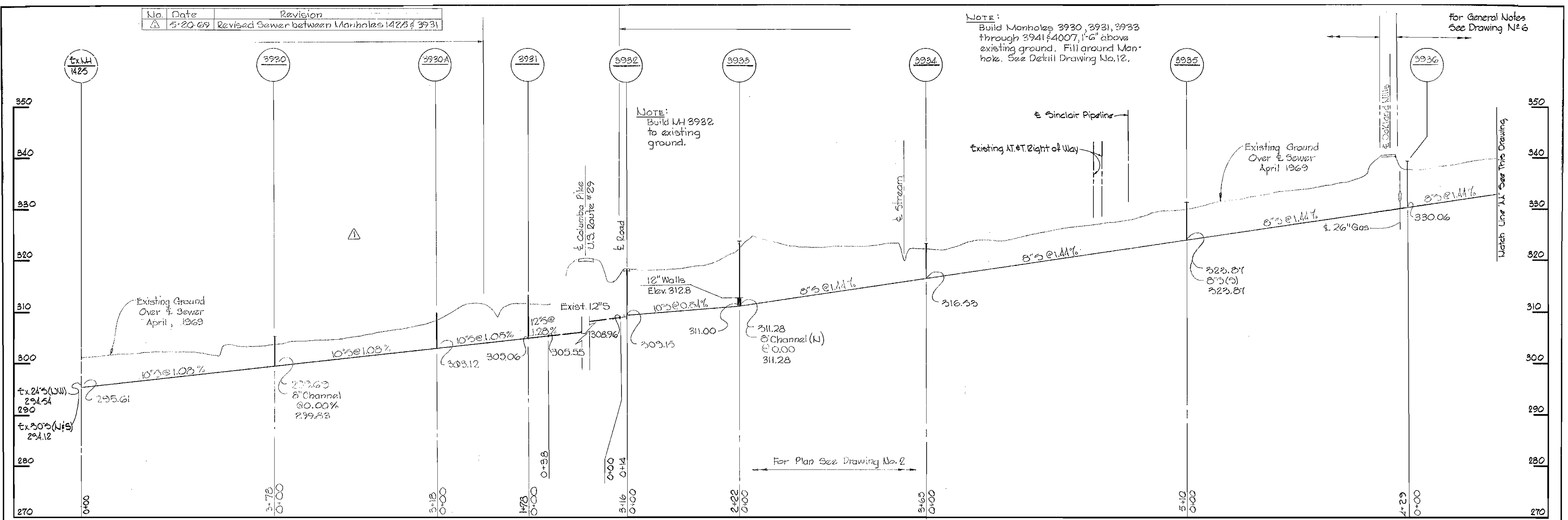
AS BUILT Feb 10, 1970

WS 295-W&S/9

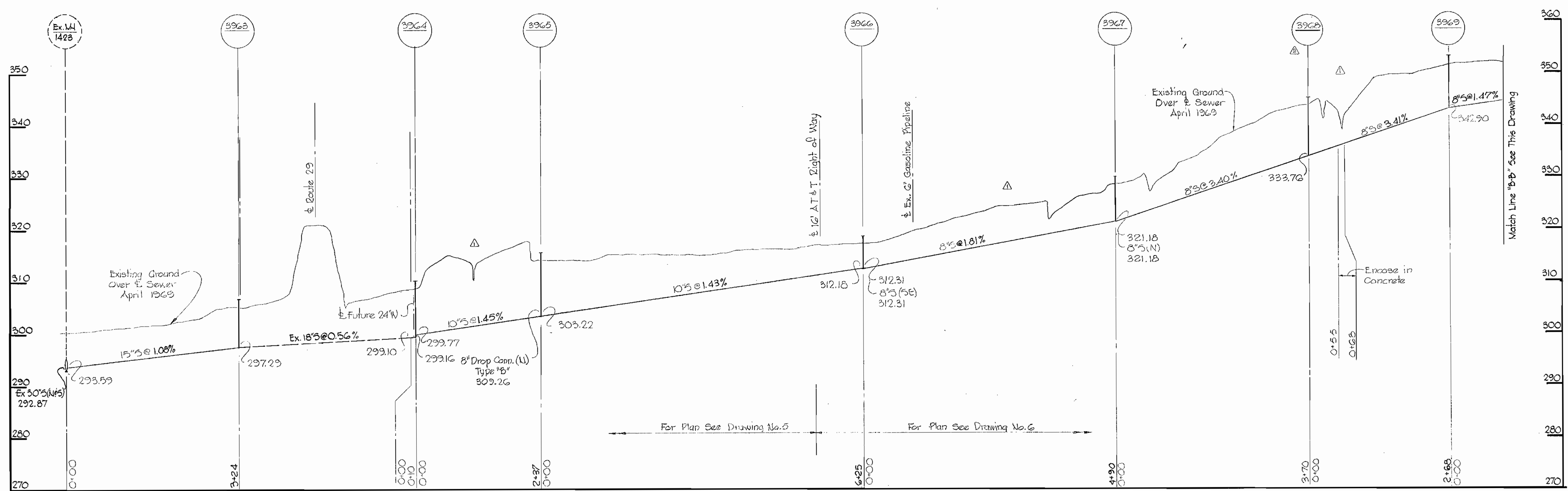
No.	Date	Revision
1	5-20-69	Revised Sewer between Manholes 1425 & 3931

NOTE:
Build Manholes 3930, 3931, 3933 through 3941 & 4007, 1'-6" above existing ground. Fill ground Manhole. See Detail Drawing No. 12.

For General Notes See Drawing No. 6

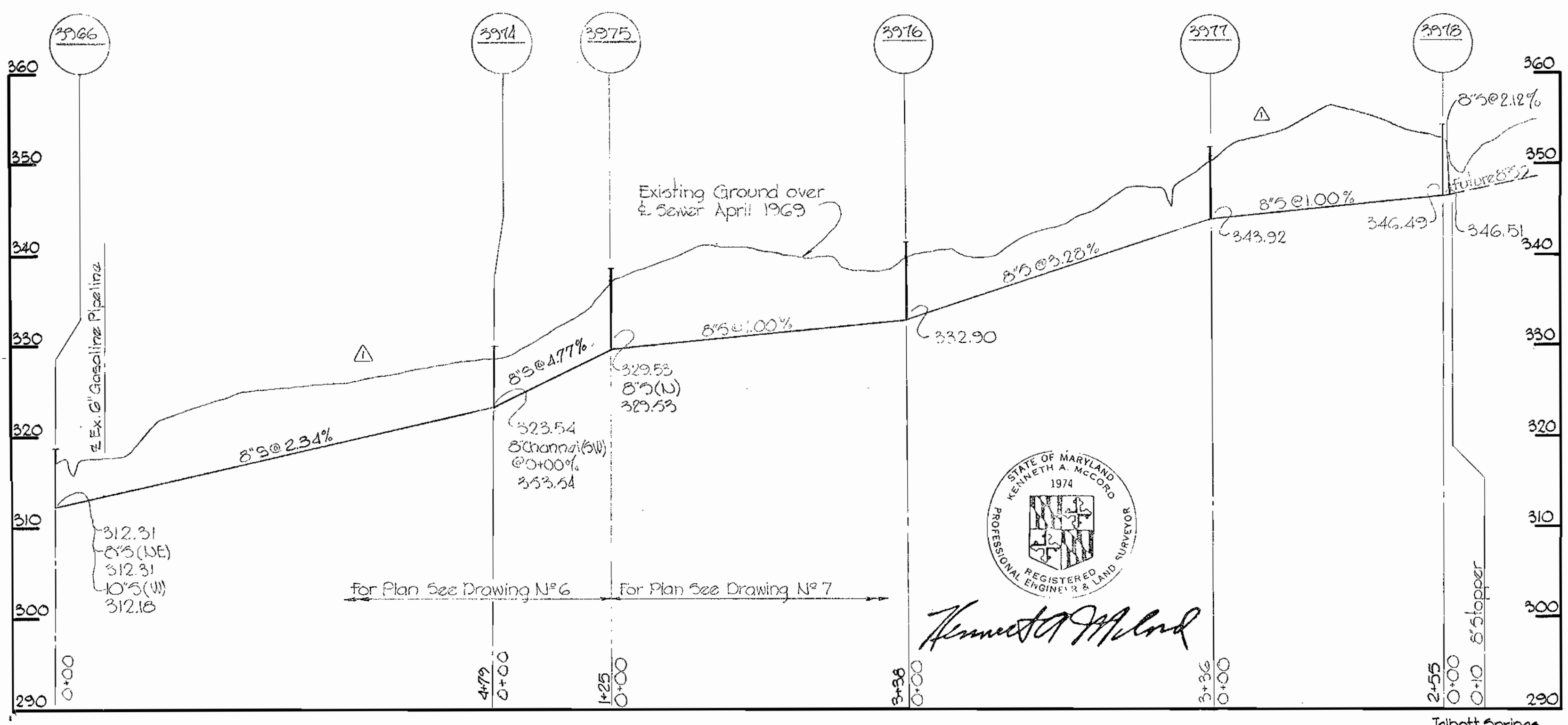
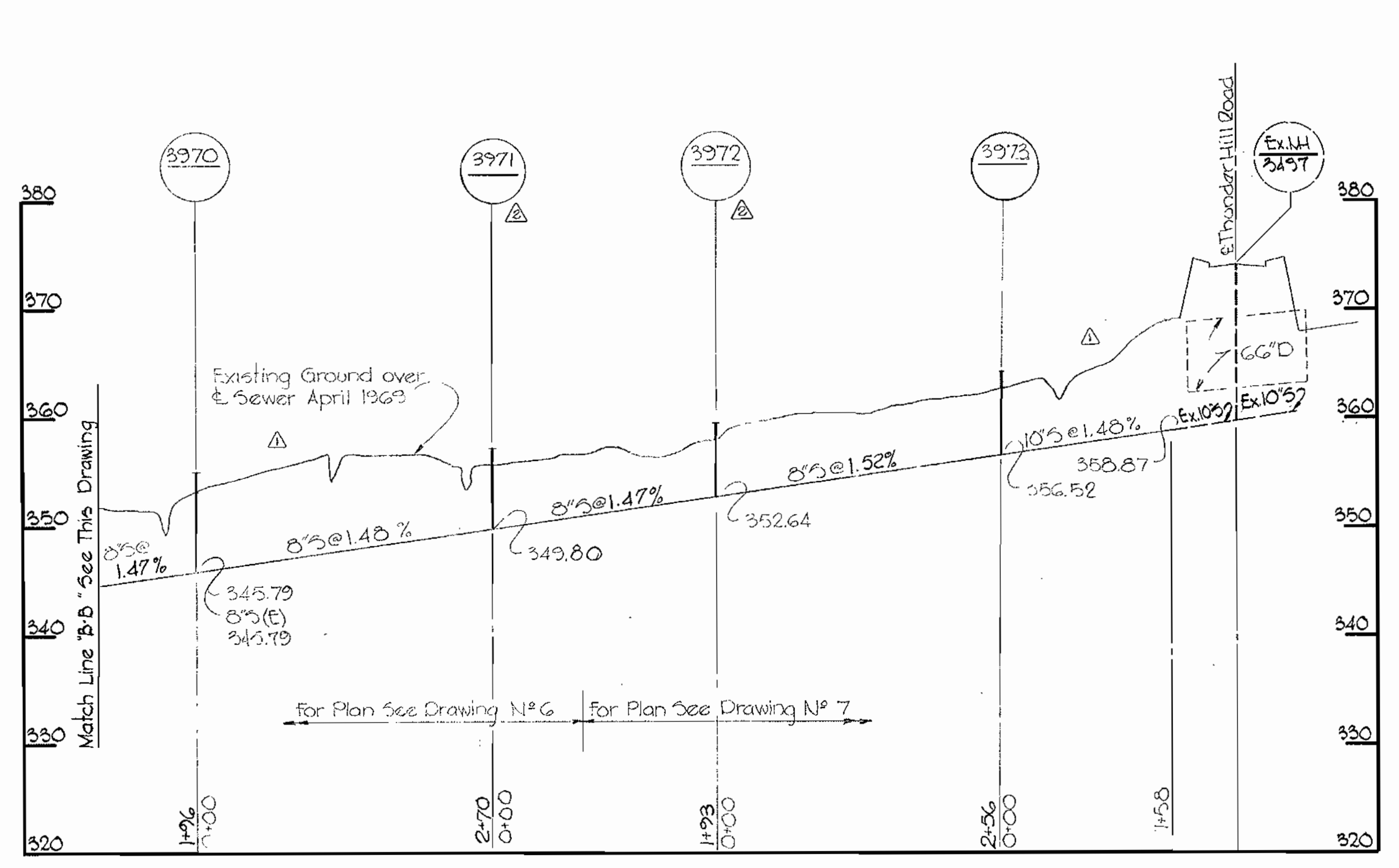


For General Notes See Drawing No. 6



No.	Date	Revisions
△	6-2-69	Revised ground over 4' sewer.
△	6-2-69	Moved Manholes 3971, 3972 & 3968.

NOTE:
Build Manholes 3963 through 3973, 1'-6" above existing ground. Fill around Manholes. See Detail, Drawing No. 12.



Kenneth A. McCord

Talbot Springs
Contract U.C. 295 W&S

WHITMAN, REQUARDT & ASSOCIATES
ENGINEERS
1304 ST. PAUL ST.
BALTIMORE, MARYLAND

HOWARD COUNTY METROPOLITAN COMMISSION
4-28-69 *W O Pelters*
DATE CHIEF ENGINEER

CONTRACT NO. C-295 W&S

PROFILES OF
WATER & SEWER MAINS

COLUMBIA
VILLAGE OF OAKLAND MILLS
ELECTION DISTRICT GUILFORD NO. 6

DRAWING
NO. 11
OF 14

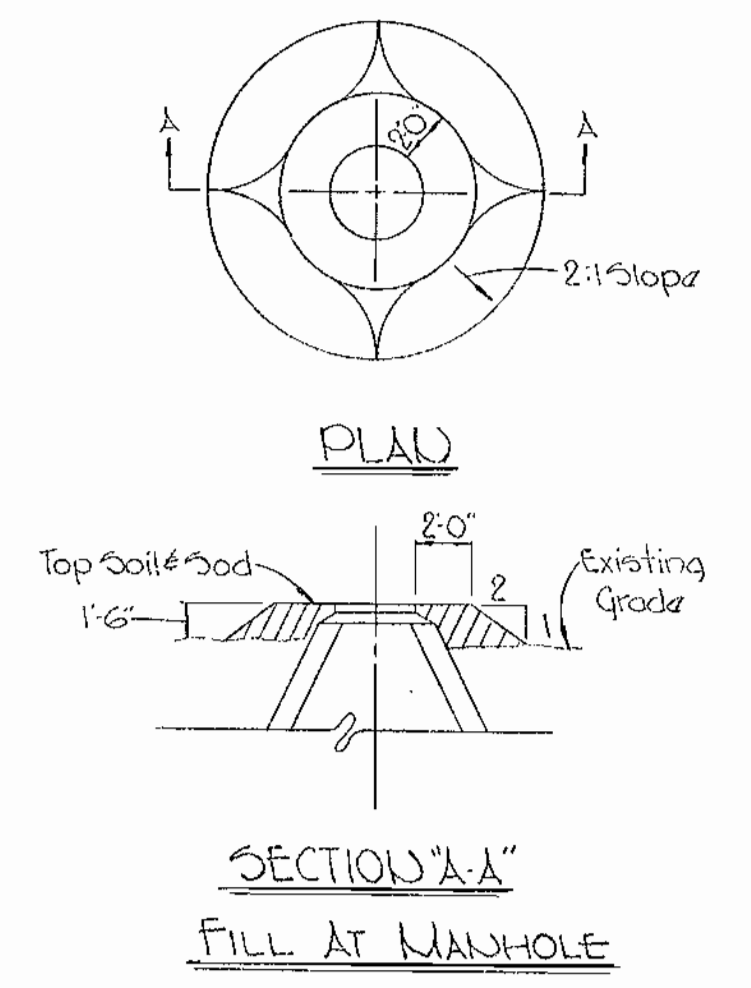
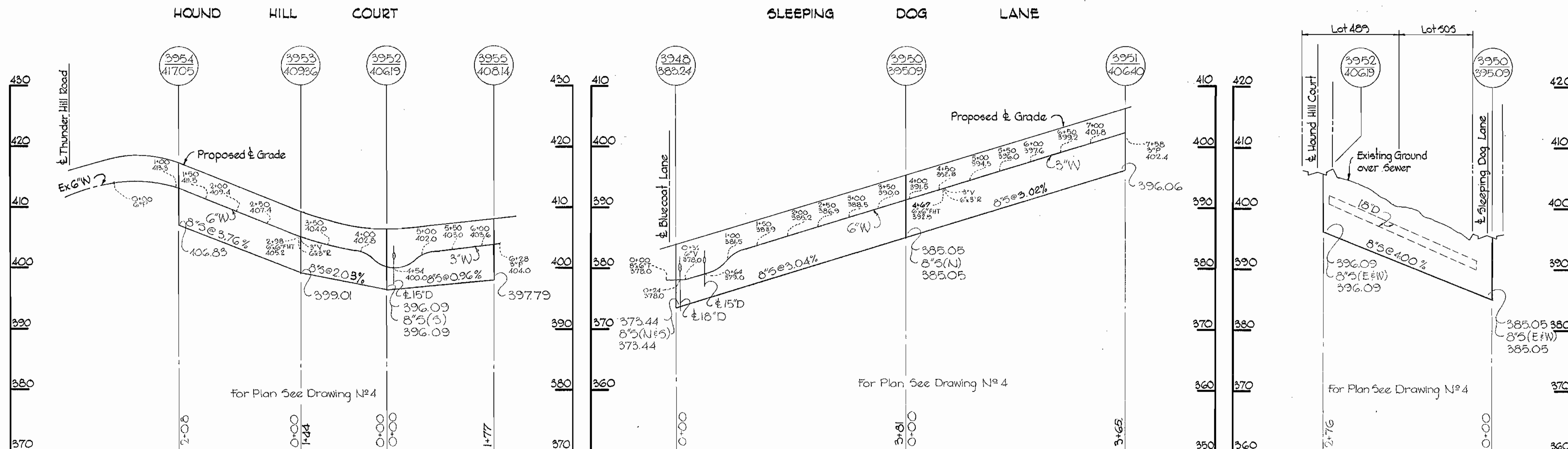
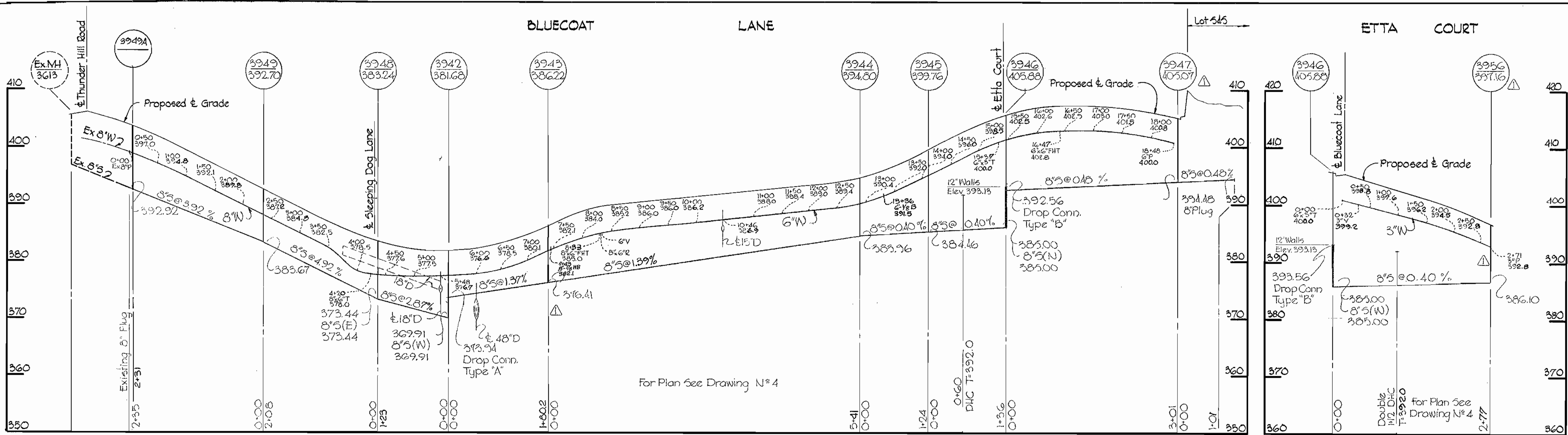
SCALE
H-1"=100'
V-1"=10'

W. O. 6023-2

AS BUILT Feb. 19 1970

WS 295 W&S/11

For General Notes
See Drawing N° 6



▲ 5-3-69	Revised Sewer Between Manholes 3936 & 3947
W#	Date
	Revision

▲ 6-25-69	Revised Rim Elevations at W#s 3947 & 3956
W#	Date
	Revision

WHITMAN, REQUARDT & ASSOCIATES
ENGINEERS
1304 ST. PAUL ST.
BALTIMORE, MARYLAND

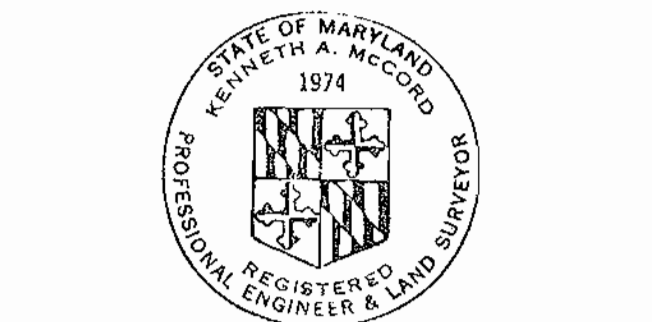
HOWARD COUNTY METROPOLITAN COMMISSION
4-28-69 *W O Falbert*
DATE CHIEF ENGINEER

CONTRACT NO. C-295 W&S

PROFILES OF WATER & SEWER MAINS

COLUMBIA VILLAGE OF OAKLAND MILLS ELECTION DISTRICT GULFORD NO. 6

DRAWING NO. 12 OF 14 SCALE H-1"=100' V-1"=10'



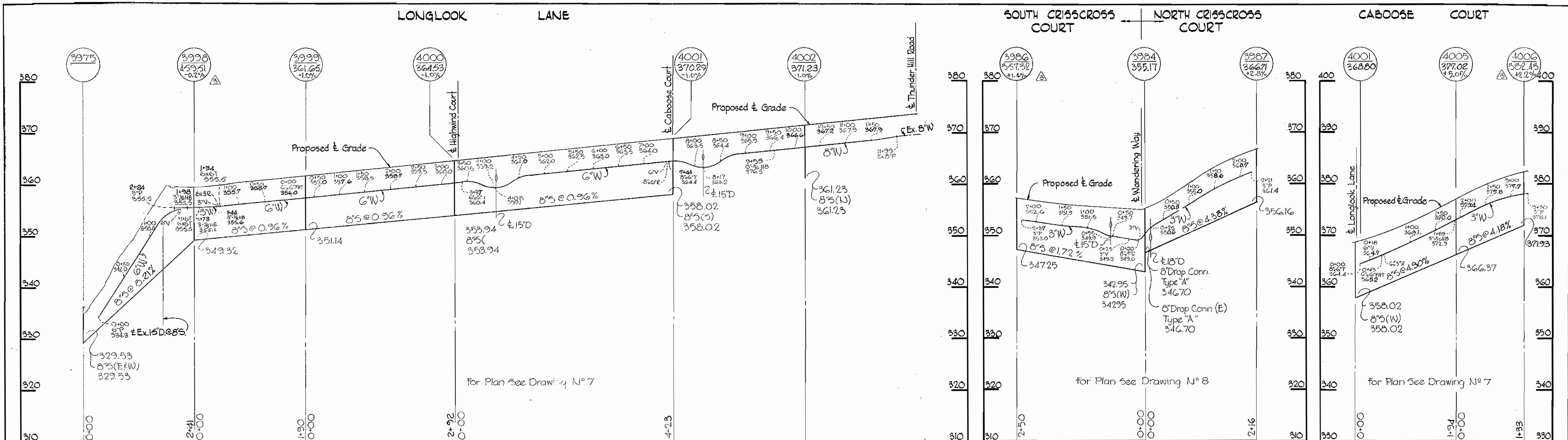
Kenneth A. McCord

Talbot Springs
Contract N° C-295-W&S

AS BUILT Feb. 10, 1970

WS 295 W-5/12

WS 295 W-5/13



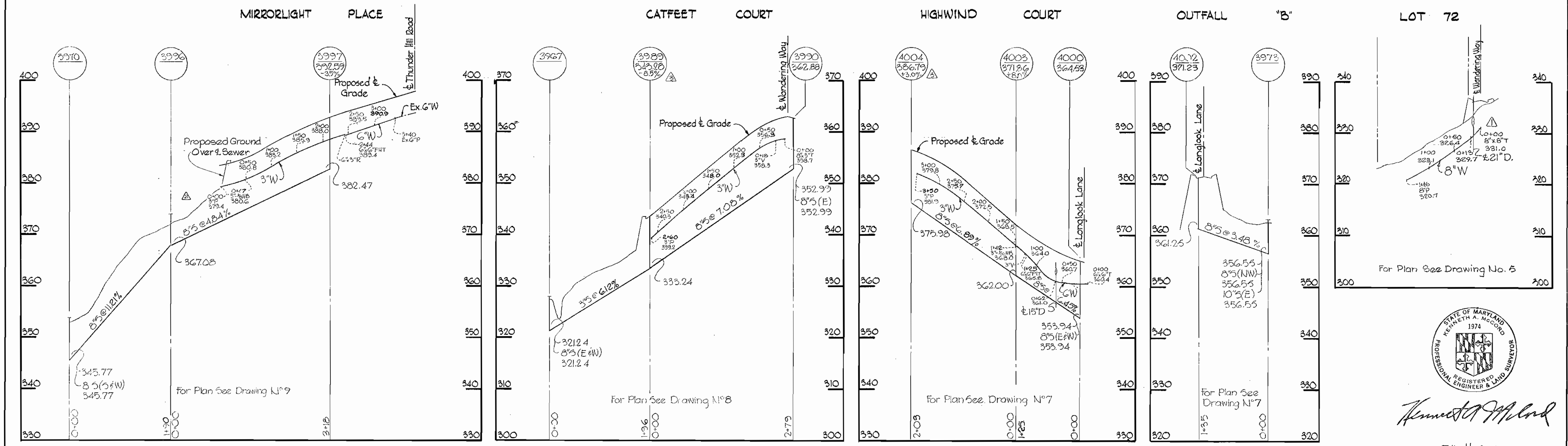
For Plan See Drawing N° 7

For Plan See Drawing N° 8

For Plan See Drawing N° 7

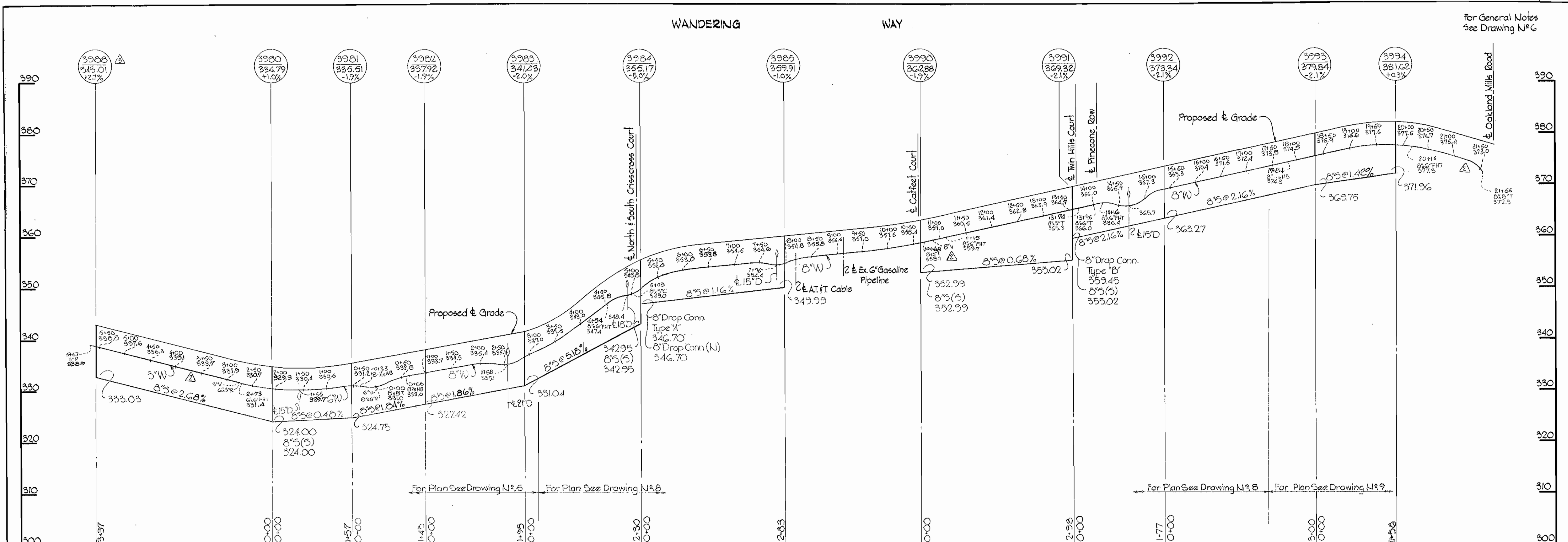
For General Notes See Drawing N° 6

△ 6-25-69	Revised Elev. at W-1's 3998, 3986, 4006, 3989 & 4004
△ 6-2-69	Revised invert @ Manhole 3990
△ 5-9-69	Deleted @ Valve Lot 72
WS	Date
	Revision

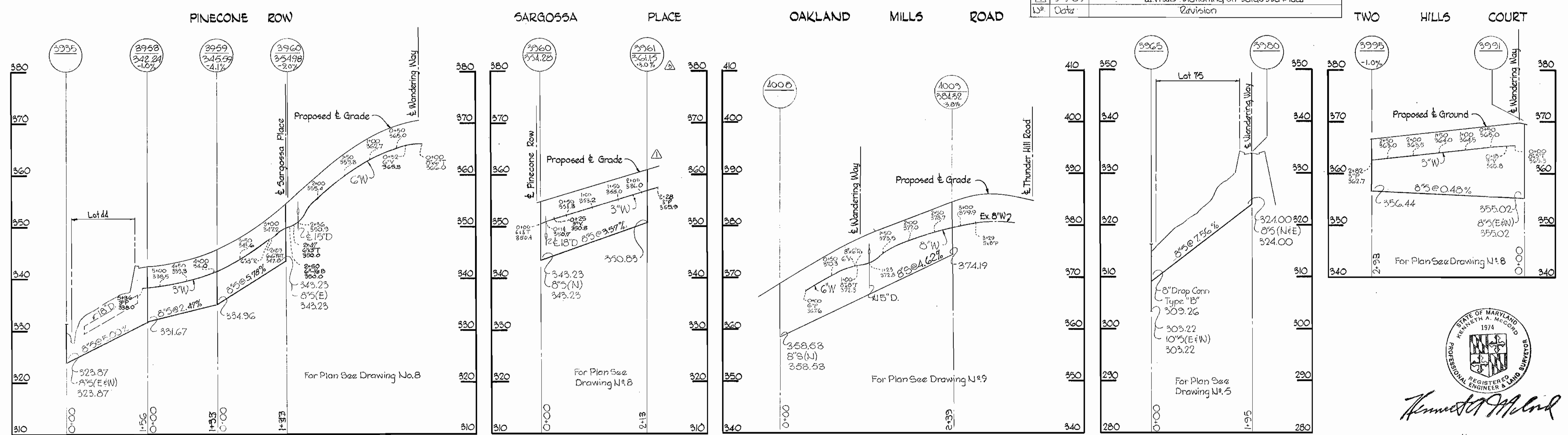


WHITMAN, REQUARDT & ASSOCIATES ENGINEERS 1304 ST. PAUL ST. BALTIMORE, MARYLAND	HOWARD COUNTY METROPOLITAN COMMISSION 4-28-69 DATE <i>W O Filbert</i> CHIEF ENGINEER	CONTRACT NO. C-295 W&S	PROFILES OF WATER & SEWER MAINS	COLUMBIA VILLAGE OF OAKLAND MILLS ELECTION DISTRICT GUILFORD NO. 6	DRAWING NO. 13	SCALE H. 1" = 100'
					OF 14	V. 1" = 10'

WS 295 WS/14



△ 6-25-69	Revised Rim Elevations at N13 3961 & 3993
△ 5-3-69	Revised Stationing and E/Valve on Wandering Way
△ 5-3-69	Revised Stationing on Saragossa Place
U ²	Date Revision



WHITMAN, REQUARDT & ASSOCIATES
ENGINEERS
1304 ST. PAUL ST.
BALTIMORE, MARYLAND

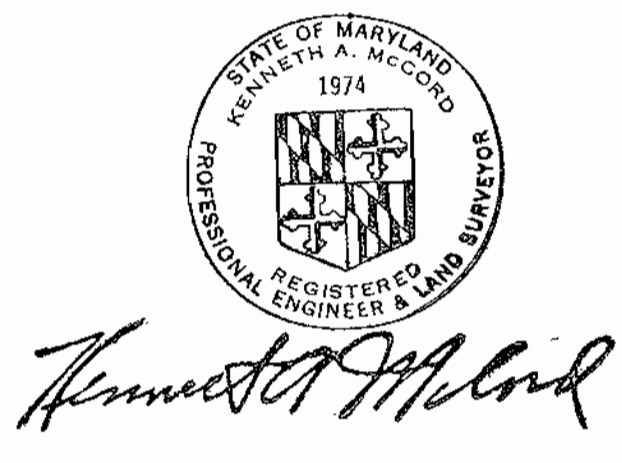
HOWARD COUNTY METROPOLITAN COMMISSION
4-28-69 *W O Gilbert*
DATE CHIEF ENGINEER

CONTRACT NO. C-295 W&S

PROFILES OF
WATER & SEWER MAINS

COLUMBIA
VILLAGE OF OAKLAND MILLS
ELECTION DISTRICT GUILFORD NO. 6

DRAWING NO. 14	SCALE H-1"=100'
OF 14	V-1"=10'



Talbot Springs
Contract No. C-295 W&S

AS BUILT Feb. 10, 1970