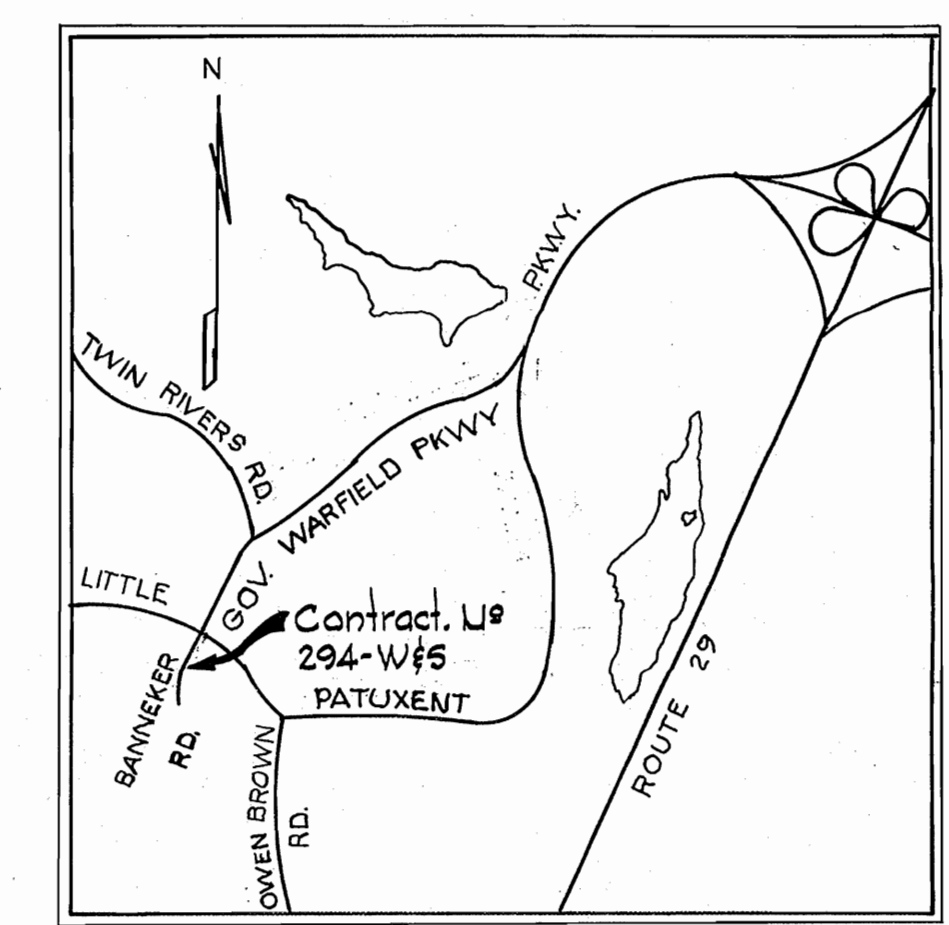
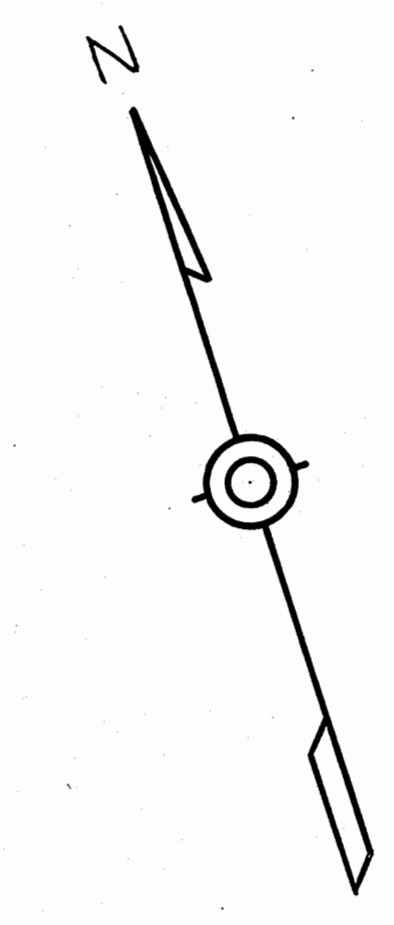


502200 H
502350 E

502750 N
502900 E



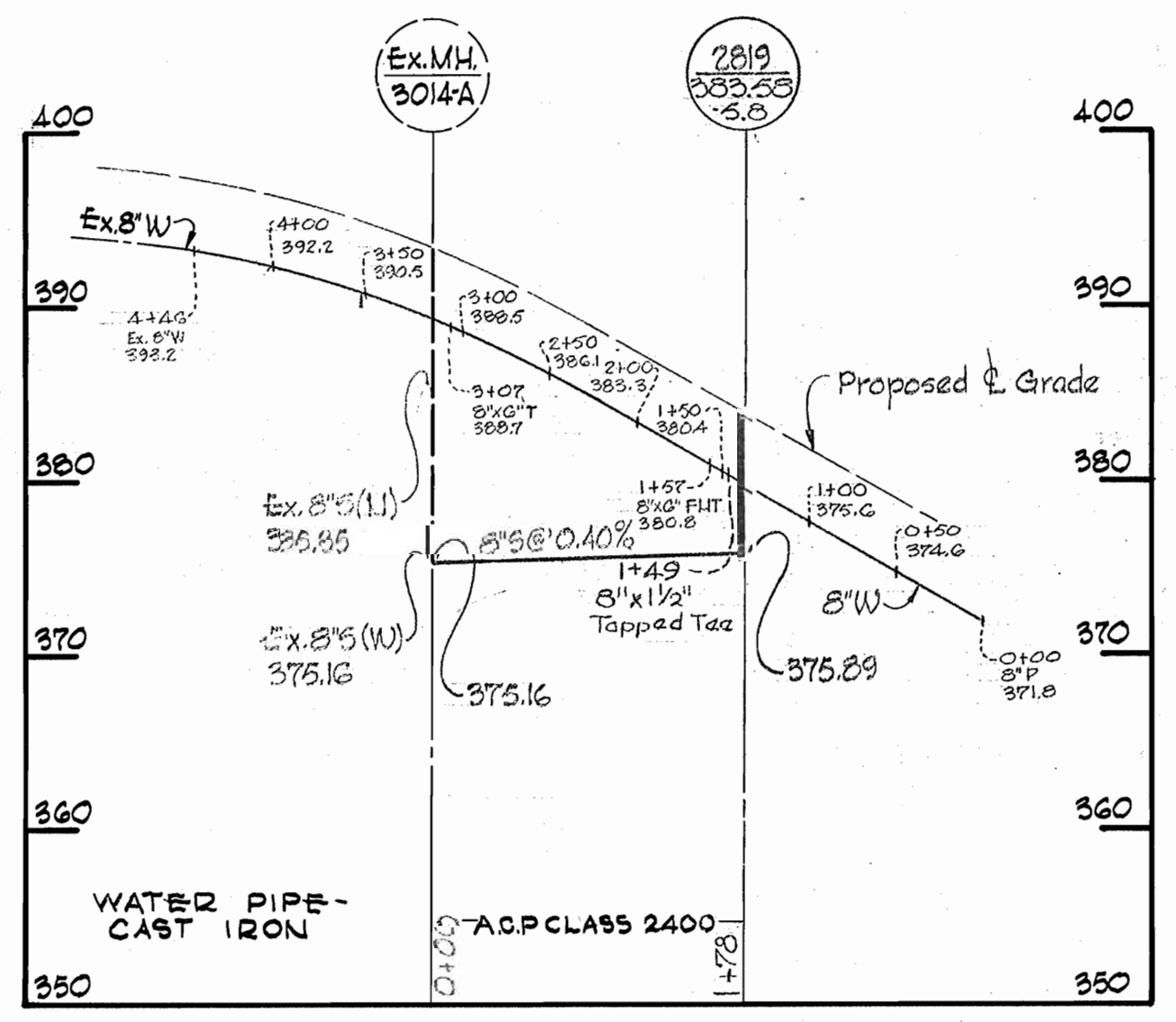
VICINITY MAP
Scale: 1" = 2000'

GENERAL NOTES

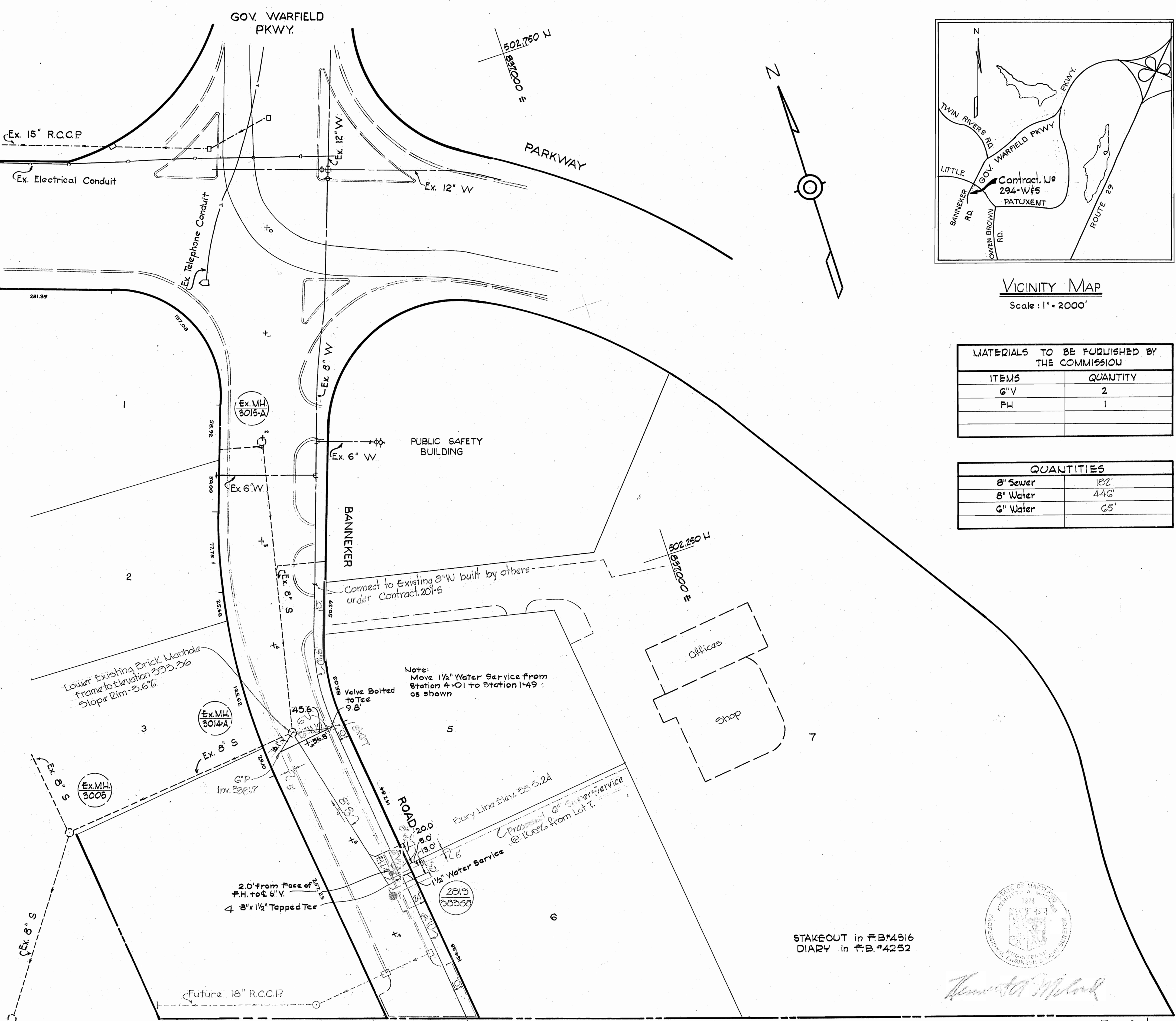
1. Approximate location of existing mains are shown. The Contractor shall take all necessary precautions to protect existing mains and services and maintain uninterrupted supply. Any damage incurred shall be repaired immediately.
2. All pipe elevations shown are invert elevations.
3. The Contractor shall locate existing utilities a minimum of two weeks in advance of construction operations in vicinity of utilities.
4. For all standard details see standards bound in Specifications.
5. All water mains to be C.I.P. or D.I.P. and have a minimum of 3/2' cover.
6. Block all fittings with concrete, see standard details bound in Specifications.
7. Bury line elevations on fire hydrants shall be set to elevations shown on drawings.
8. All fire hydrants shall be strapped to Tee and buttressed with concrete in accordance with Standard Detail W-4.
9. Clear all utilities by a minimum of 6", clear all poles by 2'-0" minimum or tunnel as required.
10. The Contractor shall provide a joint in all sewer mains within 2'-0" of exterior manhole walls.
11. All sewer mains shall be CSPX, VCPX or ACP Class 2400.

MATERIALS TO BE FURNISHED BY THE COMMISSION	
ITEMS	QUANTITY
G" V	2
PH	1

QUANTITIES	
8" Sewer	182'
8" Water	446'
6" Water	65'



PROFILE
Horiz: 1" = 100'
Vert: 1" = 10'



STAKEOUT in F.B.#4316
DIARY in F.B.#4252



Town Center
Contract No. 294-W&S

WHITMAN, REQUARDT & ASSOCIATES ENGINEERS 1304 ST. PAUL ST. BALTIMORE, MARYLAND	HOWARD COUNTY METROPOLITAN COMMISSION DATE _____ CHIEF ENGINEER _____	CONTRACT NO. C-294W&S	PLAN AND PROFILE OF SEWER MAINS	COLUMBIA TOWN CENTER ELECTION DISTRICT-CLARKSVILLE NO.5	DRAWING NO. 1 OF 1	SCALE AS SHOWN
-----------------------------------------------------------------------------------------	--------------------------------------------------------------------------	-----------------------	------------------------------------	---------------------------------------------------------------	--------------------------	----------------------

W. O. 6023-2

AS BUILT MARCH 13, 1969

February 11, 1969

WS 294 W&S/1