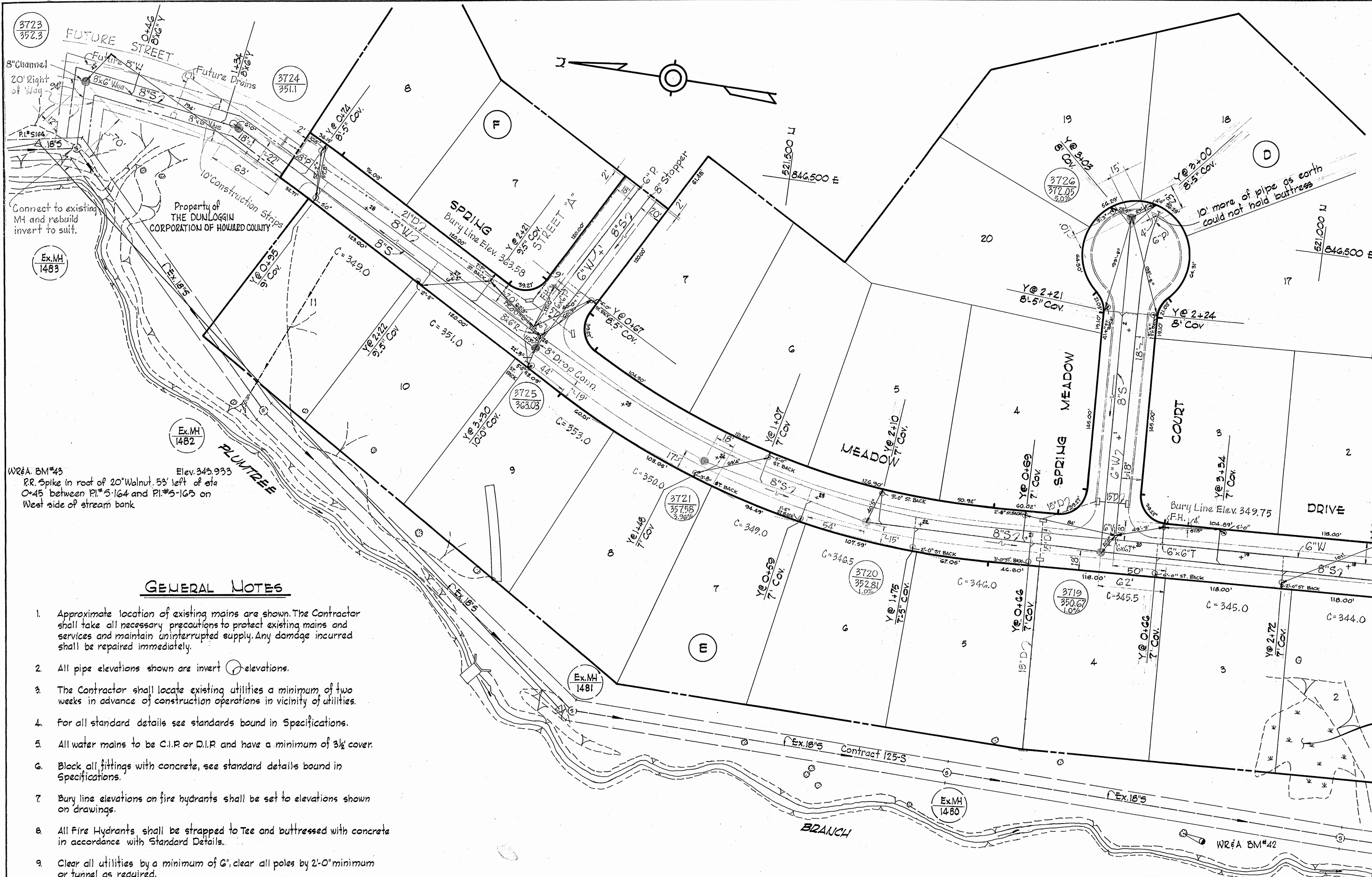


VICINITY MAP
Scale: 1" = 2000'



GENERAL NOTES

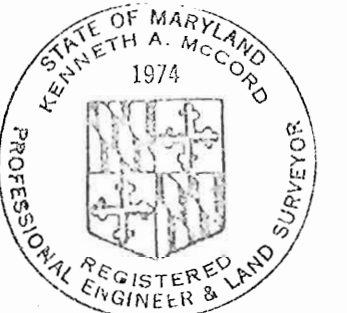
1. Approximate location of existing mains are shown. The Contractor shall take all necessary precautions to protect existing mains and services and maintain uninterrupted supply. Any damage incurred shall be repaired immediately.
2. All pipe elevations shown are invert (I) elevations.
3. The Contractor shall locate existing utilities a minimum of two weeks in advance of construction operations in vicinity of utilities.
4. For all standard details see standards bound in Specifications.
5. All water mains to be C.I.P. or D.I.P. and have a minimum of 3 1/2' cover.
6. Block all fittings with concrete, see standard details bound in Specifications.
7. Bury line elevations on fire hydrants shall be set to elevations shown on drawings.
8. All Fire Hydrants shall be strapped to Tee and buttressed with concrete in accordance with Standard Details.
9. Clear all utilities by a minimum of 6'; clear all poles by 2'-0" minimum or tunnel as required.
10. The Contractor shall provide a joint in all sewer mains within 2'-0" of exterior manhole walls.
11. All horizontal and vertical controls are based on Maryland State Datum.

All is destroyed by Hoch Truck 'H.F.S.'

QUANTITIES	
8" Sewer	2000'
8" Water	1000'
6" Water	1470'
Fire Hydrants	2

PLAN
Scale: 1" = 50'

W.R.&A. B.M.#42 Elev. 340.578
R.R. spike on side of 24" Oak 20' left of sta. 4+70 between 5+182 & 5+163.



Kenneth A. McLeod

Stakeout & Diary in P.B.# 4338 Dunlaggin II Section 2 Contract No. 293-W45

WHITMAN, REQUARDT & ASSOCIATES
ENGINEERS
1304 ST. PAUL ST.
BALTIMORE, MARYLAND

HOWARD COUNTY METROPOLITAN COMMISSION

CONTRACT NO. 293-W8S

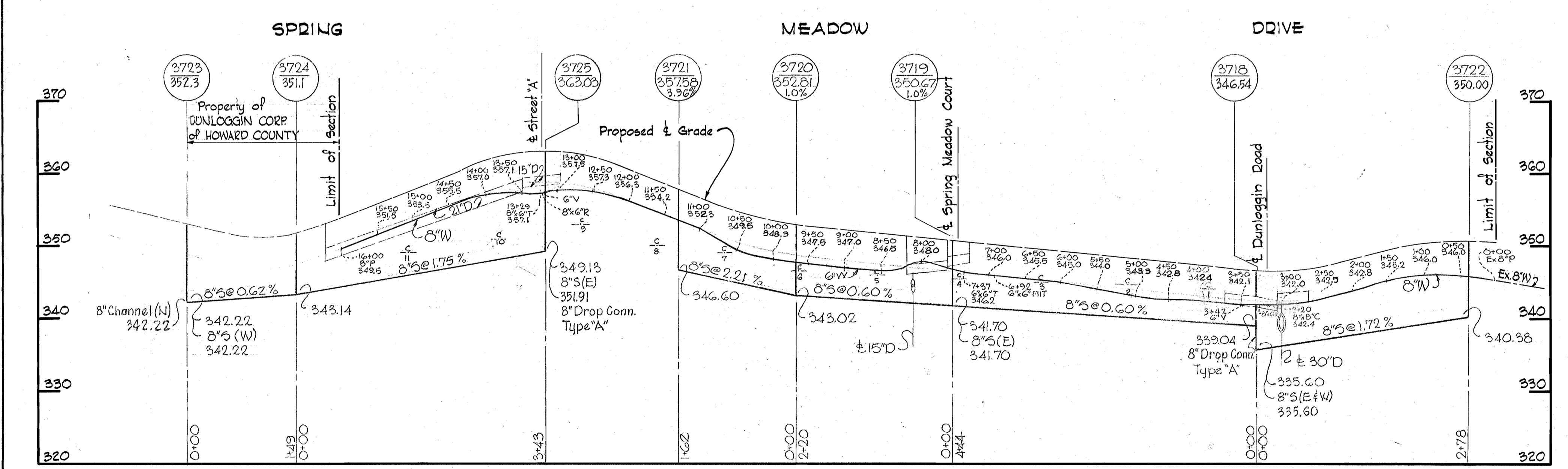
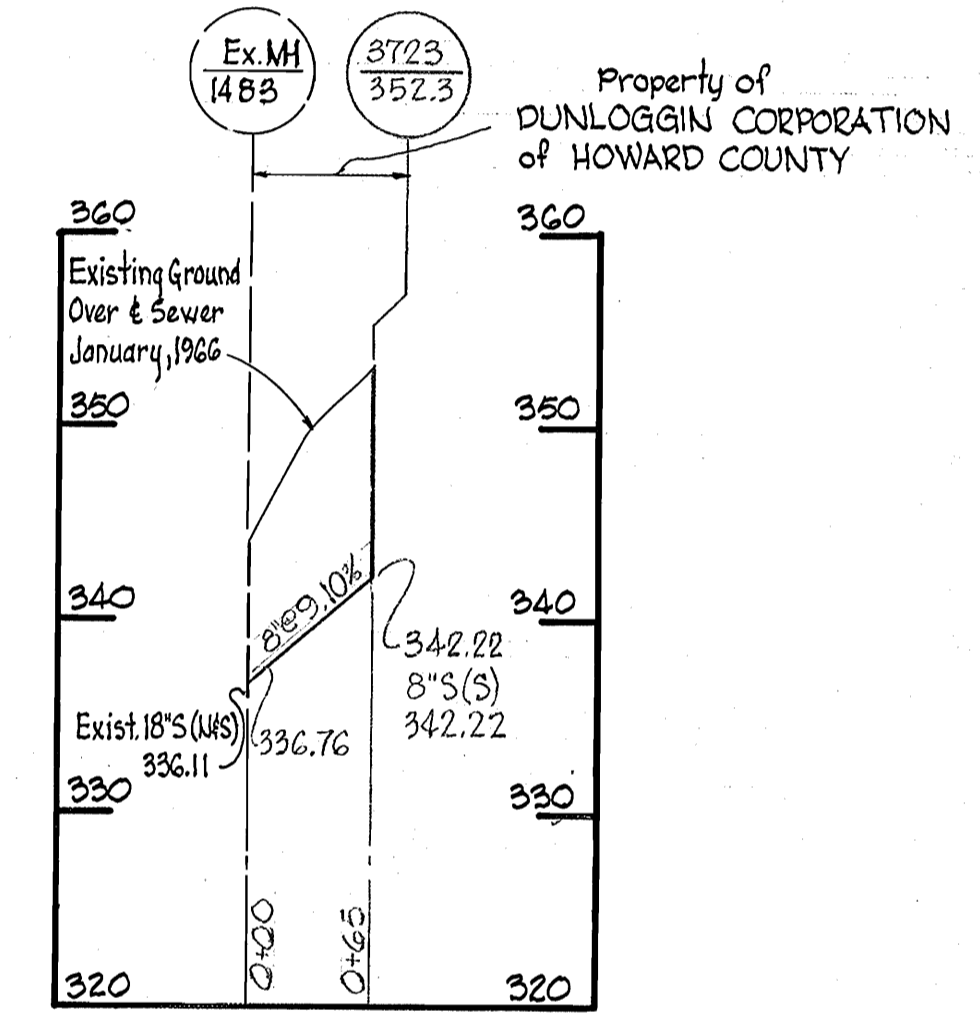
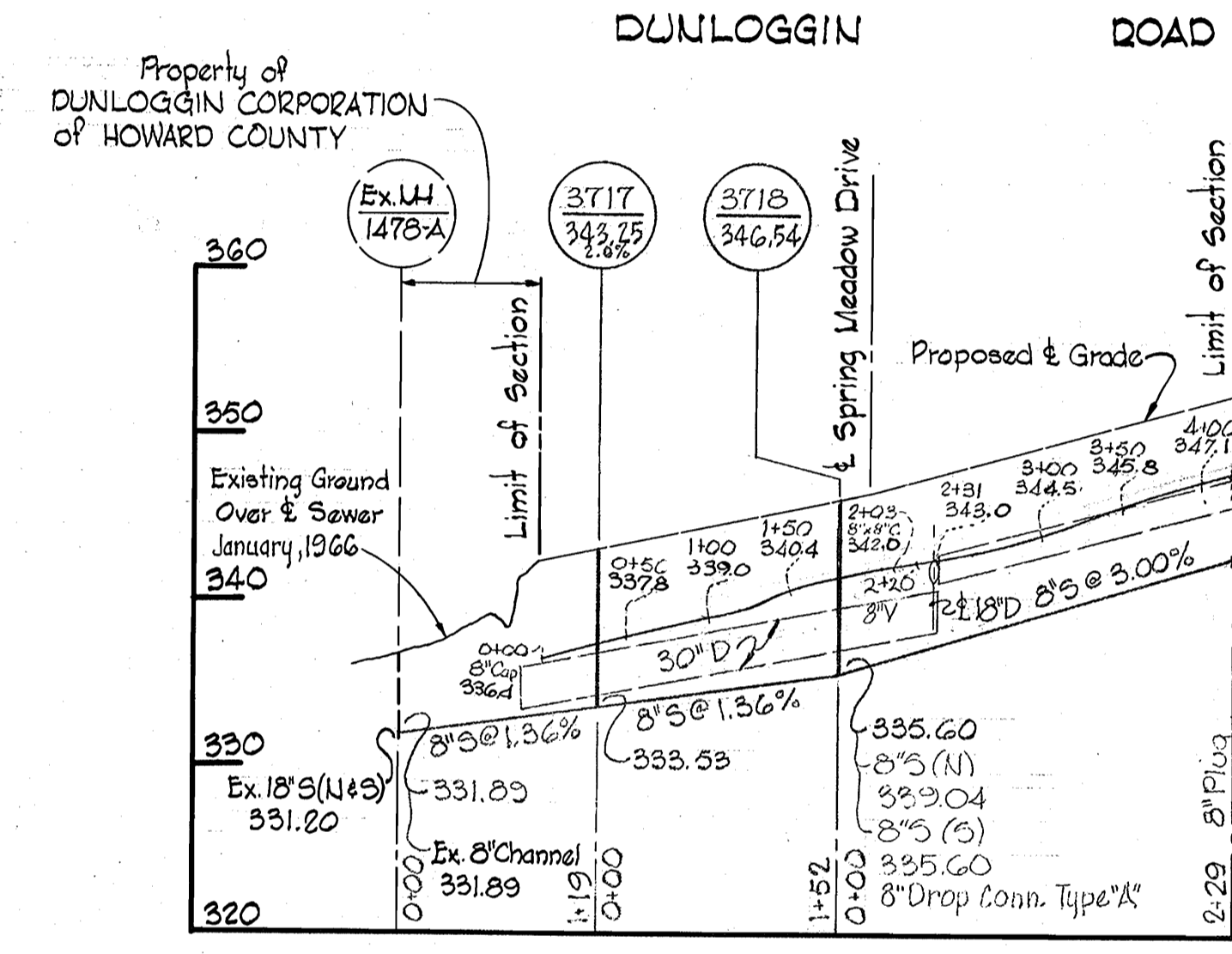
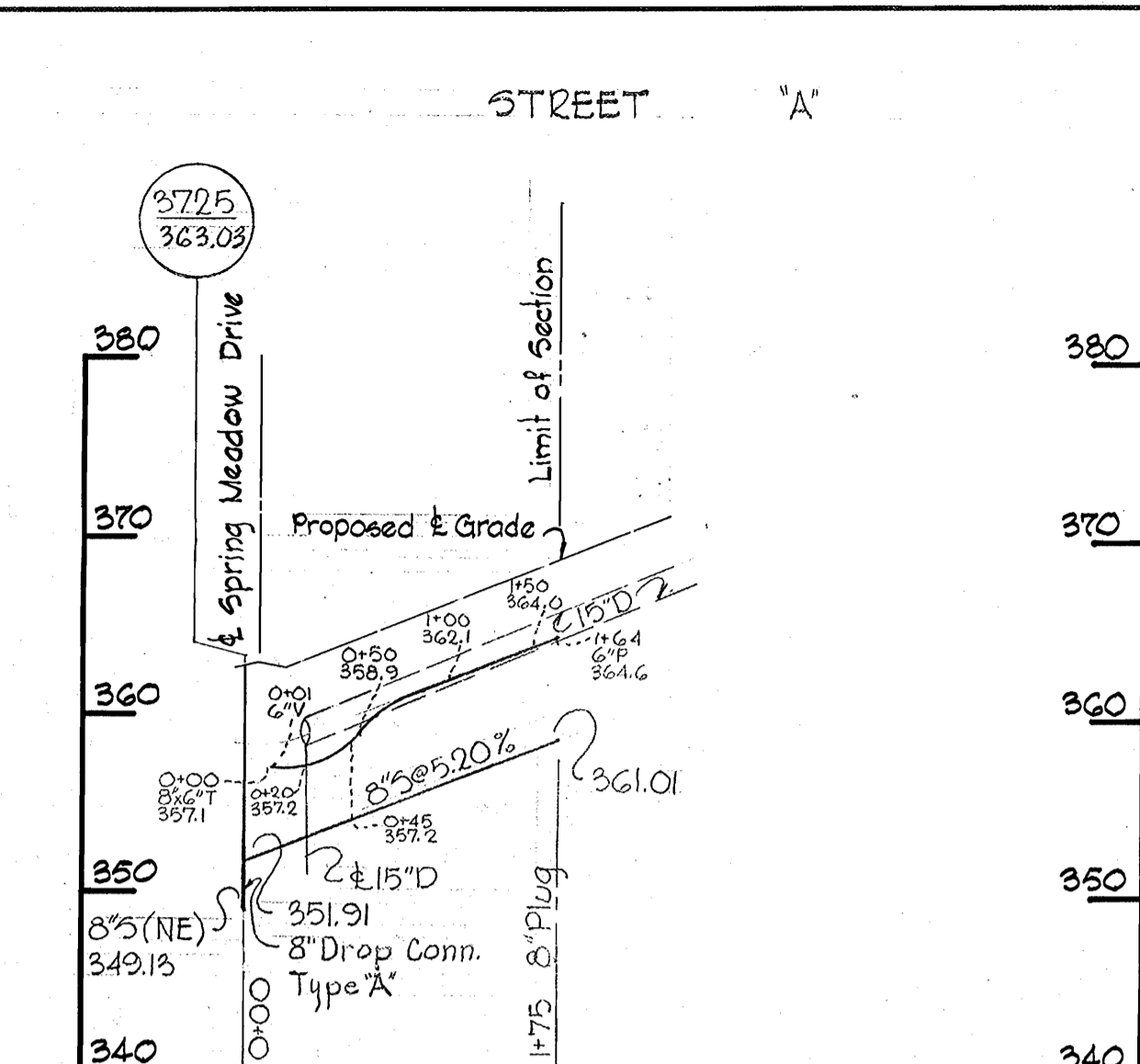
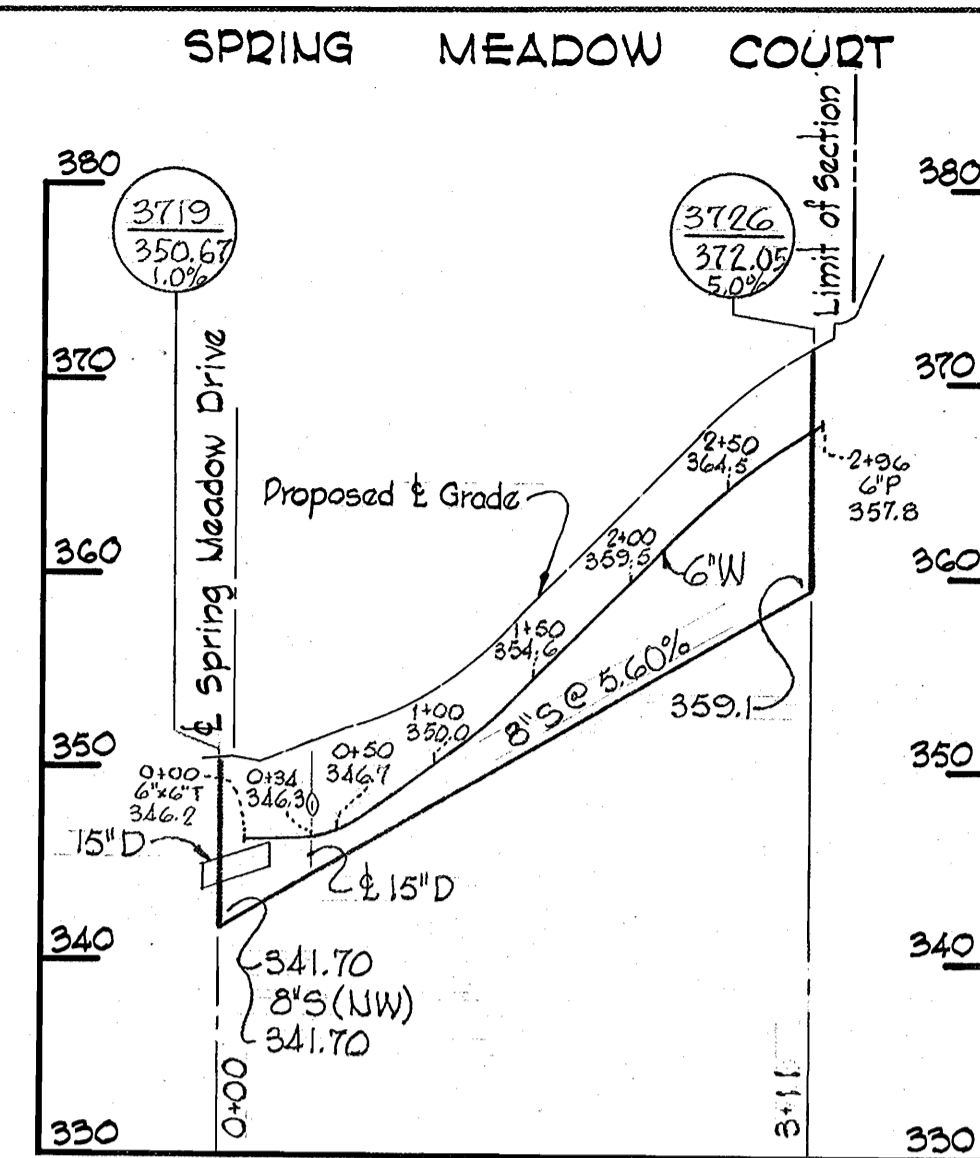
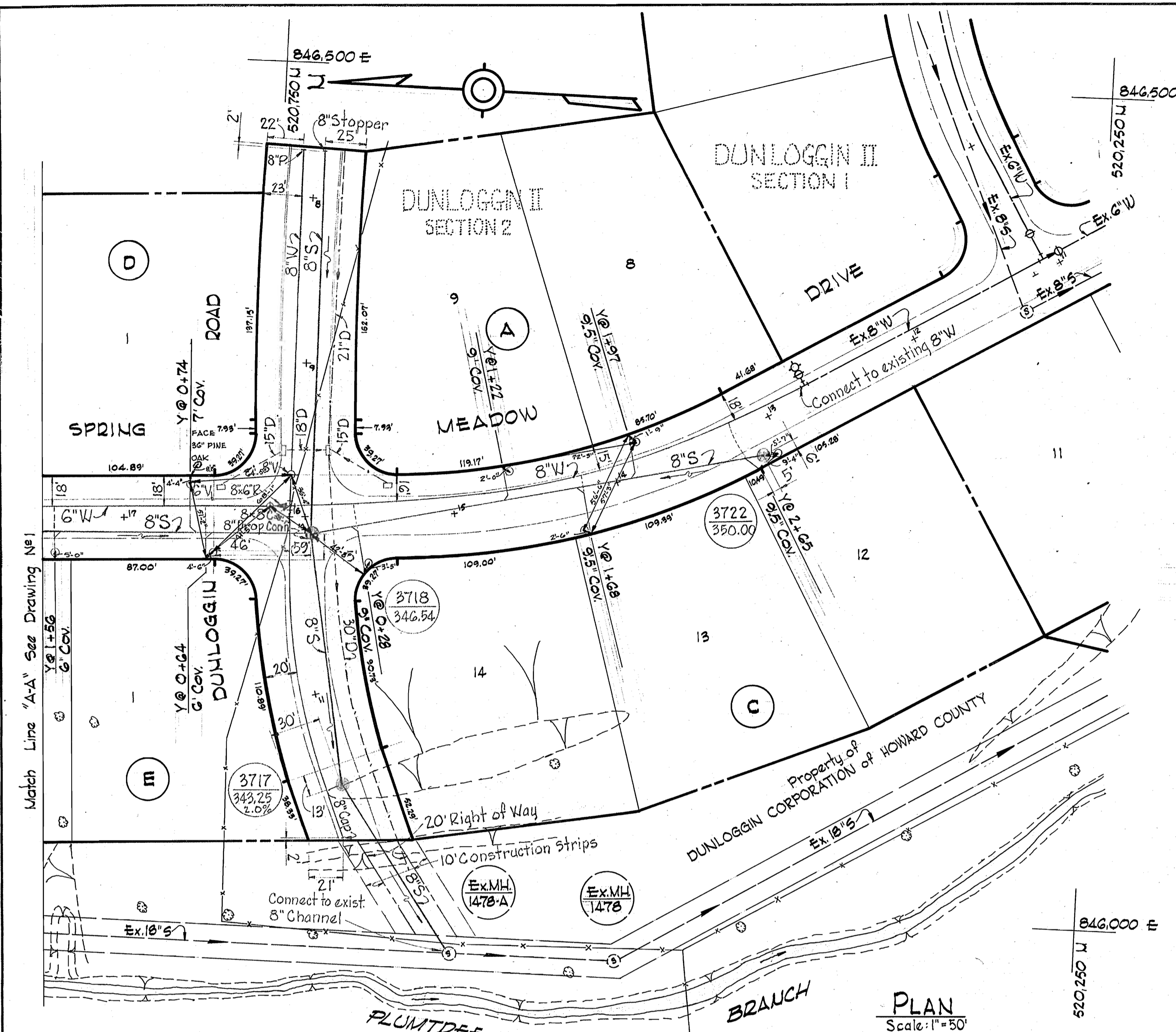
PLAN OF
WATER & SEWER MAINS

ELECTION DISTRICT
ELLCOTT CITY NO. 2

DRAWING
NO. 1
OF 2
SCALE
AS
SHOWN

AS BUILT Oct. 29, 1969

WS 293 W-5/1



PROFILES
 Horiz.: 1"=100'
 Vert.: 1"=10'



Kenneth A. McCord

Dunloggin II Section 2
 Contract No. 293-W&S

WHITMAN, REQUARDT & ASSOCIATES ENGINEERS 1304 ST. PAUL ST. BALTIMORE, MARYLAND	HOWARD COUNTY METROPOLITAN COMMISSION DATE _____ CHIEF ENGINEER _____	CONTRACT NO. 293-W&S	PLAN & PROFILE OF WATER & SEWER MAINS	ELECTION DISTRICT ELLICOTT CITY NO.2	DRAWING NO. 2 OF 2 SCALE AS SHOWN
---	--	----------------------	--	---	--------------------------------------

W. O. 6024-2

AS BUILT Oct. 29, 1974

WS 293 W-S/2