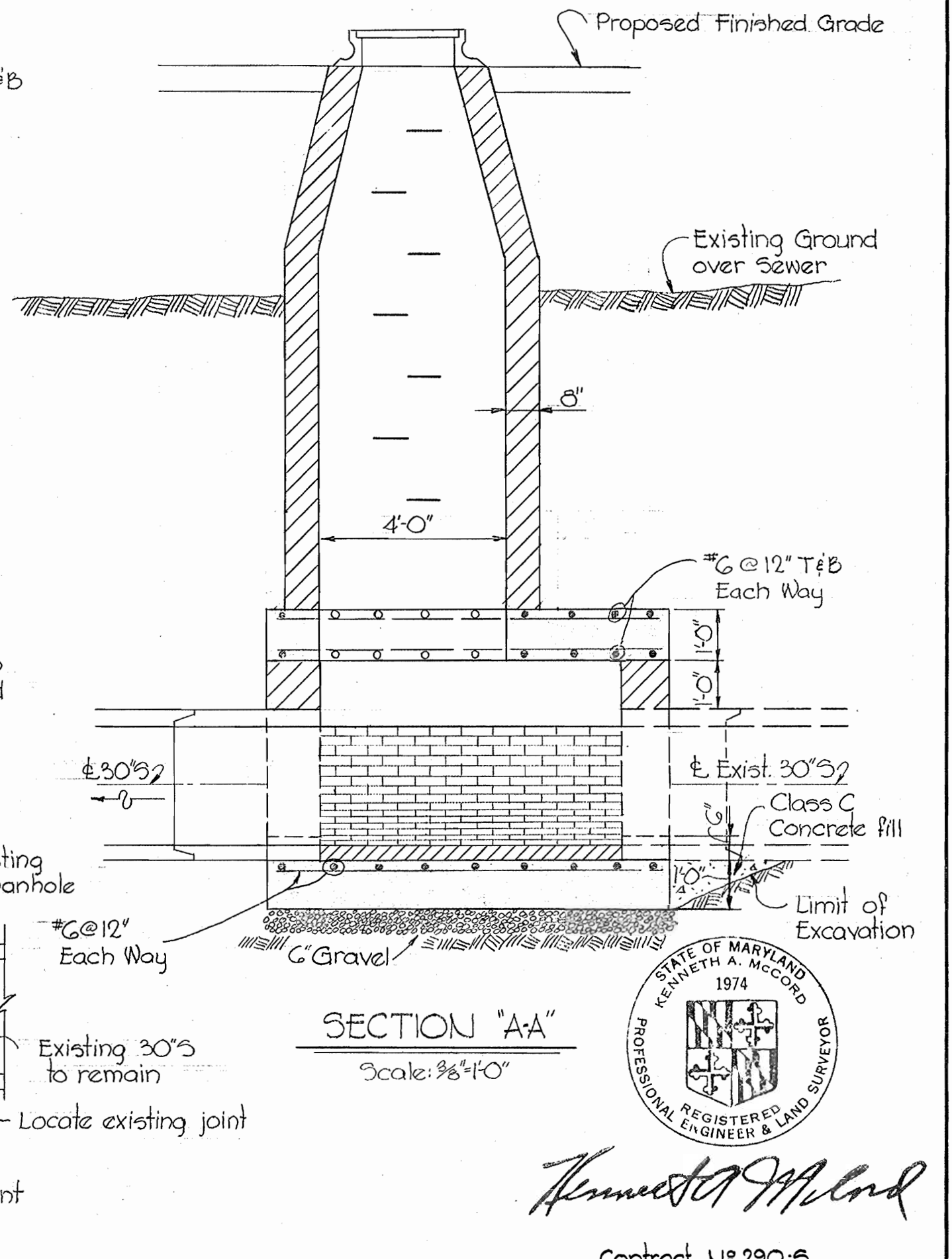
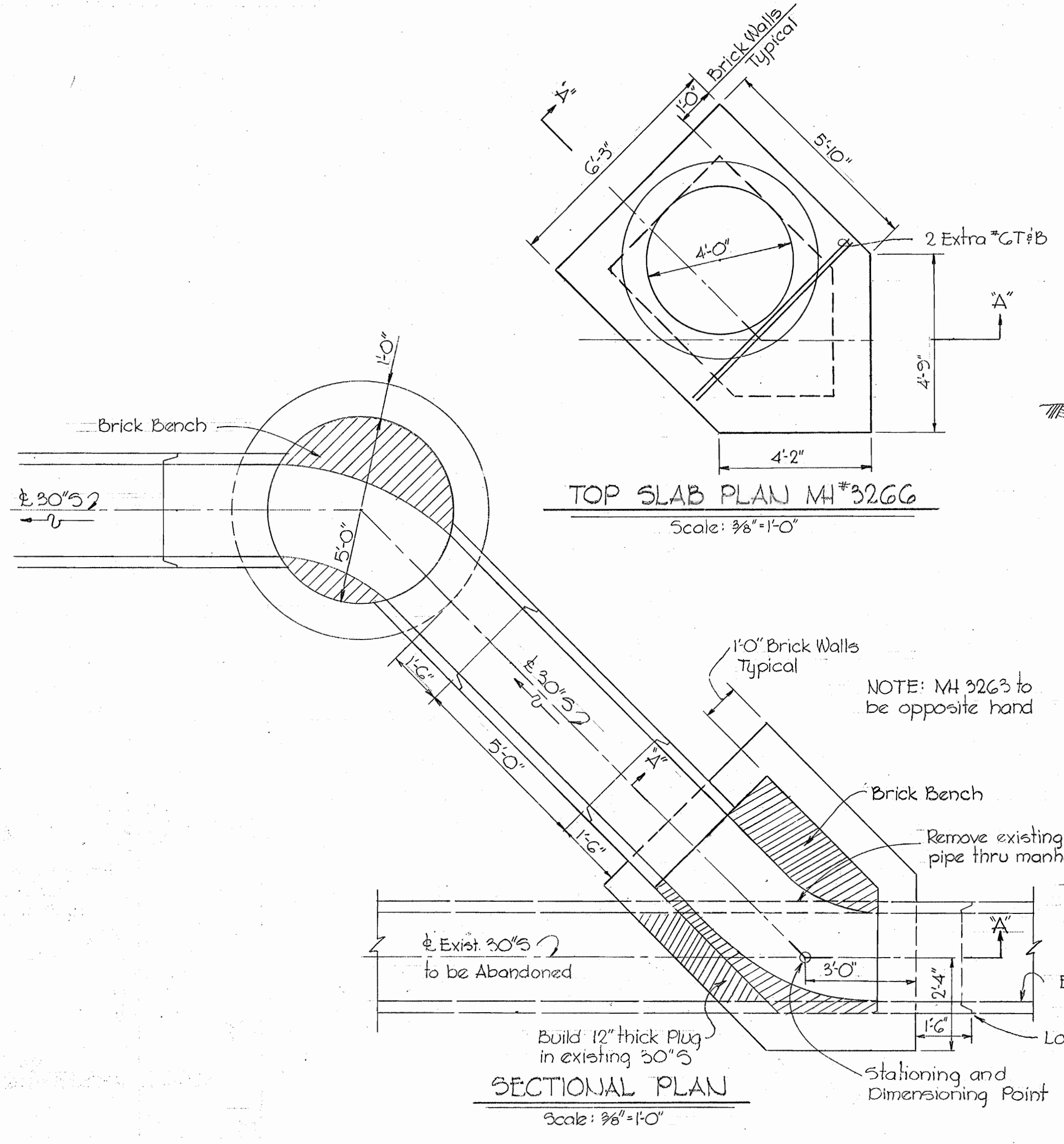
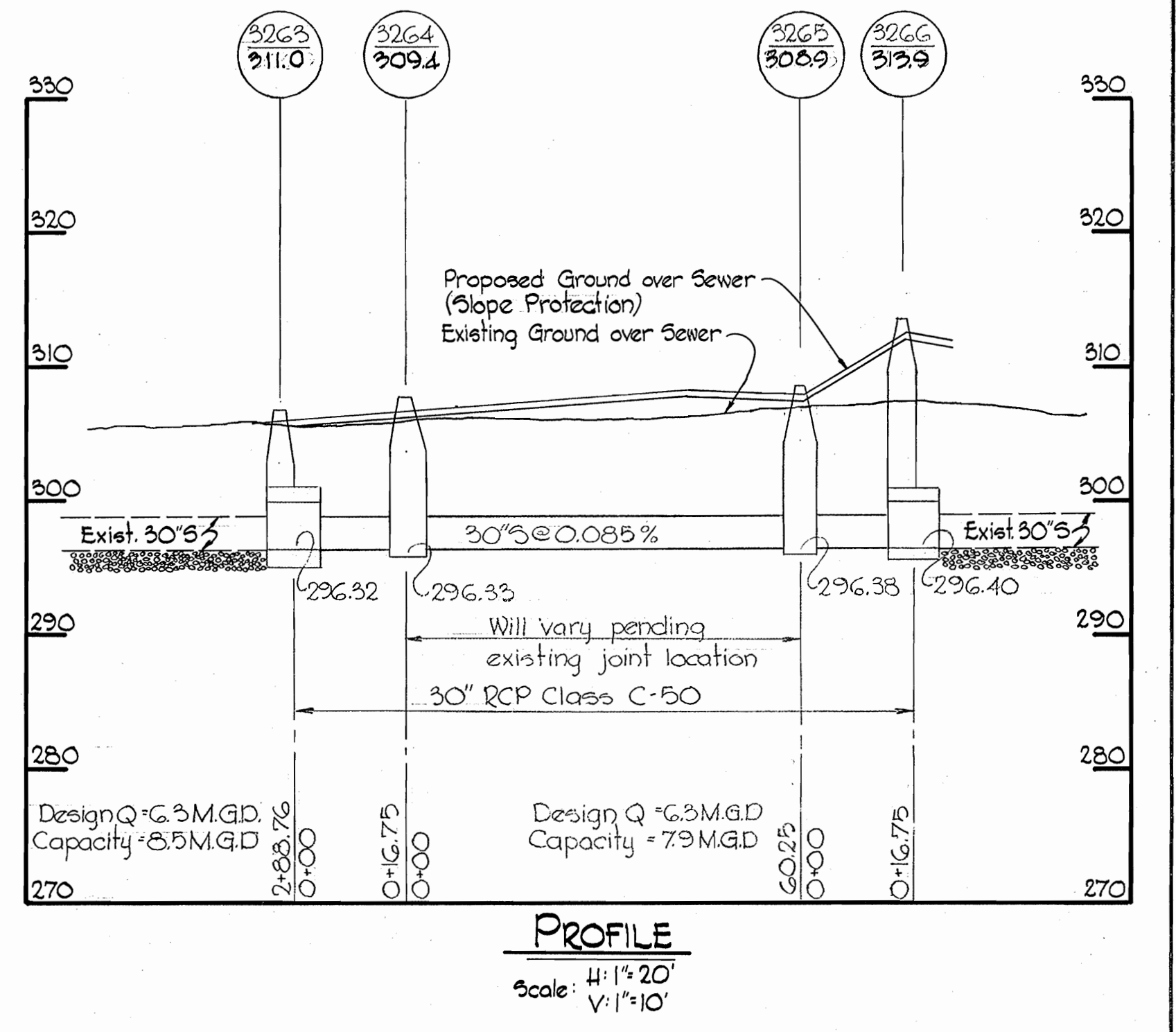


GENERAL NOTES

1. Approximate location of existing mains are shown. The Contractor shall take all necessary precautions to protect existing mains and services and maintain uninterrupted supply. Any damage incurred shall be repaired immediately.
2. All pipe elevations shown are invert elevations.
3. The Contractor shall locate existing utilities a minimum of two weeks in advance of construction activities in the vicinity of the utilities.
4. For all Standard Details see Standards bound in Specifications.
5. The Contractor shall provide a joint in all sewer mains within 2'-0" of exterior manhole walls.



WHITMAN, REQUARDT & ASSOCIATES ENGINEERS 1304 ST. PAUL ST. BALTIMORE, MARYLAND	HOWARD COUNTY METROPOLITAN COMMISSION 12-12-69 DATE	CONTRACT NO. 290-S	PLAN PROFILE AND DETAILS OF A SEWER MAIN	REALIGNMENT - LITTLE PATUXENT INTERCEPTOR SECTION NO. 7	DRAWING NO. 1 OF 1 SCALE AS SHOWN
---	---	--------------------	---	--	---