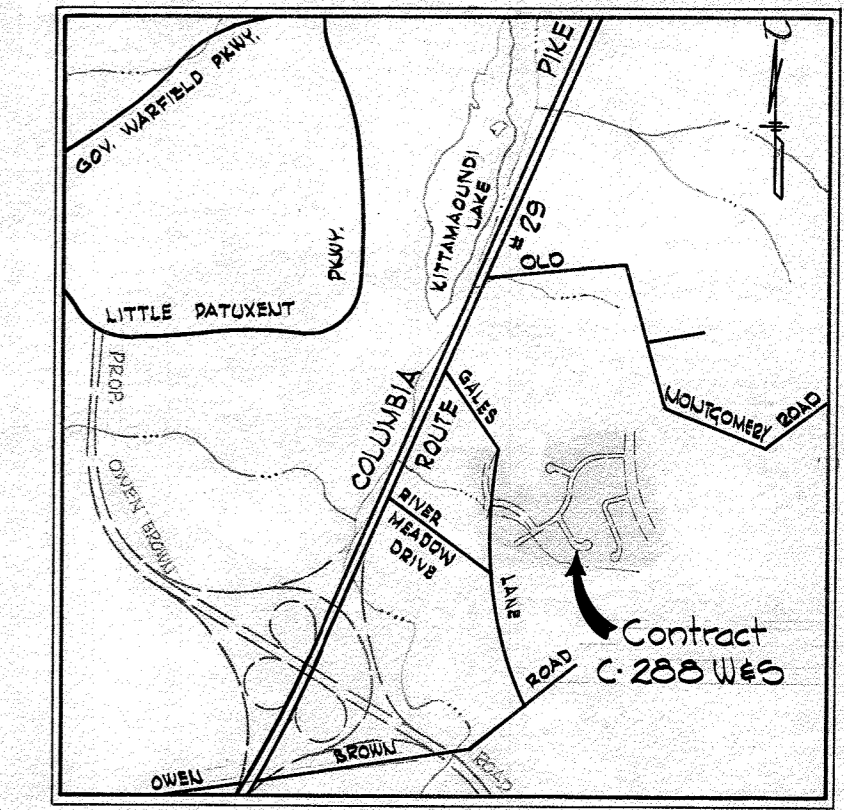


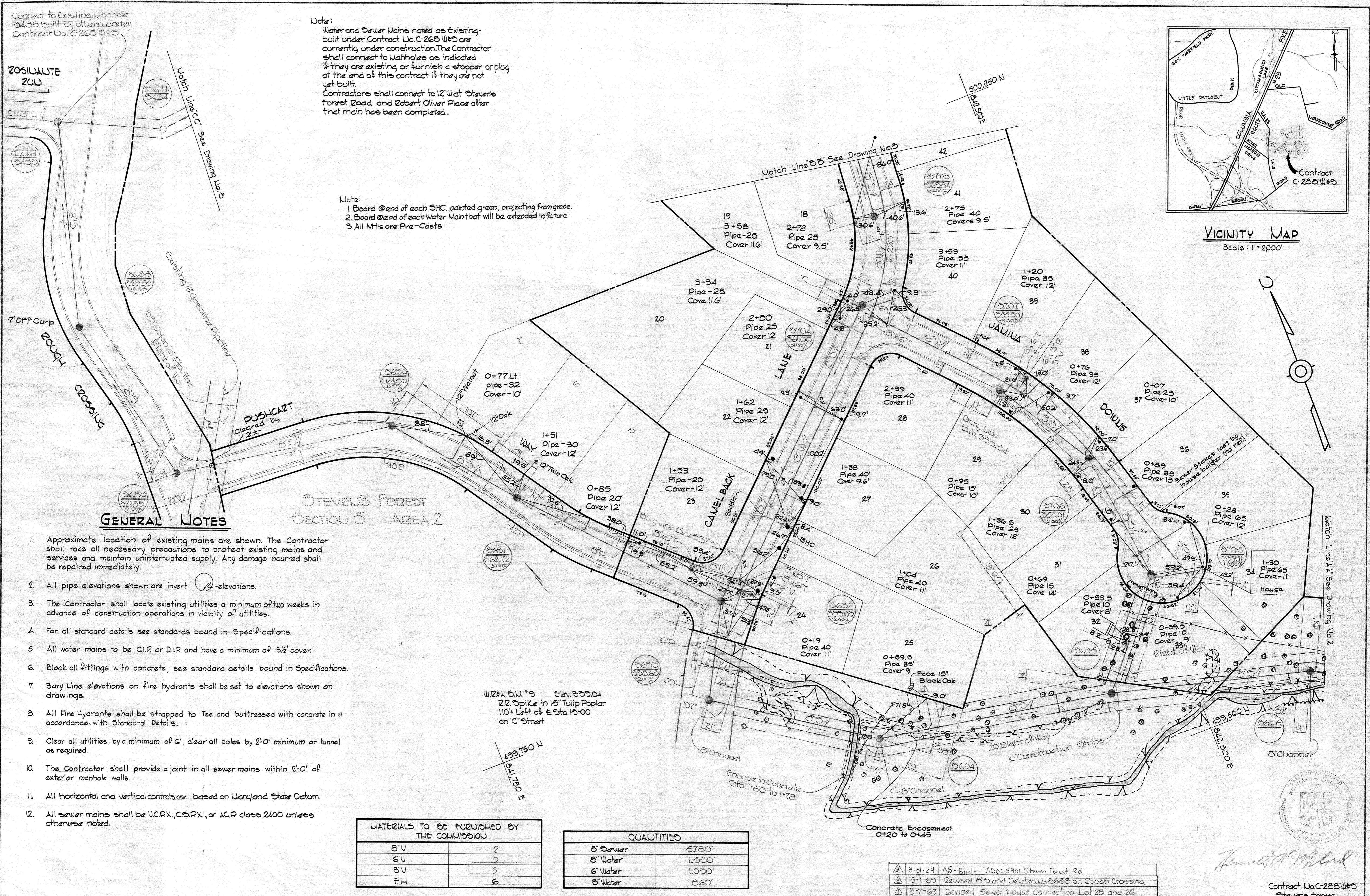
Connect to Existing Manhole
3433 built by others under
Contract No. C-283 W&S

Note:
Water and Sewer Mains noted as Existing-
built under Contract No. C-283 W&S are
currently under construction. The Contractor
shall connect to Manholes as indicated
if they are existing or furnish a stopper or plug
at the end of this contract if they are not
yet built.
Contractors shall connect to 12" W at Stevane
Forest Road and Robert Oliver Place after
that main has been completed.

Note:
1. Board @ end of each SHC, painted green, projecting from grade.
2. Board @ end of each Water Main that will be extended in future.
3. All MHs are Pre-Casts



VICINITY MAP
Scale: 1" = 200'



GENERAL NOTES

1. Approximate location of existing mains are shown. The Contractor shall take all necessary precautions to protect existing mains and services and maintain uninterrupted supply. Any damage incurred shall be repaired immediately.
2. All pipe elevations shown are invert elevations.
3. The Contractor shall locate existing utilities a minimum of two weeks in advance of construction operations in vicinity of utilities.
4. For all standard details see standards bound in Specifications.
5. All water mains to be C.I.P. or D.I.P. and have a minimum of 3/4" cover.
6. Block all fittings with concrete, see standard details bound in Specifications.
7. Bury Line elevations on fire hydrants shall be set to elevations shown on drawings.
8. All Fire Hydrants shall be strapped to Tee and buttressed with concrete in accordance with Standard Details.
9. Clear all utilities by a minimum of 6', clear all poles by 2'-0" minimum or tunnel as required.
10. The Contractor shall provide a joint in all sewer mains within 2'-0" of exterior manhole walls.
11. All horizontal and vertical controls are based on Maryland State Datum.
12. All sewer mains shall be V.C.P., C.C.P., or A.C.P. class 2400 unless otherwise noted.

| MATERIALS TO BE FURNISHED BY THE COMMISSION | |
|---|---|
| 8" V | 2 |
| 6" V | 3 |
| 3" V | 3 |
| F.H. | 6 |

| QUANTITIES | |
|------------|--------|
| 8" Sewer | 5780' |
| 6" Water | 1,350' |
| 6" Water | 1,030' |
| 3" Water | 860' |

| | |
|----------|--|
| 8-01-24 | AS-BUILT ADO: 5961 Stevane Forest Rd. |
| 3-1-63 | Revised B'S and Deleted W'S 3688 on Rough Crossing |
| 3-7-63 | Revised Sewer House Connection Lot 25 and 26 |
| 1/8 Date | Revision |

Kenneth J. McLeod

Contract No. C-288 W&S
Stevane Forest
Section 5 Area 1

WHITMAN, REQUARDT & ASSOCIATES
ENGINEERS
1304 ST. PAUL ST.
BALTIMORE, MARYLAND

HOWARD COUNTY METROPOLITAN COMMISSION

CONTRACT NO. C-288 W&S

PLAN OF
WATER & SEWER MAINS

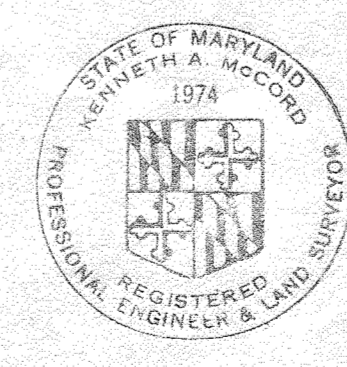
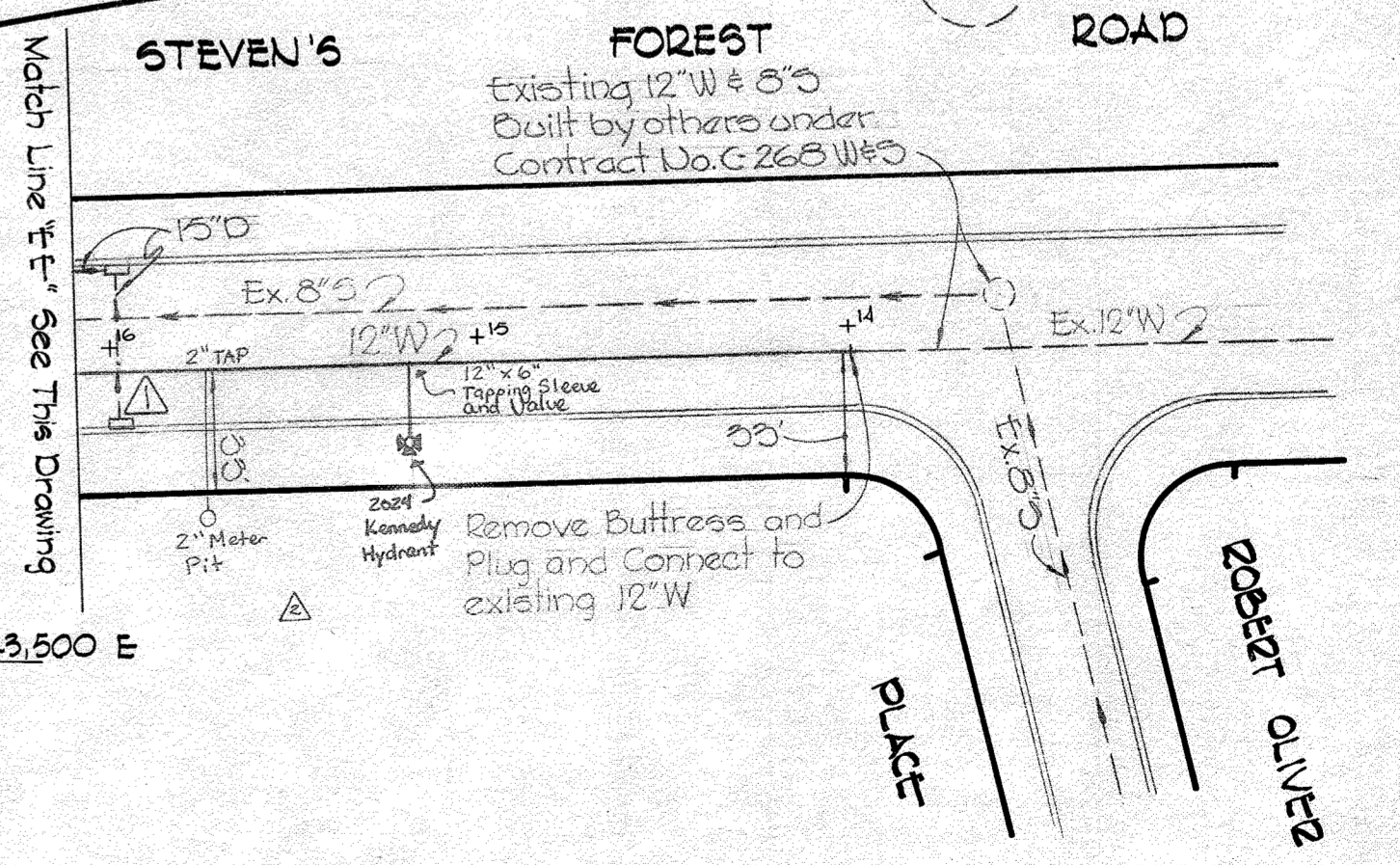
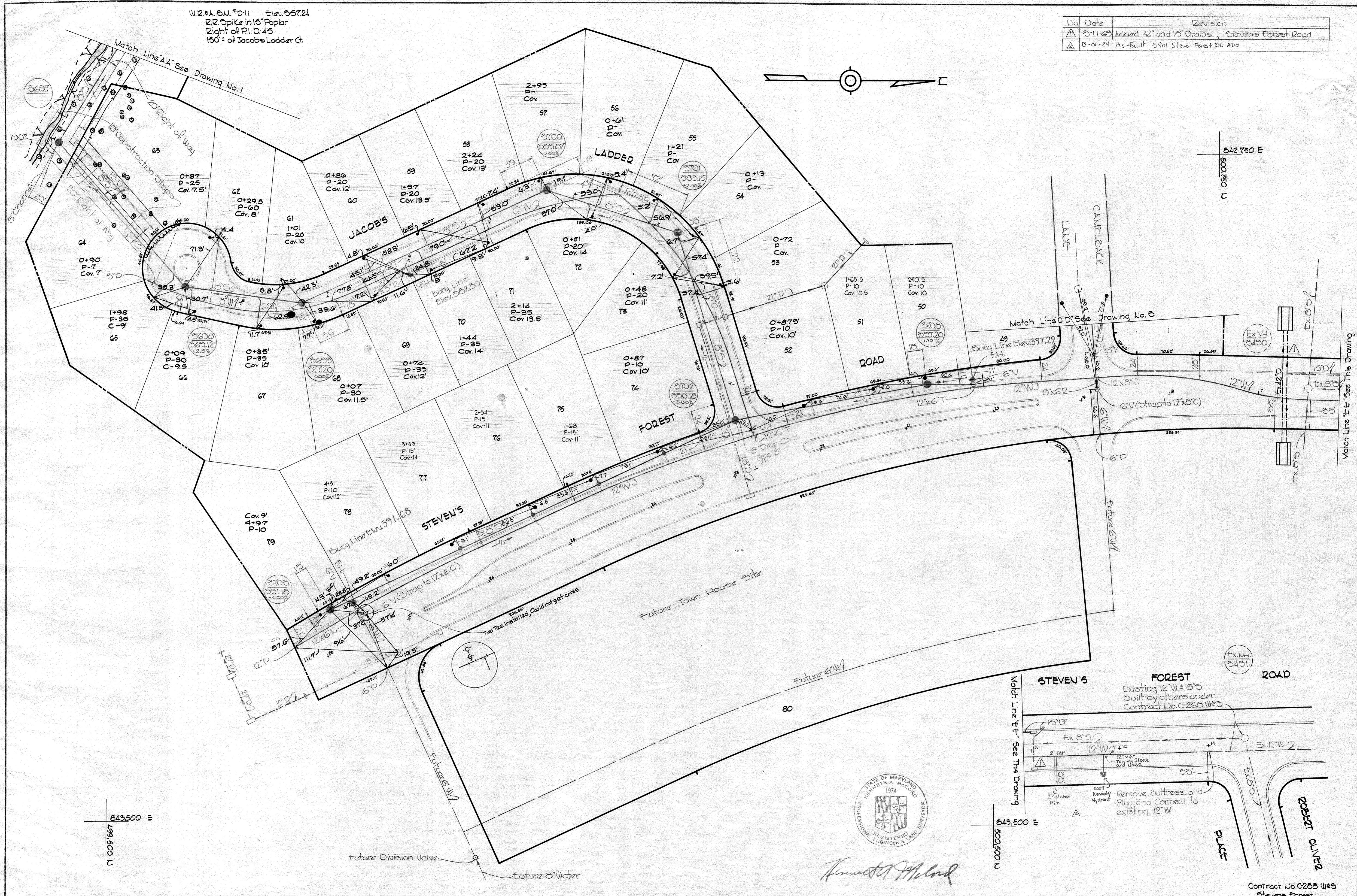
COLUMBIA
VILLAGE OF OAKLAND MILLS
ELECTION DISTRICT GUILFORD NO. 6

DRAWING NO. 1 OF 5
SCALE 1" = 50'

1/S-M 882 SM

2/SM 288 W-5/2

| No | Date | Revision |
|----|---------|---|
| 1 | 5-11-69 | Added 42" and 18" Drains, Stevens Forest Road |
| 2 | 8-01-24 | As-Built 5901 Steven Forest Rd. ADO |



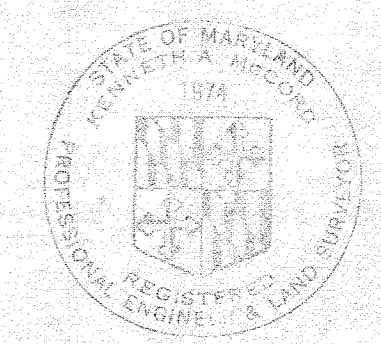
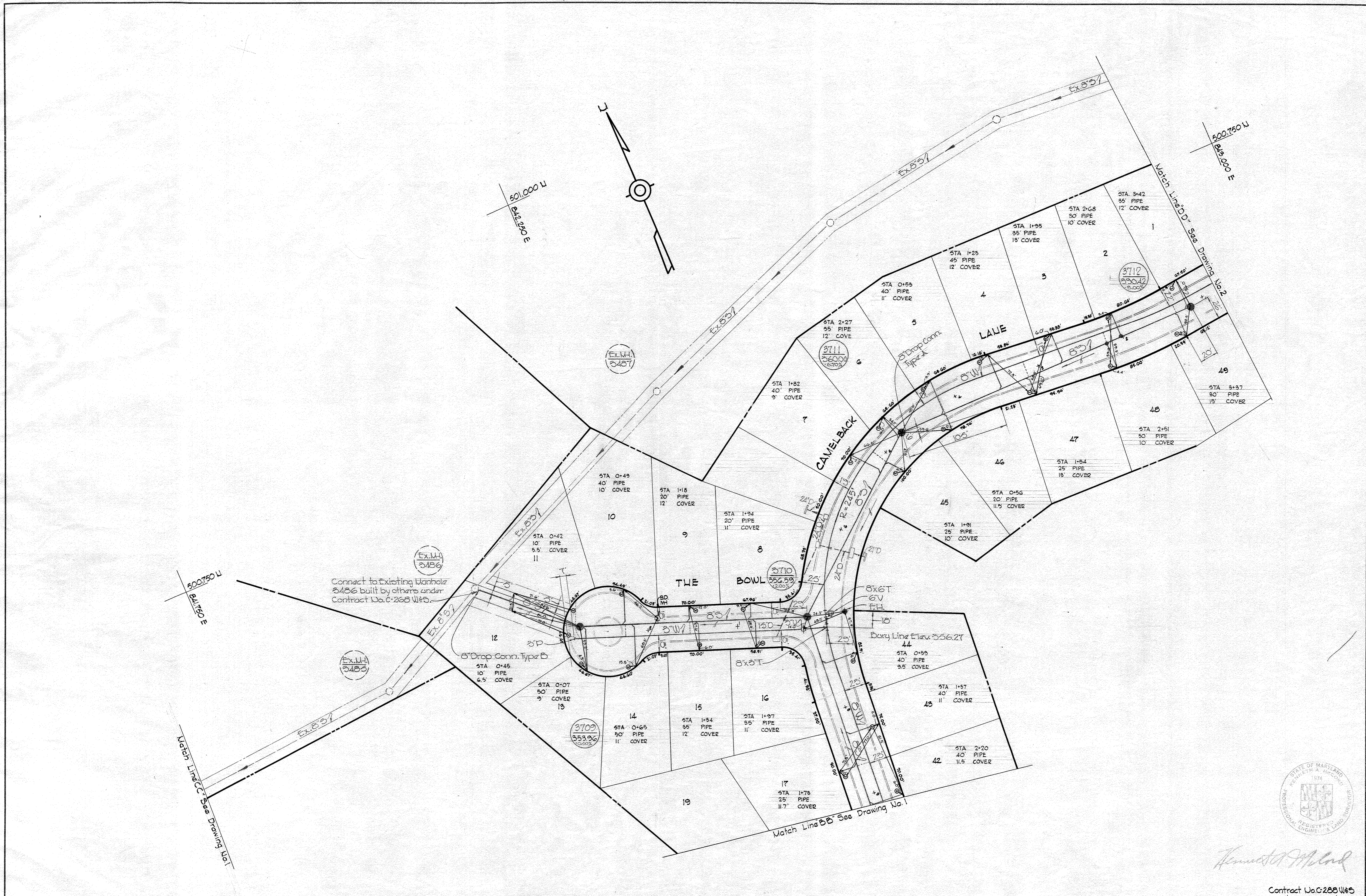
Kenneth M. Mad

| | | | | | | |
|---|---|--------------------------|--------------------------------|--|---------------|-------------------------------|
| WHITMAN, REQUARDT & ASSOCIATES ENGINEERS 1304 ST. PAUL ST. BALTIMORE, MARYLAND | HOWARD COUNTY METROPOLITAN COMMISSION DATE: 2-17-69 CHIEF ENGINEER: [Signature] | CONTRACT NO. C-288 W B S | PLAN OF WATER & SEWER MAINS | COLUMBIA VILLAGE OF OAKLAND MILLS ELECTION DISTRICT GUILFORD NO. 6 | DRAWING NO. 2 | SCALE 1" = 50' |
| | | | | | OF 5 | 499-482 500-482 501-482 |

W. O. 6023

AS BUILT, SEPTEMBER 3, 1969 T.D. 4254

WS 288 W-5/3



Kenneth M. Lind

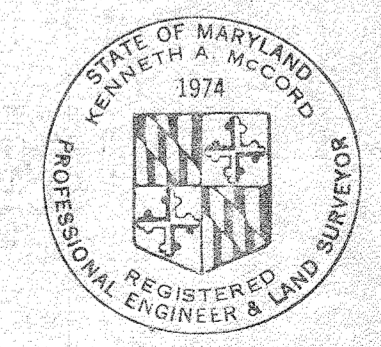
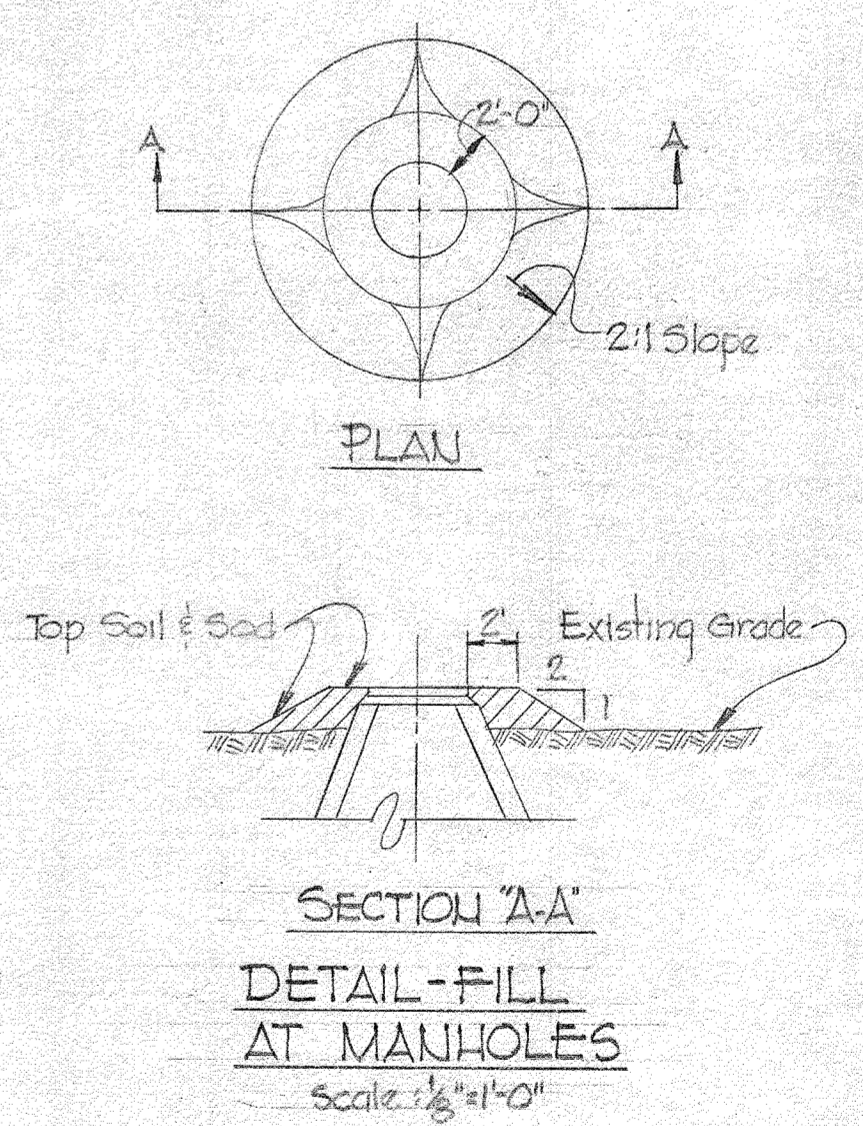
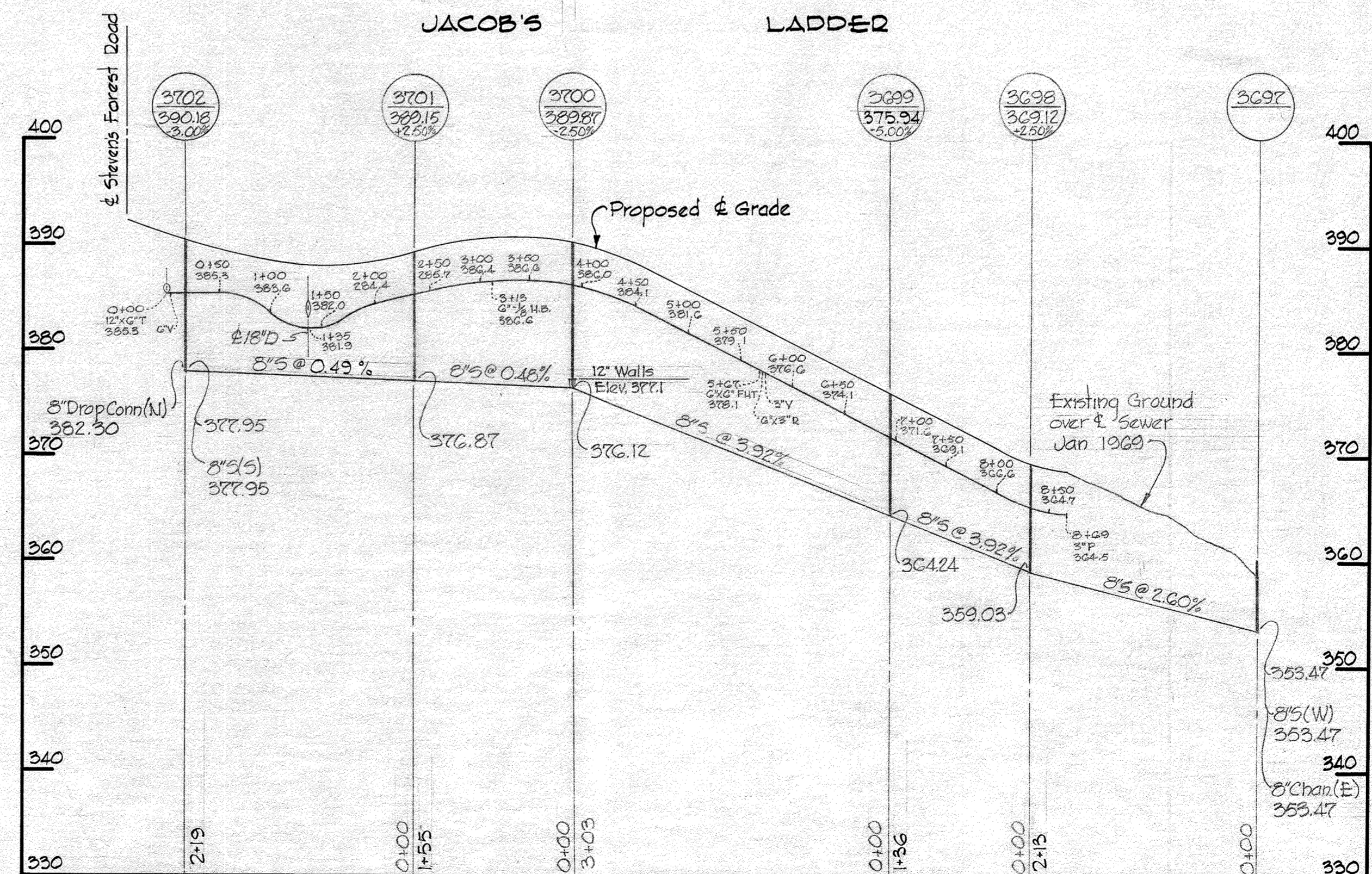
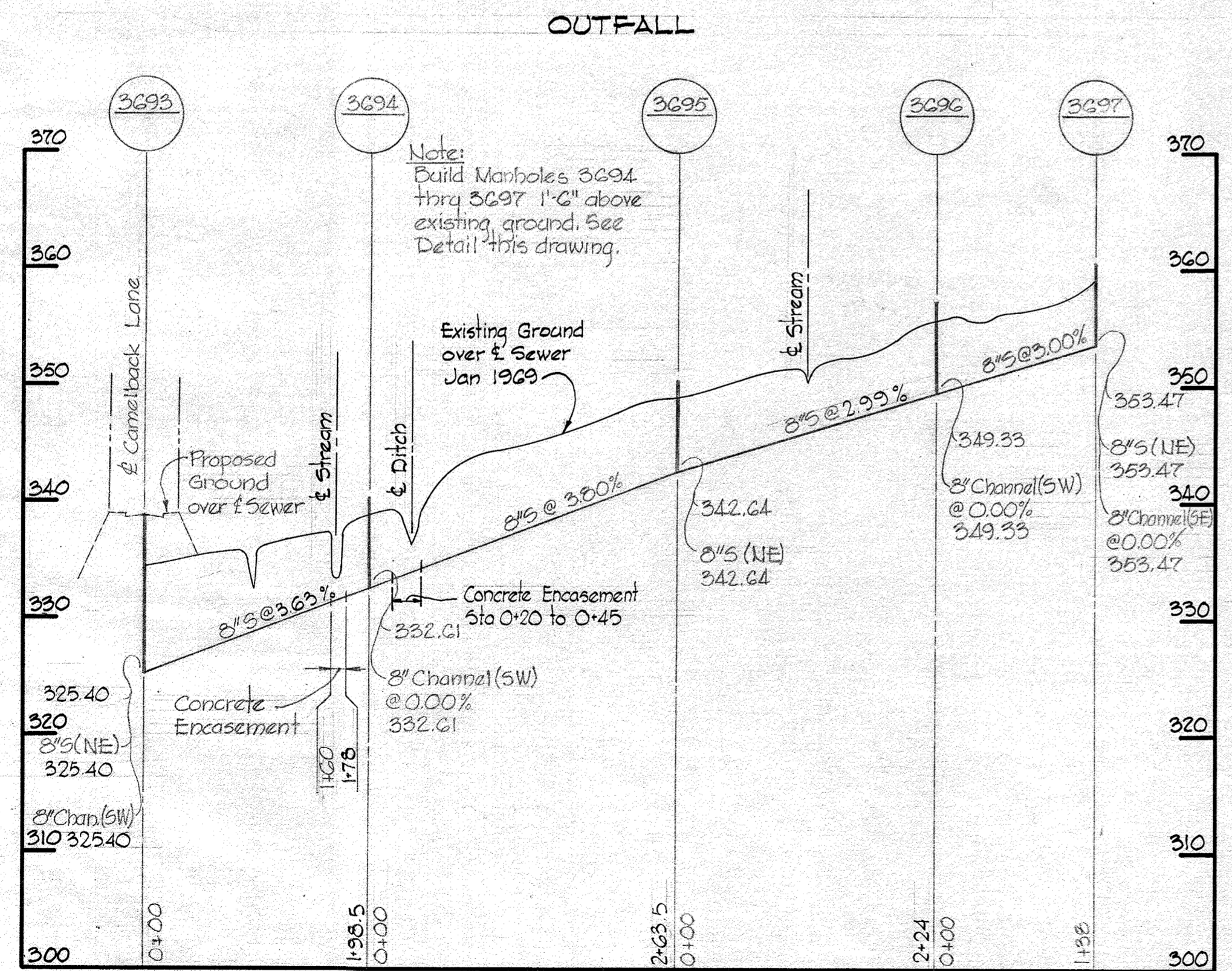
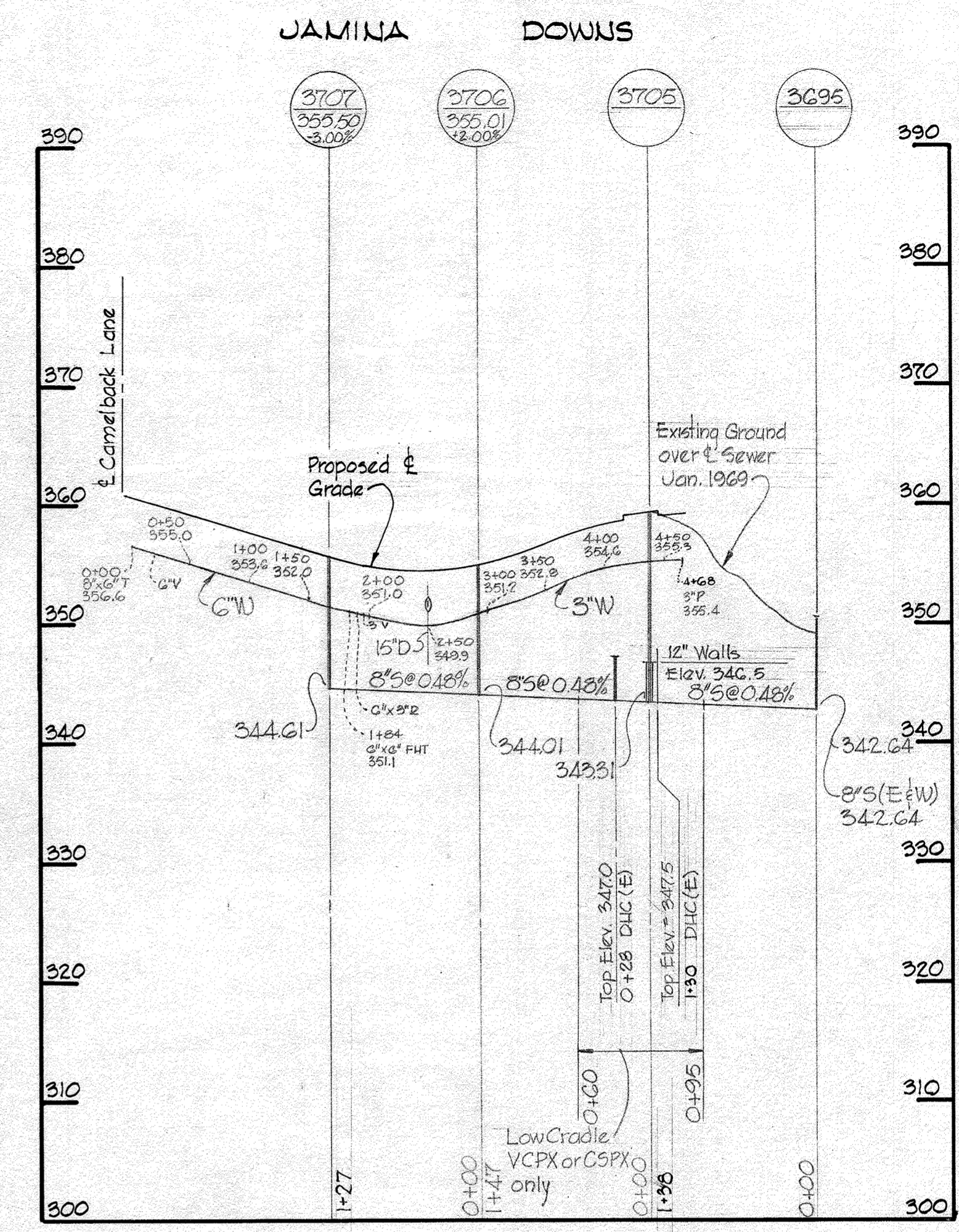
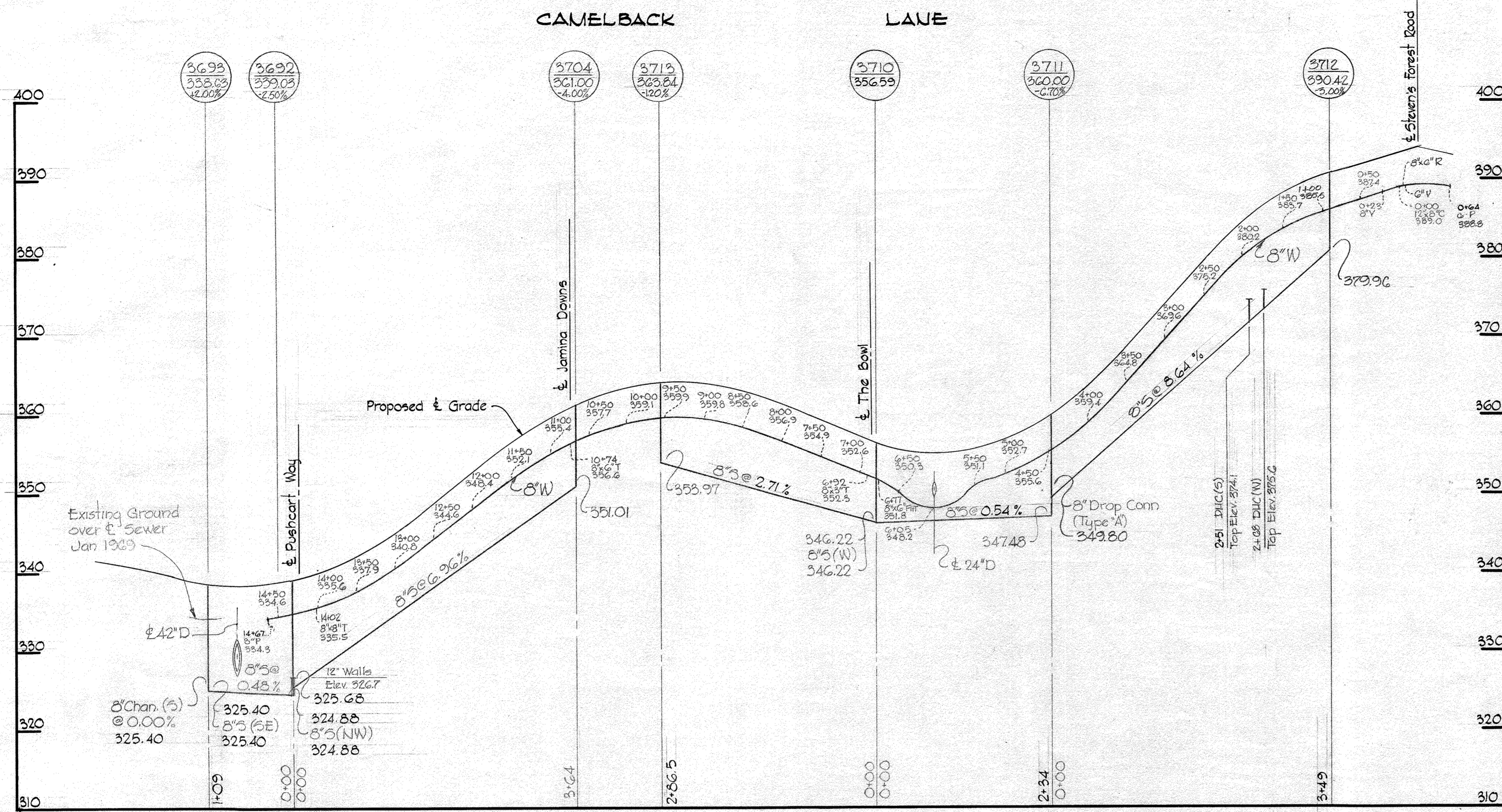
Contract No. C-288 W-5
Stevens Forest

| | | | | | | |
|---|---|------------------------|--------------------------------|--|---------------|--------------------|
| WHITMAN, REQUARDT & ASSOCIATES ENGINEERS 1304 ST. PAUL ST. BALTIMORE, MARYLAND | HOWARD COUNTY METROPOLITAN COMMISSION DATE: 2-17-69 CHIEF ENGINEER: [Signature] | CONTRACT NO. C-288 W-5 | PLAN OF WATER & SEWER MAINS | COLUMBIA VILLAGE OF OAKLAND MILLS ELECTION DISTRICT GUILFORD NO. 6 | DRAWING NO. 3 | SCALE 1" = 50' |
| | | | | | OF 5 | 500-481 500-482 |

W. O. 6023

AS BUILT SEPTEMBER 9, 1969 T.B. 4254

WS 288 W/S/4



Kenneth A. Milrod

Contract No. C-288 W/S
Steven's Forest

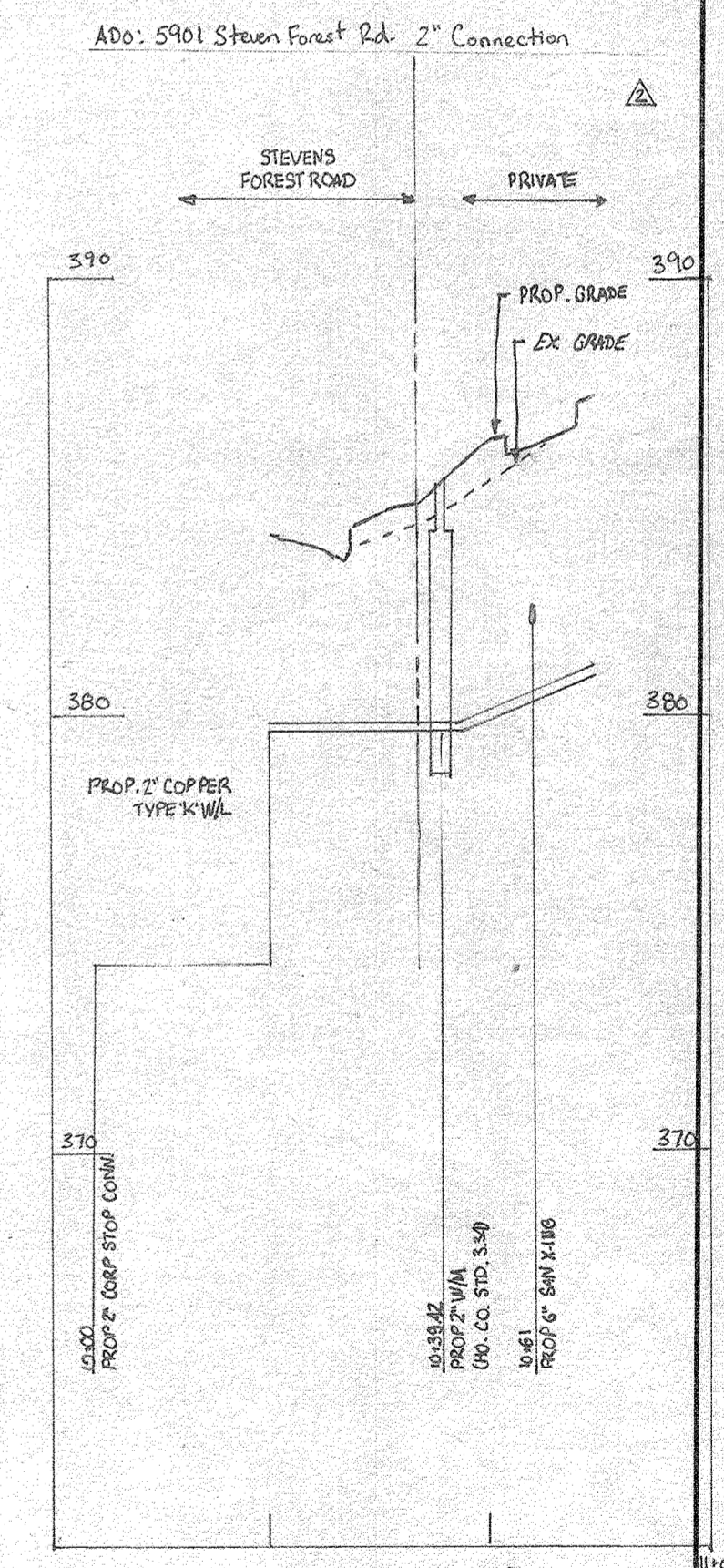
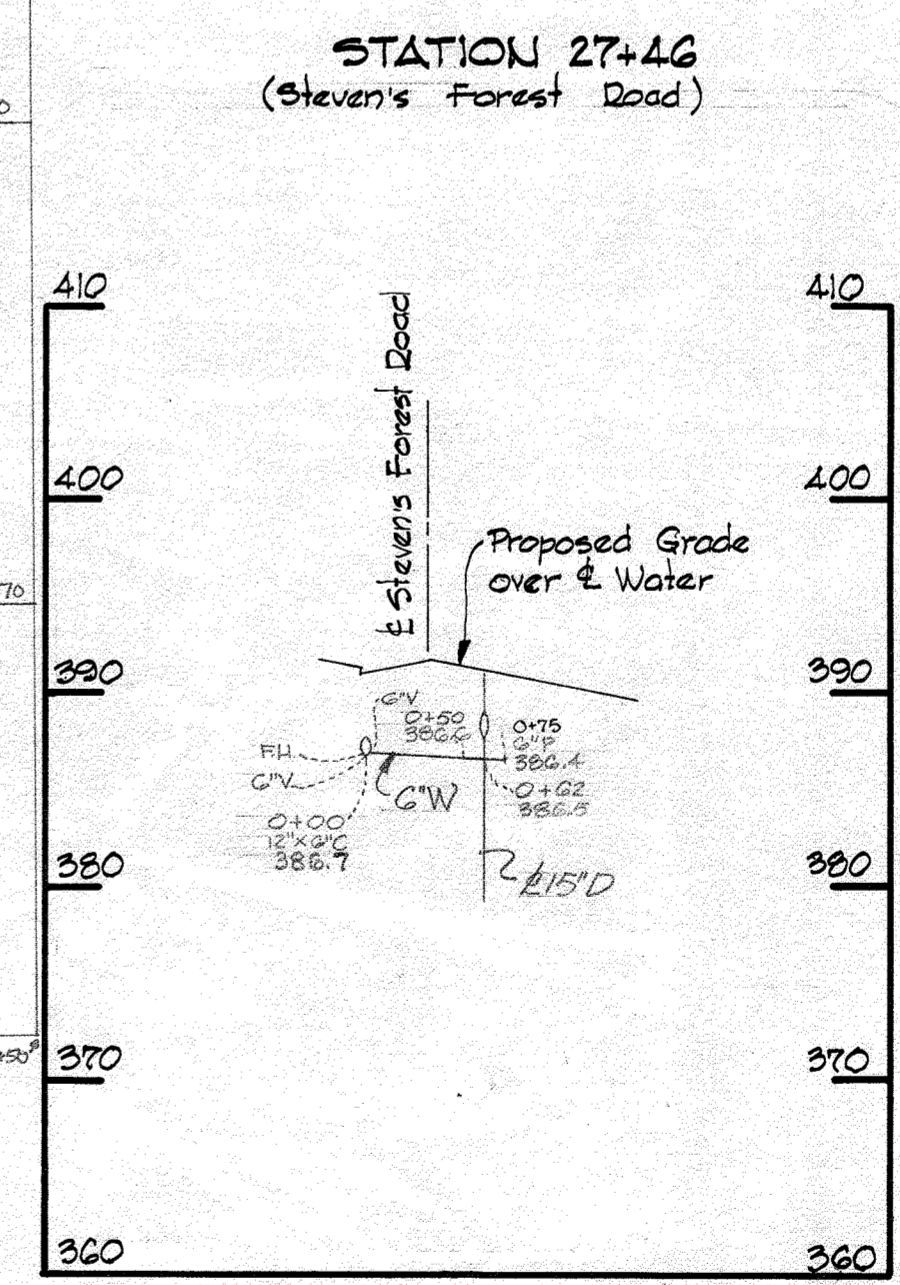
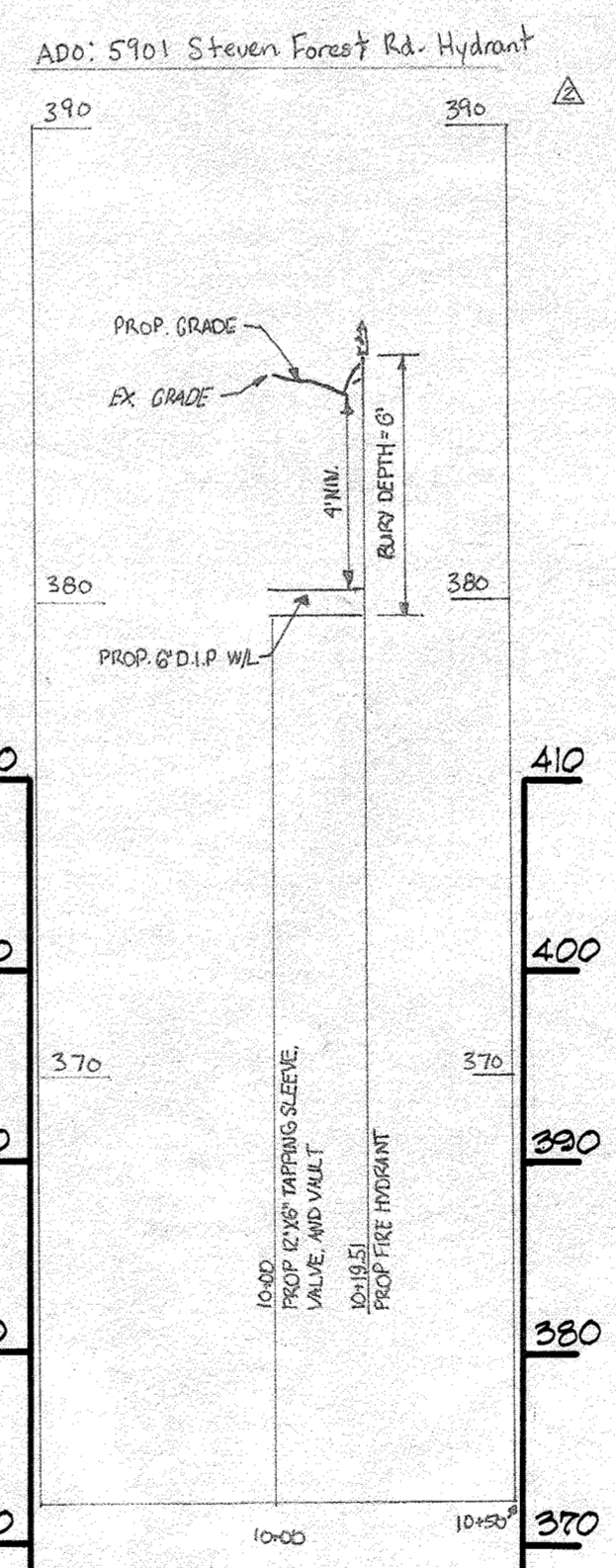
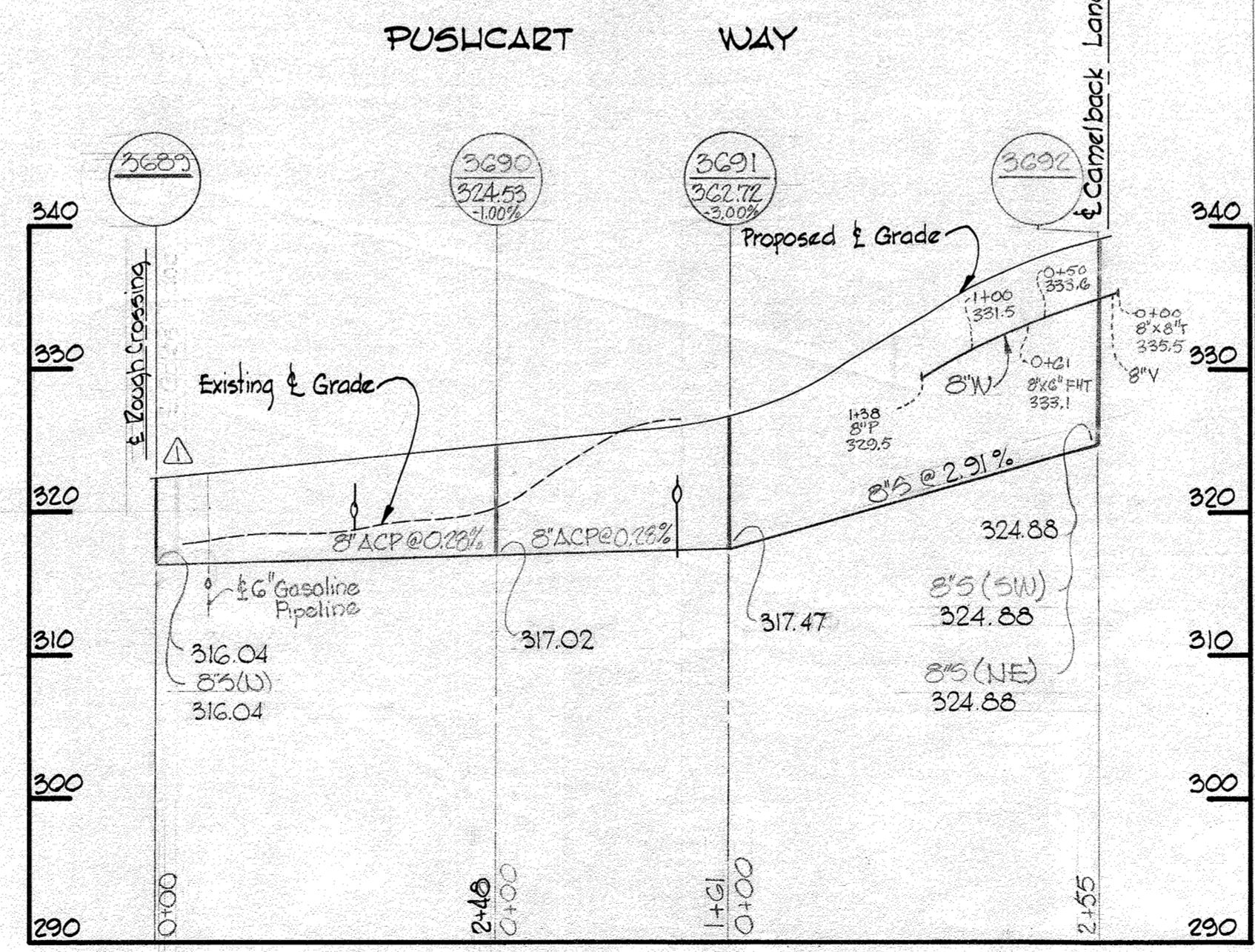
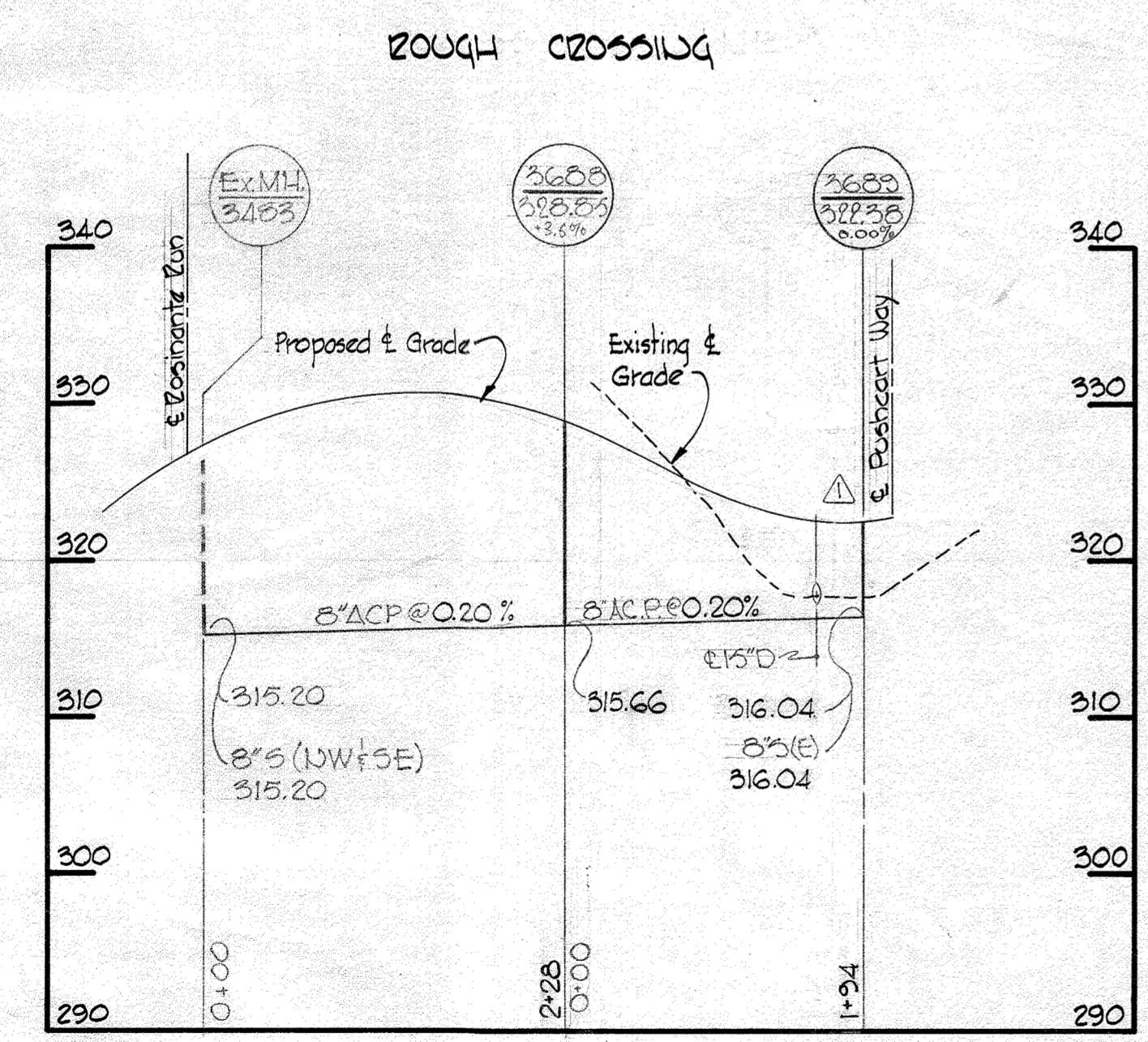
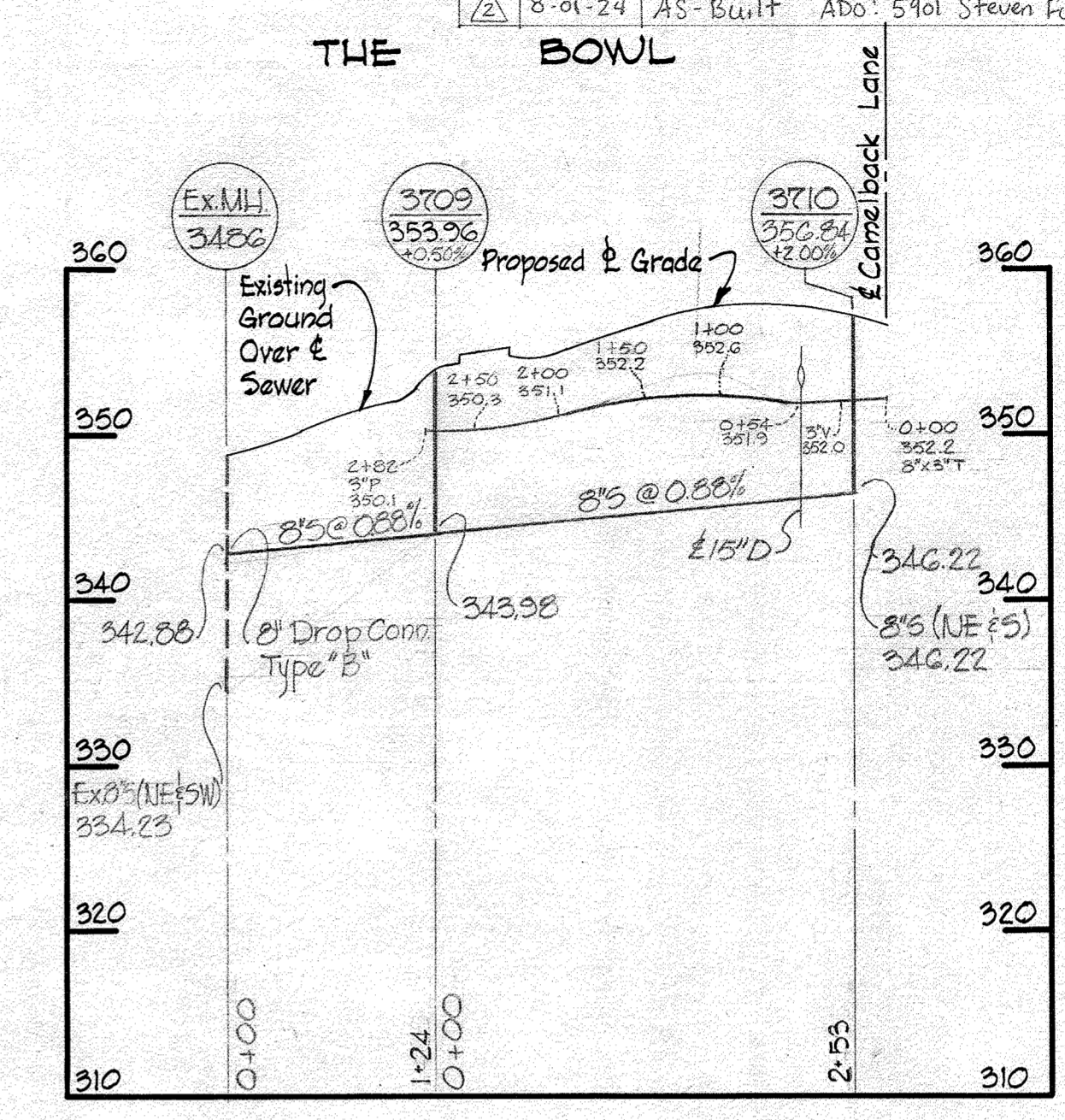
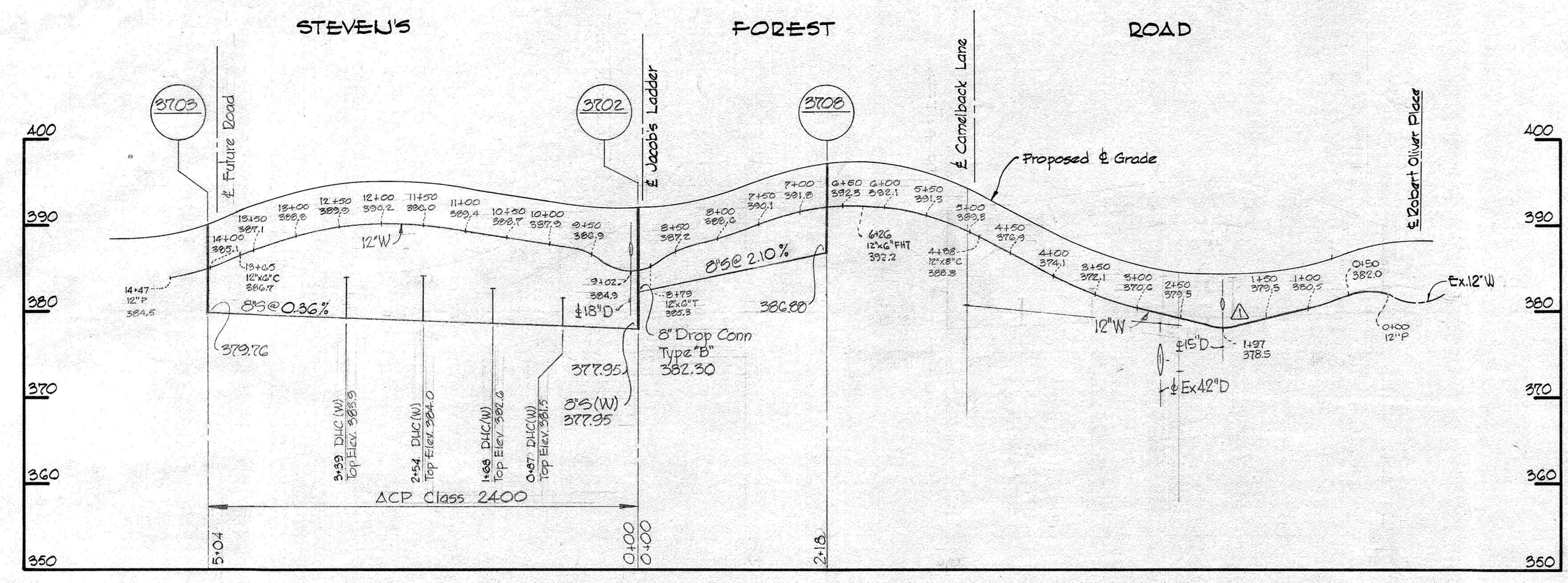
| | | | | | |
|---|--|------------------------|------------------------------------|--|--|
| WHITMAN, REQUARDT & ASSOCIATES ENGINEERS 1304 ST. PAUL ST. BALTIMORE, MARYLAND | HOWARD COUNTY METROPOLITAN COMMISSION DATE _____ CHIEF ENGINEER _____ | CONTRACT NO. C-288 W/S | PROFILES OF WATER & SEWER MAINS | COLUMBIA VILLAGE OF OAKLAND MILLS ELECTION DISTRICT GUILFORD NO. 6 | DRAWING NO. 4 OF 5 SCALE H:1"=100' V:1"=10' |
|---|--|------------------------|------------------------------------|--|--|

W. O. 6028-2

AS BUILT SEPTEMBER 9, 1969

WS 288 W-5/5

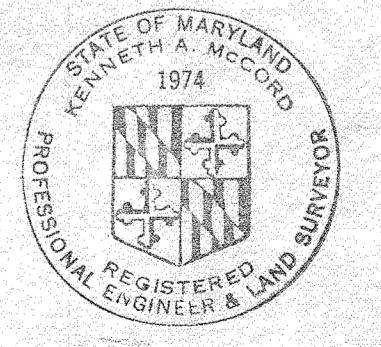
| No. | Date | Revision |
|-----|---------|--------------------------------------|
| 1 | 5-11-69 | Lowered 12" Water Main at 15" Drain |
| 2 | 8-01-24 | AS-Built ADO: 5901 Steven Forest Rd. |



ALL SEWER PIPE IS A.C.P. CLASS 2400

| No. | Date | Revision |
|-----|---------|---|
| 1 | 5-11-69 | Deleted W1366B and Revised Sewer Lengths. |

| | | | | | | |
|--|---|----------------------------------|--|--|--------------------------------------|---------------------------------|
| WHITMAN, REQUARDT & ASSOCIATES ENGINEERS 1304 ST. PAUL ST. BALTIMORE, MARYLAND | HOWARD COUNTY METROPOLITAN COMMISSION DATE: 5-17-69 CHIEF ENGINEER | CONTRACT NO. C-288W&S | PROFILES OF WATER & SEWER MAINS | COLUMBIA VILLAGE OF OAKLAND MILLS ELECTION DISTRICT GUILFORD NO.6 | DRAWING NO. 5 OF 5 | SCALE H:1"=100' V:1"=10' |
| | | | | | Contract W# C-288 W&S Stevens Forest | |



Kenneth A. McCord

AS BUILT SEPTEMBER 9, 1969